



Washington Early Childhood Center Facilities Project

Board of Education, May 27, 2026

OUSD Facilities Planning & Management, Early Childhood, and Enrollment Offices



**OAKLAND UNIFIED
SCHOOL DISTRICT**
Community Schools, Thriving Students

Agenda

Overview & Context

- Why Early Childhood
- Where Is the Need?
- Equity & Demographics
- Why Washington?

Proposed Project

- Existing Conditions
- Project Scope
- Funding & Schedule

Long-Term Impact

Next Steps





OUSD Vision and Mission



VISION

All OUSD students will find joy in their academic experience while graduating with the skills to ensure they are caring, competent, fully-informed, critical thinkers who are prepared for college, career, and community success.



MISSION

Oakland Unified School District (OUSD) will build a Full Service Community District focused on high academic achievement while serving the whole child, eliminating inequity, and providing each child with excellent teachers, every day.



OUSD Facilities Mission Statement



MISSION

We support whole student growth and success by planning, constructing, and maintaining facilities that are flexible, resilient, healthy, safe, and joyful.

These spaces maximize inclusion, collaboration, empower innovation, and inspire creativity, preparing our students to be college-, career-, and community-ready.



Ask of the Committee

Adoption by the Board of Education, upon recommendation of the Facilities Committee, of the resolution approving:

- The Washington Early Childhood Center project
- Acceptance of approximately **\$19 Million in Oakland Children's Initiative funding**
- Authorization to proceed with planning, design, and construction





Overview & Context



Early Childhood Education Overview



Early Childhood = High-Impact Investment

- Kindergarten readiness
- Literacy & numeracy outcomes
- Social-emotional development
- Long-term academic persistence
- Provides critical childcare stability and workforce support for families



Supports Families

Early learning programs provide:

- Childcare stability
- Workforce participation support
- Early connection to neighborhood schools

OUSD's TK expansion efforts have helped slow districtwide enrollment decline and strengthen early-grade enrollment capture



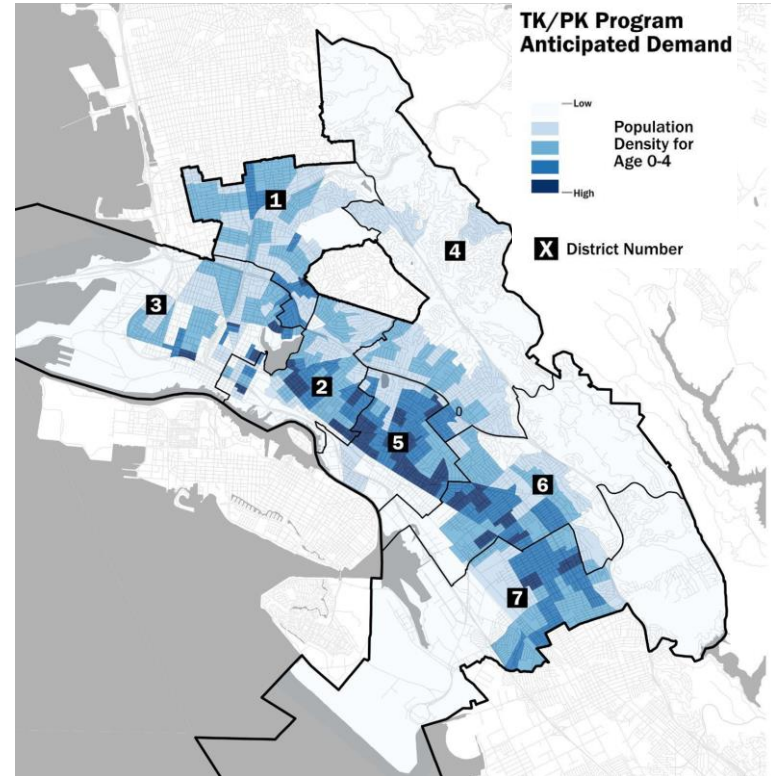
Planning Alignment & Long-Term Planning Strategies

Facilities Context:

- Existing campuses were not designed for universal TK
- Retrofitting spaces is insufficient and inequitable
- Requires:
 - Purpose-built classrooms
 - Outdoor learning space
 - Age-appropriate infrastructure

Strategic Alignment: Supports

- Full Service Community Schools model
- Enrollment stabilization strategy
- Long-term facility optimization





Where is the Need?

2026 Facilities Master Plan Findings

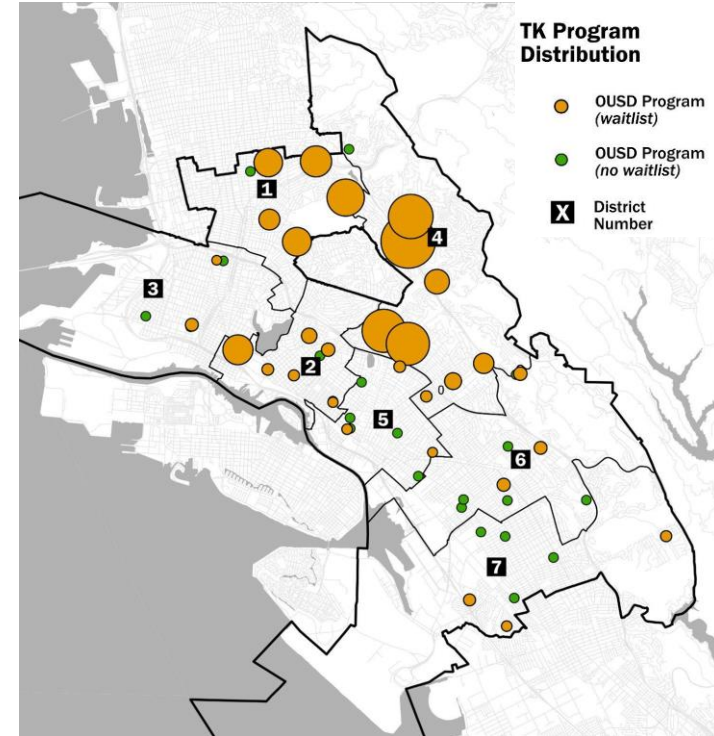
- Districts 1 and 4 as having the greatest unmet PK/TK need
- Persistent waitlists
- Limited facility availability
- Structural mismatch between where families live and where seats exist

Current Access in District 1 Preschool (PK)

Only enough seats for approximately: **20%** of future Kindergarten students

Transitional Kindergarten (TK)

Only enough seats for approximately: **45%** of future OUSD Kindergarten students





Proposed Project



Washington CDC - Current Condition



The mural has been graffitied over. The siding on the portable is deteriorating. Grass and weeds are breaking through the asphalt throughout the schoolyard.

Washington CDC - Current Condition





Who Are We Serving?

Washington/Sankofa Service Area Primary ZIP Codes: 94608, 94609

Economic Need & Equity Context

- **15.6%** of households in ZIP code 94608 and **10%** in ZIP code 94609 live below the federal poverty line, meeting or exceeding commonly used thresholds for targeted early childhood investment
- First 5 previously identified a 5% poverty rate as a meaningful benchmark for underserved communities
 - 94608 exceeds that benchmark by more than 3x and 94609 exceeds it by 2x

Among OUSD students living in these ZIP codes:

- 67% qualify for free/reduced-price meals (94608)
- 57% qualify for free/reduced-price meals (94609)

Location	Zipcode	Total Households	Poverty	Number of families
Washington ECE	94608	16,211	15.6%	2,529
Washington ECE	94609	10,998	10.0%	1,099
Oakland	All Zipcodes	167,909	13.7%	92,285



Project Scope

New Construction (Replacing Existing Facility)

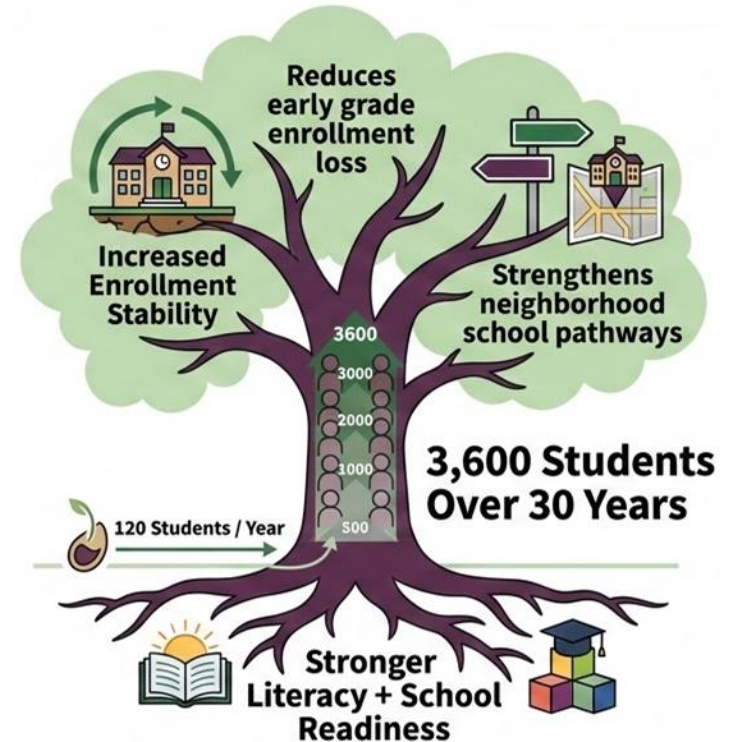
- 3 Preschool (PK) Classrooms
- 3 Transitional Kindergarten (TK) Classrooms
- 2 Dedicated Outdoor Learning Playgrounds

Purpose-Built Design

- Purpose-built classrooms
- Early literacy & play-based learning
- Safe, age-appropriate environments
- Indoor–outdoor integration

Facility Outcome

- Moves away from **portables + converted classrooms**
- Provides **permanent, high-quality early learning space**





Funding Overview

Primary Source:

Oakland Children’s Initiative (OCI): **\$19 Million**

No Impact to Measure Y

Funding Supports:

- Planning & design
- Demolition of existing facility
- New construction
- Outdoor learning/play spaces
- Site infrastructure improvements

Project Schedule

Pre-Planning

SY 2025-26

Planning & Design

SY 2026-27

Construction

SY 2026–27

Project Opening

Target: SY 2027–28



Long-Term Impact of the Washington Project

Educational Continuity

- Establishes a seamless PK → TK → Kindergarten pathway
- Strengthens feeder patterns into:
 - Sankofa, Peralta, and other District 1 & 4 schools

Districtwide Impact

School readiness

- Literacy outcomes
- Enrollment stabilization
- Long-term family retention

The Washington Early Childhood Center is an investment in Oakland's children, families, schools, and long-term community stability





THANK YOU

Preston Thomas, OUSD Chief Executive Officer
Jessica Cannon, Executive Director, Early Childhood
Kilian Betlach, Executive Director, Enrollment
Pranita Ranbhise, Executive Director, Facilities Planning & Management
Michael Ezeh, Director, Accounting Director



**OAKLAND UNIFIED
SCHOOL DISTRICT**

Community Schools, Thriving Students



Context