

# Superintendent Report

**Superintendent, Dr. Kyla Johnson-Trammell**  
**September 11, 2024**



**OAKLAND UNIFIED  
SCHOOL DISTRICT**

*Community Schools, Thriving Students*

## Our Vision

All OUSD students will find joy in their academic experience while graduating with the skills to ensure they are caring, competent, fully-informed, critical thinkers who are prepared for college, career, and community success.

## Our Mission

Oakland Unified School District (OUSD) will build a Full Service Community District focused on high academic achievement while serving the whole child, eliminating inequity, and providing each child with excellent teachers, every day.



# Superintendent Report Overview



- **Water Quality Highlights**
- **Enrollment Updates**
- **School Highlights**



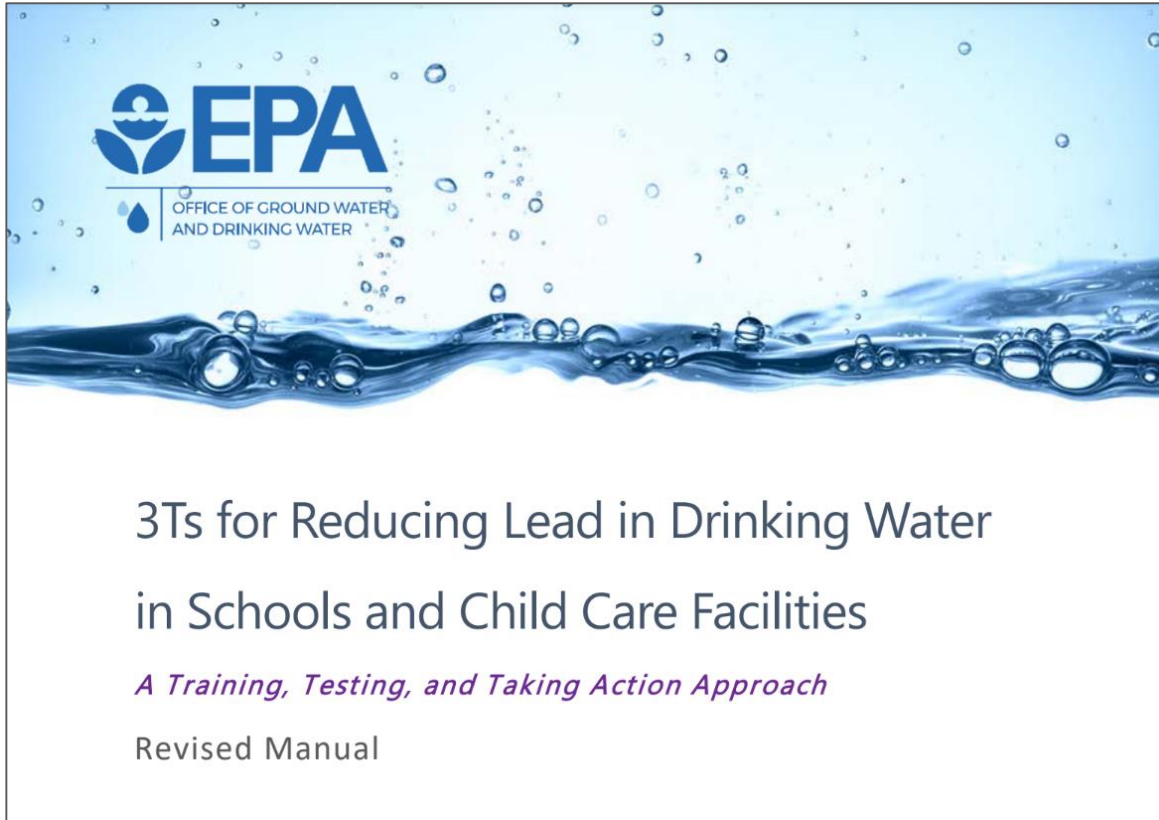
# Water Quality Highlights



# Progress Since Last Board Meeting

- ★ Final push through Labor Day Weekend. **180 repairs completed for 32 schools** and first step to bringing water sources back online once they test below 5 ppbs
- ★ Retesting is under way for the 32 Group 1 schools that have completed repairs
  - 8 Sites Completed
  - Week 9/4-9/6 - 11 scheduled (12 campuses)
- ★ All Group 2 schools have been tested and B & G currently working on repairs.
- ★ Testing window limited in mornings at school sites after water has sat overnight to get accurate readings.

# Water Testing Protocols by EPA



**Testing must be conducted early in the morning before school starts to ensure that we retrieve quality samples for testing.**

# Increased Flowater Systems

**60 Flowater Systems arrived in OUSD at the week of the last Board meeting and we have begun installing them at the schools with the highest needs.**

- ❖ 12 sites have already had additional systems installed in schools with identified need.
- ❖ Over 4,700 refillable water bottles will be provided to schools that identify need
- ❖ 7,200 reserve water bottles on order if schools have a water bottle filling station issues that require maintenance.

## Order of Installation:

1. Prioritizing schools that have only 1 Flowater system with no backup water bottle filling systems
2. Prioritizing Schools with a high % of water sources with results over 5 ppb
3. Prioritizing schools with higher relative enrollment to Flowater systems with a ratio that is higher than 200 students per Flowater system.
4. Applying an equity framework using LCFF to prioritize schools with similar in above categories  
prioritizing high LCFF schools



# Tracking Progress on Water Quality

Working Draft of OUSD Water Quality Assessment and Remediation Plan 2024

| School Groups  | Group 1-Schools  | Group 2 Schools   | Group 3 Schools   | Group 4 Schools   | Group 5-Schools  |
|----------------|--|---|---|---|--|
| Description    | Completed Testing (Active Remediation)   | Expedited Testing (Pre-1986 Construction)   | Mixed Facilities Age (New Buildings on Campus)  | New Construction-Post 2010  | Early Childhood Centers  |
| Testing Window | March 2024-July 2024   | Round 1: August 17-August 24<br>Round 2: September 2024   | Early October 2024 for Mixed Building Campuses  | Early October 2024 for Mixed Building Campuses  | As Needed for Licensing  |
| Retesting      | August-September   | September for Round 1   | TBD   | TBD   | As Needed  |
| Actions        | <p>OUSD tests 40 schools in the spring and summer months. When school sites were identified, they followed the following protocol. We are repairing the remaining faucets and drinking fountains, which were removed from operation by covering them with a bag. If they are no longer bagged contact custodial to recover.</p> <ul style="list-style-type: none"> <li>83% (897 fixtures) 5 ppb or lower (under the District's limit)</li> <li>10.7% (116 fixtures) tested above 5 ppb and below the state and federal limit of 15 ppb</li> <li>6.5% (70 fixtures) tested higher than the State and Federal Limit of 15 ppb</li> </ul> | <p>OUSD schools that are over 50 years old and have not been tested. Due to the age of the schools and pipes, OUSD commenced testing on all drinking fountains at this site on the weekend of 8/17-8/18.</p> <p>Expedited testing of water in common areas including hallways and playgrounds.</p> <p>Teachers should <b>NOT</b> allow students to fill water bottles or cups in the classroom until full comprehensive testing is completed in Phase 2</p> | <p>The 1986 amended <a href="#">Federal Safe Drinking Water Act</a> banned lead pipes, flux, and solder in construction. Because these campuses have newer construction, there is significantly less risk of elevated lead levels in these areas.</p> <p>Testing will begin completion of:</p> <ul style="list-style-type: none"> <li>Group 1</li> <li>Group 2</li> </ul> | <p>School Buildings completed after 2010 are not required to be tested. As we complete new construction planned for Measure Y or past projects completed below after the 2010 date, these buildings will not need to be tested moving forward. Out of an abundance of caution, we will test these schools in 2024 after all Group 1, 2, 3, and 5 schools have been completed.</p> <p>These schools will be the last to be tested and may not require future testing based on regulations.</p> | <p>Because lead exposure occurs in the very early years and has the most significant impact on children at this age, the state licensing process requires OUSD's Early Childhood Centers to submit water testing every 5 years. All OUSD preschools and early childhood centers are licensed and on the state testing cycles aligned with licensing.</p> <p>Water quality data for ECE <a href="#">tested last</a> year or as part of the licensing process.</p> |



|   |  |  |  |   |  |
|---|--|--|--|---|--|
| <p><b>Schools</b></p> <p><i><b>"Bold means that the schools have had repairs completed and are ready for retesting"</b></i></p> <p>Updated 9/3/2024</p> | <p><b>All Tested Water Sources Below 5ppb</b></p> <ol style="list-style-type: none"> <li>1. Chabot (No Repairs Needed)</li> <li>2. Claremont MS (No Repairs Needed)</li> <li>3. Greenleaf (No Repairs Needed)</li> <li>4. Roosevelt MS (No Repairs Needed)</li> <li>5. Sankofa (No Repairs Needed)</li> </ol> <p>Fixtures required repairs based on test results for some water sources:</p> <ol style="list-style-type: none"> <li>1. Bella Vista Elementary</li> <li>2. Bret Harte MS</li> <li>3. Calvin Simmons-United for Success</li> <li>4. Cleveland</li> <li>5. Crocker Highlands</li> <li>6. Dewey</li> <li>7. Edna Brewer</li> <li>8. Elmhurst United</li> <li>9. Emerson</li> <li>10. Frick United Academy</li> <li>11. Fruitvale Elementary</li> <li>12. Garfield</li> <li>13. Global Family</li> <li>14. Highland Community School</li> <li>15. Hillcrest</li> <li>16. Hoover</li> <li>17. Horace Mann</li> <li>18. Laurel Elementary</li> <li>19. Lincoln</li> </ol> | <p><b>Elementary Schools</b></p> <ol style="list-style-type: none"> <li>1. Bridges @ Melrose</li> <li>2. East Oakland PRIDE</li> <li>3. Brookfield</li> <li>4. Grass Valley</li> <li>5. Burckhalter</li> <li>6. Carl Munck</li> <li>7. Redwood Heights</li> <li>8. Joaquin Miller</li> <li>9. Melrose Leadership-Sherman</li> <li>10. Melrose Leadership-Maxwell</li> <li>11. Manzanita Campus</li> <li>12. Prescott</li> <li>13. Stonehurst Campus</li> <li>14. Franklin</li> <li>15. Piedmont Ave.</li> </ol> <p><b>High Schools and Young Adult</b></p> <ol style="list-style-type: none"> <li>1. Castlemont</li> <li>2. King Estates Campus</li> <li>3. Skyline</li> <li>4. Santa Fe Campus</li> </ol> <p><i>*Tested Drinking Fountains, Water Bottle Fillers and Prep Sink over after pulled out of service 8/17-8/28</i></p> | <p><b>Full Campus:</b></p> <ol style="list-style-type: none"> <li>1. International Community School</li> <li>2. Think College Now</li> <li>3. La Escuelita</li> <li>4. MetWest</li> <li>5. Acorn Woodland</li> <li>6. Encompass</li> </ol> <p><b>Mixed Campus</b></p> <ol style="list-style-type: none"> <li>1. Markham (New Building)</li> <li>2. Montclair (New Building)</li> <li>3. Reach (New Building)</li> </ol> <p><i>Other schools in Group 1 and Group 2 will be added to this list after they have been retested.</i></p> | <p><b>Full Campus:</b></p> <ol style="list-style-type: none"> <li>1. Glenview (All Campus)</li> </ol> <p><b>Mixed Campus:</b></p> <ol style="list-style-type: none"> <li>1. LIFE Academy (New Building)</li> <li>2. Claremont (New Building)</li> <li>3. Coliseum College Prep (New Building)</li> <li>4. Fremont (New Buildings)</li> <li>5. Laurel Early Childhood Center (New Building)</li> <li>6. Madison Upper (High School Wing)</li> </ol> <p><i>Other schools in Group 1 and Group 2 will be added to this list after they have been retested.</i></p> | <ol style="list-style-type: none"> <li>1. Jefferson ECE</li> <li>2. Allendale ECE</li> <li>3. Arroyo Viejo ECE</li> <li>4. Bella Vista ECE</li> <li>5. Burbank ECE</li> <li>6. Emerson ECE</li> <li>7. Acorn Woodland/EnCompass ECE</li> <li>8. Bridges@ Melrose ECE</li> <li>9. Brookfield ECE</li> <li>10. Centro Infantil ECE</li> <li>11. Cox (REACH) State PreK ECE</li> <li>12. Lockwood ECE</li> <li>13. Fruitvale ECE</li> <li>14. Garfield ECE</li> <li>15. Harriett TubmanECE</li> <li>16. Highland ECE</li> <li>17. Hintil ECE</li> <li>18. Oakland Academy of Knowledge ECE</li> <li>19. International ECE</li> <li>20. Laurel ECE</li> <li>21. Lockwood CDC/ECE</li> <li>22. MANZANITA ECE</li> <li>23. MLK Jr. ECE</li> <li>24. Prescott ECE</li> <li>25. Sankofa ECE</li> <li>26. Stonehurst ECE</li> <li>27. United Nation ECE</li> <li>28. Yuk Yao CDC/ECE</li> </ol> |
|   | <ol style="list-style-type: none"> <li>20. Lockwood STEAM</li> <li>21. Lowell-Ralph Bunche</li> <li>22. Lowell-West Oakland Middle</li> <li>23. Madison Primary</li> <li>24. Martin Luther King Jr. Elementary</li> <li>25. McClymonds HS</li> <li>26. Montera MS</li> <li>27. Oakland High School</li> <li>28. Oakland International HS</li> <li>29. Oakland Technical HS</li> <li>30. Peralta</li> <li>31. Sequoia</li> <li>32. Thornhill</li> <li>33. Urban Promise</li> <li>34. Westlake Middle</li> </ol>   |  |  |   |  |



# Enrollment Updates

# Enrollment Process\*

\*Students can enroll in OUSD schools any time throughout the year, this is for budget and planning purposes.

## Final Enrollment Established 2024-25

On the first Wednesday of October, OUSD finalizes it's enrollment count that will be used for projections for the following year

## Enrollment Projections Created for 2024-25

OUSD uses the enrollment from the previous year to set the enrollment projects for the following year based on demographic information and cohort progression modeling

## Determining Students Attending 2024-25

During the first 4 weeks of school, on the 2nd, 5th, 10th, 15th and 20th day, OUSD schools count the number of students that have attended school and drop "no-shows". Classes are balanced and staffing levels are shifted depending on available seats.

## Enrollment Cycle

## Students are Assigned to Schools

Based on these projections and community applications, the Enrollment Office assigns students to schools and grade levels based on the number of "seats" available at each grade level. Students who don't get an initial offer are placed on a waitlist.

## Families Confirm Enrollment in Schools

Families "Confirm" that student/s will attend the assigned school. For families that decide to not take the assigned seat, another students is moved into the "seat" from the waitlist.

# Enrollment vs. Projections

| Grade Span | 8/12 Aeries | Day-2 Counts | Day-5 Counts | 8/21 Aeries | Day-10 Count | Day-15 Counts | 9/3 Aeries | Projections | Delta |
|------------|-------------|--------------|--------------|-------------|--------------|---------------|------------|-------------|-------|
| TK         | 1,091       | 1,056        | 1,082        | 1,092       | 1,120        | 1,130         | 1,108      | 1,170       | (62)  |
| K          | 2,529       | 2,408        | 2,434        | 2,434       | 2,464        | 2,448         | 2,462      | 2,488       | (26)  |
| 6          | 2,139       | 2,006        | 2,078        | 2,100       | 2,129        | 2,119         | 2,121      | 2,098       | 23    |
| 9          | 2,115       | 1,895        | 1,978        | 2,042       | 2,035        | 2,067         | 2,070      | 2,174       | (104) |
| SCP        | 1,789       | 1,378        | 1,491        | 1,724       | 1,511        | 1,580         | 1,744      | 1,699       | 45    |
| TOTAL      | 34,492      | 31,970       | 32,722       | 33,647      | 33,221       | 33,448        | 33,765     | 33,736      | 29    |

Discrepancies between reported counts and Aeries enrollment exist as schools work to confirm enrollment, determining whether some students have left the school or are struggling with chronic absenteeism. Additionally, some schools don't do counts, but are including in Aeries, such as certain ECE or Alt Ed sites.

12



# Enrollment Timeline

| Enrollment Milestone              | Date      | Description  |
|-----------------------------------|-----------|--|
| On-time application window opens  | 12/1/2023 | We encourage all families to apply in the on-time window, as this gives families the best opportunity to access their preferred school.  |
| On-time application window closes | 2/10/2024 | This is the deadline for an application to be considered on-time. Any application submitted during this time period is considered on-time.   |
| Late application window opens     | 2/11/2024 | Families who did not submit an application during the on-time window can begin submitting applications at this point.  |
| On-time offers released           | 3/6/2024  | Families will be offered a place at a school and/or be placed on a waitlist at this time.  |
| Intent to Return Forms            | 3/20/2024 | On this date, families will be asked to confirm whether or not they are returning to their current school for the following school year.   |
| Late offers released              | 4/3/2024  | Families will be offered a place at a school and/or be placed on a waitlist at this time. Deadline 4/22  |
| Bi-weekly late offers begin       | 4/22/2024 | Starting on this date, the enrollment office will make offers for schools with space to families on the waitlist, and to families submitting late applications every two weeks on Monday.  |
| Weekly late offers begin          | 7/1/2024  | Starting on this date, the enrollment office will make offers for schools with space to families on the waitlist, and to families submitting late applications every week on Monday.   |
| 2x weekly late offers begin       | 7/29/2024 | Starting on this date, the enrollment office will make offers for schools with space to families on the waitlist, and to families submitting late applications three times per week on M, & Th.  |
| Counts begin                      | 8/13/2024 | Schools being submitted official counts to the Enrollment office to reconcile attendance, enrollment, and Aeries   |
| Open Enrollment ends              | 8/30/2024 | On the 15th day of school the waitlist will close. Students enrolled in OUSD schools will be expected to remain at their schools for the remainder of the year. Students who have not yet enrolled will be offered spots at available schools. |

# Conclusion of Open Enrollment

- Each year, we close the open enrollment period at the **15th day of school**, and dissolve all remaining waitlists
- This concludes the period of students transferring between schools as a function of a family preference, and allows schools, families, and students to anchor in to the school and build stability
- Current OUSD students may only transfer due to a verified “hardship” such as an address change or return to a neighborhood school
- Incoming OUSD students may enroll at any school with available space, on a first-come-first-serve basis

# Enrollment Counts

- Schools have completed counts on for **Day-2, -5, -10 and -15.**
- These counts are instrumental in identifying accurate enrollment data for each school, dropping no-show students, and **creating room for new families** and students on waitlists.
- The last official counts will occur on Day-20
- Day-20 counts are used to **reconcile enrollment against base staffing** allocations.
- **Enrollment is finalized on Wednesday, October 2, 2024**

# Many schools still have TK availability

- Although some TK programs filled immediately and have long waitlists, other programs remain available for families.
- Students are immediately eligible for TK if they have a birthday between **09/02/2019** and **06/02/2020**
- The following schools have **at least five TK** seats available:

Burckhalter  
Madison Primary

Bridges  
Reach (2 classes!)

Lockwood (2 classes!)  
Think College Now



# Enrollment Stabilization

## Ongoing work

- ❑ New signage at Global Family Elementary School to improve community visibility and curb appeal



# Enrollment Stabilization

## Upcoming work

- ❑ Each of the last two years, the Enrollment Department has used a wide array of data to identify around 20 Enrollment Focal Schools
  - ❑ These schools receive enrollment assets, as well as technical and adaptive support
- ❑ We are reviewing underlying assumptions to the model against last year's data, and gathering data for this year
- ❑ Enrollment Focal Schools for 24-25 will be finalizing in early September, after 20-Day counts



# School Highlights



# Oakland Goes Outdoors Leads Life Academy Students on a Creek CleanUp

**Life Academy kicked off the school year with its first Oakland Goes Outdoors day trip.** The 9th grade class visited Dimond Park in Oakland, where students got up close and personal with Sausal Creek and nature while they did a creek clean up, and took a three-mile hike around the park.

The lessons they learned included growing a love of learning, integrity, fearlessness, and empathy. The students were encouraged to honor and recognize the place, its people, and its history. It was a beautiful day and a great way to start the year.

Oakland Goes Outdoors takes OUSD students on field trips around the Bay Area to introduce them to nature throughout the school year.





# Bridges Academy Celebrates New Play Yard Finished by Eat. Learn. Play.

The campaign to transform elementary playgrounds across the District by Eat. Learn. Play. Foundation continued with a ribbon-cutting ceremony at Bridges Academy on August 28, giving the campus the chance to enjoy the final part of their revamped play yard.

**Eat. Learn. Play. and KABOOM! installed a big play structure with three slides and lots to climb, along with a nature space, and an outdoor classroom.** That's all on top of the school's new soccer pitch, new trees, and lots of painted features on a yard that has been totally transformed.

The District will see more transformed playgrounds in the coming year, starting with REACH Academy. That project is underway this week.

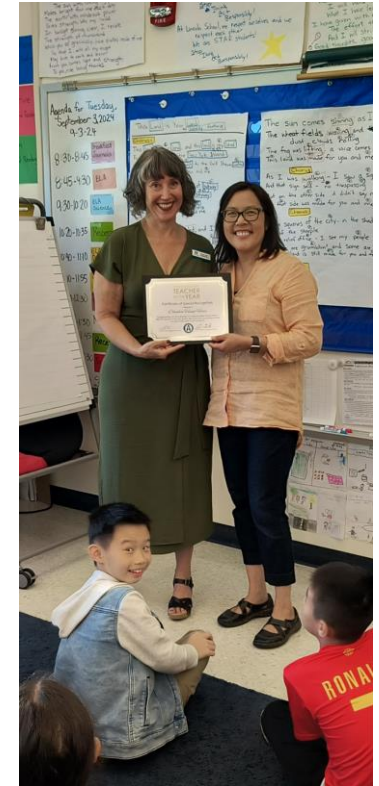


# County Superintendent Celebrates OUSD Teachers of the Year

**Alameda County Superintendent of Schools, Alysse Castro, visited three schools over the past week to congratulate the District's three 2024 Teachers of the Year.**

Castro visited West Oakland Middle School and teacher Jazmine Njissang (left photo) and Lincoln Elementary and teacher Claudia Hung-Haas (right photo) last week. This week she stopped by Edna Brewer Middle School to visit teacher Sarah Ben-Israel.

Castro observed each of the teachers in action, then told the students how amazing their teachers are, and presented each teacher with a certificate commemorating the honor.







# Community Schools, Thriving Students

[www.ousd.org](http://www.ousd.org)



@OUSDnews



**OAKLAND UNIFIED  
SCHOOL DISTRICT**

*Community Schools, Thriving Students*

1011 Union Street, Oakland, CA 94607