

LWP

LIONEL WILSON COLLEGE PREP
AN ASPIRE SCHOOL

Charter Renewal Initial Public Hearing

August 28, 2024

ASPIRE LIONEL WILSON COLLEGE PREPARATORY ACADEMY

LWP is an Aspire Public School

At Aspire, we proudly partner with and serve families and students at 9 schools in Oakland, Richmond, and East Palo Alto.

6 schools are authorized by Oakland Unified School District.



Vision

Aspire scholars are prepared and empowered to build a fulfilling and liberated future for themselves and their communities.

Together we will develop the skills and mindsets necessary to design an *equitable reality* for ourselves, our families, our community, and our world.



Aspire LWP



A Sobrante Park Community School

Chartered in 2002. At the time was the first high school to open in Oakland in over forty years

Renewed in 2007, 2012, 2016

Here tonight to renew for 2025-2030

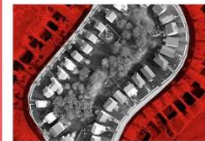


Achievements



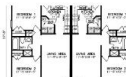


City Planning to Create a More Equitable Reality in East Oakland



I will be focusing on aiding the housing crisis in the Bay Area.

Because I believe that low density multi family housing would help the housing crisis I will be designing a duplex.



I chose the housing crisis because living in Oakland exposes one to high costs of living while in a dangerous and poverty ridden community. This means residents of Oakland often can't afford to live in a residence that suits their needs. This is worsened by the large amounts of single family residences which reduce the amount of land that can be used for bigger housing developments to reduce the housing crisis and decrease high costs of living. Although people don't want the appearance of their community to be affected by large or high rise buildings and can go as far as to sue their developers there are compromises we can make such as low density multi family housing which include duplexes, triplexes, and quadplexes.

This problem is yet to be solved because developers don't want to prioritize the construction of affordable housing and low density housing because it is usually much less profitable than luxury apartments and expensive single family houses. "One consequence of this is the proliferation of single-family all-inclusives in desirable urban neighborhoods. If the land is valuable, and all you can build on it is a single-family home, you're not build a very expensive single-family home" (Gering Towne, Hergert). Similar logic applies to luxury apartments or residences in desired locations. When land and materials are costly, developers will tend to turn to what will make them the most profit to recuperate the money they put into the initial construction. Zoning restrictions have also been a huge contributing factor into why developers don't build multi-family housing. As of only recently has this issue been resolved in California through the passing of a law that bans new zoning for single-family homes.



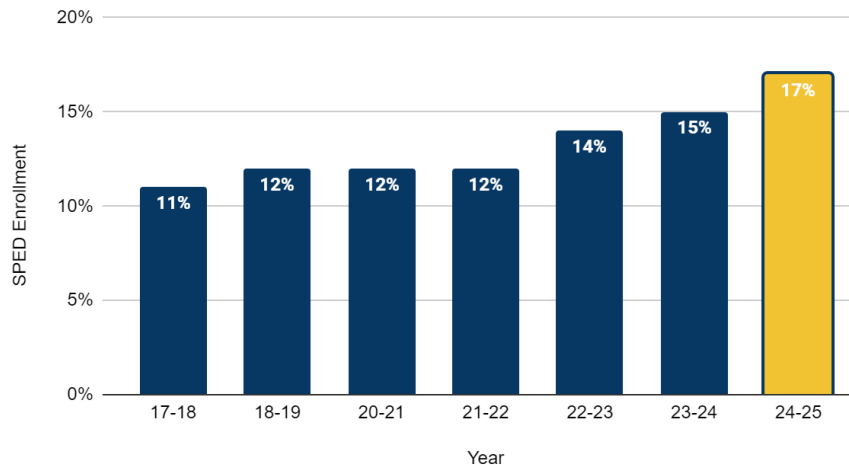
- | | | |
|----------|---|--|
| A |  | History/
Social Science
2 Years Required |
| B |  | English
4 Years Required |
| C |  | Mathematics
3 Years Required
4 Years Recommended |
| D |  | Laboratory Science
2 Years Required
3 Years Recommended |
| E |  | Language Other
Than English
2 Years Required - 3 Years Recommended |
| F |  | Visual and
Performing Arts
1 Year Required |
| G |  | College Preparatory
Electives*
1 Year Required |



Inclusion Model

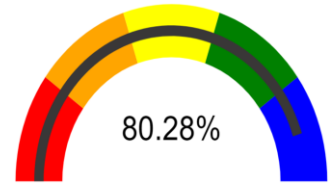


LWP's Special Education Enrollment



A Community of Belonging

MLL progress continues to climb from 36% in SY 21-22 to 63% in SY 22-23 with the launch of our Newcomer program. Projected ~80% in SY 23-24.



Suspension rate went from 8% in SY 22-23 to 4% in SY 23-24. 2.9% in SY 23-24.



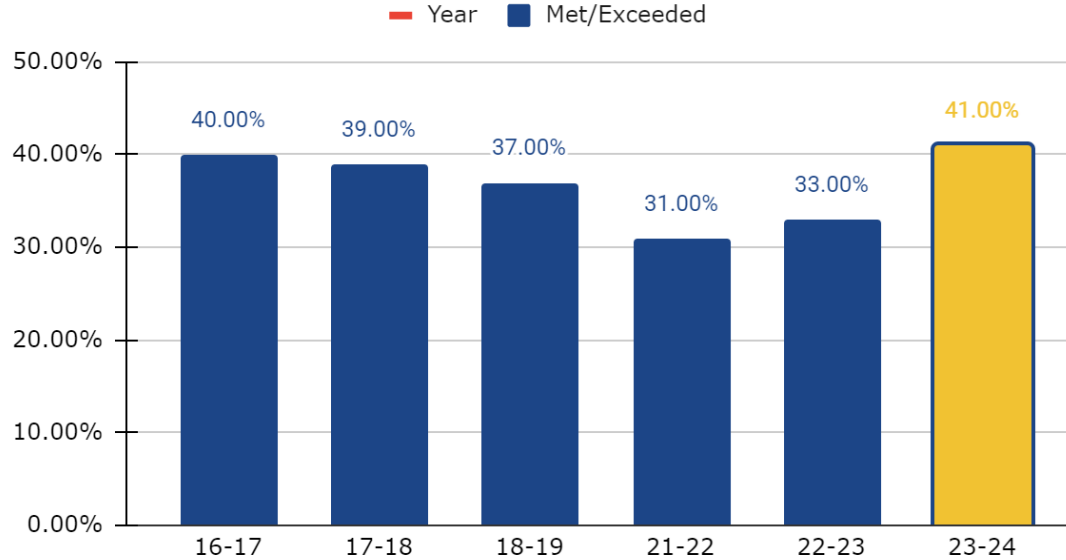
Verified Data

LWP iReady Median % of Typical Annual Growth						
	21-22		22-23		23-24	
	Math	ELA	Math	ELA	Math	ELA
Schoolwide	77%	145%	108%	159%	136%	129%



CAASPP

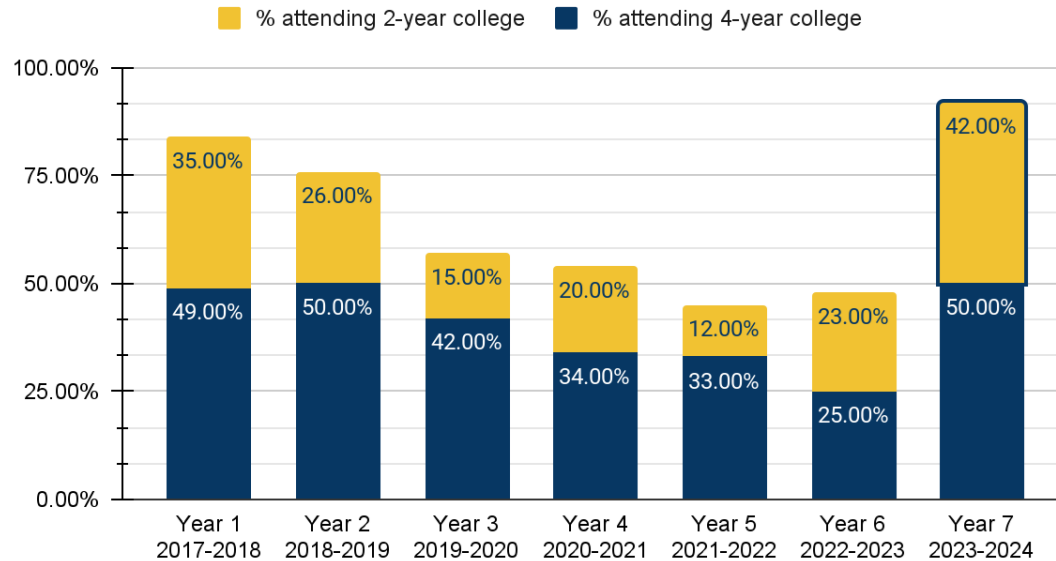
ELA Outcomes



Transforming Futures



College, Career, and Community



Education is Liberation

