



OAKLAND UNIFIED  
SCHOOL DISTRICT

# Program Management Services

FACILITIES COMMITTEE  
PRESENTATION

March 12, 2021



# THE B&D TEAM IS THE RIGHT PARTNER FOR OAKLAND UNIFIED.

- 01** We understand how to navigate participatory design, collaboration, and decision-making at the district level.
- 02** Our depth of experience extends beyond management of design and construction— and includes planning and development advisory services and community interface.
- 03** B&D is a national program management leader on K-12 projects.



01

# Team Overview



# Team Overview

BRAILSFORD & DUNLAVEY

Brailsford & Dunlavey's mission is to make **OUSD** the strongest owner possible.



B&D is a 130-person firm, locally headquartered in DC, with an office San Francisco



B&D is a **Top 50 Program Management Firm** in the US according to *Engineering News-Record*

**28**

Years in the industry

**\$40B+**

In developed projects

**200+**

K-12 projects

**1,500+**

Total projects completed

**50+**

Clients in CA

# Team Overview

## B&D'S PROJECT TEAM PARTNERS



### Project Estimating

Leland Saylor Associates (LSA) is a **certified small and veteran owned** design and construction consulting firm providing expertise in the areas of cost estimating, value engineering, and claims analysis.



### Project Management

Colland Jang Architecture is an **Oakland certified local business** and full service architectural firm with over 30 years of experience in the design and project management.



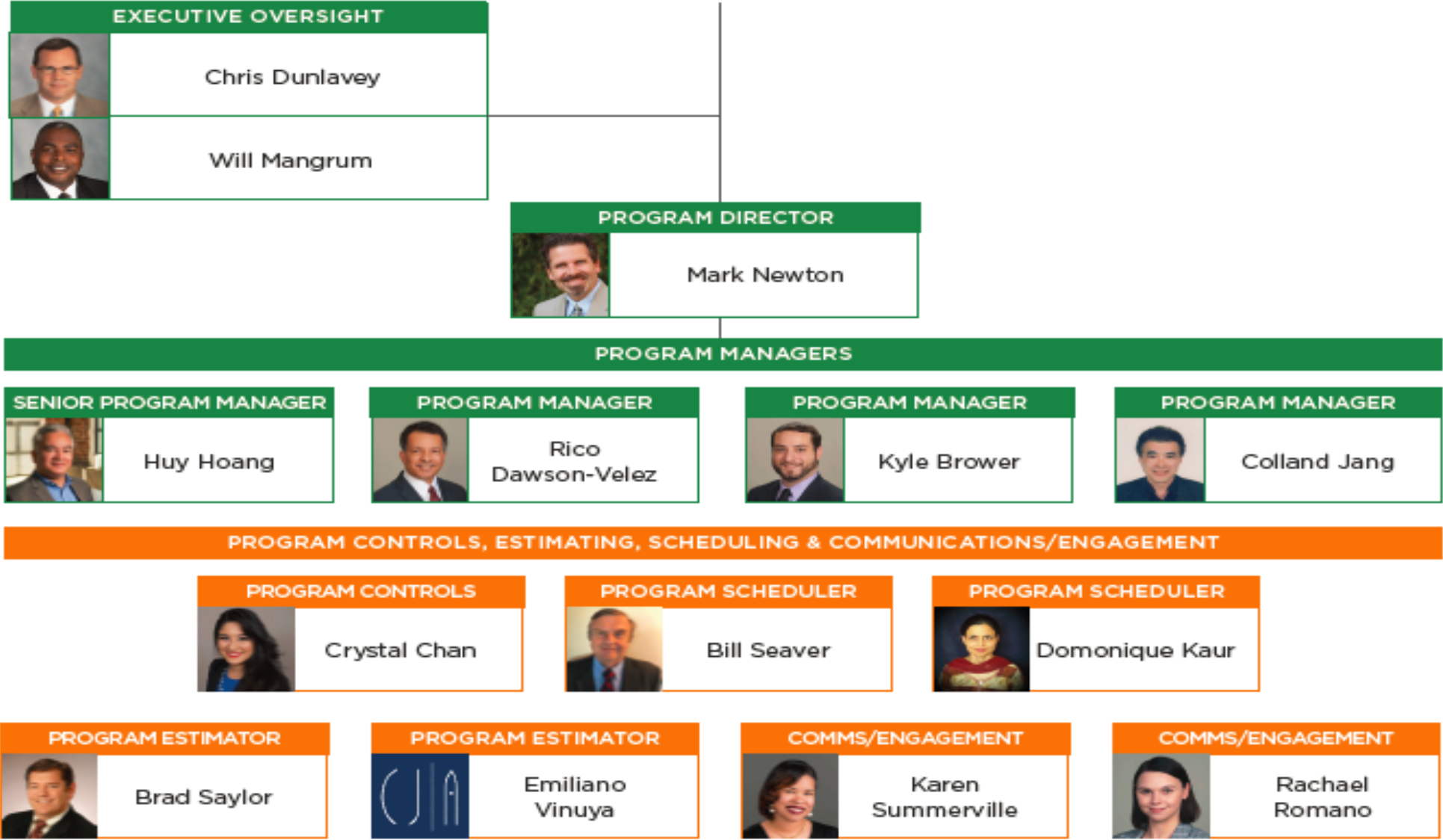
### Project Scheduling

Dabri is certified as a **Disadvantaged Business Enterprise (DBE)**, and **Local Business Enterprise (LBE)** focused on construction management, cost estimating, scheduling and project services.



# Team Overview

## A COMPREHENSIVE TEAM



## Our Team Commits to OUSD:



That we understand and deeply respect that the District views Measure Y as an opportunity for effecting positive change



That B&D has lived the challenges OUSD faces alongside you and your staff, and we know what those challenges entail.



That B&D embraces tough, fact-based decisions in the planning process, with an expectation of disciplined consistency.



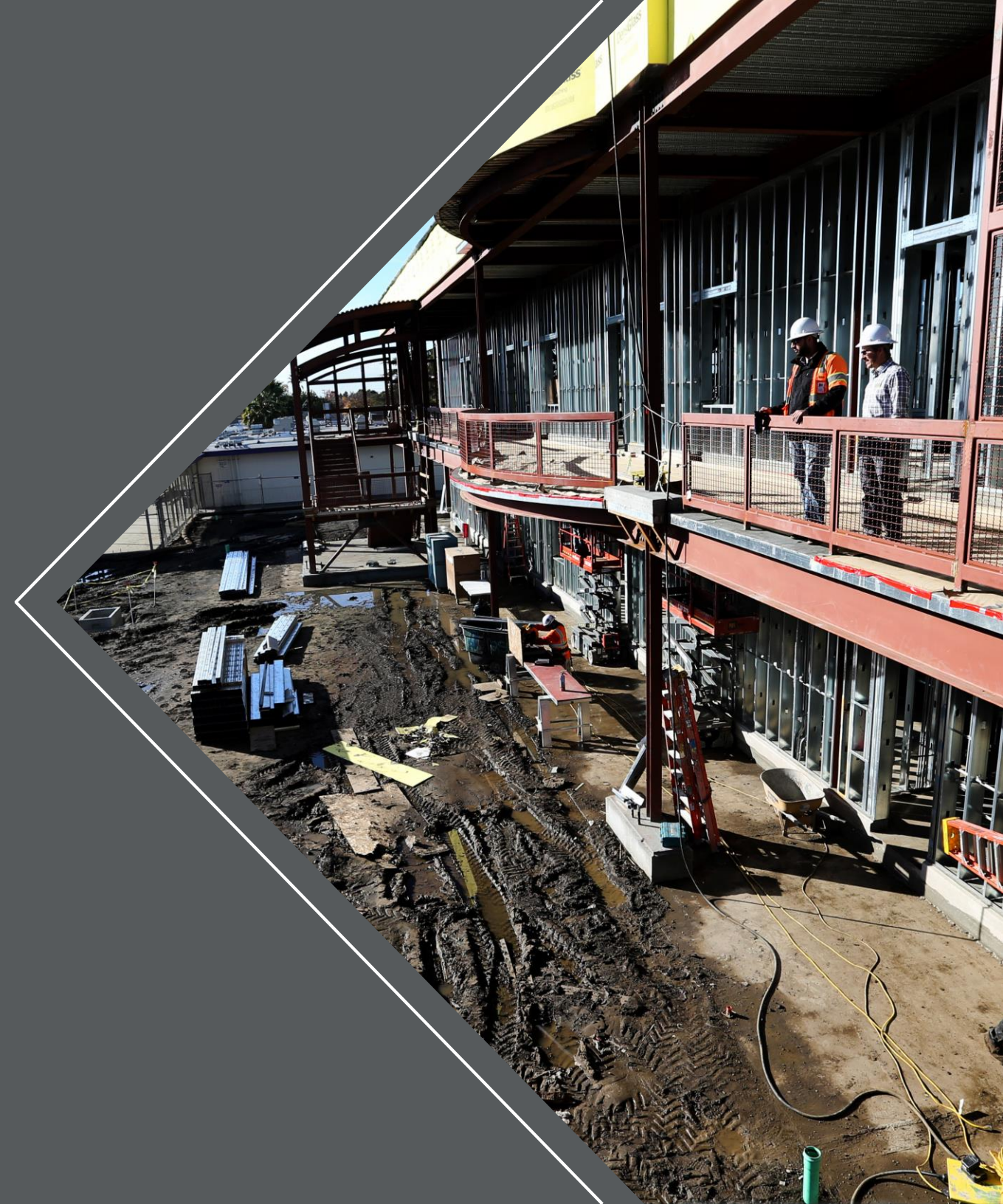
That B&D acknowledges the changes in OUSD board membership as an opportunity to encompass fresh perspectives



B&D values stakeholder engagement and is prepared to assist OUSD in grappling with the threat of site closures

03

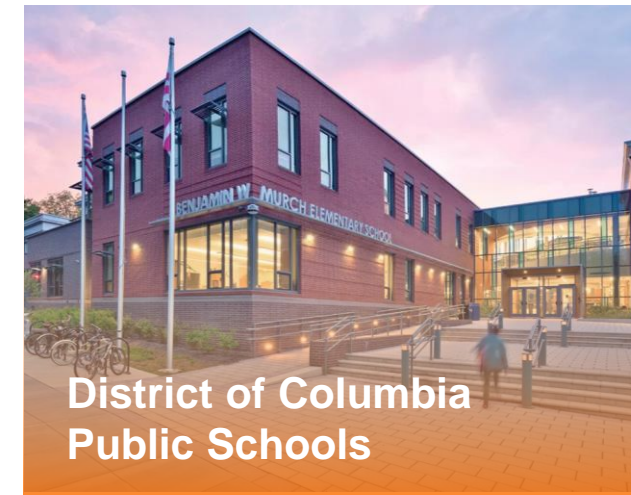
# Similar Programs & Projects





# Similar Projects

## OUR K-12 PROJECT EXPERIENCE





04

# 120 day Work Plan



# 120 day Work Plan Approach Categories:



Program Analysis & Due Diligence



Procurement Support Services



Communications



Schedule




Program Administration



# 120 day Work Plan Approach:

Develop Roles & Responsibilities Matrix for the Program Team to ensure accountability, transparency, and continuity.

Roles & Responsibilities Matrix									
Draft									
Issued:									
									
Legend									
1 = Primary Responsibility				A = Initiate					
2 = Review / Comment				B = Execution of Contract Work					
3 = Advise				C = Approval of Work					
Task / Activity	District Leadership / Procurement	Program Manager	Financial Manager	District PM	Construction Manager	Facilities Committee / CBOC	District B&G	Architect/ Consultant	IOR
Procurement Phase - Major Program Contract (ex. Program Manager, Construction Manager)									
Form Selection Committee	1	3							
Prepare RFP Documents	1/B	1/A		2					
Prepare & Issue Advertisement	1/A	2		2					

# Thank you.

VISIT [BDCONNECT.COM](https://bdcconnect.com)  
FOR MORE INFORMATION.

