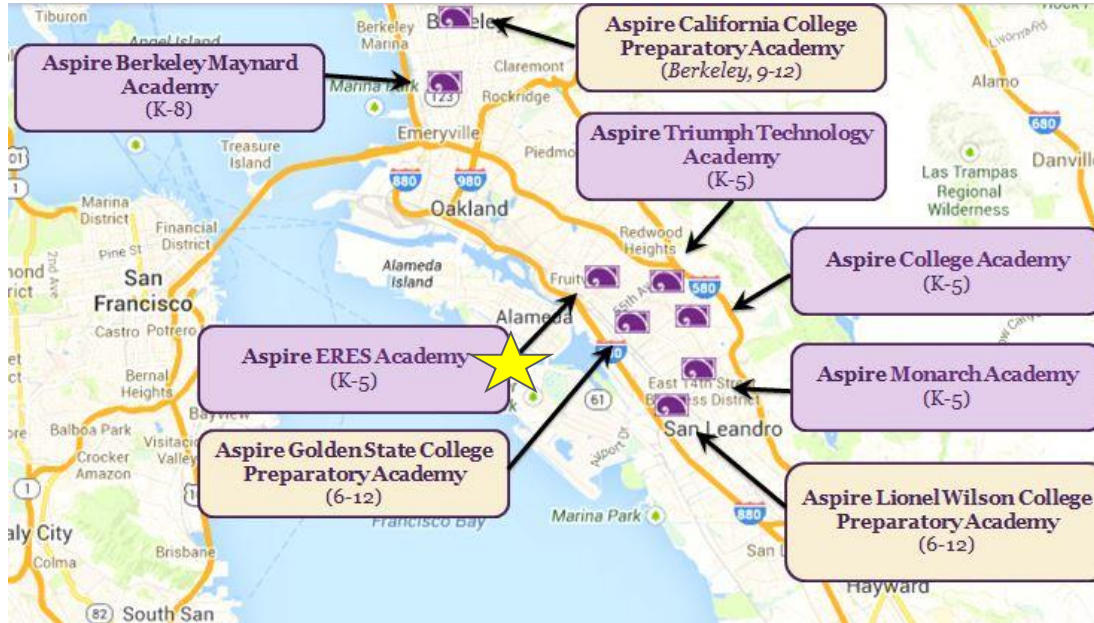




Aspire ERES Academy Material Revision Public Hearing

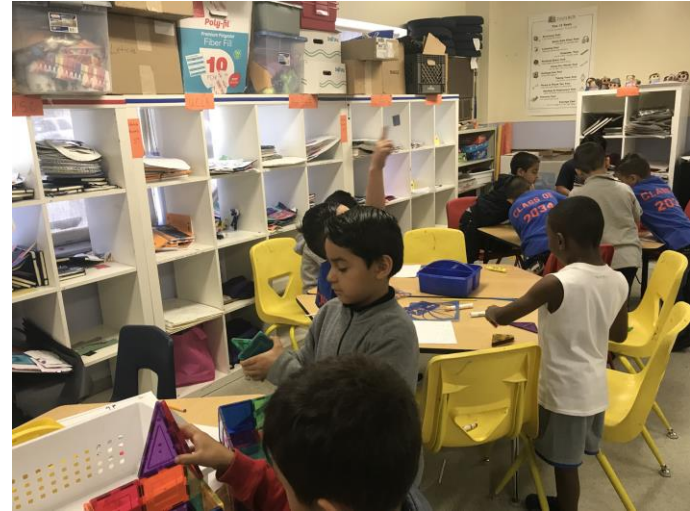
January 27, 2021

ERES is one of seven Aspire schools in Oakland



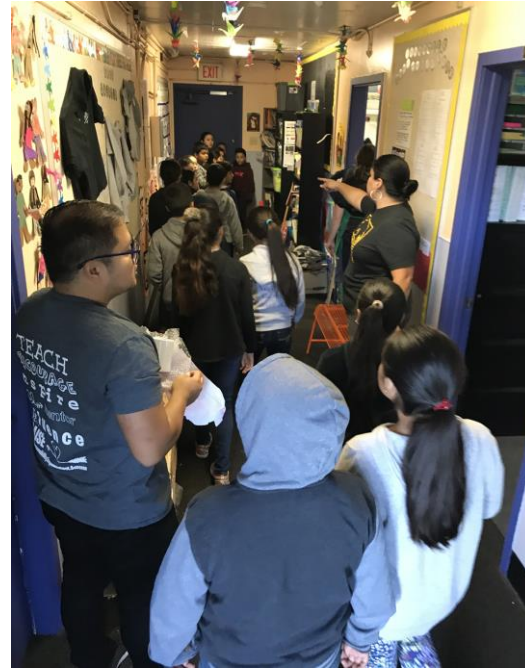
- **7 TK-12 Schools:** 5 TK-5/TK-8 schools, 2 Secondary 6-12 schools
- **3,000 students**
 - ~10% of all students in OUSD and 21% of all charter students in Oakland
- **98% students of color**
- **90% eligible for free/reduced lunch**

Our Current ERES Facility is Dated, Cramped and Inadequate



The current building includes only 9 classrooms that are significantly smaller than standard specifications. ERES students have very little space to move around within the classrooms and limited outdoor space.

At ERES, maintenance and repair often interrupt instruction



At left: Our fifth-graders head down to the church basement for lunch.

At right: Our main school hallway and transition areas are often severely congested. Rain and sewage floods and structural issues impact instructional time.

Aspire has worked diligently to find a facility solution for 10 years, culminating in a successful \$33M Prop 1D grant award in 2014

Dolores Huerta Community Learning Charter

1998 First Oakland charter school founded by a coalition of families and community leaders.

Academic struggles persist.

Aspire partners with OUSD and DHL

2008 Aspire submits a new petition to open ERES Academy. Aspire explores all facility options. OUSD approves Aspire's 1D grant proposal.

Aspire partners with city and OUSD

2014-2018 State of CA approves \$33M investment in Aspire ERES. Aspire identifies a nearby site and develops the site at the Derby location.

The new facility on Derby Street was our best and only option. There is no viable Plan B for the Aspire ERES facility.



On 6/11/14, the OUSD BOE voted unanimously to approve Aspire's 1D grant including expanding the school to serve 348 additional pupils



RESOLUTION OF THE BOARD OF EDUCATION OF THE OAKLAND UNIFIED SCHOOL DISTRICT RESOLUTION NO. 1314-1115

CERTIFICATION OF UNHOUSED PUPILS AS RELATED TO CHARTER SCHOOL APPLICATIONS FOR FACILITIES FUNDING

WHEREAS, the Charter Schools listed below have requested that the Oakland Unified School District Board of Education discuss and certify to the number of projected unhoused pupils, if any, that will be served by the proposed Charter School projects, pursuant to School Facility Program Regulation Section 1859.162.1(a); and

WHEREAS, a condition of processing the Charter School applications under the Charter School Facilities Program is a resolution from the Governing Board of Education of the School District in which the Charter School is physically located which certifies to the number of District projected unhoused pupils, if any, that will be served by the proposed Charter School project; and

WHEREAS, pursuant to School Facility Program Regulation Section 1859.162.1(a) the Oakland Unified School District Board of Education is required to discuss this issue as an action item at a regularly scheduled, publicly held board meeting; and

WHEREAS, the proposed Charter School projects are anticipated to be physically located within the boundaries of the following High School Attendance Areas within the Oakland Unified School District:

<u>Proposed Charter School Project</u>	<u>High School Attendance Area Location</u>
Aspire Berkley Maynard Academy	Oakland/Oakland Technical HSAA
Aspire ERES Academy	Fremont HSAA

WHEREAS, the Aspire Berkley Maynard Academy proposed project will provide facilities for an existing Charter School Program currently housed in an Oakland Unified School District facility; and

WHEREAS, pursuant to School Facility Program Regulation Section 1859.50, the Oakland/Oakland Technical Super High School Attendance Area at this time does not generate projected unhoused pupils that would be served by the proposed Charter School projects; and

WHEREAS, the Aspire ERES Academy proposed project plans to house 444 K-6 pupils. However, as 167 K-6 pupils are already housed at the site, this project is projected to serve an additional 277 K-6 projected unhoused pupils. Therefore, there are 277 unhoused K-6 pupils that would be served by the project.

WHEREAS, the Aspire ERES Academy project plans to request 120 7-8 pupils. However, as 55 7-8 pupils are already housed at the site, this project is projected to serve an additional 65 7-8 pupils. Therefore there are 65 projected unhoused 7-8 pupils that would be served by the charter.

WHEREAS, Exhibits A-1 and A-2, attached, outline the methodology utilized to determine the number of unhoused pupils which would be served by each of the proposed projects.

NOW THEREFORE, BE IT HEREBY RESOLVED that the Oakland Unified School District Board of Education certifies the following projected unhoused pupils in the above referenced High School Attendance Areas that will be served by the proposed Charter School projects:

- 1) Aspire Berkley Maynard Academy
0 Unhoused K-6 Pupils, 0 Unhoused 7-8 Pupils
- 2) Aspire ERES Academy
277 Unhoused K-6 Pupils, 65 Unhoused 7-8 Pupils

PASSED AND ADOPTED by the Board of Education the Oakland Unified School District, this 11th day of June, 2014, by the following vote:

AYES: Jody London, Jumoike Hinton Hodge, Anne Washington, Roseann Torres, Christopher Dobbins, Vice President James Harris and President David Kishiba

NOES: None

ABSTAINED: None

ABSENT: None

CERTIFICATION

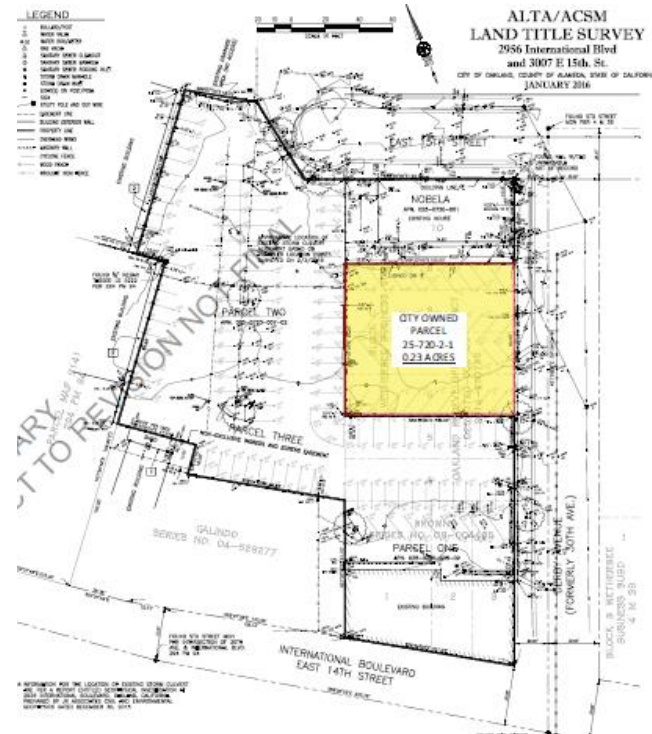
I hereby certify that the foregoing is a full, true and correct copy of a Resolution adopted, at a Regular Board Meeting of the Governing Board of the Oakland Unified School District held on June 11, 2014.

File ID Number: 14-0848
Introduction Date: 6-11-14
Enactment Number: 14-1115
Enactment Date: 6-11-14
By:

Secretary, Board of Education



Since 2015, Aspire has worked with the City of Oakland to acquire and develop the vacant, underutilized parcels



Aspire's developer, TPC, already owns the two private parcels surrounding the final parcel, which is city-owned.

The final parcel is a mere 9,000 square feet of city-owned land.

1,500 supporters have signed on to our efforts to purchase the Derby Parcel

Support A New Facility for Aspire ERES Academy in Oakland



Aspire ERES TK-8 Academy started this petition to [Oakland City Council, District 1 Dan Kalb and 8 others](#)

Aspire ERES TK-8 Academy, a public charter school serving 220 students in the Fruitvale neighborhood, has been located in a constrained and cramped facility with extensive maintenance issues for the past nine years. Our students have very limited play space and endure maintenance issues on a regular basis. Aspire has received a \$30M grant from the state of CA to build a new facility which is just 11 miles away. Our new facility will

1,383 have signed. Let's get to 1,500!



Kelly Brown signed this petition



Gayle Adams signed this petition



Aspire ERES TK-8 Academy:
Support A New Facility for Aspire...

Share on Facebook

Send a Facebook message

Send an email to friends

Tweet to your followers

Copy link

Embed

Show this petition to more potential supporters



Aspire ERES Academy is in jeopardy of closing.

- With 237 TK-8 scholars enrolled & a **waitlist of over 180**, ERES Academy meets a need in the Fruitvale neighborhood in Oakland.
- ERES Academy has been in an **insufficient facility** that limits enrollment and that compromises our ability to provide a robust, rigorous educational experience for all scholars.
- Without a facility and an increase in enrollment, ERES Academy will close.



Aspire ERES Academy is a quality school choice for families and should not close.

- 180 students on the waitlist
- Double digit SBAC gains in 2018-19 in all subgroups
- Strong, values aligned school leader
- Strong parent, student and staff culture
- High staff retention



Academic Excellence. Educational Equity



PRINCIPAL OGIER

- ▶ 7th year as Aspire administrator, 4th year as ERES principal
- ▶ 12th year at Aspire
- ▶ UC Berkeley Principal Leadership Institute Cohort 15
 - ▶ Aspire Mentor Teacher
 - ▶ Aspire-OUSD PALS Literacy Coordinator



ASPIRE ERES ACADEMY TK-8

Students

- ▶ **237** Students in Grades TK-8
- ▶ **97%** FRL
- ▶ **93.5%** Latino/a
- ▶ **2.8%** African-American
- ▶ **51.2%** English Language Learners
- ▶ **13.4%** Special Education



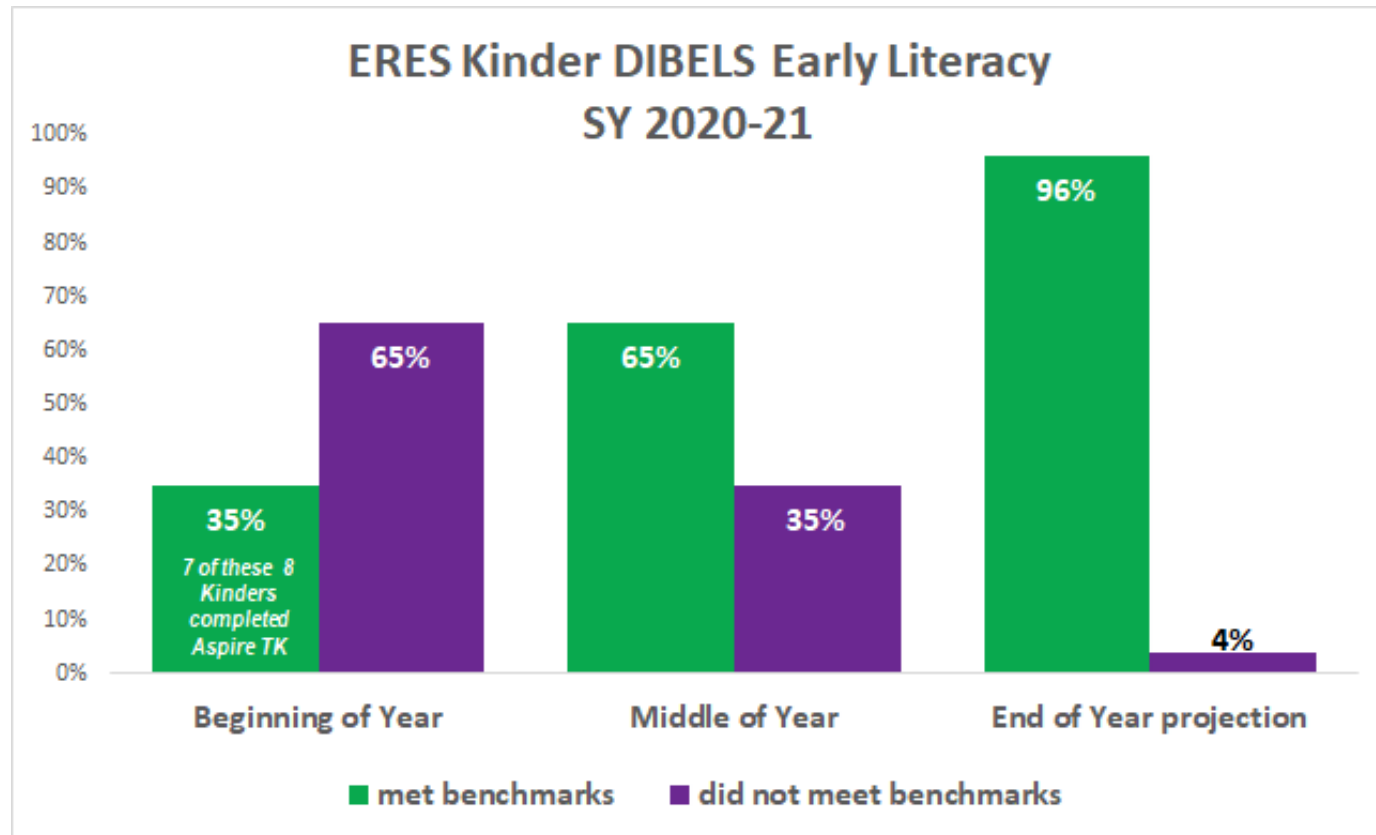
OUR UNIQUE TK-8 PROGRAM

- ▷ **Multi-year literacy focus**
 - ▶ Tiered literacy supports
 - ▶ Strong **early literacy focus** including SEEDS
- ▷ Social-emotional learning with **tiered supports** including RULER
- ▷ **Blended Learning**
- ▷ **5 Pillars of Anti-Racism**



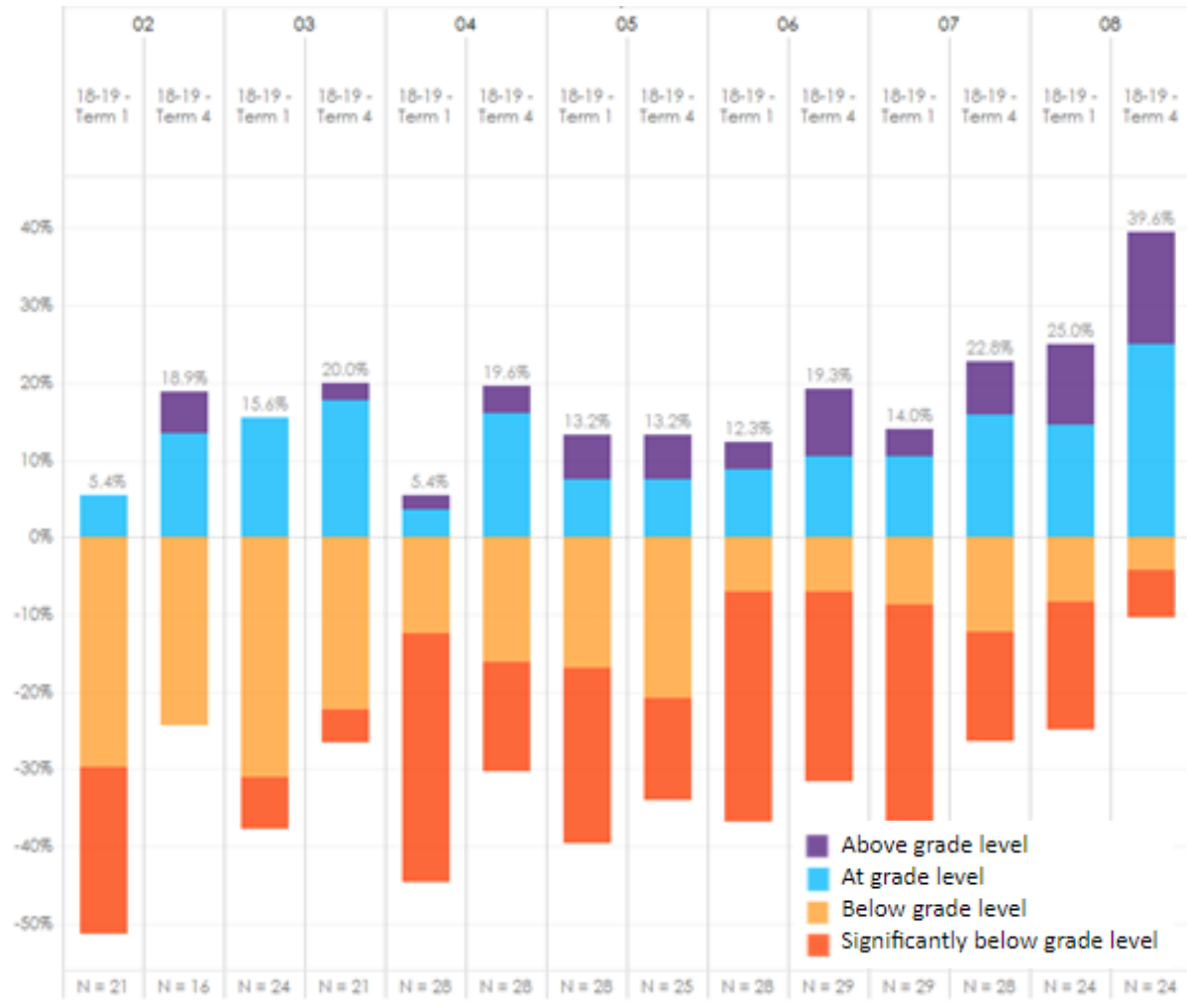
Early Literacy Letter Growth for Kinder - 2020-2021

Kindergarten students demonstrate growth in early literacy from beginning of year in exclusive distance learning program.



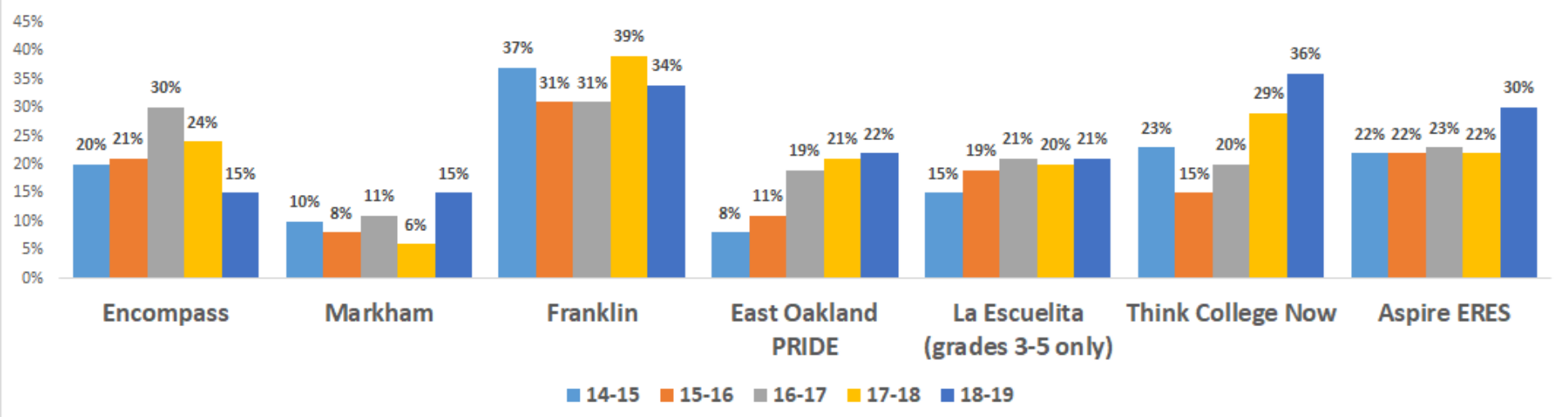
ERES SY 2018-19

**Scholars
increase
reading levels
from beginning
to end of year
as measured by
STAR**



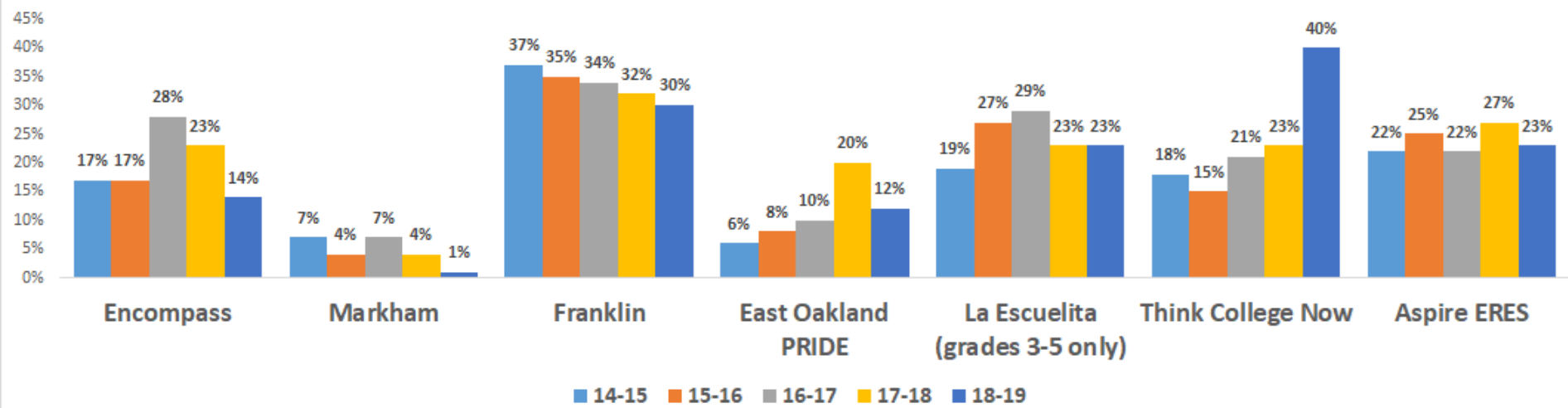
ERES ELA Results Compared to Similar Neighboring Elementary Schools

2018-19 Academic Performance Comparison Elementary ELA SBAC



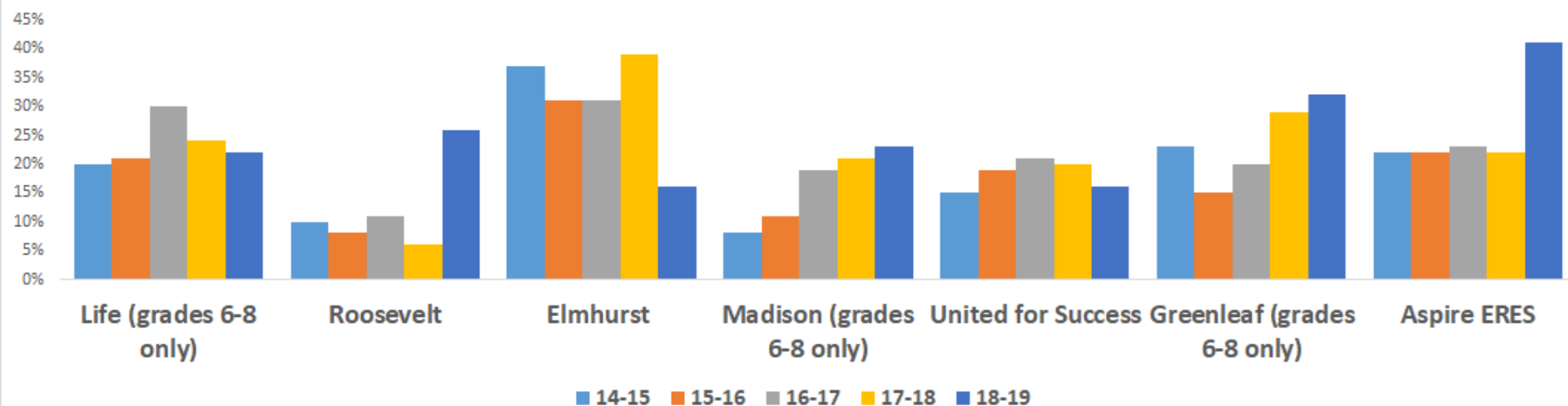
ERES MATH Results Compared to Similar Neighboring Elementary Schools

2018-19 Academic Performance Comparison
Elementary MATH SBAC



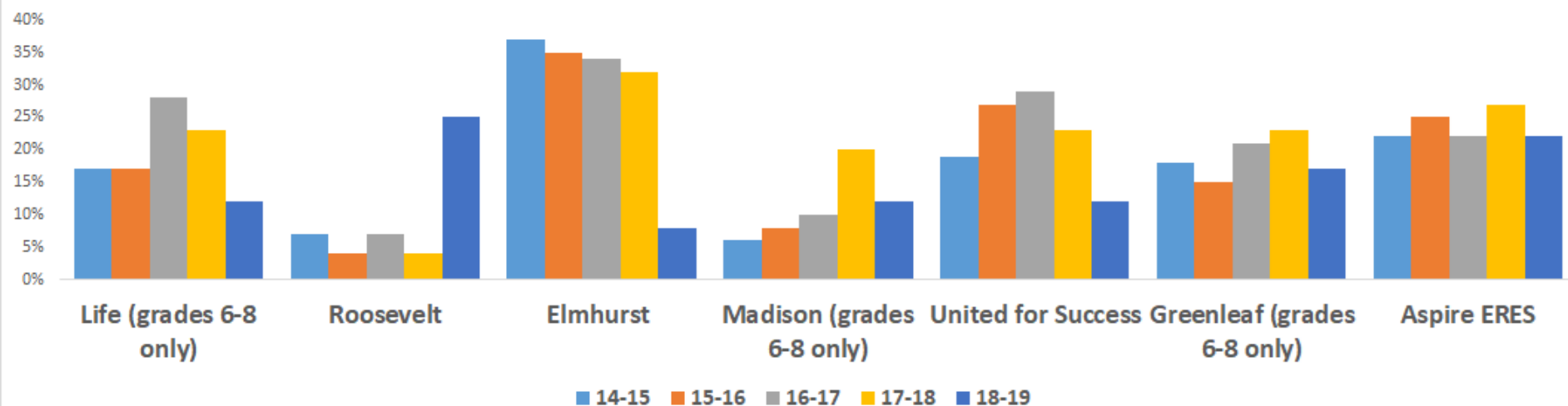
ERES ELA Results Compared to Similar Neighboring Middle Schools

2018-19 Academic Performance Comparison
Secondary ELA SBAC



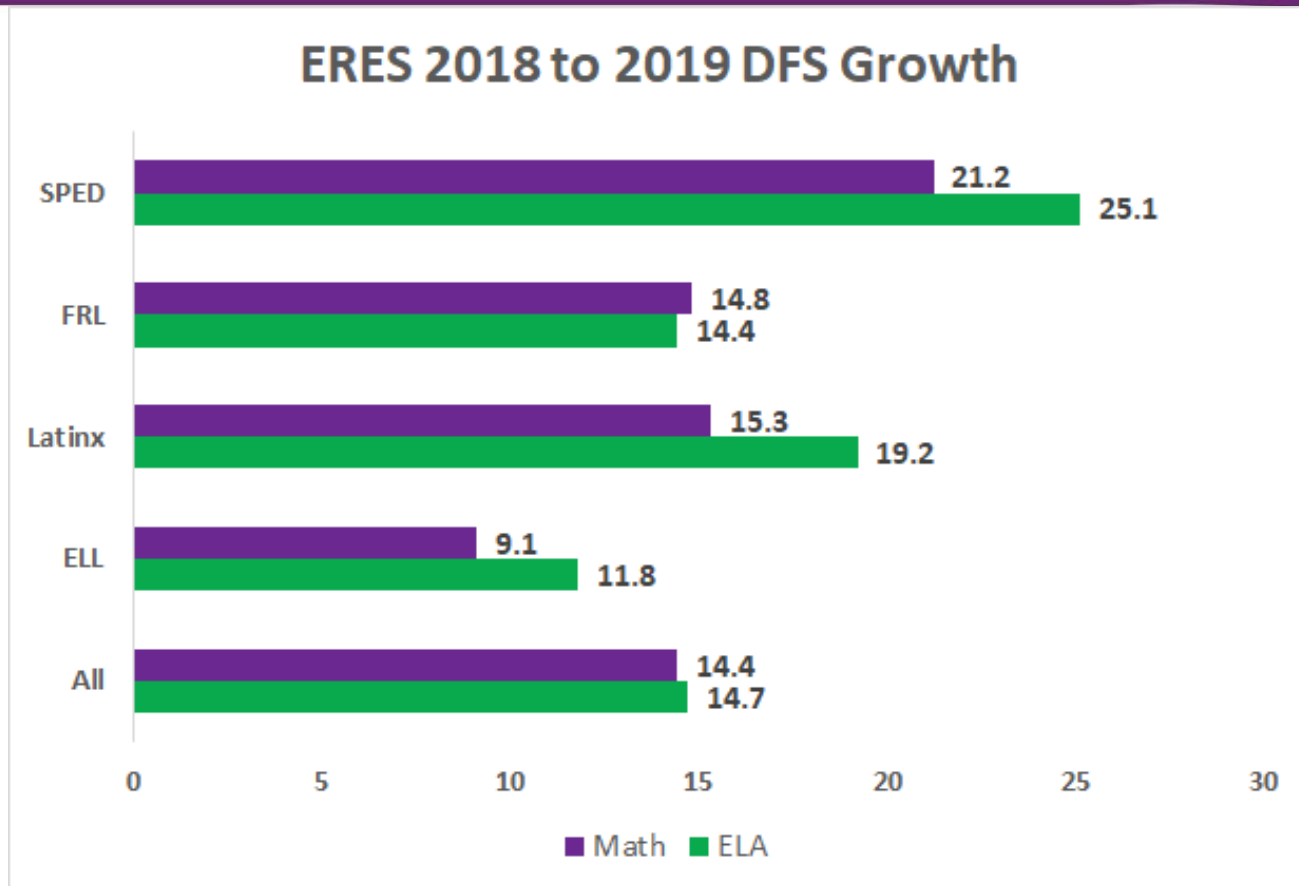
ERES MATH Results Compared to Similar Neighboring Middle Schools

2018-19 Academic Performance Comparison
Secondary MATH SBAC

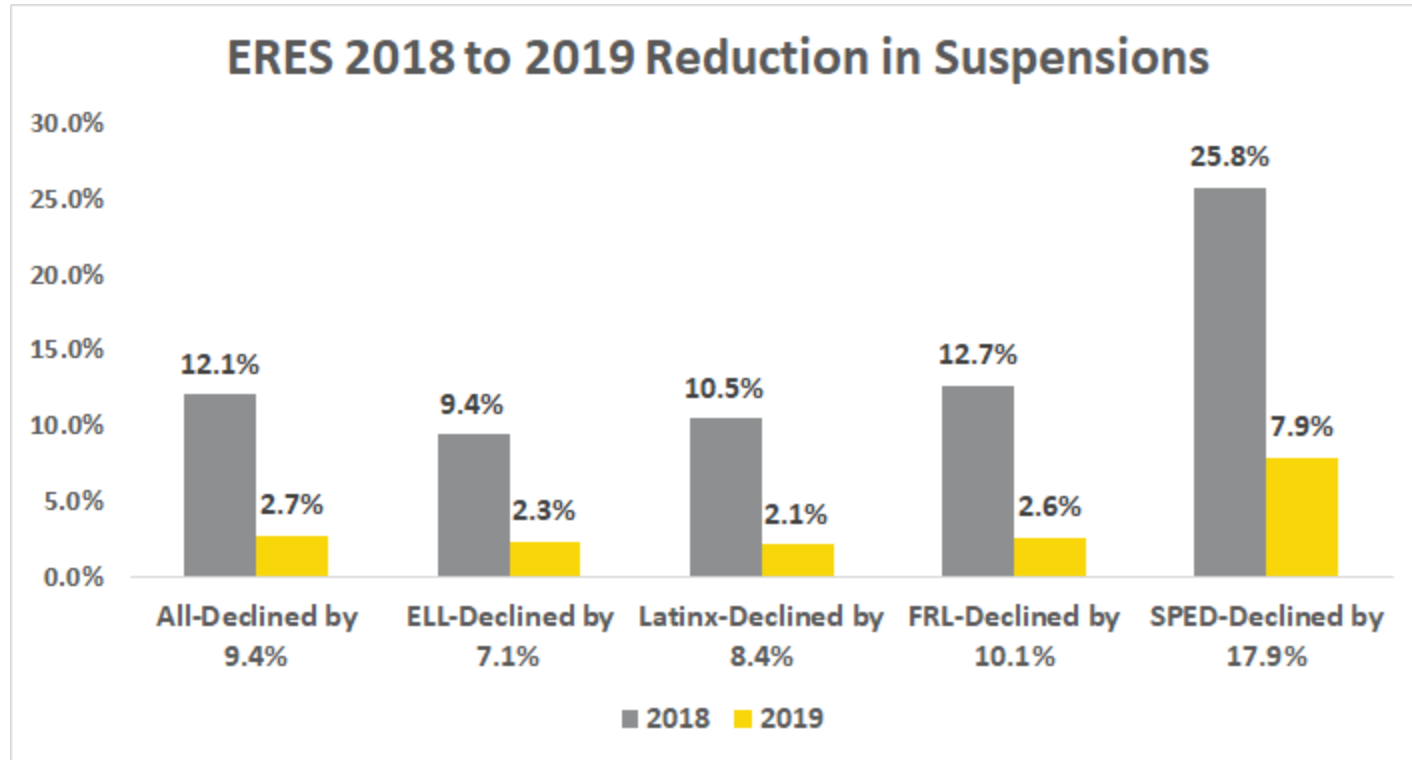


2018 CA School Dashboard Outcomes	2019 CA School Dashboard Outcomes	Growth
<u>ELA DFS</u> All Students: 46.2 pts below standard English Learners: 60.8 pts below standard Hispanic: 48.4 pts below standard FRL: 50 pts below standard SPED: 130.0 pts below standard	<u>ELA DFS</u> All Students: 31.5 pts below standard English Learners: 49 pts below standard Hispanic: 29.3 pts below standard FRL: 35.6 pts below standard SPED: 104.9 pts below standard	<u>ELA DFS Growth</u> All Students: 14.7 pt growth English Learners: 11.8 pt growth Hispanic: 19.2 pt growth FRL: 14.4 pt growth SPED: 25.1 pt growth
<u>Math DFS</u> All Students: 71 pts below standards English Learners: 75.5 pts below standards Hispanic: 71 pts below standards FRL: 73.3 pts below standards SPED: 150.9 pts below standard	<u>Math DFS</u> All Students: 56.6 pts below standards English Learners: 66.4 pts below standards Hispanic: 55.7 pts below standards FRL: 58.5 pts below standards SPED: 129.7 pts below standard	<u>Math DFS Growth</u> All Students: 14.4 pt growth English Learners: 9.1pt growth Hispanic: 15.3 pt growth FRL: 14.8 pt growth SPED: 21.2 pt growth
<u>Suspension Rates</u> All Students: 12.1% English Learners: 9.4% Hispanic: 10.5% FRL: 12.7% SPED: 25.8%	<u>Suspension Rates</u> All Students: 2.7% English Learners: 2.3% Hispanic: 2.1% FRL: 2.6% SPED: 7.9%	<u>Suspension Rate Growth</u> All Students: Declined by 9.4% English Learners: Declined by 7.1% Hispanic: Declined by 8.4% FRL: Declined by 10.1% SPED: Declined by 17.9%

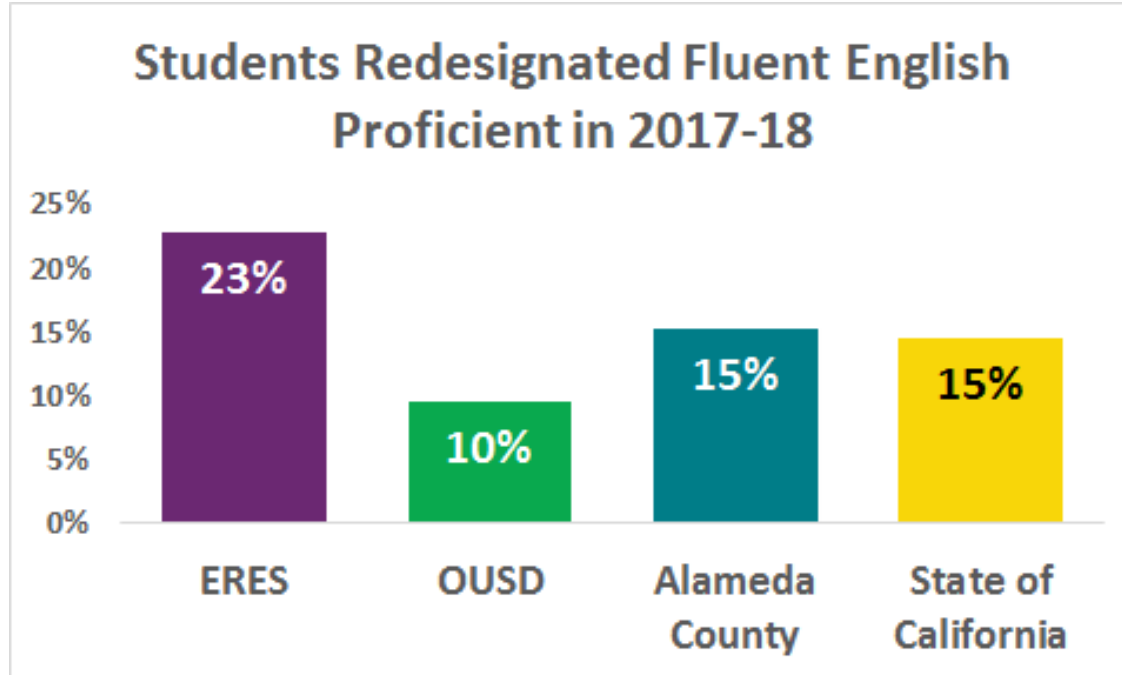
California School Dashboard Outcomes in ELA and Math



California School Dashboard Suspensions



English Learners Developing English Language Proficiency



Aspire Oakland - ERES Enrollment Plan

Enrollment	2021-22	2022-23	2023-24	2024-25	2025-26
TK	-	24	24	24	24
Kindergarten	52	52	52	52	52
1st grade	26	52	52	52	52
2nd grade	26	26	52	52	52
3rd grade	26	26	52	52	52
4th grade	27	27	27	54	54
5th grade	27	27	27	54	54
6th grade	60	60	60	90	60
7th grade	30	60	60	60	90
8th grade	30	30	60	60	60
Total Enrollment	304	384	466	550	550



Aspire ERES provides a higher quality option than nearby schools



Aspire ERES outperforms neighborhood schools in ELA, Math and early literacy. Current waitlist includes 300 students.

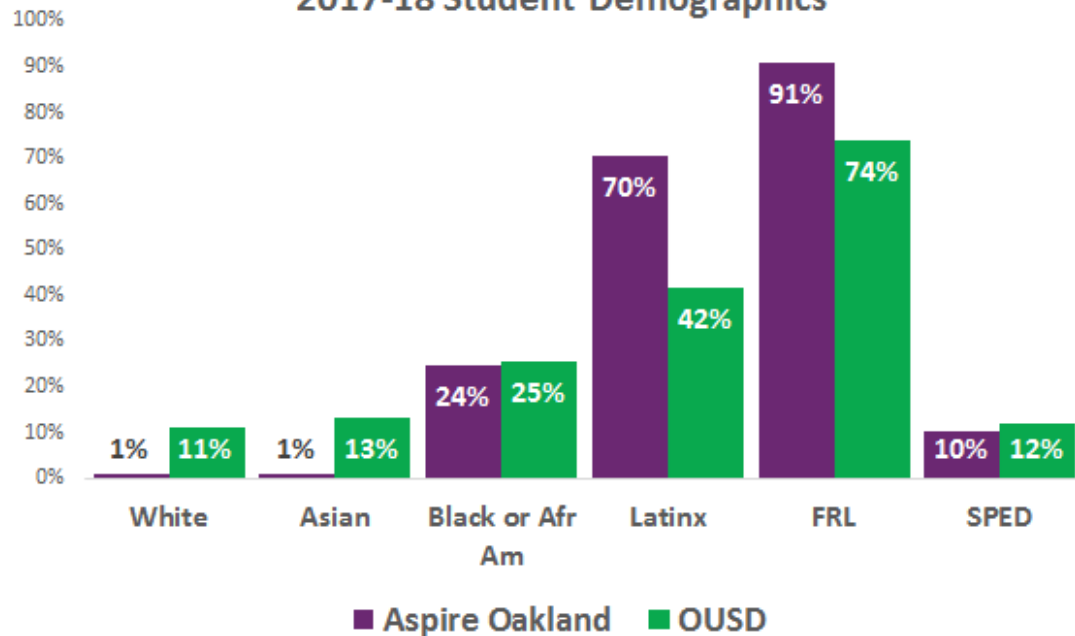
OUR STRONG CULTURE

- ▶ **12/13** Teacher Retention
- ▶ **94%** of families feel a sense of belonging to the school community
- ▶ **Monthly** family meetings & workshops
- ▶ **>85%** of tk-8 students report their teachers hold high expectations & wants them to do their best
- ▶ **Student leadership** opportunities



Aspire Oakland - proud to serve a high needs student community

Aspire Oakland and OUSD
2017-18 Student Demographics



Aspire Oakland schools serve the *same* proportion of African American

Students, *fewer* Asian and White students and *more* Latinx students. 98% are students of color. 91% of Aspire Oakland students qualify for Free/Reduced lunch. 10% of our students qualify for SPED.

Aspire ERES community partnerships:

- Oakland Promise Kinder2College Program
- OUSD Safety Patrol Program
- Primera Iglesia Presbiteriana Hispana
- BARK
- BEAM
- CalSAC
- WeThrive
- Oakland Discovery Center
- GoEnnounce
- Mindful Life Project
- TC Lift
- Bay Area Children's Theater



Supports provided in a pandemic

- \$22,163 = total amount of fiscal support given directly to families experiencing hardships during the pandemic
- 1:1 Chromebook devices & hotspots
- Student Meals served weekly & Revolution Food partnership
- 1:1 mental health check ins for ALL students



Our team, families and scholars are grateful for your support

