



OAKLAND UNIFIED
SCHOOL DISTRICT
Community Schools, Thriving Students

Superintendent Report



iam OUSD

January 27, 2021

Superintendent Report Overview



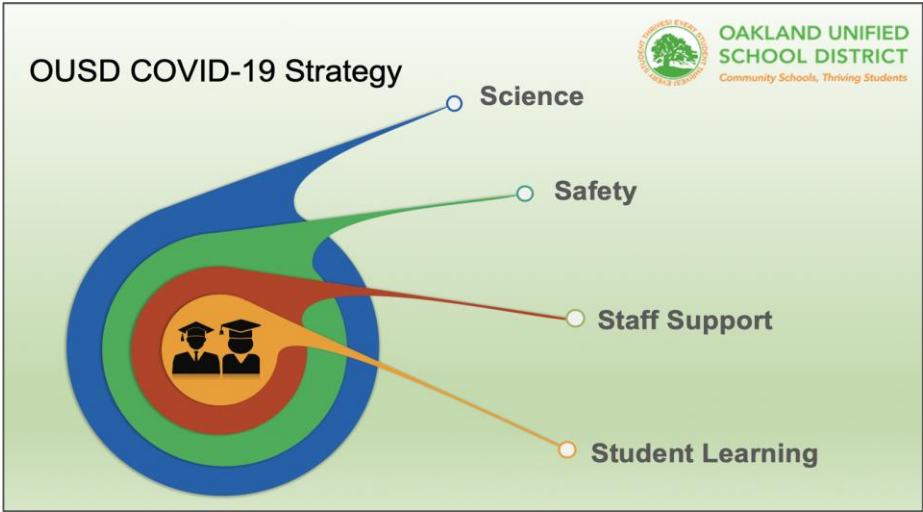
- ❖ Covid Dashboard
- ❖ Attendance Update
- ❖ Learning Hub Updates
- ❖ CARES Act Funding Update
- ❖ Distance Learning Highlights

Mission

Oakland Unified School District (OUSD) will build a Full-Service Community District focused on high academic achievement while serving the whole child, eliminating inequity, and providing each child with excellent teachers, every day.

Vision

All OUSD students will find joy in their academic experience while graduating with the skills to ensure they are caring, competent, fully-informed, critical thinkers who are prepared for college, career, and community success.



State and Alameda County Public Health Guidance

State tier system to guide reopening



Small Cohorts
allowed to open



State allows
reopening schools

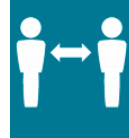


OUSD
recommendation for
reopening

County requirements for reopening



Small and Stable Cohorts

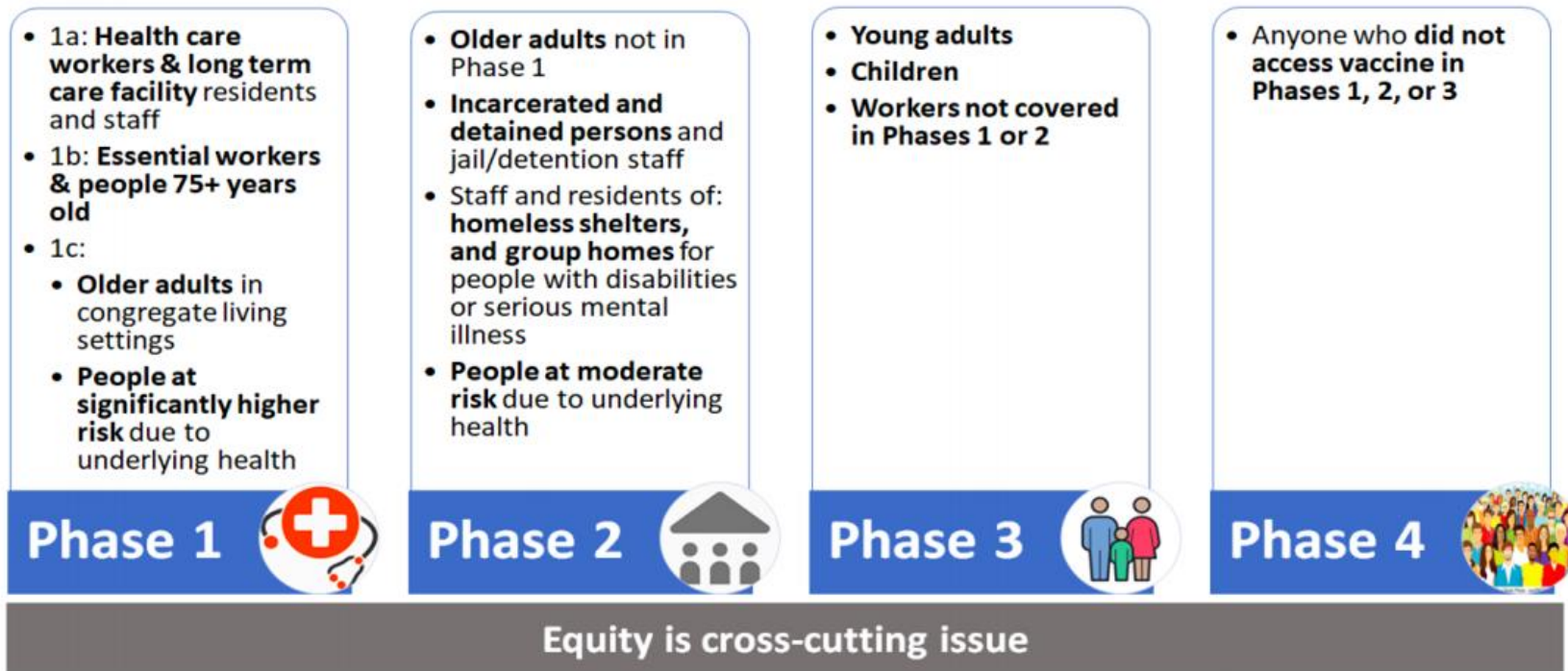
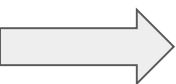


**Physical Distancing &
Daily Symptom Screening**



**Face Coverings for all staff &
students (K-12)**

ACPHD Vaccine Prioritization Framework



Covid Readiness Dashboard

OUSD Safety Measures Progress

The [OUSD Readiness to Return Dashboard](#) reflects the steps we have taken to meet the public health standards from the Alameda County Department of Public Health (ACPHD) and ensure safety for our students and staff.

OUSD Readiness to Return Dashboard



SAFETY (PPE)



CUSTODIAL



STAFF



FACILITIES



ENGAGEMENT/
COMMUNICATION

Progress on Ensuring Clean and Safe Buildings



FACILITY READINESS

Classrooms set up for social distancing standards | 98% 12.30.20
Social distancing marks placed in hallways | 11% 12.30.20
Alameda County safety signs posted at entrances | 100%
Hand sanitizer located at entrances | 100%
Electrostatic sprayers (sanitizing surfaces at active campuses) | 100%
Site based safety plans updated | In progress
Create plans for outdoor learning spaces | Upcoming

Ventilation

Sites assessed for operable windows | 90%
Sites assessed for a forced air system | 100%
Upgrading forced air systems with Merv-16 filters | 51% 1.6.20
Sites will get In-room, HEPA air purifiers | (In progress) by Feb.

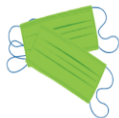


CLEANING PROTOCOLS

Deep cleaning of all classrooms | 100%
Restroom soap dispensers filled & repaired | 100%
Cleaning protocols & procedures created | 100%
Cleaning procedures training provided to custodial staff | 100%
Custodial cleaning schedules set & posted on campuses | 100% 12.30.20

[OUSD Readiness to Return Dashboard](#)

Progress on PPE, Testing, and Vaccinations



SAFETY and Personal Protective Equipment (PPE)

Safety lead identified at each school site | 96%
PPE Inventory sufficient for remainder of school year in warehouse | **100%**
Initial PPE kits delivered to school sites | **100%**
Create Identify Isolation Spaces at sites | In Progress
Plan for safety walkthroughs at sites | Upcoming

[OUSD Readiness to Return Dashboard](#)



STAFF Testing & Screening

Daily health screener (symptom check) established for staff | **100%**
COVID-19 Testing Contract in place for staff | **100%**
Universal entry screening (COVID-19 test) established for staff | **100%**
Employee leave & accommodations process | **100%**
Text/phone-based system pilot of daily health screener | in progress
COVID-19 Testing Protocol provided to staff | in progress
Student covid testing | Waiting for more info
Employee vaccinations | Waiting for more info

Attendance, Learning Hubs & Cares Act Funding

CARES (as submitted January 5, 2021)

Total CRF Allocation	\$ 33,220,006
Total of Previous CRF Expended (Mar 1 - Sept 30, 2020)	\$ 440,808
Total of Previous CRF Expended (Mar 1 - Oct 31, 2020)	\$ 4,667,795
Total Expenditures to include verified Obligations as of Dec 30, 2020)	\$ 28,111,330
Total Unspent CRF Dollars *	\$ 73

On December 20, 2021 Congress extended the CRF spending deadline from December 30, 2020 to December 31, 2021

Attendance Update (Aug 10-Jan 19)

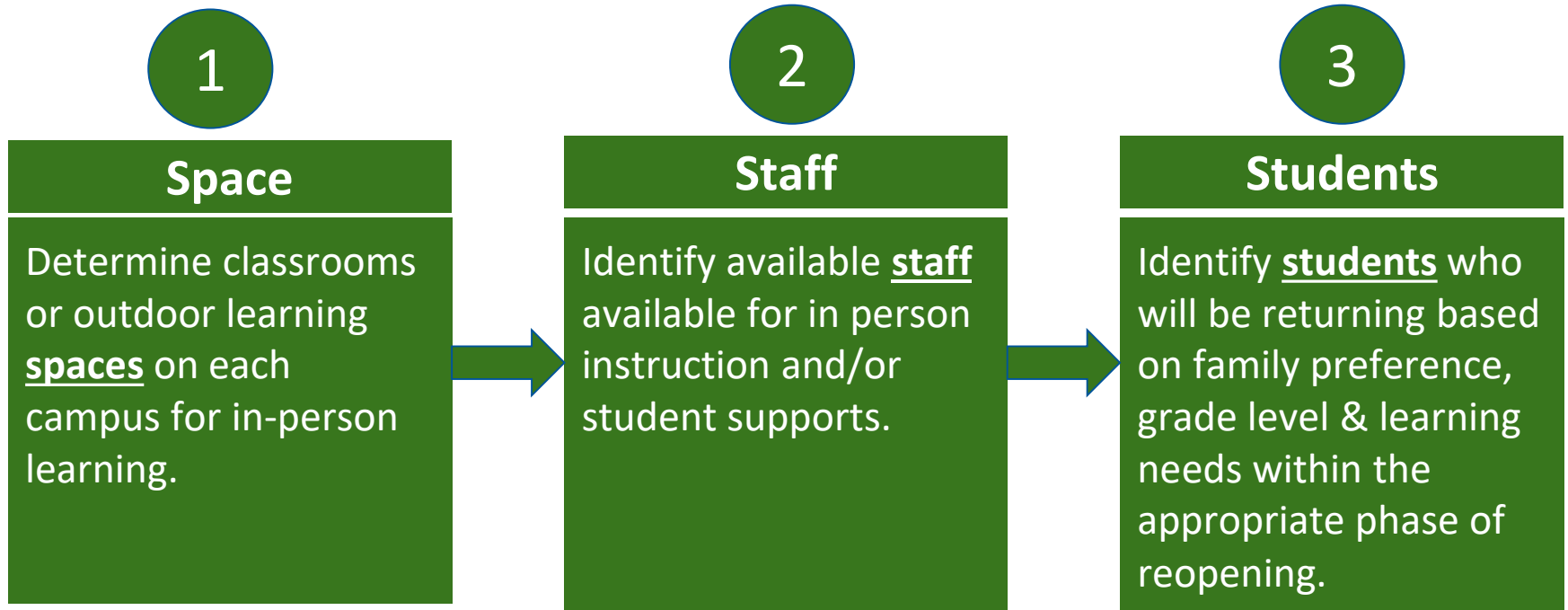
Grade level	All Students	ELL	New-comer	SPED	Unhoused	Foster Youth	African American	Latino	Asian	White
TK-5 (current enrollment)	95% (18494)	95% (6961)	93% (1484)	92% (2466)	83% (196)	87% (77)	90% (3686)	95% (7792)	98% (2366)	99% (2453)
6-8 (current enrollment)	95% (6969)	94% (2029)	94% (417)	92% (1244)	85% (94)	87% (35)	92% (1578)	95% (3334)	97% (700)	99% (691)
9-12 (current enrollment)	87% (9457)	81% (2573)	78% (1018)	84% (1510)	73% (514)	76% (90)	85% (2453)	85% (4297)	95% (1208)	96% (784)

* MetWest and Sojourner Truth NOT included.

Phase 2: In-person learning **hub** pilots

	Citywide Learning Hubs	Special Education Learning Pods	School-based Support hubs
Staff	Non-OUSD Staff	OUSD Staff (Paras) & Non OUSD Staff	After School Staff Classified Staff and Site Administrators
Where?	5 Non-OUSD Sites	8 OUSD Sites	3 OUSD Sites Open <i>2 set to launch this week (10 other sites pending)</i>
Who is being served?	Foster or Unhoused: 100 students by COST referral only	Mod/Severe SpEd: 40 students in attendance; by referral from Special Ed. Office	40 students (can serve up to 25% of students, identified by school sites using Equity Dashboard)
Dates	Started September 21	8-week pilot: Nov-Jan	Started October 26

Process for **potential** hybrid schedules



Distance learning will continue to be an option for all families, in each phase.

Highlighting the Great Work at Schools

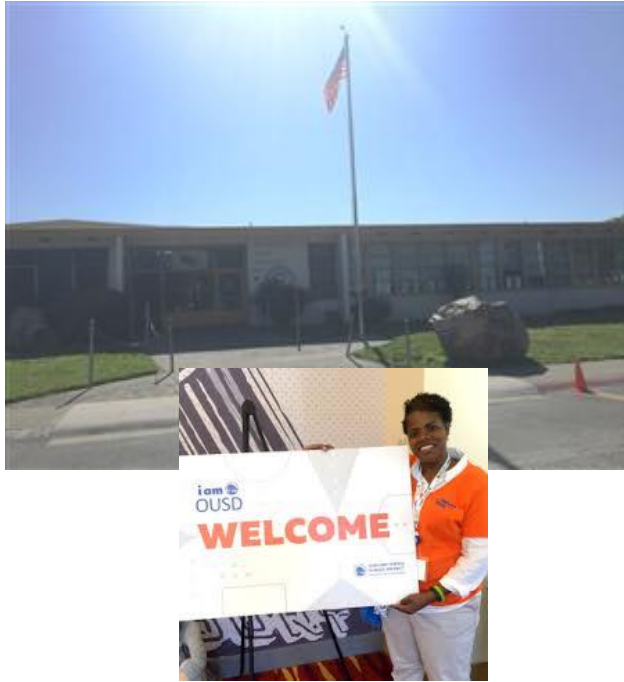
Teacher Practices to Support Student Engagement



MLA TEACHER SYDNEY MORGAN'S CLASS MAKES SCHOOL TOUR VIDEOS TO BUILD LANGUAGE

Eighth grade newcomer ELLs in Sydney Morgan's class at Melrose Leadership Academy recently worked on a culminating unit project where they had to create videos that gave virtual "tours" of their school. The project required students to utilize a variety of language structures and vocabulary across multiple language modalities. After completing the project, several of the students said they enjoyed making introductions and learned more English by creating the videos. We spoke with Ms. Morgan (and her students) over Zoom to find out more about the goals and outcomes of this endeavor. Click on this [link](#) to read more.

School Practices to Connect Families to Vital Resources



MADISON PARK ELEMENTARY IS FOCUSED ON
KEEPING A FOCUS ON JOY IN THIS VIRTUAL
LANDSCAPE.

The school is hosting as many enrichment courses with hands on material as possible. They are also offering family workshops and play dates. They are promoting staying connected and keeping the joy as a Primary Family!

Improving Small Group and 1:1 Supports for Students



ELMHURST UNITED ESTABLISHED
STUDENT SQUADS THAT MEET EVERY
WEDNESDAY TO BUILD COMMUNITY.

Teachers at Elmhurst United have grouped students in squads for community building time on Wednesdays and those same squads gather during work time in classes. With the squads, the students have a trusted group to ask for help and collaborate with. The teachers have seen increase in peer to peer interaction and work completion.



EVERY STUDENT THRIVES!



**OAKLAND UNIFIED
SCHOOL DISTRICT**
Community Schools, Thriving Students

1000 Broadway, Suite 680, Oakland, CA 94607

www.ousd.org



@OUSDnews