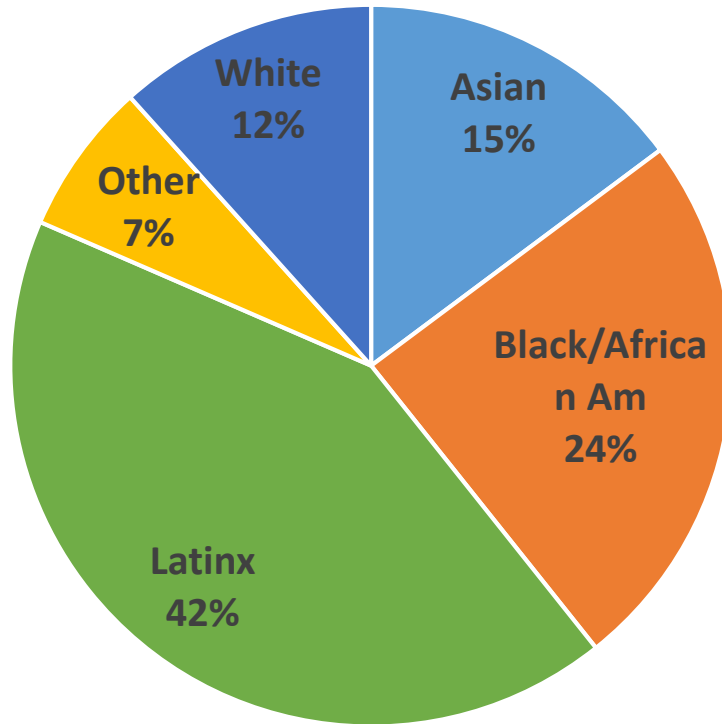


Data Summary

OUSD At a Glance



14% students with disabilities

33% English Learners

74% eligible for Free/Reduced-Price Lunch

How many OUSD schools reflect these citywide demographics?

Looking across all ethnicities,

- 0 schools are within +/- 1 percentage point of the OUSD averages
- 0 schools are within +/- 5 percentage points of the OUSD averages
- 5 schools are within +/- 10 percentage points of the OUSD averages (below)

School Name	# Students	% Asian	% Black	% Latinx	% White	% Other
Skyline High	1592	16%	32%	37%	8%	6%
Allendale Elementary	401	17%	29%	46%	4%	4%
Fruitvale Elementary	332	14%	24%	50%	4%	9%
Manzanita Community	412	15%	27%	49%	2%	7%
Sojourner Truth	166	7%	34%	45%	8%	7%

“Racial Isolation” in OUSD Schools

- “Racial isolation” is often defined as the percentage of a student body that is 90% or more non-white.
- For Oakland, this is not a particularly useful concept.
- The table below shows the counts of schools that are more than a certain threshold of a single ethnicity

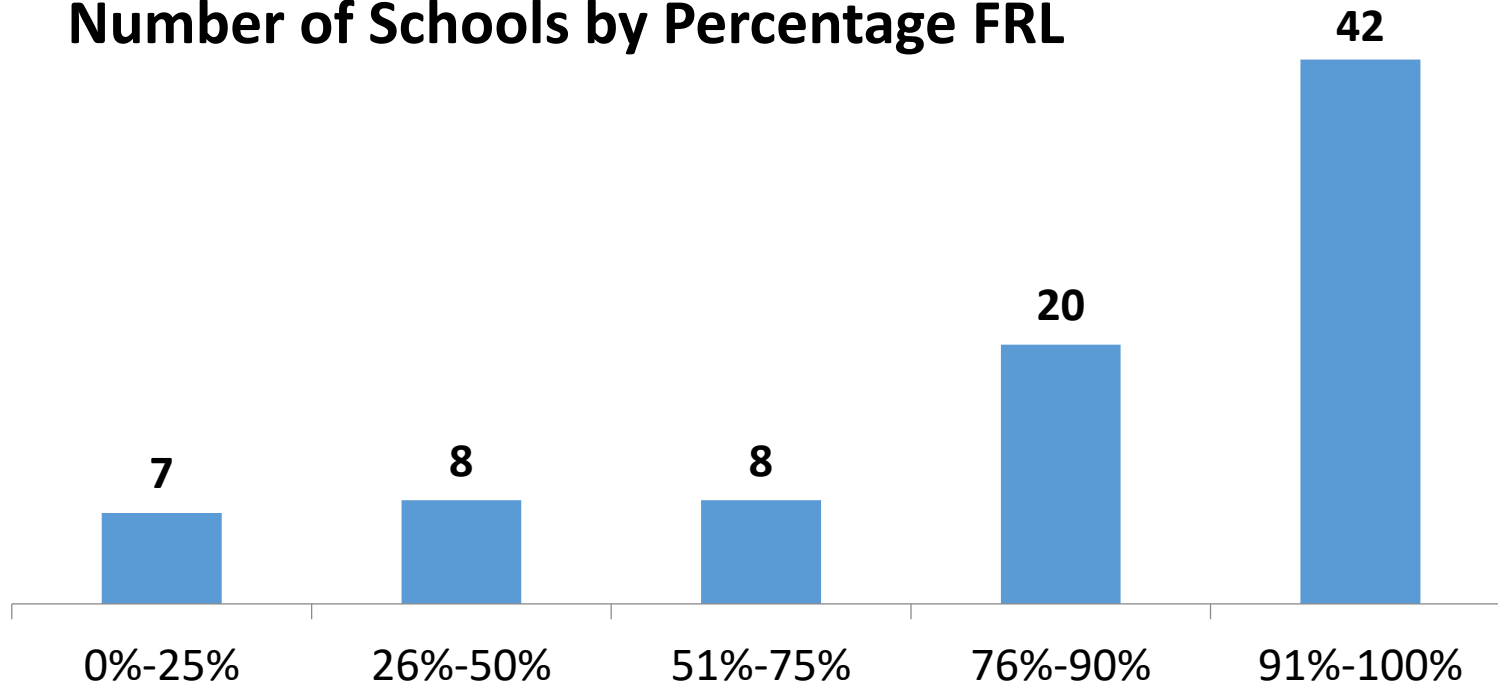
Threshold	# of OUSD Schools
≥50% a single ethnicity	56
≥75% a single ethnicity	15
≥90% a single ethnicity	3

Note: The 3 schools that are 90%+ a single ethnicity are Global Family, Esperanza, and International Community School (all 3 schools are 90%+ Latinx)

Free/Reduced-Price Lunch (FRL) Percentages Across OUSD Schools

- 2 schools are within +/- 1 percentage point of the OUSD average (74%)
- 7 schools are within +/- 5 percentage points of the OUSD average

Number of Schools by Percentage FRL

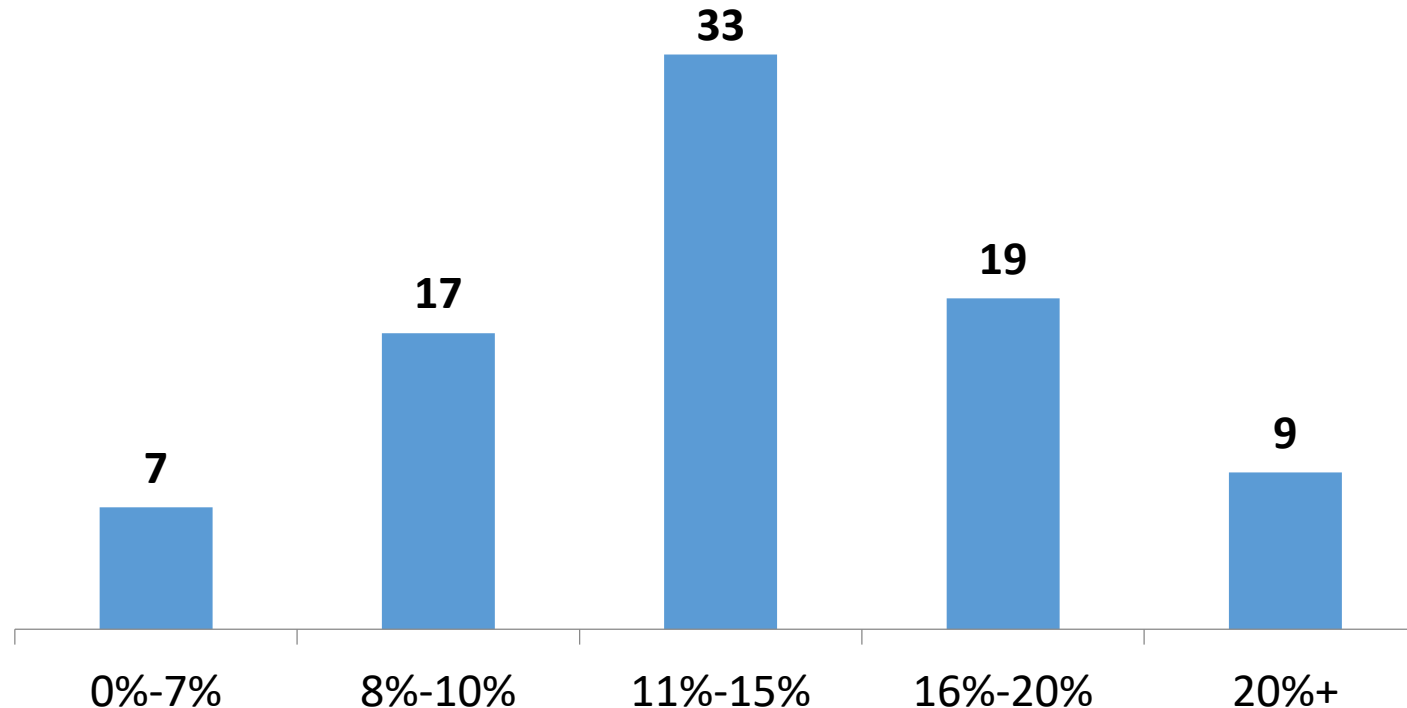


Note: The 2 schools within +/- 1 percentage point of average are Lincoln Elementary, Skyline High

Students with Disabilities (SWD) Percentages Across OUSD Schools

- 19 schools are within +/- 1 percentage point of the OUSD average (14%)
- 52 schools are within +/- 5 percentage points of the OUSD average

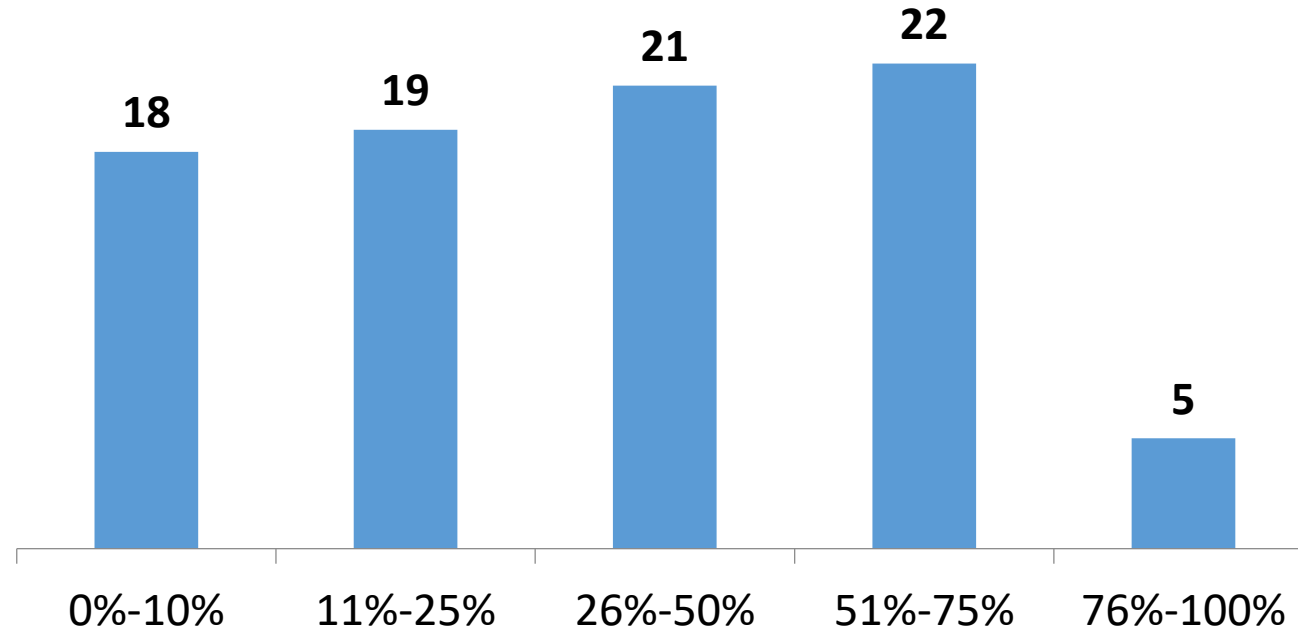
Number of Schools by Percentage of SWD



English Language Learner (EL) Percentages Across OUSD Schools

- 2 schools are within +/- 1 percentage point of the OUSD average (33%)
- 8 schools are within +/- 5 percentage points of the OUSD average

Number of Schools by Percentage of EL

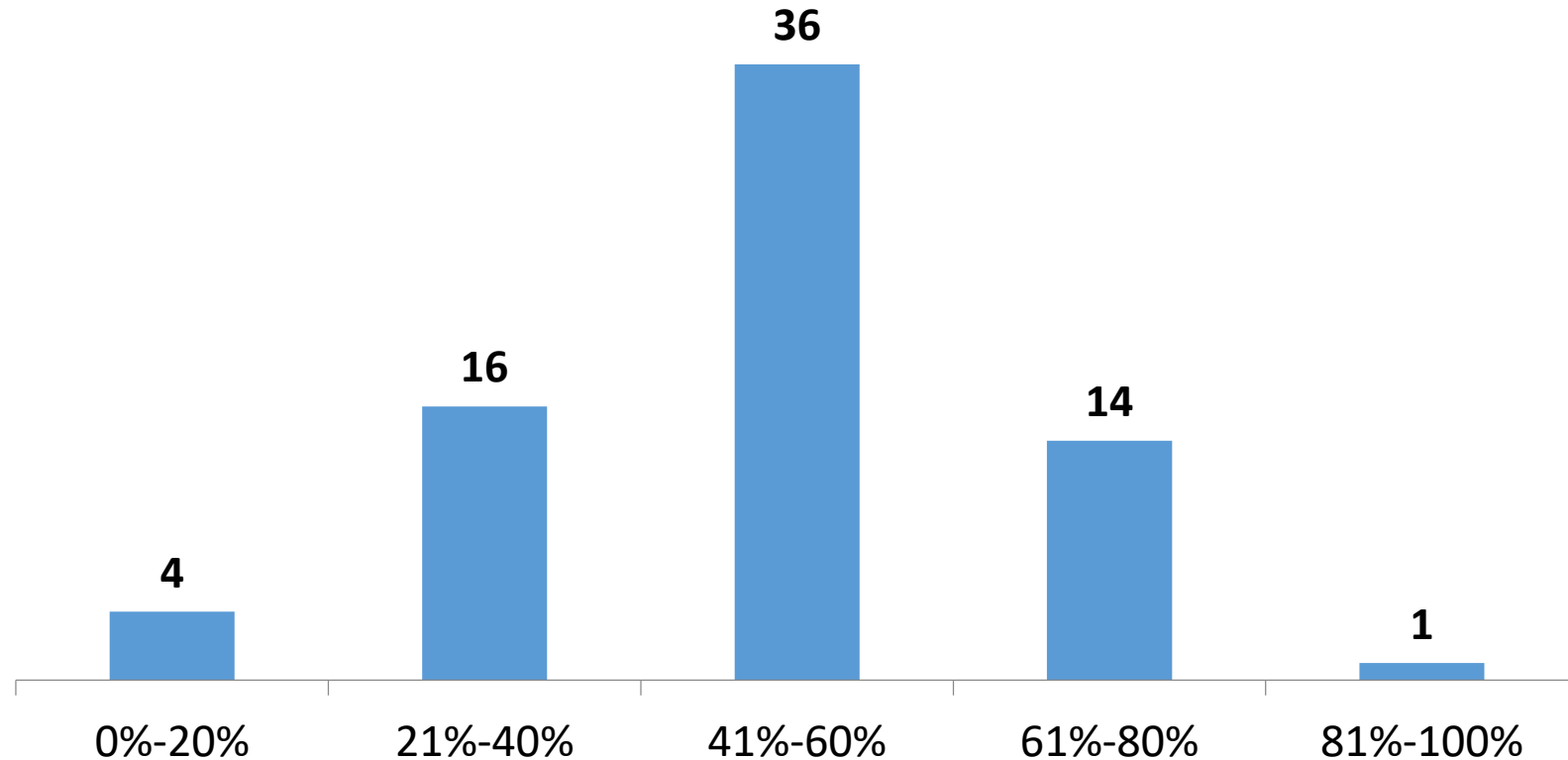


Note: The 2 schools within +/- 1 percentage point of average are Elmhurst and Madison Park 6-12

Do Students Attend Their Neighborhood School?

- ~44% of OUSD students attend their neighborhood school

Number of Schools by Percentage Living in the Neighborhood



Source: OUSD Research and Data Team, Live/Go Data, 2019-20. Excludes schools without an attendance area.