



OAKLAND UNIFIED
SCHOOL DISTRICT

Community Schools, Thriving Students

DRAFT

www.ousd.org/facilities

Produced May 2017



The Center: Central Kitchen and Education Center*



Parker Turf Field Replacement**



New Classroom Building at Glenview Elementary School***



Measures A B & J Independent Citizens' Bond Oversight Committee

2015—2016 Annual Report

- * Project information on page 9
- ** Project information on page 5
- *** Project information on page 10

About Measures A B & J

BOND BACKGROUND

In June 2006, Oakland voters passed **Measure B**, a \$435 million School Facilities Improvement Bond which provided funding to the Oakland Unified School District (OUSD) for educational facilities such as science labs, computer labs, and art and music rooms. The Bond also provided funding for construction, renovation and repair of classrooms, multi-purpose rooms, playgrounds, gymnasiums, Pre-School/Early Childhood Development Centers and student health centers.

In June 2012, Oakland voters passed **Measure J**, a \$475 million School Facilities Improvement Bond, for OUSD to enhance the educational environment for the students and communities of Oakland and better prepare students for college and jobs. Bond funds will be used to upgrade science labs, classrooms, computers and technology; improve student safety and security; repair bathrooms, electrical systems, plumbing and sewer lines; improve energy efficiency; and make seismic upgrades.

This annual report summarizes and highlights the work of the Independent Citizens' Bond Oversight Committee (CBOC) and reviews the expenditures in the Measure B and Measure J School Facilities Improvement Bond for the fiscal year 2015-2016.

BOND PROJECTS

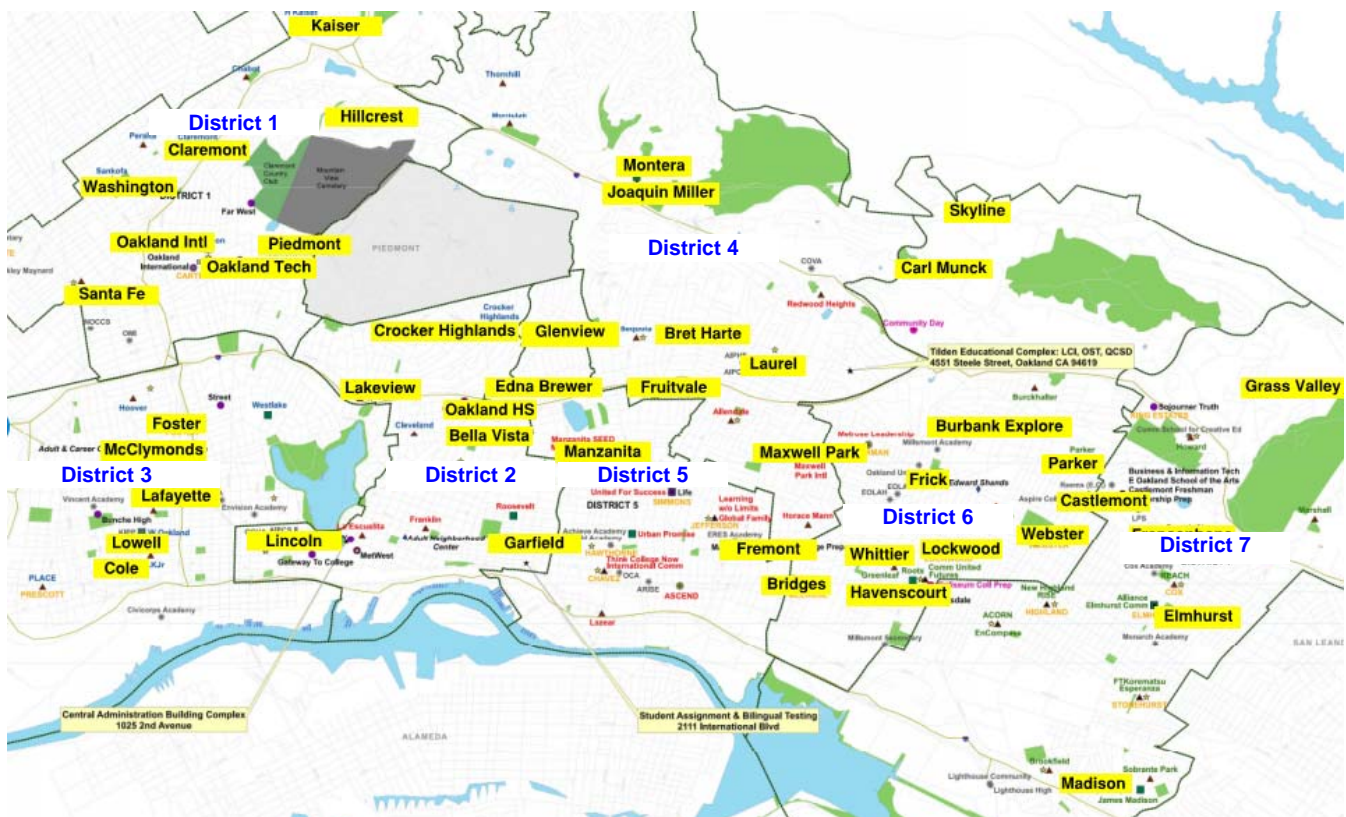
The legal guidelines for spending Measure B and J funds require that OUSD restrict expenditures to those projects described in the Bond Measures' project list.

This report covers these projects, as well as those that are currently being funded through the remaining funds of unissued bonds of \$65 million in Measure B.

BOND PROGRAM ADMINISTRATION

Timothy White, Deputy Chief of Facilities Planning & Management for 14 years, left OUSD in February 2015. In February 2015, the District named Lance Jackson, Chief Operating Officer of Seville Group, Inc. (SGI), as Interim Deputy Chief. Roland Broach, Executive Director of Buildings & Grounds and Custodial, then filled this role starting February 2016. In April 2016, Joe Dominguez, Chief Deputy Superintendent of Inglewood Unified School District, was selected as the new Deputy Chief.

PROJECT DISTRIBUTION ACROSS THE DISTRICT—FISCAL YEAR 2015-2016



CBOC Roles & Activities

PURPOSE AND DUTIES OF THE CBOC

As required by Education Code Section 15278, the District appointed a Committee of local residents, whose main charge is to inform the public about how the Bond money is being spent. The Committee actively reviews and reports on the expenditure of taxpayer money for school construction to ensure that bond funds are spent in accordance with the provisions of the Bond. The Committee is comprised of up to 9 appointees, including a Chairperson, Vice Chairperson and Secretary.

Committee Members for the 2015-2016 Fiscal Year

Chair	Ariel Bierbaum
Vice Chair	Andrea Dawson
Member	Cesar Escalante
Member	Gerald Green
Member	Chanu Lee
Member	Joyce Nilo
Member	Renee Swayne
Member	Shiree Teng
Member	Ferrah Wilder
Secretary	Vacant

"Imagine being able to learn in a school that has the facilities that are the most conducive to learning... that is what I want to see for every student in Oakland no matter where they live. The built environment is a key factor in student motivation and success, and the overall school climate. I have been pleased with the wonderful work that OUSD Facilities staff have been doing to upgrade and modernize many of the schools. Yet, we still have a lot more work to do to make sure every dollar is spent according to taxpayers' intent."

Please provide
new CBOC quote.

- Shiree Teng, CBOC Member

CBOC ACTIVITIES

The Committee convened and participated in a number of key activities such as preparing the Annual Report, reviewing program expenditures, and visiting project sites to observe construction progress. The Committee expresses its deep appreciation for the efforts and contributions of the OUSD Facilities Department – in particular, David Colbert, in preparing and producing this Annual Report.

Following is a list of Project Site Visits for 2015-2016 Fiscal Year:

October 2, 2015

Greenleaf ES at Whittier Expansion
Skyline HS Field

November 6, 2015

Oakland International HS Field
Fruitvale ES Bleachers

December 4, 2015

Claremont MS Kitchen & Cafeteria
Elmhurst MS Restroom & Paving

February 5, 2016

Coliseum College Prep Science Classrooms
Castlemont HS Intensive Support Site

March 4, 2016

Oakland Technical HS Health Clinic
Edna Brewer MS Field

April 1, 2016

Sankofa Academy Expansion
Foster ES Central Kitchen

May 6, 2016

Madison Park Upper Campus Expansion
McClymonds HS Intensive Support Site

June 3, 2016

Greenleaf ES at Whittier Expansion
Glenview ES Modernization & New Construction

Note:

CDC = Child Development Center
ES = Elementary School
MS = Middle School
HS = High School

Measures A B & J Dollars at Work

2015-2016 LOCAL BUSINESS UTILIZATION

In January 2014, the Board of Education amended the Local Business Program to increase the Local Business Utilization (LBU) requirement on the Capital Program from 20% to 50% on all contracts. Since then, the program's LBU has seen an increase. As of December 2016, the Capital Program reached a overall 41% LBU with a projected of 59% LBU at project completion. As of March 2016, the Capital Program has maintained an overall 50% LBU. Out of the \$382M spent, a projection of \$210M has been reinvested back to Oakland through a 55% utilization of Oakland businesses on District projects. With this increasing trend, the City of Oakland has experienced a 35% increase in number of certified Small Local Resident Business Enterprises (SLRBE) for the year of 2016.

"A recent example of the success of the LBU program is the Greenleaf Academy at Whittier Phase 1 New Construction Project. The construction portion of the work was approximately \$5.3M; the LBU on this project was 61% with over \$3.3M awarded to local businesses, including both Joint Venture partners on the project." - **Shonnell Frost-Gibbs, 360 Total Concepts, Inc.**

SUSTAINABILITY AND CHPS

The District's robust green building sustainability initiative requires that all design and construction projects meet its High Performance Schools Guidelines. There is a focus on natural daylight, energy and water conservation, resource efficiency, and superior indoor environmental quality, among other sustainable attributes. The Bond Program utilizes the latest CHPS (Collaborative for High Performance Schools) Criteria (currently CA-CHPS v.2014) in all elements of design and construction of Modernization and New Building projects. See page 8 for upcoming sustainability projects.

DISTRICT VISION, GOAL & PRIORITIES

The Vision

OUSD's vision is to support academic achievements and re-establish schools as centers of the community by transforming OUSD into a Full-service Community School District. In this model, high quality instruction, health and physical education, nutrition, medical, dental, recreation, housing, employment and language instruction are all provided at the school, which becomes the hub of community activity. The emphasis is on educating and caring for the whole child. Social and human services are not seen as extras or add-ons in these schools. Instead, collaboration centered on the well-being of children and families drive all programs at these schools.

The Goal

OUSD's goal is to build a Full-Service Community School District that cares for the whole child, eliminates inequity and provides all students with excellent teachers every day.

The Priorities

OUSD's priorities are: Safe, healthy and supportive schools; high quality, effective instruction; and college and career readiness.

Building a Better Community

COMPLETED PROJECT HIGHLIGHTS

BURBANK SCHOOLYARD (Funded by Measure J)

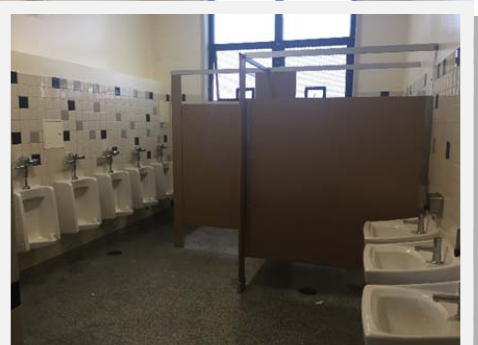
Expanding from a paving project, major accessibility and site improvements were made at the Burbank Preschool campus in 2016. Major site improvements included the replacement of asphalt paving, installation of a landscaped planter island within the bus dropoff/pickup area, a new synthetic turf play area, new fencing, installation of shade umbrellas, and a bioswale to collect and filter runoff. In addition, a new delivery gate was installed on 65th Avenue to allow students to be off-loaded on site at 64th Place. Accessibility improvements included upgrades to interior doors and restrooms, paving with accessible path of travel, the addition of parking signage for van accessible HDGP parking, and the remodeling of boys, girls and staff restrooms for ADA compliance.



Burbank Schoolyard & Accessibility Improvements

RESTROOM RENOVATIONS (Funded by Measure J)

In 2016, restroom renovations were done at the East Oakland Pride at Webster Elementary, Fruitvale Elementary, Lockwood Elementary, Maxwell Park Elementary, and Parker Elementary schools. Scope of the restroom renovation projects included abatement of hazardous materials, installation of new plumbing fixtures, replacement of toilet accessories, new electrical hand dryers, replacement of toilet partitions, replacement of existing flooring with new terrazzo, replacement of existing exhaust fans, installation of new signage, new decorative ceramic tile, and the repainting of walls, ceilings, doors and trim.



Lockwood Restroom Renovation

FRICK ISS PHASE 1 (Funded by Measure J)

Started from an 8 room school building in 1907, Frick Impact Academy now serves students from grade levels 6 through 12. Thus, the site was chosen as a candidate for a three-phase improvement of the campus. In 2016, Phase 1, which included painting the interiors and exteriors of selected buildings, the installation of new cabinets and furniture in specific classrooms, and demolition of portables on campus was completed in preparation for Phases 2 and 3 in 2017.



Frick ISS Phase 1

TURF FIELD INSTALLATIONS (Funded by Measure J)

Moving toward having synthetic turf fields at sites District wide, grass fields at many schools have been replaced, as turf saves many gallons of water and requires little maintenance. Turf fields were installed at the Edna Brewer Middle School, Elmhurst Middle School and Parker Elementary School campuses. Installation of these new turf fields included extensions of existing irrigation, installation of draining pads and concrete bands. At the Parker campus, the scope extended to include the relocation of the existing basketball court, asphalt paving of a new pathway, replacement of the existing play yard, and the installation of concrete seat walls for an outdoor assembly area. Students also participated by decorating tiles to be placed on the seat walls.



Parker Turf Field Replacement

Building a Better Community

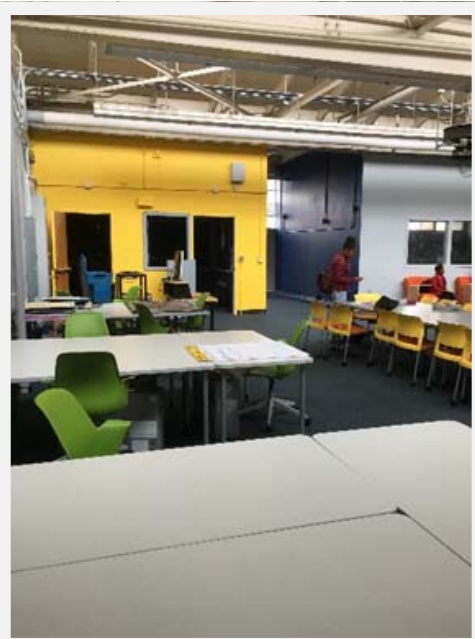
COMPLETED PROJECT HIGHLIGHTS

MCCLYMONDS HIGH SCHOOL ISS PHASE 1 (Funded by Measure J)

Built in 1915, the McClymonds campus was chosen for a two-phase improvement project. Working with members of the school community, Phase 1 commenced in 2016 with the following improvements to the site:

- Installation of new parking lot light fixtures for improved site safety
- Wiring for new electronic marquee sign
- Installation of wireless internet connectivity for the gymnasium and outdoor amphitheater
- Installation of flooring with embedded MACK logo at the main office
- Installation of new outdoor tables

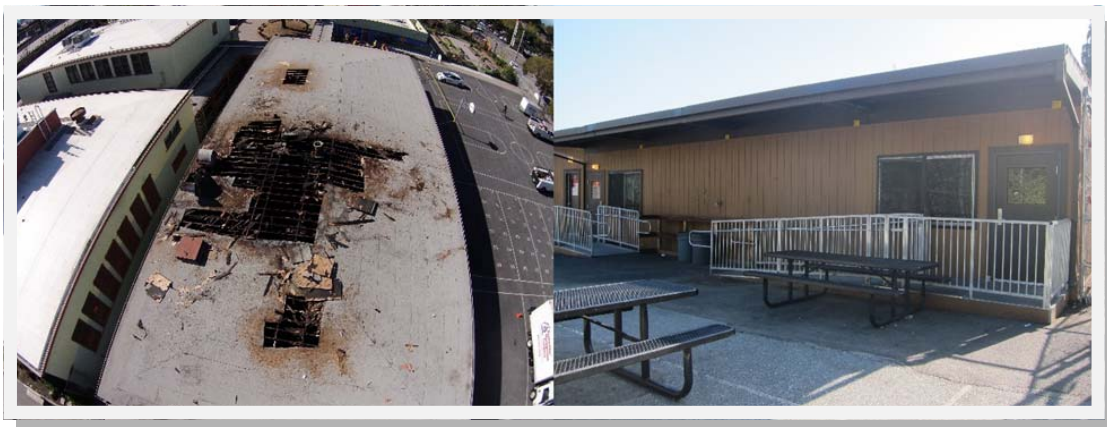
New light fixtures in the parking lot improved visibility and safety during early and late hours, creating a brighter outdoor environment for students and staff.



McClymonds ISS Phase 1

CLAREMONT FIRE REPAIR (Funded by Risk Management)

The existing cafeteria at Claremont Middle School was damaged by a fire in February 2015. Working with limited space, a new interim cafetorium with HCD commercial kitchen was built adjacent to the existing gym building to accommodate the school's intent to enroll 100 more students in the coming years. Project scope included new asphalt paving, the installation of new utilities to the cafetorium, fire protection and new fencing. New water, sewer, electrical, data, intercom, fire alarm, intrusion alarm, PA and bell systems service the new cafetorium.



Claremont Before (Left) and After (Right) Fire Repair

Building a Better Community

COMPLETED PROJECTS

Project Name	Budget	Percentage of Total Spending
District 1		
Oakland International HS California Solar Initiative (CSI)	\$988,466	
Oakland Tech HS CSI	\$3,195,170	
Sankofa ES CSI	\$436,208	
DISTRICT 1 TOTAL:	\$4,619,844	10.85%
District 2		
Oakland HS CSI	\$2,842,400	
DISTRICT 2 TOTAL:	\$2,842,400	6.68%
District 3		
Lowell MS CSI		
McClymonds HS CSI		
Westlake MS CSI		
		10.05%
District 4		
Bret Hart MS CSI		
Montera MS CSI		
Thornhill Roofing		
		8.23%
District 5		
900/955 High St P		
Edna Brewer MS		
Fremont Portable		
Melrose Roofing		
Roosevelt MS CSI		
		12.88%
District 6		
Havenscourt MS CSI	\$1,059,351	
Skyline HS CSI	\$3,456,313	
DISTRICT 6 TOTAL:	\$4,515,664	10.61%
District 7		
Castlemont HS CSI	\$2,413,642	
Elmhurst MS Paving	\$1,494,461	
King Estates MS CSI	\$598,447	
Madison MS CSI	\$1,220,720	
Rudsdale Roofing	\$246,245	
DISTRICT 7 TOTAL:	\$5,973,515	14.03%
Various Districts		
California Solar Initiative (CSI) Project	\$8,850,652	
Technology Infrastructure Upgrades	\$2,500,000	
VARIOUS DISTRICTS TOTAL:	\$11,350,652	26.66%
TOTAL:	\$42,570,413	100.00%

CONTENT TO BE
UPDATED PER 2015
-2016 DATA

Building a Better Community

FEATURED SUSTAINABILITY PROJECTS

Proposition 39 California Clean Energy Jobs Act Energy Efficiency Project (Funding by Measure J & Fund 40)

We completed a baseline plan from the audit/benchmarking under the 1-2 year cycle. This baseline provided the district with incentives or project types that fall within the parameter of the proposition 39 guidelines. We currently have a request for qualification for year 3-5 in anticipation of the new funding cycle. The intent of the proposal is to have a deeper understanding of the district's energy savings/efficiency needs. These needs will incorporate projects under the capital program and long term system needs (systems such as boilers, mechanical units and lighting) of buildings and grounds.

The following projects were developed in association with Building & Ground's needs and energy audit/benchmarking plan. They represent projects funded under the year 1 and 2 cycle.

Summer 2015 Construction

- Howard Elementary Lighting Upgrade
- Kaiser Elementary Lighting Upgrade
- Peralta Elementary Lighting Upgrade

Summer 2016 Construction

- Bret Harte Middle Lighting Upgrade
- Manzanita Community HVAC Upgrade
- Montera Middle Lighting Upgrade
- Madison Park Academy Lighting Upgrade
- Oakland High Lighting Upgrade
- Oakland International High HVAC Upgrade
- Oakland Technical High Lighting Upgrade

Building a Better Community

FEATURED PROJECTS IN DESIGN

The Center: Central Kitchen and Education Center (Funded by Measure J)

'The Center' will feature:

- 40,000 sq. ft Central Kitchen designed to prepare 35,000 fresh student meals daily. Space will include facilities for receiving and shipping, storage, food-preparation bulk staging, equipment washing, waste treatment, and training and education, as well as 10,000 sq. ft of administrative space
- 5,000 sq. ft Education Center housing a teaching kitchen and culinary classrooms that will support Linked Learning career pathways in agriculture, culinary arts, botany, and related fields for kids in grades K-12, and add a new branch to West Oakland's Science, Technology, Engineering, and Math (STEM) Corridor



The Center CAD Rendering

Madison Park Business & Art Academy Expansion (Funded by Measure J and Fund 35)

The new 30,464 square foot classroom building will feature:

- 14 classrooms equipped with new classroom furniture selected to best serve student and teacher needs
- 2 science laboratories featuring demonstration tables for experimental work and investigation and gas for more robust experimentation
- 4 student restrooms will feature low water flow fixtures; rain water will also be captured, stored, and filtered into plumbing system and will be used for flushing toilets
- 6 administrative offices and increased staff work space, including a break room, conference room, work room and staff restrooms
- Exterior assembly area for student activities, such as student body candidate election speech, performance, and outdoor learning, featuring concrete seating and power outlets



Madison Park CAD Rendering

Building a Better Community

FEATURED PROJECTS IN DESIGN

Glenview Elementary New Construction Project (Funded by Measure J)

The Glenview Elementary School New Construction project scope replaces the existing structures with a new two-story building. The new classroom building will feature:

- Existing main entry and accompanying façade, yard in front of main entry will be repaved
- New handicap accessible (ADA) stair lift by stairs will provide accessibility from street level to the main entry doorway
- 21 classrooms equipped with new furniture selected to best serve student and teacher needs
- Infrastructure for educational technology tools installed in classroom ceilings to provide easy and safe access
- New Multipurpose room with new stage, storage under stage for chairs, folding cafeteria tables, and striping for basketball for indoor physical education
- Administrative offices
- Modern and efficient plumbing, electric HVAC, and WiFi systems



Existing Glenview Elementary Front Entrance Façade

Castlemont High School ISS Phase 1 (Funded by Measure J)

Phase 1 of the Castlemont Intensive Support Site project will feature:

- Opened in January 2015, the Fabrication Laboratory offers students a hands-on learning environment for learning the principles of design, engineering and manufacturing. Phase 1 of the project will work to increase the electrical capacity of the laboratory for better utilization of equipment for students.
- Housed in an adjacent area is a hydroponic garden and farm utilized by students to experiment with growing plants without soil by submerging plant roots in water with mineral nutrient solutions. Phase 1 of the project will provide additional water and drainage for the space.
- Remodeling of the existing library
- The addition of seating and painting in the central courtyard
- Upgrades to the weight room



Existing Castlemont Sustainable Urban Design Academy

Building a Better Community

FEATURED PROJECTS IN DESIGN

Turf Field Projects (Funded by Measure J)

As part of the District's effort toward utilizing synthetic turf District-wide, new synthetic turf fields will be installed at the following campuses:

- Bret Harte Middle School
- Claremont Middle School
- Frick Middle School
- Oakland Technical High School

These fields will save many gallons of water and require little maintenance compared to grass fields.



Frick Academy Turf Field

CCPA at Havenscourt Science Classroom & Labs (Funded by Measure J)

Located on the Coliseum College Prep Academy at Havenscourt campus, the scope of this project consists of the conversion of an existing classroom to a chemistry lab. The new chemistry lab will feature:

- 8 student workstations, each with gas, sink and electrical service
- A teacher workstation with sink
- New cabinets and new chemical resistance countertops
- Safety shower and an acid neutralization tank



Existing Havenscourt Science Classroom

Building a Better Community

FEATURED PROJECTS IN DESIGN

Claremont New Kitchen & Cafeteria (Funded by Measure J)

This project originated after a fire burned out the existing Claremont Middle School cafeteria in February 2015. The reconstruction of the cafeteria was an opportunity for the school to envision further campus improvements. The proposed scope of this project includes:

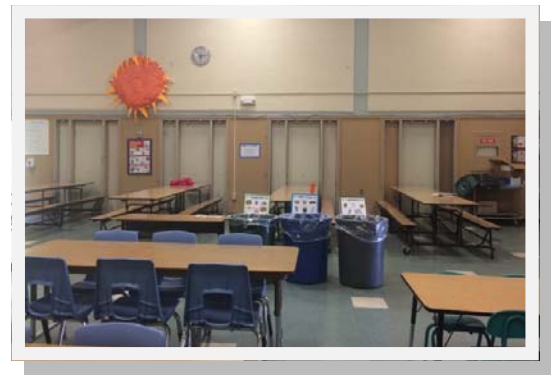
- A new multipurpose building to house the functions of the kitchen, cafeteria, stage and performance space as well as an athletic court
- Renovations in Building C to accommodate three SDC classrooms with accessible compliant path of travel and compliant restrooms
- Evaluation and proposed modifications to the existing fire alarm detection within Building C
- Site work, which will include the demolition of the existing cafeteria, removal of existing portables and landscaping reorganization



Existing Claremont Interim Kitchen

Finishing Kitchens at Hillcrest, Kaiser, Laurel, & Piedmont (Funded by Measure J)

As part of the Rethinking School Lunch in Oakland initiative, the finishing kitchens are designed to prepare meals from bulk ingredients delivered by the new Central Kitchen. Currently each existing kitchen serves pre-packaged hot food delivered to the school. This new design will allow students the opportunity to have fresh prepared meals onsite. Each finishing kitchen at each site includes a fully equipped kitchen containing a servicing line, dry goods storage, tray wash area, food preparation area, staff restroom and custodial closet. Hot food will be prepared and served in the new kitchen and includes a full-service salad bar, fresh fruit, milk coolers and a hydration station.



Existing Kaiser Multi-Purpose Room

Audit Review and Findings

ANNUAL EXPENDITURE REVIEW

Of all the activities undertaken by the CBOC, its primary duty is to review and ensure that the Measure B and J funds are spent in accordance with the Bond language. The chart at the end of this report reflects a summary of project expenditures for the Fiscal Year ended June 30, 2016. The report is organized to reflect the life of each project commencing with the Pre-Design Phase and concluding with the Completed Phase. The cumulative expenditures for the Measure B and J bond program totaled \$428,932,766 through June 30, 2016.

CONTENT TO BE UPDATED PER 2015-2016 DATA

There were no bond Issuances for the 2014/2015 Fiscal Year.

FINANCIAL AND PERFORMANCE AUDIT

As required by Measures B and J, each fiscal year a financial and performance audit of Measures B and J expenditures is conducted. Yano Accountancy Corporation conducted the financial and performance audits of Measures B and J revenues and expenditures for the year ending June 30, 2016.

The financial audit included a review of the financial schedule presented by the District. The financial audit was concluded with no findings. Please see links below for the 2015/2016 financial and performance audit. The performance audit evaluated the District's compliance in ensuring all proceeds were spent on bond-approved projects and implemented internal controls (set criteria/standards for project expenditure).

- [2014/2015 Measures "B & J" Financial and Performance Audit Report for the Fiscal Year Ending June 30, 2015](#)

CONTENT TO BE UPDATED PER 2015-2016 DATA

CBOC STATEMENT OF COMPLIANCE

The 2015/2016 Measures B & J Annual Report is submitted to the Board of Education by the Committee, in accordance with the Education Code section 15278 (b). The Committee advises that, to the best of its knowledge based on available information provided by the District, OUSD is in compliance with the requirements of Article XXIIA, Section 1(b)(3) of the California Constitution. Specifically, the performance and financial audits were conducted and included a list of bond-approved projects. There were no findings disputing the requirements that all bond proceeds be used on bond-approved projects and that bond proceeds are not be used to pay administrator salaries.

Measure B Expenditures

Project Number	Detailed Status	Site	Project	FY 14/15 Expenses
7127	Design	Allendale	Allendale Fire Alarm Replacement	57,826
13143	Design	Edna Brewer	Fire and Intrusion Alarm Replacement	33,200
7121	Design	Far West High School	Fire and Intrusion Alarm Replacement	29,595
13105	Design	Foster Elementary	Central Commissary	28,522
13132	Design	Grass Valley CDC	Fire and Intrusion Alarm Replacement	9,876
7120	Design	Joaquin Miller	Fire and Intrusion Alarm Replacement	34,580
12109	Design	Laurel Elementary	Intrusion Alarm	11,988
	Design Total			205,588
7125	Construction	Bella Vista Elementary	Fire and Intrusion Alarm Replacement	116,957
7122	Construction	Lafayette Elementary	Fire and Intrusion Alarm Replacement	229,632
7123	Construction	Piedmont Avenue Elem	Fire and Intrusion Alarm Replacement	265,809
	Const			612,398
7024	Compl			24,331
13142	Compl			12,225
7140	Compl			415,944
3049.4B	Compl			201
7047	Compl			2,102,450
13118	Compl			12,933
7030	Compl			31,321
6009	Compl			14,744
12101	Compl			13,459
6004	Compl			60,719
13102	Compl			120,740
13121	Compl			339,995
12104	Compl			1,710,485
3044	Compl			17,668
7050	Compl			496,536
3034	Compl			6,683
12102	Compl			3,489
12103	Compl			2,984
13146	Completed	Oakland Tech	Scarfolding	37,178
7145	Completed	Piedmont	Portable Library	1,600
6010	Completed	Prescott Small Schools	Small Schools (PLACE)	1,736
13104	Completed	Ralph Bunche	Portables	13,812
13101	Completed	Washington Small Schools	Interim Housing	9,882
13120	Completed	Washington Small Schools	Interim Housing II	237,066
6012	Completed	Washington Small Schools	Small Schools (Sankofa)	50,174
13103	Completed	Whittier	Interim Housing	12,190
13103	Completed	Whittier	Interim Housing II	162,767
	Completed Total			5,913,310
N/A	N/A	District Staff Salaries	N/A	53,530
N/A	N/A	Consultant & Professional Services	N/A	356,496
	Total Other Expenditures			410,026
TOTAL				7,141,322

CONTENT TO BE
UPDATED PER 2015
-2016 DATA

Measure J Expenditures

Project Number	Detailed Status	Site	Project	FY 14/15 Expenses
13158	Pre Design	Fremont HS	Replacement	75,569
13175	Pre Design	Hillcrest ES	Finishing Kitchen	92,245
13177	Pre Design	Kaiser ES	Finishing Kitchen	88,504
13179	Pre Design	Laurel ES	Finishing Kitchen	98,255
13201	Pre Design	Manzanita (SEED)	Play Area Improvement	6,600
13184	Pre Design	Piedmont Ave ES	Finishing Kitchen	78,197
Pre Design Total				439,369
13195	Design	Parker ES	Astro Turf Installation	29,635
13133	Design	Foster ES	Central Commissary	3,813,535
13124	Design	Madison MS	Expansion Project	654,119
13125	Design	Washington ES	Expansion Project	36,356
13134	Design			989,224
13140	Design			59,506
13189	Design			96,710
13194	Design			86,013
13136	Design			132,933
Design Total				5,898,031
13196	Construction			376,484
13126	Construction			3,445,215
13135	Construction			881,920
13199	Construction			80,917
13148	Construction			368,925
13147	Construction			880,599
13191	Construction			60,943
13128	Construction			18,061,414
13130	Construction			1,295,490
13160	Construction			132,751
13190	Construction			127,141
13141	Construction	Sobrante Park ES	Restroom Renovation	38,350
N/A	Construction	Tech Common Core	Technology Infrastructure	2,495,705
N/A	Construction	Tech E-Rate	Technology Projects	1,917,965
13154	Construction	Oakland International HS	Turf Replacement	374,130
13197	Construction	Skyline HS	Turf Replacement	238,532
Construction Total				30,776,482
13151	Completed	Melrose ES	Roofing Project	169,593
13153	Completed	Rudsdale ES	Roofing Project	213,142
13152	Completed	Thornhill ES	Roofing Project	270,859
Completed Totals				653,594
N/A	N/A	District Staff Salaries	N/A	2,339,447
N/A	N/A	Consultant Expense	N/A	6,725,345
Total Other Expenditures				9,064,792
Total				46,832,268

CONTENT TO BE
UPDATED PER 2015
-2016 DATA