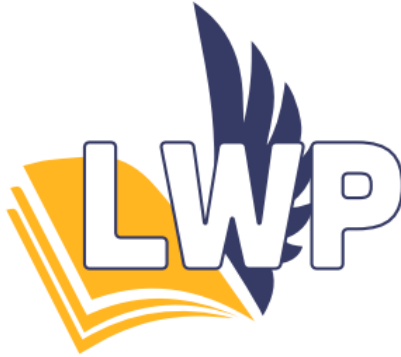


Measure N School Site Visit Lionel Wilson Prep



February 21, 2017

School Vision

*All students should thrive and **graduate critically literate** and free to choose their college, career, and life pathway.*



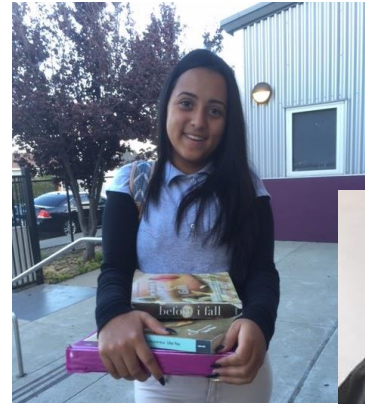
Theory of Action

LWP will take a three pronged approach to meeting our goals:

1. Prioritize Literacy

**1. Adopted Curriculum and
Blending Learning**

1. College and Career Pathways



Theory of Action: Prioritize Literacy

Literacy Intervention 2016-17 Progress



Link to LWP Literacy [video](#)

- Extensive Library expansion based on culturally relevant texts, high-interest books, and teacher/student choice
- Hiring of full-time literacy specialist
- School wide implementation of Wilson Reads Reading Block and Leveled Literacy Intervention groups
- Content specific literacy strategies across grade levels
- On-going literacy observation, coaching, and professional development
- Monthly students literacy celebrations and family literacy nights

Theory of Action: Prioritize Literacy

Spotlight on our Literacy Specialist

Carrie Berg

- Assists the principal, instructional coaches, and department leads to design and implement literacy RTI and content based strategy implementation
- Observes and coaches Wilson Reads and LLI
- Plans and facilitates professional development and family literacy events
- Coordinates and trains team of student librarians and HS WeRead Mentors
- Facilitates literacy data collection and analysis



Theory of Action: Curriculum

Rigorous Curriculum and Blending Learning - 2016-17 Progress

- Master Schedule designed for block classes
- Pathways aligned electives and college classes
- Adoption of comprehensive ELA Curriculum
- Additional staff members hired to allow for grade level content specialization
- Increased access to computers (6:7 ratio)
- Use of integrated platforms (Hapara, Google Classroom) and supplemental support programs (Math Navigate, Khan Academy, No Red Ink)

Period	Time	11A (TTh)	11B (MW)	11B (TTh)	12A (MW)	12A (TTh)
Period 0	7:25 - 8:20					
Period 1	8:25 - 8:50	Homeroom	Homeroom	Homeroom	Homeroom	Homeroom
Period 2	8:50 - 9:35	Wilson Reads	Wilson Reads	Wilson Reads	Wilson Reads	Wilson Reads
Period 3	9:40 - 11:00	Algebra 2	US History	English 3	College Readiness (H)	Econ (S2)
Lunch	11:05 - 11:35					
Period 4	11:40 - 1:00	English 3	Algebra 2	Physics	Calculus	Calculus
Period 5	1:05 - 2:25	US History	English 3	Algebra 2	ERWC	ERWC
Passing	2:25 - 2:35					
Period 6	2:35 - 3:55	EL Support (carrie)	Math Intervention (11th)	Intro to Business (College class)	Law and Democracy (College class)	Sci Internships Elective

Theory of Action: Pathways

College and Career Pathways - 2016-17 Progress



**COLLEGE
+ CAREER
PATHWAYS**

ASPIREPUBLICSCHOOLS.ORG

- Early College Pathway program materials
- Pathways aligned electives, extracurricular activities and college classes
- Sequence of Pathway Intro Activities
- Partnership with iMentor
- College Real Talks Family Event with speakers aligned to pathways
- Updated senior portfolio project with coaching



Community Change



- **COA Courses** - Community Violence and Prevention, Intercultural Communication, Ethnic Studies
- **Electives** - Social Justice, Student Government
- **Extracurriculars** - BAUDL, IGNITE, Youth Speaks, Men of Wilson Prep, Student Voice, Global Glimpse
- **Guest Speakers** - Social Worker, politicians, lawyers



COLLEGE + CAREER PATHWAYS

ASPIREPUBLICSCHOOLS.ORG

Business and Marketing



- **COA Courses** - Intro to Business, Intro to Technology, Public Speaking
- **Electives** - BUILD, Statistics
- **Extracurriculars** - BUILD, i-Mentor
- **Guest Speakers** - mentor partnerships





STEAM



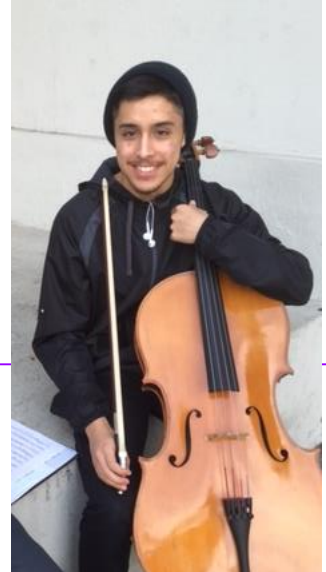
- **COA Courses** - Statistics, Intro to Painting
- **Electives** - AP Calculus, Anatomy and Physiology, 9th grade Forensics, Alameda County Science Fair, Yearbook
- **Extracurriculars** - SMASH, PiE, Athletics
- **Guests Speakers** - Mechanical Engineer, Civil Engineer, Marketing Executive, Medical Technician, Nursing Student

COLLEGE + CAREER PATHWAYS

ASPIREPUBLICSCHOOLS.ORG



Liberal Arts



- **COA Courses** - Intro to Business, Law and Democracy
- **Electives** - BUILD, Creative Writing, Film Studies
- **Extracurriculars** - BUILD, Film Club, SMASH, music club
- **Guest Speakers** - performer Brandon Brown, teachers

Measure N Strengths and Challenges

	STRENGTHS	CHALLENGES	Next step
Prioritizing Literacy	Targeted literacy intervention engages traditionally most underserved students Accelerated growth	Inconsistent at home reading Holding literacy time sacred	Meet AR goals Increase EL supports
Curriculum and Blended Learning	Complex grade level texts in all classes; rigorous tasks One dedicated ELA and Math teacher increases feedback and supports	Need to differentiate instead of scaffolds for all Math curriculum for MS	Continue coaching and progress monitoring
College and Career Pathways	Provides choice and rigor Explore vs Declare progress monitoring Integrated mentors for 75% of students*	Pathways not yet fully built out and institutionalized Staff to coordinate internships	Exhibitions integrate career awareness and exploration for 100% of HS

Student Testimonials

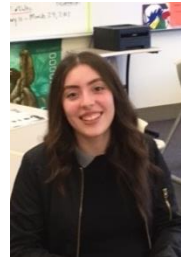
Alexis Delgado

- 11th Grader
- Participating in **iMentor** program
- Building excitement around a pathway that aligns to his career goals



Yvette Pena

- 10th Grader
- Very involved in extracurricular activities at LWP and elsewhere
- **Exploring** multiple pathways



Adamari Duran

- 12th Grader
- Career ambitions are clear and “**declared**”
- Aligned college classes and extracurricular experiences



Data

College Class Completion

COURSE	# of sessions	students enrolled	T# passed w/C	total % passed	# females	% females passed	# males	% males passed
CIS-Technology	3	73	46	63%	39	64%	34	62%
Intercultural Communication	1	32	18	56%	18	66%	14	43%
Law and Democracy	1	17	15	88%	5	100%	12	83%
Art	1	34	34	100%	23	100%	11	100%
Violence and Prevention	1	24	24	100%	13	92%	11	100%
Intro to Business	1	30	30	100%	18	100%	12	100%
Career Counseling	1	14	14	100%	8	100%	6	100%
Intro to Stats	2	40	28	70%	24	63%	16	81%
Algebra in Practical Context	1	18	14	77%	10	100%	8	50%
Withdrew		6						
totals		288	223	84%	158	87%	124	80%

Overall Pass Rate	84%
% Passing -Female	87%
% Passing -Male	80%
SPED Pass Rate	57%

Data

Pathways

Grade Level	"Exploring"		"Declaring"	
9th	43	63%	25	37%
10th	38	66%	20	34%
11th	36	75%	12	25%
12th	37	52%	34	48%



Pathway	"Exploring"		"Declaring"	
Community Change	24	9.80%	7	2.90%
Business/Marketing	26	10.60%	23	9.40%
STEAM	77	31.40%	50	20.40%
Liberal Arts	27	11%	11	4.50%

Data

Pathways

Business and Marketing DECLARING

I'm interested in pursuing a career in marketing because I have some experience with it since I'm in BUILD and so far I enjoy every second of it. I want to keep learning more about this pathway and joining a business class will help me.

STEAM DECLARING

I want to be a marine biologist and science is my main focus and what I am good at. I also like working hands on with what I am doing.



Data

Pathways

Community Change DECLARING

I care about my community and would like to expand my knowledge and prepare myself so I can come back and help our people.



Liberal Arts EXPLORING

I chose liberal arts because ever since I was small I would always like to be involved with art and I still enjoy sketching, drawing, and painting but I never had a class to learn more about it so I'm currently exploring it. Also, I'm exploring the Community change pathway because I want to be a counselor, therapist, or psychologist.

Data

Literacy

% of students at or above grade level:

Aug 2016: 15%

Oct/Nov 2016: 21%

Next test is in March



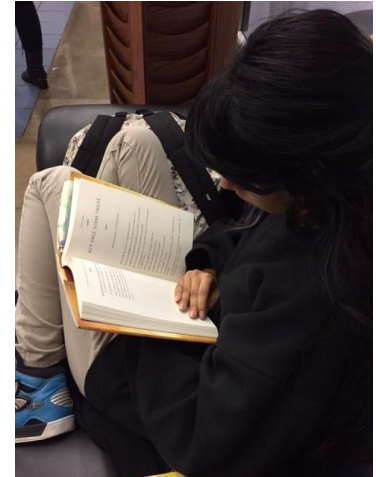
Growth from Q1 to Q2 (2016)

Average schoolwide: 0.5 yrs increase

Male: 0.51 yrs increase

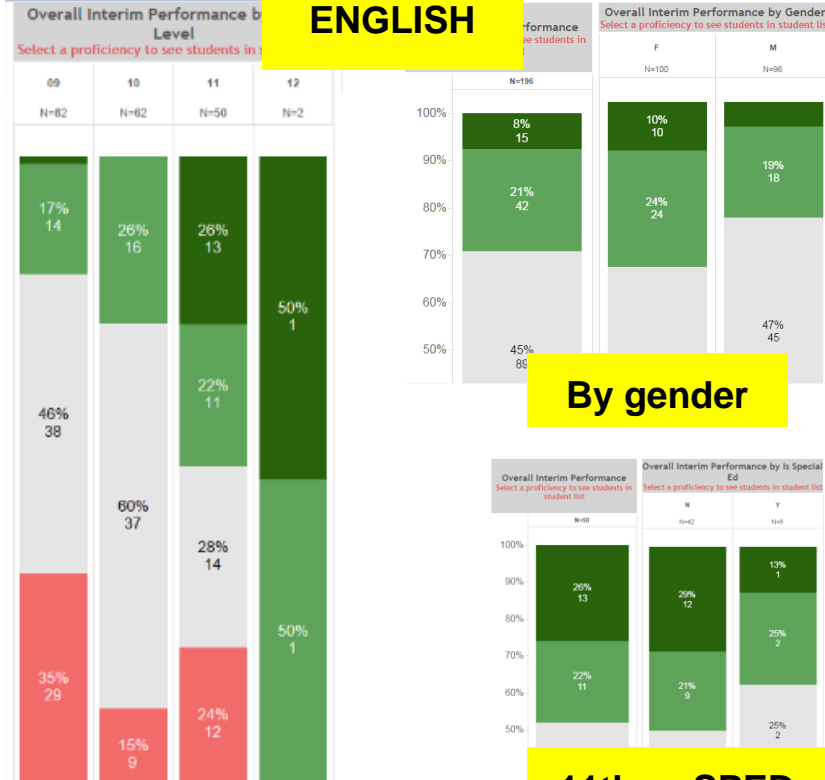
Female: 0.47 yrs increase

IEP: 0.54 yrs increase



Data IAB (SBAC aligned interim)

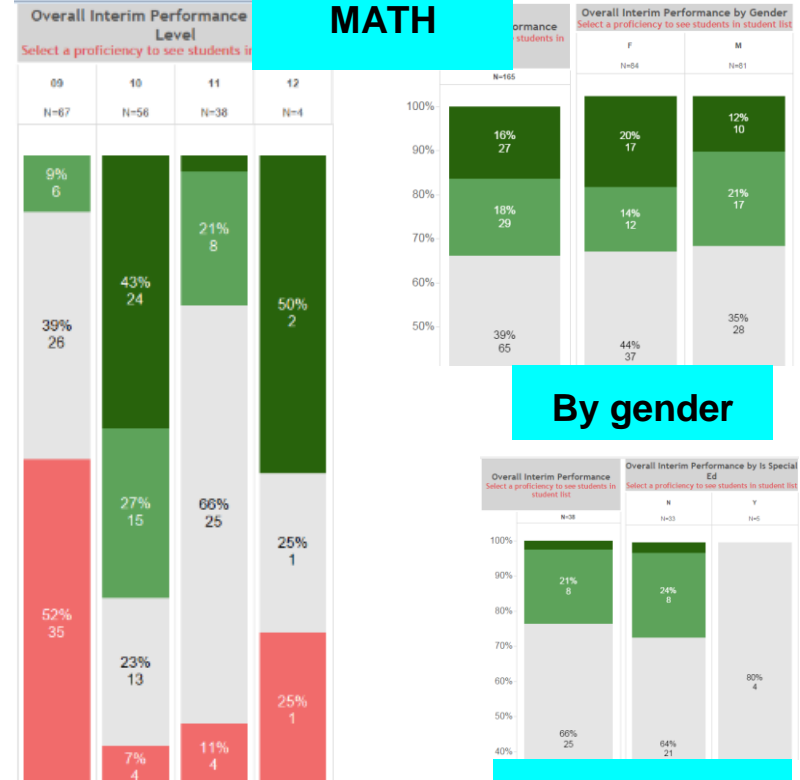
ENGLISH



By gender

11th gr SPED

MATH



By gender

11th gr SPED

Tools and Resources

ADDITIONAL RESOURCES and DOCUMENTATION



- 16/17 Work Plan with updates on Milestones
- Actions with accountability
- 3 year Work-Based Learning Plan
- 3 year Project-Based Learning Plan