



**OAKLAND UNIFIED
SCHOOL DISTRICT**

Community Schools, Thriving Students

Superintendent's Report



Presented by Antwan Wilson, Superintendent

Presented to Board of Directors, OUSD

June 8, 2016

www.ousd.org



@OUSDnews

Our Mission

Oakland Unified School District (OUSD) will build a Full Service Community District focused on high academic achievement while serving the whole child, eliminating inequity, and providing each child with excellent teachers, every day.

Our Vision

OUSD students will find joy in their academic experience while graduating with the skills to ensure they are caring, competent, fully-informed, critical thinkers who are prepared for college, career, and community success.

I Am Oakland Unified

Our belief is that significant improvement in student outcomes is driven at the school level. Our every action centrally is in the service of one purpose: building quality community schools that prepare students for college, career, and community success.



Superintendent's Report

- 2016 Local Business Utilization Report
- Update - Staffing Report – 2016-2017 School Year



**OAKLAND UNIFIED
SCHOOL DISTRICT**
Community Schools, Thriving Students



2016 Local Business Utilization Report

Table of Contents



**OAKLAND UNIFIED
SCHOOL DISTRICT**
Community Schools, Thriving Students

- I. Local Business Policy Overview**
- II. Category Definition**
- III. From Beginning to Date**
- IV. Capital Program Local Business Utilization 2015**
- V. Local Utilization Breakdown**
- VI. Project Highlight (Whittier Lease Lease Back)**
- VII. Fall 2015 Legislative Bus Tour**
- VIII. Success Stories – Local Business Testimonials**
- IX. Community Partner**
- X. Why Buying Local is Worth Every Cent**
- XI. Other LBU Updates**

In 2008, OUSD Board of Education passed it's first Local/Small Local Business Policy establishing that all District contracts had 20% local business utilization (LBU) requirements.

In 2014, Board amended policy to increase LBU on Capital Program to 50% requirement of all contracts.



**OAKLAND UNIFIED
SCHOOL DISTRICT**
Community Schools, Thriving Students

Local/Small Local Business Policy Overview





360 Total Concept
(Team 360) is District's
contract compliance
team overseeing local
business program to
ensure policy
requirements are met.

Based on overall
success of the
program, we have
received national
recognition for Best
Practices.

Importance of Monitoring

- Monitoring Component helps to ensure Program goals are met
- Compliance team tracks monthly contract dollars spent
- Monthly reports verify that contracts are in compliance with Local Business Policy
- We conduct technical assistance workshops to provide support to local contractors



Local Business Definitions

LBU Type	Definition
Local Business (LBE)	An Oakland business (a) with a substantial presence in the District's geographic boundaries (b) fully operational for 12 consecutive months and (c) a valid business tax certificate.
Small, Local Business (SLBE)	A business that (a) meets the Size Standard set by the District for small businesses; (b) is an independent business headquartered in the District's geographical boundaries; (c) has a substantial presence within the District's geographic boundaries; (d) is a full operation conducting business for at least 12 consecutive months; and (e) holds a valid business tax certificate.
Small, Local Resident Business (SLRBE)	A business that (a) meets the Size Standard set by the District for small businesses; (b) is an independent business headquartered in the District's geographical boundaries; (c) is wholly owned and operated by persons whose principal place of residence is located within the boundaries of District's geographical boundaries; (d) is a full operation conducting business for at least 12 consecutive months; and (e) holds a valid business tax certificate.

Team 360 certify Small, Local Resident Businesses. These are the Oakland property, business owners whose taxes fund the Capital Program bonds.

This certification gives teams with SLRBE's additional preference points or bid discounts.

In 2015 certified SLRBE's increase by 31%

SLRBE Certification



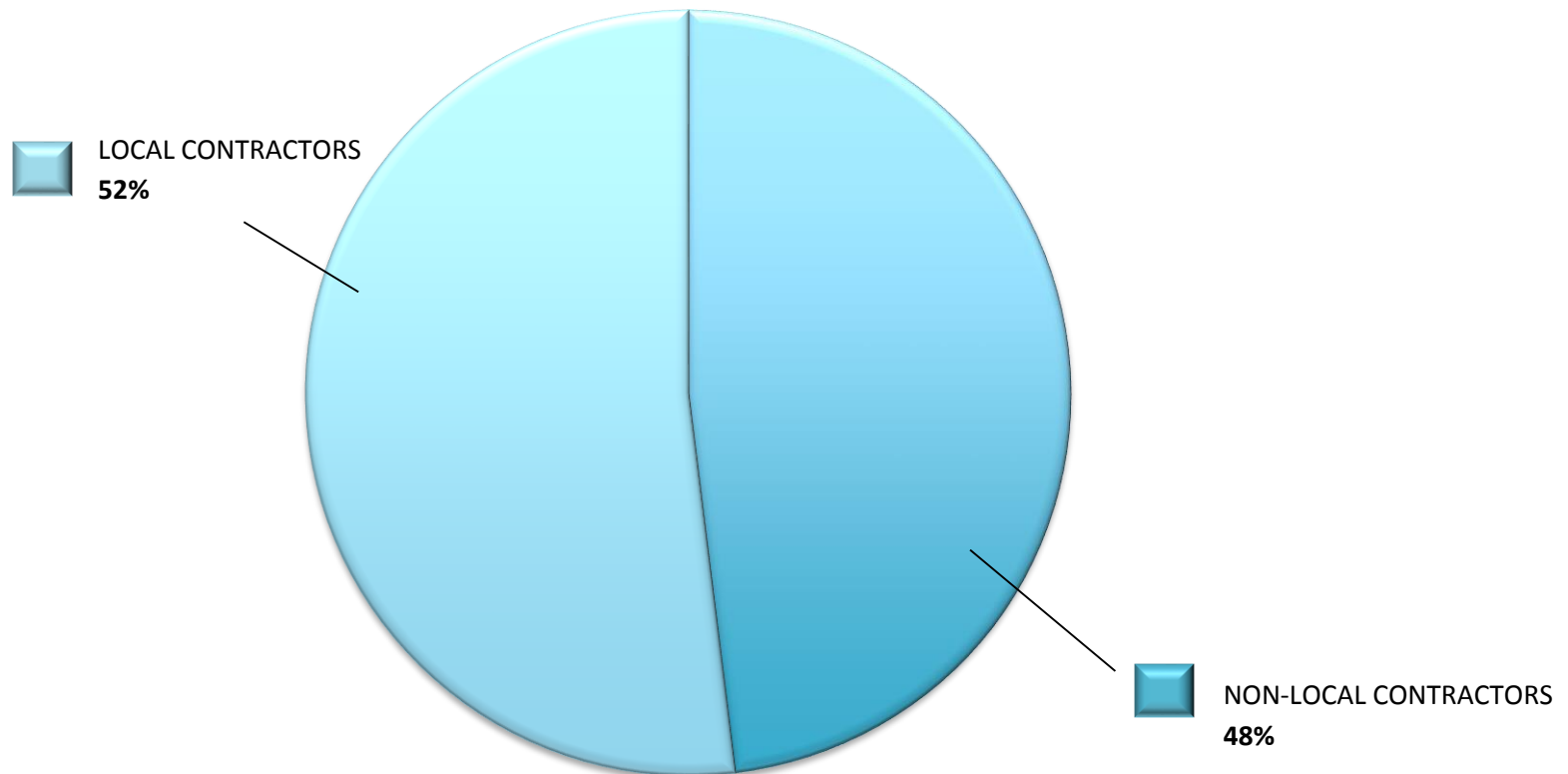
**OAKLAND UNIFIED
SCHOOL DISTRICT**
Community Schools, Thriving Students





Capital Program Local Business Utilization (Cumulative)

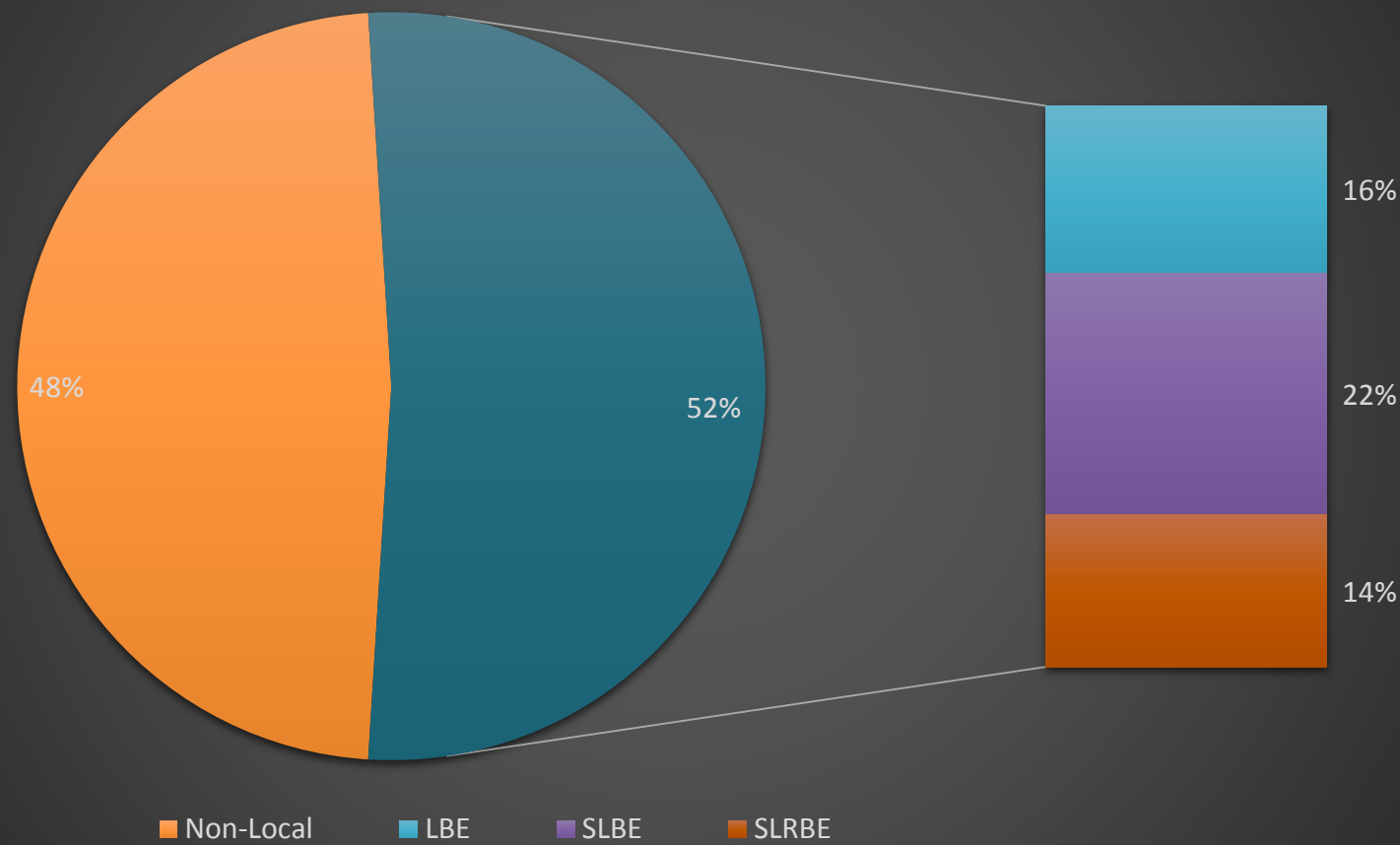
ESTIMATED TOTAL CONTRACT DOLLARS: **\$328,647,983**
CURRENT TOTAL LBU CONTRACT DOLLARS: **\$170,724,810**



As of December 2015

Cumulative Local Business Utilization Break Down (by category)

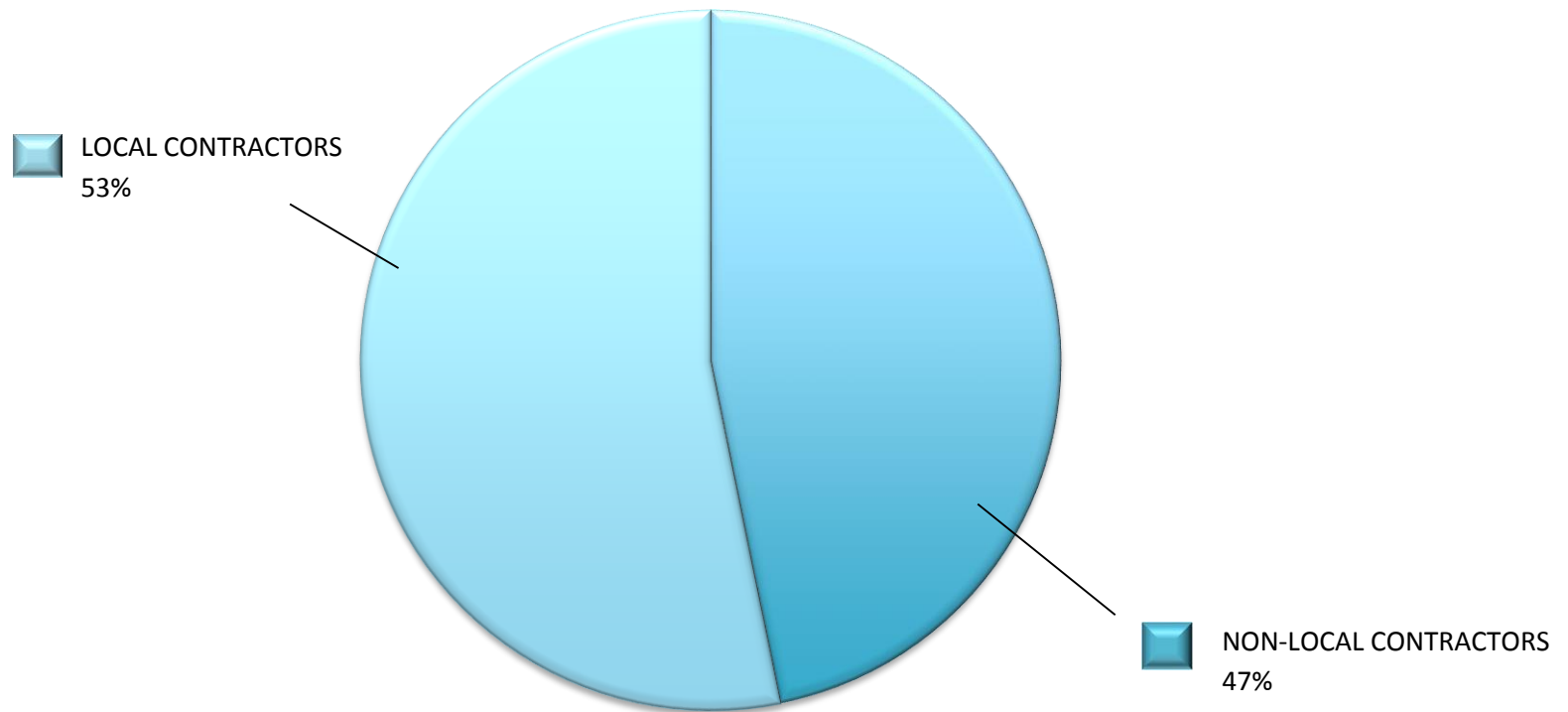
Overall LBU Participation Breakdown



Capital Program

Local Business Utilization CY2015

ESTIMATED TOTAL CONTRACT DOLLARS: \$75,308,795
CURRENT TOTAL LBU CONTRACT DOLLARS: \$40,065,942*

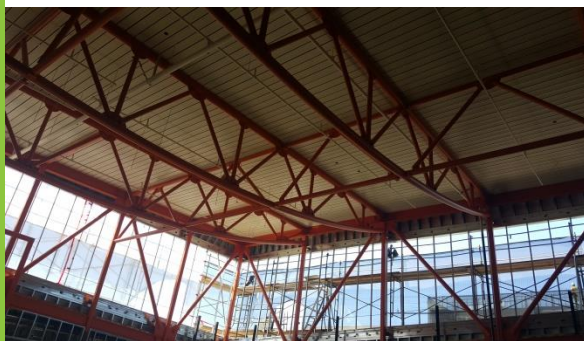
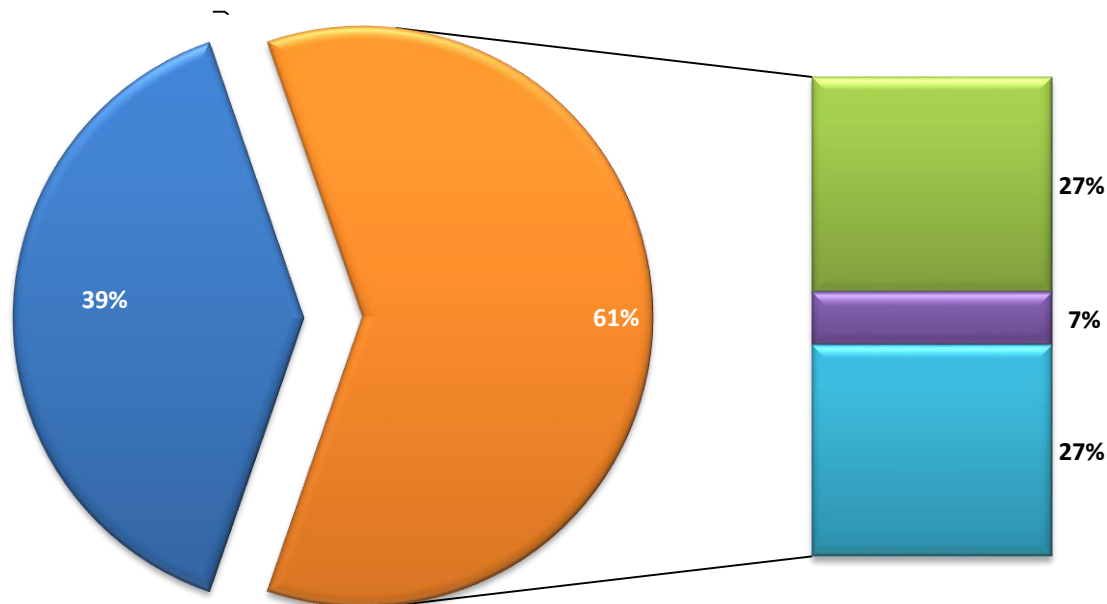


January - December 2015



Project Highlight – Greenleaf at Whittier Phase I

■ Non-Local ■ Local ■ LBE ■ SLBE ■ SLRBE



Project Manager:
Kenya Chapman

JV Partners:
Cahill/Focon 100% Local JV
Prime

Project LBU: 61%

Project Amount:
\$5,381,035

LBU:
\$3,301,242

Completion Date:
August 2015

Local Hire: 49%*
Oakland Apprenticeship: 60%*

*Local Hire Data provided by DSI

SUCCESS STORIES –LOCAL BUSINESS TESTIMONIALS



**OAKLAND UNIFIED
SCHOOL DISTRICT**
Community Schools, Thriving Students



SUCCESS STORIES –LOCAL BUSINESS TESTIMONIALS



**OAKLAND UNIFIED
SCHOOL DISTRICT**
Community Schools, Thriving Students



SUCCESS STORIES –LOCAL BUSINESS TESTIMONIALS



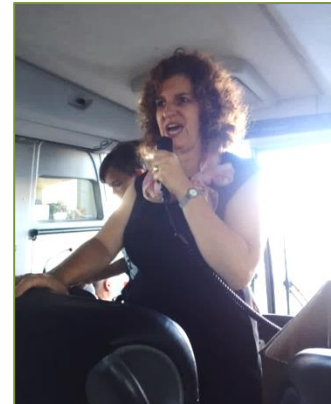
**OAKLAND UNIFIED
SCHOOL DISTRICT**
Community Schools, Thriving Students



As Part of our monitoring and compliance work Team360 partners with OUSD to host Legislative Bus Tours for local leaders to see first hand how voter approved bond money is spent to improve schools for Oakland students



**OAKLAND UNIFIED
SCHOOL DISTRICT**
Community Schools, Thriving Students



Hosting the legislative bus tours highlight the District as a formidable **community partner**

Why Buying Local is Worth Every Cent



OAKLAND UNIFIED
SCHOOL DISTRICT

Community Schools, Thriving Students

Community Benefits stem from Local Business Program

If every family in the U.S. spent an

extra \$10 a month

at locally owned, independent business

over \$9.3 billion

would be directly returned to our economy.



A \$78 out of every \$100 spent with a local business is returned in some form to the community.



- Local First

-- American Independent Business Alliance

Content Source: <http://www.amiba.net/resources/multiplier-effect/>

OUSD Local Business Program is good for Oakland businesses, residents and the Community at-large

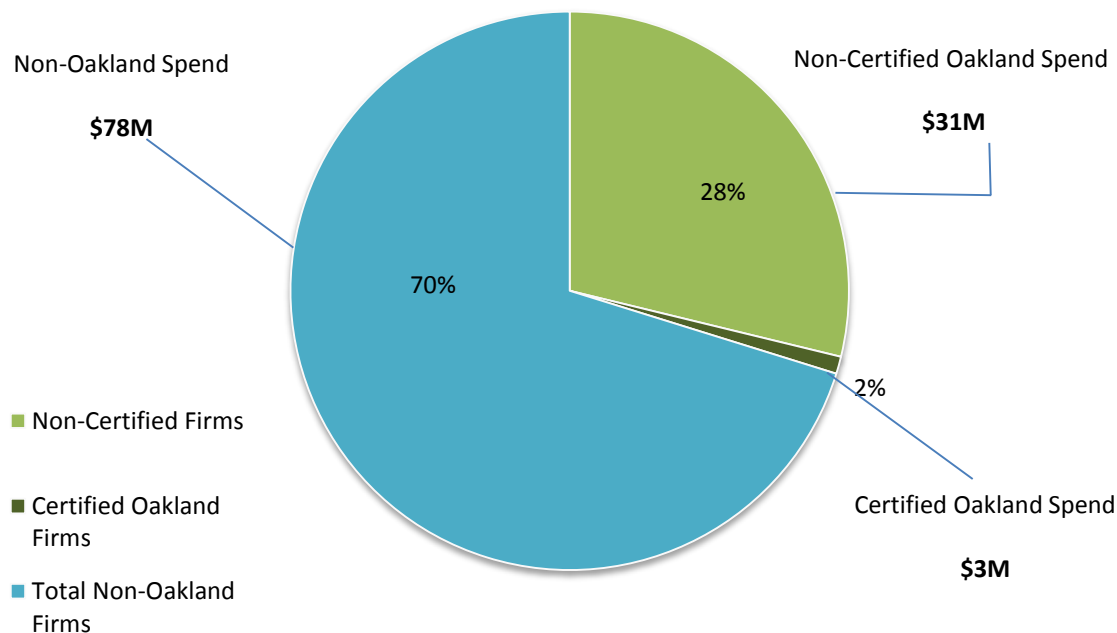


OUSD LOCAL BUSINESS UTILIZATION FOR PROCUREMENT



Breakdown of Total Spend
Fiscal Year July 2014-June 2015
Certified Oakland Firms vs. Non-Certified Oakland Firms vs. Non-
Oakland Firms

Total Procurement Spending: **\$112M**



Procurement Oakland spend is now 30% exceeding 25% requirement. In 2008 the Oakland spend was 6%.

It is the District's goal to have Procurement under same 50% requirement as the Capital Program.

Team 360 worked with the Procurement team to create a culture of "Oakland First" modeled after Facilities success, as a way to increase LBU.

Team 360 created a campaign to brief department leads on Local Business Program and importance of spending District money with local community.

Team360 in collaboration with OUSD Procurement and City of Oakland hosting for the first time in Oakland history an On-Site Certification workshop.

Firms Certified at Workshop:

Pacific Rim Produce

Revolution Foods

Safe Passages

National Equity Project

Oakland Ed Fund

Galaxy Travel

East Bay Consortium

East Bay Asian Youth Center



**OAKLAND UNIFIED
SCHOOL DISTRICT**

Community Schools, Thriving Students

“\$78 out of every \$100 spent with a local business is returned in some form to the community.” ~Local First

#LocalBusinessMatters



photo credit: Oakland Ed Fund



photo credit: Spotlight



**OAKLAND UNIFIED
SCHOOL DISTRICT**

Community Schools, Thriving Students

www.ousd.org     @OUSDnews





**OAKLAND UNIFIED
SCHOOL DISTRICT**

Community Schools, Thriving Students

2016-17 School Staffing Report



Presented by Tara Gard, Talent Division

Presented to the Board of Education

June 8, 2016

www.ousd.org



@OUSDnews

Classroom Teacher Vacancies and Hires as of June 8, 2016

Classroom Teachers			
Month	Jan-Apr	May	As of June 7th
Beginning Vacancies	243	252	178
Additional Vacancies*	97	49	12
Total Vacancies	340	301	190
- Hires**	88	123	27
Ending Vacancies	252	178	163

* Additional Vacancies (include new separations, candidate withdrew from hiring process or new position creation)

** Total Hires (includes internal and external)

Overall Total: Classroom Teacher Positions & Selections as of June 8, 2016

Classroom Teachers	
Total Vacancies	401
Total Hires	238
Total Vacancies	163

board

Classroom Teacher Vacancies by Subject as of June 8, 2016

Subject	# of Vacancies
Multiple Subjects	59
Special Education	23
English	15
Math	15
Bilingual Multiple Subjects	9
Science	9
Social Science	9
Multiple Subjects Core	8
Physical Education	6
Dual Immersion	2
Elective	2
Foreign Language: Spanish	2
Math/Science	2
Art	1
Music	1
Total Vacancies	163

Certificated School Site Staffing (by Network) as of June 2016

Network	# of School Leader Vacancies*	2015-16 Authorized Classroom Teacher Positions*	2016-17 Classroom Teacher Vacancies*
Network 1		356	9
Network 2		293	21
Network 3	1	232	13
Network 4		255	7
High School Network		458	35
Middle School Network		257	20
Elevation Network		360	58
Total	1	2211	163

* Vacancies and Authorized FTE will continue to fluctuate due to staffing changes.

School Leader Hires (Detail by School Site) as of June 8, 2016

School Leaders	
Vacancies as of June '16	20
- Selected Candidates	19
Total Current Vacancies	1

School Site	Name of Selected School Leader
Skyline	Nancy Bloom & Vinnie Blye
McClymonds	Jaron Scott
Fremont	Rosemary McAtee & Tom Skjevhiem
Westlake	Jonathan Ferrer
New Highland	Yolanda Cater
La Escuelita	Jeff Franey
Greenleaf	Romy Trigg-Smith
Kaiser	Dennis Guikema
Hillcrest	Jeanne Elliot
Montclair	Elizabeth Austin
Futures	Shelley Hawkins-McCray
Garfield	Alicia Arenes
ICS	Eleanor Alderman
Korematsu	Candidate in Process
RISE	Candidate In Process
CUES	Candidate in Process
East Oakland Pride	Vacancy



Looking Ahead

OUTREACH

- Weekly Recruitment Fairs – Special Education Teachers
- Bi-Weekly Recruitment Fairs – All other positions
- Recruitment Partnerships
- Launched Afterschool Programs

CANDIDATE CULTIVATION

- Improved Screening Practices
- Targeted messaging/communication