



**College &
Career for
All Fund**

Established by Measure N



**OAKLAND UNIFIED
SCHOOL DISTRICT**

Community Schools, Thriving Students

Rudsdale High School

2023-2024 Measure N Education Improvement Plan Presentation



Presented to Measure N Commission

April 20, 2023

www.ousd.org



@OUSDnews

Overview of School - [4 pillar slide](#)

Student Enrollment of School (fluctuates every 6 weeks)

- 307 students enrolled, 50/50
- Students from ALL HS's across Oakland
- Highlights of Student Demographics
 - Only Newcomer Continuation:
 - 65% Guatemalan,
 - 75% UIY,
 - 80% 18 years+
 - Schools of choice--motivated to graduate
- Other highlights of school
 - Biggest December Graduation: 57 students!
 - will be over 100 this May!
 - Culturally relevant healing practices and growth after shooting



Our Pathways

- **Technology Pathway**

- Web Design & Coding - currently
- Fabrication & Manufacturing - student lead
- Fab Lab and Mini lab

- **Health Pathway**

- Mental & Behavioral Health
- Hired 3 grads to work with us!
- Partnerships:
 - Cultura Y Bienestar and Freedom Community Clinic classes
 - Dr. Emily Frank



Equity



- Focus on reading instruction in all classes
- Focus on relationships: 1-1 orientation, robust supports, small classes
- Culturally relevant unit projects, texts, experiences
- Graduation portfolio includes post HS plans & WBL experience
- All grads complete FAFSA and CA Dream Act



Reflections on Success- Health Pathway

HEALTH PATHWAY

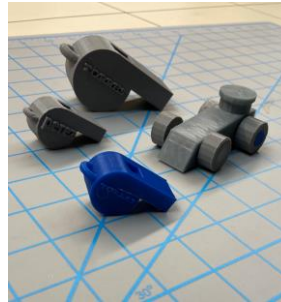
- 1-1 support for every graduate.
 - Transition specialist even provides support through Community College!
- Health Electives: Urban Food and Farm, Soccer without Borders, Embodying Mindfulness, Mam Interpreting, Kinesiology, Hiking Club, Financial Literacy, Music Production, Intro to Sports
 - working with Dr. Frank to build out Community Health Worker (strength=multilingual!)



Reflections on Success- Tech Pathway

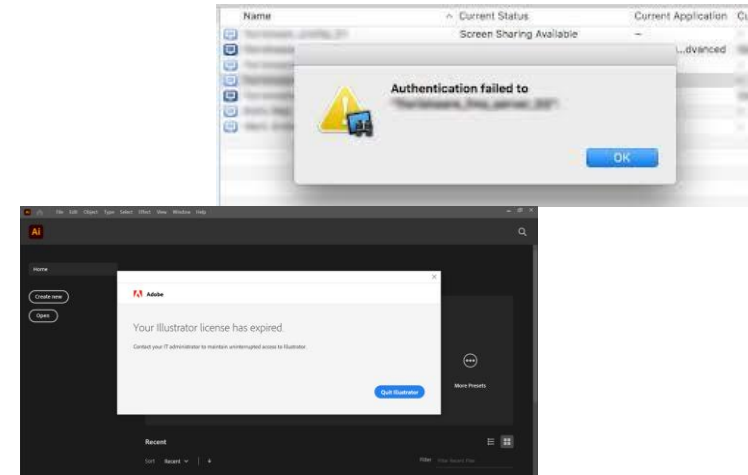
TECH PATHWAY

- Building out a physical Fab Lab & Mini Fab Lab
- Students plus Staff learning technology applications associated with all machines
- More teachers have a technology based unit design and project
- 100% of students who graduated had at least one WBL experience



Reflections on Challenges

- **Project Based Learning:**
 - Getting ALL teachers to do performance tasks that are aligned to our pathway theme
 - Civic action (not just posters)
- Admin Technology access to update and upgrade all of our machines and computers
- **Rolling Admissions/6 week marking periods:**
 - CTE scope & sequence is difficult
 - Short time to complete projects
 - Transience and inconsistent attendance



Reflections on Past 3 Years: Learnings



- Hands-on learning is best
- Strong projects for learning and engagement
- Strong culture, and 1-1 supports = Thriving students
- Integrating Work Based Learning opportunities into the Graduation Portfolio
 - *Strengthens student postsecondary future planning and career exploration*
- Focusing on relevant skills that support student career and college readiness
 - Example: creativity, communication, collaboration, and critical Thinking

Looking Ahead

- Students can envision themselves in college and various careers when we have hands-on visits
- Foster stronger partnerships with the Peraltas
 - *At least one visit every 6 weeks, utilize our alumni network*
 - *Re-imagine concurrent and dual enrollment possibilities--more relevant & accessible will increase pass rates and attendance*
- More focus on improving PBL and integrating pathways specific content into all classes
- Graduation Portfolio
 - Opportunity for students to showcase and reflect on their learning, skills, growth, and future plans



Looking Ahead

- WBL reflection form to improve student experiences
- CTE Health Pathway Coach will work with English teachers to integrate health and CTE Skills
- Dual enrollment offerings will focus on ESL and career readiness
- College and CEV experiences every 6 weeks
- Having a minimum of 2 Fab Lab centered projects in each academic core class per academic year
- Increase students attending Peralta colleges by 5-10% with targeted transition support



Looking Ahead



What are your biggest challenges moving forward?

- Attendance & enrollment.
- Language and translation access for students.
- Integrating FabLab machines and diverse technology industry professionals into content area classes
- Internships/community opportunities competing with jobs due to students' financial responsibilities
 - Providing student stipends doesn't suffice and there's a barrier for undocumented students to get paid

Questions?

EVERY STUDENT THRIVES!



**OAKLAND UNIFIED
SCHOOL DISTRICT**
Community Schools, Thriving Students

1000 Broadway, Suite 680, Oakland, CA 94607

www.ousd.org



@OUSDnews

Contact us for additional information [optional contact area]
Phone: 510.555.5555 | Email: info@ousd.org