



OAKLAND UNIFIED  
SCHOOL DISTRICT

Community Schools, Thriving Students

# Budget & Finance Committee COVID Testing Update



Presented by: Sailaja Suresh, Senior Director of Strategic Projects

May 12, 2022

[www.ousd.org](http://www.ousd.org)



@OUSDnews

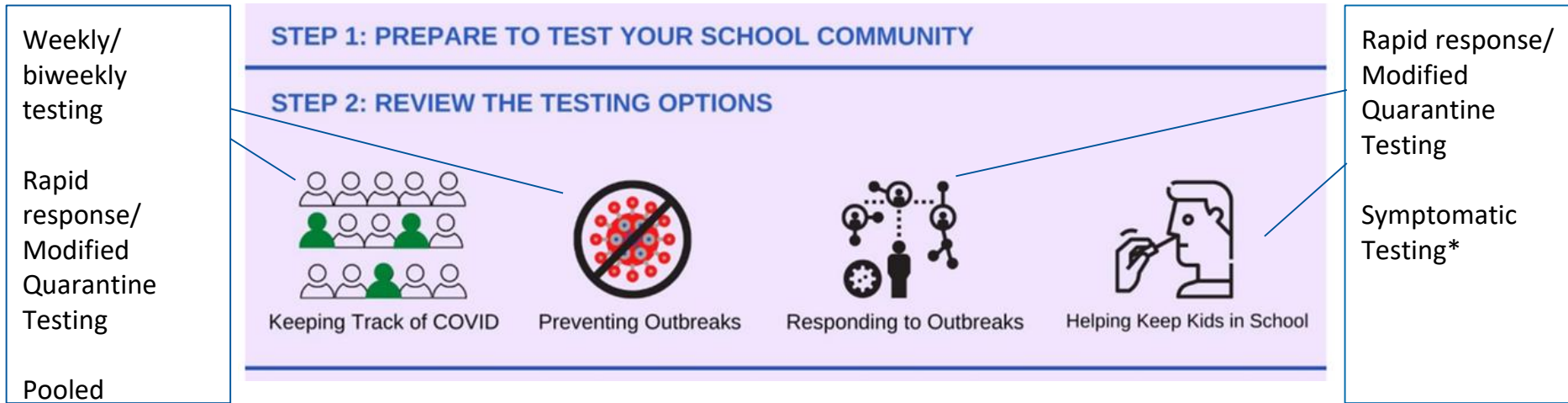
# Goals & Outcomes

---

1. Review public health testing guidance from June 2021 - present
1. Review OUSD costs for testing from June 2021 - present
1. Preview guidance & choices for 22-23



# Public Health Guidance: June 2021-Present



## Testing\*\*

At-home tests only available from CDPH for partial coverage for Thanksgiving, full coverage at winter break and spring break.

At-home tests not available from vendors for full coverage until February 2022.

\* PCR tests were required for symptomatic return until Dec. 2021

Rapid antigen tests were intermittently unavailable from CDPH from August 2021 - October 2021

PCR tests were intermittently backordered and unavailable from CDPH from August 2021 - October 2021

30 testers paid for by CDPH (increased to 60 for August-September, then to 40 through June). CDPH requires 3 testers work as a team on any assignment.

CDPH did not authorize staff to test pre-K students until March 2022.

\*\* Pooled tests provided with no staffing support from CDPH

# OUSD Board Policy

**NOW, THEREFORE, BE IT RESOLVED**, the Board of Education hereby directs the Superintendent to ensure that COVID tests are offered at each school consistent with the following parameters:

- Tests shall be offered to all students and staff,
- Tests shall be offered on a biweekly basis as soon as it is feasible,
- Tests shall be offered to all students and staff prioritizing those who are unvaccinated, and
- Students and staff shall not be required to take the test unless it is recommended pursuant to public health guidance;

**BE IT FURTHER RESOLVED**, the Board directs the Superintendent to take the following steps towards increasing COVID testing capacity:

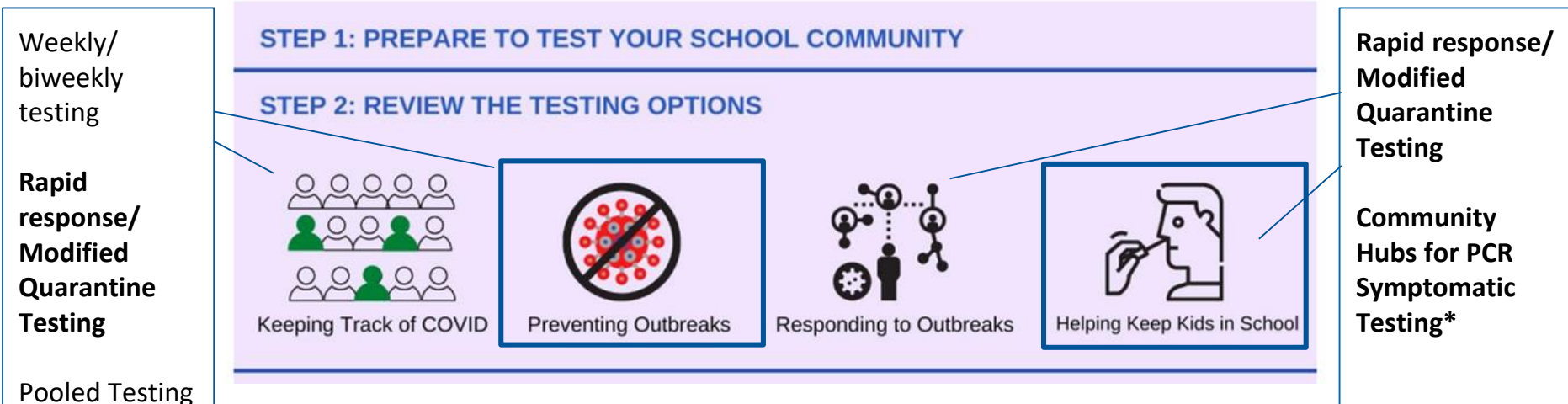
- Deploy confidential staff to respond to exposures at school sites and support testing efforts,
- Engage with District labor partners to seek existing staff who may be willing to take on additional duties to expand our testing capacity, and
- Seek additional support from state and county partners to increase our testing capacity;

**BE IT FURTHER RESOLVED**, as the District builds up its COVID testing capacity, rapid response teams will continue to be prioritized so that exposed individuals are tested as soon as possible after exposure is confirmed;

**BE IT FURTHER RESOLVED**, as testing is rolled out to additional school sites, the Board directs the Superintendent to prioritize schools in neighborhoods with the highest infection rates according to Alameda County Public Health Department data; and

**BE IT FURTHER RESOLVED**, the Board directs the Superintendent to increase hours at current testing locations so that students and staff can access the tests outside of school hours.

# OUSD Testing Program



**At-home tests:** Additional tests, from 2 vendors, had to be purchased for OAL, ECE, Thanksgiving, staff for winter break, & spring break. **(\$2,915,378.97)**

**PCR tests:** Additional tests had to be purchased to ensure supply at community hubs and as an option during MQ testing. **(\$8,818.00)**

**Rapid antigen tests:** Additional tests had to be purchased to ensure adequate supply at community hubs and MQ testing. **(\$785,569.72)**

**Testers & Contact Tracers:** Additional testers and contact tracing staff, from 6 vendors, required to staff biweekly/weekly testing schedule in addition to MQ and community hubs. **(\$8,830,664.16)**



# OUSD Testing Program

1. Regional hubs & MQ Testing

1. Biweekly Testing

1. Weekly rapid & Pooled Testing

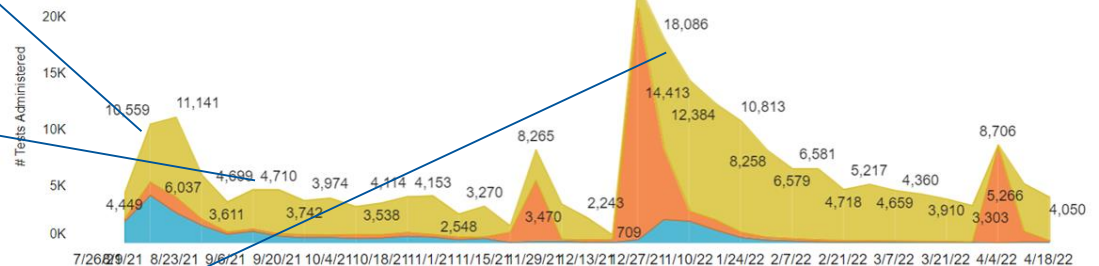


## Weekly COVID-19 Testing at OUSD Sites 2021-22

Data shown include COVID-19 tests administered through OUSD testing programs and reported via Primary from August 9, 2021 through the prior Sunday. OUSD is currently piloting pooled testing, which is not reflected in this dashboard.

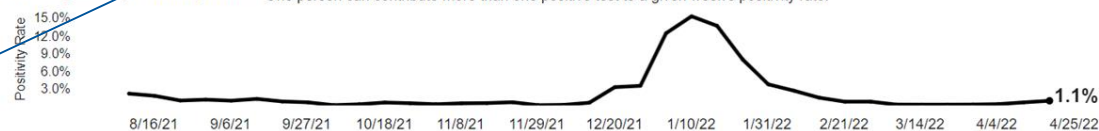
Weekly count of COVID-19 tests administered by week

On-site Rapid Antigen At-home Rapid Antigen PCR



Weekly test positivity rate

Test positivity rate is calculated as the number of positive tests out of the total number of tests with a result for that week. One person can contribute more than one positive test to a given week's positivity rate.



Cumulative count of COVID-19 tests administered since the start of the 2021-22 school year

157,524

On-site  
Rapid Antigen Tests  
administered since August 9, 2021

+

52,745

At-home  
Rapid Antigen Tests  
administered since August 9, 2021

+

23,926

PCR Tests  
administered since August 9, 2021

=

234,297

Total Tests  
administered since August 9, 2021

Contact [salila.suresh@ousd.org](mailto:salila.suresh@ousd.org) with any questions or comments about this dashboard.

Dashboard is updated nightly. Data here include COVID-tests administered and resulted up to 4/24/2022

Average non-surge/holiday fall demand (9/13-11/19):  
3,861 tests per week

Average non-surge/holiday spring demand (2/21-4/22):  
4,316 tests per week (12% increase)

## OUSD Positive Cases



## Weekly Districtwide Data

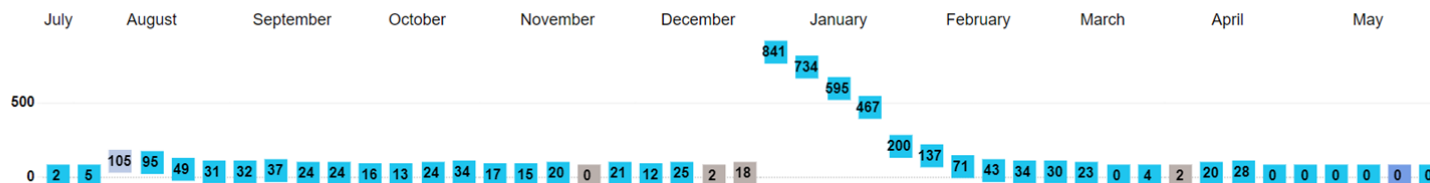
Dashboard last updated on 4/25/2022

Dashboard is updated daily 7am to include all reported cases with presumed positive dates occurring in the prior week (4/18/2022 to 4/24/2022), as well as full at-home classroom quarantines for dates up to 01/10/2023. Cases for the current week of 4/25/2022 will not be reflected in the dashboard until the following Monday. Counts include cases reported for OUSD school-based staff and students who were physically present on school campuses during their infectious period for COVID-19. Data may be incomplete depending on when the case was reported/confirmed and when contact tracing was completed. The presumed positive date is the earlier of first symptom onset or positive test collection date. Pursuant to updated guidance from ACPHD and CDPH as of 01/10/2022, classroom at-home quarantines will no longer be indicated following multiple cases.

Calendar Note

- First Week of School
- Last Week of School
- In Session
- Break

### Weekly count of reported student COVID-19 cases on school campuses



### Weekly count of reported staff COVID-19 cases on school campuses



### Weekly count of classrooms in full at-home quarantine

Graph shows the weekly count of classrooms with at least 1 day during the week in full at-home quarantine. Full at-home quarantines may last up to 10 days after the date of on-site exposure and thus 1 classroom may be represented across multiple weeks (depending on when cases are reported to us). Effective beginning the week of 08/30/21, high schools are not undergoing modified quarantines, and thus high school full at-home quarantines initiated by one positive case are no longer reflected here. Only TK-8 and early childhood classrooms with 3+ potentially epidemiologically linked cases prior to the week of 01/10/22 are reflected here, following new guidance from ACPHD and CDPH regarding classroom at-home quarantines.



# Testing Takeaways

---

- Safety measures including PPE, improved ventilation, high vaccination rate, and testing kept schools open during Delta & Omicron.
- Testing demand follows rise/fall of community positivity rates.
- Increased testing supply/access does not yield a corresponding rise in increased testing use.
- CDPH has yet to issue guidance for school-based testing programs for SY 22-23.
- Implementing site-based testing requires time & coordination by school-based staff.



# Testing Takeaways

---

---

Total Cost 21-22	\$	12,624,431
Cost for Testing & CT Contractors & staff	\$	8,916,873
Cost for Tests	\$	3,707,558
Cost per test 21-22	\$	34.12
Cost per positive case 21-22	\$	1,942.22
Total estimated positives 21-22		6,500
Total estimated tests 21-22		370,000

# Testing Expectations for SY 22-23

