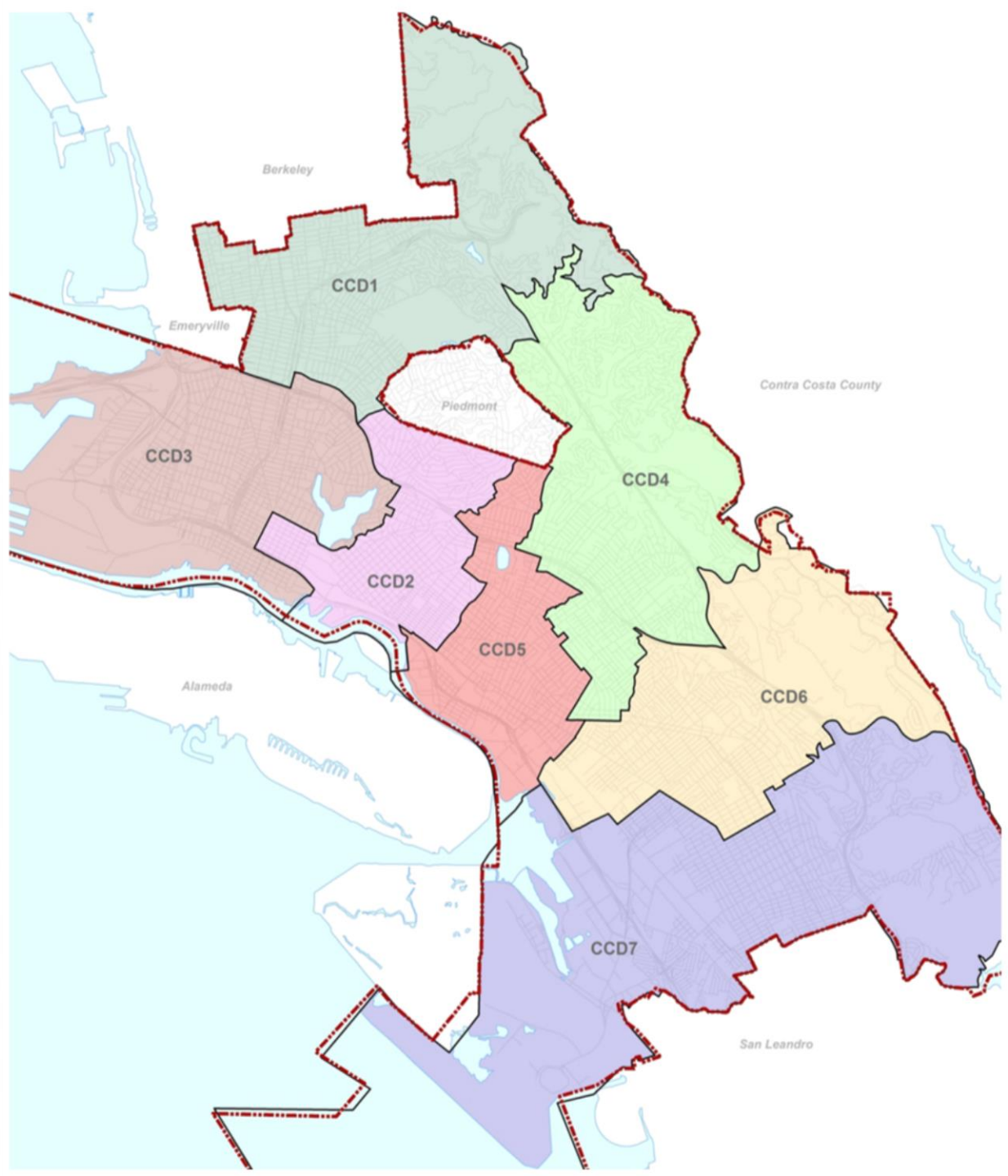




# City of Oakland 2013 Redistricting

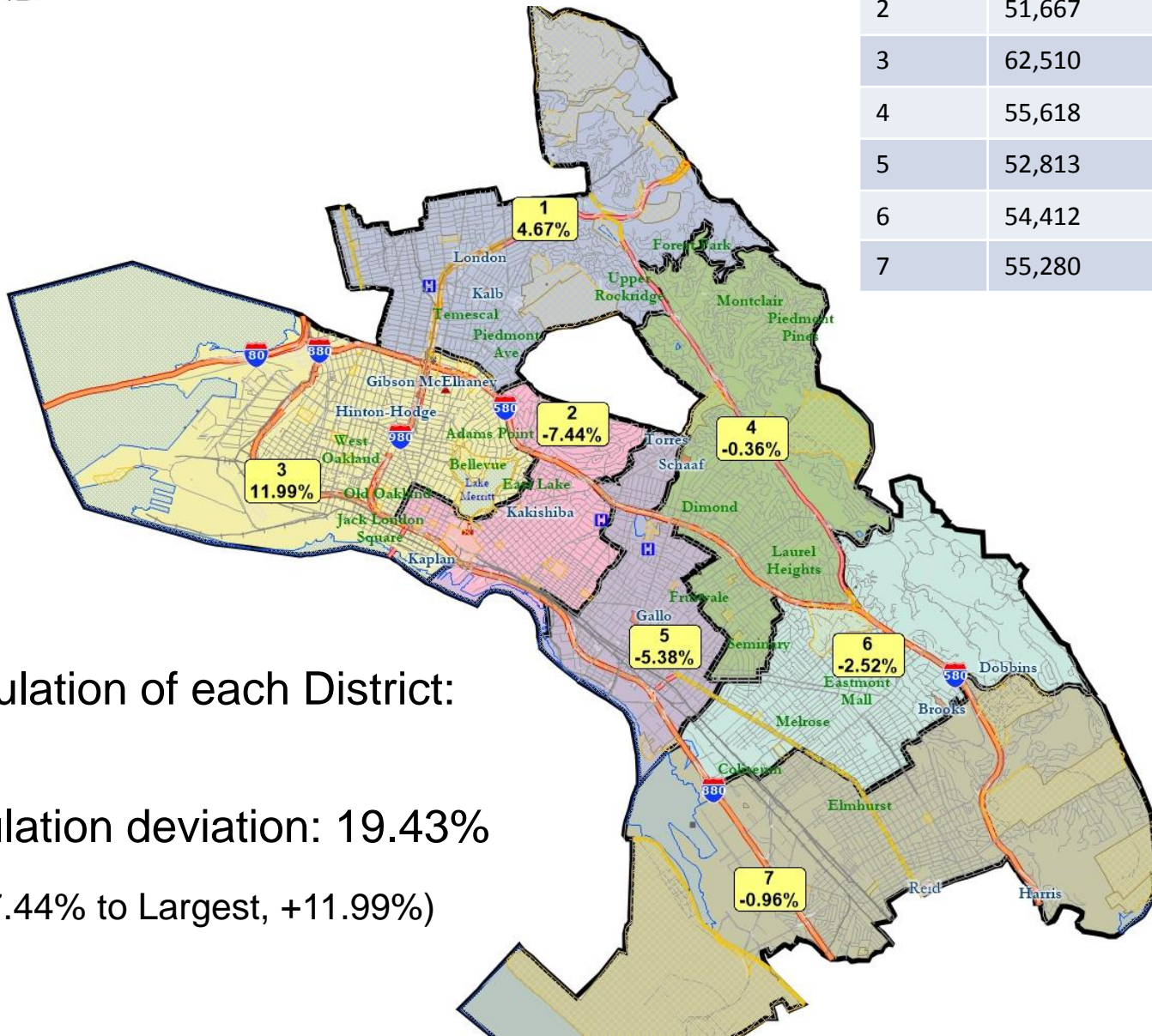
Presentation to OUSD Board,  
August 28, 2013





# Current Districts

District	Population	Deviation
1	58,424	2,606
2	51,667	-4,151
3	62,510	6,692
4	55,618	-200
5	52,813	-3,005
6	54,412	-1,406
7	55,280	-538



Ideal population of each District:  
**55,818**

Plan population deviation: 19.43%

(Smallest: -7.44% to Largest, +11.99%)



# Oakland Demographics

Total Population in the City of Oakland from the 2010 US Census:

- Total: 390,724
  - *A 2.2% drop from 399,484 in 2000*
- Hispanic: 25.4%
- Non-Hispanic White: 25.9%
- Non-Hispanic Black: 28.1%
- Non-Hispanic Asian: 17.7%

Total City population divided by 7 (for the seven Council and School Board Districts) equals *the ideal population of each of the seven Districts: 55,818*

**Source:** 2010 US Census



# Oakland Demographics: Other Data

## Voting Age Population

- Total: 307,604
- Hispanic: 21.9%
- Non-Hispanic White: 29.0%
- Non-Hispanic Black: 28.0%
- Non-Hispanic Asian: 18.5%

## Citizen Voting Age Population (“**CVAP**”)

- Total: 197,216
- Hispanic: 12%
- Non-Hispanic White: 35%
- Non-Hispanic Black: 34%
- Non-Hispanic Asian: 16%

## Voter Registration (Nov. 2012)

- Total Registered: 213,809
- Spanish-Surnamed: 10%
- Asian-Surnamed: 9%
- Filipino-Surnamed: 1%

## Voter Turnout (Nov. 2012)

- Total Registered: 158,102
- Spanish-Surnamed: 9%
- Asian-Surnamed: 8%
- Filipino-Surnamed: 1%

**Sources:** 2010 Census, US Census Bureau’s 2007-2011 American Community Survey, and the California Statewide Database



District	1	2	3	4	5	6	7	Total
Total Population	58,424	51,667	62,510	55,618	52,813	54,412	55,280	390,724
Deviation from Mean Population	2,606	-4,151	6,692	-200	-3,005	-1,406	-538	10,843
% Deviation from Mean Population	4.7%	-7.4%	12.0%	-0.4%	-5.4%	-2.5%	-1.0%	19.4%
<b>Percentage of Total Population (2010 US Census data)</b>								
Hispanic	9.2%	15.1%	13.3%	15.3%	47.1%	35.3%	45.3%	25%
Non-Hispanic (NH) White	54.0%	24.2%	27.4%	40.9%	14.5%	11.6%	6.3%	26%
NH Black/African American	22.3%	16.3%	37.5%	19.7%	15.7%	42.5%	40.9%	28%
NH Native American	0.6%	0.5%	0.7%	0.7%	0.6%	0.3%	0.3%	1%
NH Asian American	11.8%	42.1%	18.6%	21.0%	20.4%	7.6%	4.6%	18%
NH Pacific Islander	0.2%	0.3%	0.3%	0.6%	0.5%	0.9%	1.3%	1%
NH Other	0.5%	0.4%	0.5%	0.4%	0.2%	0.2%	0.2%	0%
NH Multi-Race	1.4%	1.2%	1.7%	1.4%	1.0%	1.6%	1.2%	1%
<b>Percentage of Voting Age Population (2010 US Census data)</b>								
Total Voting Age Population (VAP)	49,342	42,168	53,539	43,685	39,399	40,046	39,425	307,604
Hispanic VAP	8.3%	13.0%	12.1%	13.4%	43.1%	31.2%	40.2%	22%
NH White VAP	56.3%	25.9%	30.3%	43.8%	16.9%	13.8%	7.7%	29%
NH Black/African American VAP	21.4%	16.2%	35.4%	19.2%	16.1%	43.9%	44.2%	28%
NH Native American VAP	0.7%	0.5%	0.7%	0.7%	0.6%	0.4%	0.3%	1%
NH Asian American VAP	11.4%	42.7%	19.3%	21.0%	21.7%	8.4%	5.0%	19%
NH Pacific Islander VAP	0.2%	0.3%	0.3%	0.5%	0.5%	0.8%	1.2%	1%
NH Other VAP	0.5%	0.4%	0.4%	0.3%	0.2%	0.2%	0.2%	0%
NH Multi-Race VAP	1.1%	1.0%	1.5%	1.1%	0.8%	1.4%	1.1%	1%
<b>Percentage of Citizen Voting Age Population 2007-2011 Special Tabulation data)</b>								
Total Citizens of Voting Age (CVAP)	34,594	24,891	37,111	31,650	19,114	26,048	23,808	197,216
Hispanic CVAP	7%	10%	8%	8%	21%	16%	19%	12%
NH White CVAP	58%	33%	35%	49%	25%	17%	12%	35%
NH Black/African American CVAP	22%	21%	36%	22%	27%	55%	60%	34%
NH Native American CVAP	0%	0%	0%	0%	0%	0%	0%	0%
NH Asian American CVAP	8%	33%	16%	18%	23%	8%	5%	16%
NH Pacific Islander CVAP	0%	1%	0%	0%	0%	0%	0%	0%
NH Other CVAP	3%	2%	4%	2%	2%	3%	3%	3%
<b>Percentage of Registration and Turnout by Surname (California Statewide Database Nov 2012 data)</b>								
Registered Voters	43,563	26,442	37,534	35,475	19,811	26,774	24,211	213,809
Spanish-Surnamed % of Registration	5%	8%	7%	8%	24%	13%	16%	10%
Asian-Surnamed % of Registration	6%	22%	9%	10%	12%	5%	3%	9%
Filipino-Surnamed % of Registration	1%	1%	1%	1%	1%	1%	1%	1%
Voters Casting Ballots	34,616	18,886	26,898	28,003	13,578	19,229	16,893	158,102
Spanish-Surnamed % of Voters Casting Ballots	5%	8%	7%	8%	22%	12%	14%	9%
Asian-Surnamed % of Voters Casting Ballots	5%	18%	8%	9%	10%	4%	2%	8%
Filipino-Surnamed % of Voters Casting Ballot	1%	1%	1%	1%	1%	1%	1%	1%

## District by District Data





# Council Criteria

**Council adopted the following criteria, in order of priority,  
on June 4, 2013:**

1. Each Council district shall contain a nearly equal number of inhabitants.
2. Council district borders shall be drawn in a manner that complies with the United States Constitution and the Federal Voting Rights Act.
3. Council districts shall respect communities of interest as much as possible.
4. Council districts shall consist of contiguous territory in a reasonably compact form.



## Council Criteria (cont.)

5. Council district borders shall follow visible natural and man-made geographical and topographical features as much as possible.
6. The population and territory of each existing Council district shall be considered when drawing each corresponding new Council district.
7. Districts should avoid displacing any incumbent City Council member or Oakland Unified School District Board member from the district he/she was elected to represent.



# Public Participation

- |                                      |                   |
|--------------------------------------|-------------------|
| 1. Council Adopt Criteria            | 6/4/13            |
| 2. First Round of Public Town Halls  | 7/10/13 – 7/13/13 |
| 3. Initial Map Submission Deadline   | 8/16/13           |
| 4. Second Round of Public Town Halls | 9/5/13 – 9/8/13   |
| 5. City Council Rules Committee      | 10/3/13           |
| 6. Council Hearing                   | 10/15/13          |
| 7. Council Hearing                   | 11/5/13           |
| 8. Target Plan Adoption Date         | 11/19/13          |
| 9. Charter Deadline                  | 12/31/13          |





# 2<sup>nd</sup> Round Forums Schedule

## **Thursday, September 5, 6:30 - 8:30 pm**

Caesar Chavez Education Center, 2825 International Boulevard  
Interpretation services will be provided in *Spanish*.

## **Saturday, September 7, 10:00 am - 12:00 pm**

Frick Middle School, 2845 64th Avenue

## **Saturday, September 7, 2 - 4 pm**

Oakland Public Library, Main Library Auditorium, 125 14th Street  
Interpretation services will be provided in *Cantonese* and *Vietnamese*.

## **Sunday, September 8, 3 - 5 pm**

Claremont Middle School, 5750 College Avenue



# How to Get Involved

- **Town Hall meetings:** Speak during public comment periods
- **City Council Hearings** in October and November
- **Send a letter or email, make a phone call to the Redistricting Hotline**
- **Share and compare views on [Engage Oakland](#)**
- **Follow the website: [www.oaklandnet.com/redistricting](http://www.oaklandnet.com/redistricting)**
- **Draw your own**
  - Draw your neighborhood or community of interest at Engage Oakland
  - Draw your own Council Districts, using the online redistricting system through the Advancement Project software
- **Explore the data**
  - Visit the City's newly launched open data platform, [data.oaklandnet.com](http://data.oaklandnet.com), to explore and visualize population data



# 10 Public Maps Submitted So Far

- “Cohesive Neighborhoods” 1 & 2
- “Socio-Economic” 1 & 2
- Councilmember Brooks
- “Hope 4 Oakland”
- “Socio-Economic Adjusted for Maxwell Park” 1 & 2
- “Fair Representation”
- “Trestle Glen Neighbors”



## Next Steps

1. Consultant's Draft Plans released (this week)
2. 2<sup>nd</sup> Round Town Halls (September 5 – 8)
3. Council Consideration (October and November)