

Superintendent's Report

Measure N Process and Timeline



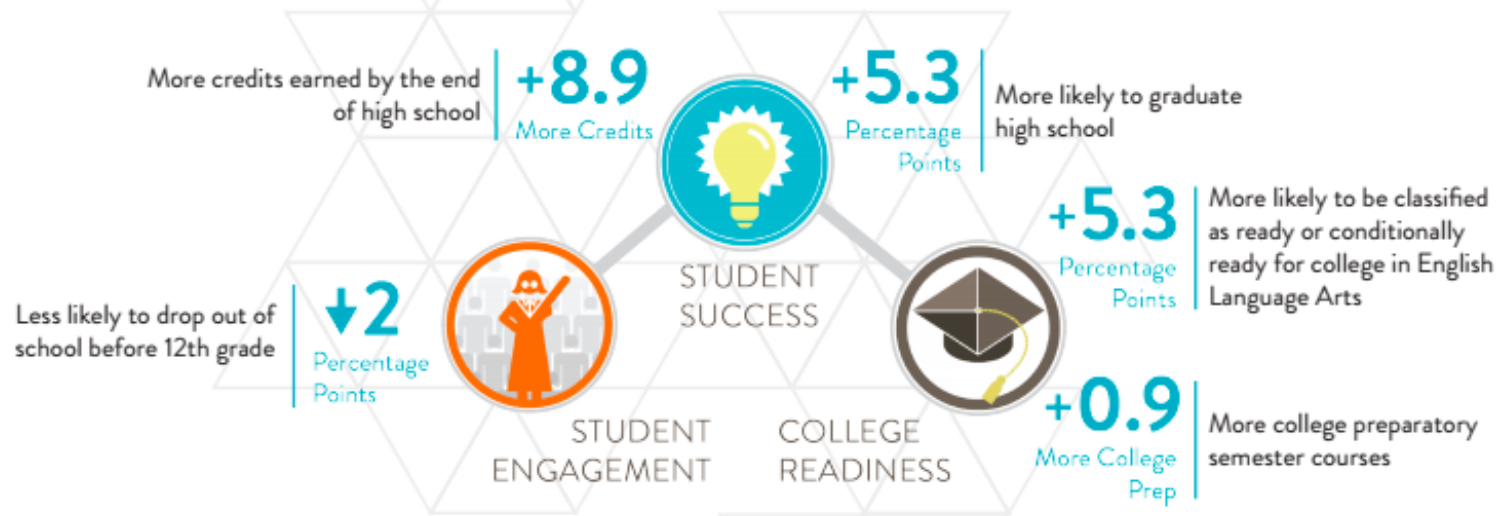
Presented by Kyla Trammel-Johnson, Joanna Vazquez, Preston Thomas and
Rebecca Lacocque

Presented to School Board

January 10th, 2018

When Linked Learning works. . . .

ACADEMIC SUCCESS

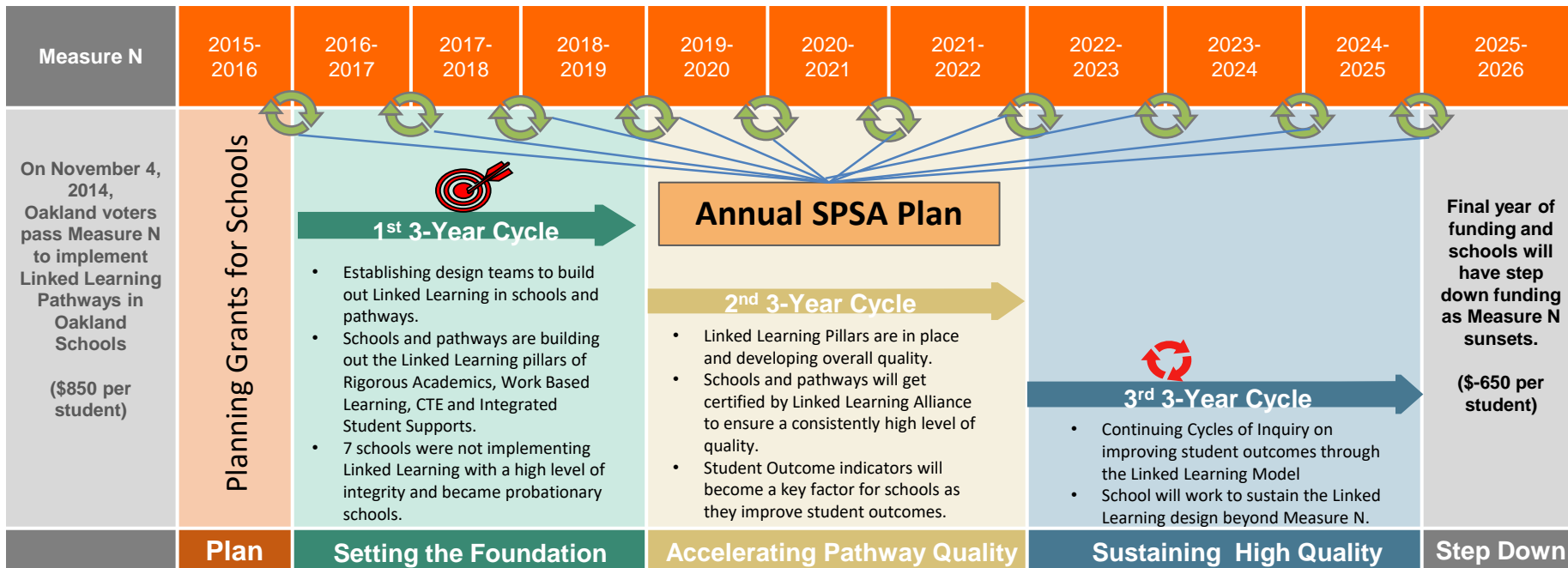


“An evaluation by SRI Education, conducted across seven years through the California Linked Learning District Initiative, shows that Linked Learning’s approach works for all students— and especially for students who are underperforming as they enter high school.”

Measure N 10-year Road Map



Pathways to Excellence 2020 Goals



➔ **Improved Student Outcome Data and Cycles of Improvement** ➔

Aligning Pathway Quality to State Standards



3 Levels of Certification

- **Candidate Level**
 - 6 Required Elements
- **Silver Level**
 - 16 Required Elements, 9 Extra Credit
- **Gold Level**
 - 21 Required Elements, 4 Extra Credit

December 2018: Measure N Milestone

Improved Student Outcome Data and Cycles of Improvement

Linked Learning Pillars	Required Elements of Integrated Program of Study
<p>Career Technical Education</p> <p>&</p> <p>Rigorous Academics</p>	<ul style="list-style-type: none"> <input type="checkbox"/> Complete Program of Study integrating WBL, Literacy, Math, etc) <input type="checkbox"/> College qualifying courses that meet A-G <input type="checkbox"/> Career Theme with CTE sequence or theme-aligned courses <input type="checkbox"/> Standards aligned interdisciplinary units/thematic units in core classes at each grade <ul style="list-style-type: none"> <input type="checkbox"/> CCSS, NGSS, CTE Standards, Pathway Outcomes, and Graduate Profile <input type="checkbox"/> Culminating Experience (Graduate Capstone) <input type="checkbox"/> Student Cohorts with Collaborative Teacher Teams <p><i>Exemplary Programs will include these elements:</i></p> <ul style="list-style-type: none"> <input type="checkbox"/> College Credit and Dual Enrollment Integrated <input type="checkbox"/> Vertical Alignment of Performance Based Assessment <input type="checkbox"/> Industry Validation
<p>Work Based Learning (Must build from 9th through 12th grade)</p>	<ul style="list-style-type: none"> <input type="checkbox"/> Career Awareness integrated into courses <input type="checkbox"/> Career Exploration integrated into courses <input type="checkbox"/> Career Preparation and Internships integrated into courses
<p>Integrated Student Supports</p>	<ul style="list-style-type: none"> <input type="checkbox"/> Differentiated interventions for special populations (EL, AAMA, SPED, etc) <input type="checkbox"/> College and Career Plans <input type="checkbox"/> College Admission and Financial Aid Prep <input type="checkbox"/> Job Application Skills <input type="checkbox"/> Equitable Admissions <input type="checkbox"/> Student Orientation to Pathway Program

Fremont HS: Linked Learning Supporting Oakland

Rigorous Academics

Design and revision process from research to paper to prototype to finished product

Work Based Learning

Partnership with Civic Design Studio / Eastside Arts Alliance for an actual public installation in the community

Career Technical Education

Integrated into CTE sequence via dual enrollment wood technology classes

Integrated Student Supports

SEL support for DREAMers, migrants, newcomers, and people of different languages and backgrounds who contribute to Oakland





Data Tools in OUSD Dashboards



POST SECONDARY READINESS

Multiple data points around college and career readiness for OUSD students.

9th Grade Transitions

- 9th Grade Master Scheduling
- 9th Grade Transition
- High School Readiness - 8th Grade Only
- Middle to High School Enrollment Progress

College Transitions

- A-G Completion - 12th Grade Only
- Advance Placement (AP) Courses and Exams
- Cohort Graduation and Dropout
- College Enrollment
- Dual Enrollment
- SAT Test
- Senior Survey

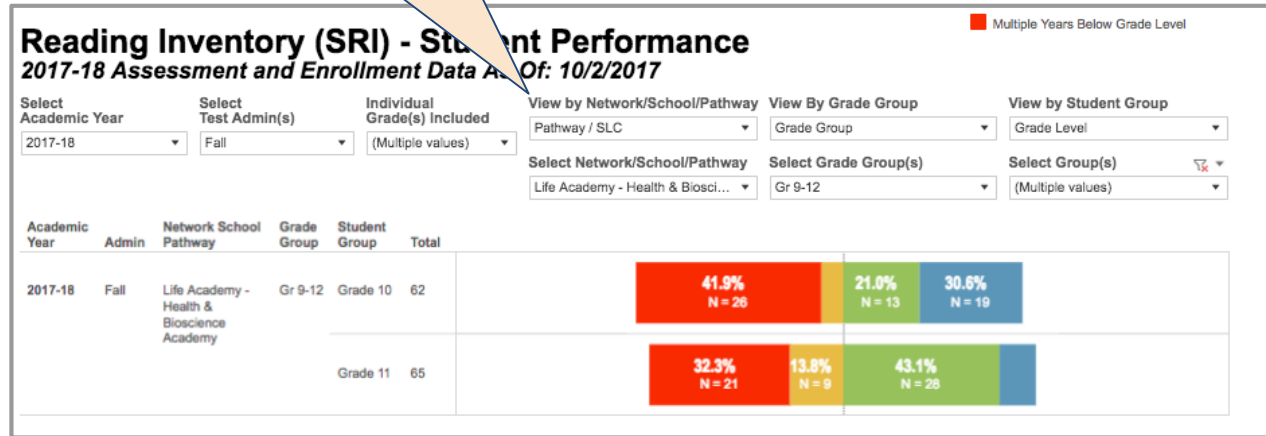
On Track To Graduation

- Early Warning
- Course Grades by Marking Period
- Credits Completed vs. Age of Students
- On Track to Graduation
- Student Graduation Profile

Pathway

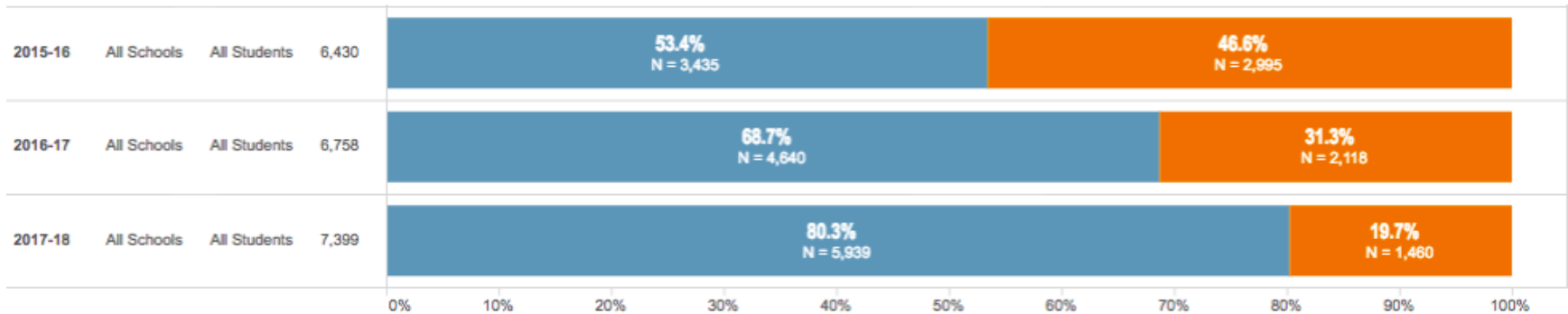
- Pathway Enrollment
- Pathway Performance

Can disaggregate all data by **Linked Learning Pathway**



Current Data on Pathways

“By 2020, the percentage of high school students in Linked Learning Pathways will increase to 80 percent, 100 percent for rising sophomores.”



2017-18 10th Grade:

87.1% of 10th Graders are in Linked Learning Pathways

Overview-Probationary Process



Board Recommendations

Board recommends probationary schools get more intensive supports to implement strategies that support Linked Learning before funding is reduced

Consultations

Sites are provided consultation with staff to review feedback and get an overview of probationary process and expectations

Capacity Building

Sites are required to hire a Linked Learning coach, participate in site leader community of practice, and CMO leadership meetings.

Site Visits and Feedback

Site visits include meetings with students, teachers, administrative teams, and classroom observations.

Final Presentation

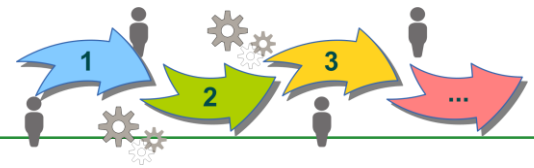
Schools submitted final plans to Measure N Commission and answered key questions regarding their progress and plans for 2018-19

Funding vs Fidelity of Implementation



*Funding that is **NOT** allocated to the school site is held in a school reserve fund for future use to support development when the school is clearer about alignment to Measure N and has a clear direction of the school and pathway.*

Process and Data Reviewed



Probationary Funding Levels

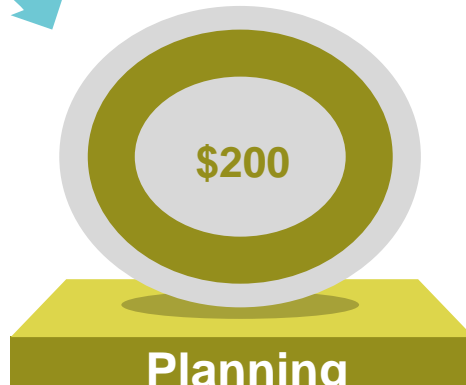
No Funding

No commitment from the school to meet the requirements of Measure N or school is not following through on Measure N Deliverables



Planning

School is still figuring out how to align Linked Learning to the school vision. The school is early in the design phase and has additional design work to complete.



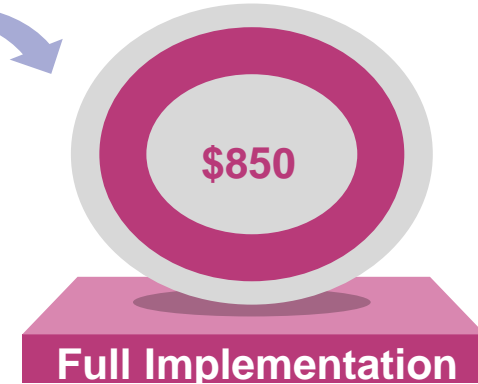
Piloting

School is actively building out key elements of Linked Learning but may be piloting in some areas to prove a concept or create buy-in.



4 Elements

School is actively implementing Linked Learning and has built out including all 4 elements of Linked Learning.



Overview-Probationary Process



Board Recommendations

Board recommends probationary schools get more intensive supports to implement strategies that support Linked Learning before funding is reduced

Consultations

Sites are provided consultation with staff to review feedback and get an overview of probationary process and expectations

Capacity Building

Sites are required to hire a Linked Learning coach, participate in site leader community of practice, and CMO leadership meetings.

Site Visits and Feedback

Site visits include meetings with students, teachers, administrative teams, and classroom observations.

Final Presentation

Schools submitted final plans to Measure N Commission and answered key questions regarding their progress and plans for 2018-19

: iam OUSD  .



**OAKLAND UNIFIED
SCHOOL DISTRICT**
Community Schools, Thriving Students

1000 Broadway, Suite 680, Oakland, CA 94607

www.ousd.org



@OUSDnews