



OAKLAND UNIFIED  
SCHOOL DISTRICT

*Community Schools,  
Thriving Students*



# Oakland Unified School District

## 2012-2013 Enrollment Presentation v11

**November 14, 2012**

**Presented by:**

Tony Smith, Ph.D., Superintendent of Oakland Unified School District

David Montes de Oca, Executive Director of Quality Community Schools Development

# OVERVIEW

**PART I:**

**Trends : Results**

**PART II:**

**Initiatives** (*Expanding Grades, STEM, Transitional Kinder*)

**PART III:**

**Restructuring**

**PART IV:**

**District – Charter Enrollment Dynamic**

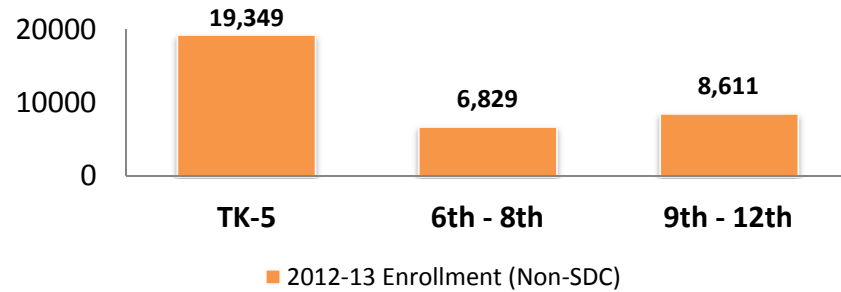
**PART V:**

**Enrollment Projections**

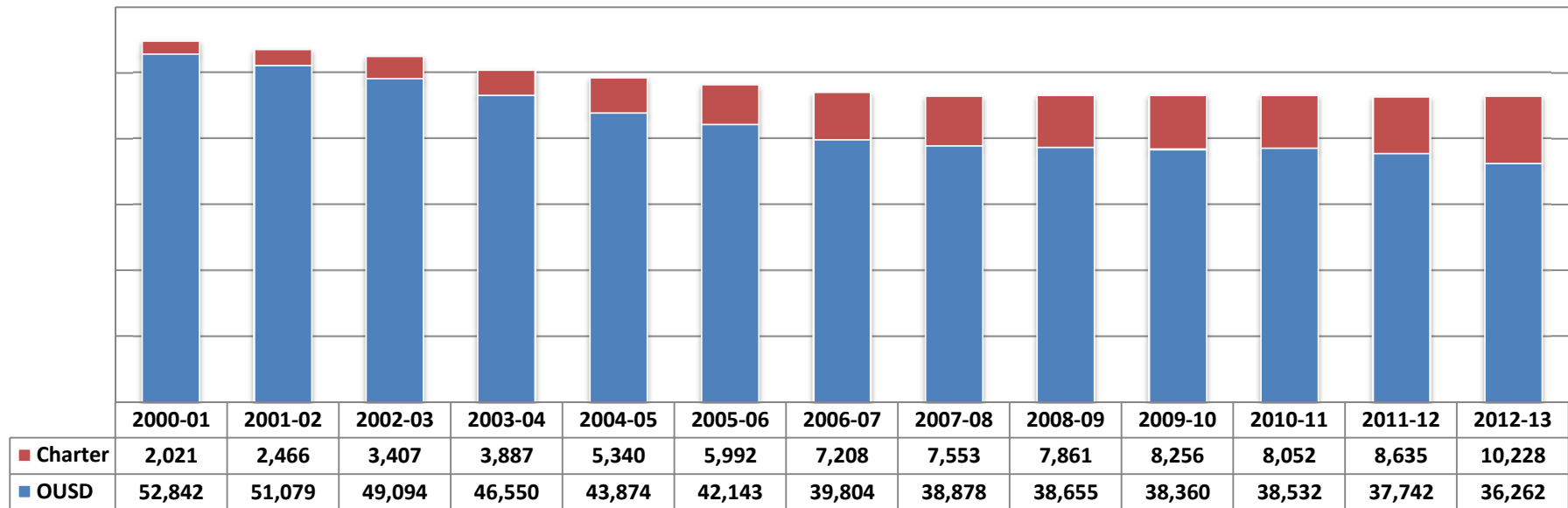
# PART I: TRENDS : RESULTS

What is the enrollment\* of the Oakland Unified School District this year?

Total Non-SDC: 34,789  
 Total SDC: 1,473  
**Total w/ SDC: 36,262**



## District & OUSD Authorized Charter Enrollment Over-Time



\* Enrollment Data 2012-13: **September 24, 2012** referred to as the **Day 20 Count**  
 2000-2001 through 2011-12 Enrollment based on – **CBEDS Reporting** (Includes SDC)

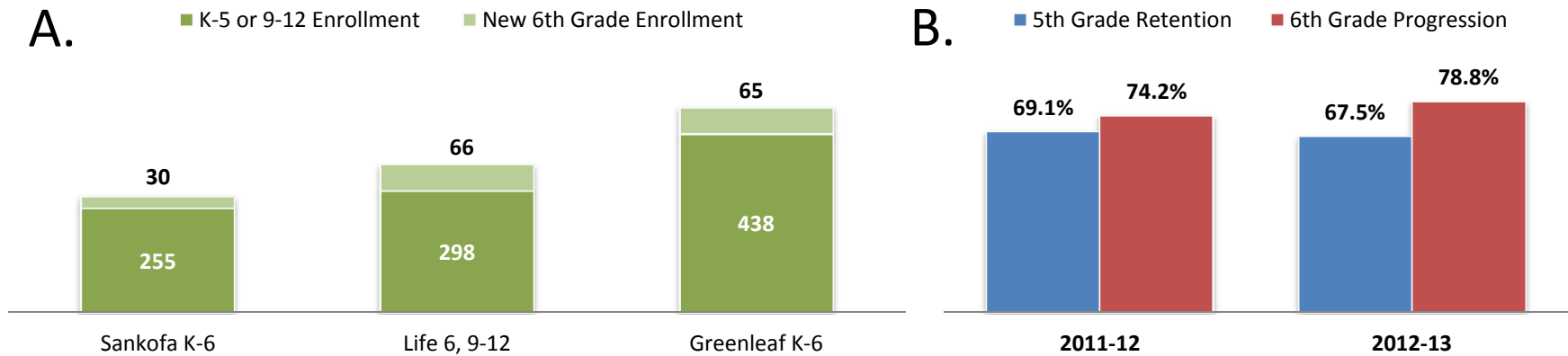
\*\* Note: Charter data is OUSD Authorized Charters ONLY, based on historical data record.

## PART II: District Initiatives: Expanding Grades, STEM

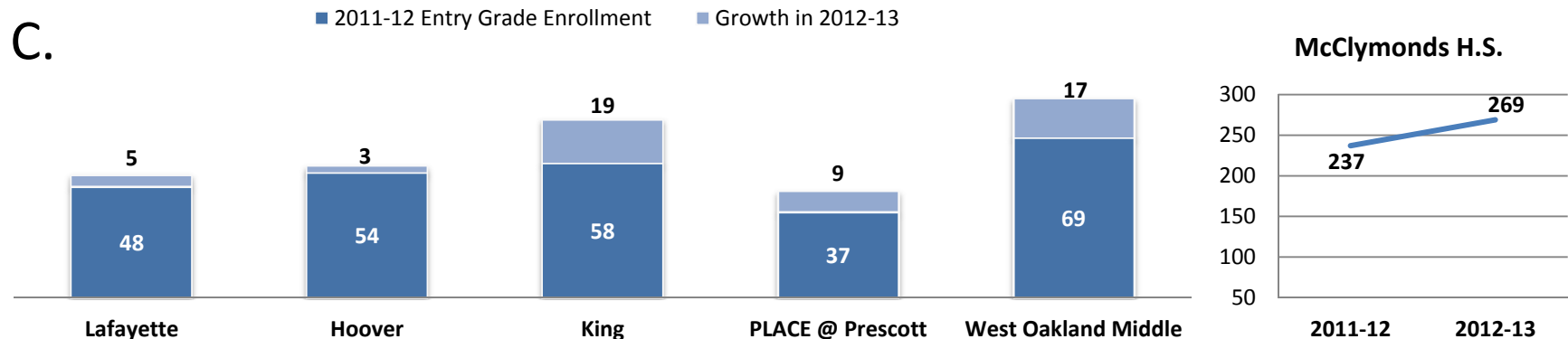
**Graph A:** All schools approved for **grade level expansion** met or exceeded 2012-13 enrollment targets for 6<sup>th</sup> grade.

**Graph B:** Over past two years an increasing number of 6<sup>th</sup> grade students new to OUSD helps off-set the ongoing decline in retention of 5<sup>th</sup> grade students within OUSD transitioning to 6<sup>th</sup> grade.

- **5<sup>th</sup> Grade Retention** = % of District 5<sup>th</sup> graders that remain in District for the following 6<sup>th</sup> grade year.
- **6<sup>th</sup> Grade Progression** = ratio of District 6<sup>th</sup> grade class compared to prior year District 5<sup>th</sup> grade class.



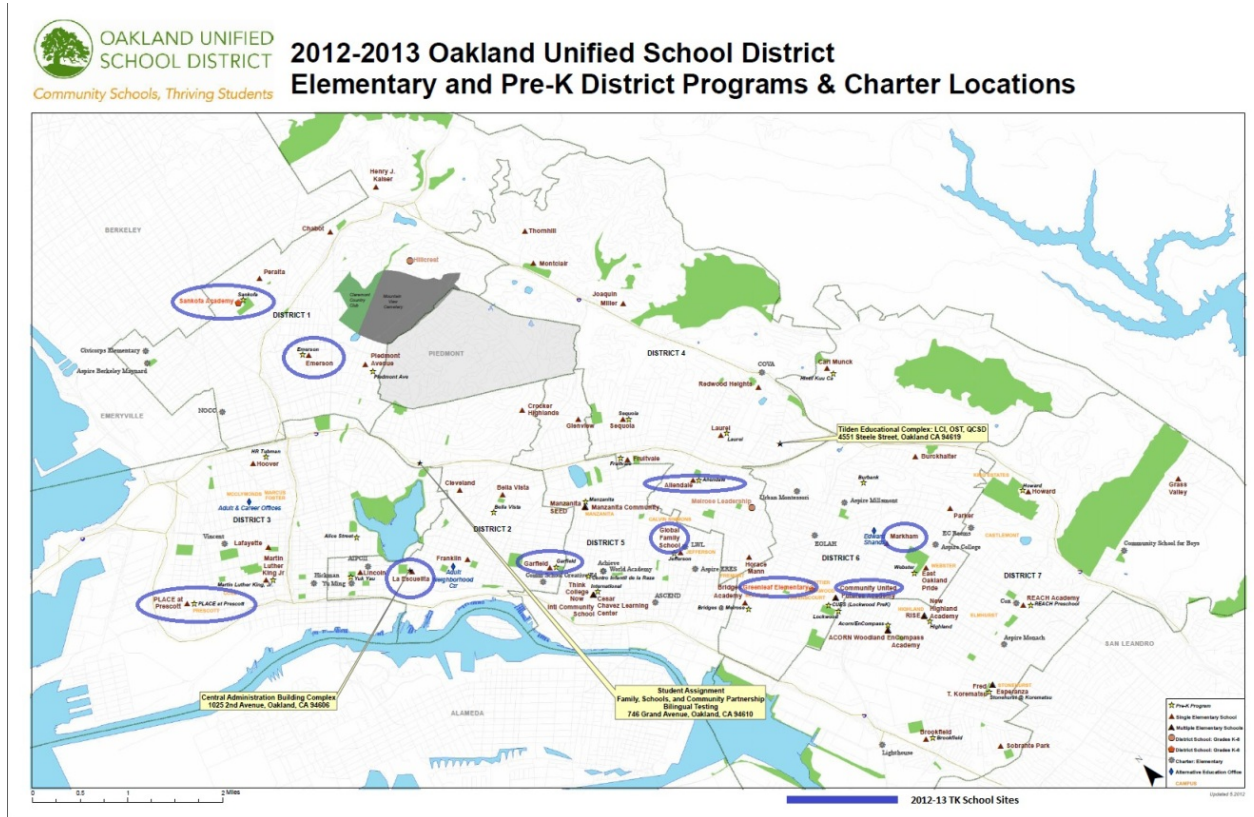
All West Oakland **STEM Corridor Schools** serving grades K-8 experienced an increase in Entry Grade Enrollment (K, 6) for 2012-13. Additionally, **McClymonds High School** experienced **10.1% increase** in enrollment school-wide.



\* Data Used: 2011-12 & 2012-13 based on **Day 20 Count**

# PART II: District Initiatives: Transitional Kindergarten

*Transitional Kindergarten enables OUSD to continue serving over 200 students affected by California's new Kindergarten age requirements, while also supporting our youngest students' developmental growth and preparedness for traditional Kindergarten.*



2012-13 Sites	TK Enroll
<b>Region 1</b>	
Emerson	21
PLACE @ Prescott	8
Sankofa	10
<b>Region 2</b>	
Allendale	23
Garfield	42
Global	25
La Escuelita	23
<b>Region 3</b>	
Community United	23
Greenleaf	17
Markham	22
<b>TOTAL</b>	<b>214</b>

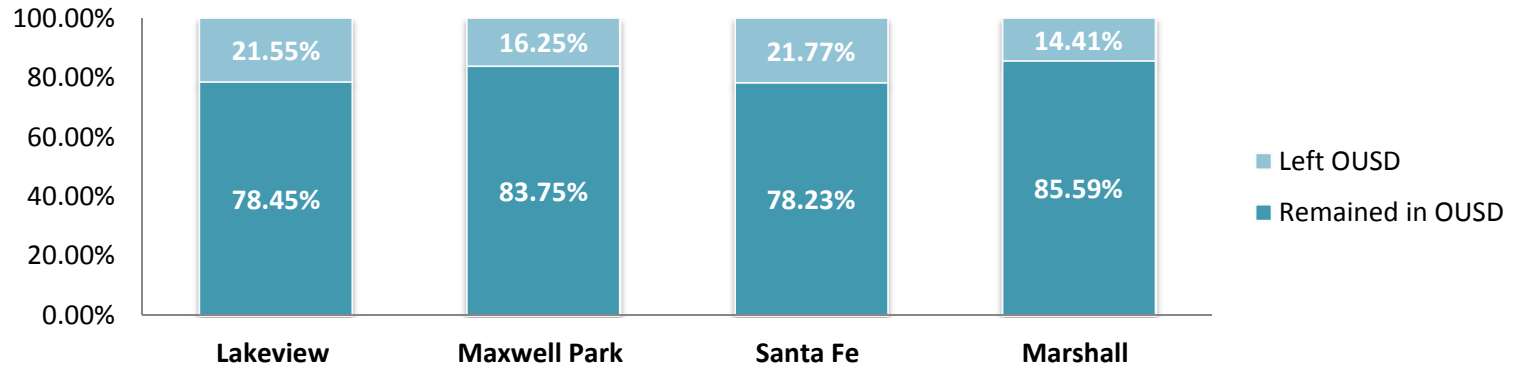
## 2013-14 Sites to be Added

Region 1	Region 2	Region 3
Hoover	Bella Vista	Grass Valley
Sequoia	Bridges	Parker
	Horace Mann	Reach
	Manzanita SEED	Sobrante Park

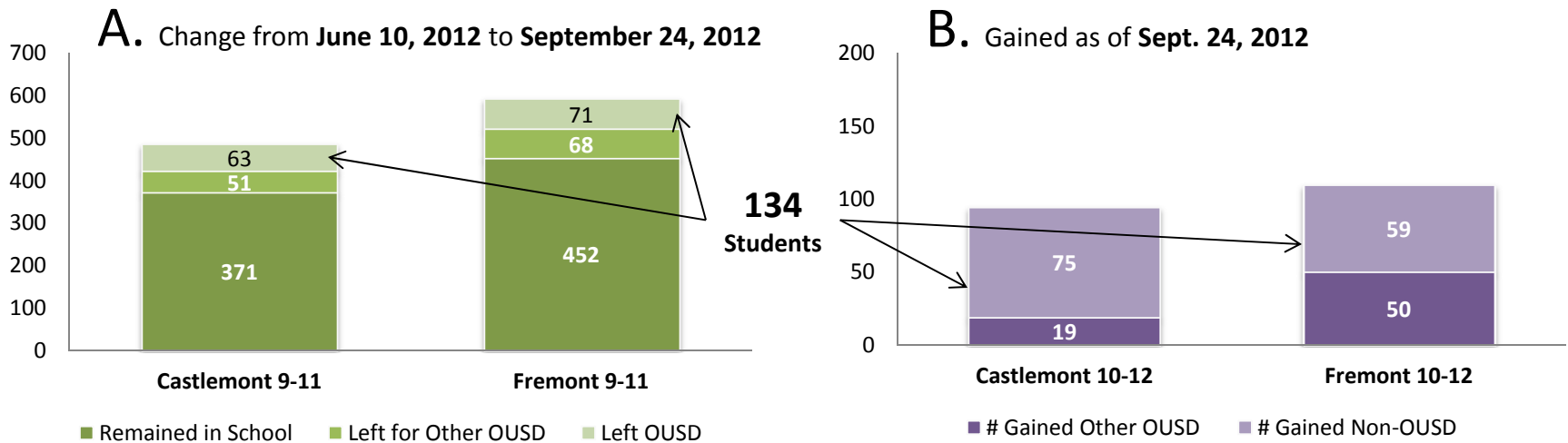
## PART III: Restructuring

Percent of student loss from **closed elementary schools** is slightly lower than national average closure loss (20%). Total student loss represents small portion of total enrollment loss for OUSD in 2012-13.

**Remained in OUSD: 508 (81.02%) Left OUSD: 119 (18.98%)**



**Consolidated High Schools** gained as many students into OUSD at grades 10-12 as was lost from OUSD at 9-11.

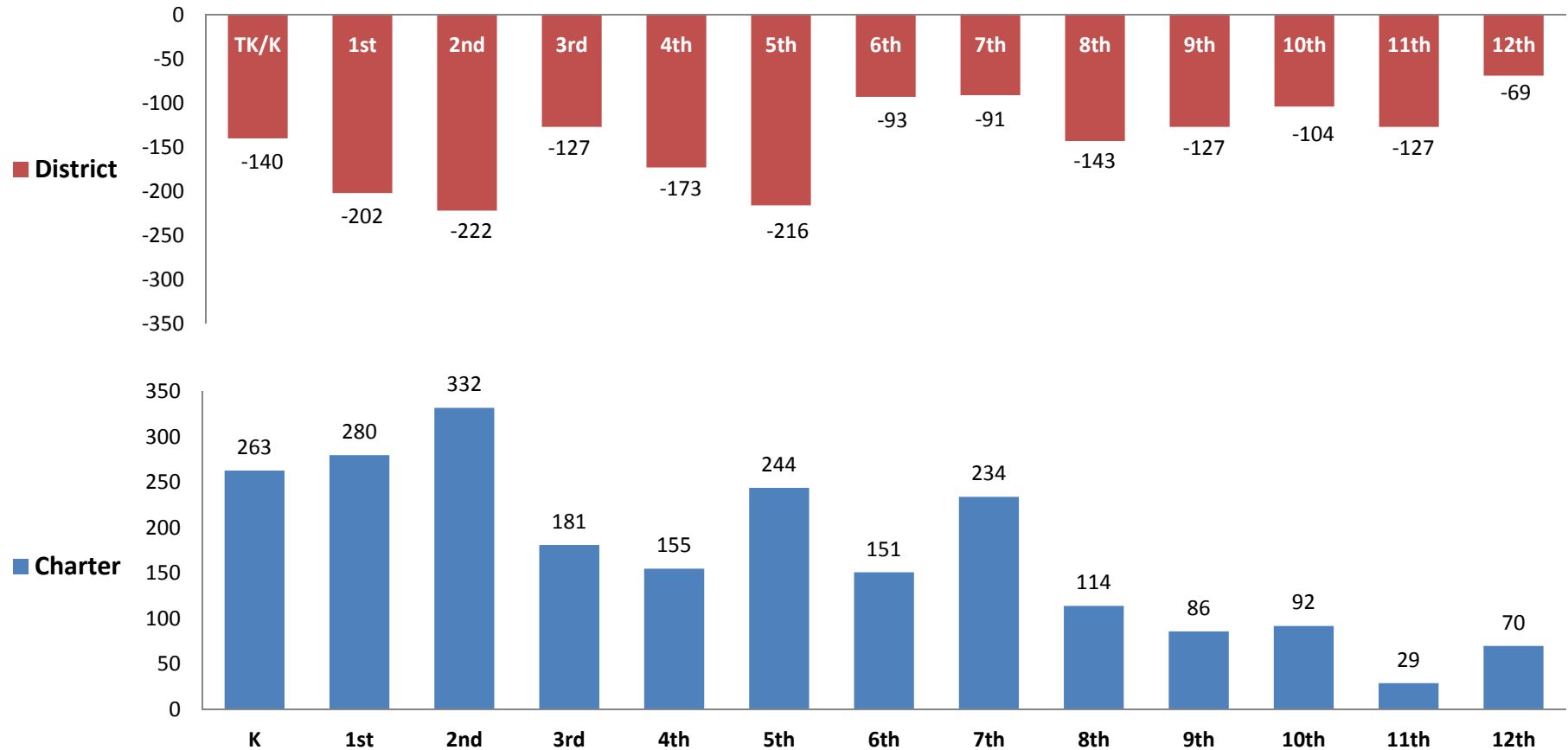


\* Data Used: Comparison based on Aeries SIS Loss / Gain between **June 10, 2012** and **September 24, 2012**

## PART IV: District and Charter Enrollment Dynamic

Comparison between 2011-12 and 2012-13 District and charter school enrollment change.

Most of the District enrollment losses\* can be accounted for by gains in charter schools\*\* with the exception of a few grade levels, particularly at secondary.



\* Data Used: The **Day 20 Count** 2011 and 2012

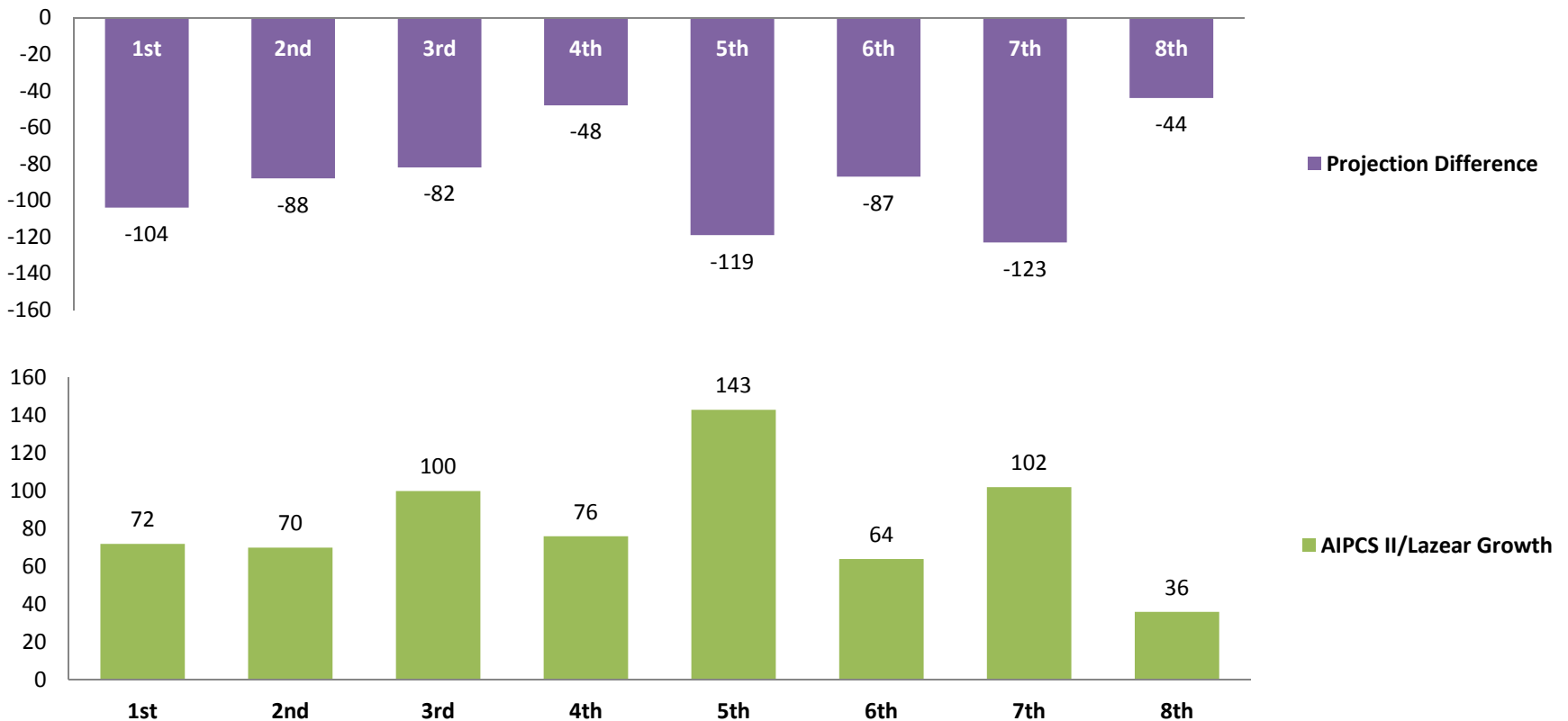
\*\* Based on **attendance accounting** reported September, 2011 and September, 2012.

## PART V: Enrollment Projections

*Timing of program changes has implications for Enrollment Projections. Decisions made after February impact budgets, staffing and fall consolidations; because they are driven by enrollment projections.*

**EXAMPLE:**

- 2012-13\* Grades 1<sup>st</sup> – 8<sup>th</sup> Enrollment projection difference: **695**
- 2012-13\*\* Grades 1<sup>st</sup> – 8<sup>th</sup> Enrollment change based on AIPCS II Renewal/Expansion (OUSD) & Lazear Charter Conversion (ACOE): **663**



\* Date Used: The **Day 20 Count** 2012

\*\* Based on **attendance accounting** reported September, 2011 and September, 2012.



# Questions & Discussion