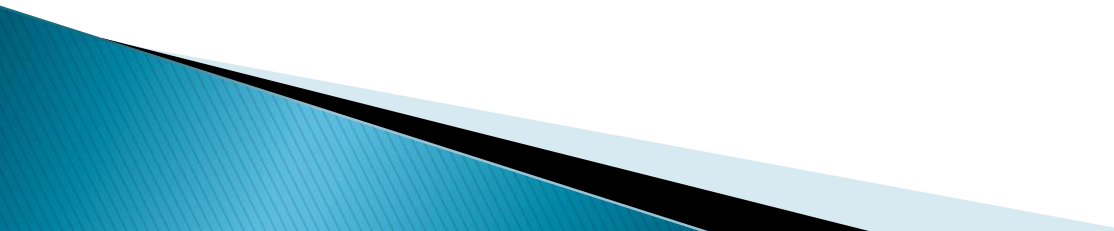


# Life Academy's Tumultuous Future

Presented to: The Life Academy Community & the Oakland  
School Board

From: The Life Academy Staff (excluding Administrators)


# The Purpose of this Presentation:

1. We urge you NOT to make rash decisions that will affect approximately 250 already under-served Oakland youth & their families.
  2. We urge you to consider other **creative options** that will allow Life Academy to stay in the community.
- 

# Our Reasoning:

- ▶ There is no need to make a rash, immediate decision.
  - The School Board is *still* liable for any issues that come up this year
  - There is *still* time to consider other options and be exhaustive in our consideration.

# Carter is not a viable option for Life Academy for 3 main reasons:

1. **SPACE:** Carter does not offer enough classrooms for our student population.
  2. **INSTABILITY:** Moving to Carter will offer more instability for our students and no long term resolutions.
  3. **LOCATION:** The location of Carter will ensure that Life Academy students will no longer be a part of our school.
- 

# SPACE

- ▶ After removing three portables for the “Field of Dreams” project, Carter will have **nine** available classrooms and possibly 1–2 portables.
- ▶ Life Academy needs at least 14 classrooms
  - (this does not account for Admin. Offices, the College Center, counseling offices, special ed. centers, & other support staff space ie. afterschool coordinator office, & the two computer labs)

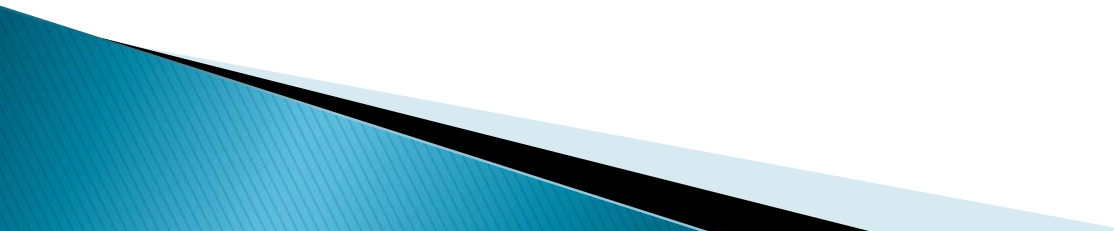
# INSTABILITY

- ▶ Moving more than once causes instability
  - With this resolution, we will be moved, uprooted, & displaced at least 3 times:
    - Life to Carter
    - Carter to Unknown
    - Unknown to Life
- ▶ For each move, Life Academy will loose approximately 30% of its students (conservative estimate).

# LOCATION

- ▶ Carter is not in the San Antonio District
  - 6.5 miles away by car
- ▶ It takes approx. 25 minutes by AC transit
- ▶ Students will move to other schools.
  - OUSD will lose students & ADA.
  - 25% surveyed will move (private, charter, another district)

# Where will our students move?

- ▶ Possible new schools:
    - San Leandro High School
    - ASPIRE
    - Lionel Wilson
    - Lighthouse
    - Oakland Military Institute
    - Oakland School of the Arts
  
  - ▶ ALL these schools are OUTSIDE the District!
- 



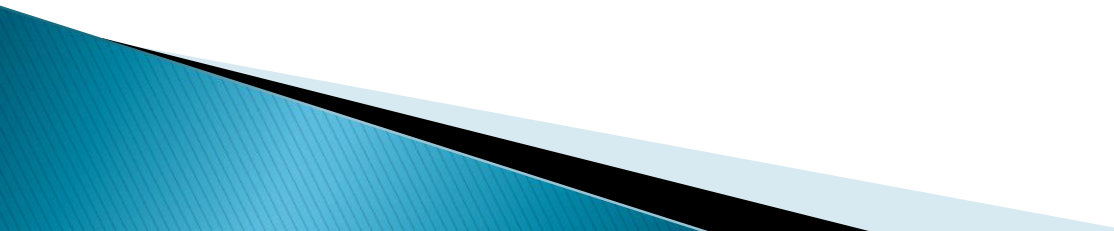
# Why keep Life Academy in the San Antonio District?

- ▶ Life Academy is the ONLY high school in the Lower San Antonio District
- ▶ Elementary and middle school students are looking for a high school in their neighborhood.
- ▶ Life Academy has strong relationships w/ feeder schools:
  - ASCEND, Think College Now, Roosevelt, International Community School, UPA

# The Misdirection of OUSD

- ▶ District continues to manage this poorly
  - Lack of community involvement & input
  - Lack of exploration of other options
  - Poor communication
  - Lack of a clear process (no inspection, decision-making process)
  - Short amount of time to make this decision

# Possible Solutions

1. San Antonio Park
  2. Jack London Center/Area
  3. Near Garfield's Campus
  4. Life Academy's Current Site
  5. Near the Cesar Chavez complex
- 

An aerial satellite photograph of San Antonio Park. The park features a large rectangular pool in the upper center, a basketball court to the left, and a smaller circular pool to the right. A paved road runs along the left side, and residential streets are visible on the right. A blue callout box with white text is positioned in the lower-middle part of the image. At the bottom, there is a metadata bar with coordinates, elevation, date, and eye altitude.

LIFE Academy  
San Antonio Park

© 2008 Tele Atlas

37°47'24.42" N 122°14'25.77" W

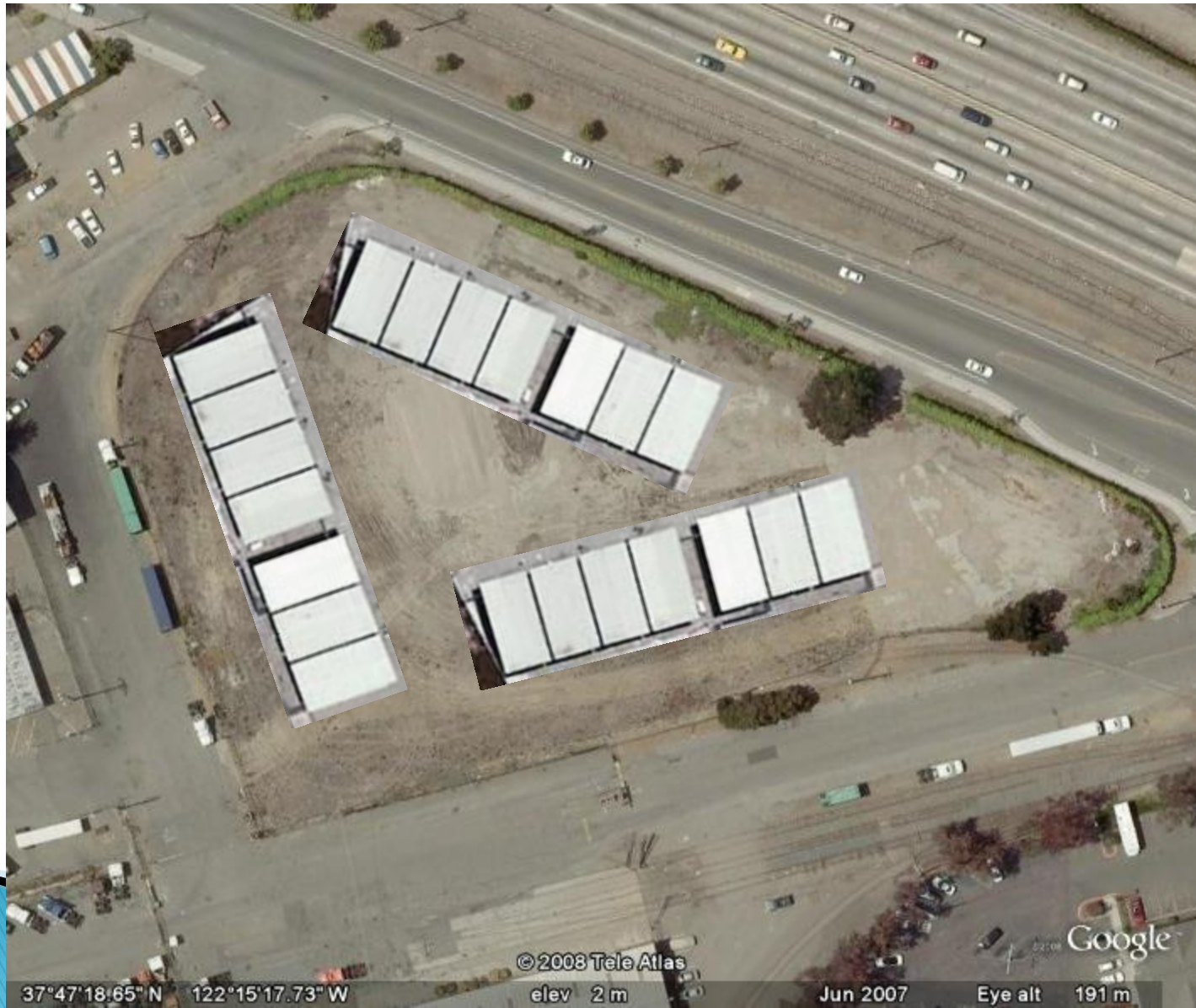
elev 85 ft

Jun 2007

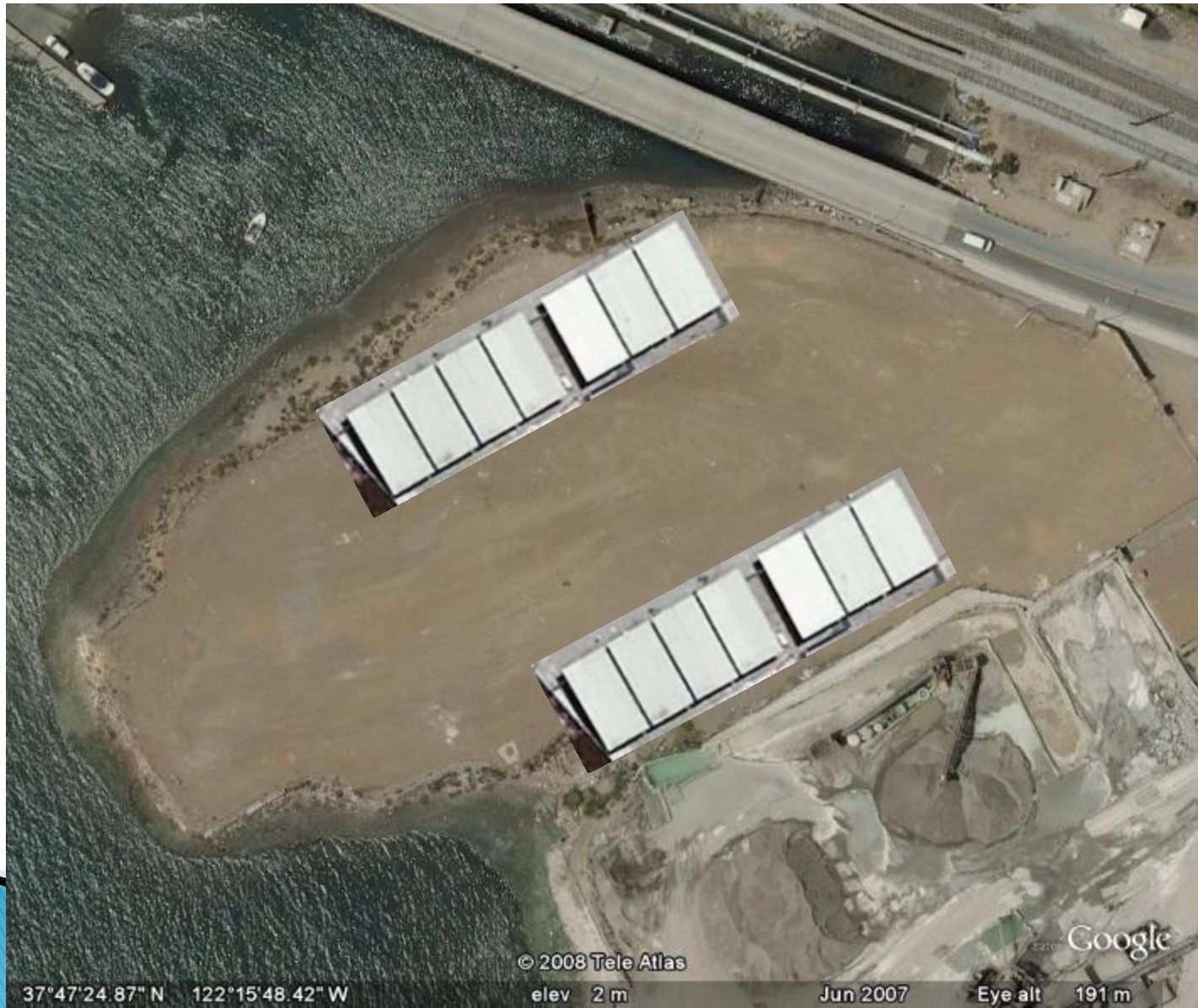
Eye alt 886 ft

Google

# *Jack London Aquatic Center – 10<sup>th</sup> & Embarcadero*



# Across Jack London Aquatic Center



37°47'24.87" N 122°15'48.42" W

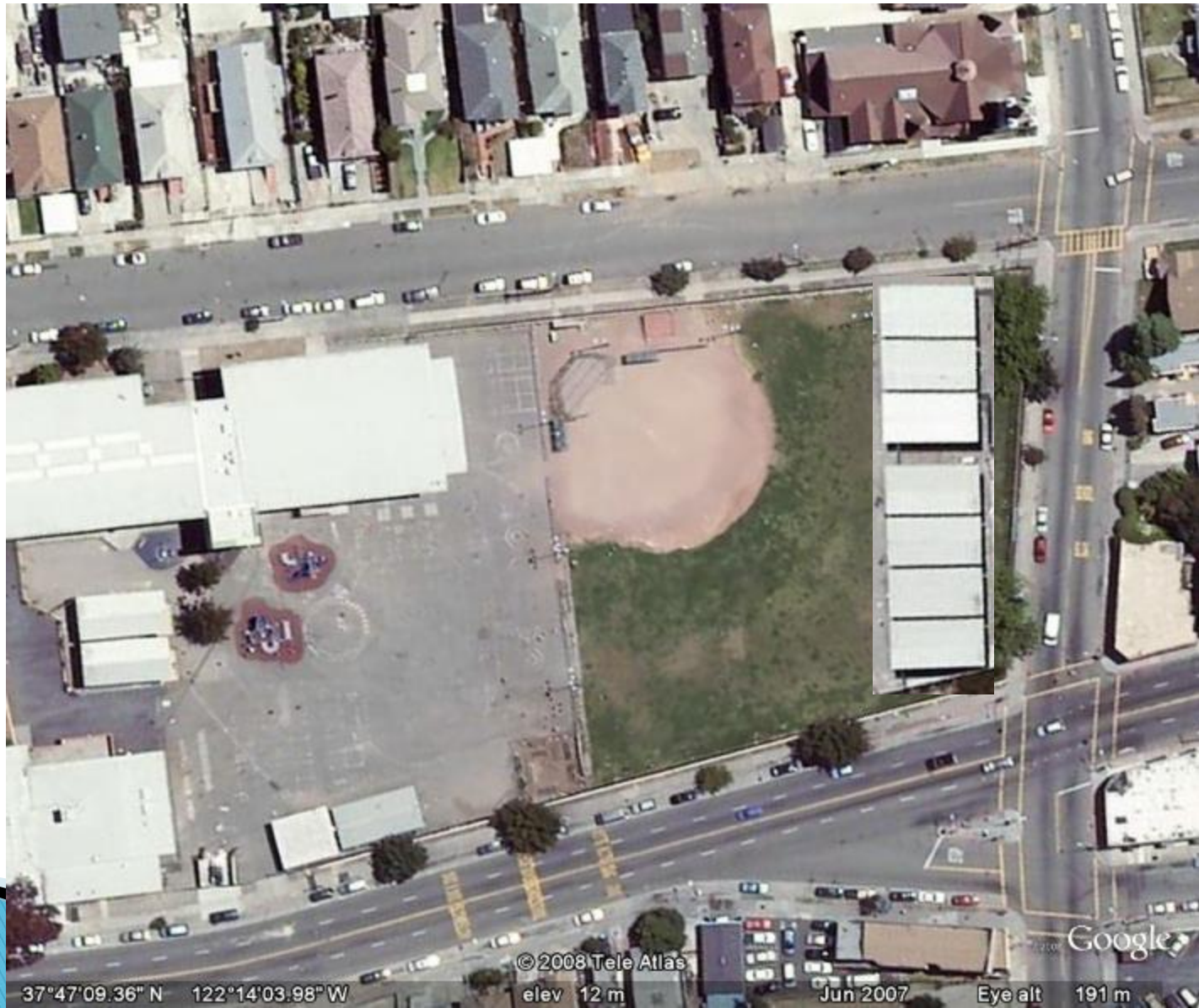
© 2008 Tele Atlas

elev 2 m

Jun 2007

Eye alt 191 m

# Garfield Elementary



37°47'09.36" N 122°14'03.98" W

© 2008 Tele Atlas

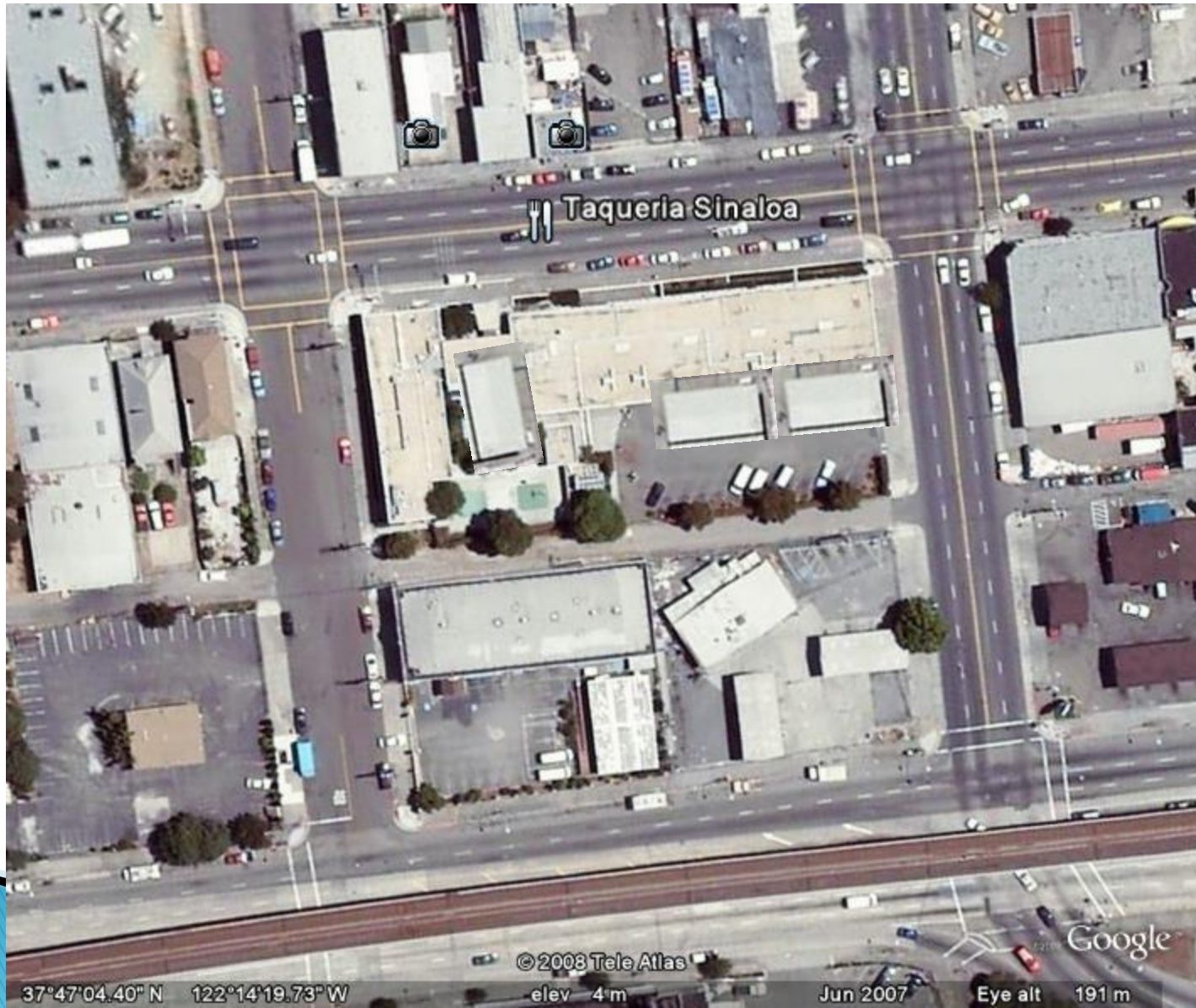
elev 12 m

Jun 2007

Eye alt

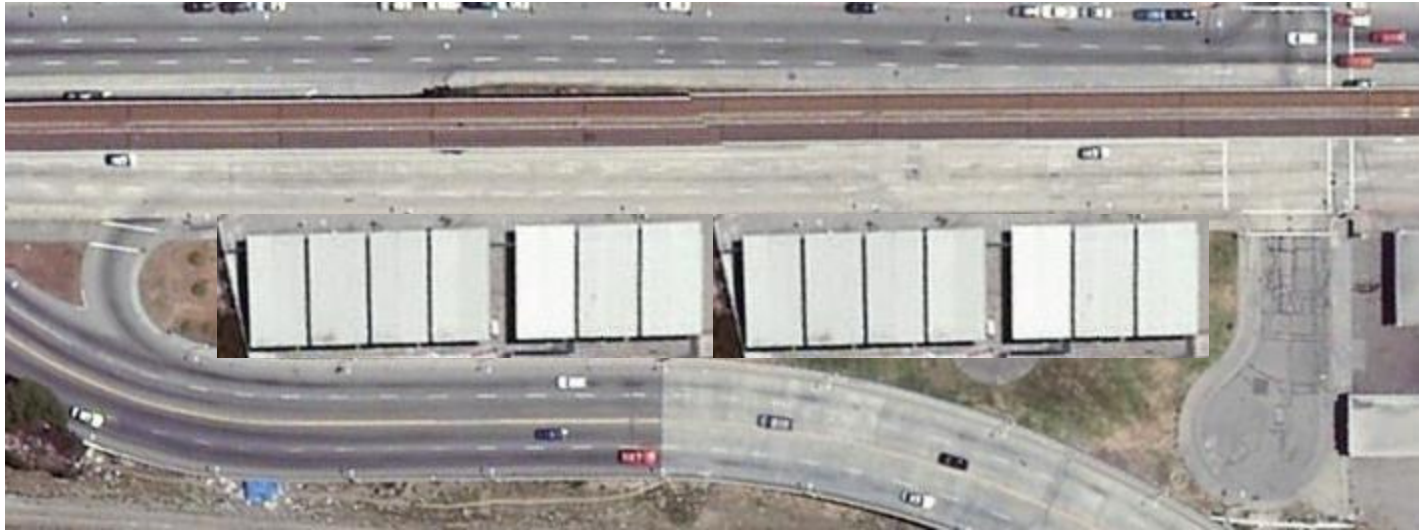
191 m

# *Life Academy's Current Site:*

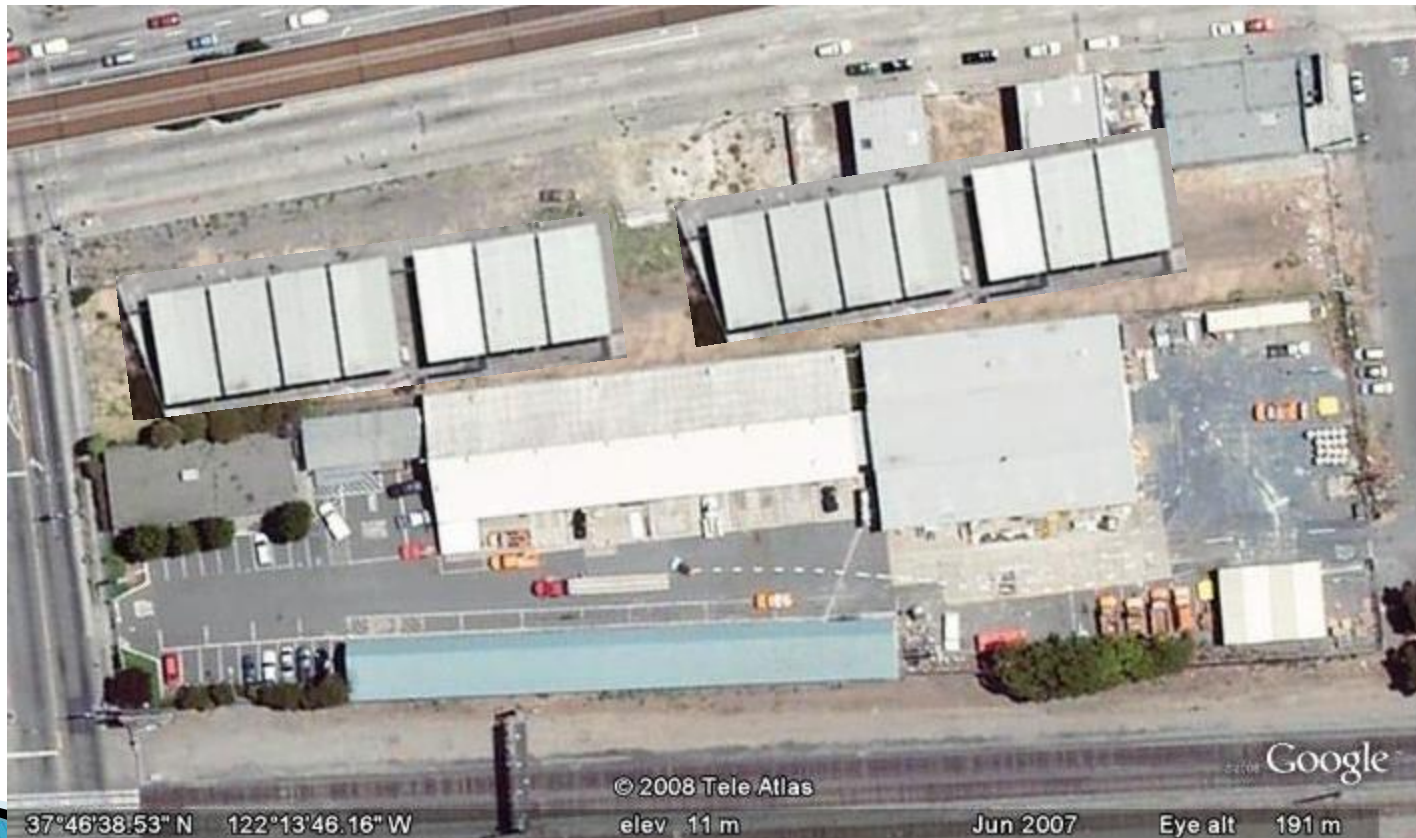




# Across from LIFE Academy



# Across from Cesar Chavez Complex



# We would like to reiterate the following:

1. We urge the member of the OUSD Board **NOT** to make **rash decisions** that will affect approximately 250 already under-served Oakland youth & their families of the Lower San Antonio District.
2. Instead, we urge you to consider other **creative options** that will allow Life Academy to stay in the community.
3. Thank you for your **consideration**.