

2018-19 Probationary Schools Update



Presented by Preston Thomas and Joanna Vazquez Zelaya

Presented to Measure N Commission

October 16, 2018

Overview-Probationary Process



Board Recommendations

Board recommends probationary schools get more intensive supports to implement strategies that support Linked Learning before funding is reduced

Consultations

Sites are provided consultation with staff to review feedback and get an overview of probationary process and expectations

Capacity Building

Sites are required to hire a Linked Learning coach, participate in site leader community of practice, and CMO leadership meetings.

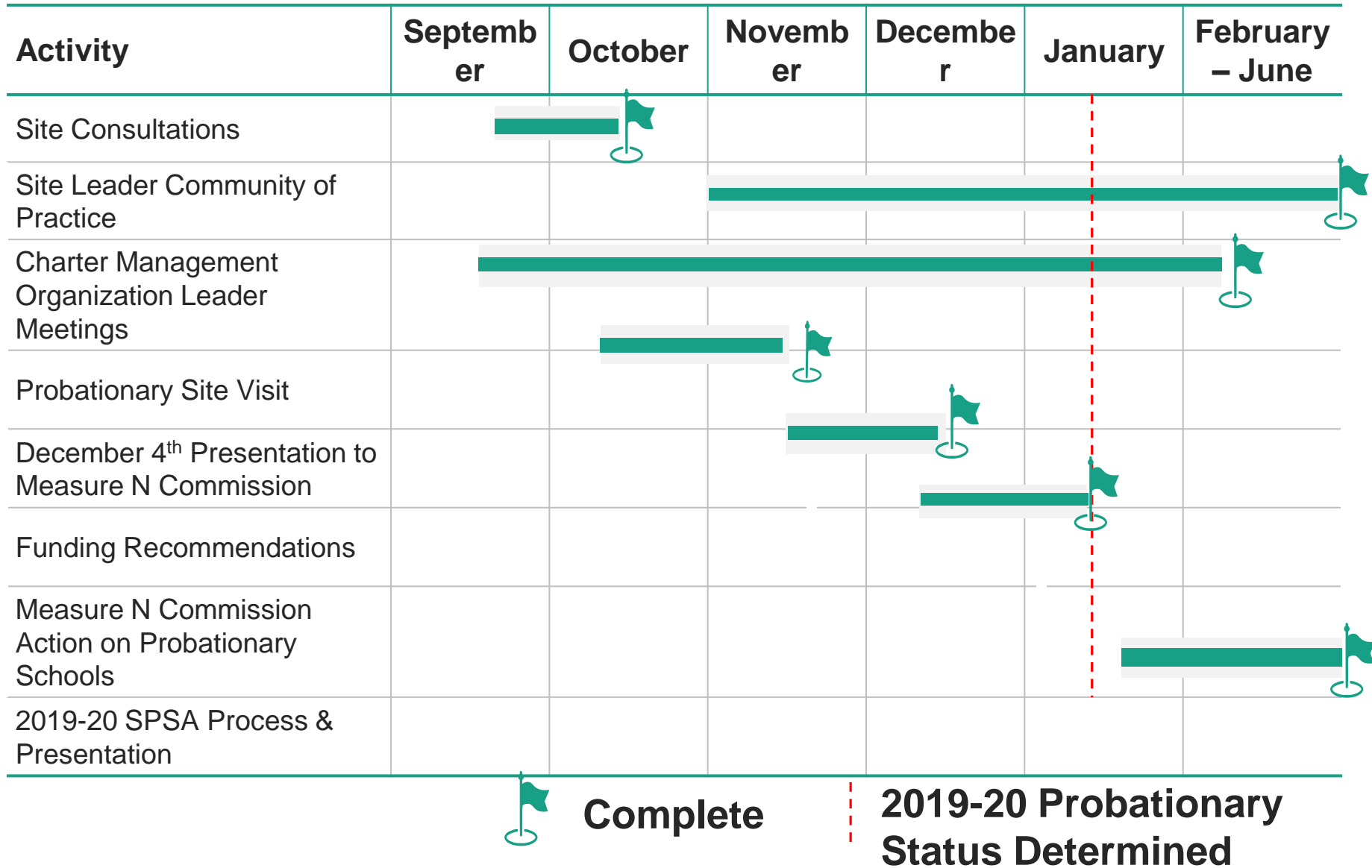
Site Visits and Feedback

Site visits include meetings with students, teachers, administrative teams, and classroom observations.

Final Presentation

Schools will submit final plans to Measure N Commission and answer key questions regarding their progress and plans for 2019-20

2018-19 Probationary Timeline



2018-19 Probationary Schools

School	2018-19 Funding	Year of Probationary Status
ARISE	\$525 per pupil	2nd
East Bay Innovation Academy	\$525 per pupil	2nd
Aspire Lionel Wilson Prep	\$525 per pupil	2nd
Unity	\$525 per pupil	2nd
Aspire Golden State Prep	\$850 per pupil	2nd
Lighthouse	\$850 per pupil	2nd
McClymonds	\$850 per pupil	2nd
Oakland School for the Arts	\$850 per pupil	1st
Skyline	\$850 per pupil	1st

Capacity Building: Consultations

School	Date of Consultation
ARISE	September 21st
East Bay Innovation Academy	September 25th
Aspire Lionel Wilson Prep	September 19th
Unity	September 25th
Aspire Golden State Prep	September 24th
Lighthouse	September 21st
McClymonds	Date to be finalized
Oakland School for the Arts	October 8th
Skyline	October 25th

Capacity Building: ConnectEd Community of Practice



Current Status:

- Finalizing partnership with ConnectEd and dates for Community of Practice with ConnectEd

- All Probationary Schools have been informed of this status

Capacity Building: Charter Management Organization Leader Meetings

Current Status:

- Positive feedback provide by CMO leaders who attended last year
- CMO leaders shared that these meetings helped their organization feel more coherent and understand Linked Learning across the levels of the organization
- This year CMO Leader Meetings are held quarterly and are required for all charter schools receiving Measure N funds regardless of probationary status

Capacity Building: Charter Management Organization Leader Meetings Schedule

School	September 13th	December 13th	February 14th	April 11th
ARISE	Excused			
East Bay Innovation Academy				
Aspire Lionel Wilson Prep	✓			
Unity	✓			
Aspire Golden State Prep	✓			
Lighthouse	✓			
Oakland School for the Arts	✓			
McClymonds	N/A			
Skyline	N/A			

Overview of Probationary School Site Visit

Year 1 Probationary Status,
Year 2 Probationary Status with reduced
2018-19 Measure N allocation

Total time of 3 hours

- 30 minute Presentation
- 1 hour Classroom Observations
- 30 minute Student Panel Interviews
- 30 minute Teacher Panel Interviews
- 30 minute Site Visit Debrief

Year 2 Probationary Status with full 2018-
19 Measure N allocation

Total time of 2 hours

- 30 minute Presentation
- 1 hour Classroom Observations
- 30 minute Site Visit Debrief

Probationary School Site Visit Schedule

School	Date & Time of Site Visit
Oakland School for the Arts	October 17th @ 12pm - 3pm
Skyline	October 24th @ 11:30am - 3pm
McClymonds	October 31st @ 9:15am - 11:15am
Aspire Golden State Prep	November 5th @ Time TBD
Aspire Lionel Wilson Prep	November 6th @ Time TBD
Lighthouse	November 7th @ Time TBD
Unity	November 8th @ 8:45am -12pm
East Bay Innovation Academy	November 13th @ Time TBD
ARISE	November 14th @ Time TBD

Probationary School Presentation

Deliverables

- 2 page written reflection that answered the following questions:
 - A pattern observed across all of our probationary schools is that there was a clear gap in knowledge of Linked Learning. In order to be successful, what will your school do to ensure all stakeholders deeply understand Linked Learning?
 - Based on the feedback you received in the Spring of 2018, the fall site visit, participation in Charter Management Organization Leader meetings, and the Principal CoP, how have you adjusted the overall vision and program to align to Measure N?
 - Linked Learning Pathways are built upon four pillars: Academic Rigor, Career Technical Education, Work-Based Learning, and Integrated Student Supports; which of the pillars have you focused on to more fully develop your school's program in alignment with Measure N?
 - What are the changes you are making to the design of your school in master schedule and staffing to support the implementation of a Linked Learning pathway?
 - In a year from now, how will your school be dramatically different than the current design?
- Documents submitted
 - Updated Program of Study
 - A sample budget for the 2019-20 school year
 - Master Schedule changes that will be made for the 2019-20 school year

Presentation

- Question and answer session with staff and Commissioners

EVERY STUDENT THRIVES!



**OAKLAND UNIFIED
SCHOOL DISTRICT**

Community Schools, Thriving Students

1000 Broadway, Suite 680, Oakland, CA 94607

www.ousd.org



@OUSDnews

Contact us for additional information [optional contact area]
Phone: 510.555.5555 | Email: info@ousd.org