



ASCEND

An Arts Integrated EL Education TK-8 School

Who We Are



Grades Served: TK-8

Location: Fruitvale (East 12th between 38th & 39th Avenues)

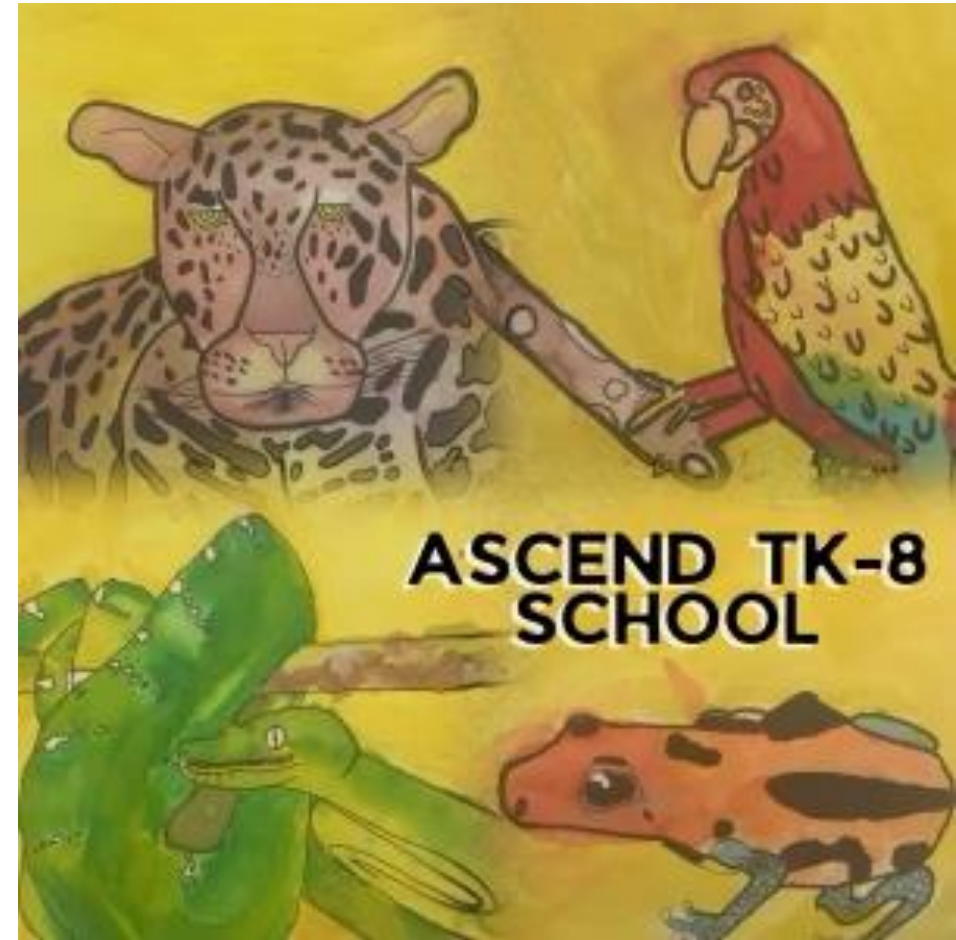
The vision of ASCEND is to nurture a passion for learning and cultivate personal agency in order to discover who we are, what we need and how to advocate for it. Together, our community of students, families and staff explores, learns and grows through success and failure. Diverse learners thrive through an approach that develops the whole individual, which includes arts-integration, expeditionary learning, personalization, and a focus on social and emotional growth. Through a common vision guided by love, we empower each other to forge our own paths and to create a school that reflects the world we want.

Who We Are: Educational Philosophy

As an EL school, we believe that learning should be:

- challenging
- active
- meaningful
- collaborative
- public

At all grade levels, students engage in standards-aligned “learning expeditions” where they explore themes in depth, conduct fieldwork, learn from experts, and create products that have relevance to the larger community.



Who We Are: Unique Features

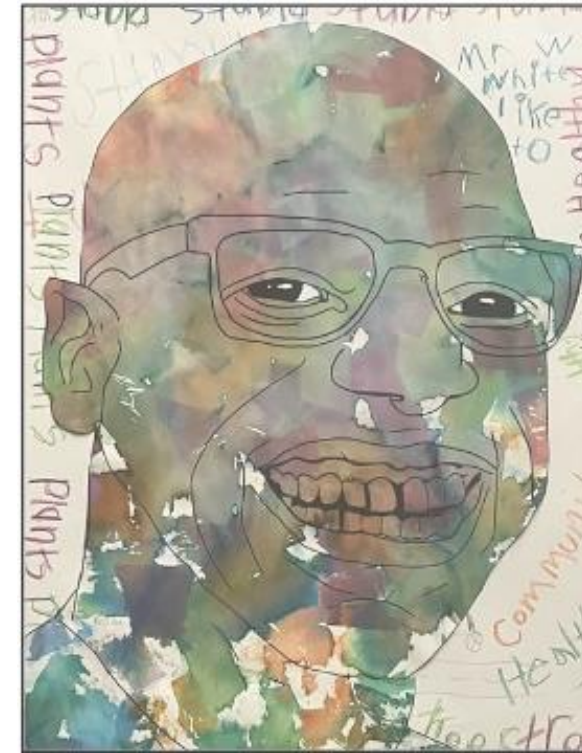
- Biannual Expositions of Student Learning
- Student Led Conferences
- Robust Outdoor Education Program (Grades 1-8 participate in an overnight trip once a year)
- A Culture of Crew
- Arts-Integrated
- Post-Session



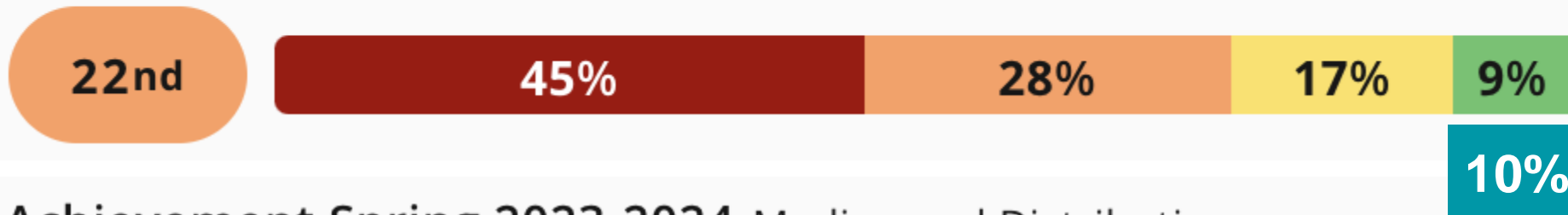
ASCEND TK-8 SCHOOL

What We're Proud Of

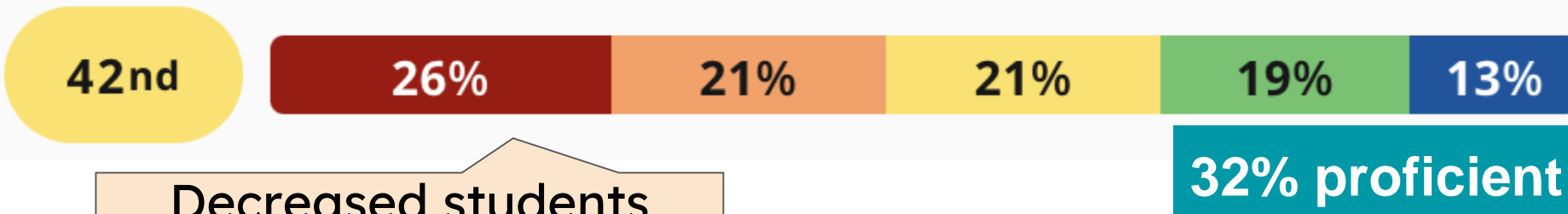
Growth and Proficiency for MOY MAP Math All students 23-24



Achievement Fall 2023-2024 Median and Distribution



Achievement Spring 2023-2024 Median and Distribution



Decreased students furthest from grade level by 19%

Increased proficiency by 22%!

What We're Proud Of

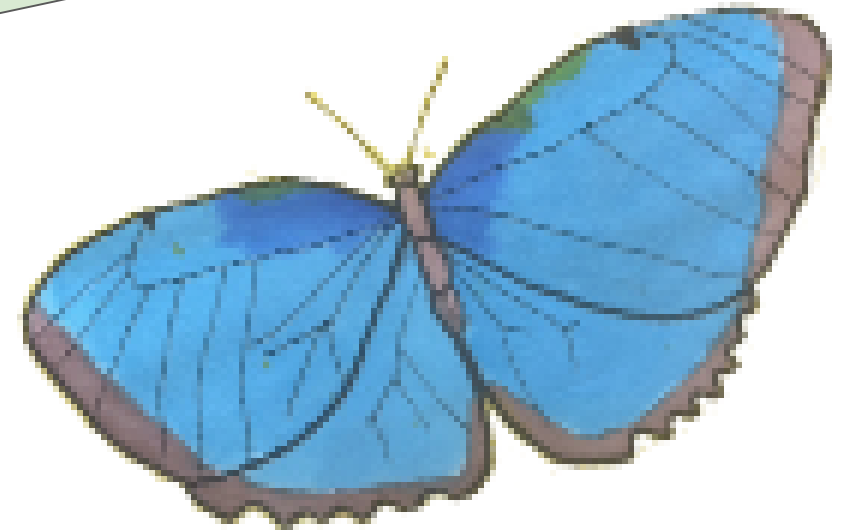
Below is the overall % of the grade level at Proficient as of the MOY screening window.
Numbers in parentheses indicate change from BOY.

EOY Goal: 75% of students proficient

MOY Goal: 51% of students proficient

	EFC	ASCEND
TK	60% (+57)	55% (+50)
Kinder	60% (+13)	70% (+26)
1st	43% (+10)	20% (+14)
2nd	35% (+4)	37% (+6)
Overall	47% (+14)	42% (+19)

At MOY last year, ASCEND was at 32% of TK-2 students proficient.
We are 10% higher at MOY this year!



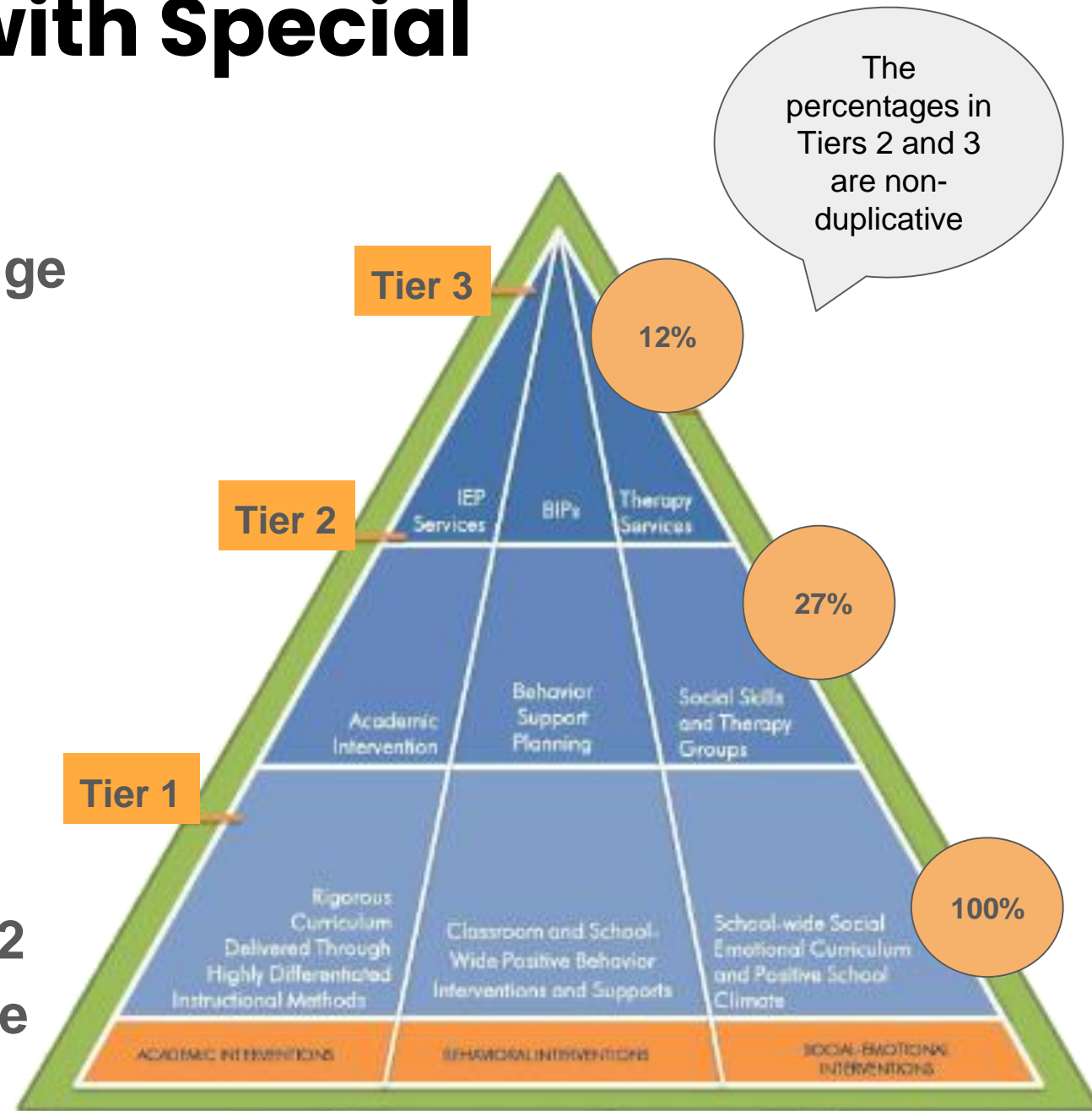
Areas for Continued Focus & Improvement

- Deepening our implementation of **Expeditionary Learning practices**, particularly around high quality work and increasing the relevance and community connections of our learning expeditions
- Continuing to build a **culture of Crew** amongst students, staff, and families
- Continuing our **focus on inclusivity**, particularly for our black students and families
- Continuing to engage all staff in **high quality, aligned professional development**
- **Improving attendance & reducing chronic absenteeism**



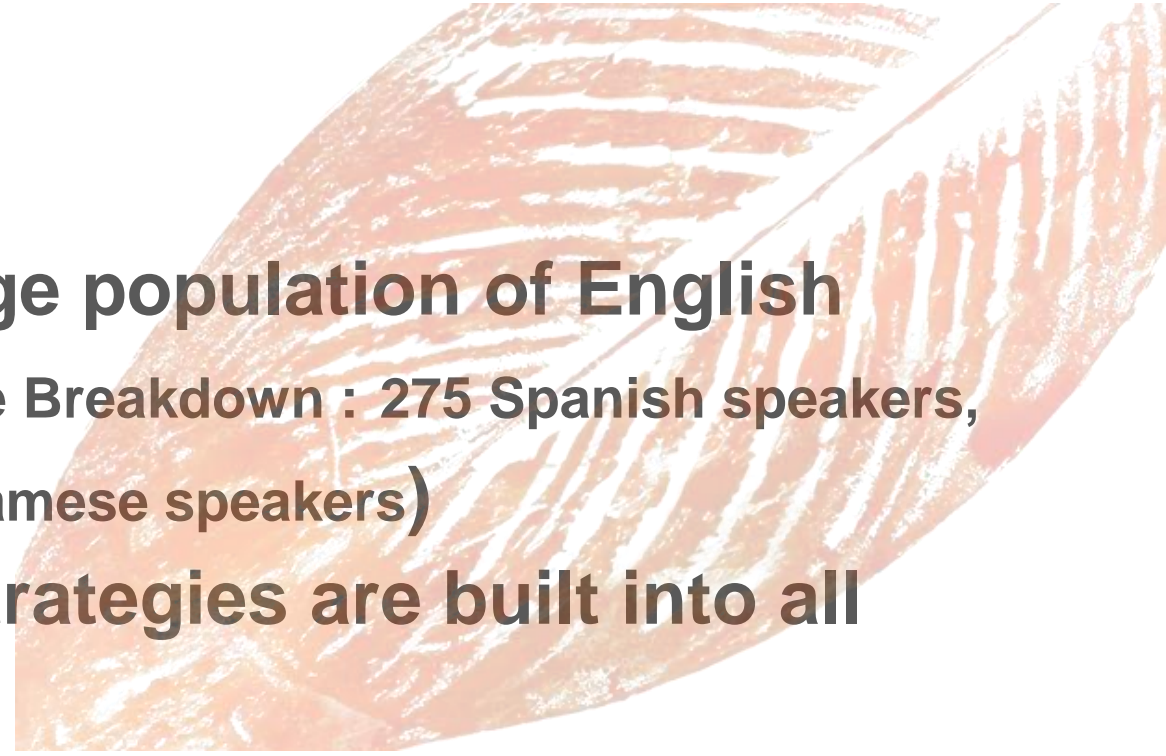
Supporting Students with Special Needs

- Full inclusion model with a wide range of specialized academic, social-emotional, behavioral, and mental health services
- Differentiated, scaffolded, and individualized instruction in general education settings
- Multi-Tiered System of Supports (MTSS) with Tier 1 services implemented school-wide, and Tier 2 and 3 targeting students who require additional services to succeed



English Learner Approach

- We are a school that serves a large population of English Language Learners (Home Language Breakdown : 275 Spanish speakers, 8 Arabic speakers, 7 Mum speakers, 2 Vietnamese speakers)
- English language development strategies are built into all instruction at all grade levels
- All teachers trained in using GLAD strategies
- Recently created a new role of ELD Interventionist who collaborates with classroom teachers to adapt instruction for English learners and provides both push in and pull out support for our newcomers



Closing Celebrations: Progress Towards Our 2023-24 Aspirations

Expeditionary Learning: Our learning community will deepen its knowledge around designing and facilitating expeditionary learning experiences so that students develop the academic and social emotional skills needed to forge their own paths and reflect the world they want to see.



Inclusivity: Staff, families, and students will root in community building, reflective practices and a common language around diversity, equity and inclusivity so that members of our community from marginalized backgrounds and identities feel seen, celebrated and cared for.

Closing Celebrations: Other Accomplishments

- ~250 families served by food bank monthly
- ~40,000 lbs of food given away to our families
- 15 annual outdoor trips
- 4 school-wide authentic student presentations of learning per year
- 97% of our teaching staff intends to return next year, indicating high teacher satisfaction



Closing Celebrations: Family Quotes

What are three words or phrases you would use to describe ASCEND?

- *Love, they are a family; Community is really big here*
- *Values– our first grader came home talking about perseverance and craftsmanship*
- *Independence: taking ownership of their own learning in ways that make them want to come to school*
- *Responsibility and accountability*



Closing Celebrations: Family Quotes

What is your child's learning experience like at ASCEND?

When my daughter arrived after the lockdown, her confidence was in the basement. She was way behind in reading. ASCEND created an environment to cultivate her and help her exceed. She is seen and supported by her teachers. The curriculum here, and the teachers, are amazing!



A stylized line drawing of a leopard's face, rendered in a light gray tone. The drawing uses simple outlines for the eyes, nose, and whiskers, with a pattern of dark spots on the fur. The text "Q&A" is centered above the leopard's eyes, and "Appendix" is centered below its mouth.

Q&A

Appendix