

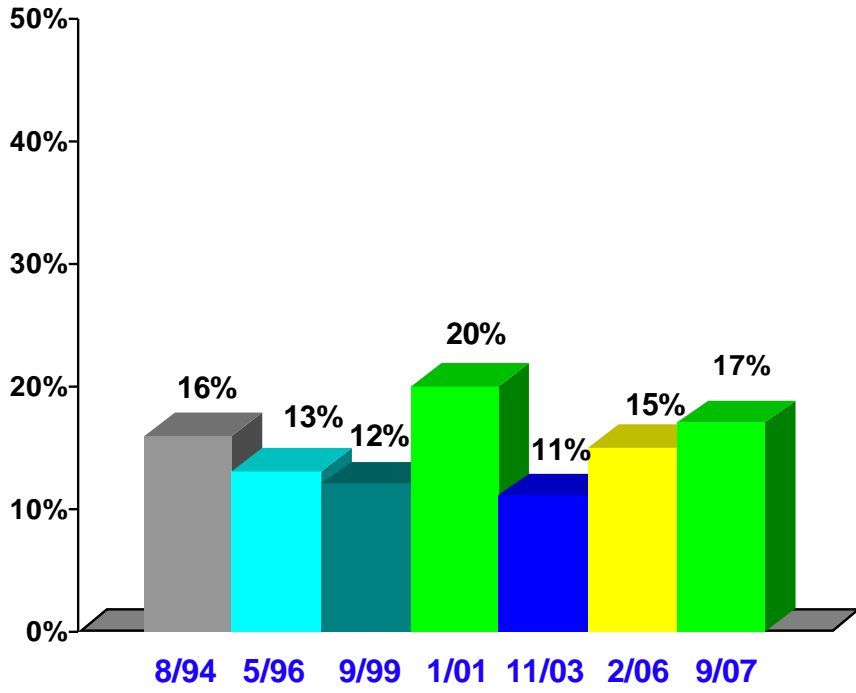
**SUMMARY CHARTS OF RESULTS FROM
A SURVEY OF LIKELY VOTERS IN THE
OAKLAND UNIFIED SCHOOL DISTRICT**

**400 INTERVIEWS
SEPTEMBER, 2007**

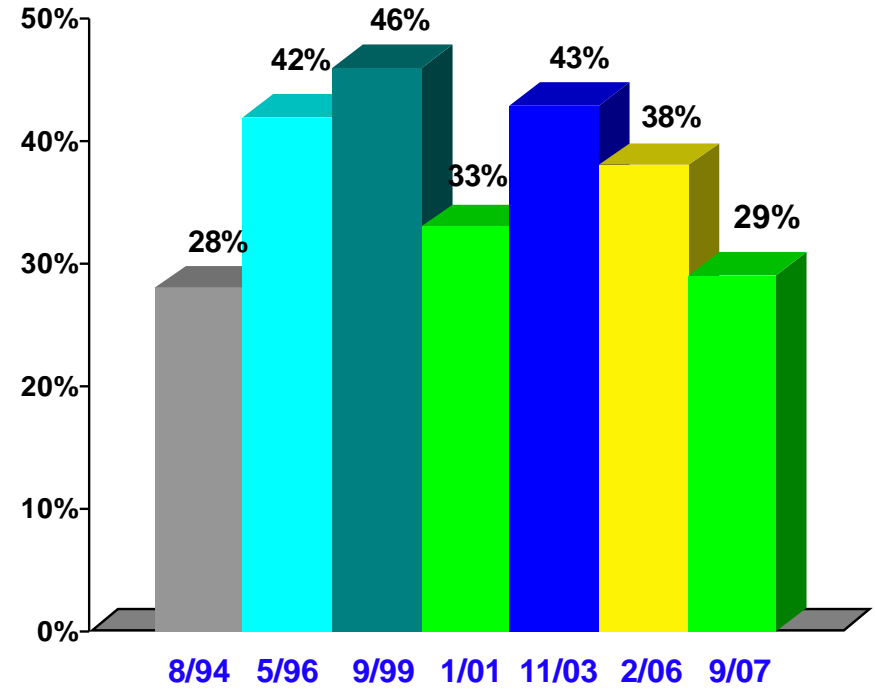
**CONDUCTED BY
GENE BREGMAN & ASSOCIATES**



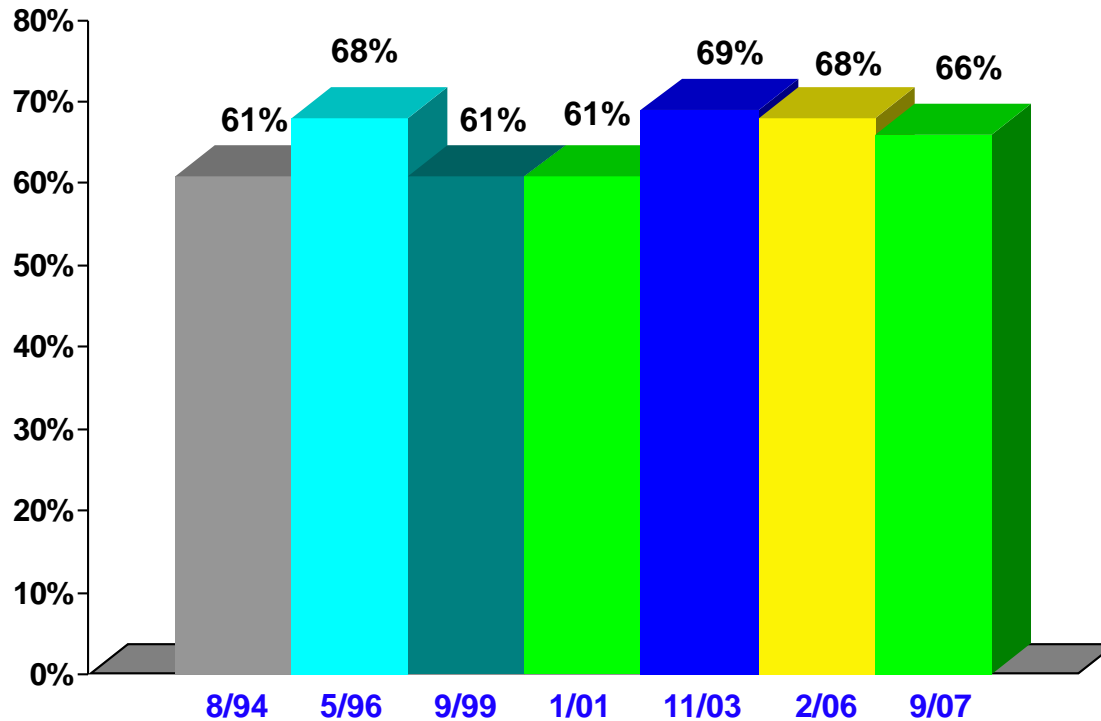
Comparison Of Excellent/Good Job Ratings For Oakland Unified School District



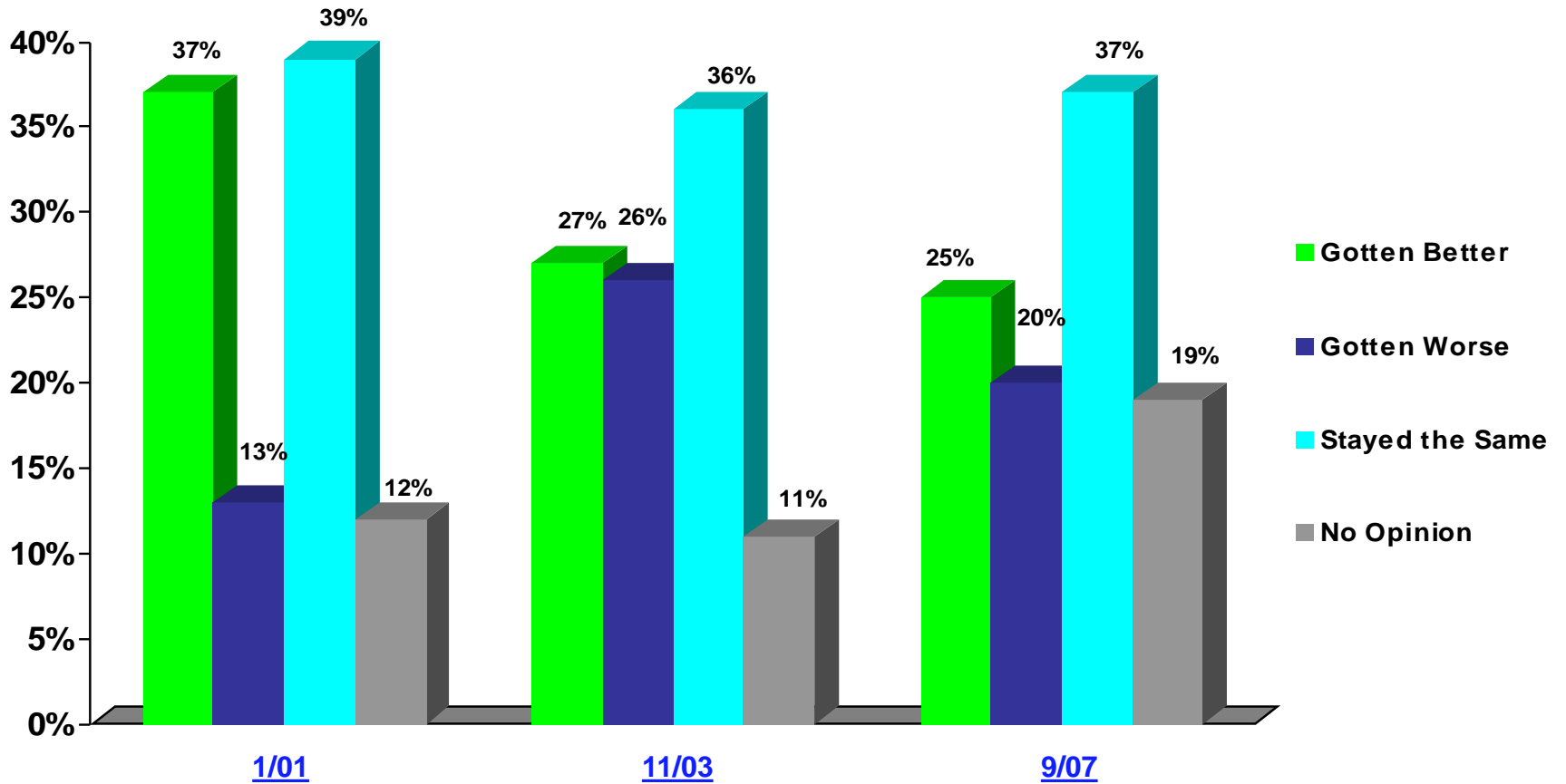
Comparison Of Poor Job Ratings For Oakland Unified School District



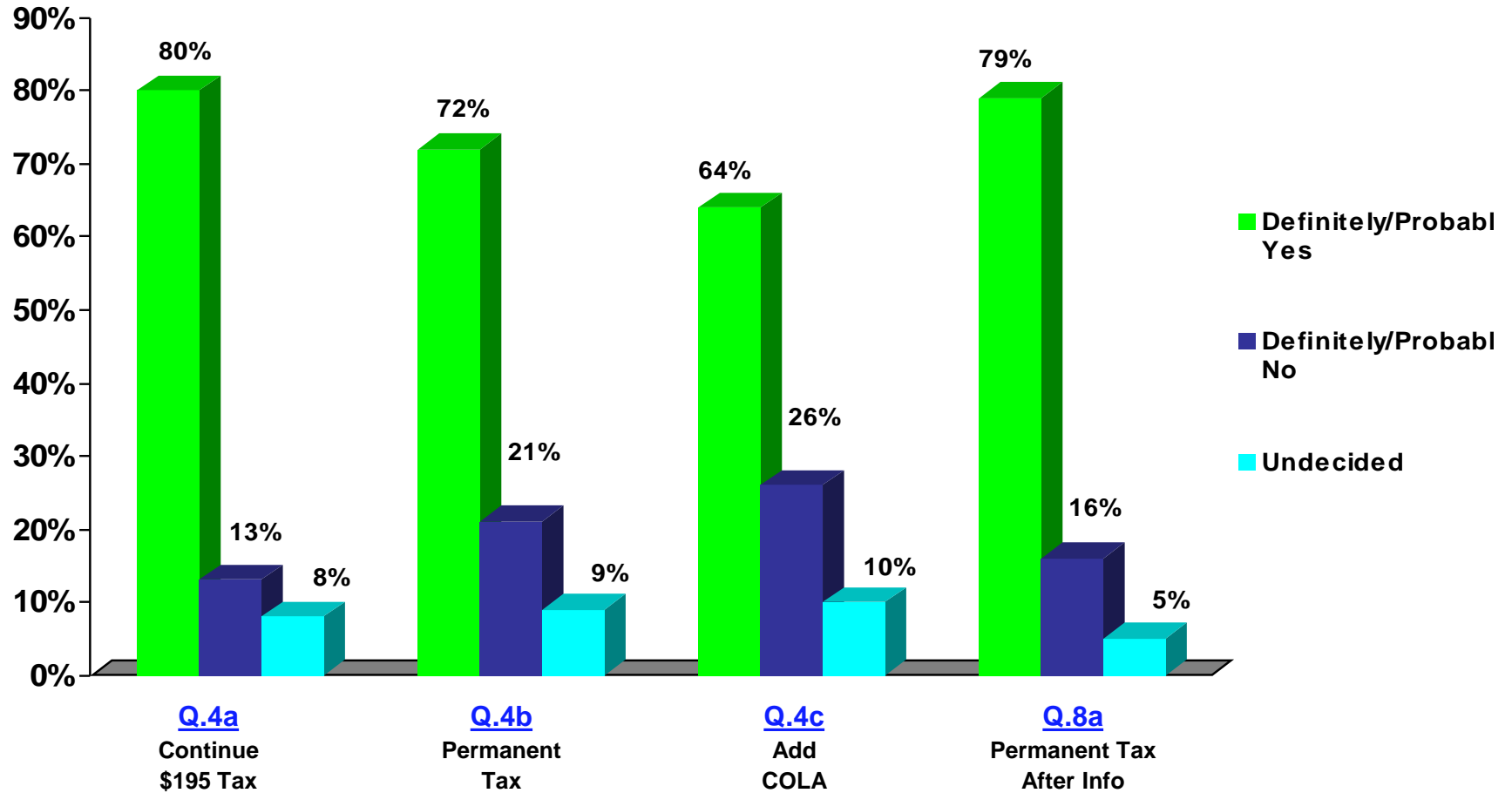
Comparison Of Great Need For More Money



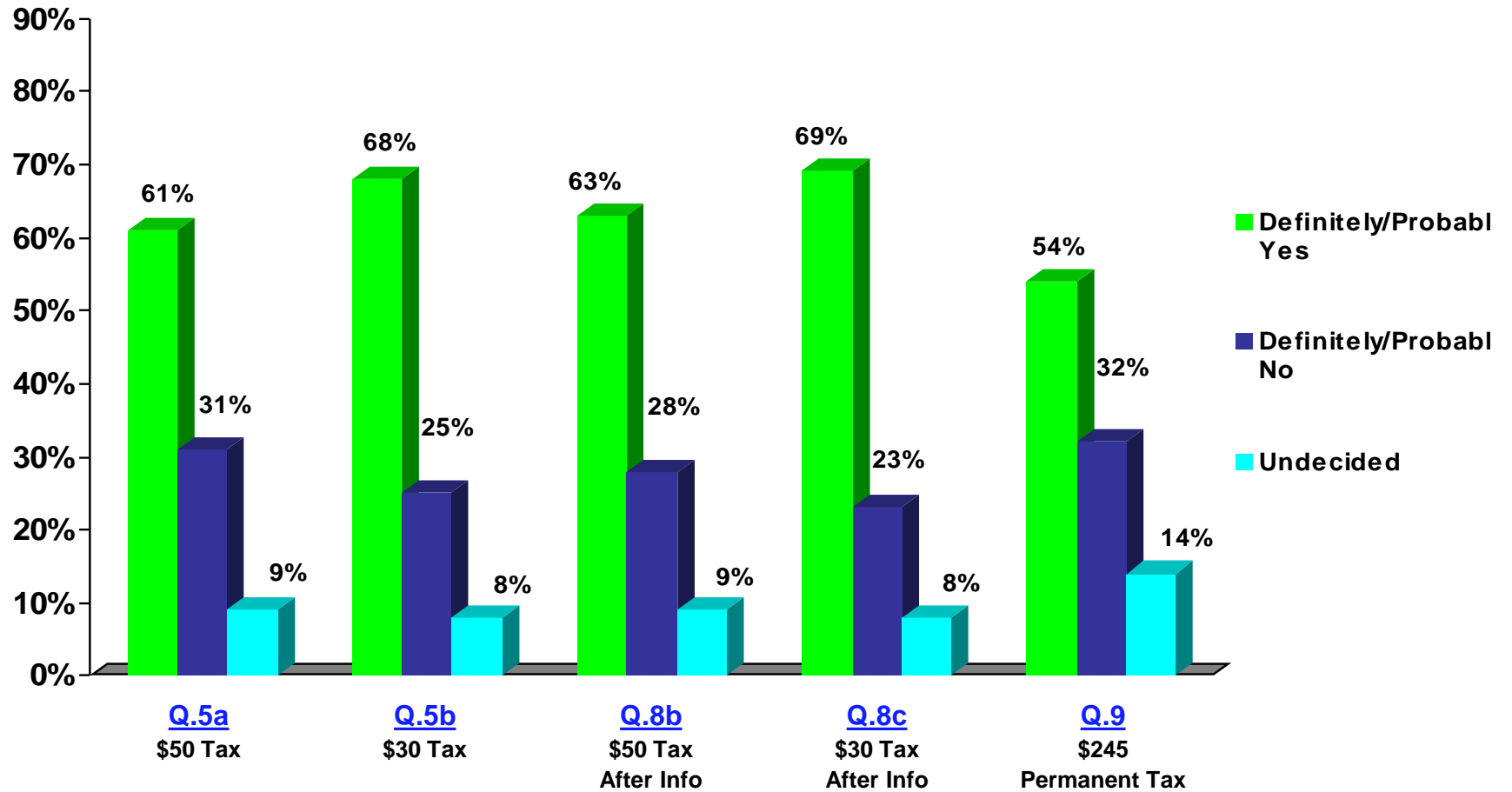
Comparison of Quality of Education In OUSD Over Previous Year or So



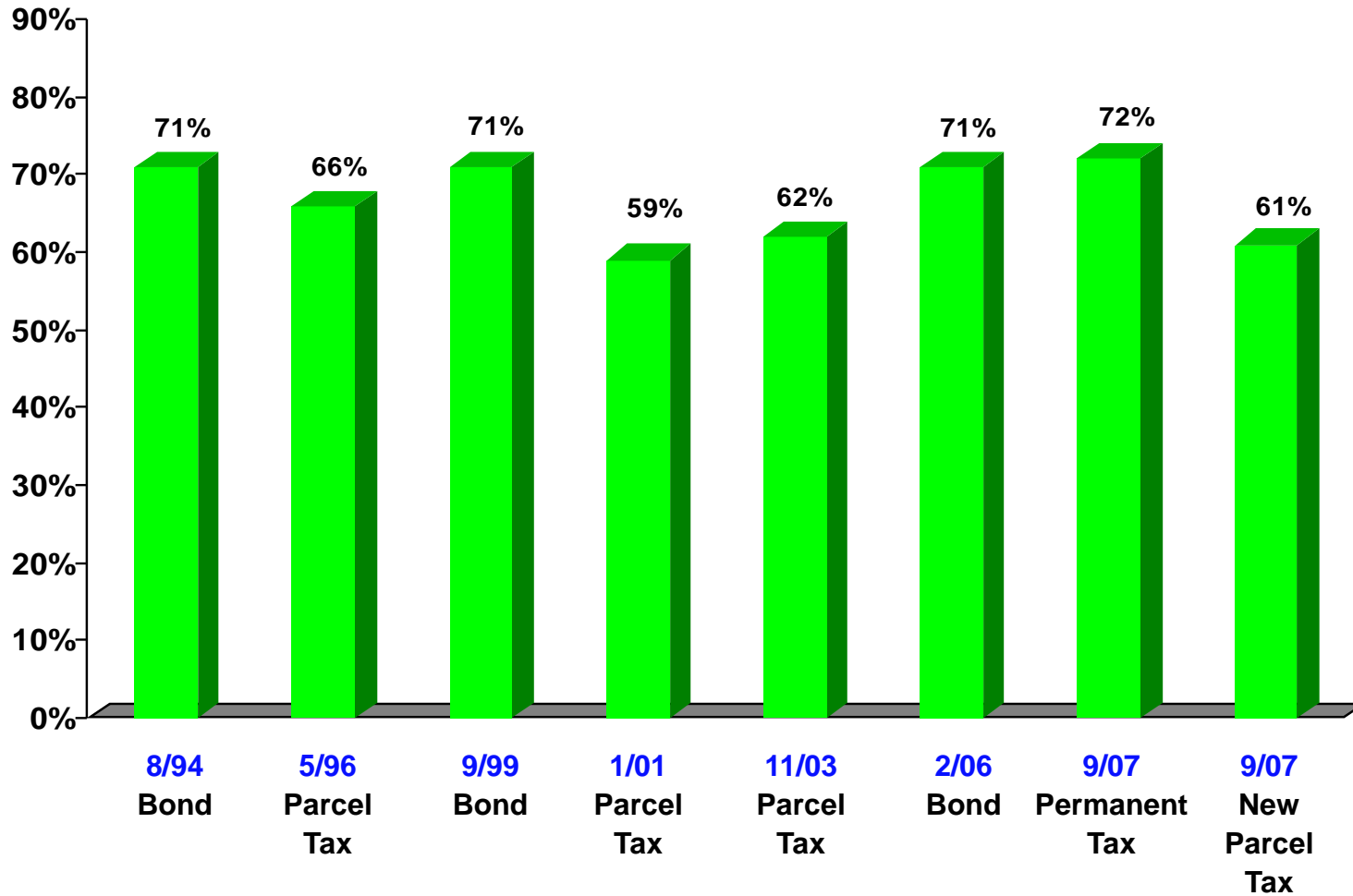
Four Votes on Extension of Current Parcel Tax



Five Votes on Additional Parcel Tax



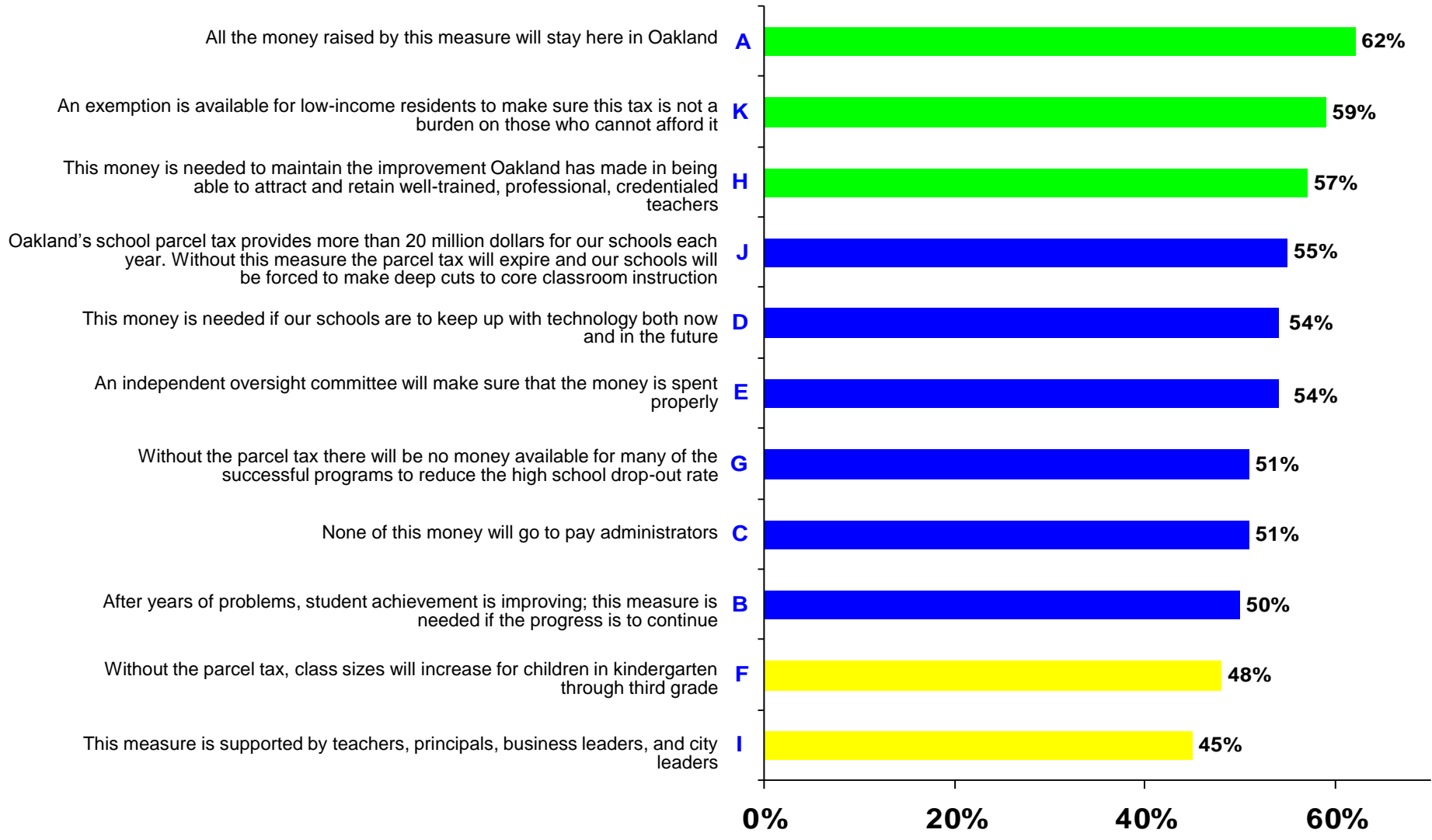
Comparison of Initial “Yes” Votes With Previous Surveys



Extremely Important Ways Parcel Tax Money Has Been Spent



Proportions Much More Favorable To Parcel Tax Measure



People/Organizations Very Believable On Parcel Tax Measure

