

Linked Learning

Presented by:
Alex Taghavian



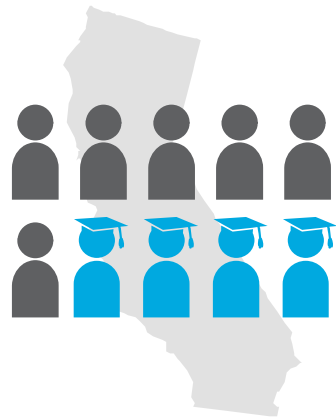
Linked Learning's founding aspiration

A majority of California's students—and specifically low-income students and students of color—participate in Linked Learning, and all of these students:

- Graduate from high school ready for college and career
- Earn a career-ready post-secondary degree or certificate capable of ensuring a family-sustaining wage
- Are employed in a financially sustaining and personally relevant career by age 25



Our education system is failing the majority of our students



**LESS THAN
HALF**

of high school students in California
graduate ready for college

The reality is even bleaker for people of color:

**ONLY 17% OF
LATINX ADULTS**



**...AND 33% OF
BLACK ADULTS**



hold a
post-
secondary
degree



Source: Public Policy Institute of California; National Center for Higher Education Management Systems

A standard of excellence for college and career preparation

Linked Learning is a proven approach to preparing all students for college and career success. Certification is the mark of quality in Linked Learning implementation.

Linked Learning has the potential to improve the lives of students, and particularly low-income students of color



The SRI evaluation found that compared to peers, Linked Learning graduates were...

+3.1

percentage
points

More likely to
graduate high school

+5.3

percentage
points

More likely to be
classified as ready or
conditionally ready
for college in English



In addition, Linked Learning showed differential gains for low-income students of color, compared to their peers...

+12.4

percentage
points

African American students
were more likely to
enroll in 4-year college

+11.7

credits

Latinx students
accumulated more credits
on average

Source: SRI International.

Linked Learning builds 21st century job skills

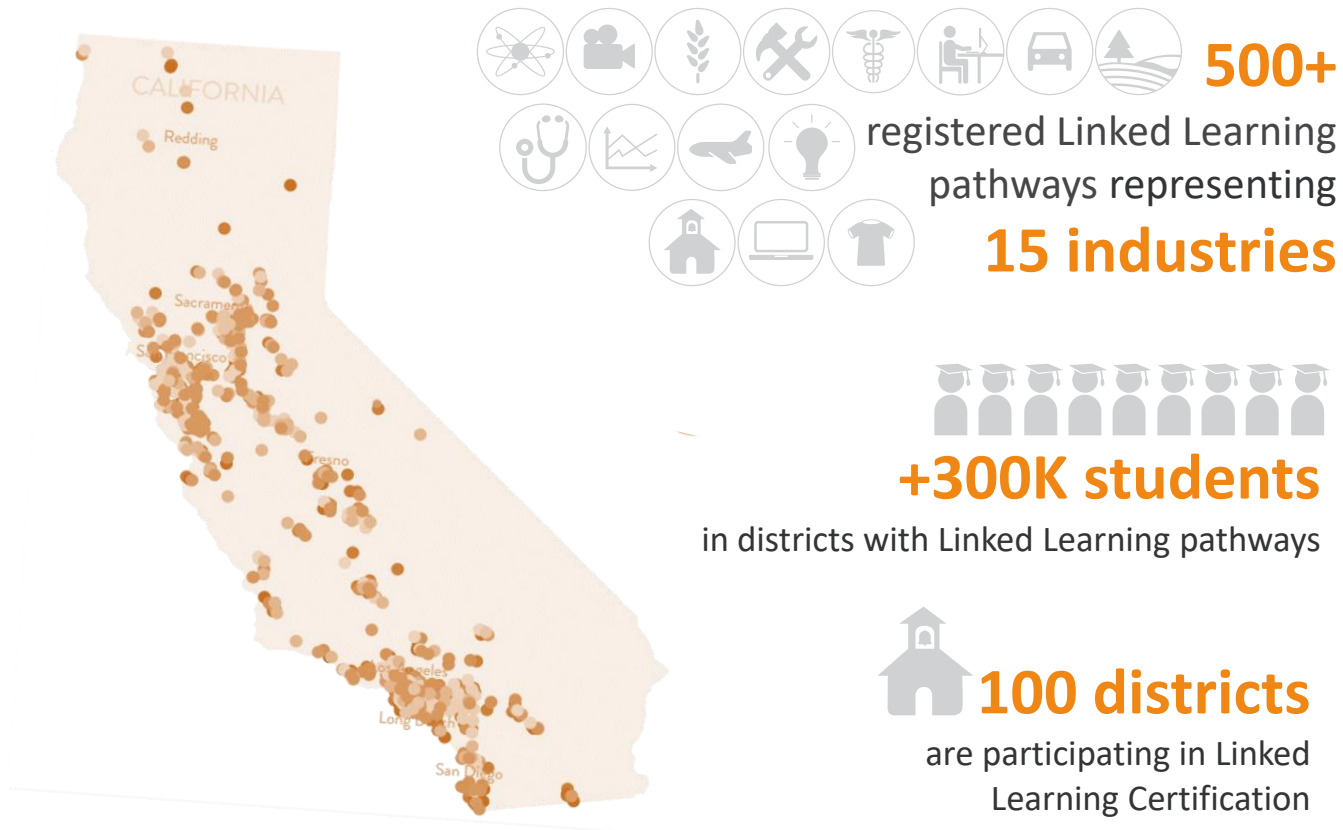
Present to a group *+22 percentage points*

Speak in public *+16 percentage points*

Conduct online searches to answer a question
+16 percentage points



Linked Learning has expanded its reach across California...



Source: LLA databases

We need a
clear standard
for excellence





LINKED LEARNING[®]
CERTIFICATION

Linked Learning Certification



Candidate
*the core
elements are
in place*



Silver
*using data to
strengthen
pathways*



Gold
*evidence of
positive
impact for
students*

Pathway excellence means



AN INTEGRATED
PROGRAM OF STUDY



WORK-BASED LEARNING
OPPORTUNITIES



STUDENT SUPPORTS



LINKED LEARNING® CERTIFICATION

Certification is audited and awarded by the
Linked Learning Alliance—a nonprofit focused
on Linked Learning quality.



Linked Learning Gold Certification

There are two ways to become Gold Certified...

Quantitative



OR

Qualitative





QUALITATIVE

Pathways selecting a qualitative track will verify they are achieving gold standards through a review by an approved evaluation team. The process will consist of a presentation of your pathway to the evaluation team and a subsequent in-person site visit.



CONNECT &
PLAN



PRESENTATION &
ON-SITE AUDIT



LEARN, EARN,
& GROW

Evaluation Team Partners

- Field Partners and Capacity Builders
- District Administrators
- County Offices of Education





QUANTITATIVE

Pathways selecting a quantitative track will verify they are achieving exceptional student outcomes through participation in Linked Learning Analytics.



LINKED LEARNING
ANALYTICS



EVIDENCE
REVIEW



LEARN, EARN,
& GROW

LINKED LEARNING ANALYTICS

5x5 Dashboard




Network: CORE

District: Fresno Unified

School Level: HS

School Type: Traditional

School: Edison High

School Year: 2016-2017

Pathway: Biomedical Science

Measure: Chronic Absence

Measure: Chronic Absence 2016-2017

	Change from 2015-2016 to 2016-2017 in Chronic Absence				
	Increased Significantly: Change of 5 or worse in Percent Chronically Absent	Increased: Change of between 4 & 1 in Percent Chronically Absent	Maintained: Change of 0 in Percent Chronically Absent	Declined: Change of between -1 & -5 in Percent Chronically Absent	Declined: Change of more than -5 in Percent Chronically Absent
Very Low: Status of 10 of better in Percent Chronically Absent		Not African American All Not Pure English Language Learners Not RFP Students Not ELs (Active ELs & Up to 4y RFPs) Latinx Not Latinx Socioeconomically Disadvantaged Not Socioeconomically Disadvantaged Not White Not Asian		Asian	Pure Learn
Low: Status between 15 & 11 in Percent Chronically Absent	African American	ELs (Active ELs & Up to 4y RFPs) White			
Medium: Status of between 20 & 16 in Percent Chronically Absent	RFP Students				
High: Status of between 25 & 21 in Percent Chronically Absent					
Very High: Status of 26 or worse in Percent Chronically Absent					

Pathway: Biomedical Science

Measure: Chronic Absence

- Chronic Absence
- Chronic Absence
- Chronic Absence
- Distance - ELA
- Distance - Math
- ELA
- EL Indicator
- EL Re-Designation
- Family Culture Climate
- Graduation
- Growth Mindset
- High School Readiness
- Math
- Percent of Students Suspended
- Self-Efficacy
- Self-Management
- Social Awareness
- Staff Culture Climate
- Student Culture Climate
- Suspensions

CORE Index

LCAP

LCAP Overview

5x5 District

5x5 School

Academic Measures

On-Demand Analytics

Preliminary College Analytics

Linked Learning Analytics

CORE Resources



Thank you!

For more information email
info@linkedlearning.org

