

Board Office Use: <b>Legislative File Info.</b>	
File ID Number	24-1403
Introduction Date	05/23/2024
Enactment Number	
Enactment Date	



# Board Cover Memorandum

**To** Board of Education

**From** Kyla Johnson-Trammell, Superintendent  
Kelly Krag-Arnold, Director - Office of Charter Schools  
Marwa Doost, Compliance Specialist - Office of Charter Schools

**Meeting Date** May 23, 2024

**Subject** Charter School Spotlight Presentation - ASCEND

---

**Ask of the Board** Discussion

**Background** Currently, there are few opportunities for the OUSD Board and charter schools to interact outside of Prop 39 decisions, material revisions, and renewals, the latter of which has been delayed for three years by the State legislature. In order to address this gap, the Office of Charter Schools will coordinate charter school presentations to take place at Charter Committee Meetings, per the Charter Committee Chair’s request. These presentations will provide both an additional accountability touch point for charter schools as well as an opportunity for Charter Committee members to develop a deeper understanding of the charter schools authorized by the District, beginning with those up for renewal in the 2024-25 school year.

This month’s School Spotlight will be presented by Shraddha Soparawala, Interim Co-Principal at ASCEND. For a snapshot of background information on this school, see the Appendix below.

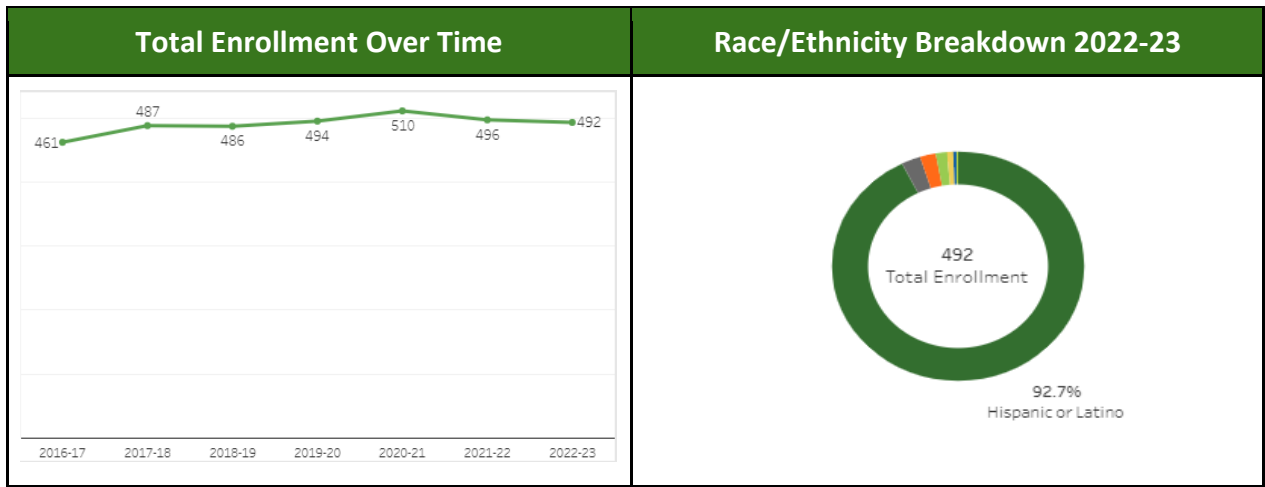
**Discussion** This serves as an opportunity for this charter school to check-in with the Board about successes and growth areas outside of the normal renewal timeline.

**Fiscal Impact** None

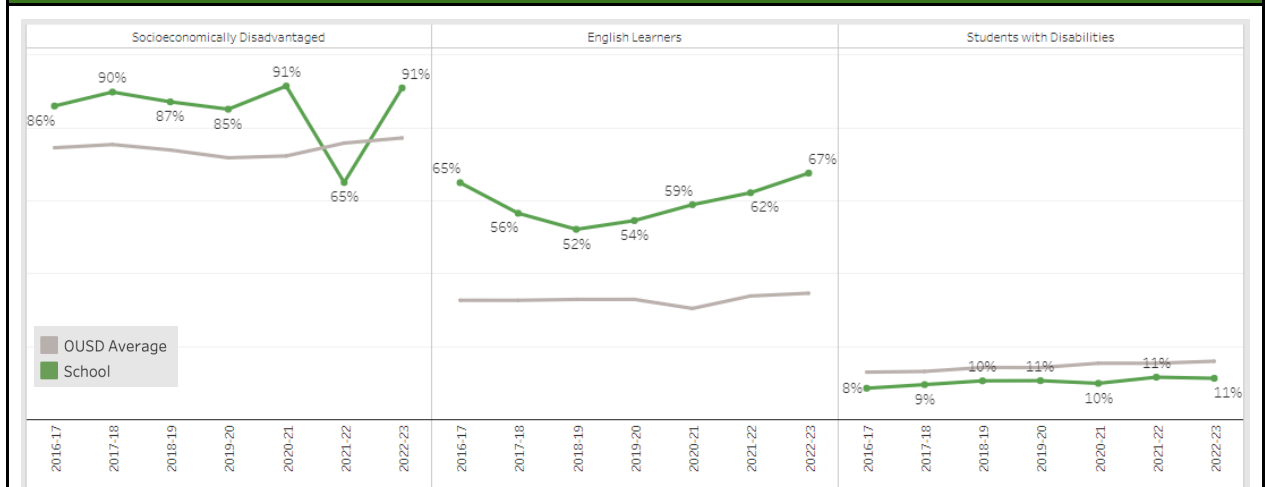
**Attachment(s)** • Presentation

## Appendix - School Background Information

All data publicly available from the California Department of Education unless otherwise noted.



### Key Student Groups: Percent of Total Enrollment



### California School Dashboard: 2022-23

Indicator	Status	Change	Color
Chronic Absenteeism	35.6%	13.6 pp	Red
English Language Arts	-36.3	3.7 pts	Yellow
English Learner Progress	49.8%	-10.3 pp	Orange
Mathematics	-69.0	9.6 pts	Yellow
Suspension Rate	2.0%	-1.1 pp	Green



An Arts Integrated EL Education School

# Who We Are



**Grades Served:** TK-8

**Location:** Fruitvale (East 12th between 38th & 39th Avenues)

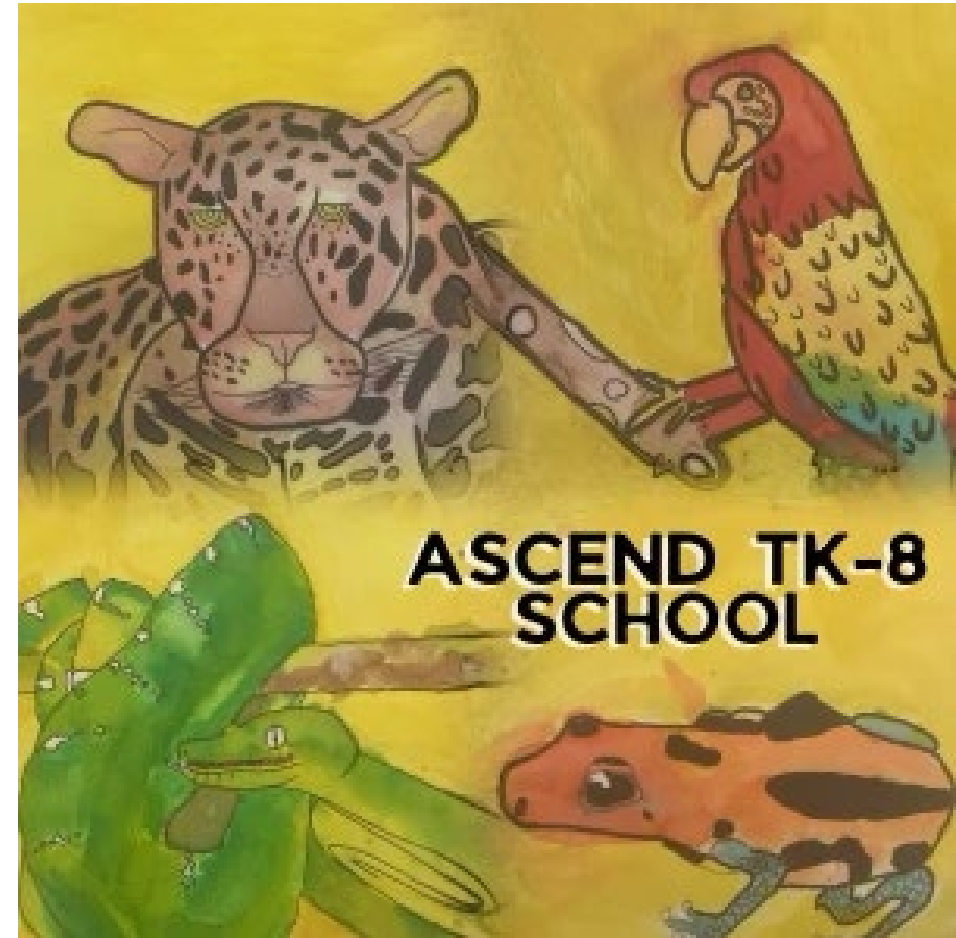
The vision of ASCENDs is to nurture a passion for learning and cultivate personal agency in order to discover who we are, what we need and how to advocate for it. Together, our community of students, families and staff explores, learns and grows through success and failure. Diverse learners thrive through an approach that develops the whole individual, which includes arts-integration, expeditionary learning, personalization, and a focus on social and emotional growth. Through a common vision guided by love, we empower each other to forge our own paths and to create a school that reflects the world we want.

# Who We Are: Educational Philosophy

As an EL school, we believe that learning should be:

- challenging
- active
- meaningful
- collaborative
- public

At all grade levels, students engage in standards-aligned “learning expeditions” where they explore themes in depth, conduct fieldwork, learn from experts, and create products that have relevance to the larger community.



# Who We Are: Unique Features

- Biannual Expositions of Student Learning
- Student Led Conferences
- Robust Outdoor Education Program (Grades 1-8 participate in an overnight trip once a year)
- A Culture of Crew
- Arts-Integrated
- Post-Session

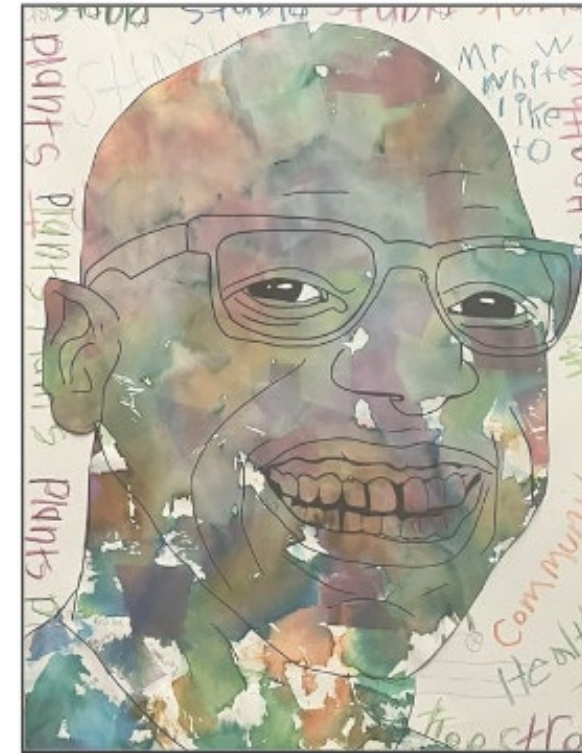


ASCEND TK-8 SCHOOL

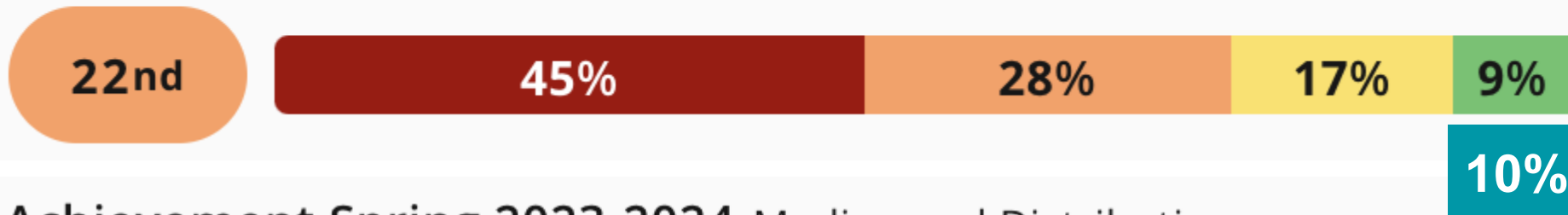


# What We're Proud Of

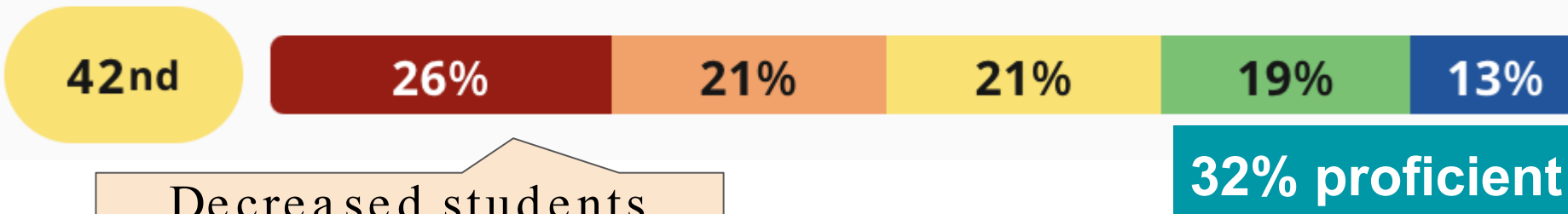
Growth and Proficiency for MOY MAP Math  
All students 23-24



Achievement Fall 2023-2024 Median and Distribution



Achievement Spring 2023-2024 Median and Distribution



Decreased students furthest from grade level by 19%

Increased proficiency by 22%!

# What We're Proud Of

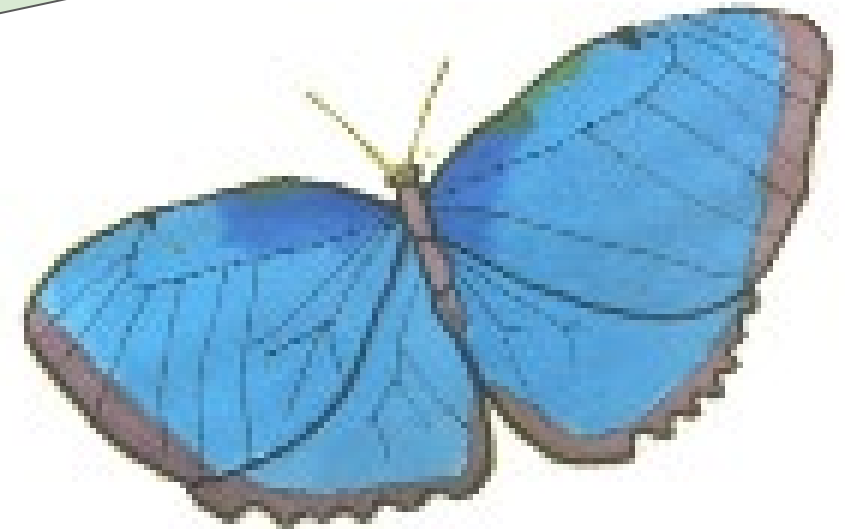
Below is the overall % of the grade level at Proficient as of the MOY screening window.  
Numbers in parentheses indicate change from BOY.

EOY Goal: 75% of students proficient

MOY Goal: 51% of students proficient

	<b>EFC</b>	<b><u>ASCEND</u></b>
<b>TK</b>	60% (+57)	55% (+50)
<b>Kinder</b>	60% (+13)	70% (+26)
<b>1st</b>	43% (+10)	20% (+14)
<b>2nd</b>	35% (+4)	37% (+6)
<b>Overall</b>	47% (+14)	42% (+19)

At MOY last year, ASCEND was at 32% of TK-2 students proficient.  
**We are 10% higher at MOY this year!**





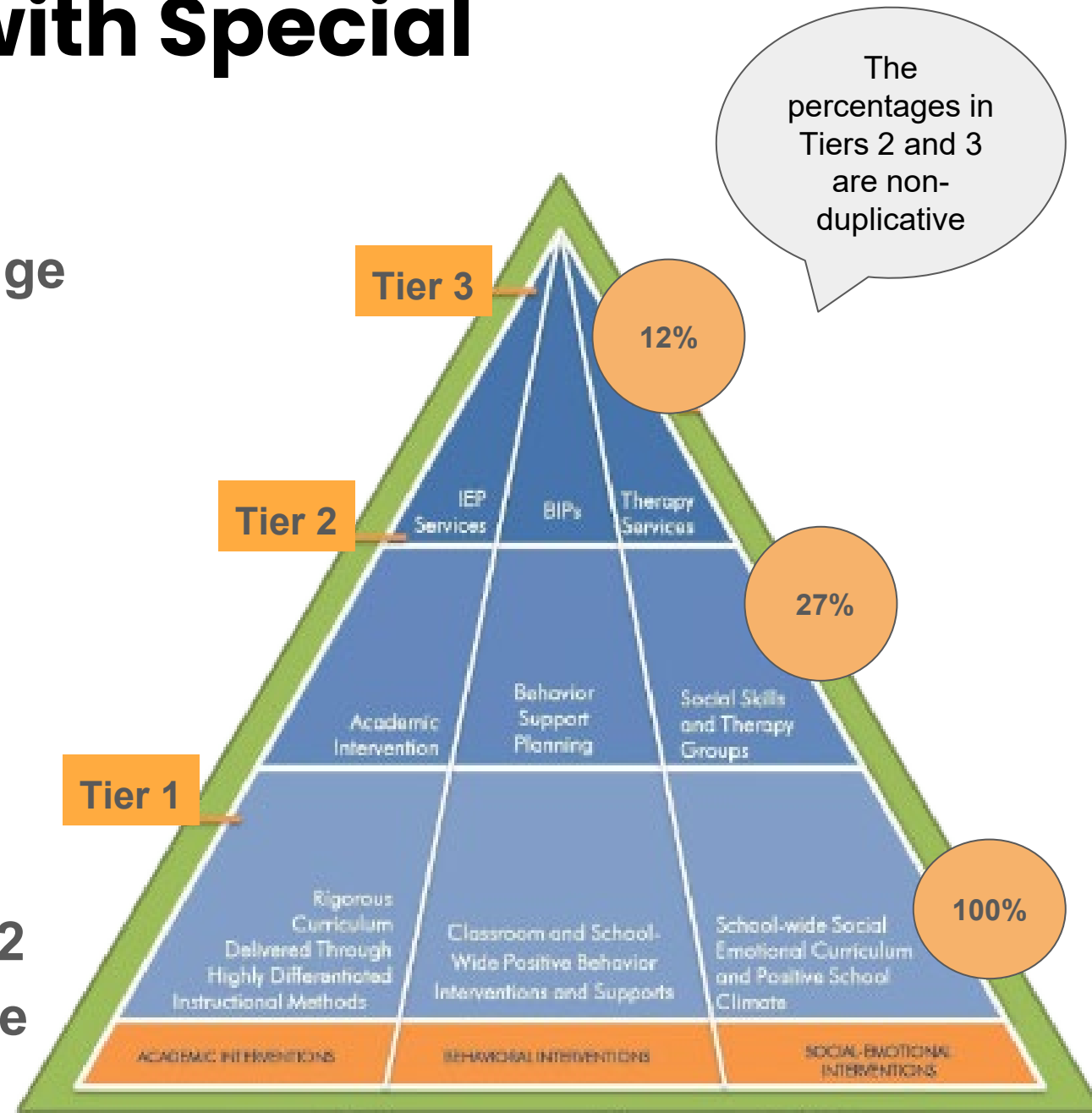
# Areas for Continued Focus & Improvement

- Deepening our implementation of **Expeditionary Learning practices**, particularly around high quality work and increasing the relevance and community connections of our learning expeditions
- Continuing to build a **culture of Crew** amongst students, staff, and families
- Continuing our **focus on inclusivity**, particularly for our black students and families
- Continuing to engage all staff in **high quality, aligned professional development**
- **Improving attendance & reducing chronic absenteeism**



# Supporting Students with Special Needs

- Full inclusion model with a wide range of specialized academic, social-emotional, behavioral, and mental health services
- Differentiated, scaffolded, and individualized instruction in general education settings
- Multi-Tiered System of Supports (MTSS) with Tier 1 services implemented school-wide, and Tier 2 and 3 targeting students who require additional services to succeed





# English Learner Approach

- **We are a school that serves a large population of English Language Learners ( Home Language Breakdown : 275 Spanish speakers, 8 Arabic speakers, 7 Mum speakers, 2 Vietnamese speakers)**
- **English language development strategies are built into all instruction at all grade levels**
- **All teachers trained in using GLAD strategies**
- **Recently created a new role of ELD Interventionist who collaborates with classroom teachers to adapt instruction for English learners and provides both push in and pull out support for our newcomers**

# Closing Celebrations: Progress Towards Our 2023-24 Aspirations

Expeditionary Learning: Our learning community will deepen its knowledge around designing and facilitating expeditionary learning experiences so that students develop the academic and social emotional skills needed to forge their own paths and reflect the world they want to see.



Inclusivity: Staff, families, and students will root in community building, reflective practices and a common language around diversity, equity and inclusivity so that members of our community from marginalized backgrounds and identities feel seen, celebrated and cared for.

# Closing Celebrations: Other Accomplishments

- ~250 families served by food bank monthly
- ~40,000 lbs of food given away to our families
- 15 annual outdoor trips
- 4 school-wide authentic student presentations of learning per year
- 97% of our teaching staff intends to return next year, indicating high teacher satisfaction

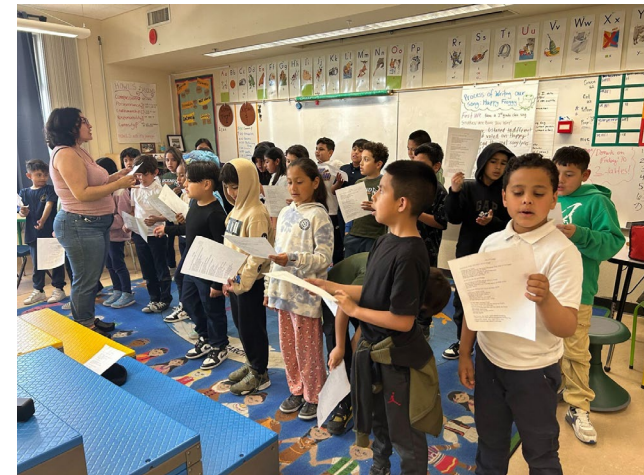




# Closing Celebrations: Family Quotes

What are three words or phrases you would use to describe ASCEND?

- *Love, they are a family; Community is really big here*
- *Values— our first grader came home talking about perseverance and craftsmanship*
- *Independence: taking ownership of their own learning in ways that make them want to come to school*
- *Responsibility and accountability*





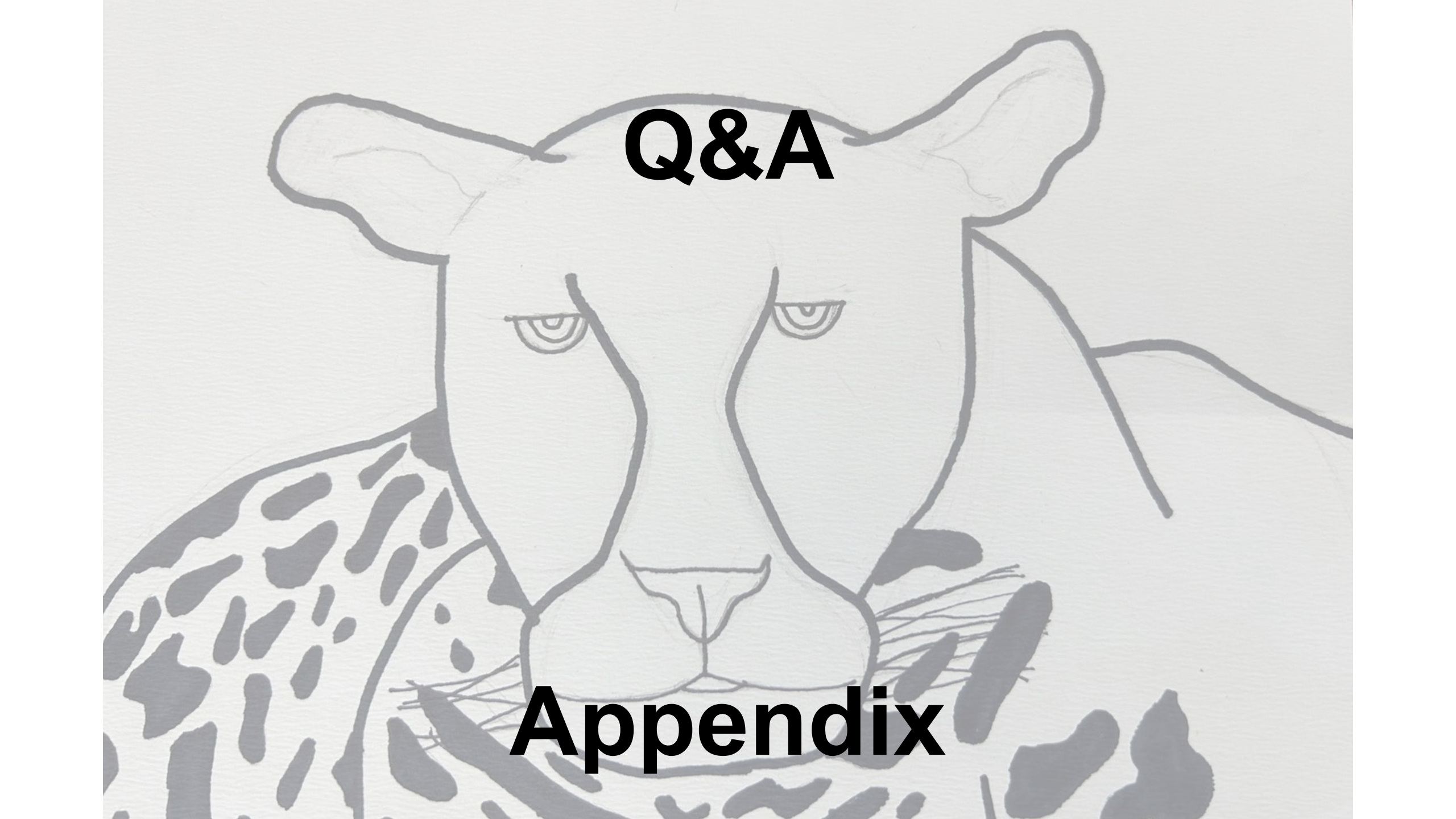
# Closing Celebrations: Family Quotes

What is your child's learning experience like at ASCEND?

*When my daughter arrived after the lockdown, her confidence was in the basement. She was way behind in reading. ASCEND created an environment to cultivate her and help her exceed. She is seen and supported by her teachers. The curriculum here, and the teachers, are amazing!*







**Q&A**

**Appendix**