The background features several large, colorful, swirling shapes in shades of purple, green, and blue. Interspersed among these are numerous small, yellow, triangular shapes that resemble confetti or starbursts.

Lincoln Elementary School

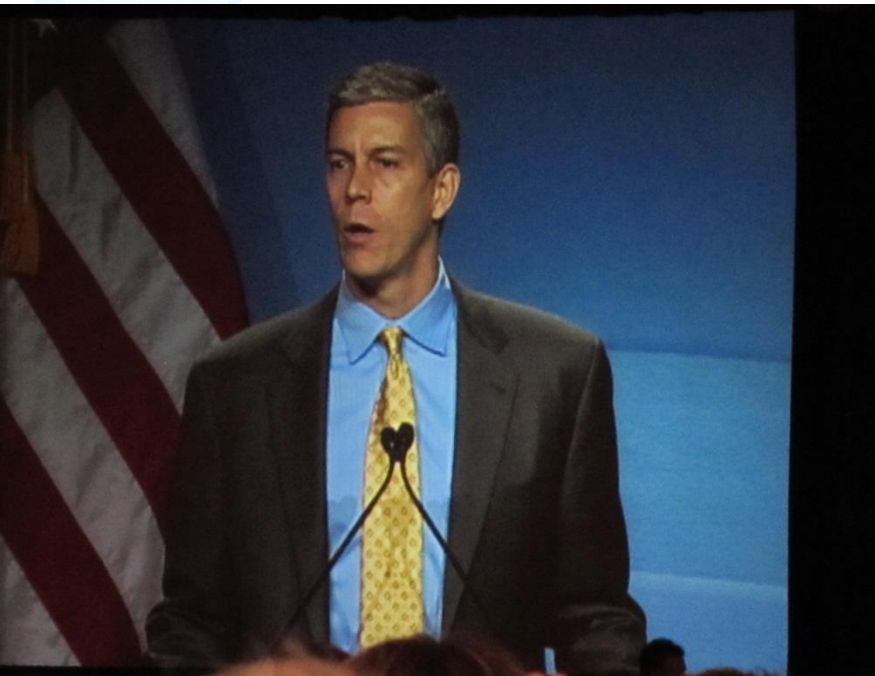
Moving From Good to Great

November 17, 2010

Blue Ribbon Ceremony- Nov. 15-16- Washington, D.C.

- Robert Kennedy – “Ripples of Hope” –
“There is a brilliant child locked inside every student”

US leading the world in college graduation rates by 2020 (currently we are 9th)



Blue Ribbon Ceremony

- Education is a god-given right
Moral and Economic Imperative
Reforms- Too hard? Too expensive?
Seeing schools where kids who could have
been cast aside are succeeding



Local Blue Ribbon Recognition

- “People used to move to California because of the quality of our schools”



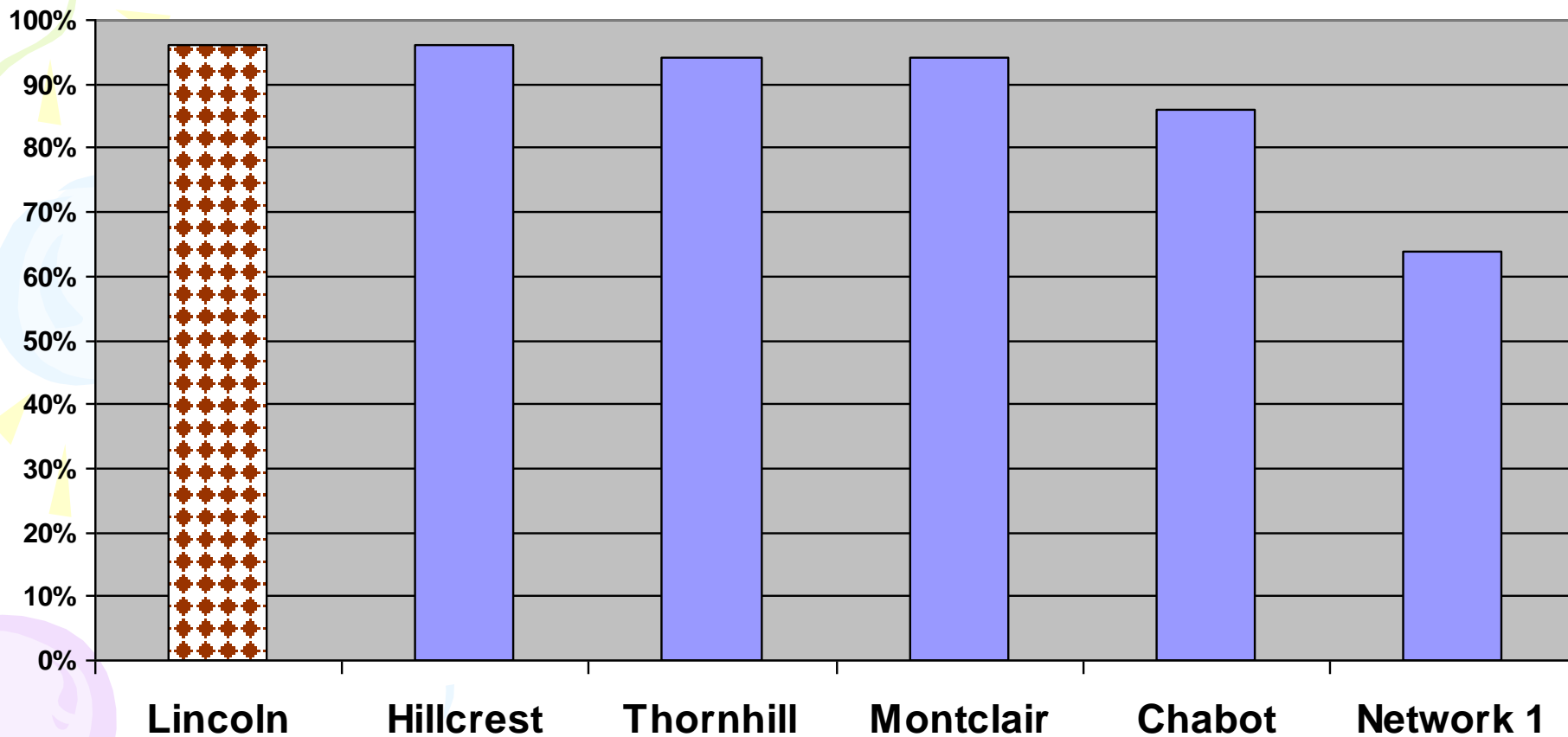
School Profile

- **633 Students in the heart of Oakland Chinatown**
- **125 year history**
- **73% Free and Reduced Lunch**
- **59% English Learners**
- **30% IFEP/REFP**
- **API Growth from 780 in 2001 to 953 in 2010
(from 906 to 953 in two years)**

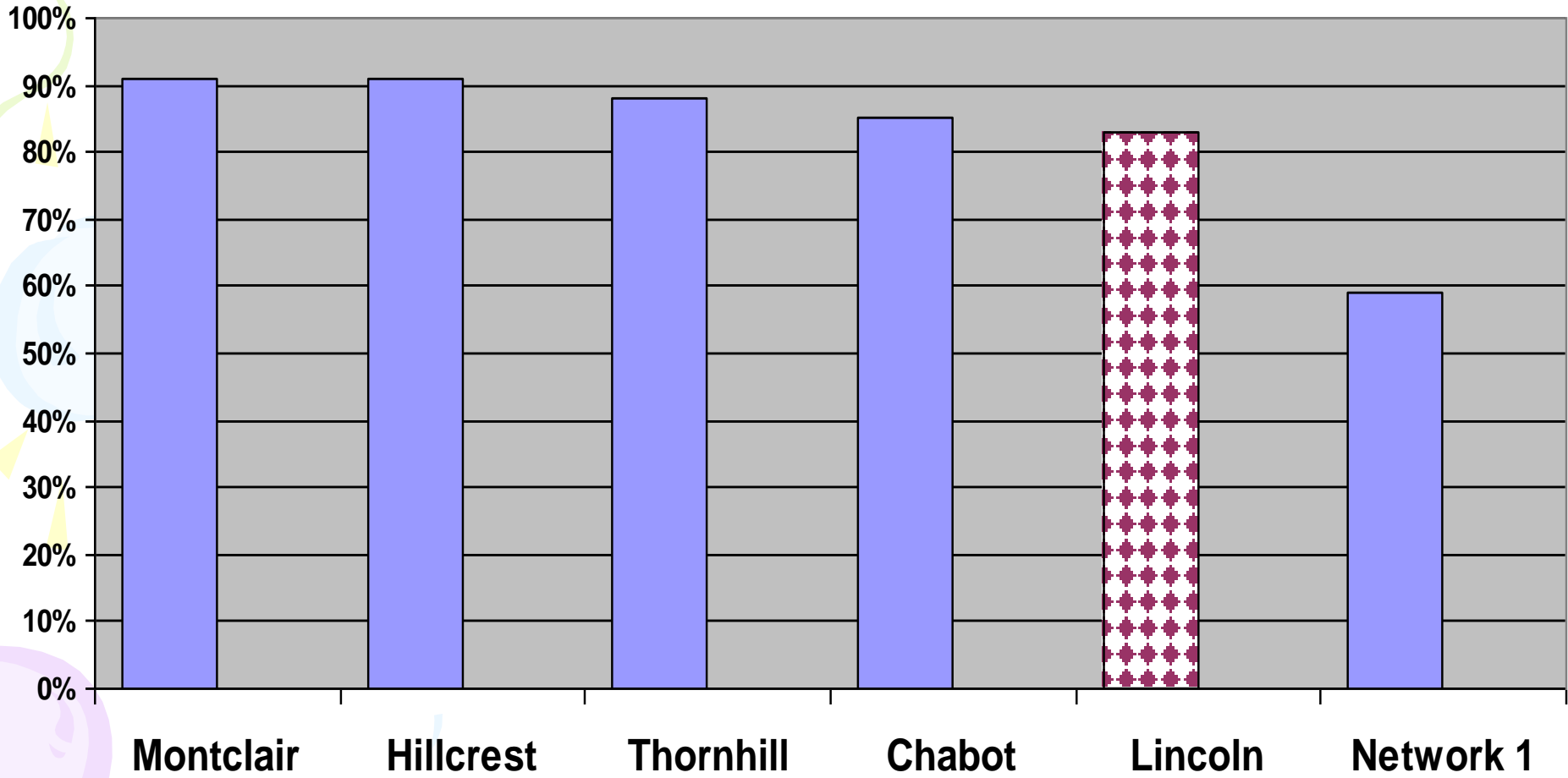
School Profile

- **2010 National Blue Ribbon School Winner**
- **#1 achievement in California in schools with Title 1 population above 70%**
- **Average teacher experience - 17 years**
- **Title 1 Academic Achievement Award - 2004-present**
- **California Distinguished School - 2008**

% students scoring Advanced or Proficient in Math on CST - Oakland Unified School District



% students scoring Advanced or Proficient in ELA on CST - Oakland Unified School District



Data Review

- **English/Language Arts - 83% Advanced/Proficient (increase of 4.4%) #5 in OUSD**
- **Math - 96% Advanced/Proficient (increase of 1.5%) still #1 in OUSD!!**

ELA Data Review

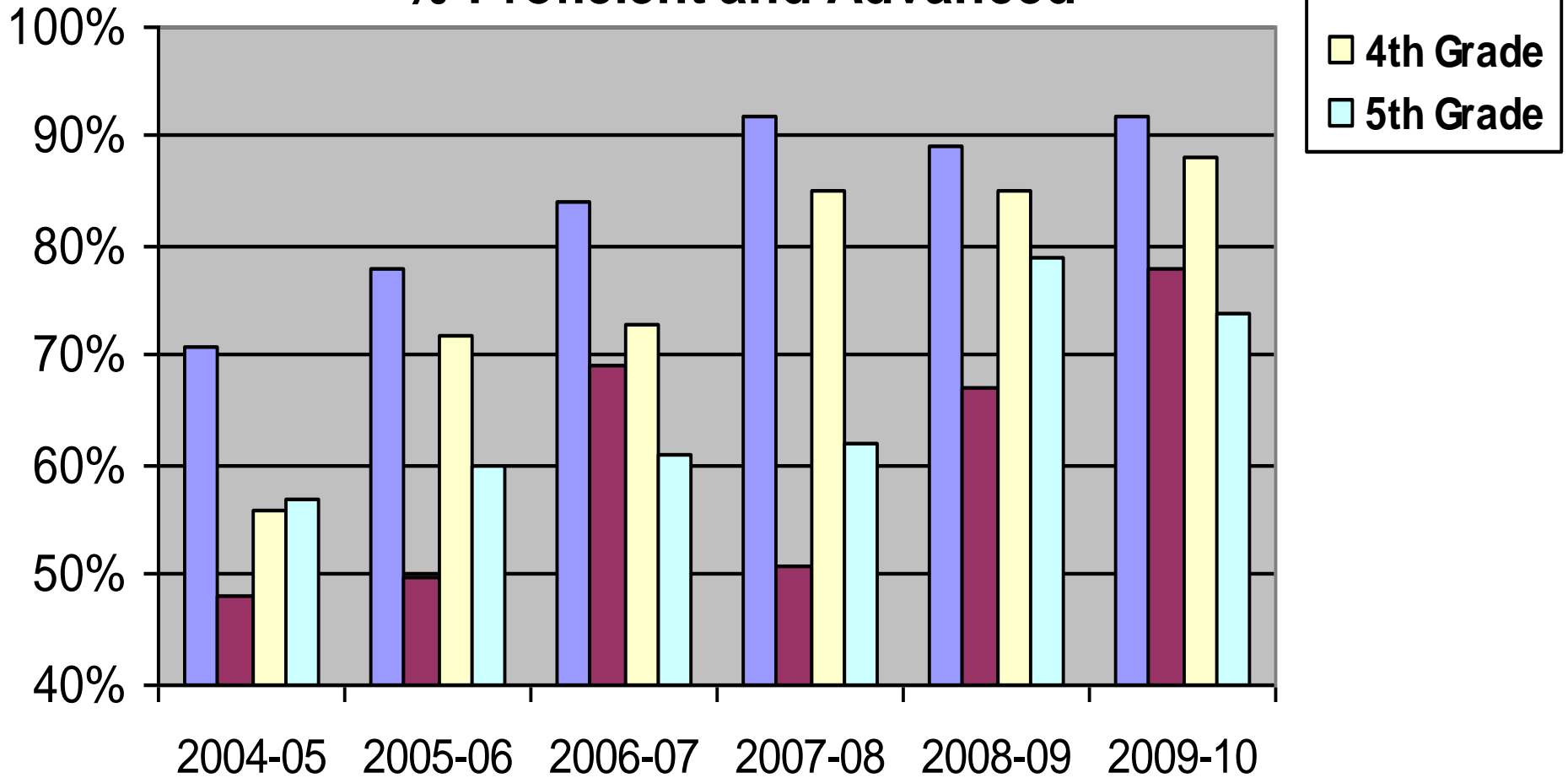
- **83% Advanced/Proficient (increase of 4.5%)**
- **#5 ELA Performance in District**
- **17 students out of 390 were FBB or BB (4%)**

Math Data Review

- **96% Advanced/Proficient (increase of 1.5%)**
- **Highest Math Proficiency in District**
- **4 students out of 391 were FBB or BB (1%)**

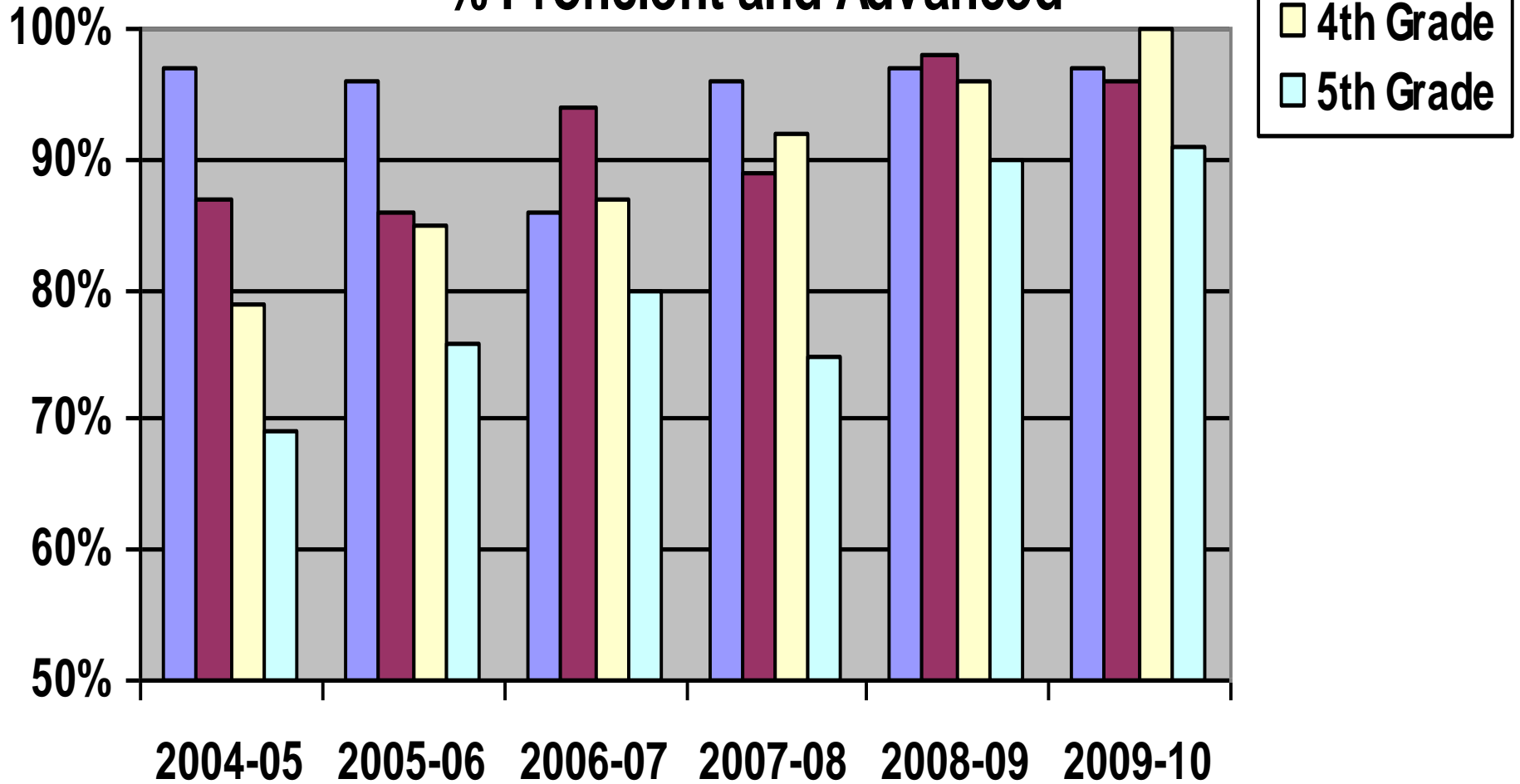
Lincoln ELA CST Scores 2004-2010

% Proficient and Advanced



Lincoln Math CST Scores 2004-2010

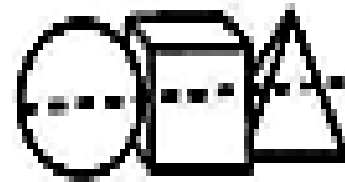
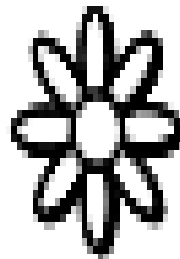
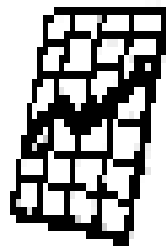
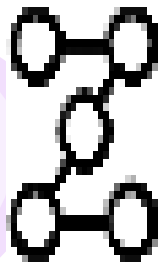
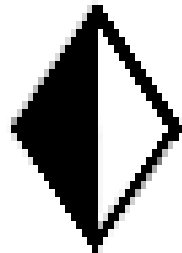
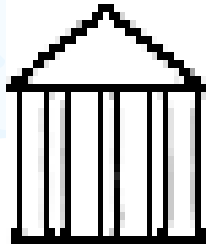
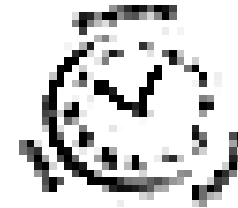
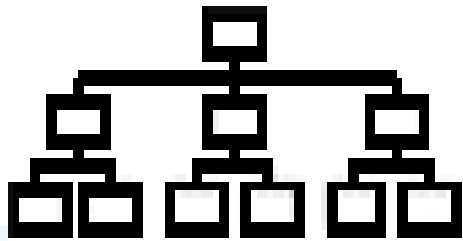
% Proficient and Advanced



Instructional Focus Areas

- **Standards Based Instruction** –
(data analysis, focused objectives and outcomes)
- **Critical Thinking – Thinking Maps & Icons of Depth and Complexity**
- **Student Engagement – Kagan Structures**
- **English Language Development**

Kaplan Icons of Depth and Complexity



Professional Development Focus

- **Professional Learning Communities**
- **3 Wednesdays per month – PLC circuit time**
- **PLC time is sacred – loose/tight structure – norms, agendas, minutes**

Enhanced Curriculum

- **Focused Science Curriculum**
- **Overnight Camping Experiences**
- **K-3 Cantonese Bilingual Program**
- **Experienced After-School Program (OASES, Explorer- OPR)**
- **Music Program – Chinese Orchestra & Choral Instruction**
- **Physical Education – Playworks**