

Living Schoolyards for Oakland Initiative Update

November 12, 2020

Alejandra Chiesa

Bay Area Program Director, The Trust for Public Land

Trudy Garber

Sr. Program Manager, The Trust for Public Land

Michelle Oppen

Health and Wellness Coordinator, OUSD

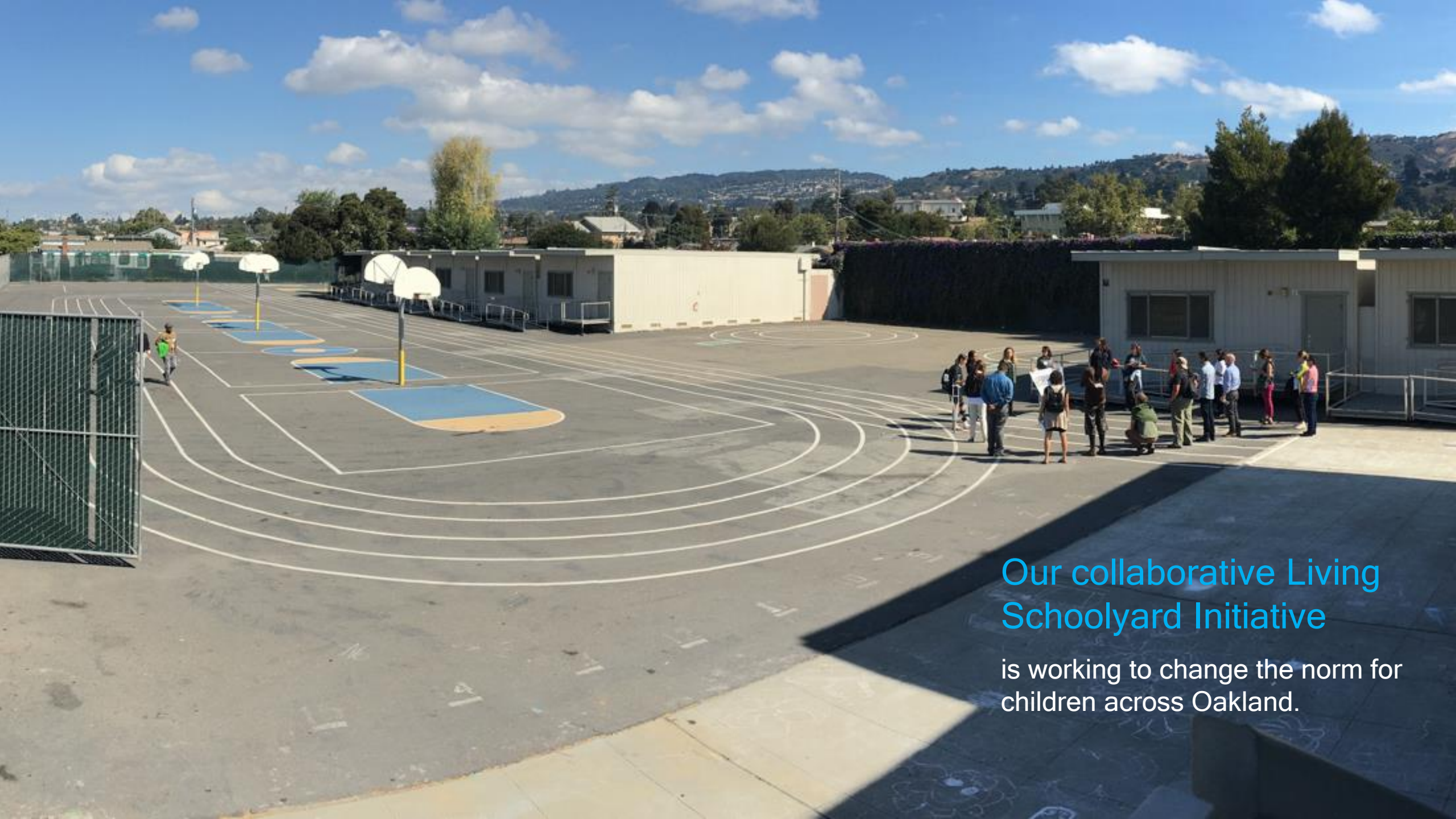
Tadashi Nakadegawa

Director of Facilities, OUSD



**OAKLAND UNIFIED
SCHOOL DISTRICT**
Community Schools, Thriving Students





Our collaborative Living Schoolyard Initiative

is working to change the norm for children across Oakland.

Benefits of Living Schoolyards

Equity



Learning

Environmental literacy, increased attention span, and academic performance.



Health and Wellness

Increased physical activity, decreased asthma, social-emotional wellness, mental health, and healthy eating habits.



Community

Family engagement, community cohesion, and increased stewardship.



Environmental Health

Reduced urban heat island effect, and improved stormwater management, cleaner air and water.

What we have accomplished

- **Partnership Agreement** between OUSD, TPL and GSA (2017)
- **Board Policy** on Living Schoolyards BP 7110.1 (2019)
- Collaborated on **Facilities Master Plan** to include Living Schoolyards (2020)
- **Fundraising**, both public and private – over \$4 million secured (ongoing)
- **Pilot Projects** (ongoing)



OAKLAND UNIFIED
SCHOOL DISTRICT
Community Schools, Thriving Students



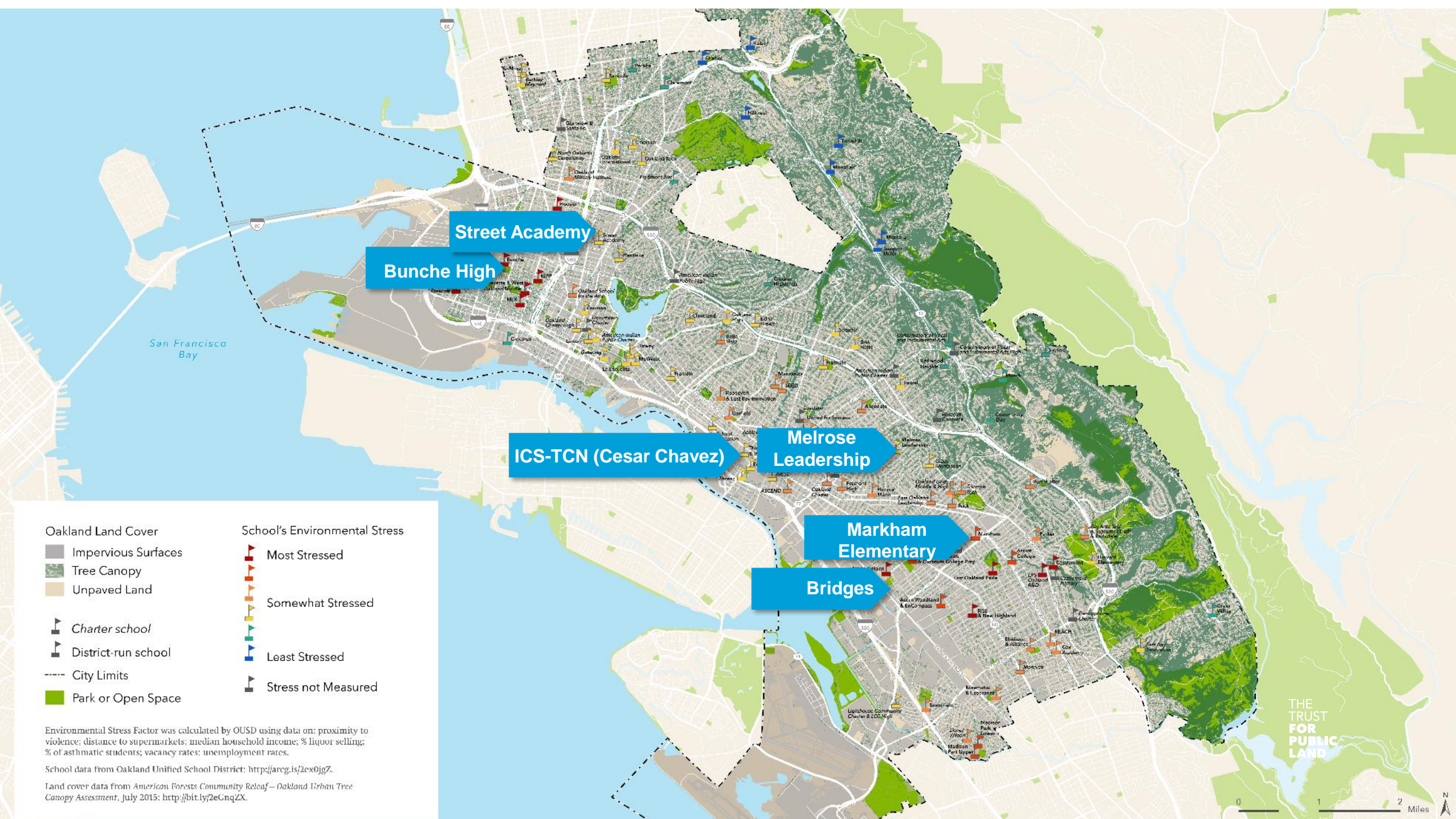
Board Policy | BP 7110.1

Vision: All OUSD school grounds will have living schoolyards

Implementation:

- Accountability and Oversight
- Guidelines and Standards
- Facilities Planning and Management
- Stewardship
- Joints Use
- Funding





Oakland Land Cover

- Impervious Surfaces
- Tree Canopy
- Unpaved Land

- Charter school
- District-run school
- City Limits
- Park or Open Space

School's Environmental Stress

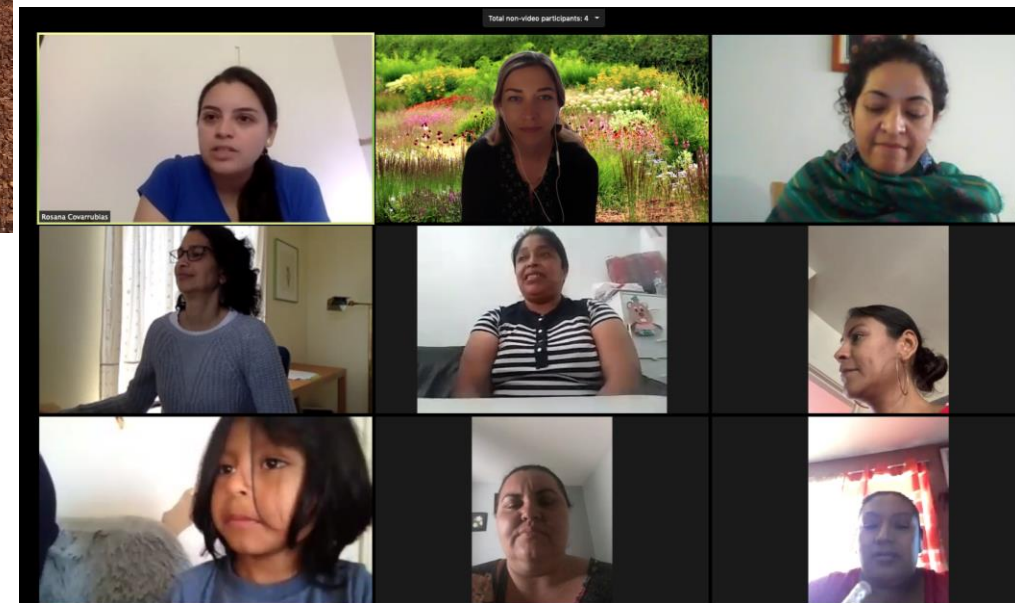
- Most Stressed
- Somewhat Stressed
- Least Stressed
- Stress not Measured

Environmental Stress Factor was calculated by OUSD using data on: proximity to violence; distance to supermarkets; median household income; % liquor selling; % of asthmatic students; vacancy rates; unemployment rates.

School data from Oakland Unified School District: <http://arcg.is/2ex0jgZ>.

Land cover data from American Forests Community Relief - Oakland Urban Tree Canopy Assessment, July 2015: <http://bit.ly/2eCnqZX>.

Community Engagement





ICS/TCN before

- ① CENTRAL GATHERING SPACE
- ② RAISED TREE WELL
- ③ PICNIC TABLE
- ④ CONCRETE SEATWALL
- ⑤ NATURE PLAY AREA WITH LOG CLIMBERS
- ⑥ SALVAGED LOG EDGING
- ⑦ WOOD FIBER SURFACE
- ⑧ STUMPS
- ⑨ PLAY LAWN WITH FENCE
- ⑩ BENCH WITH BACK
- ⑪ FRUIT TREE ORCHARD
- ⑫ DRY CREEK
- ⑬ LEARNING GARDEN
- ⑭ OUTDOOR CLASSROOM
- ⑮ GARDEN SHED
- ⑯ RAISED GARDEN BEDS
- ⑰ BASKETBALL COURT
- ⑱ WALL BALL COURT
- ⑲ FOUR SQUARE COURTS
- ⑳ EXISTING PLAY STRUCTURE



ICS/TCN plan



ICS/TCN construction



Markham before

NEW ELEMENTS

- | | | | | |
|---------------------------|--|---|-----------------------|---|
| 1 SHADED PATHWAY | 5 GREEN BUFFER OF TREES AND SHRUBS ALONG STREET | 9 OUTDOOR CLASSROOM WITH WHEELCHAIR SPACE | 13 PICNIC TABLES | 17 SENSORY PLANTING BED |
| 2 ARTIFICIAL TURF FIELD | 6 PLAY STRUCTURE ON RUBBER SAFETY SURFACE | 10 STUMP SPIRAL PLAY FEATURE | 14 TRELLIS WITH VINES | SHRUB PLANTING AREA |
| 3 LOG SEATING AREA | 7 EXPANDED GARDEN AND ORCHARD (COMPLETED) | 11 JUMPING STUMPS | 15 INTERPRETIVE SIGN | NATURE PLAY AREA WITH TREES ON WOOD FIBER |
| 4 SHADE TREE WITH SEATING | 8 SHADED SEATING AREA WITH MUSIC INSTRUMENTS (COMPLETED) | 12 MOSAIC ANIMAL CLIMBER ON RUBBER SAFETY SURFACE | 16 BENCH WITH BACK | STABILIZED DECOMPOSED GRANITE |



Artificial Turf Field



Vine Trellis



Log Seating



Shade Tree with Seating



Willow Fencing and Shrub Planting Area



Stump Spiral



Mosaic Animal

Markham plan



Markham phase 1



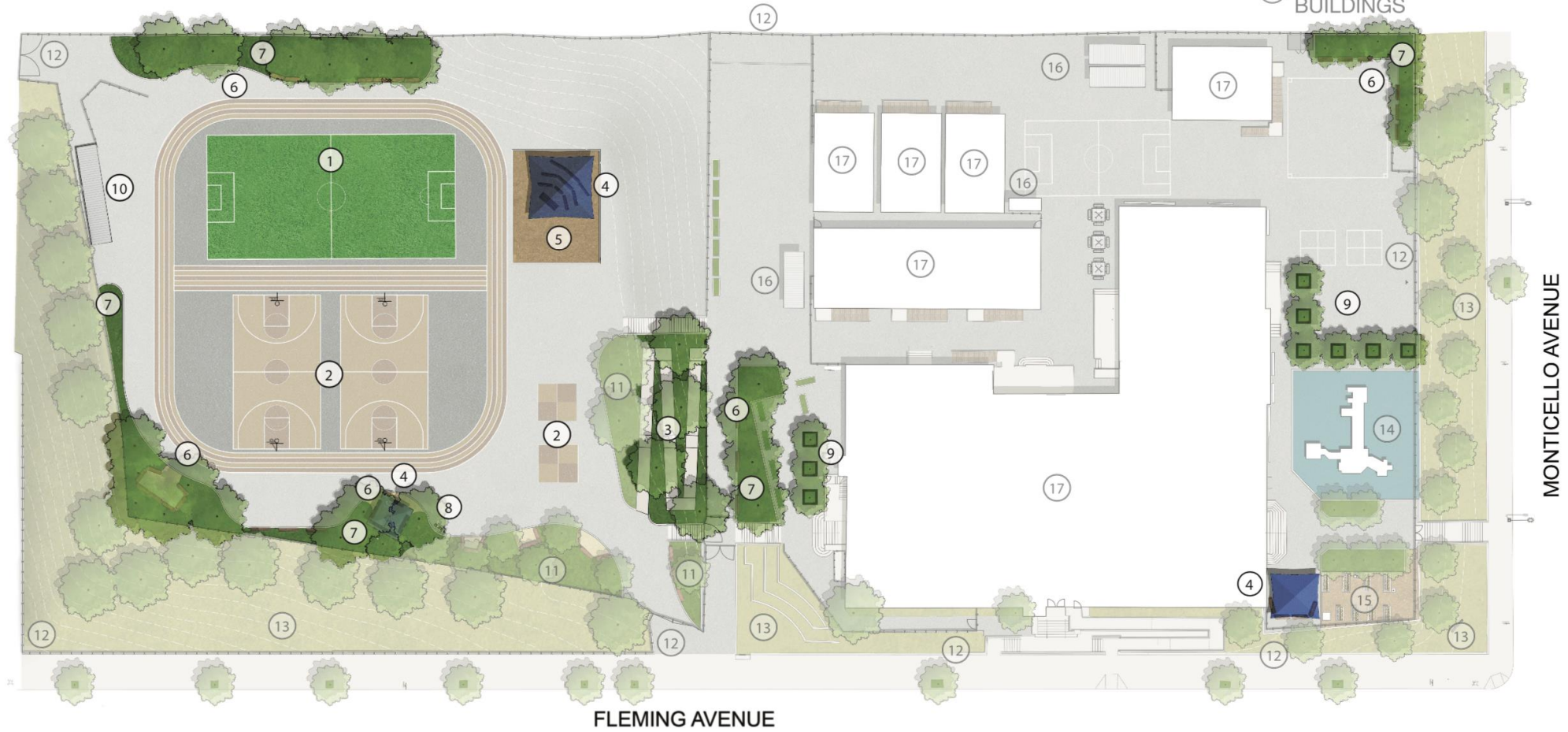
Melrose before

- ① NEW TURF SOCCER FIELD
- ② NEW PAINTED SPORT COURTS AND TRACK
- ③ NEW RAMP
- ④ NEW SHADE STRUCTURE

- ⑤ NEW PERVIOUS SURFACE
- ⑥ NEW SHADED SEATING
- ⑦ NEW PLANTING AREA
- ⑧ NEW WATER FOUNTAIN

- ⑨ NEW TREE WELLS
- ⑩ RELOCATED SHED
- ⑪ EXISTING PLANTING AREA
- ⑫ EXISTING PERIMETER FENCE

- ⑬ EXISTING EXTERIOR PLANTING
- ⑭ EXISTING PLAY EQUIPMENT
- ⑮ EXISTING EDUCATIONAL GARDEN
- ⑯ EXISTING SHEDS
- ⑰ EXISTING SCHOOL BUILDINGS



Melrose plan



Melrose phase 1

Next steps

- Partnership Agreement Amendment
- Guidelines and Standards for Living Schoolyards in Oakland
- Maintenance Commitment
- Community Use
- Finish pilots and build a pipeline of projects
- Private and public fundraising

Guidelines and Standards

- TPL hired expert consultant team- Cam Collyer with Evergreen and Bay Tree Design.
- 1 year process to develop standards for design, implementation and stewardship of Oakland living schoolyards.

Landscape and *Child* Development

A Design Guide for Early Years–Kindergarten Play-Learning Environments



Second Edition 2013

Stewardship and Maintenance

\$300,000 commitment to maintenance and community use support

\$40,000 grant for PD for teachers, gardeners, and stewardship manual



Project Pipeline

City-wide Living Schoolyards Masterplan

- Site Condition
- Equity
- Readiness
- Alignment with other planned improvements



Funding

- Close to 4 million raised to date
- LOCAL: Measure Y
- STATE:
 - Urban Greening Program 2020 (TPL's application for Bridges has made it to next round)
 - Potential Urban Greening in the Cap and Trade Expenditure Plan (anticipated to be introduced by Governor in December)
 - Prop 68 Statewide Parks Program—due March 2021
 - Potential future bonds introduced next year
- PRIVATE FUNDING



Questions?