



OAKLAND UNIFIED SCHOOL DISTRICT

Community Schools, Thriving Students



School Portfolio Management: Grade Configuration Change v5



La Escuelita Elementary:
K-8

Anticipated Start: 2013-14

Strategy for maximizing assets

Grade Configuration Change

Grade configuration change represents the expanding of a school's grade configuration to serve either grades PK-8, PK-12 or 6-12. Approach would expect each school to grow each grade one year at a time. The proposal expects to analyze annually the educational benefits of the expanded grades and consider the educational benefits of additional grade configuration changes in other school settings. Grade configuration change proposals included here are intended to expand quality programs.

Strategy for maximizing assets

Recommendation:

Approval of a grade configuration change for La Escuelita Elementary to serve students in grades K to 8, anticipated to begin July 1, 2013.

- La Escuelita is anticipated to maintain its upcoming 5th grade class to become its first 6th grade class for the 2013 year, serving approximately 64 students. Each subsequent year they will add an additional grade level until the 2015-16 school year when the school would reach capacity, serving grades K to 8. The soon-to-be-completed facility will house the Yuk Yau preschool in the same complex as La Escuelita.
- The middle school program will serve two groups each in 6th grade, 7th grade, and 8th grade.

Restructuring Proposal: Grade Configuration Change Planning

SUMMARY:

Grade Configuration Change School Design Team will develop Expanding School Plans

PLAN - PART A: DUE December 1, 2011

- Framing of compelling rationale for expansion
- Description of how the current program/s meet goals of the Strategic Plan
- Identify value-add components of program/s
- Identify Key Practices
- Complete Feasibility Analysis (*staffing, enrollment, facilities*)

DECEMBER 14, 2011 Decision-Making re: Grade Configuration for 2012

**JANUARY 25, 2012 Decision-Making re: Grade Configuration changes to take place
no sooner than 2013**

PLAN - PART B: *If approved* DUE April 1, 2012

- Expanding-up program planning
- Develop implementation plan
- Operationalizing of program, i.e. staffing, budget, enrollment
- Identify central supports needed
- Identify structural supports needed

Evaluation Criteria

Grade Configuration Change: Evaluation Criteria

CRITERIA OVERVIEW

Schools pursuing grade level expansion will be evaluated for candidacy in the following *Readiness Factors*, listed in order of significance:

STEP 1	Is there a Compelling Rationale for Grade Level Expansion
STEP 2	Is there Demonstrated Staff and Family Interest in Grade Level Expansion
STEP 3	Is there Demonstrated Leadership and Staff Capacity to Support Grade Level Expansion Planning and Implementation
STEP 4	What are the results of the Analysis of Facility Capacity to Support Grade Level Expansion
STEP 5	What are the results of the Analysis of Demographics and Enrollment Implications

EVALUATION



Restructuring Proposal: Grade Configuration Change Planning

STEP 4:

What may be the impact on school facilities?

Each school facility is being evaluated in the following four categories.

- **Category A:** Existing capacity to accommodate current grade configuration
- **Category B:** Existing capacity to accommodate new grade configuration
- **Category C:** Facility upgrades/ modifications needed to accommodate core academic program – specifically the courses needed to successfully complete the program
- **Category D:** Facility upgrades/ modifications needed to accommodate full program needs, including amenities that support extra-curricular activities, electives, and other supports and services.

Facilities Needs for La Escuelita's Grade Level Expansion:

The Facilities Department generated preliminary designs to construct a middle grades space within current plans for the educational complex that have been reviewed by members of the La Escuelita community. Construction would be dependent on a new facilities funding base and is not currently budgeted. Expansion of the K-5 program will rely on new facilities funding and reflect construction timelines.

Estimated Cost: \$25 million

Restructuring Proposal: Grade Configuration Change Planning

STEP 5:

What are the results of the Analysis of Demographics and Enrollment Implications?

Transition Location	Percentage of Students	Number Based on 64 6 th grade students annually	Number of Middle Grades Students in Attendance Boundary
Westlake	36%	24	702
Roosevelt	6%	4	819
Edna Brewer	6%	4	468
Claremont	6%	4	186
Retain from leaving district*	36%	24	

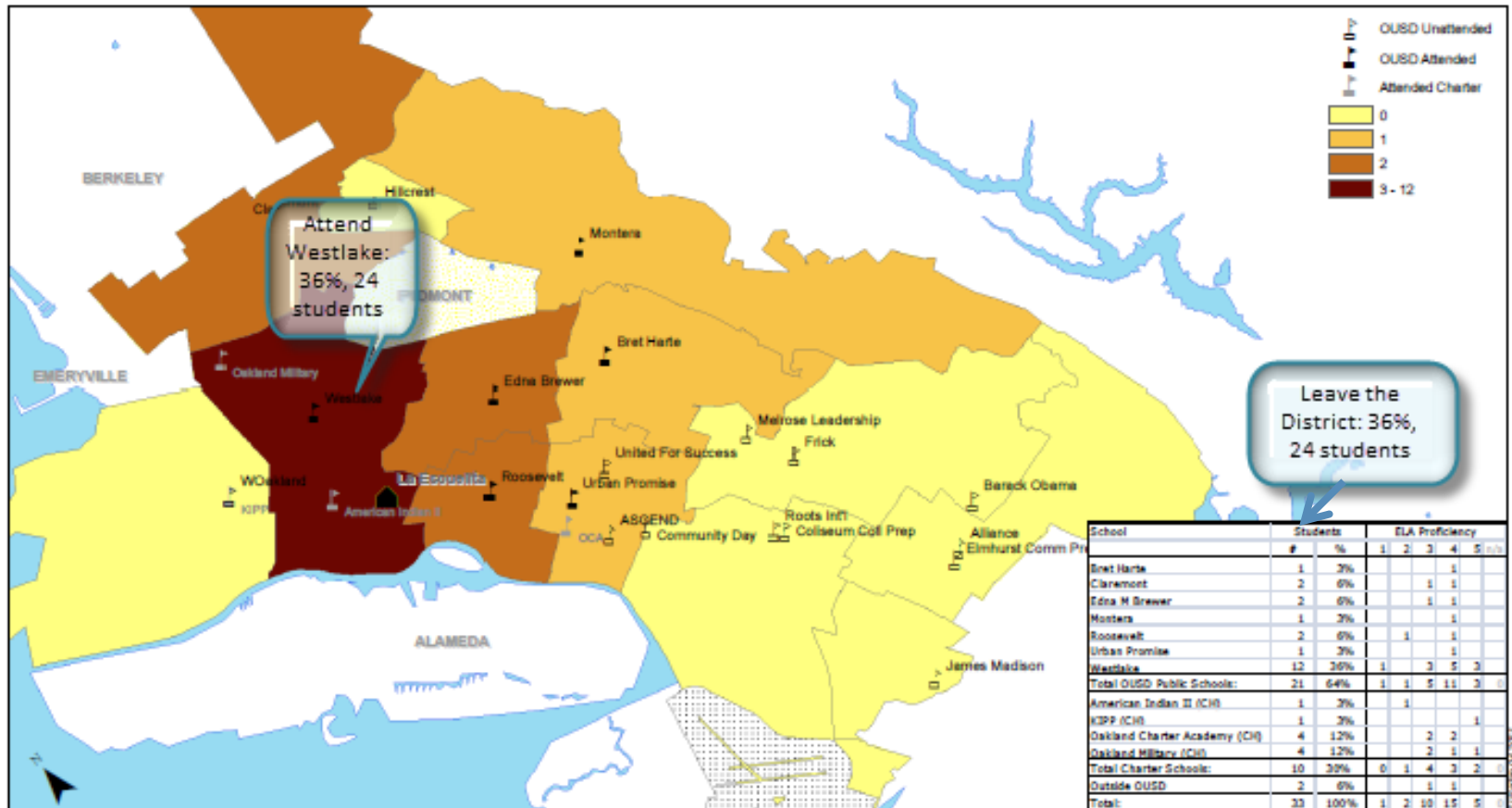
*As many as 24 students held within OUSD from 6-8th grade that would otherwise attend charter or non-District schools.

Results based on transition data from 2009-10 to 2010-11 that tracks where La Escuelita 5th graders go after elementary school.

What are the results of the Analysis of Demographics and Enrollment Implications?



2009-2010 to 2010-2011 Elementary to Middle School Transition: Which middle schools did the La Escuelita 5th graders go to?

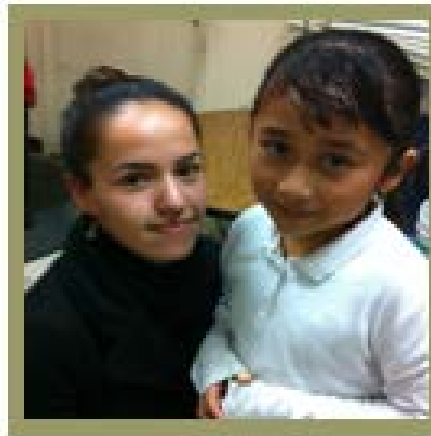
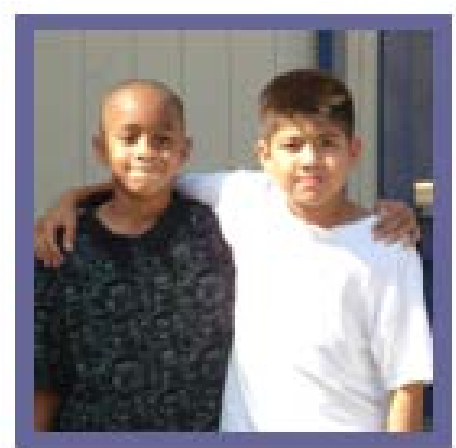


Note: Charter schools do not operate with an "attendance boundary" and may draw equally from throughout Oakland.

Source: OUUSD RAD Transition Study

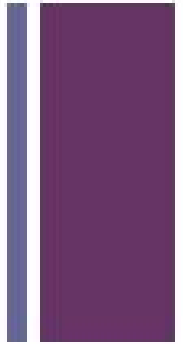
ELA Proficiency Scores:
 1=Far below basic
 2=Below basic
 3=Basic
 4=Proficient
 5=Advanced

K - 8 Expansion



**La Escuelita
Elementary School**

Our Mission



Our mission is to prepare students to reach their full academic potential and be confident, responsible contributors to a multi-cultural society.

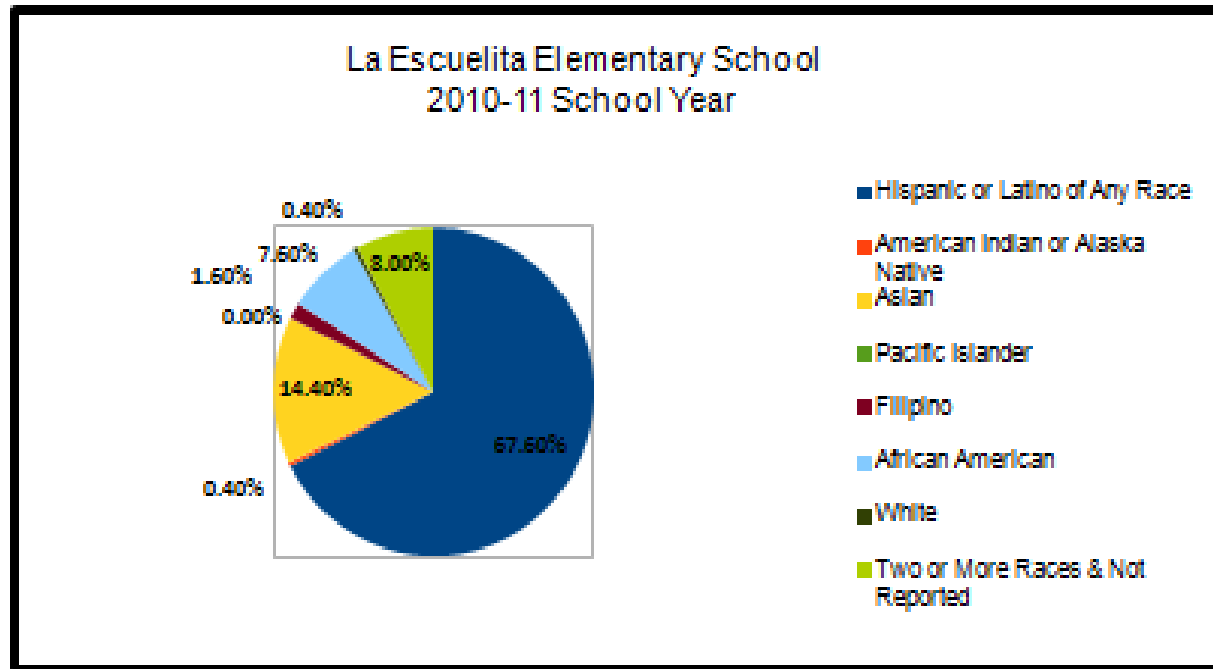
Who are our 250 students?



Who are our 250 students?

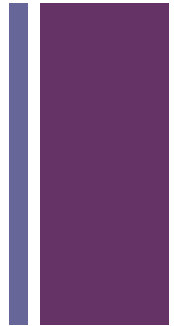
241 - in Bilingual and English-only classes

9 - in a Special Day Class



Hispanic or Latino of Any Race	American Indian or Alaska Native	Asian	Pacific Islander	Filipino	African American	White	Two or More Races & Not Reported	Total
169	1	36	0	4	19	1	20	250

Who are our teachers?



They are an experienced, dedicated, unified team. They do whatever needs to be done (with whatever resources they have) to meet the needs of our diverse group of students. They respond to challenge and crisis with resiliency and determination... and don't let kids fall through the crack.

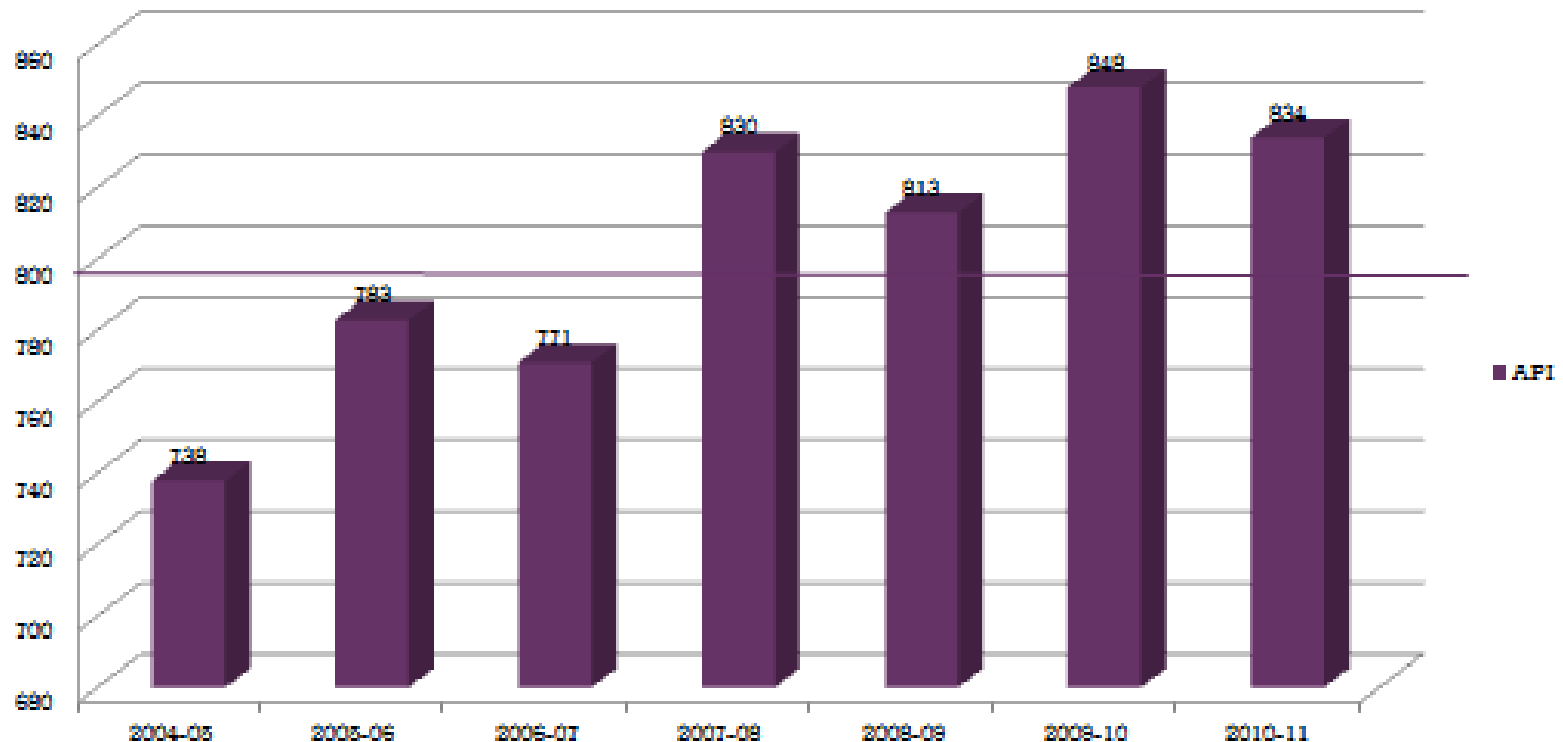
La Escuelita's API

2000 - 490

2011 - 834



La Escuelita API





Our families and teachers are interested in expansion!

- There's a historical interest in K-8. (that parent and community events have helped reveal)
- Our staff has expressed a strong interest in K-8.
- Parents and staff have visited K-8 and K-12 schools.
- With increased student enrollment next year (250 to 360), a greater number of students can benefit from a K-8 experience in a successful school.

La Escuelita is committed to building a Full Service Community School.

- Vision for continuum and participation with Pre-K-12 collaboration
- Vision for full Bilingual Program and Dual Immersion
- Future Health Center Collaborative with Dewey and Metwest
- Future Farmer's Market
- EBAYC After School Partnership
- Community Partners-San Francisco Opera Guild, Oakland Public Library, Oakland Museum, Lake Merritt Methodist Church, Regeneration Church

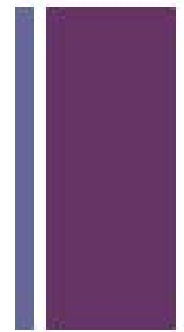
We teach with intention.

"Students learn what they care about, from people they care about and who, they know, care about them"

- Barbara Harrell Carson, 1996



We're La Escuelita.



Strategy for maximizing assets

Recommendation:

Approval of a grade configuration change for La Escuelita Elementary to serve students in grades K to 8, anticipated to begin July 1, 2013.

- La Escuelita is anticipated to maintain its upcoming 5th grade class to become its first 6th grade class for the 2013 year, serving approximately 64 students. Each subsequent year they will add an additional grade level until the 2015-16 school year when the school would reach capacity, serving grades K to 8. The soon-to-be-completed facility will house the Yuk Yau preschool in the same complex as La Escuelita.
- The middle school program will serve two groups each in 6th grade, 7th grade, and 8th grade.