
The logo for the East Bay Regional Occupational Program features the words "East Bay" in a large, bold, black serif font. Below it, the words "Regional Occupational Program" are written in a smaller, black serif font. The text is overlaid on a graphic of three curved, overlapping bands in yellow, green, and blue, which sweep from the left towards the right.

East Bay
Regional Occupational Program

Overview Presentation for OUSD Board
of Education Intergovernmental
Relations Committee
November 12th 2009

East Bay Regional Occupational Program

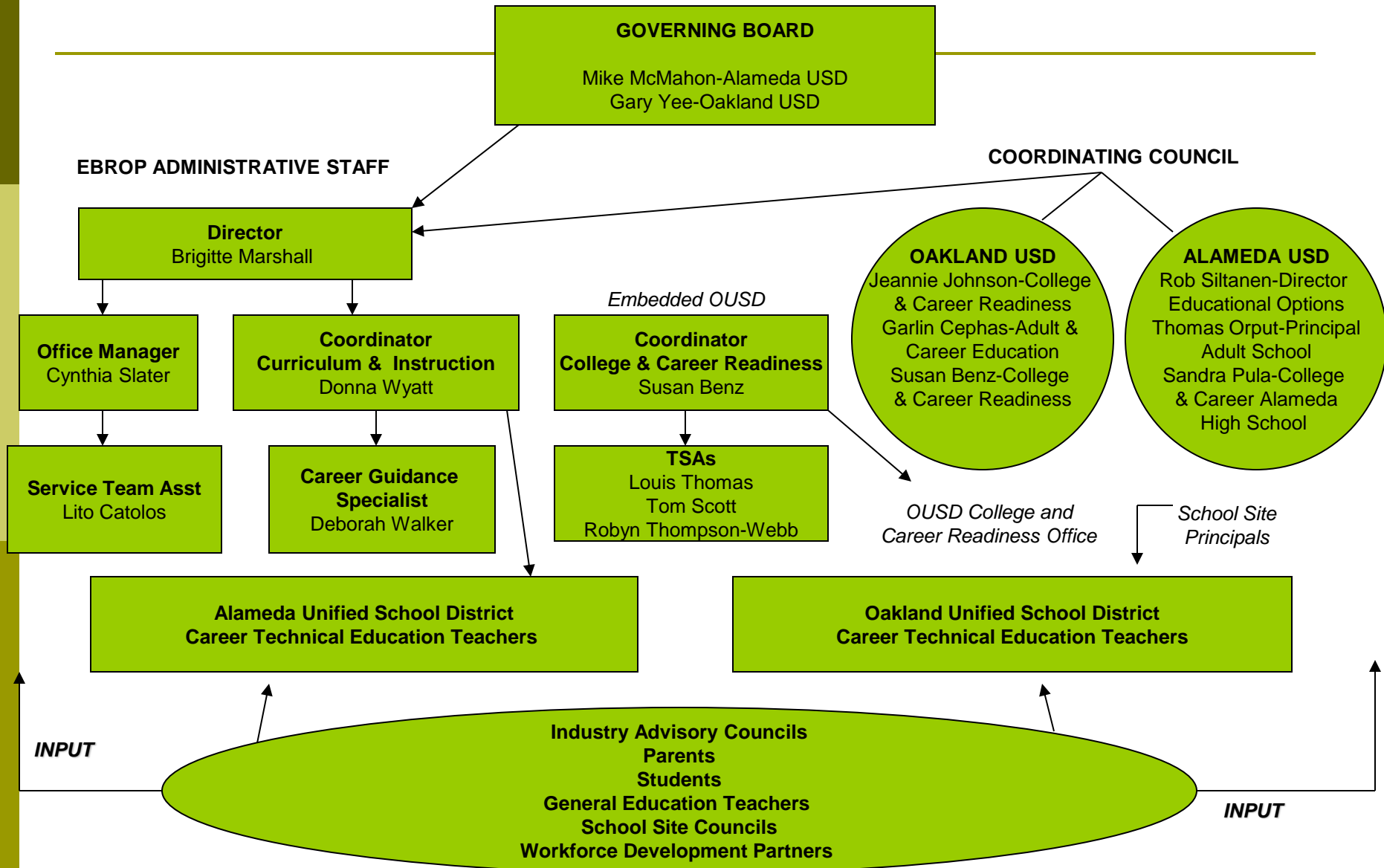
supporting

Alameda & Oakland Unified School Districts

- ❑ EBROP – a Joint Powers Agreement operating in support of Career Technical Education programming in both districts
- ❑ EBROP works in close collaboration with OUSD College and Career Readiness Office (CCRO) – we share some staff – see org chart
- ❑ 09-10 ROP funds reduced by 20%
- ❑ ADA suspended through 2013 – no growth possible, static funding for four years
- ❑ ROP funds are currently stretched beyond appropriate capacity, very limited resources to support instructional supplies and materials needs for all sections currently funded
- ❑ To maximize access to CTE opportunities for AUSD and OUSD students, EBROP cannot support sections with less than 20 students enrolled
- ❑ Program development focus through 2013
 - Alignment with labor market/growth industry trends
 - Program quality

East Bay Regional Occupational Program

Organizational Structure



2009-10 East Bay ROP Staff Functions

Job Title	Functions
0.4 Director (No cost loan from OACE)	Develop infrastructure, oversee all operations, labor management, budget management and oversight, interface with partner districts, fund development
1.0 Office Manager (No cost loan from OACE)	General support to ROP Interim Director, coordination of ROP vans, oversight of all administrative functions
1.0 Coordinator Curriculum & Instruction (At cost loan from AUSD)	Ensure instructional integrity, lead curriculum development and professional development throughout East Bay ROP
0.3 Oakland ROP Coordinator (EBROP Reimbursement to OUSD)	Support coordination of ROP classes as embedded component of Oakland CPAs, and as sequenced course offerings in Oakland High Schools

2009-10 East Bay ROP Staff Functions

Job Title	Functions
1.0 Career Guidance Specialist (At cost loan from AUSD)	Provide recruitment, business partner development and career guidance support across East Bay ROP
3 x .33 ROP Liaisons (EBROP Reimbursement to OUSD)	Coordinate ROP activities across 18 Oakland High Schools
1.0 Service Team Assistant (At cost loan from OUSD)	General administrative and clerical support – purchasing, logistics, attendance

2009-10 East Bay ROP

- 25.8 CTE Teacher FTE supporting 127 CTE Sections (11th and 12th grade) in 12 different industry sectors
 - 11.2 AUSD FTE supporting 50 sections
 - 14.6 OUSD FTE supporting 77 sections
- 2891 students currently served
 - 1177 AUSD students currently served
 - 1714 OUSD students currently served
 - 28 students per class would provide access to a total of 3,556 students

Comprehensive Course Review

□ 52302.3

Every career technical course or program offered by school districts sponsoring a regional occupational center or program shall be reviewed every two years by the appropriate governing body to assure that each course or program does all of the following:

- Meets a documented labor market demand
- Does not represent unnecessary duplication of other manpower training programs in the area
- Is of demonstrated effectiveness as measured by the employment and completion success of its students
- Any course or program that does not meet the requirements and the standards promulgated by the governing board shall be terminated within one year.

Current EBROP Course Offerings by Industry Sector and Career Pathway

- ▣ See comprehensive handout

California Occupational Trends – Fastest Growing Occupations East Bay Area 2006-2016

by California Career Technical Education Industry Sectors

- ❑ Health Science and Medical Technology Sector
- ❑ Information Technology Sector
- ❑ Education, Child Development and Family Services Sector
- ❑ Arts, Media and Entertainment Sector

California Occupational Trends – Fastest Growing Occupations East Bay Area 2006-2016

by California Career Technical Education Industry Sectors

□ Health Science and Medical Technology Sector

- Veterinary Technologists and Assistants
- Home Health Aides
- Pharmacy Technicians
- Physical Therapy Assistants
- Licensed Vocational Nurses
- Dental Hygienists
- Dental Assistants

□ Information Technology Sector

- Computer Software Engineer
- Data Systems Analysts
- Data Base Administrators
- Computer Systems Analysts

California Occupational Trends – Fastest Growing Occupations East Bay Area 2006-2016

by California Career Technical Education Industry Sectors

□ Education, Child Development and Family Services Sector

- Teachers, Secondary, various disciplines
- Teachers, Postsecondary, various disciplines
- Marriage and Family Therapists
- Law Teachers
- Mental Health and Substance Abuse Social Workers

□ Arts, Media and Entertainment Sector

- Multi-Media Artists and Animators
- Computer Software Engineers, Applications
- Audio Video Communications Engineers

East Bay Regional Occupational Program

EBROP

*East Bay Regional Occupational Program
Woodstock Education Center
1900 Third Street, Portable 23
Alameda, CA 94501
Tel: 748 4012*

- ❑ *Brigitte Marshall - Director X 233*
- ❑ *Donna Wyatt - Curriculum and Instruction Coordinator X 234*
- ❑ *Deborah Walker - Career Guidance Specialist X 231*
- ❑ *Cynthia Slater - Office Manager X 232*
- ❑ *Lito Catolos - Service Team Assistant X 230*
- ❑ *Susan Benz - Oakland Career Readiness Coordinator
Tel: 597 3791*
- ❑ *Robin Thompson-Webb, Louis Thomas, Tom Scott
Oakland Teachers on Special Assignment Tel: 597 3791*