

Board Office Use: Legislative File Info.	
File ID Number	12-2600
Committee	Facilities
Introduction Date	10-10-2012
Enactment Number	12-2569
Enactment Date	10/10/2012



OAKLAND UNIFIED
SCHOOL DISTRICT

Memo

To Board of Education

From Tony Smith, Ed.D., Superintendent
Timothy White, Associate Superintendent, Facilities Planning and Management

Board Meeting Date October 10, 2012

Subject Division of Facilities Planning and Management P.O's. Less than \$50,000.00

Action Requested: Ratification by the Board of Education of the attached contracts for the Division of Facilities Planning and Management.

Name	Total	Fund	P.O.	Site	Date	City
Advanced Voice & Data	\$4,468.26	Measure B	P.O.	Highland New Classroom Building	6-28-2012 thru 7-6-2012	Concord
ALMA Strategies	\$14,850.00	Measure B	P.O.	Fremont HS	6-1-2012 thru 5-31-2013	San Francisco
Approved Maintenance	\$800.00	Developer Fees	P.O.	La Escuelita Educational Center	9-5-2012 thru 12-31-2012	Oakland
Associates Comfort Systems	\$9,100.00	Special Revenue Fund	P.O.	Various Move Management	7-1-2012 thru 12-31-2012	San Leandro
BA Morrison	\$2,000.00	Measure B	P.O.	Grass Valley ES Portable Installation	8-20-2012 thru 12-30-2012	Castro Valley
Bayside Pest Control	\$15,660.00	Developer Fees	P.O.	Facilities	7-1-2012 thru 6-20-2013	El Cerrito
Bobbie's Permit Service	\$5,563.00	Measure B	P.O.	Grass Valley ES Portable Installation	8-9-2012 thru 10-18-2012	Coarsegold
California Department of Education	\$8,498.89	Measure B	P.O.	Highland New Classroom Building	9-13-2012 thru 12-30-2012	Sacramento
CDW Government	\$65,859.19	Developer Fees	P.O.	La Escuelita Educational Center	8-15-2012 thru 10-15-2012	Chicago, IL
CDW Government	\$67,205.05	Measure A	P.O.	La Escuelita Educational Center	8-15-2012 thru 10-15-2012	Chicago, IL
CEL	\$6,510.00	Measure B	P.O.	Piedmont Portable Installation	7-30-2012 thru 9-1-2012	San Ramon



OAKLAND UNIFIED SCHOOL DISTRICT

Clark's Home & Garden, Inc.	\$1,988.49	County School Facilities Fund	P.O.	King Estates Seismic Retrofit AB-300	8-28-2012 thru 2-28-2013	Hayward
Comco Sheet Metal Company, Inc.	\$7,013.13	Special Revenue Reserve	P.O.	Marshall School	9-12-2012 thru 11-12-12	Oakland
Commercial Systems	\$4,388.00	Measure B	P.O.	Urban Promise Multi-Purpose Building	5-20-2012 thru 8-1-2012	San Carlos
Corovan	\$74,472.54	Special Revenue Reserve	P.O.	Lakeview (School Closure)	8-1-2012 thru 6-30-2012	Poway
Creation Engine, Inc.	\$869.73	Measure A	P.O.	Facilities	9-11-2012 thru 10-11-2012	Mountain View
Del Monte Electric Co.	\$7,500.00	Measure B	P.O.	Montera MS Modernization	8-23-2012 thru 12-30-2012	Dublin
DGC Services	\$3,200.00	Measure B	P.O.	Jefferson New Building	7-30-2012 thru 11-30-2012	Dublin
Douglas Parking	\$2,650.00	Special Revenue Fund	P.O.	Lakeview ES	5-1-2011 thru 6-30-2012	Oakland
Energy Systems	\$768.00	Developer Fees	P.O.	La Escuelita Educational Center	6-19-2012 thru 8-19-2012	Stockton
Eric Thomas & Associates	\$7,900.00	Measure A	P.O.	Facilities	8-15-2012 thru 8-15-2012	Grand Ledge, MI
Eric Young	\$375.00	Measure A	P.O.	Facilities	6-27-2012	Oakland
Eric Young	\$150.00	Measure A	P.O.	Facilities	8-3-2012 thru 8-3-2012	Oakland
Eric Young	\$1,200.00	Measure A	P.O.	Facilities	8-10-2012 thru 8-10-2012	Oakland
Fire Alarm Security Services	\$984.00	Measure B	P.O.	Grass Valley ES Portable Installation	8-27-2012 thru 8-27-2014	Aptos
First Alarm	\$2,480.00	County School Facilities	P.O.	La Escuelita Educational Center	8-1-2012 thru 10-1-2012	San Jose
First Alarm	\$3,867.00	Measure B	P.O.	La Escuelita Educational Center	9-6-2012 thru 11-6-2012	San Jose
Gary Doupnik Manufacturing	\$39,000.00	Measure B	P.O.	Lowell Modernization	6-25-2012 thru 7-2-2013	Loomis
Globe Plumbing Supply Co.	\$1,871.77	Developer Fees	P.O.	La Escuelita Educational Center	6-19-2012 thru 8-19-2012	Oakland
Graham Tree Service, Inc.	\$12,000.00	Developer Fees	P.O.	La Escuelita Educational Center	7-5-2012 thru 9-5-2012	San Leandro
High-Tech Electric	\$9,093.00	Developer Fees	P.O.	La Escuelita Educational Center	8-10-2012 thru 9-30-2012	Clovis
High-Tech Electric	\$10,350.00	Country School Facilities	P.O.	La Escuelita Educational Center	9-4-2012 thru 12-31-2012	Clovis



OAKLAND UNIFIED
SCHOOL DISTRICT

	J&R Fence, Inc.	\$1,800.00	Measure B	P.O.	Grass Valley ES Portable Installation	9-6-2012 thru 12-31-2012	San Leandro
	Larm's Building & Garden Supply, Inc.	\$111.73	Developer Fees	P.O.	La Escuelita Educational Center	6-20-2012 thru 8-20-2012	Oakland
	Lee's Signs	\$835.20	Measure B	P.O.	Madison Football and Multi-Use Field	7-23-2012 thru 9-23-2012	Oakland
	Mobile Modular Management Corp.	\$1,250.00	Measure B	P.O.	Piedmont Portable Installation for Library and Science Room	7-19-2012 thru 8-1-2012	Livermore
	North American Fence & Railing, Inc.	\$750.00	Measure B	P.O.	Roosevelt MS Modernization	8-21-2012 thru 6-1-2012	Oakland
	Optus, Inc.	\$164.43	Developer Fees	P.O.	La Escuelita Educational Center	6-19-2012 thru 8-19-2012	Jonesboro, AR
	PG&E	\$1,165.24	Measure B	P.O.	Montclair Interim Housing	8-2-2011 thru 8-1-2012	Stockton
	Ray's Electric	\$49,000.00	Measure B	P.O.	Piedmont Portable Installation for Library and Science Room	7-2-2012 thru 12-31-2012	Oakland
	Ray's Mobile Modular Service	\$2,400.00	Measure B	P.O.	Grass Valley ES Portable Installation	8-1-2012 thru 9-30-2012	Bryon
	Redgwick Construction	\$19,320.00	Measure B	P.O.	Sobrante Park Modernization	8-16-2012 thru 10-15-2012	Oakland
	Redwood Engineering Construction	\$49,900.00	Measure B	P.O.	Grass Valley ES Portable	6-14-2012 thru 12-30-2012	Redwood City
	Reed Brothers	\$675.00	Developer Fees	P.O.	Metwest Educational Center	8-15-2012 thru 10-15-2012	Oakland
	Robles Communications, Inv.	\$5,037.50	Special Revenue Fund	P.O.	Melrose Leader Academy	8-2-2012 thru 10-2-2012	San Leandro
	SGI Construction Mangement	\$19,999.00	Developer Fees	P.O.	Metwest Educational Center	7-20-2012 thru 9-20-2012	Pasadena
	SJ General Building Maintenance Inc.	\$2,250.00	Measure B	P.O.	Grass Valley ES Portable Installation	8-1-2012 thru 12-1-2012	San Jose
	Summerhill Electric	\$4,210.00	Measure B	P.O.	Jefferson CDC Fire Alarm Replacement	7-12-2012 thru 1-14-2013	Oakland
	Urban Design Consulting	\$18,920.00	Measure B	P.O.	Sobrante Park Modernization	8-15-2012 thru 12-31-2012	Oakland
	Urban Design Consulting	\$15,350.00	Measure B	P.O.	Washington Modernization	8-15-2012 thru 12-31-2012	Oakland



OAKLAND UNIFIED SCHOOL DISTRICT

	<i>Valley Carports</i>	<i>\$27,890.00</i>	Measure B	<i>P.O.</i>	<i>Havenscourt New Cafeteria & Classroom Building</i>	<i>9-10-2012 thru 6-30-2013</i>	<i>Tulare</i>
	<i>Your all Day Everyday Janitorial Service</i>	<i>\$16,790.00</i>	Developer Fees	<i>P.O.</i>	<i>La Escuelita Educational Center</i>	<i>9-4-2012 thru 12-31-2012</i>	<i>San Francisco</i>

Discussion:

Among the key purposes of the District’s Facilities Master Plan is to provide an academic environment for the Oakland community that will give every student, educator, and community member using our facilities the best possible opportunity for learning.

Through implementation of the Facilities Master Plan, the District intends to improve the District’s facilities in terms of structural integrity, safety, reliability of operating (mechanical) systems, access to modern resources, number and type of appropriate laboratories and specialized instruction rooms, opportunities for physical education, and attractiveness, such that the Oakland Public Schools are second to none. Operation of the District schools under the planned approach is intended to ensure safety, cleanliness, and orderliness for all individuals participating in the learning process.

The basic facility needs of students such as proper lighting, functional roofs, noise control and well maintained buildings, not only convey the message that we value our students and teachers but may foster a sense of school pride and community ownership which may improve attitudes towards learning. The implementation of the Facilities Master Plan is our first step in that direction.

Fiscal Impact:

Various

Recommendation:

The Board of Education is requested to approve the Facilities Planning and Management contracts and Purchase Order for the OUSD school sites.

**OAKLAND UNIFIED SCHOOL DISTRICT
Department of Facilities Planning and Management
AGREEMENT REQUEST FORM**

DATE SUBMITTED: 7/23/2012
SUBMITTED BY: Mary Ledezma

SECTION I. TYPE OF AGREEMENT (PLEASE CHECK ONE BOX)

- | | |
|---|--|
| 1.) A/E (Architect and Engineers) Contract <input type="checkbox"/> | 5.) "Small" (under \$15,000.00) Construction Contract <input type="checkbox"/> |
| 2.) IOR (Inspector of Record Contract) <input type="checkbox"/> | 6.) Resolution Awarding Bid and Construction Contract <input type="checkbox"/> |
| 3.) Agreement for Professional Services - Testing Etc. <input type="checkbox"/> | 7.) Change Order <input type="checkbox"/> |
| 4.) Amendment to Agreement for Professional Services <input type="checkbox"/> | 8.) Purchase Order <input type="checkbox"/> |

Vendor Number: _____
Fiscal Year: 2012-2013
RO. Under \$50K: _____
Date Processed: 8-3-2012
To: MB 43 To DR: _____

Timothy E. White Date
Asst. Superintendent

Tadashi Nakadegawa Date
Facilities Director

SECTION II. LOCAL BUSINESS PARTICIPATION PERCENTAGE:

Local Business	Small Local Business	Small Local Resident Business	Total Percentage
0.00%	0.00%	0.00%	0.00%

SECTION III. AGREEMENT INFORMATION:

Project Name: Jefferson New Building	Project No: 06002
Vendor Name: DGC Services	Vendor Contact: Doug Chong
Vendor Phone Number: (925) 895-2316	Vendor Mailing Address: PO Box 2277 Dublin, Ca. 94568
Agreement Start and Stop Dates: Start: <u>7/10/2012</u> Stop: <u>11/30/2012</u>	Amounts: Current Contract Amount: \$0.00 Not to Exceed Amount: \$3,200.00 Revised Contract Amount: \$0.00
Has Work Started: <input type="checkbox"/> Yes <input checked="" type="checkbox"/> No If yes give an explanation: _____	Has Work Been Completed? <input type="checkbox"/> Yes <input checked="" type="checkbox"/> No Date: _____
Certificate of Insurance Attached <input type="checkbox"/> Yes <input checked="" type="checkbox"/> No	Date provided: _____

LEGISLATIVE FILE
File ID No. 12-2600
Introduction Date 10-10-2012
Enactment No. 12-2569
Enactment Date 10/18/12

Body London
President, Board of Education
10/10/12

Edgar R. Raftery, Jr., Secretary
Board of Education
10/10/12

For Construction Contracts >\$15,000, please provide or attach the following:

- Number of Bids Received, List of Bidders and Amounts (Bid Form) (Attach Bid Documents)
 - Date(s) of Bid Advertisement -
 - Date of Bid Opening -
 - Name of Architect -
 - Liquidated damages per day - \$
 - Performance Bonds Attached
 - Payment Bonds Attached
- (Sections 6 and 7 to be completed by Contract Administration department)

Scope of Work: (Needed to prepare Executive Summary) Please attach separately along with Vendor's proposal
Scope includes labor & materials to install clear plastic spikes on the innermost exterior aluminum sunshades. Spikes will be glued and strapped to the innermost aluminum blade at a total of nine (9) sunshades. Scope also includes the cost to pressure wash all building sunshades (27 total) facing 40th Avenue. Put-back of window weatherstripping to be under separate vendor.

Discussion Info: (Needed to prepare Executive Summary) Provide detailed background - Why is contract required and what is the benefit to students) - Add additional pages as needed
Large birds (crows) continue to peck-off existing window weatherstripping while perched on the innermost exterior aluminum sunshade. The aluminum sunshades are heavily coated with unsightly bird droppings.

Funding Source: Measure B

Budget Number:

RECEIVED
8-30-2012



DGC Services LLC

An Authorized Bird - B - Gone Installer

PO Box 2277, Dublin, CA 94568

(925) 828-3803 - F (925) 236-2406

www.dgc-services.com - doug.chong@gmail.com

Lic # BL-008665 - \$1 Million G.L. & \$1 Million W.C. Insurance

Customer Quote:

Oakland Unified School District

Mary Ledezma

2035 40th Ave, Oakland, CA

510-499-4447 - mary.ledezma@ousd.k12.ca.us

IMPORTANT NOTICE - DO NOT SHARE WITH OTHER VENDORS:

This e-mail message/quote, including any attachments, is intended only for the use of the individual or entity to which it is addressed and may contain information that is privileged and/or confidential. If you are not the intended recipient, please notify us immediately by replying to this message and then delete this message from your system. You are hereby notified that any use, dissemination, distribution and/or reproduction of this message and/or any attachments by unintended recipients is unauthorized and may be unlawful.

Based on my site inspection the following information and pricing is provided for your review.

We will provide uniformed, experienced staff, all necessary materials, and equipment to perform the work outlined.

"Problem Areas"

Crows are perching on top of the upper aluminum awnings and pulling out the weather strippings on the adjacent windows.

"Solution"

We will need to spike the awning rail that is closest to the window in order to discourage them pulling out the weather stripping to each window. We will use glue adhesive and zip ties to mount spikes onto each of the awning blades closest to the window. There are approximately 9 awnings that need to be serviced with spikes.

We will also quote to pressure wash each awning next to the spike work in order to clean off the crow droppings that are on all the awnings and the floor.

Cost Summary:

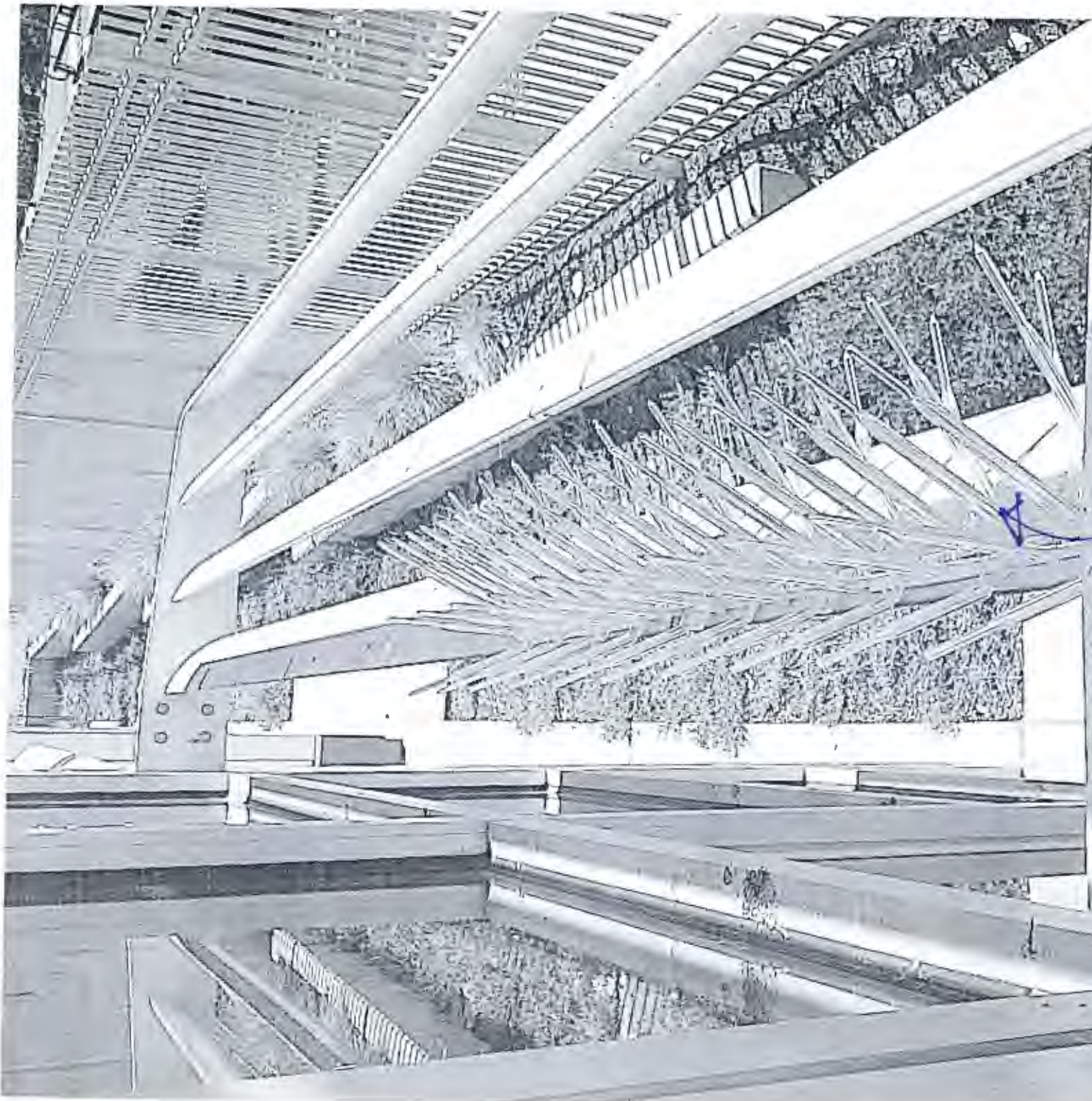
A: Total 9 Awnings spike single blade next to each window = $\$200 \times 9 = \1800 (Note Material = \$350, Labor & Warranty \$1,450)

B: Pressure wash each awning and the floor on the corner of 40th and Carrington 27 awnings total = \$900

C: Rental of 35' Articulating Boom Lift = \$500

Total: \$3,200

All spike work and netting has a 5 year warranty. Warranty includes fallen spikes or treated areas that have a reoccurring problems.



clear plastic

Modc-up of
SPIKES on SUN SHADE

7-20-12



1 40TH AVENUE EXTERIOR ELEVATION
 SCALE: 1/8" = 1'-0" NOTE: ASSEMBLY SHOWN OBLIQUE. FOR STRAIGHT ON ELEVATIONS OF ASSEMBLY AREA SEE A3.2. NOTE: FOR FINISHING, SEE LANDSCAPE DRAWINGS

GENERAL NOTES

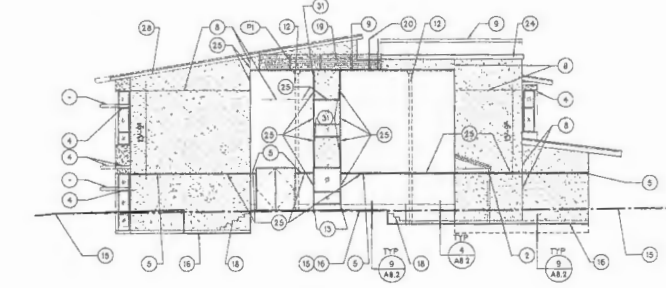
- SEE STRUCTURAL, MECHANICAL, PLUMBING, FIRE PROTECTION, ELECTRICAL, FIRE ALARM, CIVIL, LANDSCAPE, AND FOOD SERVICE DRAWINGS FOR RELATED SCOPE OF WORK.
- FOR ROOF SYSTEM INFORMATION AND MECHANICAL WELL INFORMATION INCLUDING DETAIL REFERENCES, SEE ALSO FLOOR AND ROOF PLANS.
- FOR SITE FEATURES INCLUDING RETAINING WALLS, STEPS, & GUARDRAILS, SEE ALSO SITE PLAN ON SHEETS A01 - A04.
- PAINT ALL GALV. HK DOORS AND GALV. DOOR FRAMES TO MATCH THAT OF ADJACENT WALL.
- EXTERIOR WOOD TRIM TO BE PAINTED COLOR OF ADJACENT WALL U.O.N., TYPICAL.
- DOWNSPOUTS, SHOWN DASHED FOR CLARITY. DOWNSPOUTS TO BE PAINTED TO MATCH COLOR OF ADJACENT WALL S.E.O.D. DOWNSPOUTS, U.O.N.
- STRUCTURE FOR COVERED WALKWAYS INCLUDING POSTS, BEAMS, AND UNDERSIDE OF STRUCTURAL DECK, TO BE PAINTED COLOR P.10, U.O.N. PAINT DOWNSPOUTS AT COVERED WALKWAY TO MATCH.
- FOR MORE INFORMATION ABOUT STOREFRONTS, DOORS, AND WINDOWS, SEE PLANS, DOOR SCHEDULE ON SHEET A3.8, AND TYPES ON SHEET A3.9.
- FOR TYPICAL STUCCO OR CEMENT PLASTER CORNER, SEE 24/A.B.5. FOR TYPICAL STUCCO OR CEMENT PLASTER AT TYPICAL 45° PENETRATION OF WALL, SEE DETAIL 11A.B.8. FOR TYPICAL CONDITION OF STUCCO OR CEMENT PLASTER AT CONCRETE CURB, SEE DETAIL 25 / A.B.8, U.O.N. SEE WALL TYPE GENERAL NOTES FOR FURRING AT LATH.
- AT INTERSECTIONS OF PARAPET WALL AND BUILDING, PROVIDE SADDLE FLASHING AS PER DETAIL 27A.B.3 BONDING WEATHER BARRIER, TYP. U.O.N.
- EXTERIOR WOOD TRIM TO BE PAINTED COLOR OF ADJACENT WALL U.O.N. AND FASCIAS TO BE PAINTED COLOR OF ROOF U.O.A. TYPICAL.

SHEET NOTES

- CEILING FINISH TO BE PLASTER OR GYPSUM BOARD DRAWING 7 ON SHEET A03
- PANDED GALVANIZED METAL CANOPY OR COVERED WALKWAY INCLUDING POSTS, BEAMS, AND STRUCTURAL DECK, TYP. FOR CANOPY SEE SHEET A2.2. FOR COVERED WALKWAY SEE DRAWING 7 ON SHEET A03
- FOR DETAIL AT INTERSECTION OF BUILDING WALL AND SITE WALL, SEE DETAIL 24/A.B.5
- 30" DEEP PREFABRICATED EXTERIOR SUN SHADE, TYP. AND STAINLESS STEEL ANGLE AT WALL, TYP. SEE DETAILS 9, 10 & 15 / A.B.8 S.E.O. SEE ALSO WALL SECTIONS FOR HEIGHT A.P.P. COORDINATE WITH WINDOWS
- 2" REVEAL JOINT, TYP. SEE DETAILS 29 AND 30 / A.B.8
- SEISMIC JOINT, TYP. SEE ALSO SHEETS A11, A13, & A2.2 FOR DETAIL REFERENCES.
- SEISMIC JOINT AT COVERED WALKWAY, TYP. SEE ROOF PLANS.
- CONTROL JOINT, TYP. SEE 25/A.B.5
- PANDED GSM PARAPET CAP, TYP. SEE DETAIL 11A.B.3
- FLASHING FOR METAL ROOF AT WALL, TYP. SEE ROOF PLANS.
- MECHANICAL EQUIPMENT, S.A.D. TYP.
- 4" SCHEDULE 40 GALV. STEEL PIPE DOWNSPOUT, TYP. SEE DETAILS 28 & 30 / A.B.8. SEE ALSO SHEET A3.1 AND S.C.D.
- SCORE JOINT IN CONCRETE, TYP.
- NOT USED
- GRADE LINE AT STREET, TYP.
- GRADE LINE, TYP. S.C.D. AND S.L.O. FOR EXTERIOR PAVING
- RETAINING WALL, FENCING, GUARDRAIL, & WALKWAY BEYOND SHOWN DASHED FOR CLARITY. S.L.O., S.S.D., AND S.C.D., TYP.
- STEPS, S.L.O. AND S.C.D., TYP.
- ROOF GUARDRAIL, TYP. SEE ROOF PLAN ON SHEET A2.3.
- PREFABRICATED METAL LADDER, SEE SHEET A2.3.
- SCHOOL LOGO AND SIGN CENTERED ON WALL. SEE DRAWING 6 ON SHEET A3.3
- ROOF DRAIN OVERFLOW PAINT TO MATCH ADJACENT WALL, TYP. SEE ROOF PLAN.
- CONCRETE CURB, TYP.
- PRE MANUFACTURED FOAM CORNICE, COVERED IN CEMENT PLASTER, PAINTED COLOR P.1, TYP. SEE DETAIL 20/A.B.8.
- ALIGN
- SIGN, TYP. SEE ALSO A2.4 AND A2.5
- CERAMIC TILE OVER CEMENT PLASTER, FOR ENLARGED ELEVATION AND DRINKING FOUNTAIN REQUIREMENTS, SEE 31A.3
- WOOD TRIM, TYP. PAINT TO MATCH ADJACENT WALL BELOW, TYP.

EXTERIOR PAINT COLOR LEGEND

CEMENT PLASTER PAINT COLOR = P1	CEMENT PLASTER PAINT COLOR = P2	CEMENT PLASTER PAINT COLOR = P3
(P1) = PAINT COLOR P1	(P2) = PAINT COLOR P2	(P3) = PAINT COLOR P3
PAINT COLOR P1 = KELLY MOORE COLOR KM4070-3 LONG VIEW GARDEN	PAINT COLOR P2 = KELLY MOORE COLOR KM4021-3 SWISS GREEN	PAINT COLOR P3 = KELLY MOORE COLOR KM4187-3 POWDERHORN MANOR



2 CARRINGTON STREET EXTERIOR ELEVATION
 SCALE: 1/8" = 1'-0" NOTE: FOR FINISHING, SEE LANDSCAPE DRAWINGS



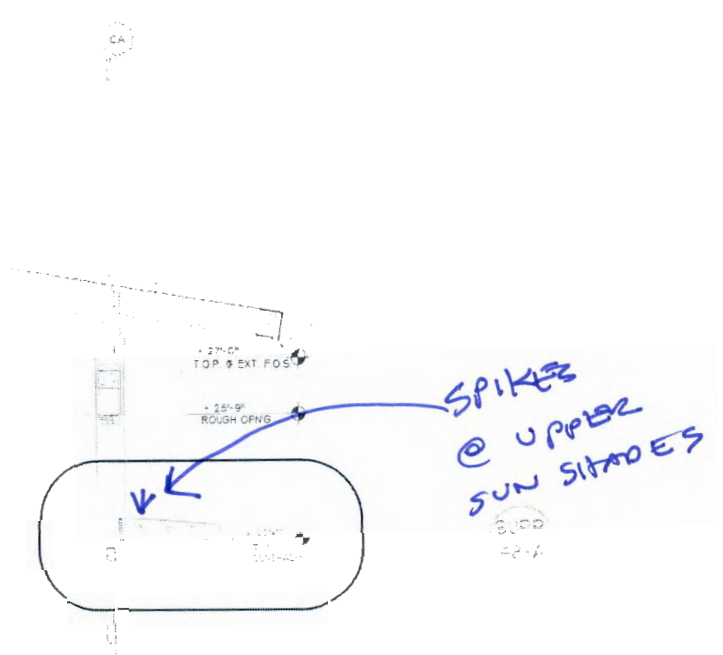
3 39TH AVENUE EXTERIOR ELEVATION
 SCALE: 1/8" = 1'-0" NOTE: ASSEMBLY SHOWN OBLIQUE. FOR STRAIGHT ON ELEVATIONS OF ASSEMBLY AREA SEE A3.2. NOTE: FOR FINISHING, SEE LANDSCAPE DRAWINGS

PORTABLE REPLACEMENT PROJECT
AT JEFFERSON ELEM. SCHOOL SITE
 OAKLAND, CALIFORNIA
 OAKLAND UNIFIED SCHOOL DISTRICT

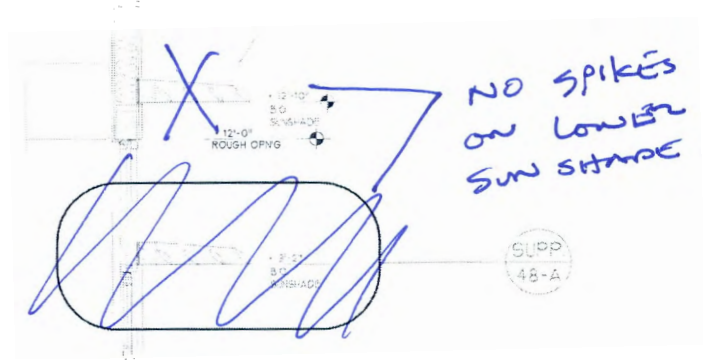
JOB NO. 70030
 DRAWN: JE
 CHECKED: TB
 JOB CAPTAIN: --

DATE	SCHEM. DES.	03/10/08
	SOB. DES. / P.C.D.	08/01/08
	SOB. DES. / C.D.A.	07/20/08
	SOB. CONSTRUCTION DOCUMENTS	10/29/08
	SOB. CONSTRUCTION DOCUMENTS	12/29/08
	DBA. SUBMITTAL	05/21/09
	DBA. CHECKBACK	03/15/09

DRAWING TITLE
EXTERIOR ELEVATIONS - STREET AND PLAYGROUND VIEWS



BIRD SPIKES NOT REQUIRED AT SUNSHADES MOUNTED ON WALLS.



INSTALL BIRD SPIKES AT SUNSHADES MOUNTED WITHIN FIELD OF VIEW OF THE WINDOW UNITS.

