



OAKLAND UNIFIED
SCHOOL DISTRICT

Community Schools, Thriving Students

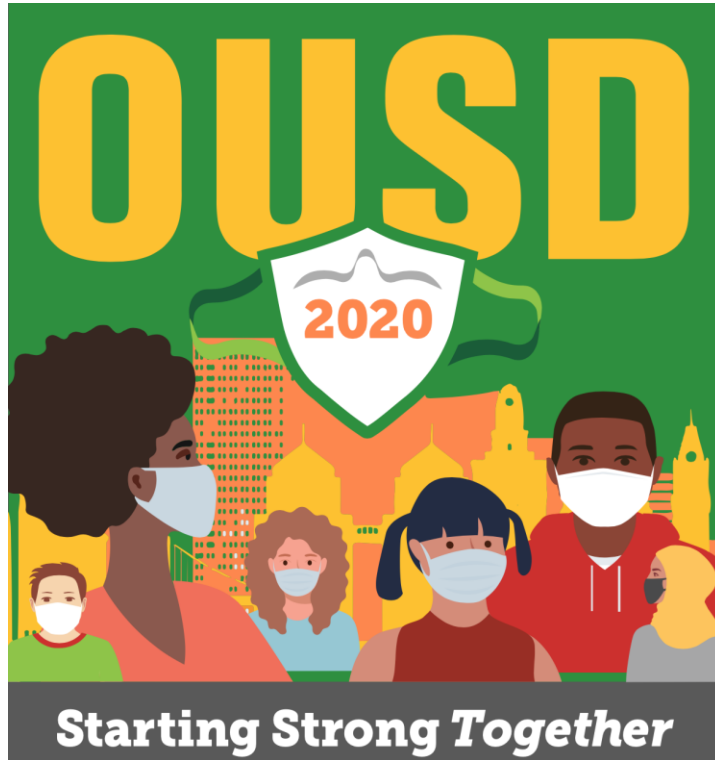
Superintendent Report



iam OUSD

December 9, 2020

Superintendent Report Overview



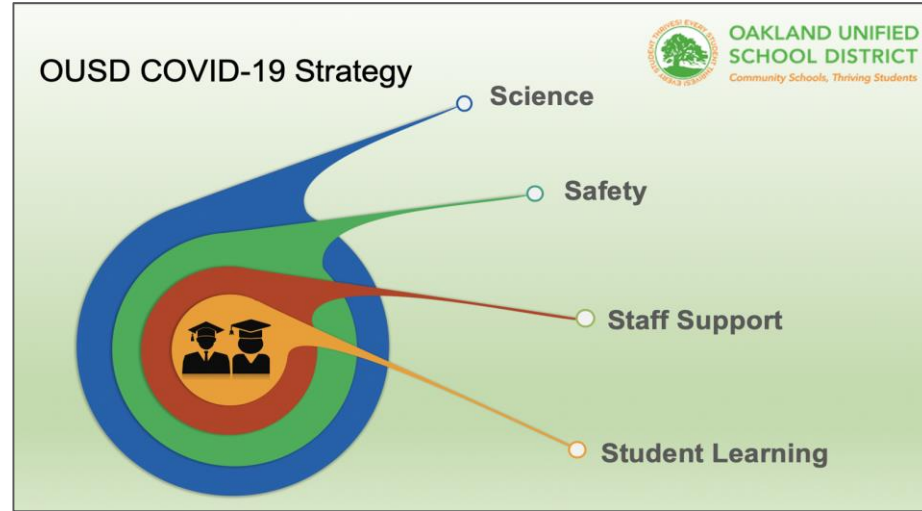
- ❖ Fall Family Survey
- ❖ Covid Dashboard
- ❖ Attendance Update
- ❖ Tech Equity Access Update
- ❖ Learning Hub Updates
- ❖ CARES Act Funding Update

Mission

Oakland Unified School District (OUSD) will build a Full-Service Community District focused on high academic achievement while serving the whole child, eliminating inequity, and providing each child with excellent teachers, every day.

Vision

All OUSD students will find joy in their academic experience while graduating with the skills to ensure they are caring, competent, fully-informed, critical thinkers who are prepared for college, career, and community success.



Fall Family Survey

Extended until Dec. 15. - www.ousd.org/shareyourvoice

- **Responses:** almost 6,000 families representing over 7,900 students
- **Topics:** Distance learning feedback, in-person learning, other preferences.
- **Preliminary Findings:**
 - **Returning to in-person instruction:** Across all groups, there are deeply divided opinions about whether families are ready to return to in-person instruction with many families falling into one of three categories: 1) wanting to return, 2) not wanting to return, and 3) not sure about returning.
 - **Importance of social connections to teachers and peers:** The largest areas of concern for families - across all grade levels - was about their students building connections with teachers and other students.
 - **Satisfaction with academics:** Overall, we see many families “satisfied” with our online instruction, but many different subgroups are expressing very different levels of satisfaction.
 - **Differences between schools:** Similar school sites are expressing very different experiences with distance learning.

OUSD Readiness Dashboard

- Tracks key indicators of readiness in five areas
- Increased transparency
- Updated weekly

www.ousd.org/readinessdashboard

Example: Cleaning Protocols



CLEANING PROTOCOLS

Deep cleaning of all classrooms | 100% COMPLETE

Restroom soap dispensers filled & repaired | 100% COMPLETE

Cleaning protocols & procedures created | 100% COMPLETE

Cleaning procedures training provided to custodial staff | 100% COMPLETE

Custodial cleaning schedules set & posted on campuses | 2%

Site custodial staffing hired to support distance learning | 96%



SAFETY (PPE)



CUSTODIAL



STAFF



FACILITIES



ENGAGEMENT /
COMMUNICATION

Attendance Update (Aug 10-Dec 1)

Grade level	All Students	ELL	New-comer	SPED	Unhoused	Foster Youth	African American	Latino	Asian	White
TK-5 (current enrollment)	95% (18515)	95% (5862)	93% (1470)	93% (2467)	83% (191)	92% (47)	91% (3679)	95% (7796)	98% (2371)	99% (2478)
6-8 (current enrollment)	95% (6964)	94% (1884)	93% (415)	92% (1238)	86% (91)	90% (40)	92% (1577)	95% (3327)	97% (697)	99% (695)
9-12 (current enrollment)	88% (9531)	81% (2585)	78% (1027)	84% (1523)	73% (461)	76% (95)	85% (2476)	85% (4331)	95% (1213)	96% (791)

* MetWest and Sojourner Truth NOT included.

Technology Equity and Access Update

Launch of Tech Equity and Access Team

OUSD has launched a Tech Equity and Access Team composed of Cross Departmental Team members to strategically outreach and connect with with our most vulnerable youth to ensure that they have access to quality distance learning.

- **95.8% (34,468) of students have validated access to a quality device** and Internet access to distance learning.
- Remaining **4.2% of students are getting intensive outreach and intervention** to improve the quality of their access.



TCN Admin team ready to celebrate their teachers and hand out the new devices.

Ensuring Teacher Access!!!!

Our teachers are getting an upgrade of technology and a remote teaching setup! OUSD has been distributing new Surface Pro Laptops, 2nd monitors, mouse and OUSD mouse pad to all classroom teachers, TSA, & counselors.

The **Tech Equity and Access Team** include key members from:

- Office of Equity
- Elementary Networks
- Middle School Network
- High School Network
- ELLMA Office (Newcomers & Refuge)
- Community Schools (Foster and Homeless Youth)
- Special Education
- Tech Services
- RAD
- Oakland Undivided
- Early Childhood Education
- Alternative Education

Learning Hubs

Learning
Hubs:
Community-based

City of Oakland/OUSD/CBO partnerships providing in-person academic and enrichment support program at 3 City Park and Rec sites and 6 CBO sites; 2 additional CBO sites in planning.

Learning
Hubs: School-
based

Students with Unstable Housing - Dewey (up to 4 students)
Students struggling with Distance Learning - CCPA, up to 12 students
Students struggling with DL and experiencing skill regression in relation to IEP goals:
MPA Upper, up to 14 students, target launch 12/7
5-10 Additional sites forthcoming in January

Virtual
Tutoring

Partnership with Oakland Ed Fund. Volunteers matched with teachers (classroom Zoom Assistants) and with individual students (tutoring). 60 volunteers matched with nearly 240 more in process.

Special Education Services and Testing

Support Pods

We are providing in-person services beyond the virtual instructional day to a group of students identified by their teachers as being impacted by significant skill regression. Pods will launch in November at multiple OUSD campuses, each with 2-3 pods on site. These pods are being supported by Non Public Agency Staff and paraeducators from AFSCME.

In-Home Service

We have partnered with two nonpublic agencies to provide in-home behavioral technician support and in-home tutoring for our students who have experienced the most significant skill regression. Additionally, we launched a cadre of engagement liaisons to support the reengagement of a small group of students with IEPs who are not attending online courses.

Assessment

We have several assessment teams working on unfinished evaluations from the Spring of 2020, and we are expanding our capacity through the expansion of contracted assessors and OUSD volunteers.

CARES (as submitted Nov 18, 2020)

Total CRF Allocation	\$33,220,006
Total of Previous CRF Expended (Mar 1 - Sept 30, 2020)	\$440,808
Total of Current CRF Obligation (Oct 1-31)	\$8,549,890
Total of Current CRF Expended (Oct 1-31)	\$4,667,795
Future CRF Expenditures (Nov 1 - Dec 30)	\$19,561,513
Projected Unexpended CRF	\$0



EVERY STUDENT THRIVES!



**OAKLAND UNIFIED
SCHOOL DISTRICT**
Community Schools, Thriving Students

1000 Broadway, Suite 680, Oakland, CA 94607

www.ousd.org



@OUSDnews