



# Tilden Relocation Update

*February 2009*



# Agenda

---

- Situation Overview
- Significant Facilities Issues
- Engagement/Outreach
- Relocation Factors
- Tilden Relocation plan
- Financial Implications
- Next Steps
- Appendix



# Situation Overview

---

## Tilden Enrollment\*

PreK SDC students	K-3 SDC students	K-3 Gen. Ed. students	Total
93**	80	45	125

- Tilden includes 16 PreK-3<sup>rd</sup> grade SDC programs
- The K-3 SDC to General Education student ratio is 64% to 36%
- The PreK-3 SDC to General Education student ratio is 79% to 21%
- 2007-2008: Tilden went through a redesign process, primarily to rebalance the SDC and General Education populations and enhance the educational program
- Spring 2008: At the end of the redesign phase, major facilities issues were identified at the Tilden (John Swett) site that resulted in significant repair and relocation needs

\*Based on 08-09 California Department of Education CBEDS data

\*\*Based on SPED department data



## Situation Overview (con't)

---

- Spring 2008: Cabinet decision to vacate Lower Tilden due to multiple significant facilities issues
- Spring 2008: Agreement to review long-term solution in Fall 2008
- Some facilities issues will remain irresolvable (terrain, high moisture)
- December 2008: Board approval for staff to engage with Tilden community and review relocation options for 09-10
- Today: Board decision on Tilden Relocation Plan



# Significant Facilities Issues

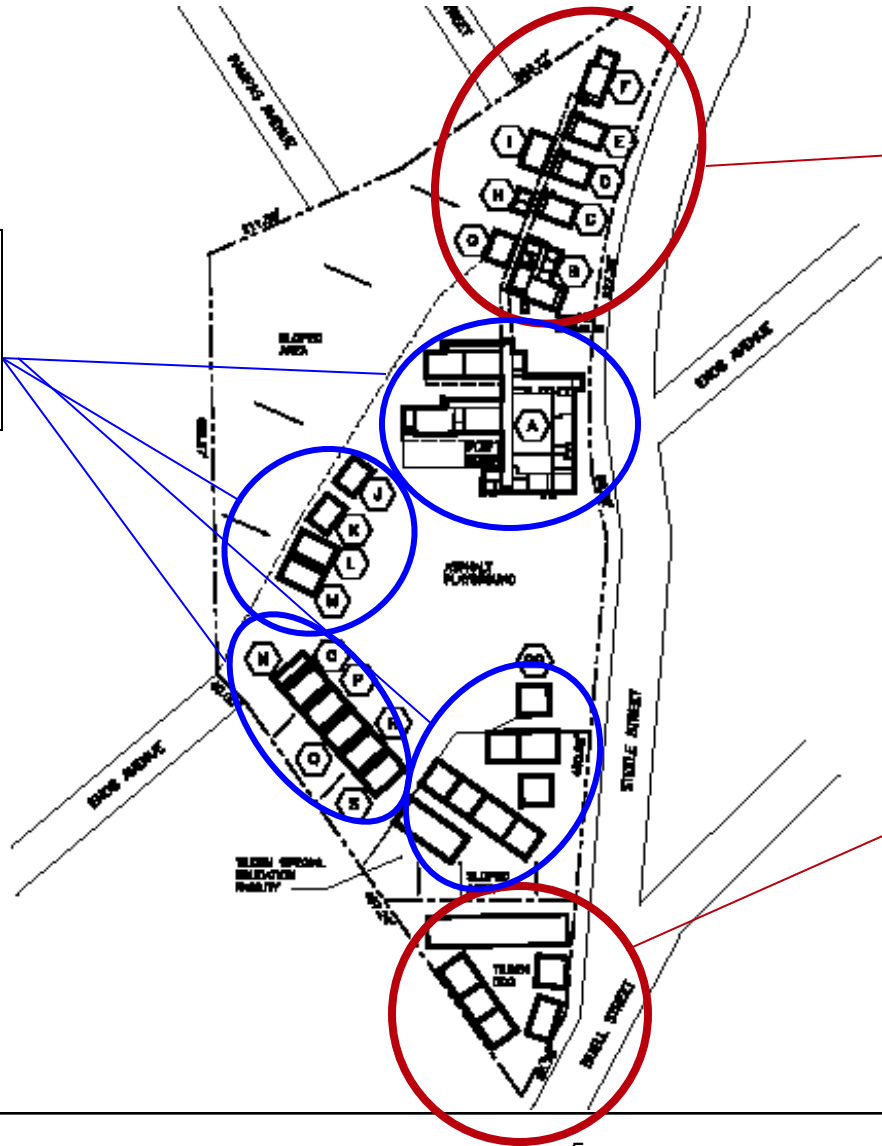
---

Facilities Issues	Possible Solutions
Difficult terrain and very challenging accessibility issues for special needs students	Given terrain, not be able to make site accessible
Need to repair fire alarm and PA systems	Completed Fall 2008
Forest location conducive to continuous high moisture and potential for mold and faster deterioration of buildings	Irresolvable due to location and external environment.
Lack of barrier or fencing to off-site premises	Cost prohibitive because of uneven difficult terrain
Renovate Upper Tilden due to above issues	Would include new floors, painting, fencing, restroom restoration, heater installation, fire & alarm system. Cost prohibitive - estimated costs of \$1M



# Significant Facilities Issues: Current Use of Tilden

**MIDDLE TILDEN**  
Currently occupied  
by students and  
staff



**UPPER TILDEN**  
Vacated prior to  
redesign process  
as a result of  
facilities issues

**LOWER TILDEN**  
Vacated in  
Spring 2008 as  
a result of  
facilities issues



# Engagement/Outreach

---

- **March – May 2008:** 5 meetings regarding Tilden facilities issues
  - **3/12, 4/8, 4/23:** included principal, Facilities, SPED, School Portfolio Management, NExO, Cabinet members
  - **5/20, 5/30:** included principal, Facilities, SPED, School Portfolio Management, NExO, Cabinet members, parents, teachers
- **October 2008 – February 2009:** 4 Tilden Subcommittee meetings
  - **10/13, 11/10, 1/8, 2/5:** Included teachers, parents, principals, Facilities, SPED, School Portfolio Management, NExOs, Cabinet members
- **June 2008 – February 2009:** Community/Parent Communications
  - **June 2008 and December 2008:** Parent letters sent home, Parent newsletter (Dec.)
  - **1/13:** Parent/community meeting at Tilden
  - Ongoing close collaboration with Subcommittee parent leaders
- **February 2009:** Tilden Teacher/SPED meeting in February
- **January – February 2009:** Campus Walkthroughs
  - Facilities walkthroughs at Tilden and four relocation sites
  - Programmatic walkthroughs at Tilden by relocation site principals
  - Programmatic walkthroughs by Tilden parent leaders at four relocation sites (still being completed)



# Relocation Factors

---

<b>Factor</b>	<b>Description</b>
<b>Needs of students: Continuum of service at each location</b>	Best grouping of programs that would offer a continuation of services for students (i.e. K-5 program instead of K-2 only); IEPs to determine level of services required for students at relocation sites
<b>SPED/General Education balancing</b>	Ratio of Special Education students vs. General Education students at relocation site
<b>Site Capacity</b>	Space available at relocation site





# Tilden Relocation Proposal Considerations

---

- Relocation consists of placement of 16 Tilden SDC programs and assignments for 61 general education students
- No one location could house all programs based on facility constraints
  - Tried to place in clusters at as few sites as possible
- Created a continuum of services for students in relocation plan that is currently not planned or available at Tilden site
- Tried to hold parent and teacher vision as much as possible
- Need to rebalance current ratio of SDC and General Education student population



# Tilden Relocation proposal

	Bella Vista	Brookfield	Burckhalter	Howard
<b>Current programs</b>	1-3 SH SDC 1/2 LE SDC 2/3 LE SDC	K-5 Learning Center Model K-2 Autism SDC 1st-3rd SH SDC 4/5 SH SDC	PreK Autism SDC PreK LE K-2 Autism SDC 3-5 Autism SDC	PreK SH SDC K-2 Autism SDC 3-5 Autism SDC 4/5 NSH SDC
<b>Proposed Additions from Tilden</b>	PreK LE SDC K LE SDC	PreK Autism SDC K-2 Autism SDC 3-5 Autism SDC PreK SH SDC K SH SDC	PreK SH SDC PreK Autism SDC PreK LE K LE K-2 Autism SDC	PreK Autism SDC PreK Autism SDC PreK LE K-2 Autism SDC Integrated K (6 students-No room need) <i>*Integrate current PreK SH with CDC in morning and use vacant CDC classroom in afternoon</i>
<b>Total programs with additions</b>	PreK LE SDC K LE SDC 1/2 LE SDC 2/3 LE SDC 1-3 SH SDC	K-5 Learning Center Model PreK Autism SDC K-2 Autism SDC (2 classes) 3-5 Autism SDC PreK SH SDC K SH SDC 1-3 SH SDC 4/5 SH SDC	PreK Autism SDC (2 classes) K-2 Autism SDC (2 classes) 3-5 Autism SDC PreK LE (2 classes) K LE PreK SH SDC	PreK Autism SDC (2 classes) K-2 Autism SDC (2 classes) 3-5 Autism SDC PreK LE Integrated K PreK SH SDC (integrated with CDC in morning) 4/5 NSH SDC
<b>Rationale</b>	Create continuum of PreK -3 Language Enrichment program (currently 1-3)	Create continuum of PreK-5 Autism program (currently K-2); Create continuum of PreK - 5 SH program (currently 1-5)	Build on existing PreK - 5 Autism program; Create continuum of PreK - K LE program (currently PreK)	Create continuum of PreK - 5 Autism program (currently K-5) and enable collaboration/PLCs between same grade level Autism teachers and lower/higher grade level collaboration as well; PreK LE and Integrated K are both high-functioning classes with most going onto general education - this will help to boost enrollment
<b>Facilities Need</b>	2 classrooms	4 classrooms	5 classrooms (will need to add 4 portables)	3 classrooms
<b>% SDC students</b>	9%	13%	19%	15%

SH = Severely Handicapped  
LE = Language Enrichment

Notes: The infant DHH (Deaf Hard of Hearing) class will be moved to Franklin for an infant - 5th grade continuum; Students in integrated 1-3 classes at Tilden will be placed in appropriate programs based on IEP needs



## Financial Implications

---

School	Work Needed	Estimated Cost
Bella Vista	Moves for two programs, installation of outside phone lines	\$10,000
Brookfield	Moves for five programs; extended blue painted curb, convert part of yard to staff parking; Full modernization may address additional facilities needs based on parent feedback	\$25,000
Burckhalter	Moves for 5 programs; installation of 4 portables and a bathroom portable; signage for separate pick up/bussing area; fencing to separate PreK playground space	\$700,000 (would require 6-8 month timeline)
Howard	Moves for 4 programs + integrated classroom	\$15,000

Total estimated costs = \$750,000

---



# Recommendation

---

- Approval by Board of Tilden Relocation Plan
  - Communication to parents regarding outcome
  - Assignment of teachers
  - Facilities timeline and process for moves



# Appendix

---



# Enrollment Information

## Tilden Elementary Enrollment\*

	K	1st	2nd	3rd	Total
SDC	46	17	12	5	80
Non-SDC	18	12	7	8	45
<b>Total</b>	<b>64</b>	<b>29</b>	<b>19</b>	<b>13</b>	<b>125</b>

## 08-09 ENROLLMENT

	08-09 CBEDS Enrollment			Fac Cap	Fac. Avail	% SDC
	Non-SDC	SDC	Total			
<b>Bella Vista</b>	462	31	493	596	103	6%
<b>Brookfield</b>	377	28	405	577	172	7%
<b>Burckhalter</b>	151	11	162	235	73	7%
<b>Howard</b>	207	25	232	426	194	11%

## 09-10 WITH PROPOSED ADDITIONS

	09-10 Projections		Tilden SDC additions	Total	Fac Cap	Fac. Avail	% SDC
	Non-SDC	SDC					
<b>Bella Vista</b>	472	31	15	518	596	78	9%
<b>Brookfield</b>	379	28	28	435	577	142	13%
<b>Burckhalter</b>	147	11	23	181	235	54	19%
<b>Howard</b>	189	25	8	222	426	204	15%

\*Based on 08-09 California Department of Education CBEDS data



# Facilities Walkthrough Checklist

---

- PreK – 5<sup>th</sup> grade accessible playgrounds
- Handicapped accessible
- Handicapped parking
- Bus accessibility
- Office/space for SPED services (i.e. speech therapy, occupational therapy, nurse and other Special Education services)
- Bathroom inside or in close proximity to rooms
- Connected to the main building's fire alarm and PA system
- Outside phone lines
- Heat

