



OAKLAND UNIFIED  
SCHOOL DISTRICT

*Community Schools, Thriving Students*

# GLENVIEW INTERIM SITE

---

March 11, 2015

Mia Settles-Tidwell, Chief Operations Officer

VERSION 4

2.24.15

# Board Policies Guiding our Work

**A**

Asset Management Policy 7350 (2012)

*Section on Priority Order for Property Use*

***“Provide for temporary relocation of schools for major construction and modernization projects.”***

**B**

Community Engagement Policy 7155 (2014)

***“For each major facilities project, the Superintendent shall ensure a community engagement process.”***

# Background

- Glenview Elementary will undergo a major 2-year construction project of its facilities 2016-2018 due to Seismic issues with the current building.
- Glenview students will need a “temporary” or “interim” site location during the major construction project.
- Two temporary or interim locations were considered in the community engagement process:

**LAKEVIEW & SANTA FE SITES**



# Background Continued...

- Community Engagement Process was led by Community Engagement Specialist- Heather Imboden
- An initial survey of the Glenview community priorities was administered in December 2014– Proximity was identified as a primary value
- Different community perspectives about Santa Fe vs. Lakeview emerged



# Background Continued...

- Superintendent directed staff to design & engage in a more extensive community engagement process – December 2014 and January 2015:

***A: Community Values Survey of staff and K-3 families with approx. 145 respondents (approx. 50% participation rate)***

***B: Two community forums to discuss and prioritize the value survey results with 60 participants***

***C: A site visit to both Lakeview and Santa Fe sites with approx. 75 Glenview Community members***

***D: Cost Analysis of both site improvement needs***

# Glenview Engagement Findings

A written report of the Glenview Community's preference for the **Santa Fe** Site based on the Community Engagement process findings was provided to the Superintendent January 2015 to inform his recommendation to the Board of Education.



# Santa Fe Community

- Santa Fe Community Action Network (Santa Fe CAN) Education Committee has a representative serving on the Glenview Interim Site Committee
- Superintendent has met with Santa Fe CAN members to discuss their interest in re-opening the Santa Fe School Site to serve that area of the community
- The Superintendent indicated an openness to receive proposals through a Call for Quality Schools process for an autonomous program at Santa Fe as early as the Fall of 2017

# Superintendent's Recommendation

During the 2016-2017 and 2017-2018 Open Enrollment Period, our Open Enrollment prioritization will be enacted for Glenview School located at Santa Fe in this order: Glenview Siblings (1<sup>st</sup>) priority, Glenview Neighborhood (2nd), Santa Fe Neighborhood (3rd), and General Lottery. No boundary changes are required, but identifying Santa Fe Neighborhood students as a priority in the Open Enrollment Process is established in this action.





## **Guiding Questions...**

- (1) How will this action impact other surrounding schools in the area?
  
- (2) How would this action be implemented?
  - (1) What are the pros/cons of this action?

# Glenview School Choice Data

What were the first choices for kindergarten of families living in the Glenview attendance area **in 2014**?

What were the first choices for kindergarten of families living in the Glenview attendance area **in 2013**?

First Choice School	Number	Percent
Glenview Elementary	31	44.29
Melrose Leadership Academy	6	8.57
Sequoia Elementary	5	7.14
Chabot Elementary	3	4.29
Cleveland Elementary	3	4.29
Joaquin Miller Elementary	3	4.29
La Escuelita Elementary	3	4.29
Manzanita SEED	3	4.29
Montclair Elementary	3	4.29
Bella Vista Elementary	2	2.86
Crocker Highlands Elementary	2	2.86
Garfield Elementary	2	2.86
Allendale Elementary	1	1.43
Kaiser Elementary	1	1.43
Peralta Elementary	1	1.43
Thornhill Elementary	1	1.43
Total	70	100

First Choice School	Number	Percent
Glenview Elementary	54	52.43
Sequoia Elementary	11	10.68
Crocker Highlands Elementary	6	5.83
Montclair Elementary	5	4.85
Joaquin Miller Elementary	4	3.88
Franklin Elementary	3	2.91
Manzanita SEED	3	2.91
Thornhill Elementary	3	2.91
Chabot Elementary	2	1.94
Garfield Elementary	2	1.94
Hillcrest Elementary	2	1.94
Global Family	1	0.97
Greenleaf Elementary	1	0.97
Howard Elementary	1	0.97
Kaiser Elementary	1	0.97
Lincoln Elementary	1	0.97
Manzanita Community	1	0.97
Peralta Elementary	1	0.97
Redwood Heights Elementary	1	0.97
Total	103	100

# School Choice

What were the first choices for kindergarten of families enrolled in Glenview in 2014?

First Choice School	Number	Percent
Glenview Elementary	55	76.39
Crocker Highlands Elementary	5	6.94
Chabot Elementary	3	4.17
Redwood Heights Elementary	3	4.17
Joaquin Miller Elementary	2	2.78
Cleveland Elementary	1	1.39
Hillcrest Elementary	1	1.39
Montclair Elementary	1	1.39
Sequoia Elementary	1	1.39
Total	72	100

Of the 55 families who chose Glenview as their first choice, 30 of them live in the Glenview attendance area

What were the first choices for kindergarten of families enrolled in Glenview in 2013?

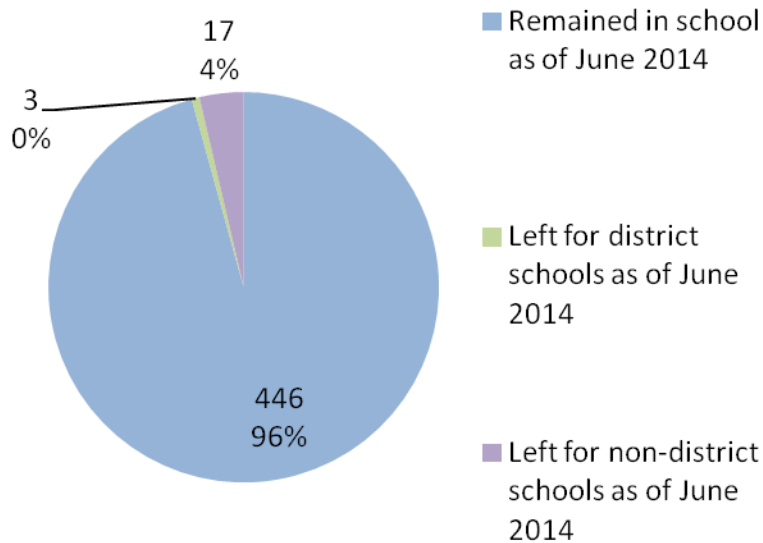
First Choice School	Number	Percent
Glenview Elementary	63	84
Lincoln Elementary	2	2.67
Redwood Heights Elementary	2	2.67
Sequoia Elementary	2	2.67
Cleveland Elementary	1	1.33
Crocker Highlands Elementary	1	1.33
Franklin Elementary	1	1.33
Hillcrest Elementary	1	1.33
Peralta Elementary	1	1.33
Thornhill Elementary	1	1.33
Total	75	100

Of the 63 families who chose Glenview as their first choice, 39 of them live in the Glenview attendance area

# Glenview Student Mobility

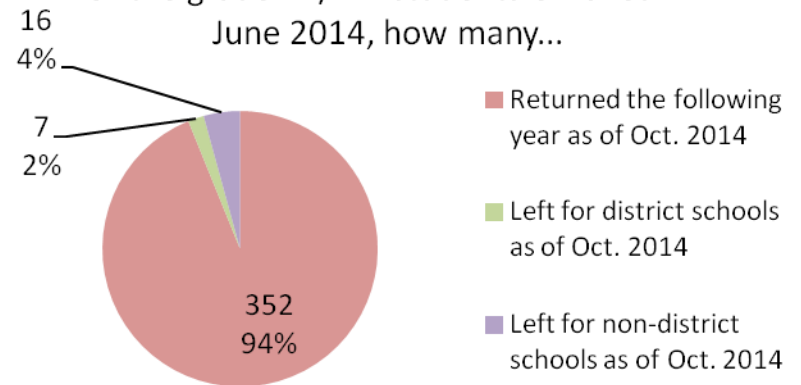
## Student Mobility from the Beginning of the School Year to the End of the School Year

Of all the students enrolled in Oct. 2013, how many...

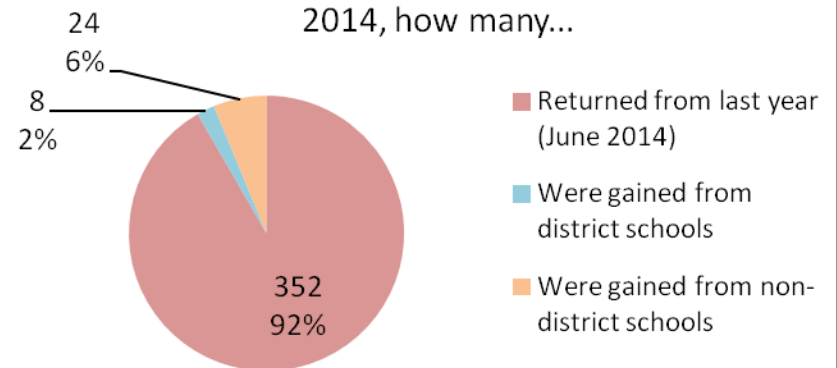


## Student Mobility from the End of the School Year to the Beginning of the Next School Year

Of the grade 1k/k-4 students enrolled in June 2014, how many...

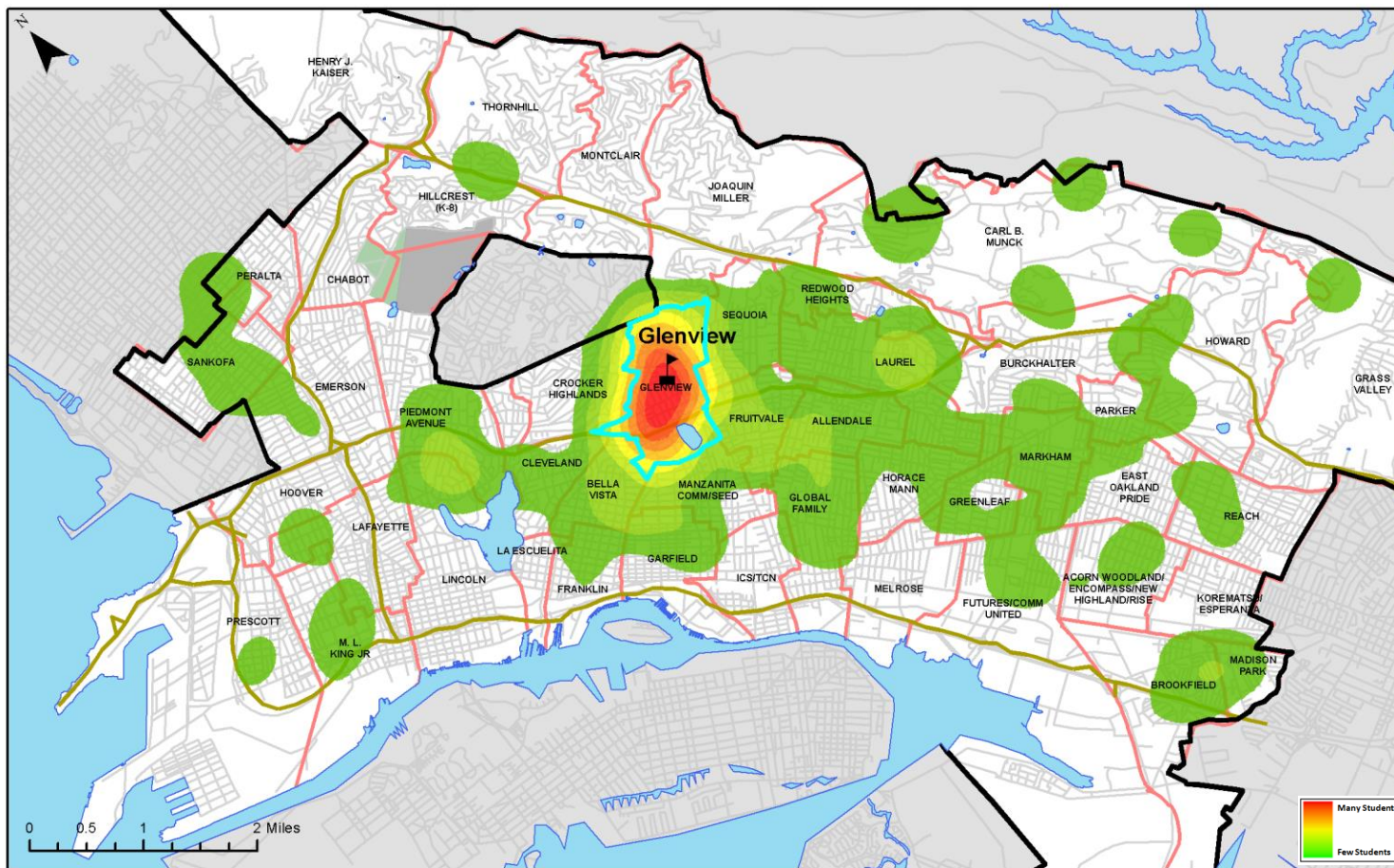


Of the grade 1-5 students enrolled in Oct. 2014, how many...





# Glenview Elementary K-5 Live/Go 2014-15: Where Glenview K-5 students live

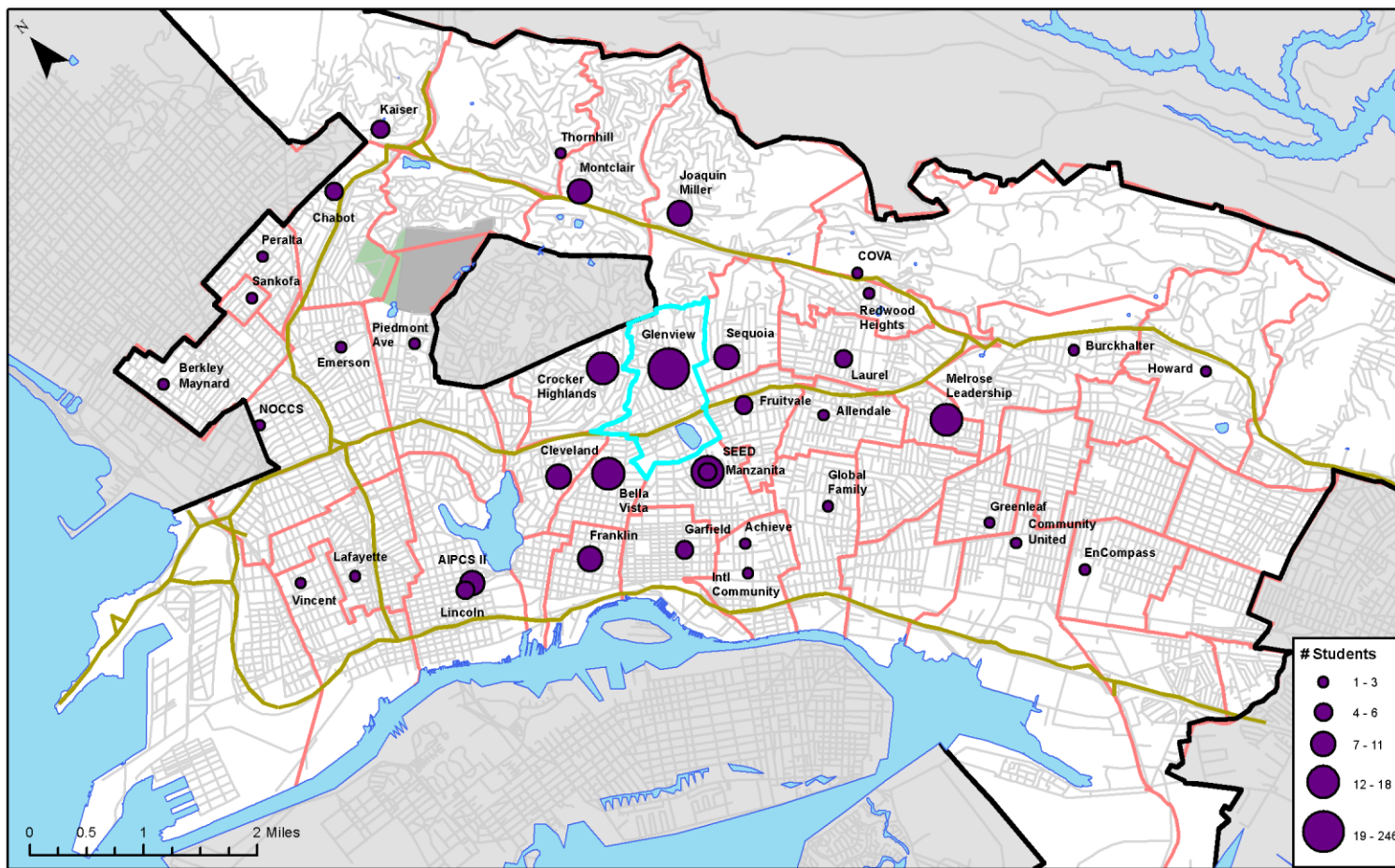


Living in Attendance Area	# students	% students
GLENVIEW	246	53.5%
LAUREL	23	5.0%
FRUITVALE	16	3.5%
CARL B. MUNCK	12	2.6%
SEQUOIA	11	2.4%
ALLENDALE	10	2.2%
ASCEND/GLOBAL FAMILY	10	2.2%
MANZANITA	10	2.2%
BELLA VISTA	10	2.2%
PIEDMONT AVENUE	9	2.0%
GARFIELD	7	1.5%
CROCKER HIGHLANDS	6	1.3%
SANKOFA	6	1.3%
BROOKFIELD	6	1.3%
HOWARD	6	1.3%
LAFAYETTE	5	1.1%
LINCOLN	5	1.1%
PERALTA	4	0.9%
MARKHAM	4	0.9%
COMMUNITY UNITED/FUTURES	4	0.9%
OUTSIDE OUSD	4	0.9%
CLEVELAND	4	0.9%
FRANKLIN	4	0.9%
E OAKLAND PRIDE	3	0.7%
BURCKHALTER	3	0.7%
MADISON PARK LOWER	3	0.7%
GRASS VALLEY	3	0.7%
GREENLEAF	3	0.7%
HIGHLAND	3	0.7%
REACH	3	0.7%
M. L. KING JR	3	0.7%
HORACE MANN	2	0.4%
THORNHILL	2	0.4%
MONTCLAIR	2	0.4%
EMERSON	2	0.4%
PLACE	2	0.4%
REDWOOD HEIGHTS	2	0.4%
HILLCREST	1	0.2%
PARKER	1	0.2%
TOTAL	460	100.0%



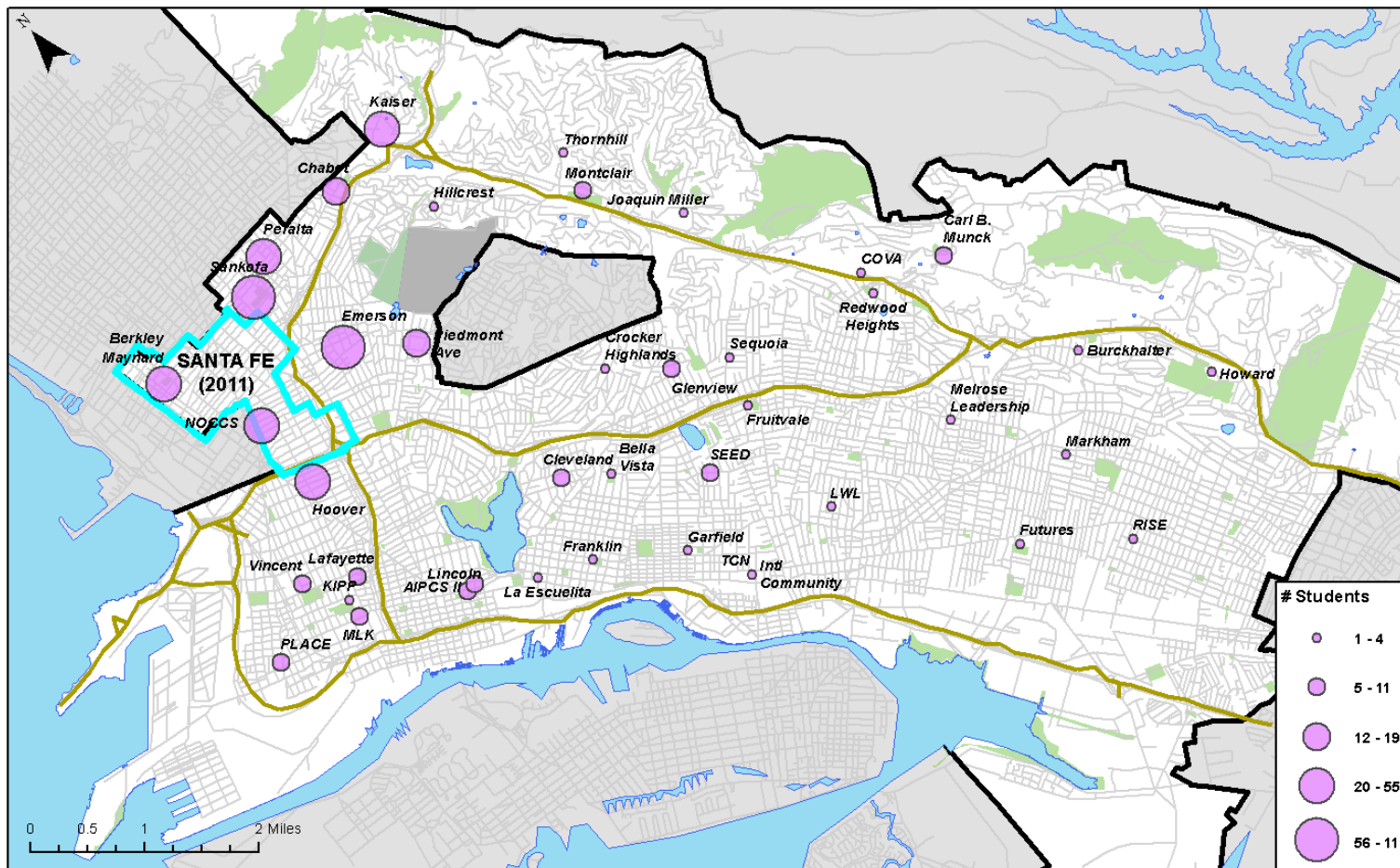


# Glenview Elementary K-5 Live/Go 2014-15: Where K-5 students living in Glenview attendance area go



School	# Students	% Students
Glenview	246	58.6%
Bella Vista	18	4.3%
Crocker Highlands	14	3.3%
SEED	13	3.1%
Melrose Leadership	13	3.1%
Montclair	11	2.6%
Franklin	10	2.4%
Joaquin Miller	8	1.9%
Sequoia	8	1.9%
Cleveland	7	1.7%
AIPCS II	7	1.7%
Manzanita	6	1.4%
Chabot	5	1.2%
Fruitvale	5	1.2%
Lincoln	5	1.2%
Kaiser	5	1.2%
Garfield	4	1.0%
Laurel	4	1.0%
Allendale	3	0.7%
Redwood Heights	3	0.7%
Global Family	2	0.5%
Lafayette	2	0.5%
Peralta	2	0.5%
Piedmont Ave	2	0.5%
Thornhill	2	0.5%
Intl Community	2	0.5%
Sankofa	2	0.5%
Burckhalter	1	0.2%
Greenleaf	1	0.2%
Emerson	1	0.2%
Community United	1	0.2%
Howard	1	0.2%
EnCompass	1	0.2%
Berkley Maynard	1	0.2%
Vincent	1	0.2%
COVA	1	0.2%
NOCCS	1	0.2%
Achieve	1	0.2%
TOTAL	420	100.0%

# Schools attended by 2014-15 OUSD K-5 students living in Sante Fe attendance area



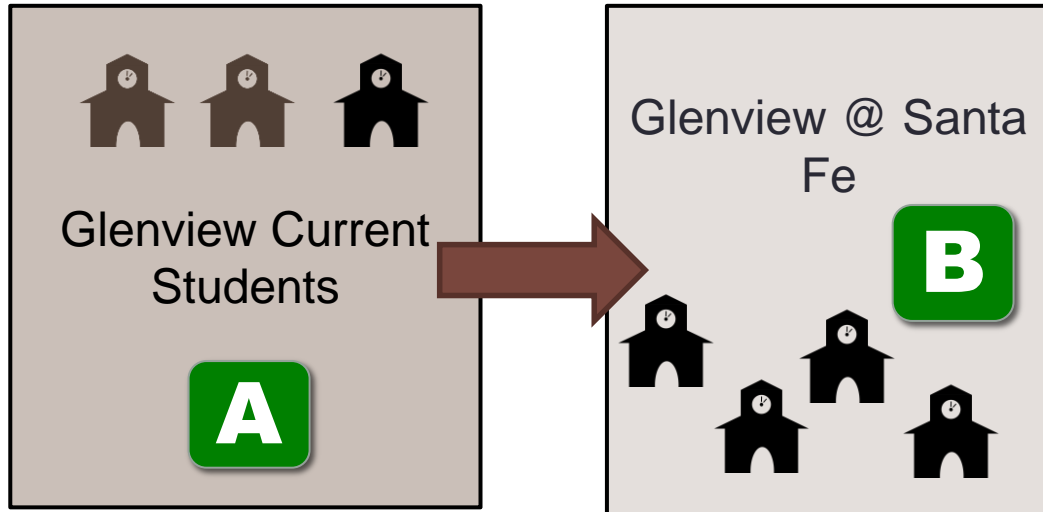
SITE_ID	SCHOOL	#STUDENTS
191	Sankofa	115
115	Emerson	75
505	Berkley Maynard	55
145	Peralta	47
170	Hoover	38
567	NOCCS	38
171	Kaiser	33
146	Piedmont Ave	19
106	Chabot	18
133	Lincoln	11
182	MLK	9
108	Cleveland	8
119	Glenview	8
129	Lafayette	8
175	SEED	7
530	Vincent	7
143	Montclair	6
168	Carl B. Munck	5
183	PLACE	5
534	AIPCS II	5
102	Bella Vista	4
121	La Escuelita	4
151	Sequoia	4
537	KIPP	4
105	Burckhalter	3
117	Fruitvale	3
127	Hillcrest	3
166	Howard	3
535	COVA	3
113	LWL	2
116	Franklin	2
118	Garfield	2
142	Joaquin Miller	2
157	Thornhill	2
235	Melrose Leadership	2
111	Crocker Highlands	1
123	Futures	1
138	Markham	1
148	Redwood Heights	1
186	Intl Community	1
190	TCN	1
192	RISE	1
TOTAL		567

SLRadke/RAD  
2.5.2015

Top 4 District-Managed Sites Impacted by Action:


- (1) Sankofa
- (2) Emerson
- (3) Peralta
- (4) Hoover

# OPEN ENROLLMENT PRIORITIZATION



**A** Glenview Projected number of students for 15-16 & 16-17 @ 454 students K-5

**B** Available space for students interested in attending Glenview @ Santa Fe is dependent upon the # of current Glenview students, Glenview siblings, and Glenview neighborhood

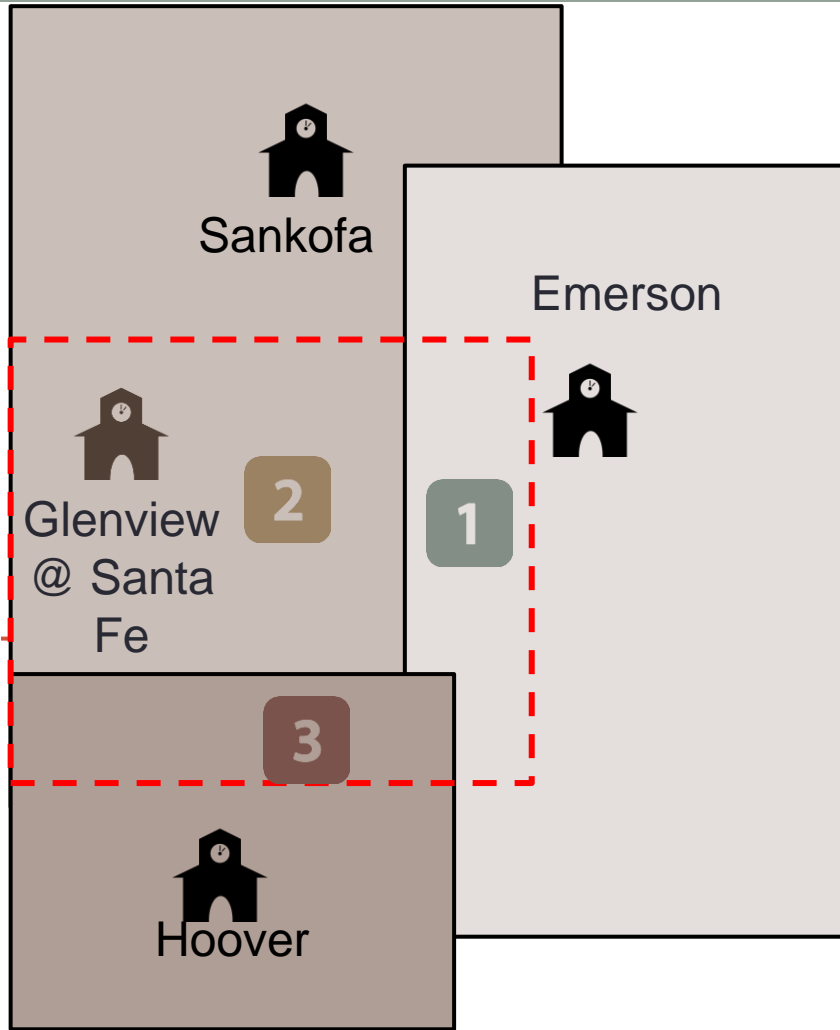
- 1 Glenview Siblings
- 2 Glenview Neighborhood
- 3 Santa Fe Applicant 
- 4 General Lottery

## Open Enrollment Prioritization Process to fill remaining open projected spaces

- (1) Glenview Siblings
- (2) Glenview Neighborhood
- (3) Santa Fe Applicant
- (4) General Lottery



# EXAMPLE: GLENVIEW @ SANTA FE OPEN ENROLLMENT PROCESS



 = Former **Santa Fe Attendance Area**

 = **Current Attendance Area**

**1** If #1 choice is current attendance area school (*Emerson in this example*); application will receive attendance area priority for current school (*Emerson*) in assignment process.

**2** If #1 choice is Glenview @ Santa Fe; application will receive 3<sup>rd</sup> priority in assignment process after current Glenview student siblings & Glenview Neighborhood

**3** If **ALL** choices outside current attendance area, but choice is unavailable; current attendance area school will be default assignment (*Hoover in this example*).

# Implications

## Pros

1. Maintaining the enrollment in OUSD
2. Keeping the Glenview Community together and intact
3. Recommendation informed by Glenview & Santa Fe Communities
4. Offer another quality option for students in the Santa Fe area

## Cons

1. Enrollment impacts to Sankofa & Slight impacts to Emerson & Hoover
2. Monitoring the enrollment of Glenview@ Santa Fe to avoid overcrowding once school site returns to Glenview new site



# Every Student Thrives!



**OAKLAND UNIFIED  
SCHOOL DISTRICT**

*Community Schools, Thriving Students*