



Superintendent's Report

January 14, 2015

Superintendent's Report

- TECHNOLOGY PLAN UPDATE
- DISTRICT WIDE EFFORTS & SCHOOL SITE UPDATES

• TECHNOLOGY PLAN UPDATE

John Krull, Technology Officer

Mia Settles-Tidwell, Chief Operations Officer

Technology Plan Update

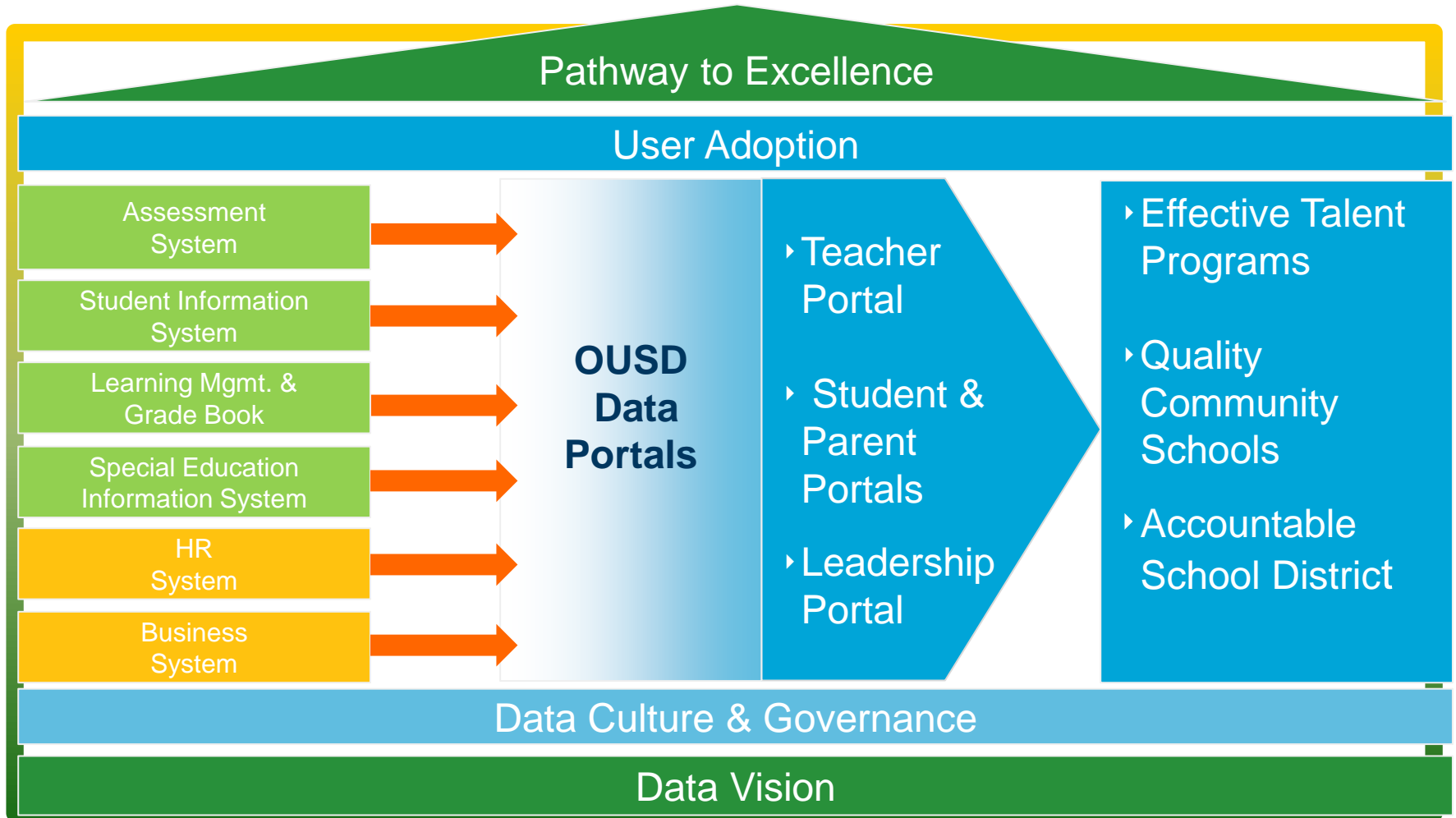
- 2014-2018 Technology Plan – Approved June 11, 2014
- 2014-2018 Technology Plan Summary – Presented August 13, 2014
- 2015-2018 Data Program – Presentation January 14, 2015

<http://www.ousd.k12.ca.us/technologyplan>

Vision



Vision Detail



Past – Present – Future

Static PDF's

Online, real time reports with drill downs

Allendale Elementary
Grades 2-5

SRI Reading Growth - 2012-13

Average Amount of Lexile Grade Growth (Fall to End Of Yr) for Indicated Student Groups

Total Students	Initial Fall Reading Grade Level Groupings:																	
	Above Expected* Grade Lev		At Expected* Grade Lev		1 Grade Lev Below Expected*		2 Grade Lev Below Expected*		3 Grade Lev Below Expected*		4 Grade Lev Below Expected*		5+ Grade Lev Below Expected*					
	#	Gr	#	Gr	#	Gr	#	Gr	#	Gr	#	Gr	#	Gr	#	Gr	#	Gr
Annual Growth Goal†	NA		1		2		3		4		5		6+					
Schoolwide Gr 2-5	190	61	-0.25	62	0.03	41	-0.12	21	0.19	5	0.60							
Grade 02	39	7	0.14	18	0.06	14	0.43											
Grade 03	54	12	0.25	20	0.20	6	-0.33	16	0.69									
Grade 04	45	12	0.92	12	0.92	16	-0.13			5	0.60							
Grade 05	52	30	-1.00	12	-1.17	5	-1.40	5	-1.40									
African American	81	20	-0.70	28	0.04	23	0.04	7	0.57	3	1.00							
African American-F	42	10	0.00	15	0.53	14	0.00	2	1.00	1	1.00							
African American-M	39	10	-1.40	13	-0.54	9	0.11	5	0.40	2	1.00							
Asian	22	11	-0.18	8	0.88			2	-2.00	1	0.00							
Asian-F	10	5	0.00	4	0.50			1	-2.00	1	0.00							
Asian-M	12	6	-0.33	4	1.25			1	-2.00	1	0.00							
Filipino	8	4	1.00	3	-0.67			1	1.00									
Latino	63	25	-0.12	19	-0.27	14	-0.36	5	0.20									
Latino-F	38	17	0.06	8	0.53	9	0.22	4	0.25									
Latino-M	27	8	-0.50	13	-0.52	5	-0.60	1	0.00									
Unspecified	8	1	0.00	2	-0.50	2	0.50	3	0.00									
EL	52	8	-1.25	16	-0.50	14	-0.29	11	-0.36	3	0.67							

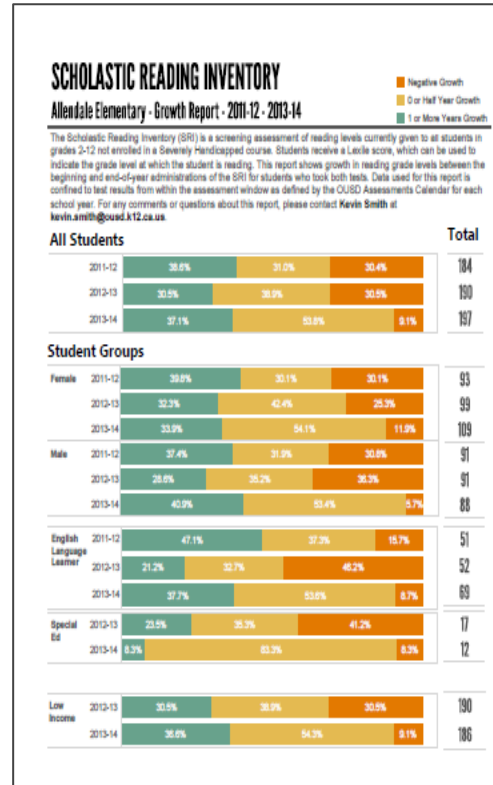
*PLEASE NOTE: Only grade & demographic groups comprised of at least 5 students are listed. In addition, only non-SDC students who had a valid English SRI score for both Admin 1 (Fall) AND Admin 3 (End Of Yr) are included in this cohort-matched report.

†Annual Growth Goal: Minimum reading grade level growth needed to be at grade level by end of year - Green indicates average growth meets goal

*Expected Grade Level in Fall is the student's previous grade level

5/7/2013

Past

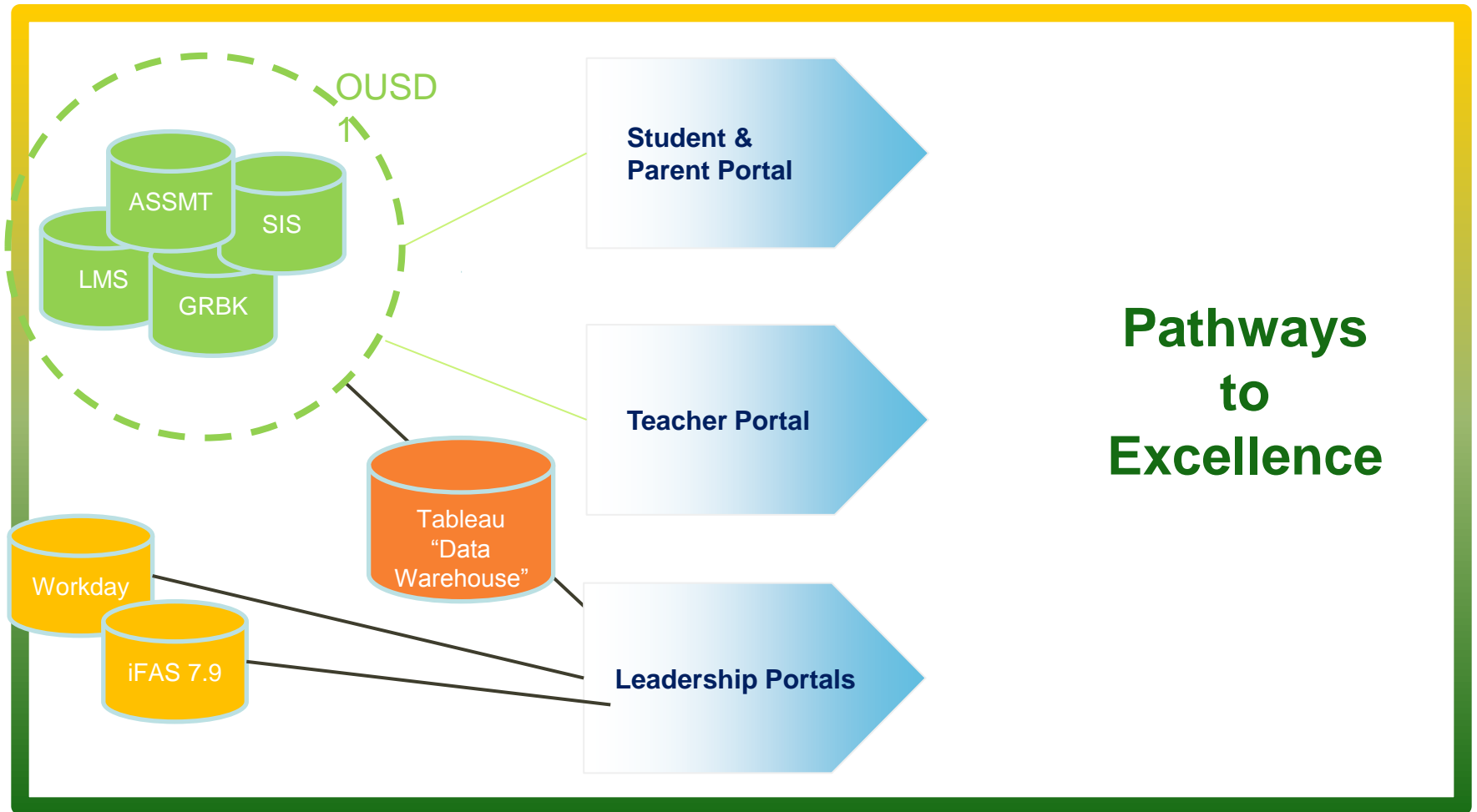


Present

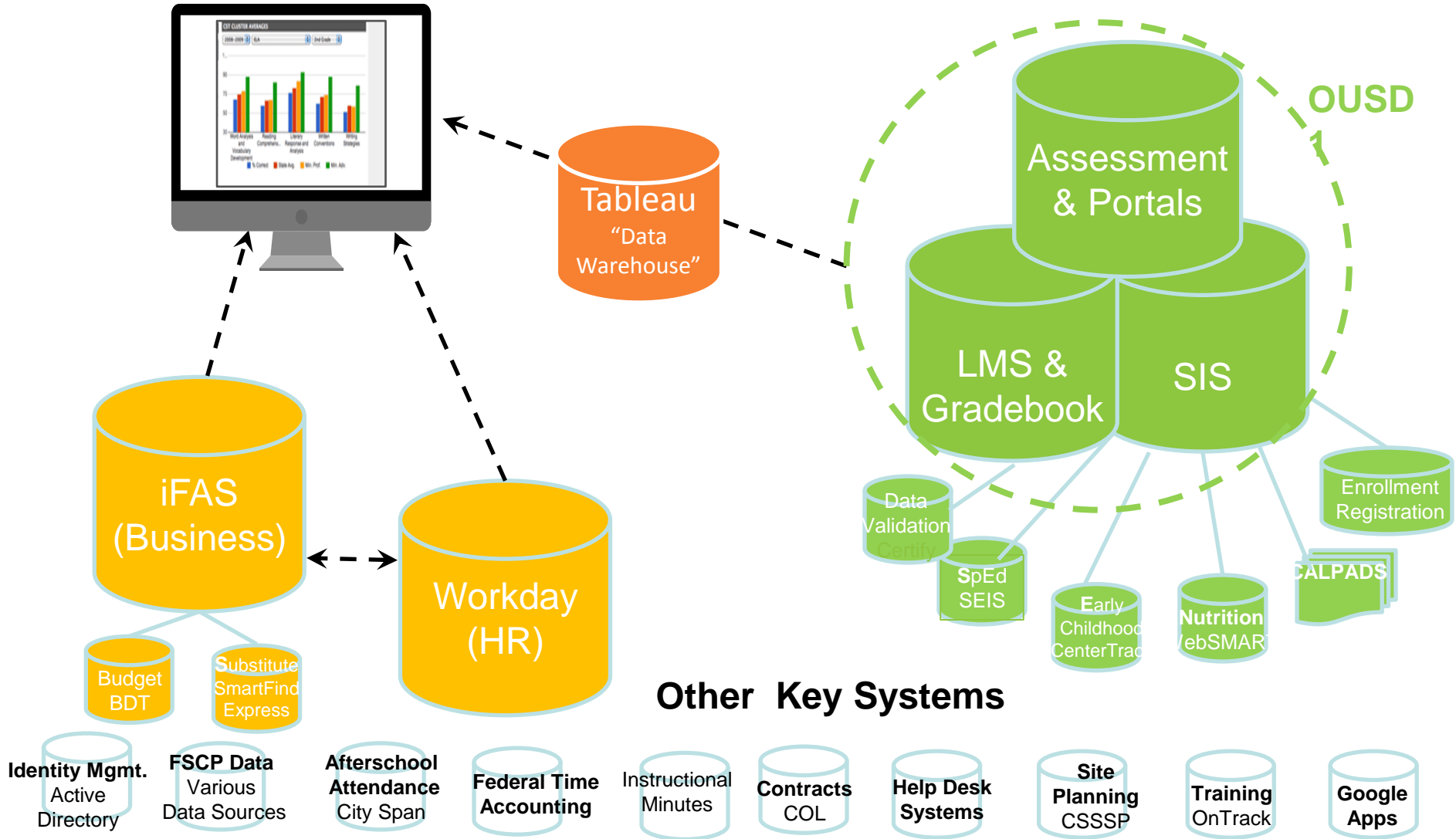


Future

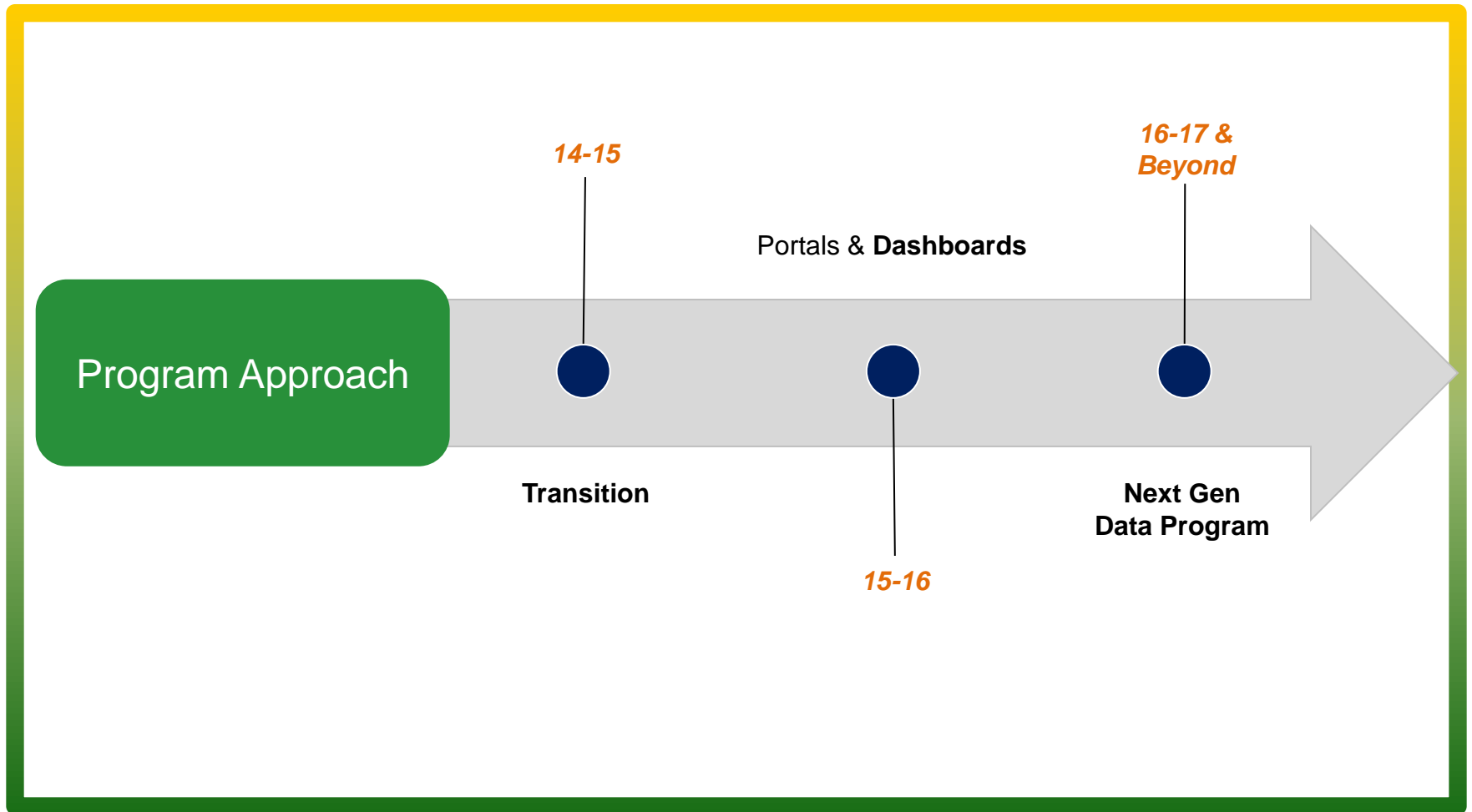
Portal Overview



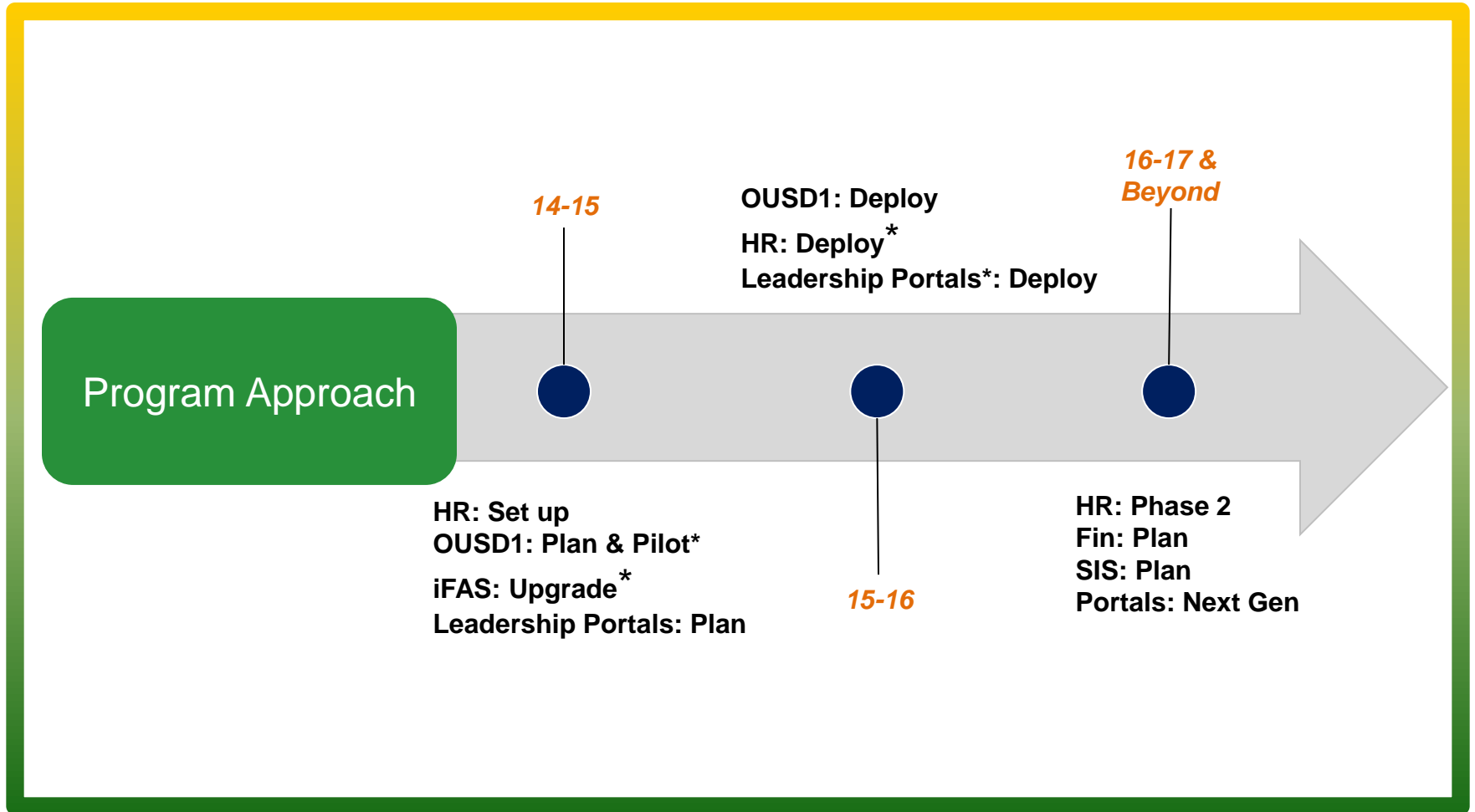
Portal Details



Timeline Overview



Timeline Detail



- DISTRICT EFFORTS &
SCHOOL SITE UPDATES

Antwan Wilson, Superintendent

CALENDAR OF COMMUNITY ENGAGEMENT OPPORTUNITIES FOR
EDUCATIONAL LEADERSHIP COMPLEX AT 2ND AVENUE

MAKE SURE YOUR VOICE IS HEARD!!

Informational Booths

- @ Dewey Jan. 5th & 26th (lunchtime)
- @ La Escuelita Jan. 12th & 20th (9-10am)
- @ La Escuelita Jan. 14th & 21st (1-3pm)

ELD2 Committee Meetings: Jan. 13th & 27th 5:30-7:00p.m.

Community Design Charrettes:

- @ Dewey Jan. 15th (9:30-10:30am)- **Dewey Students Only**
- @ La Escuelita Jan. 26th (5:30-7:00pm)

DISTRICT EFFORTS & SCHOOL SITE UPDATES

- Superintendent Work Plan Update (Committee Reminder)
- *Network 1:* Peralta students have artwork that will be displayed at Safeway on College Ave.
- *Network 2:* Think College Now report card conferences & Unity Night Program
- *Network 3:* Acorn Woodland hosts a monthly parent cafe

DISTRICT EFFORTS & SCHOOL SITE UPDATES

- *Middle School Network:* Alliance Academy participated in their 1st annual Tough Mudder Day.
- *High School Network:* Oakland High School was selected for the California College Challenge this year!