



Superintendent Report to the Board



Presented by: Kyla Johnson-Trammell

November 8, 2017

www.ousd.org



@OUSDnews



Superintendent Report to the Board



Presented by: Kyla Johnson-Trammell

November 8, 2017

www.ousd.org



[@OUSDnews](https://twitter.com/OUSDnews)



**OAKLAND UNIFIED
SCHOOL DISTRICT**

Community Schools, Thriving Students

California School Dashboard: Report on Local Indicators



Presented by

Jean Wing, Executive Director, Research Assessment & Data

Presented to OUSD Board of Education

November 8, 2017

www.ousd.org



@OUSDnews

Annual Report

New Local Indicators

- ❖ Report to Board of Education annually
- ❖ Upload to California School Dashboard by December 1, 2017

California School Dashboard



State Indicators

- 6 State Indicators (Academics: ELA and Math)
- Pre-populated by the state
- Quantitative data

5 Performance Categories:

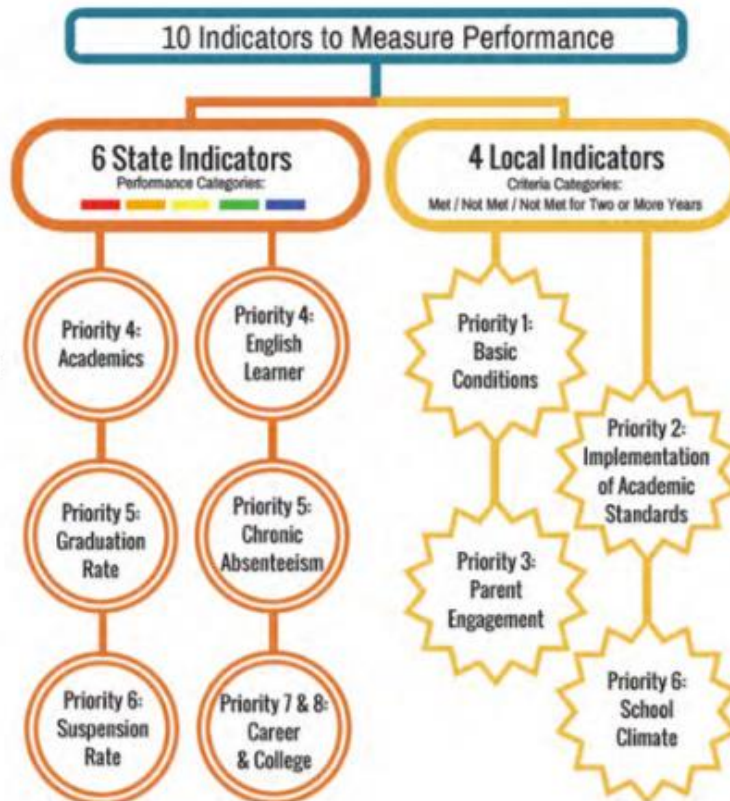
Blue

Green

Yellow

Orange

Red



Local Indicators

- 4 Local Indicators
- Districts populate them with analysis of progress from local data.
- Qualitative + quantitative data

3 Performance Categories:

Met

Not Met

Not Met for 2+ years

Priority 1:

BASIC CONDITIONS

Standard: LEA annually measures its progress in meeting the Williams settlement requirements at 100% at all of its school sites, as applicable, and promptly addresses any complaints or other deficiencies identified throughout the academic year, as applicable.

Number/percentage of misassignments of teachers of English learners, total teacher misassignments, and vacant teacher positions	54 misassignments of teachers of English learners 164 total teacher misassignments 36 teacher vacancies
Number/percentage of students without access to their own copies of standards-aligned instructional materials for use at school and at home	0 students 0% of students
Number of identified instances where facilities do not meet the “good repair” standard (including deficiencies and extreme deficiencies)	1 Exemplary 78 Good 8 Fair

Priority 2:

IMPLEMENTATION OF ACADEMIC STANDARDS

Standard: *The local educational agency (LEA) annually measures its progress implementing state academic standards.*

Rating Scale: *1 – Exploration and Research Phase; 2 – Beginning Development; 3 – Initial Implementation; 4 – Full Implementation; 5 – Full Implementation and Sustainability*

<p>Rate the local educational agency's progress in providing professional learning for teaching to the recently adopted academic standards and/or curriculum frameworks identified below.</p>	<p>3 - Initial Implementation: English Language Arts, English Language Development 2 - Beginning Development: Mathematics, Next Generation Science Standards (NGSS), History-Social Science</p>
<p>Rate the local educational agency's progress in making instructional materials that are aligned to the recently adopted academic standards and/or curriculum frameworks identified below available in all classrooms where the subject is taught.</p>	<p>3 - Initial Implementation: English Language Arts, Mathematics, Next Generation Science Standards (NGSS) 1 - Exploration and Research Phase: History- Social Science, English Language Development</p>
<p>Rate the local educational agency's progress in implementing policies or programs to support staff in identifying areas where they can improve in delivering instruction aligned to the recently adopted academic standards and/or curriculum frameworks identified below (e.g., collaborative time, focused classroom walkthroughs, teacher pairing).</p>	<p>3 - Initial Implementation: English Language Development 2 - Beginning Development: English Language Arts, Mathematics, Next Generation Science Standards (NGSS), History-Social Science</p>

Priority 2:

OTHER ADOPTED ACADEMIC STANDARDS

Standard: *The local educational agency (LEA) annually measures its progress implementing state academic standards.*

Rating Scale: *1 – Exploration and Research Phase; 2 – Beginning Development; 3 – Initial Implementation; 4 – Full Implementation; 5 – Full Implementation and Sustainability*

Other Adopted Academic Standards: Rate the local educational agency's progress implementing each of the following academic standards adopted by the State Board of Education for all students.

- **4 - Full Implementation:** Visual and Performing Arts; Career Technical Education
- **3 - Initial Implementation:** Health Education Content Standards
- **2 - Beginning Development:** Physical Education Model Content Standards; World Language

Priority 2:

SUPPORT FOR TEACHERS & ADMINISTRATORS

***Standard:** The local educational agency (LEA) annually measures its progress implementing state academic standards.*

***Rating Scale:** 1 – Exploration and Research Phase; 2 – Beginning Development; 3 – Initial Implementation; 4 – Full Implementation; 5 – Full Implementation and Sustainability*

Support for Teachers and Administrators: During the 2016-17 school year (including summer 2016), rate the local educational agency's success at engaging in the following activities with teachers and school administrators

- **2 - Beginning Development** Identifying the professional learning needs of groups of teachers or staff as a whole
- **2 - Beginning Development** Identifying the professional learning needs of individual teachers
- **3 - Initial Implementation:** Providing support for teachers on the standards they have not yet mastered

Priority 3:

PARENT ENGAGEMENT

Standard: *The local educational agency (LEA) measures its progress in (1) seeking input from parents in decision making and (2) promoting parental participation in programs.*

California School Parent Survey (CSPS)

- Administered in 2016-17 in paper and online formats
- Translated into 5 languages (Spanish, Chinese, Vietnamese, Khmer, Arabic)
- 17,253 parents/guardians submitted responses (1,484 special education parents)
- 57 schools (66%) had a parent survey response rate of 40% or higher

Provides rich information on:

Parent involvement (Priority Area 3)

Parent views on student conditions for learning (Priority Area 1)

Parent views of student engagement (Priority Area 5)

Parent views of school climate and safety (Priority Area 6)

CALIFORNIA *school parent* SURVEY
Helping schools build positive environments for student success

WestEd
Developed by WestEd for the
California Department of Education



Priority 3: PARENT ENGAGEMENT

Standard: *The local educational agency (LEA) measures its progress in (1) seeking input from parents in decision making and (2) promoting parental participation in programs.*

91.0% I feel welcome to participate at this school.



88.8% School staff treats me with respect.



91.0% School staff takes my concerns seriously.



88.5% School staff welcomes my suggestions.



92.1% School staff responds to my needs in a timely manner.



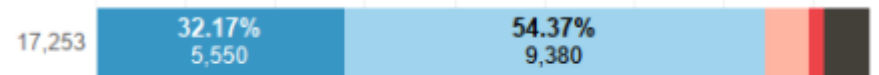
87.0% School staff is helpful.



Priority 3: PARENT ENGAGEMENT

Standard: *The local educational agency (LEA) measures its progress in (1) seeking input from parents in decision making and (2) promoting parental participation in programs.*

86.5% This school encourages me to be an active partner with the school in educating my child.



83.8% This school encourages me to participate in organized parent groups (councils, committees, parent organizations, etc.)



Priority 6: SCHOOL CLIMATE

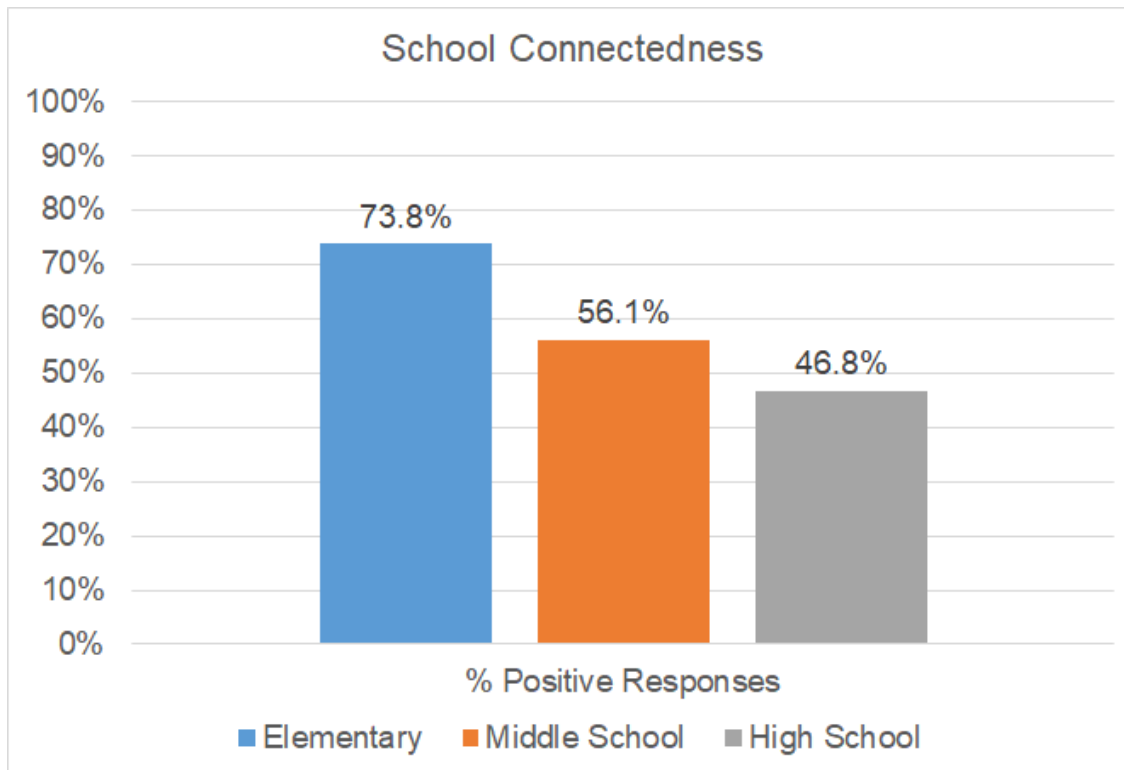
Standard: *The local educational agency (LEA) administers a local climate survey at least every other year that provides a valid measure of perceptions of school safety and connectedness, such as the California Healthy Kids Survey (CHKS), to students in at least one grade within the grade span(s) that the LEA serves (e.g., K-5, 6-8, 9-12).*

California Healthy Kids Survey (CHKS)

- Administered in 2016-17 to all students in grades 5-12
- District-wide student participation rate was 73.3%
- 63 schools had a participation rate of 70% or higher



Priority 6: SCHOOL CLIMATE – School Connectedness



Questions

- I feel close to people at this school.
- I am happy to be at this school.
- I feel like I am part of this school.
- The teachers at this school treat students fairly.
- I feel safe in my school.

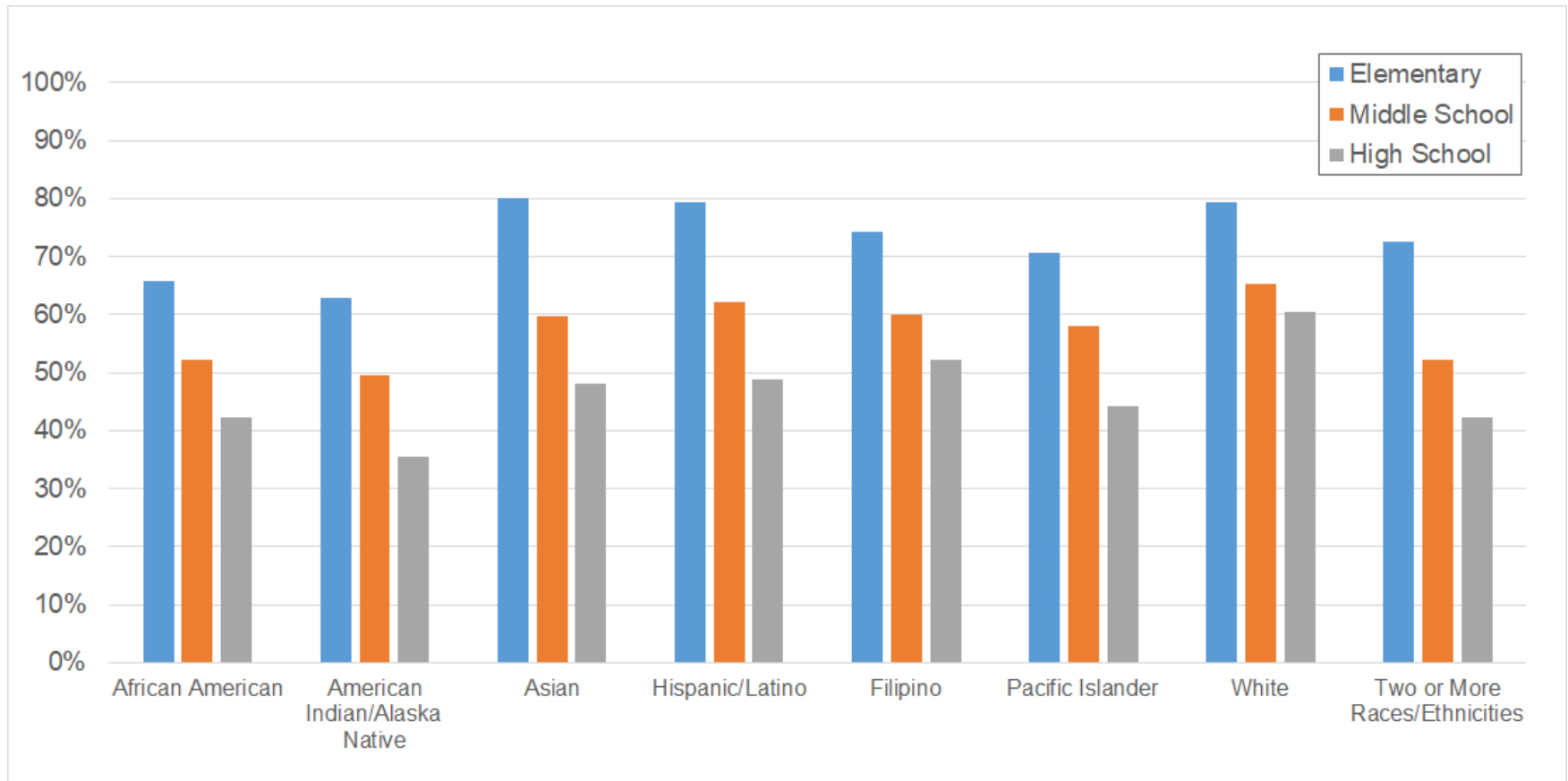
Response Options

Elementary (4 point scale): Yes, all of the time, Yes, most of the time, Yes, some of the time, No, never

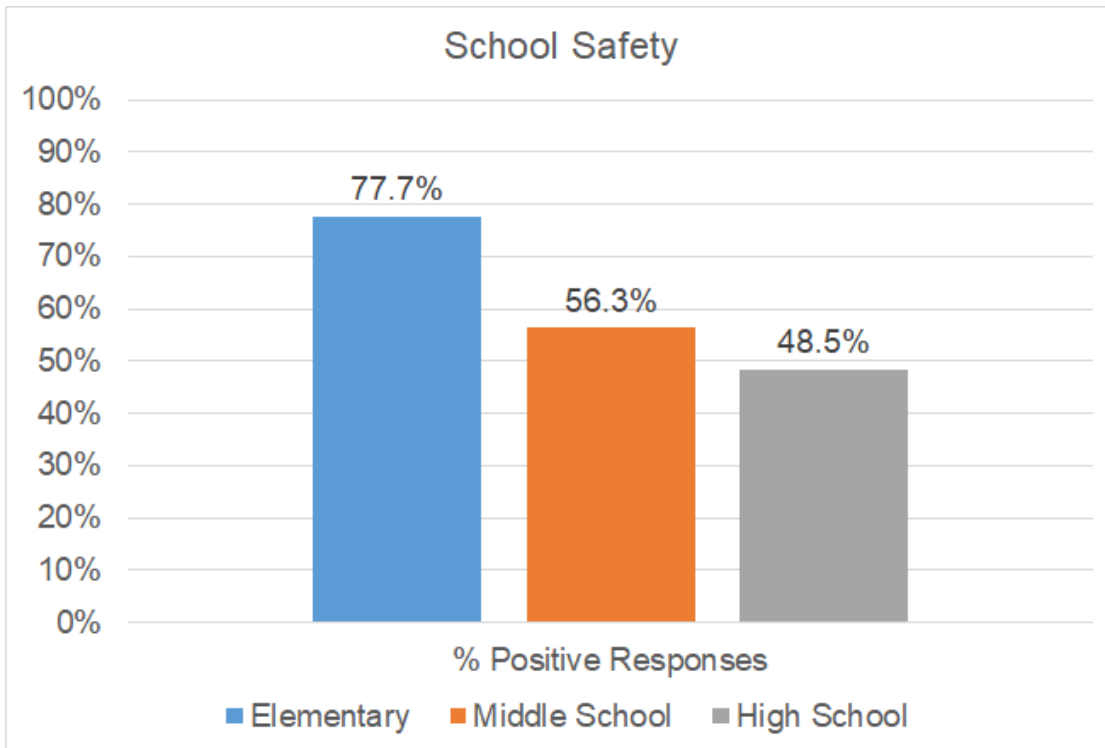
Secondary: (5 point scale) Strongly agree, Agree, Neither disagree nor agree, Disagree, Strongly disagree

Priority 6: SCHOOL CLIMATE – School Connectedness

% of Students Reporting High Levels of School Connectedness



Priority 6: SCHOOL CLIMATE – School Safety



Questions

Elementary: Do you feel safe in school?

Secondary: I feel safe in my school.

Response Options

Elementary:

Yes, all of the time

Yes, most of the time

Yes, some of the time

No, never

Secondary:

Strongly Agree

Agree

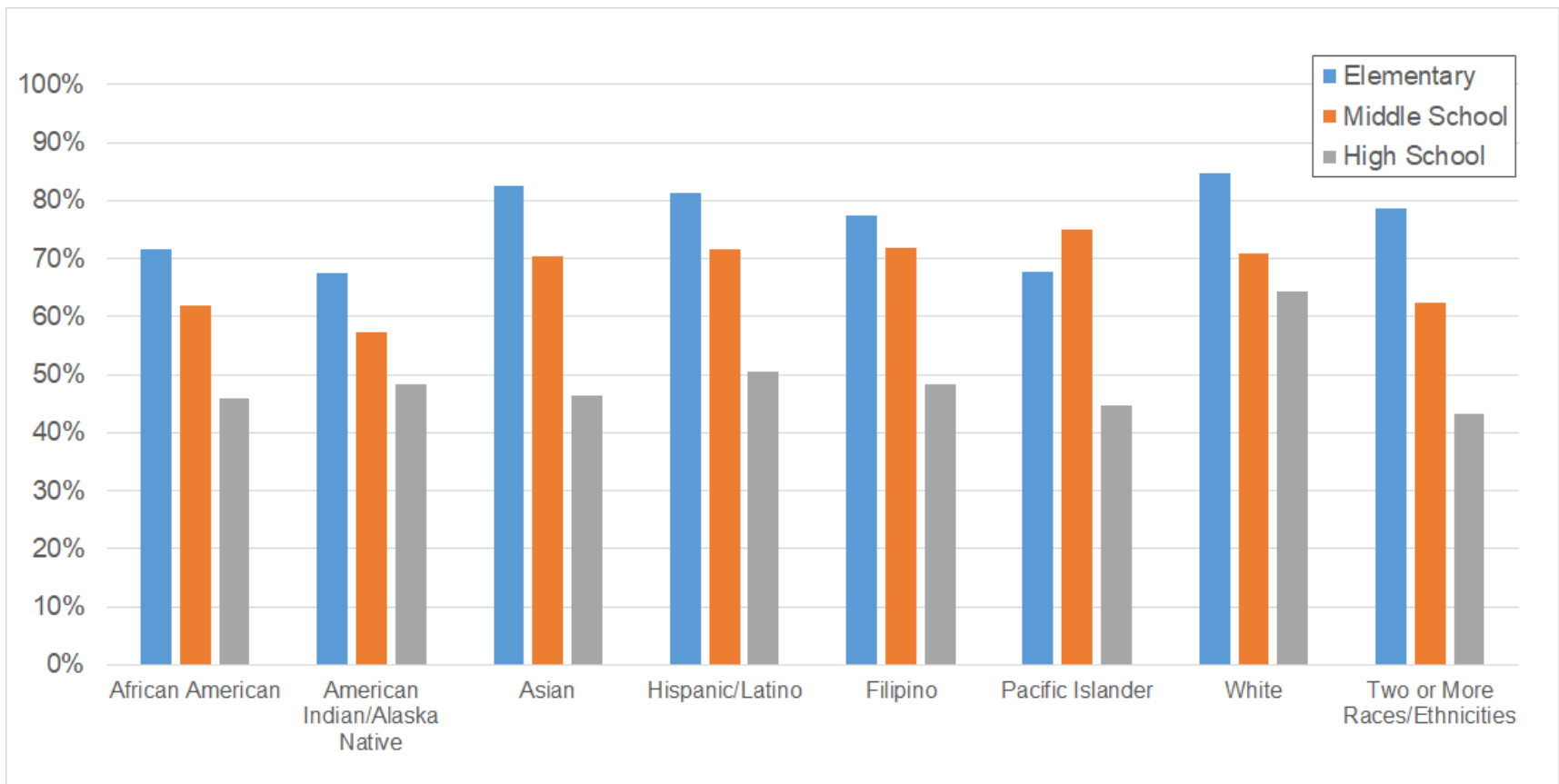
Neither Agree Nor Disagree

Disagree

Strongly Disagree

Priority 6: SCHOOL CLIMATE – School Safety

% of Students Reporting High Levels of School Safety





**OAKLAND UNIFIED
SCHOOL DISTRICT**

Community Schools, Thriving Students

Oral Report

Update on lead testing for schools

Early Childhood successes

Highlights from recent school visits



Presented by

Jean Wing, Executive Director, Research Assessment & Data

Presented to OUSD Board of Education

November 8, 2017

www.ousd.org



@OUSDnews

EVERY STUDENT THRIVES!



**OAKLAND UNIFIED
SCHOOL DISTRICT**
Community Schools, Thriving Students

1000 Broadway, Suite 680, Oakland, CA 94607

www.ousd.org



@OUSDnews

Contact us for additional information [optional contact area]
Phone: 510.555.5555 | Email: info@ousd.org