

What is SEL?


Social and emotional learning (SEL) is a process through which children and adults develop the fundamental skills for life effectiveness. These are the skills we all need to handle ourselves, our relationships, and our work effectively and ethically.




Everyone strengthens their social competencies to connect across race, class, culture, language gender, sexual orientation, and age.

SEL as a Key Lever to Shifting Our Organizational Culture

Shifts in our organizational practices and culture will change as adults across the system strengthen their SEL skills and competencies. *If we...*

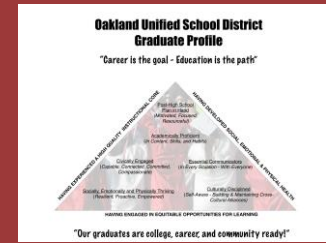


Increase our ability to effectively build relationships and social awareness, thereby creating a more inclusive, caring environment, decreasing disproportionality, and preparing our students with 21st Century skills, *then...*

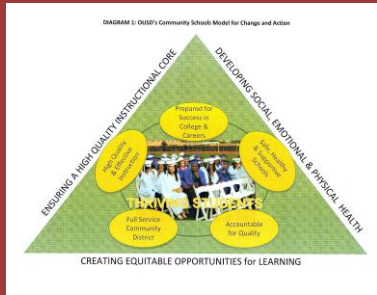


Our students will graduate and be successful in college, career, and community.

Current SEL Connections



Graduate Profile



Strategic Plan



Students



District Leaders



CCSS & NGSS



Teachers & Teacher Leaders

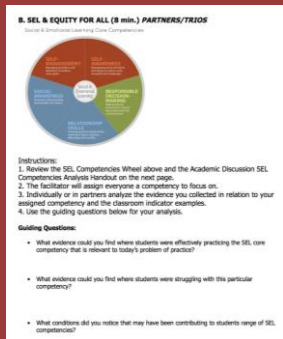


SEL Journey Map

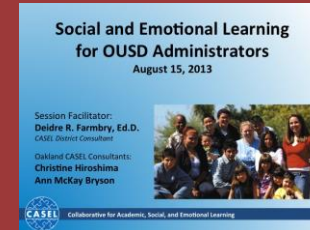


Parents

Examples of SEL in Action from the Adult to Student



At the School Site
Instructional Rounds
capturing data on SEL in
school-wide practices



Leaders
All-Admin.
Institute and
Principals'
ILT PD



Teachers
Teacher Leader
Collaborative And
Instructional
Leadership Team PD
for CSC/SEL
Inquiry Cohort



Students
Academic Discussion

Measurements of SEL Impact

Databases:

- AERIES, Edusoft, CHKS, Survey Monkey, CORE Metrics (2013-2014)

Evaluators:

- AIR, CASEL, DSC, QAA



Impact of SEL from Our Students and Adults

“It has made me more aware and empathetic, and aware of the emotional tone of my classroom.”



“These skills let you be yourself and it lets me see life from a different perspective.”



“I don’t know how I could do the job of principal without Social and Emotional Learning.”



“It really starts with me. Modeling in meetings, modeling time for people to share who they really are...”