



2014-15 Preliminary **Strategic Regional Analysis**

Board Presentation
February 11, 2015

Strategic Regional Analysis (SRA)

- The **Strategic Regional Analysis (SRA)** is a factual, data-driven, key planning document that supports the OUSD Strategic Priorities in the *Pathway to Excellence – 2015-2020*. Our goal is to ensure that we are good stewards of our schools and are expanding our portfolio of quality schools.
- In every area of our city, we must provide our families and community with access to a quality school. Our School Performance Framework will anchor and level-set our expectations around **quality**.
- The SRA details the current state of school performance, demographics, enrollment patterns, choice, and capacity by region, and identifies the gaps for each. This document is intended to identify the areas in need of additional resources to improve the quality options available to increase student achievement.
- The SRA will inform how we fund, support, and resource our schools.
- A key subsequent process to the SRA is the **Call for Quality Schools** that invites applicants to propose innovative ways to improve and expand the number of quality school options. It will address gaps identified in the SRA.

Strategic Regional Analysis (SRA)

What it is ...

- A starting point for discussion
- Factual (quantitative) data on the state of our district
- An objective look into our district's portfolio of schools
- Showcases the need for urgency and for expanding quality options in every neighborhood
- Information for the *Pathway to Excellence* committees to inform recommendations

What it is not ...

- Intended to blame teachers, leaders, or communities for the information in the SRA
- Meant to be an end all or capturing of the complete picture
- A conclusion to discussion

It's the District's responsibility to address: Access, Equity, Quality, and Resources to improve the outcomes for students. **We are all needed in this pursuit of Excellence!**

Strategic Regional Analysis (SRA)

- **School Environment/Place Matters:** compares neighborhood stress factors where each school is located. Environmental stress factors are measured across all regions.
- **Demographics & Enrollment:** describes the number and demographics of students attending OUSD schools, and projects next year's enrollment.
- **Capture gap:** describes the gap between the number of school-aged children living in a region and the number of students attending OUSD schools.
- **Transition gap:** describes the rate of students leaving district-run schools in each region in the transition from grade 5 to 6, and grade 8 to 9. The attrition rate indicates a need for quality middle school and high school options to attract and retain students.
- **Performance gap:** identifies gaps in the performance of schools in each region.
- **School choice:** identifies schools that are most chosen, schools that are least chosen, and what happens when families do not get their first choice.

Background

2000 - Present

- **Declining enrollment** of combined OUSD district-run and OUSD charter schools – from 55,000 to 48,000 since 2000.
- **Demographic shifts** have reduced the proportion of African American students from 48% to 28% since 2000, while Latino student enrollment has grown from 29% to 42% over the same period. Many more English Learners (Latino, Asian, Arab) are expanding from Central Oakland into East and West Oakland, and newcomer students have increased.
- **2001-2007: New small school creation**, mostly in Central and East regions. Small high school conversions at Fremont (2003), Castlemont (2004), and McClymonds (2005). Equity goal to provide quality schools in every neighborhood, and to relieve overcrowding in some Central and East Oakland schools.
 - This school transformation strategy for district-run schools was explicitly linked to site-based budgeting (RBB) to keep maximum resources in the hands of those closest to students, and Options/Choice so that families would not be forced to attend low performing neighborhood schools (both policies enacted c. 2005)
 - Many of the new schools outperformed the schools that they replaced, and supported Oakland as the “most improved large urban district in California” from 2005-2013.
 - With declining enrollment and Options/Choice, some schools have become unsustainably small

Background

2000 - Present

- Growth of charter schools, including district school conversions to OUSD or Alameda County-authorized charters. The number of charter schools in Oakland grew rapidly from 9 OUSD charters in 2000-01 to 28 in 2005-06. Currently in 2014-15, there are 38 charter schools in Oakland (32 OUSD charters, 6 Alameda County-authorized charters). From 2006-07 to the present, 6 district-run schools have converted to charters.
- Most charter schools are located in high poverty areas of East and West Oakland.
- Currently, OUSD has 118 schools – 86 district-run schools and 32 charter schools, serving 48,000 students.

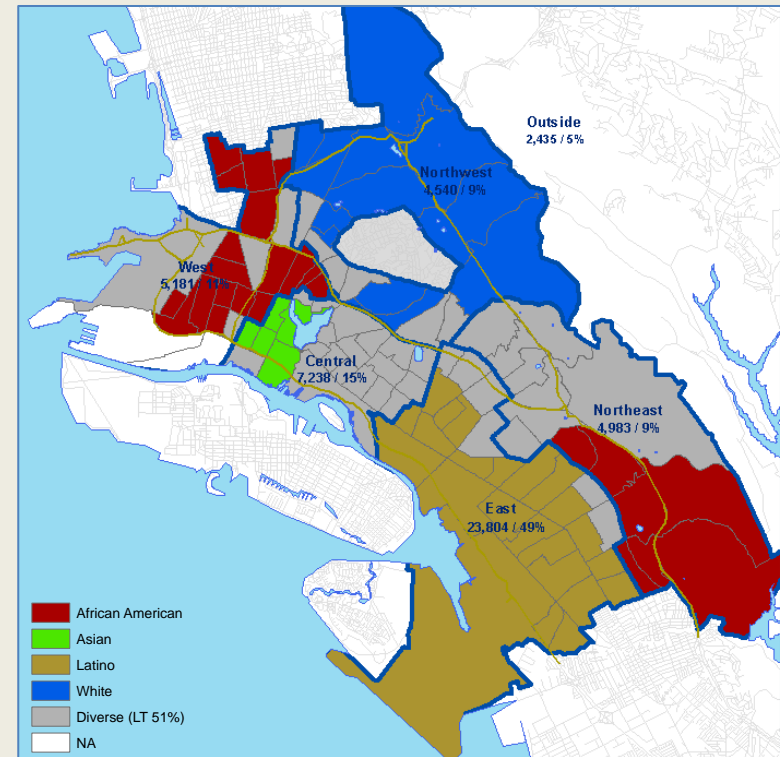
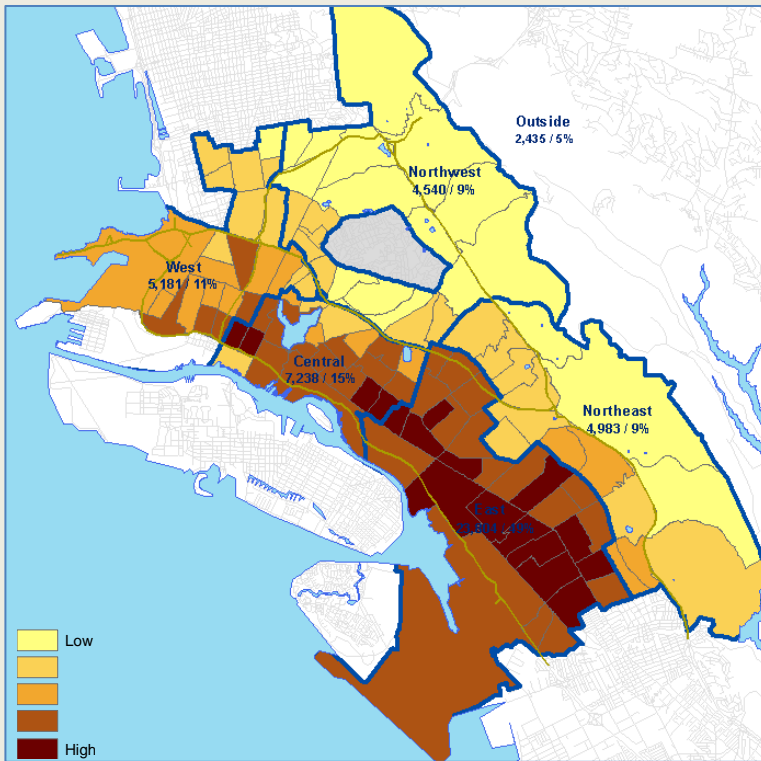
5 Regions defined

A central purpose of the Strategic Regional Analysis is to provide a picture of where we have quality schools and where we do not. The SRA will help guide our planning so that all students, including those with the highest need, have full access to high quality schools from pre-K-12 within their neighborhoods and region. The SRA is about *equity and access*.

In determining the boundaries, we looked at whether there were shared factors for students and families living in different parts of Oakland with respect to income/poverty, language, race/ethnicity and culture. The five SRA regions – West, Northwest, Central, Northeast, and East -- allow for the particular assets and needs of different communities to be visible within the larger citywide discussion about quality public school programs and facilities in every part of Oakland.

Note: The East Region is by far the largest in enrollment, and can be divided into at least 2 sub-regions in future subregional analyses.

5 Regions defined

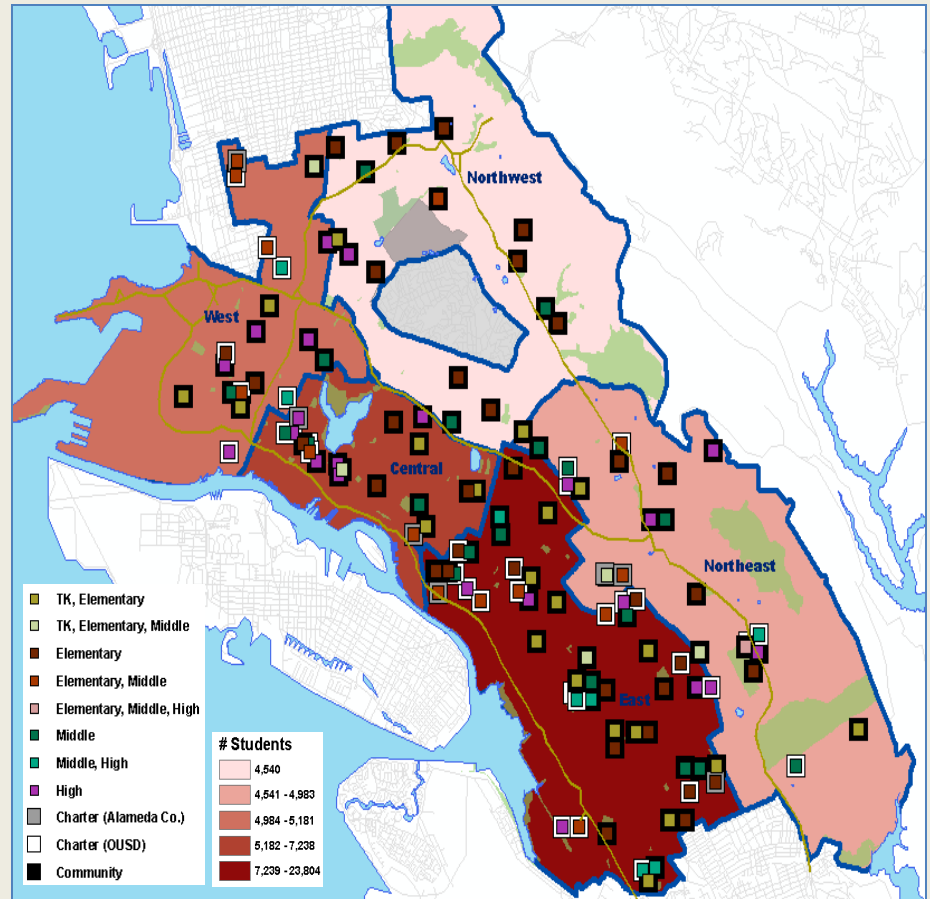


- **SRA divides Oakland into 5 regions – West, Central, East, Northwest and Northeast.**
 - Comparative analysis for each census tract based on an index of four factors:
 - % of students eligible for free or reduced price lunch
 - % of population on MediCal
 - % of students who are English Language Learners
 - % of students for whom English is not their home language
 - The darker the color of the census tract, the higher the needs of the students with respect to poverty and English fluency.
 - Majority student race/ethnicity for census tracts with greater than 51% concentration of any one race/ethnicity.

Executive Summary

I. Regions & Schools

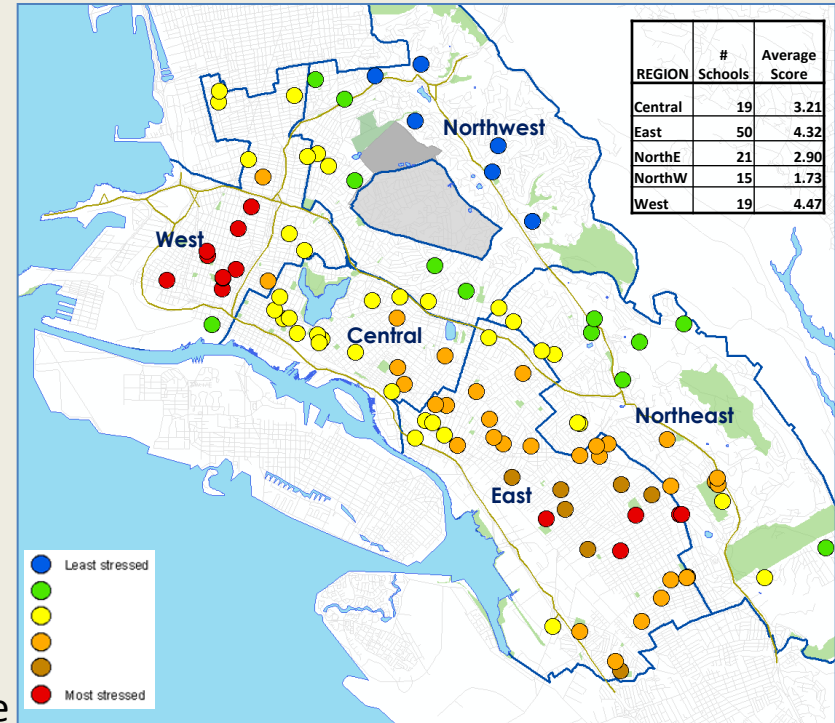
- **124** district-run public schools and charter public schools in Oakland
 - **West:** 19 schools
 - **Northwest:** 15 schools
 - **Central:** 19 schools
 - **Northeast:** 21 schools
 - **East:** 50 schools
- Charter schools comprise larger share of public schools in East and West Regions



Executive Summary

II. School Environment

- **Place matters.** Schools located in neighborhoods with the highest levels of Environmental Stress Factors are heavily concentrated in the West and East regions.
- Environmental stress factors tend to be interrelated and concentrated in certain geographic areas of Oakland where:
 - Violent crime, unemployment, housing vacancy, and poverty rates are high
 - Air quality is poor
 - Access to fresh food is limited
 - Liquor stores may outnumber grocery stores
- These environmental stress factors have a compounding effect on schools located in the most disinvested parts of the city, largely serving students who come from the surrounding communities.

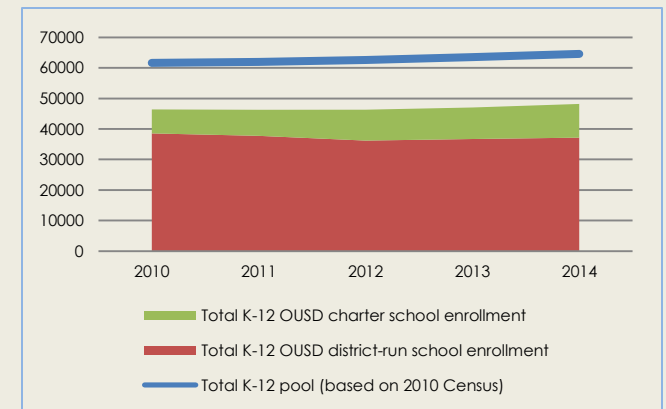
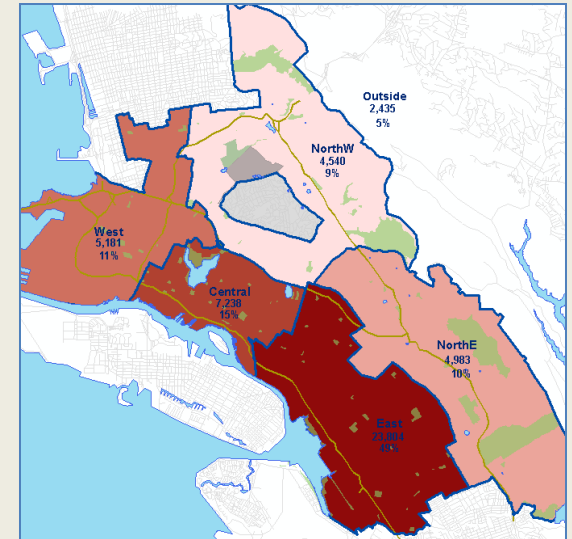


Data inputs: violent crime; fresh food access; income; unemployment; student asthma/air quality; liquor stores; residential vacancy.

Executive Summary

III. Demographics & Enrollment

- **Enrollment:** Over past 5 years, combined enrollment in OUSD district-run and charter schools remains stable at about 48,000, with OUSD charter schools increasing their share (now 23%).
- **Demographics:**
 - The largest racial/ethnic group remains Latino (42.8%)—a slight increase from 41.1% since 2011-12.
 - The second largest racial/ethnic group, African Americans, had a decrease from 30.5% to 27.9% over the past three years.
 - English Language Learners (ELL): a slight increase from 28.9% to 30.8% since 2011-12.
- **“Capture Rate”:** The percent of Oakland school-aged children enrolled in OUSD district-run & OUSD charter schools = 75% in grades K-12
 - Kindergarten has highest capture rate (87%)
 - Grade 9 has the lowest capture rate (79%)



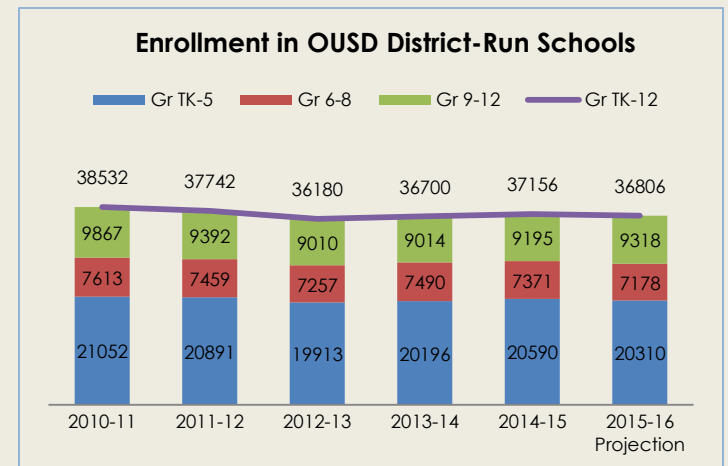
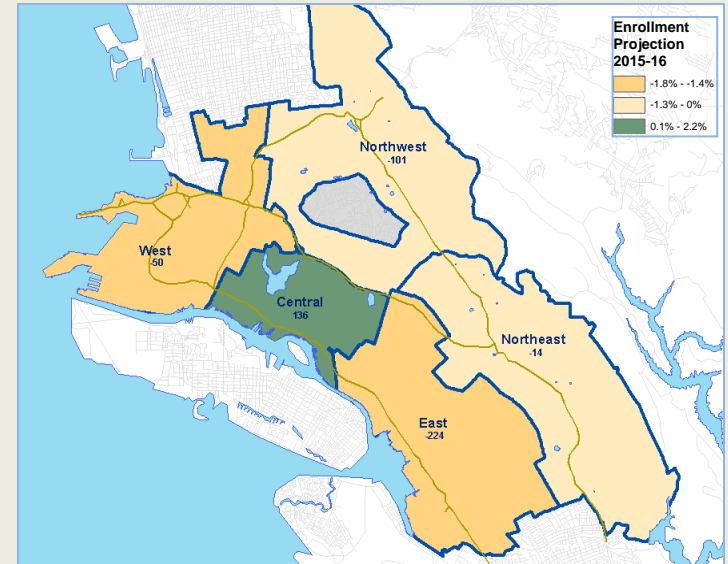
	2010	2011	2012	2013	2014
Capture Rate	75.3%	74.7%	74.0%	74.0%	74.6%

Executive Summary

III. Demographics & Enrollment

- Enrollment Projection:**

- 2015-16 overall enrollment in OUSD district-run schools is expected to decline by 253 (0.6%) students. All regions will likely decline, except for the Central region, which is projected to experience a 2.2% increase of 136 students.
- Declining enrollment in OUSD district-run schools may reflect growth in enrollment in OUSD charter schools, which have experienced a steady three year enrollment growth rate of 30% between 2011 and 2014.

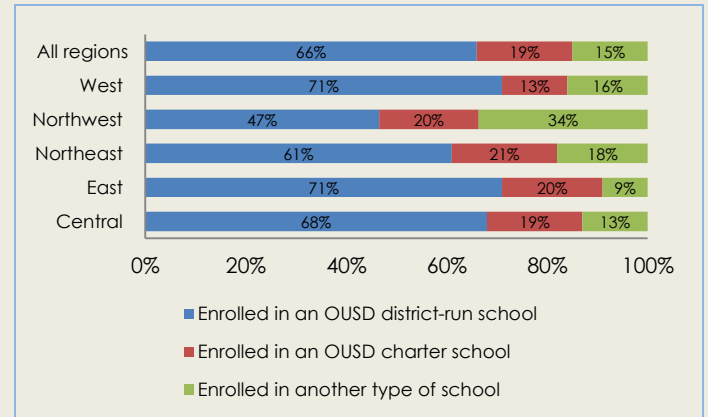


Executive Summary

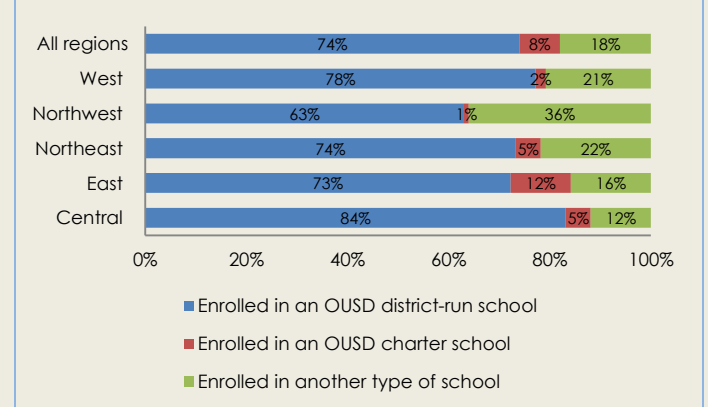
III. Demographics & Enrollment

- **Transition grades:**
 - About **one in three** students who attended OUSD district-run schools in Grade 5 enroll in another type of school for Grade 6 (OUSD or County-authorized charter, private school, other district, etc.). In the Northwest region, the rate is **one in two** students.
 - About **one in four** students who attended OUSD district-run schools in Grade 8 enroll in another type of school for Grade 9 (OUSD or County-authorized charter, private school, other district, etc.). In the Northwest region, the rate is more than **one in three**.
 - These numbers indicate the need for more quality OUSD district-run school options for middle school and high school.

Grade 5 to 6 Transition



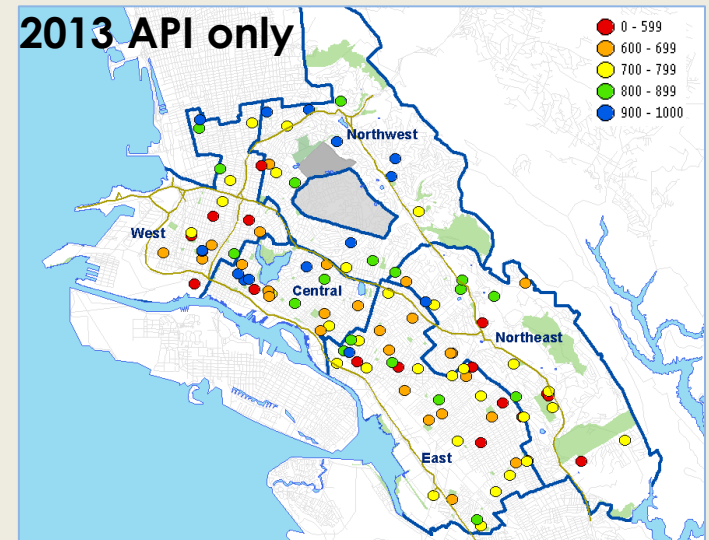
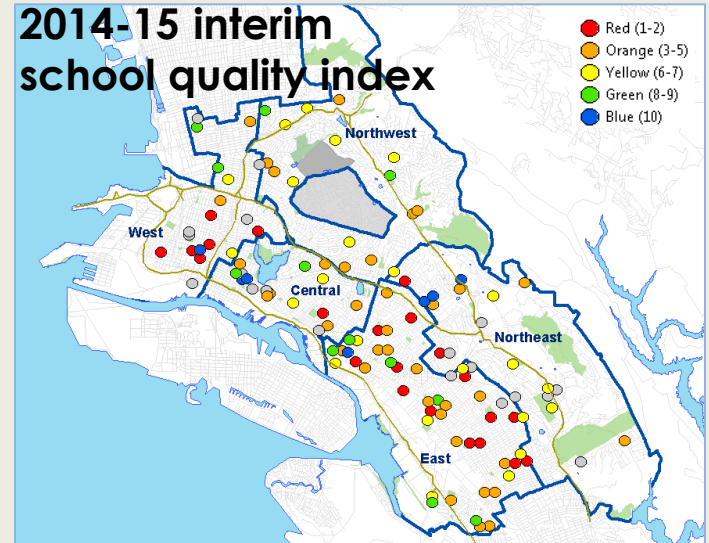
Grade 8 to 9 Transition



Executive Summary

IV. School Performance: 2014-15 school quality index vs. 2013 API only

- **2014-15 interim school quality index:** Shows distribution of “red” (lowest quality) schools across West, Central, and East regions. “Blue” (highest quality) schools in any region are all charter schools, except for Lincoln Elementary.
- Using most recent available data for indicators that are common to OUSD district-run and charter schools, the interim school quality index includes:
 - 2013 Academic Performance Index (API)
 - 2013 Similar Schools Rank
 - 2013 cohort graduation rate (high schools)
 - 2013 A-G completion rate (high schools)
 - Inclusion of Similar Schools Rank in the 2014-15 interim school quality index makes visible schools with high or low APIs as compared to 100 California schools *with similar students and conditions*.
 - **Note: Schools missing key index data appear in gray**
- Enrollment by school quality as measured by 2014-15 interim school quality index:
 - Central region has highest % of K-12 students in blue/green schools based on 2014-15 school quality index (23%)
- Enrollment by 2013 API only:
 - Northwest has highest % of K-12 students in blue/green schools (800-1000 API) based on 2013 API only (68%), and almost all Northwest students attend a blue/green elementary school (93%)
 - Central region has next highest % of students in blue/green schools based on 2013 API only (42%), and almost two of three Central students attend a blue/green elementary school (64%)

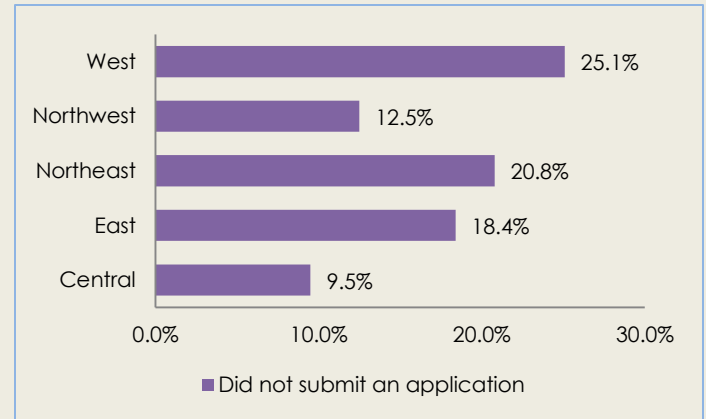


Executive Summary

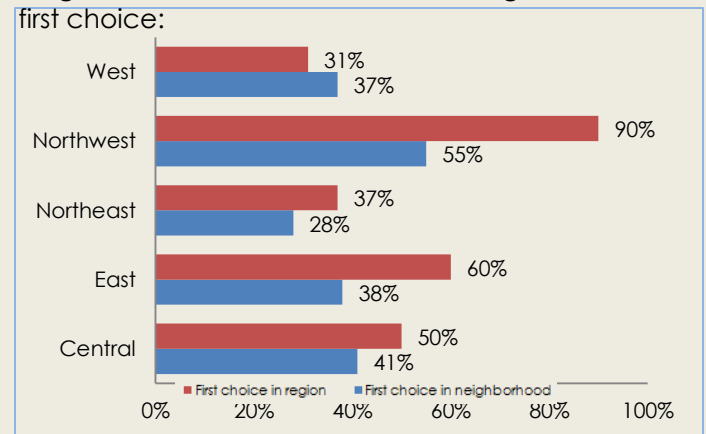
V. School Choice (OUSD district-run schools only)

- Families submitting applications for district-run school choices (during or after Options window):
 - # of applications has declined somewhat over 5 years
 - West has highest rates of families who did not submit an application. Central has lowest rates.
- Families choosing a district-run school in neighborhood attendance area or larger region (K-12)
 - Northwest had highest rates (55% in neighborhood attendance area, 90% in region)
 - West and Northeast had lowest rates

Grade 5 families enrolled in OUSD district-run school that did not submit an application for **grade 6** district-run school:



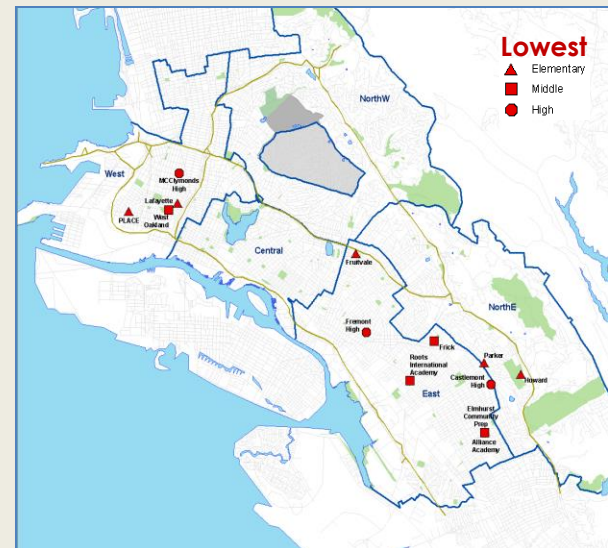
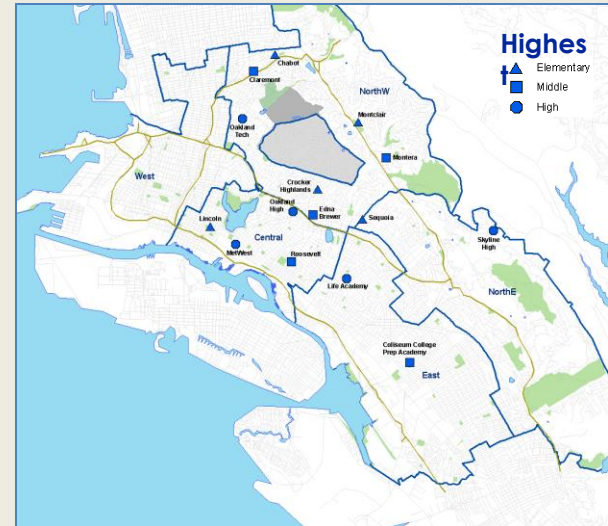
Families choosing a district-run school in their **neighborhood** attendance area or **region** as their first choice:



Schools with the **highest/lowest** number of first-choice applications

V. School Choice (OUSD district-run schools only)

- 11 of the 15 **most chosen** schools are in Central and Northwest regions
- 13 of the 15 **least chosen** schools are in West and East regions
- Almost all of the most frequently chosen Kindergarten schools are in region where family lives.
- For grades 6 and 9, many families choose outside their region.

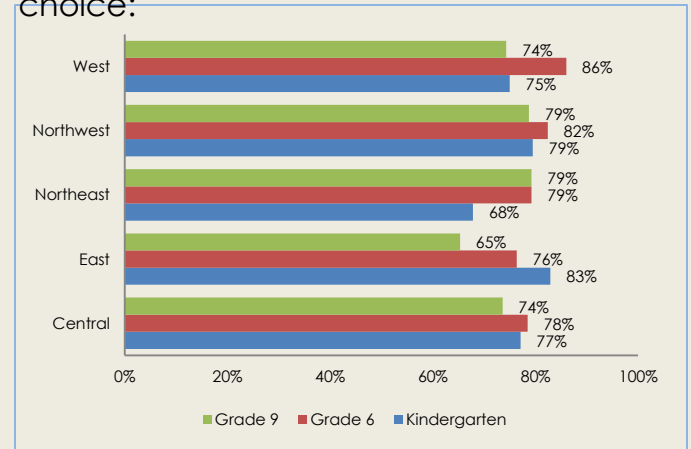


Executive Summary

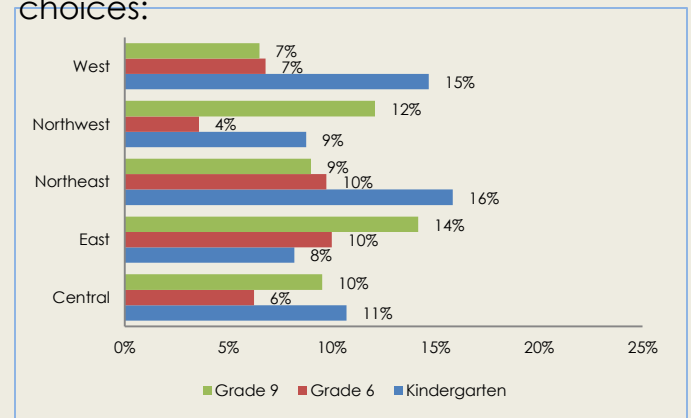
V. School Choice (OUSD district-run schools only)

- Most families get their **first** choice.
 - At least 75% of families are initially assigned their first choice for K, except for Northeast (68%).
 - At least 76% of families are initially assigned to their first choice for grade 6.
 - At least 74% of families are initially assigned to their first choice for grade 9, except for East (65%).
- 4% to 16% of families are assigned to **none** of their choices. Some of these are late applications submitted after the January deadline for inclusion in the Options lottery.
- Families who did not get their first choice school were much less likely to enroll in an OUSD district-run school.

Families **assigned** to their first choice:



Families **assigned** none of their first choices:



Executive Summary

V. School Choice (OUSD district-run schools only)

- **Choosing for academic performance:**
 - Families who submit applications are generally choosing schools with higher APIs.
 - For example, in the West, families are choosing outside of a region with “red” and “orange” API schools (API of 699 or less). Many are choosing and enrolling in higher API schools outside the region.
 - This also means that least chosen West region schools are largely filled by default assignments of students in their neighborhood attendance areas.

All Grades	Avg. neighborhood school API	Avg. 1st choice school API	Avg. final assigned school API	Avg. enrolled school API
Central	726	757	734	742
East	682	713	690	701
Northeast	700	768	738	751
Northwest	806	844	821	841
West	639	741	699	711

Executive Summary

V. School Choice

- **Live-Go patterns for OUSD district-run and charter schools:**
 - Patterns of where students live and where they go to school vary by region and grade level.
 - Northwest has the highest rate of students who live and go to school in the region (81%).
 - Northeast has the lowest rate (44%), followed by West (51%).

LIVE/GO:REGION													
	GO: Central		GO: East		GO: NorthE		GO:NorthW		GO: West				
	#	%	#	%	#	%	#	%	#	%	TOTAL LIVE	TOTAL GO	NET GO
LIVE: Central	4,333	60%	879	12%	514	7%	976	13%	536	7%	7,238	7,767	529
LIVE: East	2,040	9%	16,074	68%	3,428	14%	1,297	5%	965	4%	23,804	19,265	-4,539
LIVE: Northeast	332	7%	1,047	21%	2,188	44%	1,124	23%	292	6%	4,983	6,585	1,602
LIVE: Northwest	160	4%	46	1%	362	8%	3,682	81%	290	6%	4,540	8,693	4,153
LIVE: West	710	14%	185	4%	238	5%	1,408	27%	2,640	51%	5,181	5,871	690
LIVE: Outside	356	15%	408	17%	317	13%	206	8%	1,148	47%	2,435		
TOTAL	7,931		18,639		7,047		8,693		5,871		45,746	48,181	2,435

Executive Summary

V. School Choice

- **Distance travelled:**
 - OUSD students travel a total of 127,037 miles each way to OUSD district-run and charter schools daily.
 - Students attending an OUSD district-run or charter school in the West travel the greatest average distance to school (5.4 miles each way).

	DISTANCE TRAVELED			
	LIVE		GO	
	Total Miles	Average Miles	Total Miles	Average Miles
LIVE: Central	11,429	1.58	19,476	2.52
LIVE: East	50,355	2.12	27,795	1.45
LIVE: Northeast	16,685	3.35	21,150	3.22
LIVE: Northwest	7,231	1.59	26,956	3.11
LIVE: West	11,043	2.13	31,661	5.42
LIVE: Outside	30,295	13.41		
TOTAL	127,037	2.65	127,037	2.65

Regional Summary: Central

I. Region & Schools	<ul style="list-style-type: none"> •The Central region holds 19 schools, including 4 district-authorized and 2 county-authorized charter schools. •The western part of the region is majority Asian, and the rest is diverse, with no single ethnic majority.
II. School Environment	<ul style="list-style-type: none"> •Schools in the Central region experience medium-low to medium levels of environmental stress compared to other regions. •Schools in the eastern part of the Central region have higher levels of environmental stress than those to the west.
III. Demographics & Enrollment	<ul style="list-style-type: none"> •7,238 students attending OUSD live in the Central region, which makes up 15% of all OUSD students. •About 17% of students living in the Central region are enrolled in a district charter school. •The region has among the highest rates of students who are English Learners (38%) and eligible for free/reduced lunch (83%). •The region has the second highest K, 6, and 9 capture rates (only the East region has a higher rate), all above 84% •The Central region's grade 5 to 6 attrition is near the district average, at 33%. About 19% of grade 5 students in district-run schools enroll in a district-authorized charter school for 6th grade and 13% enroll in another type of school. •The Central region has the lowest grade 8 to 9 attrition, at 17%. About 5% of all grade 8 students in district-run schools enroll in a district-authorized charter school for 9th grade and 12% enroll in another type of school.
IV. School Performance	<ul style="list-style-type: none"> •4 of the 19 schools in the Central region are "green" (Cleveland, Oakland Charter High) or "blue" schools (Lincoln, Epic). The modal school in the region is Orange. There is 1 "red" schools (Roosevelt). •The Central region has the highest rate of K-5 students attending a "blue" or "green" school (1 in 3). •West, Central, and East all have between 1 in 6 and 1 in 5 grade 6-8 students attending a "blue" or "green" school. •Central and East have the highest rate of grade 9-12 students attending a "blue" or "green" school, but is just 1 in 10.
V. School Choice	<ul style="list-style-type: none"> •Families in the Central region have the highest rates of participation in the options process and on-time enrollment. •Half of families living in the Central region select a school in the Central region as their first choice. 41% select a school in their neighborhood as their first choice. However, these rates fall in middle and high school. •Lincoln, Roosevelt, MetWest and Oakland High are among the district's most in-demand schools in terms of number of 1st choice applications received. No schools in the Central region received the lowest number of applications. •Most families living in the Central region apply to Lincoln for K, Edna Brewer for grade 6, and Oakland Tech for grade 9. •15% of families living in the Central region who apply to kindergarten in OUSD do not enroll in a district-run school. 19% of families who apply to grade 6 in OUSD enroll in a district-authorized charter school; 13% enroll in another type of school. 4% of families who apply to grade 9 in OUSD enroll in a district-authorized charter school; 15% enroll in another type of school. •60% of families living in the Central region attending a district-run school attend a school in the region. 47% attend a school in their neighborhood. •Students living in the Central region travel the least to school (1.6 miles, the same as students in the Northwest region). •The average neighborhood school API is 726, but families ultimately attend schools with an average API of 742 thanks to both the choice system and charter schools offering options for higher-API schools.

Regional Summary: **East**

I. Region & Schools	<ul style="list-style-type: none"> •The East region holds 50 schools, including 16 district-authorized and 1 county-authorized charter schools. •Most of the region is majority Latino, although the area bordering the Northeast region is diverse, with no single ethnic majority.
II. School Environment	<ul style="list-style-type: none"> •Schools in the East region experience medium to very high levels of environmental stress compared to other regions. •Schools in the central part of the East region have higher levels of environmental stress than elsewhere in the region.
III. Demographics & Enrollment	<ul style="list-style-type: none"> •23,804 students attending OUSD live in the East region, which makes up 49% of all OUSD students. •About 25% of students living in the East are enrolled in a district charter school. •The region has the highest rates of students who are English Learners (42%) and eligible for free/reduced lunch (85%). •The region has the highest K, 6, and 9 capture rates, all above 90%. •The East region's grade 5 to 6 attrition is the lowest, at 29%, but increased 9 percentage points between 2013 and 2014. •The East region has high levels of grade 8 to 9 attrition, at 28%. However, this rate has been slightly decreasing. •29% of grade 5 students in district-run schools enroll in a district-authorized charter school for 6th grade and 9% enroll in another type of school. About 12% of all grade 8 students in district-run schools enroll in a district-authorized charter school for 9th grade and 16% enroll in another type of school. The East has the highest rate of students transitioning to charter schools.
IV. School Performance	<ul style="list-style-type: none"> •7 of the 50 schools in the East region are “green” (Achieve, TCN, Eres, Greenleaf, Lighthouse, Lionel Wilson) or “blue” schools (Oakland Charter). The modal school in the region is Orange. There are 13 “red” schools. •17% of K-5 students living in the East region attend a “blue” or “green” school, among the lowest rate. •West, Central, and East all have between 1 in 6 and 1 in 5 grade 6-8 students attending a “blue” or “green” school. •Central and East have the highest rate of grade 9-12 students attending a “blue” or “green” school, but is just 1 in 10.
V. School Choice	<ul style="list-style-type: none"> •60% of families living in the East region select a school in the East region as their first choice. 38% select a school in their neighborhood as their first choice. However, these rates greatly decrease in high school. •Life and CCPA are among the district's most in-demand schools in terms of number of 1st choice applications received. Many of the schools receiving the lowest number of applications are in the East, particularly among middle and high school applicants. •Most families living in the East region apply to Acorn Woodland for K, CCPA for grade 6, and Oakland Tech for grade 9. •12% of families living in the East region who apply to kindergarten in OUSD do not enroll in a district-run school. 15% of families who apply to grade 6 in OUSD enroll in a district-authorized charter school; 10% enroll in another type of school. 12% of families who apply to grade 9 in OUSD enroll in a district-authorized charter school; 17% enroll in another type of school. •68% of East families attending a district-run school attend a school in the region. 43% attend the school in their neighborhood attendance area. •Students living in the East region travel an average of 2.1 miles to schools, more than Central and Northwest students. •The average neighborhood school API is 682 (second lowest), but families ultimately attend schools with an average API of 701 thanks to both the choice system and charter schools offering options for higher-API schools.

Regional Summary: Northeast

I. Region & Schools	<ul style="list-style-type: none"> •The Northeast region holds 21 schools, including 5 district-authorized and 1 county-authorized charter schools. •The eastern half of the region is majority African American, and the western half is diverse, with no single ethnic majority.
II. School Environment	<ul style="list-style-type: none"> •Schools in the Northeast region experience low to medium levels of environmental stress compared to other regions. •Schools in the southern part of the Northeast region have higher levels of environmental stress than elsewhere in the region.
III. Demographics & Enrollment	<ul style="list-style-type: none"> •4,983 students attending OUSD live in the Northeast region, which makes up 10% of all OUSD students. •About 16% of students living in the Northeast are enrolled in a district charter school. •The region has among the lowest rates of students who are English Learners (42%) and eligible for free/reduced lunch (62%). •The K capture rate has been increasing in recent years. Other captures resemble district averages and have been fairly stable. •The Northeast region's grade 5 to 6 attrition is the second highest, at 39%, and has been fairly stable. •The Northeast region's grade 8 to 9 attrition is comparable to the district, at 28%, and has been fairly stable. •21% of grade 5 students in district-run schools enroll in a district-authorized charter school for 6th grade and 18% enroll in another type of school. About 5% of all grade 8 students in district-run schools enroll in a district-authorized charter school for 9th grade and 22% enroll in another type of school.
IV. School Performance	<ul style="list-style-type: none"> •3 of the 21 schools in the Northeast region are “blue” (COVA, APIHS, AIPCS). The modal school in the region is Yellow or Orange. There are 2 “red” schools (Bret Harte and MLA). •The Northeast region has the lowest rate of K-5 students enrolled in a “blue” or “green” school, at 1 in 6 students. •A similar share of grade 6-8 students are enrolled in a “blue” or “green” school. •This rate is lower for grade 9-12 students, at 8%.
V. School Choice	<ul style="list-style-type: none"> •37% of families living in the Northeast region select a school in the Northeast region as their first choice, among the lowest rates. 28% select a school in their neighborhood as their first choice, the lowest of any region. •Sequoia and Skyline are among the district's most in-demand schools in terms of number of 1st choice applications received. Parker and Howard, on the other hand, were among the elementary schools that received the lowest number of first-choice applications. •Most families living in the Northeast region apply to Redwood Heights for K, Montera for grade 6, and Oakland Tech for grade 9. •18% of families living in the Northeast region who apply to kindergarten in OUSD do not enroll in a district-run school, the second highest rate. 19% of families who apply to grade 6 in OUSD enroll in a district-authorized charter school; 18% enroll in another type of school. 4% of families who apply to grade 9 in OUSD enroll in a district-authorized charter school; 27% enroll in another type of school, among the highest rates. •44% of Northeast families attending a district-run school attend a school in the region. 33% attend the school in their neighborhood attendance area. •Students living in the Northeast region travel an average of 3.4 miles to schools, more than any other region. •The average neighborhood school API is 700, but families ultimately attend schools with an average API of 751 thanks to both the choice system and charter schools offering options for higher-API schools.

Regional Summary: Northwest

I. Region & Schools	<ul style="list-style-type: none"> •The Northwest region holds 15 schools, all of which are district-run schools. •Most of the region is majority white, although select areas bordering other regions are diverse, with no single ethnic majority.
II. School Environment	<ul style="list-style-type: none"> •Schools in the Northwest region experience very low to medium-low levels of environmental stress –the lowest compared to all other regions.
III. Demographics & Enrollment	<ul style="list-style-type: none"> •4,540 students attending OUSD live in the Northwest region, which makes up 9% of all OUSD students. •About 8% of students living in the Northwest are enrolled in a district charter school, the lowest of all regions. •The region has by far the lowest rates of students who are English Learners (4%) and eligible for free/reduced lunch (20%). •The K, 6, and 9 capture rates are the lowest of all regions and have been stable or slightly decreasing in recent years. •The Northwest region's grade 5 to 6 attrition is by far the highest and has steeply increased in recent years, reaching 54%. •The Northwest region's grade 8 to 9 attrition is by far the highest and has been stable at around 36%. •20% of grade 5 students in district-run schools enroll in a district-authorized charter school for 6th grade and 34% enroll in another type of school. About 1% of all grade 8 students in district-run schools enroll in a district-authorized charter school for 9th grade and 36% enroll in another type of school.
IV. School Performance	<ul style="list-style-type: none"> •2 of the 21 schools in the Northwest region are “green” schools (Peralta, Montclair). There are no “blue” schools, although 6 of the 21 schools have APIs over 900. The modal school in the region is Orange. There are no “red” schools in the region. •The Northwest region has the second highest rate of K-5 students enrolled in a “blue” or “green” school, almost 1 in 4. •However, it has the lowest rates of 6-8 and 9-12 students enrolled in a “blue” or “green” school (6% and 2%, respectively).
V. School Choice	<ul style="list-style-type: none"> •90% of families living in the Northwest region select a school in the Northwest region as their first choice, by far the highest rate. 55% select a school in their neighborhood as their first choice, higher than any region. •Most of the district's most in-demand schools in terms of number of 1st choice applications received are in the Northwest region. Many of these schools have classroom utilization rates near or exceeding capacity. •Most families in the Northwest region apply to Montclair, Chabot, or Crocker for K, Montera for grade 6, and Oakland Tech for 9. •25% of families living in the Northwest region who apply to kindergarten in OUSD do not enroll in a district-run school, the highest rate. 20% of families who apply to grade 6 in OUSD enroll in a district-authorized charter school; 36% enroll in another type of school. 1% of families who apply to grade 9 in OUSD enroll in a district-authorized charter school; 47% enroll in another type of school, among the highest rates. Families not assigned their first choice have very high likelihoods of leaving the district. •81% of Northwest families attending a district-run school attend a school in the region. 68% attend the school in their neighborhood attendance area. These are by far the highest live/go rates of any region. •Students living in the Northwest (and Central) region travel an average of 1.6 miles to schools, less than any other region. •The average neighborhood school API is 806, but families ultimately attend schools with an average API of 841 thanks to the choice system and to a lesser extent, charter schools offering options for higher-API schools.

Regional Summary: West

I. Region & Schools	<ul style="list-style-type: none"> •The West region holds 19 schools, including 7 district-authorized and 1 county-authorized charter schools. •Most of the region is African American, with diverse pockets that have no single ethnic majority.
II. School Environment	<ul style="list-style-type: none"> •Schools in the West region experience medium to very high levels of environmental stress –the highest on average compared to all other regions. Most schools fall under the “most stressed” category.
III. Demographics & Enrollment	<ul style="list-style-type: none"> •5,180 students attending OUSD live in the West region, which makes up 11% of all OUSD students. •About 19% of students living in the West are enrolled in a district charter school, the lowest of all regions. •The region has a moderate rate of English Learners (19%) and a high rate of eligibility for free/reduced lunch (79%). •The K, 6, and 9 capture rates are the second lowest of all regions and have been stable or slightly decreasing in recent years. •The West region's grade 5 to 6 attrition is one of the lowest and has decreased in recent years, reaching 30%. •The West region's grade 8 to 9 attrition is one of the lowest and has been fairly stable at around 22%. •13% of grade 5 students in district-run schools enroll in a district-authorized charter school for 6th grade and 16% enroll in another type of school. About 2% of all grade 8 students in district-run schools enroll in a district-authorized charter school for 9th grade and 21% enroll in another type of school.
IV. School Performance	<ul style="list-style-type: none"> •3 of the 19 schools in the West region are “green” schools (Berkley Maynard, NOCCS) or “blue” (KIPP Bridge). The modal school in the region is red (6 of the 19 schools). •The West region has the second highest rate of K-5 students enrolled in a “blue” or “green” school, almost 1 in 4, but also has the highest rate of K-5 students enrolled in a “red” school (1 in 4). A similar pattern of relative high shares of students in “blue/green” schools (20%) and “red” schools (42%) holds for 6-8 students . Only 5% of students in 9-12 attend a “blue/green” school.
V. School Choice	<ul style="list-style-type: none"> •Families in the West have the highest rates of non-participation in the options and on-time enrollment process. •31% of families living in the West region select a school in the West region as their first choice, the lowest rate. 37% select a school in their neighborhood as their first choice, the second highest rate. •None of the district's most in-demand schools in terms of number of 1st choice applications received are in the West region. However, many of the schools with the least number of 1st choice applications are in this region. •Most families in the West region apply to Peralta for K, Westlake or Claremont for grade 6, and Oakland Tech for grade 9. •15% of families living in the West region who apply to kindergarten in OUSD do not enroll in a district-run school. 18% of families who apply to grade 6 in OUSD enroll in a district-authorized charter school; 13% enroll in another type of school. 2% of families who apply to grade 9 in OUSD enroll in a district-authorized charter school; 23% enroll in another type of school. Kindergarten and grade 6 families not assigned their first choice have relatively higher likelihoods of leaving the district. •51% of West families attending a district-run school attend a school in the region. 44% attend the school in their neighborhood attendance area. •Students living in the West region travel an average of 2.1 miles to schools, second only to the Northeast region. •The average neighborhood school API is 639 (the lowest), but families ultimately attend schools with an average API of 711 thanks to the choice system and charter schools offering options for higher-API schools.

Summary Take-Aways

- Regions requiring attention: West Oakland, East Oakland
- City needs more quality middle and high school options
- Families are willing to travel for choice and quality
- We need a common enrollment system for OUSD district-run and charter schools
- We need common measures of school quality and progress – all schools playing by the same rules
- We need to replicate some of the quality programs that have worked and are attracting more interests in these types of programs

How will the SRA be used?

- 1. Accountable School District Committee-**
As a comprehensive data set for informing recommendations to the Supt.
- 2. Call for Quality Schools Process-** To help our district understand where we need quality schools & where we have quality schools
- 3. Board Policies & Administrative Regs.** To inform the modifications, development, and alignment of Board Policies to meet our Strategic Goals

SRA Community Engagements

January 29th Initial Engagement with School Principals

February 12th- Accountable School District Committee Engagement

February 2015- Scheduling with School Sites & Instructional Leadership Teams SRA Engagements

March 2015- Regional Engagements, Town Halls in the greater community supported by each board member