



OAKLAND UNIFIED  
SCHOOL DISTRICT

Community Schools, Thriving Students

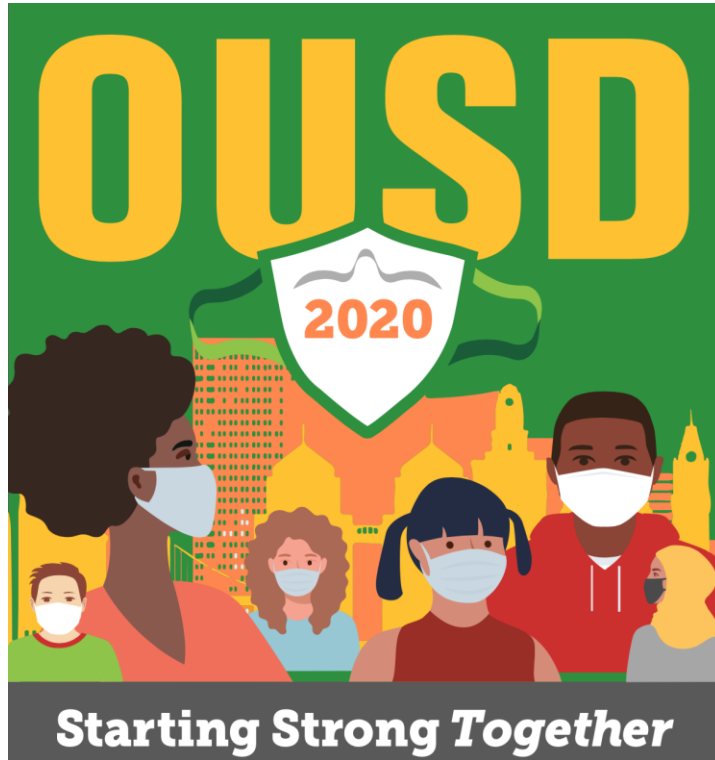
# Superintendent Report



iam OUSD

October 14, 2020

# Superintendent Report Overview



- ❖ Thank you Principals (Shout outs for National Principal Month)
- ❖ Safety Plan Update
- ❖ Appendix: Distance Learning Updates



OAKLAND UNIFIED  
SCHOOL DISTRICT

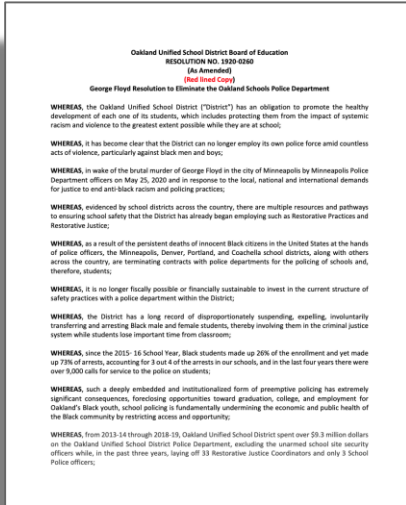
Community Schools, Thriving Students

# Safety Plan Update



# Designing a New District Wide Safety Plan

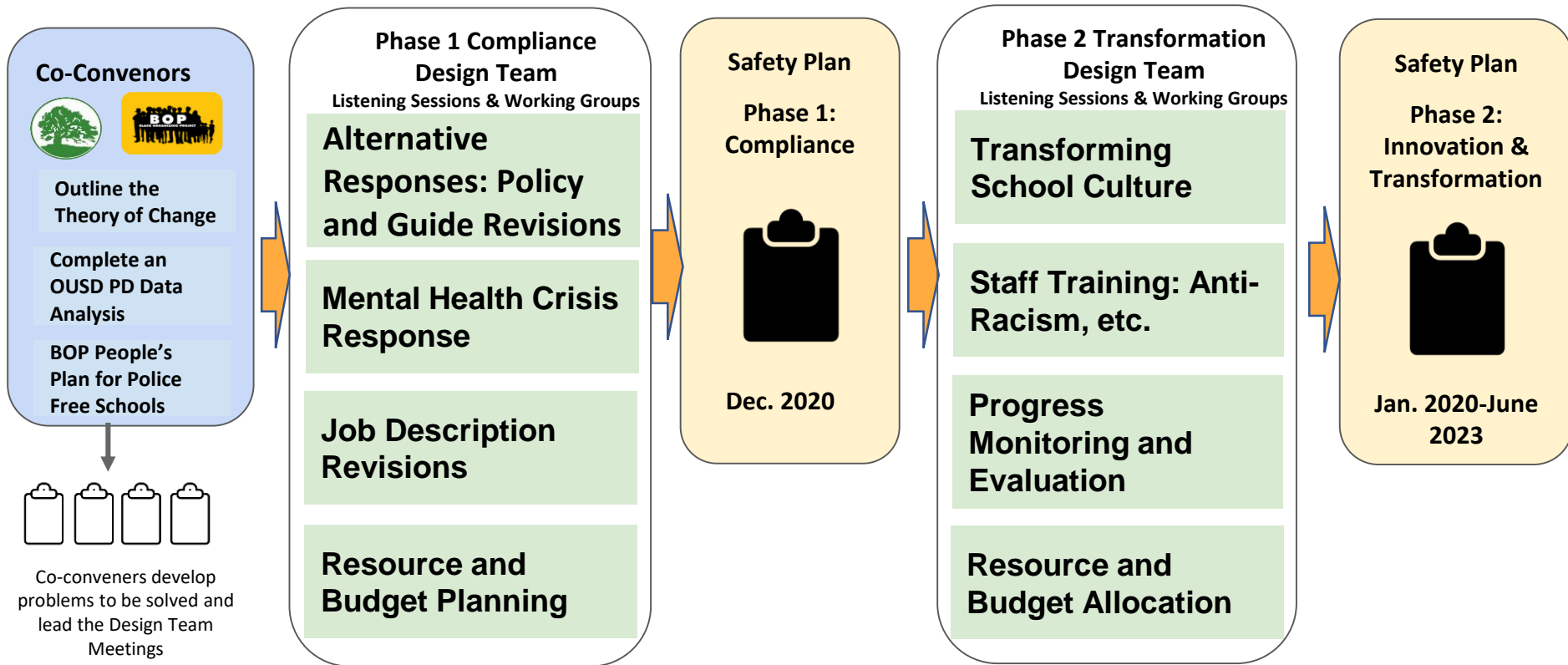
## George Floyd Resolution



Eliminate OUSD school police department and partner with community in reimagining a transformative vision for school safety to create safe, healthy and welcoming school environments and develop a new district-wide safety plan aligned with that vision.



# Planning Process in Two Phases



# Background Analysis to Inform the Design Team

---



## **Policy Review:**

Identify OUSD Policies that currently include police action that will need to be revised



## **Data Review:**

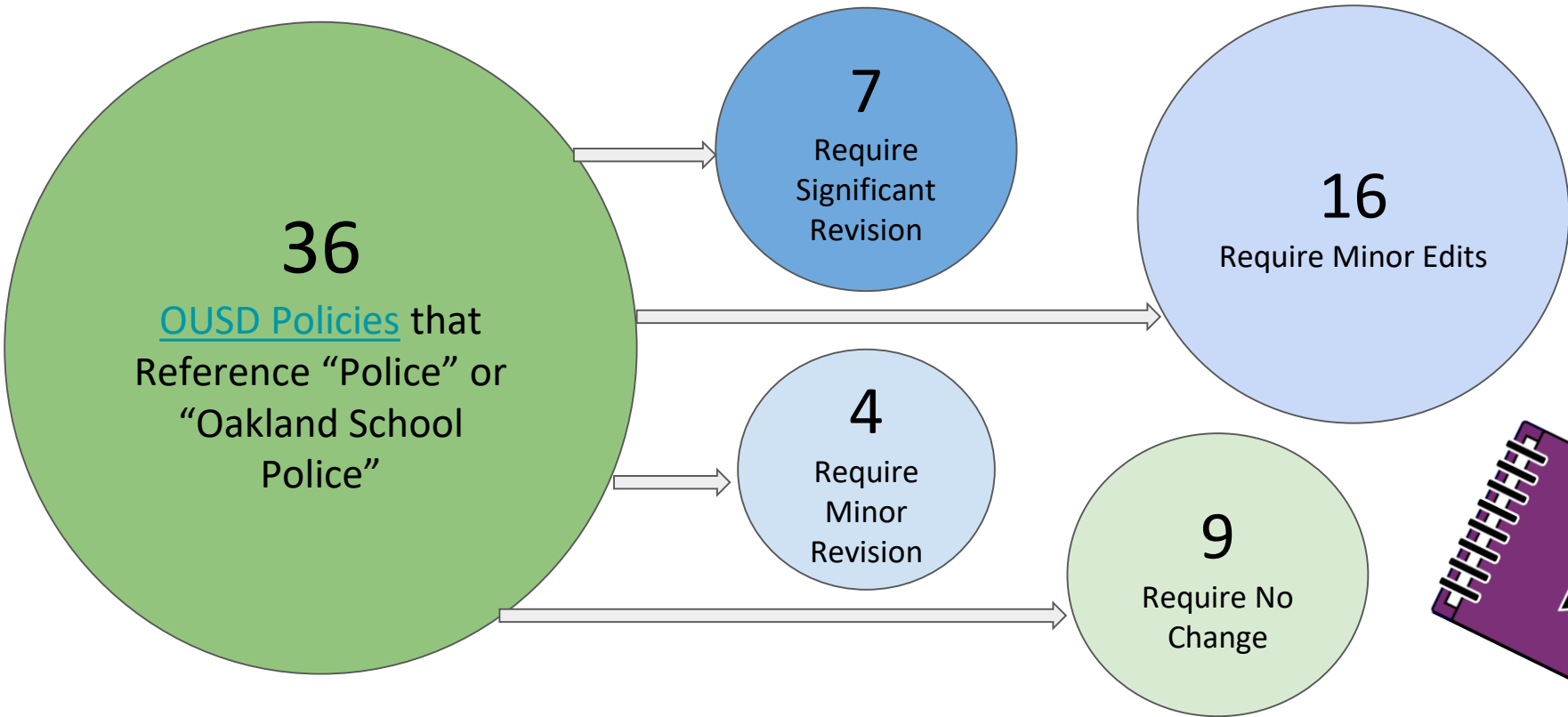
Analyze calls to OUSD Police from Schools sites to identify what alternate protocols are needed



## **Best Practices:**

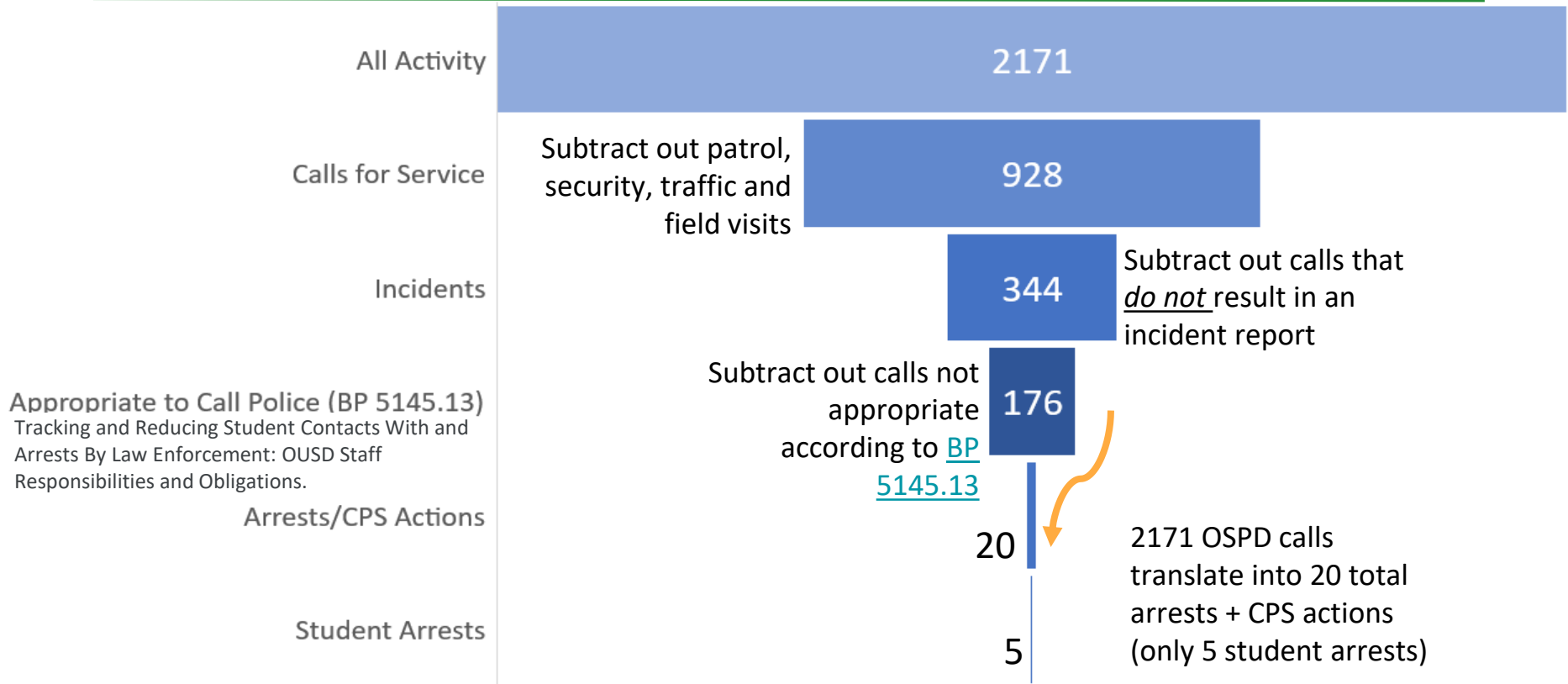
Review BOP People's Plan for Police Free Schools to identify best practices.

# OUSD Policy Review



# Data Review:

## OUSD Police Department Activities for January-December 2019





# Phase 1 Design Team & Working Groups

## Phase 1 Compliance Design Team: Compliance and Innovation

**Community Organizations/Partners focused on alternative responses, youth development and trauma and mental health**

**OUSD Staff:** Chief of Staff, Equity Office, Legal and Labor, Behavioral Health, Attendance & Discipline, Special Education Office, Community Schools Partners, Network Superintendents, Labor Partners

Working Group #1

**Mental Health  
Crisis Response**

Working Group #2

**Job Description  
Revisions:  
Culture and  
Climate Positions**

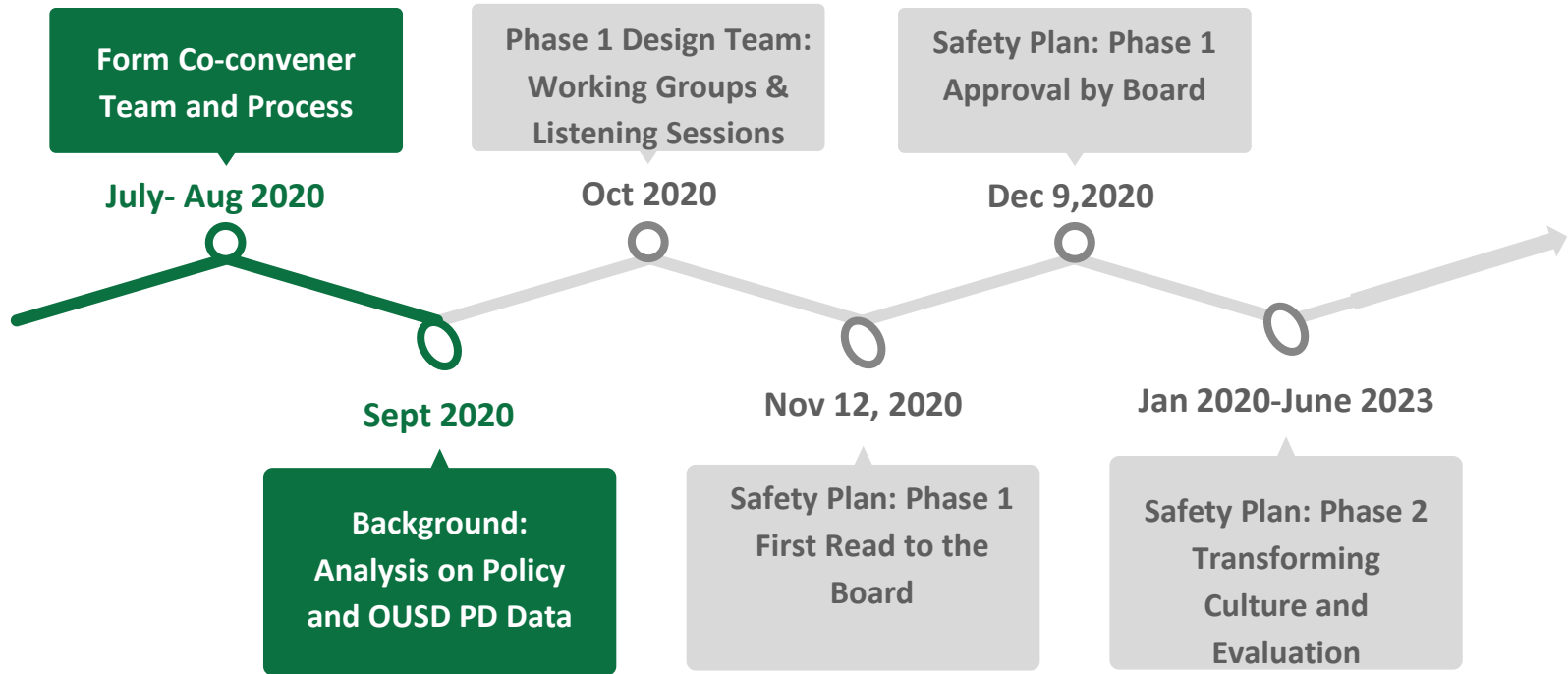
Working Group #3

**Alternative  
Responses:  
Policy and  
Guide Revisions**

Working Group #4

**Resource &  
Budget  
Planning**

# Timeline





# **EVERY STUDENT THRIVES!**



**OAKLAND UNIFIED  
SCHOOL DISTRICT**  
*Community Schools, Thriving Students*

1000 Broadway, Suite 680, Oakland, CA 94607

[www.ousd.org](http://www.ousd.org)



@OUSDnews

# Appendix: Distance Learning Updates



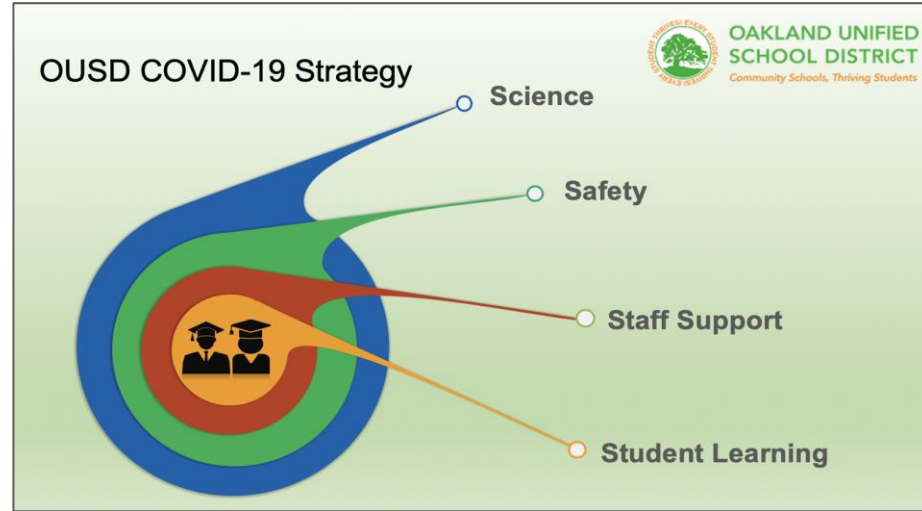
- ❖ Enrollment & Attendance Updates
- ❖ Family Learning Supports
  - Technology
  - Meal Distribution
  - Learning Hubs

# Mission

Oakland Unified School District (OUSD) will build a Full-Service Community District focused on high academic achievement while serving the whole child, eliminating inequity, and providing each child with excellent teachers, every day.

# Vision

All OUSD students will find joy in their academic experience while graduating with the skills to ensure they are caring, competent, fully-informed, critical thinkers who are prepared for college, career, and community success.



# Enrollment & Attendance Updates

# Enrollment update

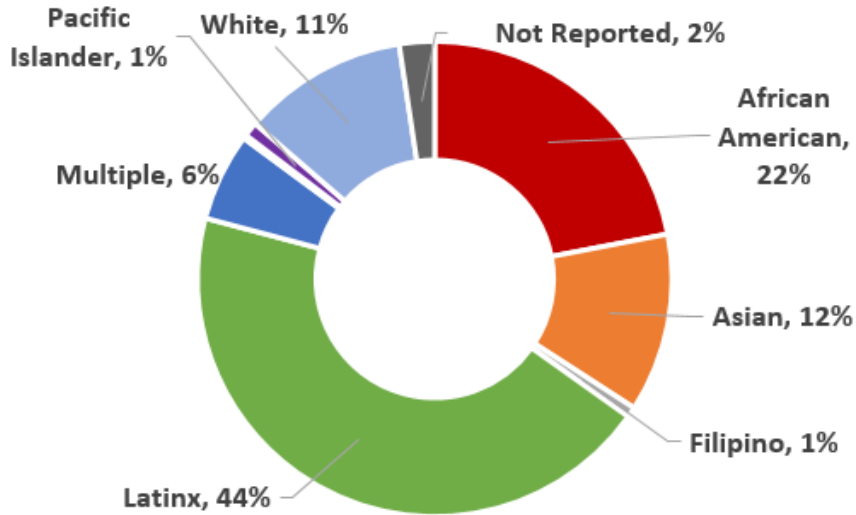
Grade	Oct 6 2020	Projection	Diff from Projection
K	2,697	3,047	-350
6	2,236	2,132	+104
9	2,150	2,362	-212
<b>All Grades*</b>	<b>35,315</b>	<b>35,731</b>	<b>-416</b>

*\*The “All Grades” numbers above include general education and special education students but exclude students in non-public schools, home/hospital settings, and special ed young adult programs because the District does not project for those groups. The enrollment and projections numbers for K, 6, and 9 exclude special education students classified as Special Day Class (SDC) because the District does not project SDC students by grade.*

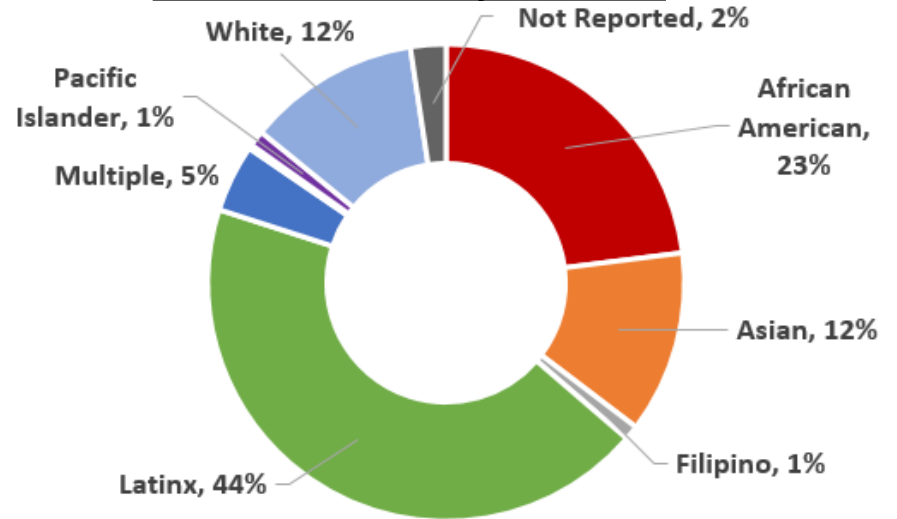
# Demographic Comparison

- The disaggregation by ethnicity this year is nearly identical to last year (see below).
- Special Education: 14%\* this year, compared to 15% last year.

**Current Year Ethnicity Breakout**



**Prior Year Ethnicity Breakout**



*\*The 14% for this year does not include students who have not yet had their initial IEP evaluation for services. The rate in both cases only includes students enrolled in district-run schools, not SELPA-wide.*



# Preliminary attendance results\* (Aug 10-Oct 6)

Grade level	All Students	ELL	New-comer	SPED	Unhoused	Foster Youth	African American	Latino	Asian	White
<b>TK-5</b> (avg enrollment)	95% (18360)	94% (5877)	92% (1430)	92% (2421)	82% (183)	92% (43)	91% (3615)	94% (7714)	97% (2363)	98% (2470)
<b>6-8</b> (avg enrollment)	95% (6874)	93% (1874)	92% (405)	92% (1194)	86% (89)	90% (38)	91% (1535)	95% (3291)	97% (696)	99% (698)
<b>9-12</b> (avg enrollment)	88% (9384)	82% (2588)	78% (1087)	85% (1490)	74% (468)	77% (87)	86% (2411)	86% (4273)	96% (1203)	96% (781)

\* MetWest and Sojourner Truth NOT included.

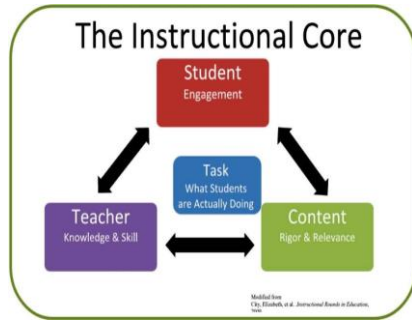
# Family Learning Supports

- Technology
- Meal Distribution
- Learning Hubs

# Staff Devices Improving Quality of Distance Learning

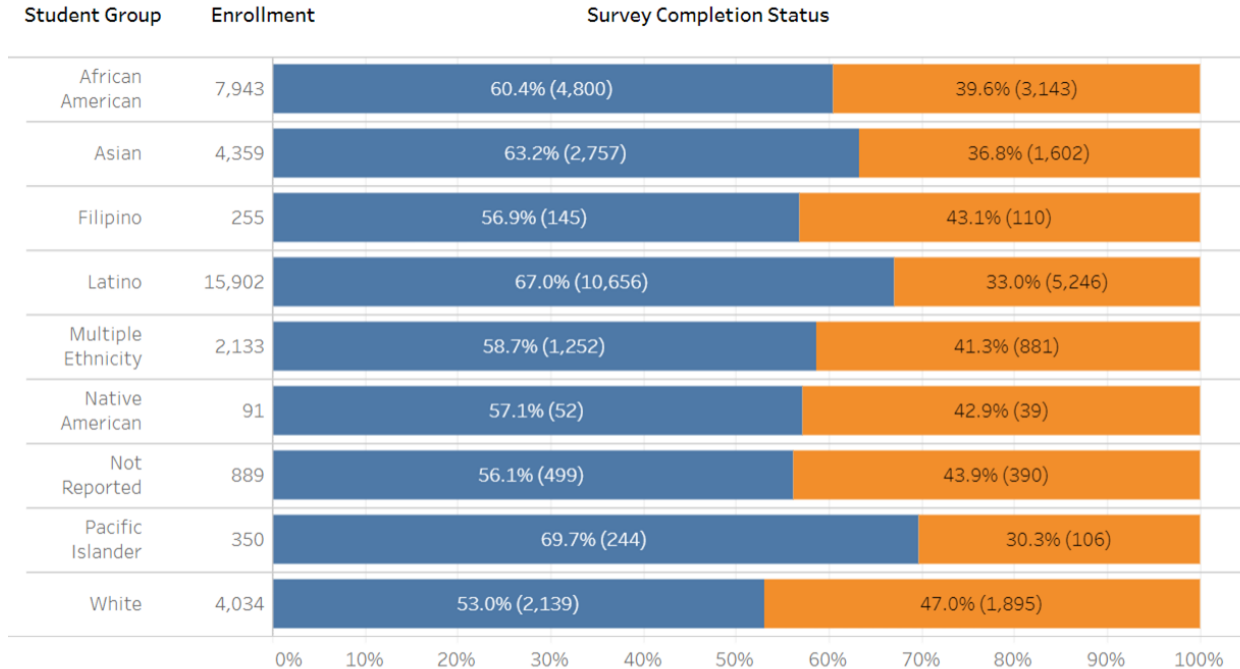
## Surface 3 Laptop (PC device)

- More robust processor that allows for fuller use of Zoom platform and other learning software.
- Touch Screen allows differentiation for diverse learners
- Aligns with current support infrastructure and staffing
- Aligns with our CTE program needs in high school
- SPED Devices are different based on need for CD/DVD drive



Classroom Instruction	Direct Student Supports
Teachers (OEA) <ul style="list-style-type: none"><li>• Paraeducators</li><li>• Instructional Support Specialists</li><li>• Instructional Assistants</li></ul>	Counselors Speech Language Pathologists (MOU) Psychologists (MOU) Social workers (MOU)

# Disaggregated Data-Technology Survey



The Tech Check Survey is the **largest mapping of the digital divide** in Oakland.

**OUSD is providing ALL Students OUSD Loaner Chromebooks and Hotspots to all students**

Oakland has **22,544 students** in Oakland have completed the survey.

**Elementary is completing the survey at the highest rate** as families are much more likely to complete survey.

# Supporting Families to Gain Access



## Castlemont High School-Update

### Distribution Date:

- Thursday, 2:30 at Castlemont

### Critical Steps:

- Deep outreach to families to get all students that have not completed the survey
- Pick up at the site of students that have qualified for devices.
- Goal is to support newcomers and Mam speaking families to get access to technology and improve the quality of the online connection.

### Additional Supports and Outreach:

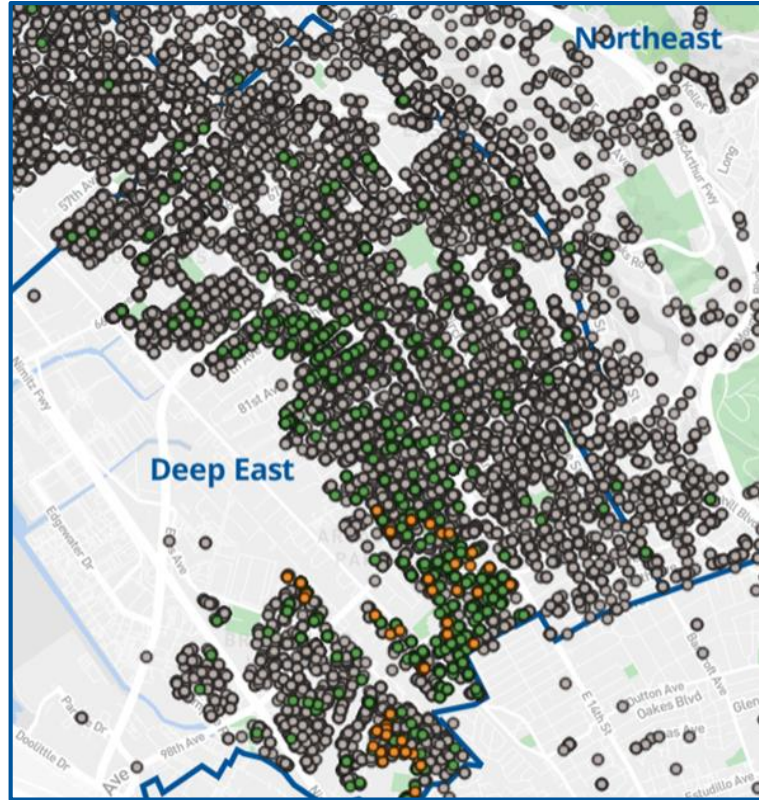
- 1) Mam speaking staff to support communication with families through phone calls.
- 2) Home visits for families that they cannot connect with but have an address.

# Home Delivery Pilot

District Wide Launch October 26th

Food Delivery Status	
Enrolled	579
Declined delivery	60
Not contacted	9,207
<b>TOTAL</b>	<b>9,845</b>

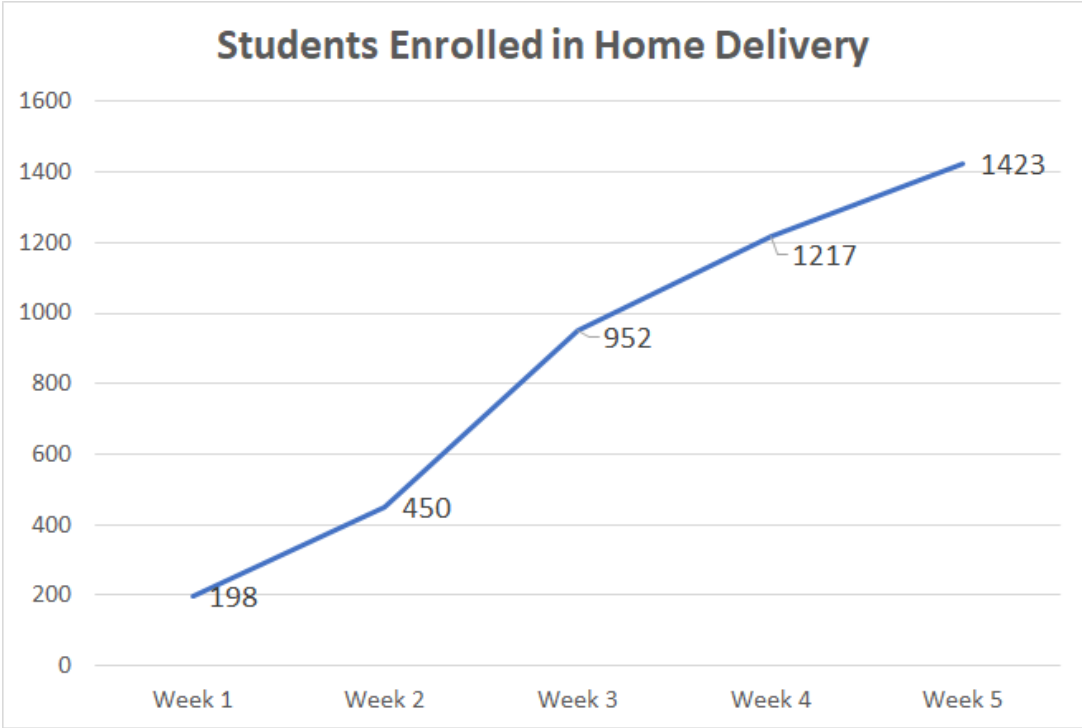
# Home Delivery-East Oakland Pilot



# Selected Students: 9,845

- |                 |                 |
|-----------------|-----------------|
| ACORN Woodla..  | Futures         |
| Allendale       | Garfield        |
| Bella Vista     | Gateway         |
| Bret Harte      | Glenview        |
| Bridges         | Global Family   |
| Brookfield      | Grass Valley    |
| Bunche          | Greenleaf       |
| Burckhalter     | H&H             |
| Carl Munck      | Hillcrest       |
| Castlemont      | Hoover          |
| CCPA            | Horace Mann     |
| Chabot          | Howard          |
| Claremont       | ICS             |
| Cleveland       | Joaquin Miller  |
| Community Day   | Korematsu       |
| Community Uni.. | La Escuelita    |
| Crocker         | Laurel          |
| Dewey           | Life            |
| Edna Brewer     | Lincoln         |
| Elmhurst        | Madison Prima.. |
| Emerson         | Madison Upper   |
| EnCompass       | Manzanita       |
| Esperanza       | Markham         |
| Franklin        | McClymonds      |
| Fremont         | MetWest         |
| Frick           | MLA             |
| Fruitvale       | MLK             |

# Student Enrollment in Home Delivery Pilot



**Weeks 1 & 2:** Serving 2 school with volunteer drivers from OUSD staff

**Weeks 3-4:** Serving 6 schools with bilingual drivers from “Growing Together”

**Week 5:** Serving students living East of 73rd Ave

**On Friday Oct 3, OUSD delivered 27,037 meals to 1,423 students.**



# “Growing Together” Driver-Mario Mendoza

---



**Mario Mendoza** is a part of the team of parents who provide home delivery service of food to families, and he also does administration and customer service.

“My sons have lived in Oakland since they were born. One of them attended both Harriet Tubman Pre-School and **Hoover Elementary School**. He's now on his last year of high school and is college bound. In name of all our community, we thank you for all the help you've provided through these unprecedented times. I can go on and on to tell the impact in our lives. I can only say THANK YOU”

# Learning hubs and other learning supports

---

## Learning Hubs

City of Oakland/OUSD/CBO partnerships to provide full day academic and enrichment support program at three initial City Park and Rec sites (DeFremery, Carmen Flores, Jinkins, Peralta Hacienda; Spanish Speaking Citizens Foundation in planning)

## Pods

Partnerships with community organizations to provide homework and enrichment programs (e.g., Oakland Housing Authority-virtual, other partnerships and sites in planning)

## Virtual Tutoring

Partnership with Oakland Ed Fund. Volunteers matched with teachers (classroom Zoom Assistants) and with individual students (tutoring). 60 volunteers matched with nearly 240 more in process.



# OUSD Family Central



## Home Learning

Get help with virtual classroom tools



## Chromebooks

Get started with Chromebooks



## Internet

Free internet access



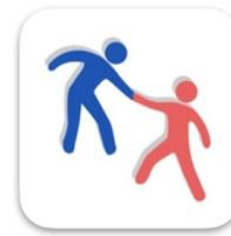
## Food

Free meals and groceries



## Health

How to access healthcare and COVID-



## Assistance

Financial, legal, and immigration help