


Board Office Use: Legislative File Info.	
File ID Number	12-2444
Committee	Facilities
Introduction Date	10-10-2012
Enactment Number	12-2532
Enactment Date	10/10/12 OA



OAKLAND UNIFIED  
SCHOOL DISTRICT

Memo

To Board of Education 

From Tony Smith, Ed.D., Superintendent  
Timothy White, Associate Superintendent, Facilities Planning and Management

Board Meeting Date October 10, 2012

Subject Division of Facilities Planning and Management P.O's. Less than \$50,000.00

Action Requested: Ratification by the Board of Education of the attached contracts for the Division of Facilities Planning and Management.

	Name	Amount	Funding Source	P.O.	Project	Date	City
12-2426	A&E Emaar	\$24,086.00	Measure B	P.O.	Piedmont Portable Installation	8-9-2012 thru 9-15-2012	Albany, CA
12-2430	Amber Flooring	\$1,698.00	Deferred Maintenance	P.O.	Piedmont Portable Installation	7-2-2012 thru 12-31-2012	Oakland
12-2465	Amber Flooring	\$39,191.00	Deferred Maintenance	P.O.	Piedmont Painting and Flooring	7-2-2012 thru 12-31-2012	Oakland
12-2431	Bridges Consultant	\$26,000.00	Measure B	P.O.	Facilities	7-1-2012 thru 9-30-2012	Oakland
12-2435	C. Overaa Company	\$29,000.00	Measure B	P.O.	Washington ES Mod	6-1-2012 thru 12-31-2012	Richmond, CA
12-2434	C. Overaa Company	\$49,000.00	Measure B	P.O.	La Escuelita Educational Center	3-7-2012 thru 6-30-2012	Richmond, CA
12-2432	CDW Government	\$468.00	Measure B	P.O.	Jefferson New Building	5-8-2012 thru 12-31-2012	Chicago, IL
12-2433	Chussy International	\$729	Measure A	P.O.	Facilities	5-10-2012 thru 5-18-2012	Oakland, CA
12-2436	Corevera	\$9,000.00	Developer Fees	P.O.	La Escuelita Educational Center	6-1-2012 thru 12-31-2012	San Francisco, CA
12-2437	Elation Systems	\$35,600.00	Measure B	P.O.	Labor Compliance	7-1-2012 thru 6-30-2013	Pleasanton, CA
12-2438	Eric Young	\$5,000.00	Measure A	P.O.	Facilities	7-1-12 thru 6-30-2013	Oakland, CA
12-2439	Gary Doupnik Manufacturing	\$54,600.00	Measure B	P.O.	Lowell Mod	6-27-2012 thru 7-1-2013	Loomis, CA



# OAKLAND UNIFIED SCHOOL DISTRICT

12-2440	HALO Branded Solutions, Inc.	\$3,500.00	Measure A	P.O.	OUSD Summer Intern Program	7-25-2012 thru 12-31-2012	Sterling, IL
12-2442	IKON Office Solution, Inc.	\$4,000.00	Measure A	P.O.	Facilities	7-1-2012 thru 6-30-2013	Pasadena, CA
12-2443	Infiniti Engineering	\$25,425.22	Measure B	P.O.	Piedmont Portable Installation	7-20-2012 thru 8-31-2012	Oakland, CA
12-2441	Integrity Furniture	\$10,390.00	Special Reserve	P.O.	Thornhill ES	7-10-2012 thru 1-10-2013	Longview, TX
12-2444	KI	\$13,672.66	Measure B	P.O.	Highland New Classroom Building	7-15-2012 thru 9-15-2012	Green Bay, WI
12-2446	Lee Sign	\$417.86	Measure B	P.O.	Highland New Classroom Building	6-1-2012 thru 9-1-2012	Oakland, CA
12-2445	Lee Signs	\$139.20	Measure B	P.O.	Oakland HS	7-23-2012 thru 12-31-2012	Oakland, CA
12-2447	Magdave Associates, Inc.	\$49,900.00	Measure B	P.O.	Estimating Services	7-1-2012 thru 12-31-2012	Oakland, CA
12-2448	Masterpiece Painting	\$49,470.00	Deferred Maintenance	P.O.	Piedmont Portable Installation	7-2-2012 thru 12-31-2012	Oakland, CA
12-2449	Playworks	\$28,000.00	Developer Fees	P.O.	La Escuelita Educational Center	8-27-2012 thru 6-30-2013	Oakland, CA
12-2450	RMT Landscape Contractors, Inc.	\$4,800.00	Measure B	P.O.	Arroyo Viejo CDC Renovation	4-23-2012 thru 12-31-2013	San Leandro, CA
12-2451	RRM Design Group	\$25,000.00	Measure B	P.O.	Hintil KUU CDC Building Replacement	4-13-2012 thru 8-13-2012	San Luis Obispo, CA
12-2452	Seville Group Inc.	\$49,900.00	Developer Fees	P.O.	Facilities	7-1-2012 thru 12-31-2012	Oakland, CA
12-2454	Swinerton Builders	\$10,000.00	County School Facilities Fund	P.O.	Oakland Tech	4-25-12 thru 6-1-2012	San Francisco
12-2453	Swinerton Builders	\$20,262.00	County School Facilities Fund	P.O.	King Estates MS Seismic Retrofit	1-27-2012 thru 12-31-2012	San Francisco
12-2455	Swinerton Builders	\$10,000.00	County School Facilities Fund	P.O.	Montera Seismic Retrofit	4-26-12 thru 6-1-2012	San Francisco
12-2456	Turner Construction	\$49,000.00	County School Facilities Fund	P.O.	La Escuelita Educational Center	3-7-2012 thru 6-30-2012	Oakland, CA
12-2457	Xerox Capital Services	\$6,300.00	Measure A	P.O.	Facilities	7-1-2012 thru 6-30-2013	Dallas, TX

## Discussion:

Among the key purposes of the District's Facilities Master Plan is to provide an academic environment for the Oakland community that will give every student, educator, and community member using our facilities the best possible opportunity for learning.



OAKLAND UNIFIED  
SCHOOL DISTRICT

Through implementation of the Facilities Master Plan, the District intends to improve the District's facilities in terms of structural integrity, safety, reliability of operating (mechanical) systems, access to modern resources, number and type of appropriate laboratories and specialized instruction rooms, opportunities for physical education, and attractiveness, such that the Oakland Public Schools are second to none. Operation of the District schools under the planned approach is intended to ensure safety, cleanliness, and orderliness for all individuals participating in the learning process.

The basic facility needs of students such as proper lighting, functional roofs, noise control and well maintained buildings, not only convey the message that we value our students and teachers but may foster a sense of school pride and community ownership which may improve attitudes towards learning. The implementation of the Facilities Master Plan is our first step in that direction.

**Fiscal Impact:**

Various

**Recommendation:**

The Board of Education is requested to approve the Facilities Planning and Management contracts and Purchase Order for the OUSD school sites.

**OAKLAND UNIFIED SCHOOL DISTRICT**  
**Department of Facilities Planning and Management**  
**AGREEMENT REQUEST FORM**


RECEIVED 7/10/12

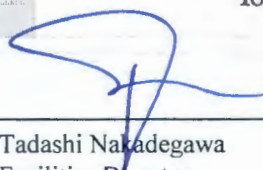
**DATE SUBMITTED:** 6/15/2012  
**SUBMITTED BY:** Eric Sih

**SECTION I. TYPE OF AGREEMENT (PLEASE CHECK ONE BOX)**

1.) A/E (Architect and Engineers) Contract <input type="checkbox"/>	5.) "Small" (under \$15,000.00) Construction Contract <input type="checkbox"/>
2.) IOR (Inspector of Record Contract) <input type="checkbox"/>	6.) Resolution Awarding Bid and Construction Contract <input type="checkbox"/>
3.) Agreement for Professional Services - Testing Etc. <input type="checkbox"/>	7.) Change Order <input type="checkbox"/>
4.) Amendment to Agreement for Professional Services <input type="checkbox"/>	8.) Purchase Order <input checked="" type="checkbox"/>

Vendor Number: \_\_\_\_\_  
 Fiscal Year: 2012-2013  
 P.O. Under \$50K:   
 Date Processed: 7-13-2012  
 To: MB 70 To DR: \_\_\_\_\_

  
 Timothy E. White  
 Asst. Superintendent

  
 Tadashi Nakadegawa  
 Facilities Director

Date: 6/25/12

**SECTION II. LOCAL BUSINESS PARTICIPATION PERCENTAGE**

Local Business	Small Local Business	Small Local Resident Business	Total Percentage
0.00%	0.00%	0.00%	0.00%

**SECTION III. AGREEMENT INFORMATION:**

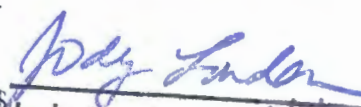
Project Name:	Highland New Classroom Building	Project No:	06009 <u>1269901830</u>
Vendor Name:	KI	Vendor Contact:	Denise Kropp-Schroeder/Jessica Geli
Vendor Phone Number:	(920) 406-3312	Vendor Mailing Address:	1330 Bellevue Street, Green Bay, WI 54302
Agreement Start and Stop Dates:	Start: 7/15/2012 Stop: 9/15/2012	Amounts:	Current Contract Amount: \$0.00 Not to Exceed Amount: \$13,672.66 Revised Contract Amount: \$0.00
Has Work Started?	<input type="checkbox"/> Yes <input checked="" type="checkbox"/> No <i>If yes give an explanation:</i>	Has Work Been Completed?	<input type="checkbox"/> Yes <input checked="" type="checkbox"/> No Date: _____

**RECEIVED**  
7-13-2012

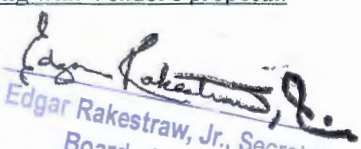
Certificate of Insurance Attached  Yes  No Date provided: \_\_\_\_\_

**For Construction Contracts >\$15,000, please provide or attach the following:**

- 1) Number of Bids Received, List of Bidders and Amounts (Bid Form) *(Attach Bid Documents)*
  - 2) Date(s) of Bid Advertisement -
  - 3) Date of Bid Opening -
  - 4) Name of Architect -
  - 5) Liquidated damages per day - \$
  - 6) Performance Bonds Attached
  - 7) Payment Bonds Attached
- (Sections 6 and 7 to be completed by Contract Administration department)

  
 Jody London  
 President, Board of Education

**Scope of Work:** *(Needed to prepare Executive Summary)* Please attach separately along with Vendor's proposal.  
 Furnish new reception desk for Highland RISE Community School Administration Office.

  
 Edgar Rakestraw, Jr., Secretary  
 Board of Education

**Discussion Info:** *(Needed to prepare Executive Summary)* and what is the benefit to students - Add additional pages as needed.  
 Drawing Sheet 2A2.3 shows reception desk is provided by OUSD.  
 Construction Date: October 10, 2012

Document No. 12-2532  
 Date: 10/10/12  
 Funding Source: 08

BUDGETING DEPARTMENT

Budget Number: \_\_\_\_\_

OUSD or the District verifies that the Contractor does not appear on the Excluded Parties List at [www.epls.gov/epls/search.do](http://www.epls.gov/epls/search.do).

**OAKLAND UNIFIED SCHOOL DISTRICT**  
**Department of Facilities Planning and Management**  
**AGREEMENT REQUEST FORM**

**SECTION IV. L/LS/LSRBE - RATIONAL FOR NON COMPLIANCE CHECK LIST**

1.)	<p><b>Specialty Service:</b> This contractor provides a unique / specialty service that is currently not available from a certified L/S/SLRBE. Government Code § 53060 / school districts may contract without bidding for, "special services and advice in financial, economic, accounting, . . . legal, or administrative matters if such persons are specially trained and experienced and competent to perform the special services required."</p>	✓
2.)	<p><b>District Discretion</b> under L/SL/SLRBE due to lack of certified firms at time of bid: If at least three L/SL/SLRBEs are not certified, then the requirement may, subject to the discretion of the District, be waived, or the 20% requirement may be re-set from 19 % to 0%, depending on the particular circumstances at time of bid.</p>	
3.)	<p><b>Futility:</b> It would be futile to require that the contract be subjected to the L/SL/SLRBE due to (circle one) COST / TIME CONSTRAINTS / NO CERTIFIED BIDDERS. California law provides that "[w]here competitive proposals work an incongruity and are unavailing as affecting the final result or where they do not produce any advantage...the statute requiring competitive bidding does not apply." (Hiller v. City of Los Angeles (1961) 197 Cal. App. 2d 685, 694.)</p>	
4.)	<p><b>Field Test</b> / (1) In order that a field test or experiment may be made to determine the product's suitability for future use. PUBLIC CONTRACT CODE SECTION 3400-3410</p>	
5.)	<p><b>Product Match</b>/(2) In order to match other products in use on a particular public improvement either completed or in the course of completion. PUBLIC CONTRACT CODE SECTION 3400-3410</p>	
6.)	<p><b>Sole Source</b> / (3) In order to obtain a necessary item that is only available from one source. PUBLIC CONTRACT CODE SECTION 3400-3410</p>	
7.)	<p><b>Emergency Repair</b> / (4) (A) In order to respond to an emergency declared by a local agency, but only if the declaration is approved by a four-fifths vote of the governing board of the local agency issuing the invitation for bid or request for proposals. PUBLIC CONTRACT CODE SECTION 3400-3410 / See also: Public Contract Code Section 1102. "Emergency," as used in this code, means a sudden, unexpected occurrence that poses a clear and imminent danger, requiring immediate action to prevent or mitigate the loss or impairment of life, health, property, or essential public services.</p>	

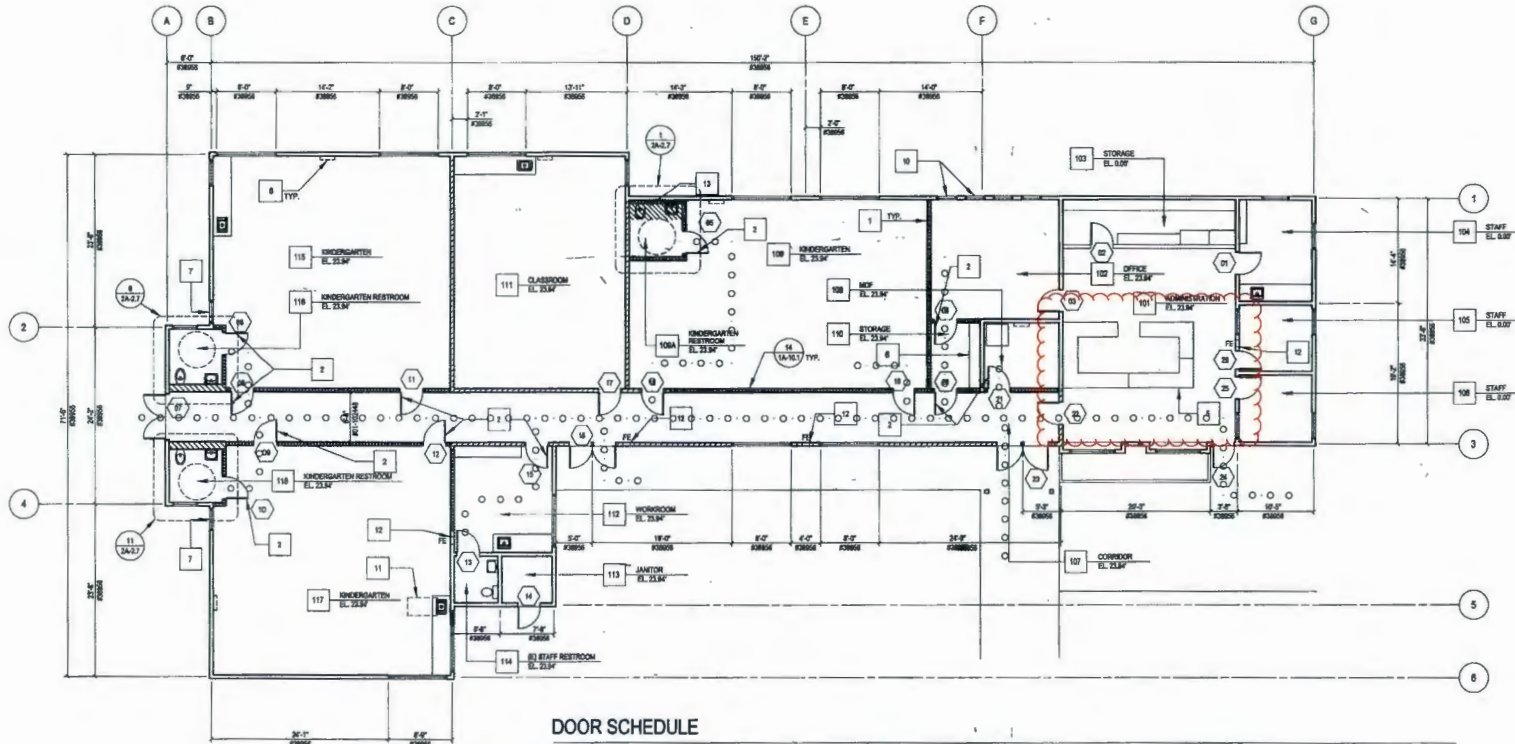


**KEY NOTES**

- 1 WALLS/PARTITIONS
- 2 DOORS & FRAMES
- 3 FIXTURES & PLUMBING
- 4 FINISHES ON GRADE
- 5 BUILT-IN COUNTER/DESK BY QUAD
- 6 CABINETS/SHELVING BY QUAD
- 7 WINDOWS IN REYDOWNS
- 8 OMITTED
- 9 OMITTED
- 10 WINDOWS TO MATCH EXISTING @ 5'-0" O.C. AFF
- 11 30" X 48" ACCESSIBLE AREA
- 12 (E) FIRE EXTINGUISHER TO REMAIN
- 13 PATCH BACK CONCRETE TO MATCH ADJACENT DOWEL DETAIL.

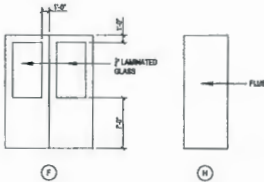
**LEGEND**

- 2 X 6 WALL - 1 HR RATED
- 2 X 12 WALL - 1 HR RATED
- (E) 2 X 8 WALL
- (E) 2 X 4 WALL - 1 HR RATED
- FULL HT. TO BOTTOM OF ROOF STRUCTURE
- ACCESSIBLE PATH OF TRAVEL



**1 FLOOR PLAN**  
1/8" = 1'-0"

- NOTES
- 1 DSA #3856 ORIGINAL BUILDING DRAWINGS
  - 2 DSA #61-10248 BUILDING RENOVATION DIMENSIONS W/ CORRESPONDING DSA NUMBER INDICATE THE DIMENSION PROVIDED IN THAT SET.
  - 3 ALL FINISHES DEMOLISHED OR DAMAGED IN COMPLETING THE WORK SHALL BE REPAIRED OR REPLACED TO MATCH ADJACENT CONSTRUCTION.
  - 4 ALL DOOR OPENINGS, ON 1 HOUR FIRE RATED CORRIDOR PARTITIONS, TO BE PROTECTED BY RATED ASSEMBLIES (CBC 715.4, TABLE 715.4)



**2 DOOR TYPES**  
1/8" = 1'-0"

**DOOR SCHEDULE NOTES**

- 1 PROVIDE HOLD OPENS @ ALL EXTERIOR DOORS.
- 2 PROVIDE CLOSERS & STOPS @ ALL DOORS.
- 3 PROVIDE DEAD BOLT @ STUDENT RESTROOM DOORS W/ SWITCH ON INTERIOR SIDE. PROVIDE LABEL INDICATING THAT DOOR IS TO REMAIN OPEN WHEN BUILDING IS OCCUPIED.
- 4 FOR HARDWARE GROUP, SEE SPEC SECTION 08710

**DOOR SCHEDULE**

NO.	DOOR				FRAME		DETAIL				RATING	NOTES	
	TYPE	MATERIAL	WIDTH	HEIGHT	THICK	TYPE	MATERIAL	HEAD	JAMB	SELL			HARDWARE
01	(E)	WD	3'-0"	8'-8"	1 3/4"	WD	WD	-	-	-	01	20 MIN	EXISTING DOOR TO REMAIN
02	(E)	WD	3'-0"	8'-8"	1 3/4"	4	WD	-	-	-	01	20 MIN	EXISTING DOOR TO REMAIN
03	(E)	WD	3'-0"	8'-8"	1 3/4"	4	WD	-	-	-	01	20 MIN	EXISTING DOOR TO REMAIN
04	H	MT	3'-0"	8'-8"	1 3/4"	4	MT	12/1A-12.1	13/1A-12.1	14/1A-12.1	01	20 MIN	INT. - SEE 20A-12.1 FOR FIXED GLAZING.
05	H	MT	3'-0"	8'-8"	1 3/4"	2	MT	12/1A-12.1	13/1A-12.1	14/1A-12.1	05	20 MIN	INT. - SEE 20A-12.1 FOR FIXED GLAZING.
06	H	MT	3'-0"	8'-8"	1 3/4"	2	MT	12/1A-12.1	13/1A-12.1	14/1A-12.1	05	20 MIN	INT. - SEE 20A-12.1 FOR FIXED GLAZING.
07	F	MT	8'-0"	8'-8"	1 3/4"	1	MT	12/1A-12.1	13/1A-12.1	14/1A-12.1	03	20 MIN	INT. - SEE 20A-12.1 FOR FIXED GLAZING.
08	H	MT	3'-0"	8'-8"	1 3/4"	4	MT	12/1A-12.1	13/1A-12.1	14/1A-12.1	02	20 MIN	INT. - SEE 20A-12.1 FOR FIXED GLAZING.
09	H	MT	3'-0"	8'-8"	1 3/4"	4	MT	12/1A-12.1	13/1A-12.1	14/1A-12.1	02	20 MIN	INT. - SEE 20A-12.1 FOR FIXED GLAZING.
10	H	MT	3'-0"	8'-8"	1 3/4"	2	MT	12/1A-12.1	13/1A-12.1	14/1A-12.1	05	20 MIN	INT. - SEE 20A-12.1 FOR FIXED GLAZING.
11	H	MT	3'-0"	8'-8"	1 3/4"	4	MT	12/1A-12.1	13/1A-12.1	14/1A-12.1	02	20 MIN	INT. - SEE 20A-12.1 FOR FIXED GLAZING.
12	H	MT	3'-0"	8'-8"	1 3/4"	4	MT	12/1A-12.1	13/1A-12.1	14/1A-12.1	02	20 MIN	INT. - SEE 20A-12.1 FOR FIXED GLAZING. W/PANIC
13	(E)	WD	3'-0"	8'-8"	1 3/4"	4	WD	-	-	-	05	20 MIN	EXISTING DOOR TO REMAIN
14	(E)	MT	3'-0"	8'-8"	1 3/4"	4	WD	-	-	-	01	20 MIN	EXISTING DOOR TO REMAIN
15	(E)	WD	3'-0"	8'-8"	1 3/4"	4	MT	12/1A-12.1	13/1A-12.1	14/1A-12.1	02	20 MIN	EXISTING DOOR TO REMAIN
16	(E)	MT	PR 3'-4"	8'-8"	1 3/4"	4	WD	-	-	-	03	20 MIN	EXISTING PAIR DOORS TO REMAIN
17	(E)	WD	3'-0"	8'-8"	1 3/4"	4	WD	-	-	-	02	20 MIN	EXISTING DOOR TO REMAIN
18	H	MT	3'-0"	8'-8"	1 3/4"	4	MT	12/1A-12.1	13/1A-12.1	14/1A-12.1	02	20 MIN	INT. - SEE 20A-12.1 FOR FIXED GLAZING.
19	H	MT	3'-0"	8'-8"	1 3/4"	4	MT	12/1A-12.1	13/1A-12.1	14/1A-12.1	02	20 MIN	INT. - SEE 20A-12.1 FOR FIXED GLAZING. W/PANIC
20	H	MT	3'-0"	8'-8"	1 3/4"	4	MT	12/1A-12.1	13/1A-12.1	14/1A-12.1	01	20 MIN	INT. - SEE 20A-12.1 FOR FIXED GLAZING.
21	H	MT	3'-0"	8'-8"	1 3/4"	4	MT	12/1A-12.1	13/1A-12.1	14/1A-12.1	01	20 MIN	INT. - SEE 20A-12.1 FOR FIXED GLAZING.
22	(E)	WD	3'-0"	8'-8"	1 3/4"	4	WD	-	-	-	02	20 MIN	EXISTING DOOR TO REMAIN - 3/4 HOUR W/PANIC
23	(E)	MT	PR 3'-4"	8'-8"	1 3/4"	4	WD	-	-	-	03	20 MIN	EXISTING PAIR DOORS TO REMAIN
24	(E)	MT	3'-0"	8'-8"	1 3/4"	4	WD	-	-	-	03	20 MIN	EXISTING DOOR TO REMAIN
25	(E)	WD	3'-0"	8'-8"	1 3/4"	4	WD	-	-	-	01	20 MIN	EXISTING DOOR TO REMAIN
26	(E)	WD	3'-0"	8'-8"	1 3/4"	4	WD	-	-	-	01	20 MIN	EXISTING DOOR TO REMAIN

APPL 01-111090  
SEP 08 2010







# QUOTATION

## Oakland Unified School District: Highland K12

Quote Number: 12MAA-133454/C

*CREATED 4/27/2012*

*REVISED 7/12/2012*

**Valid Through 7/26/2012**

**KI is pleased to present the enclosed quotation.**

**The following items are included:**

- Detailed PO requirements
- Quote Summary
- Itemized Quote

---

For an environmentally friendly option, please consider printing only the pages you need in black ink.



**Jessica Gelin**

Sales Rep

[jessica.gelin@ki.com](mailto:jessica.gelin@ki.com)

(510) 593-3597



# QUOTATION

## Final Considerations:

To ensure your Purchase Order (PO) is processed quickly and efficiently, please adhere to the following requirements:

Customer represents that the product information contained within this quote is complete and accurate. Changes to quantities and/or options/finishes will affect this quote. If applicable, other charges such as freight, tax, installation and/or delivery fees may be added at time of order.

Sales resulting from purchase orders issued by the customer to KI (Whether related to this quotation or otherwise) are governed and controlled by the Terms and Conditions found at [www.KI.com/terms](http://www.KI.com/terms)

Prepared by Jessica Gelin

### "Reference Only"

Market Code: 2=2=K-12

Drawing #: D027297\_00\_00\_L04\_S

Opportunity #: 133454

Quote Filename: Oakland Unified School District: Highland  
K12 - 12MAA-133454

Proj Num - 12MAA-133454/C

Model Opt: Y GSA: N

Proj Totals: Y

Pricing Selection: Net Only

**Jessica Gelin**

Sales Rep

[jessica.gelin@ki.com](mailto:jessica.gelin@ki.com)

(510) 593-3597

1. All purchase orders must be issued to KI or KI c/o the dealer with this address:  
KI  
1330 Bellevue Street  
Green Bay, WI 54302
2. The following items must be included on all purchase orders:
  - o Sold To/Bill To Information: complete legal name, address, telephone number and fax number
  - o Ship To Information: complete legal name, address, contact name, contact phone number
  - o Purchase Order Number: a customer-specific identifier, typically a sequential purchase order number or requisition number
  - o Issue Date: date the purchase order was issued
  - o Sales Tax: applicable sales tax will be added upon KI invoicing. If tax exempt, customer must provide or have the tax exempt certificate on file at KI
  - o Purchase Order Total: total of all items and services included on the purchase order
  - o Authorization: signature of authorized purchasing agent or buying entity
  - o Order Details: reference a fully optioned KI quote (ex: 11KGH-85432) or include all the information listed below
    - Quantity of each item
    - Complete model number, including all finish and option information (by line item)
    - Net purchase price (by line item)
    - Extended net purchase price (all line items)
    - Any additional applicable charges (ex: installation and/or delivery charges)
    - Contract name and/or number if pricing is based on a contract reference
3. Signatures on a quote or a worksheet cannot be accepted as a purchase order.
4. In the event that you do not have a formal Purchase Order process, please contact your KI Sales Representative or call 1-800-424-2432, and we will assist you with creating a PO.

We appreciate your cooperation in providing us with all the required information listed above on your Purchase Order. Complete information helps us serve you better. Thank you for your order.

**Purchase Orders that do not meet these requirements will be placed on hold until complete information is received by KI. Purchase orders on hold are not released to manufacturing or assigned a delivery date. KI order lead times begin once the order is released to manufacturing.**



# QUOTATION

## Oakland Unified School District: Highland K12

Quote Number: 12MAA-133454/C

CREATED 4/27/2012

REVISED 7/12/2012

**Valid Through 7/26/2012**

Customer represents that the product information contained within this quote is complete and accurate. Changes to quantities and/or options/finishes will affect this quote. If applicable, other charges such as freight, tax, installation and/or delivery fees may be added at time of order.

Sales resulting from purchase orders issued by the customer to KI (Whether related to this quotation or otherwise) are governed and controlled by the Terms and Conditions found at [www.KI.com/terms](http://www.KI.com/terms)

Prepared by Jessica Gelin

**"Reference Only"**

Market Code: 2=2=K-12

Drawing #: D027297\_00\_00\_L04\_S

Opportunity #: 133454

Quote Filename: Oakland Unified School District: Highland K12 - 12MAA-133454

Proj Num - 12MAA-133454/C

Model Opt: Y GSA: N

Proj Totals: Y

Pricing Selection: Net Only

**Jessica Gelin**

Sales Rep

[jessica.gelin@ki.com](mailto:jessica.gelin@ki.com)

(510) 593-3597

PRODUCT TOTALS	\$10,870.56
Other- See Quote Details	\$2,528.05
<b>GRAND TOTAL</b>	<b>\$13,398.61</b>

**KI Offers A Lease Finance Option For All of Your Furniture Needs. Contact Us For A Quote.**

**Requested Delivery Date**

**To be Determined**

**Sold To**

Oakland Unified School District  
900 High St Receptionist Desk  
Oakland, CA 94601--440

Attn: Eric Sih  
P. 510-912-7915

**End User**

RISE Community School – Highland  
8521 A Street  
Oakland, CA 94621

Attn: Eric Sih

**Ship To**

Golden PMI  
4441 Enterprise Street  
Fremont, CA 94538

Attn: Receiving

**Installation**

Golden PMI  
4441 Enterprise Street  
Fremont, CA 94538

Attn: Lou Reguero  
P. (510) 673-8236 F. (510) 498-5934  
Vendor # 30097

**Client Notes:**

KI is implementing a varied price increase effective 8/1/2012. Quotes issued with current list pricing are valid on PO's received on or before 7/31/2012.

Estimated lead-times: 4-6 weeks

Freight included

Installation included

Tax included

Separate PO goes to Golden PMI for delivery and installation.

# QUOTATION

**CREATED** 4/27/2012  
**VALID THROUGH** 7/26/2012  
**Prepared By** Jessica Gelin  
**Quote Filename** Oakland Unified School District: Highland K12 - 12MAA-133454/C

Line	Model		Qty.	Sell Price	Extended Total	TBD Options
<b>Description</b>						
101 ADMIN - TRUE						
2.1	KI74/JR39	Impress Ultra Task, Ped Base, Mesh Mid Bk, Adj. Arms, Uph St	2	\$379.68	\$759.36	
		SELECT SEAT OPTION	Sliding seat	/SLD		
		SELECT BACK PANEL	Black	-BL		
		SELECT UPHOLSTERY GRADE/COLOR	(STD) CA 117 Foam and Fabric	/NFR		
		IMPRESS UPHOLSTERY	Fabric Grade 1	GRD1		
		G1 Fabric	1B SUBURB	1BUPHSUBUR		
		1B SUBURB	MOLTEN	/1BMN		
		SELECT BASE OPTION	Carpet casters	/C		
		SELECT HEIGHT OPTION	Standard height (17 3/4"-22 1/4")	-NS		
		SELECT MEMORY FOAM	No memory foam	/NF		
		<b>Price Description: Standard Delivered</b>				
2.2	S7P/1520MBBF	700 Series Files Mobile Ped-Box/Box/File-20" Nominal Depth	4	\$335.04	\$1,340.16	
		PULL OPTIONS	Classic (inset pull)	/CLSC		
		UNIT COLOR	Sunburst	/SU		
		KEY OPTION	Key alike	/KA		
		NATIONAL KEY ALIKE	Key Alike Lock #101	/L101		
		<b>Price Description: Standard Delivered</b>				
2.3	S7P/1520MFF	700 Series Files Mobile Ped-File/File-20" Nominal Depth	4	\$306.72	\$1,226.88	
		PULL OPTIONS	Classic (inset pull)	/CLSC		
		UNIT COLOR	Sunburst	/SU		
		KEY OPTION	Key alike	/KA		
		NATIONAL KEY ALIKE	Key Alike Lock #101	/L101		
		<b>Price Description: Standard Delivered</b>				
2.4	TEB16BF6	True Base Feed 6-6-2, 6 Circuits	2	\$96.48	\$192.96	
		Trim Color	Sand	/TSA		
		<b>Price Description: Standard Delivered</b>				
2.5	THC4872-74P	True Stand-Up Hgt Corner Transaction 48x72", 74P Edge	1	\$394.56	\$394.56	
		Worksurface Grommet Color	Sand	/TSA		
		Select Surface Finish	KI Laminates	Standard		
		KI Laminates	BILTMORE CHERRY LAM 7924-38	/LBT		
		Worksurface Edge Color	Biltmore Cherry Edge	/EBT		
		Frame Grommet Color	Sand grommet	/BSA		
		Desk Color	Sunburst	/SU		
		<b>Price Description: Standard Delivered</b>				
2.6	TLS42-74P	True Low Hgt Transaction 42", 74P Edge	1	\$246.72	\$246.72	
		Worksurface Grommet Color	Sand	/TSA		
		Select Surface Finish	KI Laminates	Standard		
		KI Laminates	BILTMORE CHERRY LAM 7924-38	/LBT		
		Worksurface Edge Color	Biltmore Cherry Edge	/EBT		
		Desk Color	Sunburst	/SU		
		<b>Price Description: Standard Delivered</b>				
2.7	TLT5.36	Overhead Task Light, 36"W, For 42" & 48" Overheads	2	\$34.56	\$69.12	
		<b>Price Description: Standard Delivered</b>				
2.8	TLT5.48	Universal Shelf/Cabinet Task Light, 48"W, For 54 & 60" Overhead	2	\$37.44	\$74.88	
		<b>Price Description: Standard Delivered</b>				
2.9	TR2442/F-74P	True Rect. 24x42"W, Fullmd, 74P Edge	1	\$560.16	\$560.16	
		Transition End Panels	Two transitional end panels	/B		
		No Worksurface Center Grommet	No center grommet	-NCG		
		Worksurface Grommet Color	Sand	/TSA		
		Select Surface Finish	KI Laminates	Standard		
		KI Laminates	BILTMORE CHERRY LAM 7924-38	/LBT		

# QUOTATION

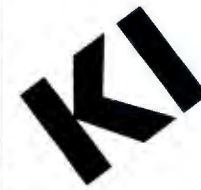
CREATED 4/27/2012  
 VALID THROUGH 7/26/2012  
 Prepared By Jessica Gelin  
 Quote Filename Oakland Unified School District: Highland K12 - 12MAA-133454/C

Line	Model	Qty.	Sell Price	Extended Total	TBD Options
	Worksurface Edge Color Biltmore Cherry Edge /EBT Frame Grommet Color Sand grommet /BSA Desk Color Sunburst /SU <b>Price Description: Standard Delivered</b>				
2.10	TR2442/F-74P True Rect. 24x42"W,Fullmd,74P Edge	1	\$582.72	\$582.72	
	Transition End Panels Left transitional end panel /L No Worksurface Center Grommet No center grommet -NCG Worksurface Grommet Color Sand /TSA Select Surface Finish KI Laminates Standard KI Laminates BILTMORE CHERRY LAM 7924-38 /LBT Worksurface Edge Color Biltmore Cherry Edge /EBT Frame Grommet Color Sand grommet /BSA Desk Color Sunburst /SU <b>Price Description: Standard Delivered</b>				
2.11	TRDJ6ST True Desk Jumper 6-2-2,6 Circuits,Std	6	\$45.60	\$273.60	
	<b>Price Description: Standard Delivered</b>				
2.12	TRER6RC1 True Receptacles 6-2-2,Circuit 1	4	\$14.88	\$59.52	
	Trim Color Sand /TSA				
	<b>Price Description: Standard Delivered</b>				
2.13	TRER6RC2 True Receptacles 6-2-2,Circuit 2	4	\$14.88	\$59.52	
	Trim Color Sand /TSA				
	<b>Price Description: Standard Delivered</b>				
2.14	TRER6RC3 True Receptacles 6-2-2,Circuit 3	2	\$14.88	\$29.76	
	Trim Color Sand /TSA				
	<b>Price Description: Standard Delivered</b>				
2.15	TRWW6R42 True Rigid Wireway 6-2-2,6 Circuits,42"W	2	\$62.88	\$125.76	
	Frame Color Sunburst /SU				
	<b>Price Description: Standard Delivered</b>				
2.16	TRWW6R48 True Rigid Wireway 6-2-2,6 Circuits,48"W	3	\$70.56	\$211.68	
	Frame Color Sunburst /SU				
	<b>Price Description: Standard Delivered</b>				
2.17	TRWW6R66 True Rigid Wireway 6-2-2,6 Circuits,66"W	2	\$150.72	\$301.44	
	Frame Color Sunburst /SU				
	<b>Price Description: Standard Delivered</b>				
2.18	TRWW6R72D True Rigid Wireway 6-2-2,6 Circuits,72"W,Dual	1	\$174.72	\$174.72	
	Frame Color Sunburst /SU				
	<b>Price Description: Standard Delivered</b>				
2.19	TS24486624/F/FS-74P True Shoe 24x66 Rt,Fullmd,Full Sd Md,74P Edge	1	\$965.28	\$965.28	
	Transition End Panels Two transitional end panels /B Grommet Option Yes center grommet /YCG Worksurface Grommet Color Sand /TSA Select Surface Finish KI Laminates Standard KI Laminates BILTMORE CHERRY LAM 7924-38 /LBT Worksurface Edge Color Biltmore Cherry Edge /EBT Frame Grommet Color Sand grommet /BSA Desk Color Sunburst /SU <b>Price Description: Standard Delivered</b>				
2.20	TS24487224/F/FS-74P *SPECIAL*2 Tone Paint- Legs painted SA, SAND 862L(to match grommet color), Beam Modesty, Lower Modesty & End Panels Painted SU	1	\$1,044.48	\$1,044.48	
	Transition End Panels Right transitional end panel /R Grommet Option Yes center grommet /YCG Worksurface Grommet Color Sand /TSA Select Surface Finish KI Laminates Standard				

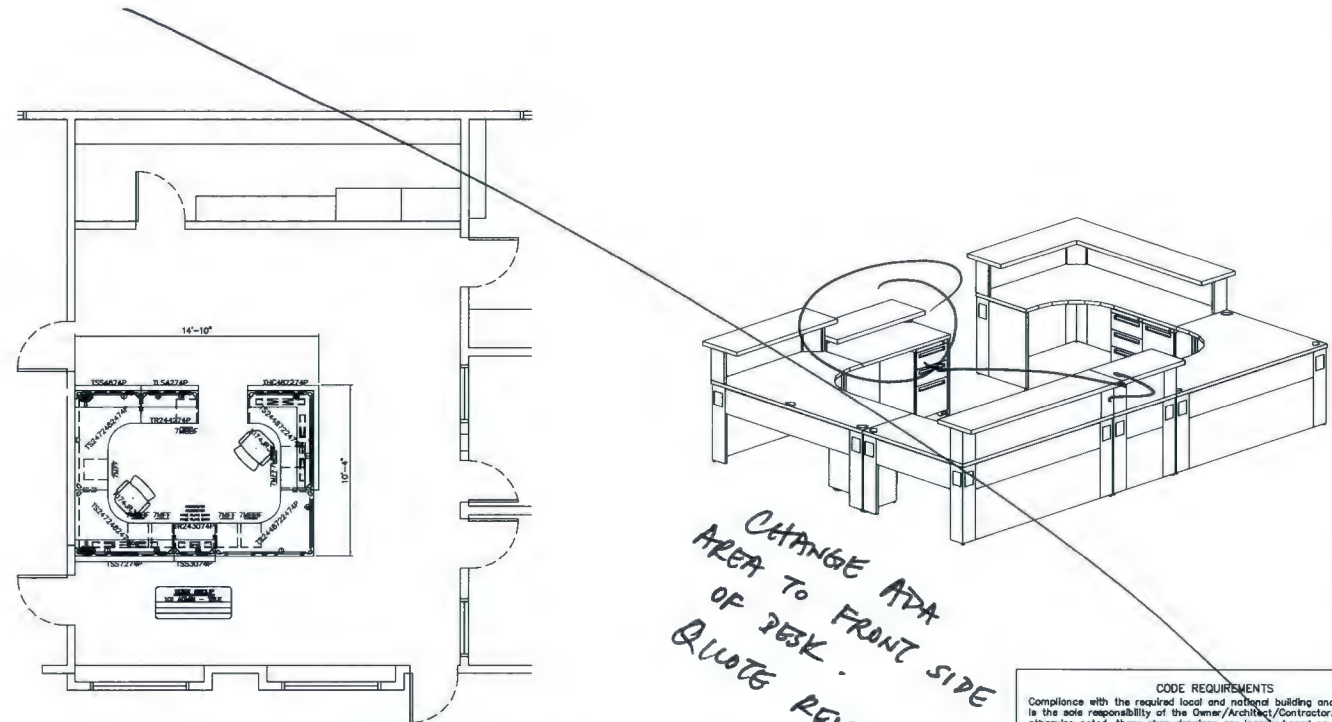
# QUOTATION

CREATED 4/27/2012  
 VALID THROUGH 7/26/2012  
 Prepared By Jessica Gelin  
 Quote Filename Oakland Unified School District: Highland K12 - 12MAA-133454/C

Line	Model	Qty.	Sell Price	Extended Total	TBD Options
	KI Laminates Worksurface Edge Color Frame Grommet Color Desk Color	BILTMORE CHERRY LAM 7924-38 /LBT Biltmore Cherry Edge /EBT Sand grommet /BSA Sunburst /SU *SPECIAL*2 Tone Paint- Legs painted SA, SAND 862L(to match grommet color), Beam Modesty, Lower Modesty & End Panels Painted SU Non-standard items are not returnable and not cancelable Pricing based on standard finishes unless noted Special pricing valid through 12/18/12	S12504459		
	<b>MK: S12504459</b> <b>Price Description: Standard Delivered</b>				
2.21	TS24664824/P/PS-74P	1	\$865.44	\$865.44	
	True Shoe 24x66 Lt,Prtlmd,Full Sd Md,74P Edge Transition End Panels Grommet Option Worksurface Grommet Color Select Surface Finish KI Laminates Worksurface Edge Color Frame Grommet Color Desk Color	Two transitional end panels /B Yes center grommet /YCG Sand /TSA KI Laminates Standard BILTMORE CHERRY LAM 7924-38 /LBT Biltmore Cherry Edge /EBT Sand grommet /BSA Sunburst /SU			
	<b>Price Description: Standard Delivered</b>				
2.22	TS24724824/F/PS-74P	1	\$853.44	\$853.44	
	True Shoe 24x72 Lt,Fullmd,Prtl Sd Md,74P Edge Transition End Panels Grommet Option Worksurface Grommet Color Select Surface Finish KI Laminates Worksurface Edge Color Frame Grommet Color Desk Color	Two transitional end panels /B Yes center grommet /YCG Sand /TSA KI Laminates Standard BILTMORE CHERRY LAM 7924-38 /LBT Biltmore Cherry Edge /EBT Sand grommet /BSA Sunburst /SU			
	<b>Price Description: Standard Delivered</b>				
2.23	TSS48-74P	1	\$214.08	\$214.08	
	True Stand-Up Hgt Transaction 48",74P Edge Worksurface Grommet Color Select Surface Finish KI Laminates Worksurface Edge Color Desk Color	Sand /TSA KI Laminates Standard BILTMORE CHERRY LAM 7924-38 /LBT Biltmore Cherry Edge /EBT Sunburst /SU			
	<b>Price Description: Standard Delivered</b>				
2.24	TSS66-74P	1	\$225.12	\$225.12	
	True Stand-Up Hgt Transaction 66",74P Edge Worksurface Grommet Color Select Surface Finish KI Laminates Worksurface Edge Color Desk Color	Sand /TSA KI Laminates Standard BILTMORE CHERRY LAM 7924-38 /LBT Biltmore Cherry Edge /EBT Sunburst /SU			
	<b>Price Description: Standard Delivered</b>				
2.25	TCOMFP	2	\$9.60	\$19.20	
	True Face Plate Bracket Frame Color	Sunburst /SU			
	<b>Price Description: Standard Delivered</b>				
Description			WorkGroup Product Subtotal	\$10,870.56	
I01 ADMIN - TRUE			Product SubTotal:	\$10,870.56	
			Delivery and In stallation	\$1,450.00	



Drawn using Encompass®  
 This drawing is the confidential property of KiConnect International, Inc. and contains information that is not to be used except in consideration of bids or proposals rendered herewith. Reproduction or copying of this drawing, in whole or part, is prohibited.



WORKGROUP-101 ADMIN - TRUE

ITEM	QTY	MODEL NUMBER-OPTIONS	TAG	DESCRIPTION
1	2	K174/R39	K174/R39	IMPRESS ULTRA TASK_PED BASEMESH MID BK ADJL ARMUPH ST
2	4	S79/1520MBF	7MBF	700 SERIES FILES MOBILE PED-BOX/BOX FILE-20" NOMINAL DPTH
3	4	S7P/1520MFT	7MFT	700 SERIES FILES MOBILE PED-FILE-FILE-20" NOMINAL DPTH
4	2	T00MCSPK		TRUE CABLE SUPPORT & PACK/BLACK ONLY
5	2	T00MP		TRUE FACE PLATE BRACKET
6	2	T6968F6		TRUE BASE FEED 6-6-2, 6 CIRCUITS
7	1	THC4872-74P	THC487274P	TRUE STAND-UP HGT CORNER TRANSACTION 48X72,74P EDGE
8	1	TL542-74P	TL54274P	TRUE LOW HGT TRANSACTION 42,74P EDGE
9	1	TL15.24		UNIVERSAL SHELF/CABINET TASK LIGHT,24"W FOR 30 & 36" OVERHEAD
10	1	TL15.36		OVERHEAD TASK LIGHT, 36"W FOR 42" & 48" OVERHEADS
11	2	TL15.48		UNIVERSAL SHELF/CABINET TASK LIGHT,48"W FOR 54 & 60" OVERHEAD
12	1	TR24307-74P-R-NOG	TR243074P	TRUE RECT. 24X30"W/FULLMD,74P EDGE
13	1	TR24427-74P-L-NOG	TR244274P	TRUE RECT. 24X42"W/FULLMD,74P EDGE
14	5	TR085T		TRUE DESK AMPER 6-2-2,6 CIRCUITS,STD
15	2	TR68RC1		TRUE RECEPTACLES 6-2-2,CIRCUIT 1
16	4	TR68RC2		TRUE RECEPTACLES 6-2-2,CIRCUIT 2
17	2	TR68RC3		TRUE RECEPTACLES 6-2-2,CIRCUIT 3
18	1	TR1WR830		TRUE RIGID WIREWAY 8-2-2,6 CIRCUITS,30"W
19	1	TR1WR842		TRUE RIGID WIREWAY 8-2-2,6 CIRCUITS,42"W
20	3	TR1WR846		TRUE RIGID WIREWAY 8-2-2,6 CIRCUITS,48"W
21	3	TR1WR8720		TRUE RIGID WIREWAY 8-2-2,6 CIRCUITS,72"W,DUAL
22	1	TS24487224/F/FS-74P-B:YDC	TS2448722474P	TRUE SHOE 24X72 RT,FULLMD,FULL SD MD,74P EDGE
23	1	TS24487224/F/FS-74P-R:YDC	TS2448722474P	TRUE SHOE 24X72 LT,FULLMD,FULL SD MD,74P EDGE
24	1	TS24724824/F/FS-74P-B:YDC	TS2472482474P	TRUE SHOE 24X72 LT,FULLMD,PRTL SD MD,74P EDGE
25	1	TS24724824/F/FS-74P-R:YDC	TS2472482474P	TRUE SHOE 24X72 RT,PRTLMD,FULL SD MD,74P EDGE
26	1	TSS30-74P	TSS3074P	TRUE STAND-UP HGT TRANSACTION 30,74P EDGE
27	1	TSS48-74P	TSS4874P	TRUE STAND-UP HGT TRANSACTION 48,74P EDGE
28	1	TSS72-74P	TSS7274P	TRUE STAND-UP HGT TRANSACTION 72,74P EDGE

CHANGE ADA AREA TO FRONT SIDE OF DESK - QUOTE REVISED!

**CODE REQUIREMENTS**  
 Compliance with the required local and national building and safety codes is the sole responsibility of the Owner/Architect/Contractor. Unless otherwise noted, these shop drawings are loosely based on code requirements for assembly seating as found in BOCA and the Life Safety Code. Code information above is offered for informational purposes only and strictly as a courtesy to the Owner/Architect/Contractor. This is in no way an assumption of duty on the part of KI relative to code interpretation and compliance. KI personnel are not trained for, nor are they experts at code compliance or interpretation.

**FIELD VERIFICATION**  
 These shop drawings incorporate building information compiled from various sources associated with this project and deemed as reliable. Conditions directly affecting the product or its installation must be field verified.

**DRAWING REVIEW**  
 These shop drawings are produced to ensure compliance with the contract. As such, these drawings must be reviewed by the Owner/Architect/Contractor, or other appropriate representative. If drawings are correct, mark the appropriate box below. If incorrect, note corrections to be made and return to KI for corrections. Any deviations from the contract included in these shop drawings must be approved in writing from the Owner/Architect/Contractor.

Authorized signature indicates review of these shop drawings. Below signature print name, title, company or affiliation, and date. Manufacture of product shown is not scheduled until drawing review is complete and authorized signature is received.

APPROVED AS NOTED  
 REVISE AND RESUBMIT

SIGNATURE \_\_\_\_\_ KI REP INITIALS \_\_\_\_\_  
 PRINT \_\_\_\_\_ DATE \_\_\_\_\_

**\* PRELIMINARY PLAN NOT FOR CONSTRUCTION \***

PROJECT TITLE:  
HIGHLAND K12

OAKLAND, CA

FLOOR/AREA:

PRODUCT LINE:

REPRESENTATIVE:  
JESSICA GELIN

DEALER:

ORDER NUMBER:

DATE:  
04/27/2012

REVISIONS:		
NO.	DATE	BY DESCRIPTION

DRAWN BY: SCALE:  
MAA 3/16" = 1'-0"

DRAWING No.:  
D027297\_00\_00\_L04\_S

SHEET: Floor Plan  
2 of 3.C



# QUOTATION

**Oakland Unified School District: Highland K12**  
Quote Number: 12MAA-133454/C

*CREATED 4/27/2012*

*REVISED 6/13/2012*

**Valid Through 7/26/2012**

**KI is pleased to present the enclosed quotation.**

**The following items are included:**

- Detailed PO requirements
- Quote Summary
- Itemized Quote
- Product options that must be determined (aka TBDs) exist and must be selected. Please contact your KI Representative for assistance with specifications.

For an environmentally friendly option, please consider printing only the pages you need in black ink.







# QUOTATION

## Final Considerations:

To ensure your Purchase Order (PO) is processed quickly and efficiently, please adhere to the following requirements:

Customer represents that the product information contained within this quote is complete and accurate. Changes to quantities and/or options/finishes will affect this quote. If applicable, other charges such as freight, tax, installation and/or delivery fees may be added at time of order.

Sales resulting from purchase orders issued by the customer to KI (Whether related to this quotation or otherwise) are governed and controlled by the Terms and Conditions found at [www.KI.com/terms](http://www.KI.com/terms)

Prepared by Jessica Gelin

### "Reference Only"

Market Code: 2=2=K-12

Drawing #: D027297\_00\_00\_L04\_S

Opportunity #: 133454

Quote Filename: Oakland Unified School District: Highland  
K12 - 12MAA-133454

Proj Num - 12MAA-133454/C  
Model Opt: Y GSA: N  
Proj Totals: Y  
Pricing Selection: Net Only

1. All purchase orders must be issued to KI or KI c/o the dealer with this address:  
KI  
1330 Bellevue Street  
Green Bay, WI 54302
2. The following items must be included on all purchase orders:
  - Sold To/Bill To Information: complete legal name, address, telephone number and fax number
  - Ship To Information: complete legal name, address, contact name, contact phone number
  - Purchase Order Number: a customer-specific identifier, typically a sequential purchase order number or requisition number
  - Issue Date: date the purchase order was issued
  - Sales Tax: applicable sales tax will be added upon KI invoicing. If tax exempt, customer must provide or have the tax exempt certificate on file at KI
  - Purchase Order Total: total of all items and services included on the purchase order
  - Authorization: signature of authorized purchasing agent or buying entity
  - Order Details: reference a fully optioned KI quote (ex: 11KGGH-85432) or include all the information listed below
    - Quantity of each item
    - Complete model number, including all finish and option information (by line item)
    - Net purchase price (by line item)
    - Extended net purchase price (all line items)
    - Any additional applicable charges (ex: installation and/or delivery charges)
    - Contract name and/or number if pricing is based on a contract reference
3. Signatures on a quote or a worksheet cannot be accepted as a purchase order.
4. In the event that you do not have a formal Purchase Order process, please contact your KI Sales Representative or call 1-800-424-2432, and we will assist you with creating a PO.

We appreciate your cooperation in providing us with all the required information listed above on your Purchase Order. Complete information helps us serve you better. Thank you for your order.

**Purchase Orders that do not meet these requirements will be placed on hold until complete information is received by KI. Purchase orders on hold are not released to manufacturing or assigned a delivery date. KI order lead times begin once the order is released to manufacturing.**



# QUOTATION

## Oakland Unified School District: Highland K12

Quote Number: 12MAA-133454/C

CREATED 4/27/2012

REVISED 6/13/2012

Valid Through 7/26/2012

Customer represents that the product information contained within this quote is complete and accurate. Changes to quantities and/or options/finishes will affect this quote. If applicable, other charges such as freight, tax, installation and/or delivery fees may be added at time of order.

Sales resulting from purchase orders issued by the customer to KI (Whether related to this quotation or otherwise) are governed and controlled by the Terms and Conditions found at [www.KI.com/terms](http://www.KI.com/terms)

PRODUCT TOTALS	\$11,122.56
Other- See Quote Details	\$2,550.10
<b>GRAND TOTAL</b>	<b>\$13,672.66</b>

**KI Offers A Lease Finance Option For All of Your Furniture Needs. Contact Us For A Quote.**

Prepared by Jessica Gelin

**Requested Delivery Date**

To be Determined

**Sold To**

To be Determined

**"Reference Only"**

Market Code: 2=2=K-12

Drawing #: D027297\_00\_00\_L04\_S

Opportunity #: 133454

Quote Filename: Oakland Unified School District: Highland K12 - 12MAA-133454

**End User**

To be Determined

**Ship To**

Golden PMI  
4441 Enterprise Street  
Fremont, CA 94538

Attn: Receiving

**Installation**

Golden PMI  
4441 Enterprise Street  
Fremont, CA 94538

Attn: Lou Reguero  
P. (510) 673-8236 F. (510) 498-5934  
Vendor # 30097

Proj Num - 12MAA-133454/C  
Model Opt: Y GSA: N  
Proj Totals: Y  
Pricing Selection: Net Only

**Client Notes:**

Estimated lead-times: 4-6 weeks

Freight included

Installation included

Tax included

Separate PO goes to Golden PMI for delivery and installation.

# QUOTATION

CREATED  
VALID THROUGH  
Prepared By  
Quote Filename

4/27/2012  
7/26/2012  
Jessica Gelin  
Oakland Unified School District: Highland K12 - 12MAA-133454/C

Product options that must be determined (aka TBDs) exist and must be selected prior to purchase order submittal. These items are notated in the far right column with (?)

Line	Model		Qty.	Sell Price	Extended Total	TBD Options
<b>Description</b>						
<b>101 ADMIN - TRUE</b>						
2.1	K174/JR39	Impress Ultra Task, Ped Base, Mesh Mid Bk, Adj. Arms, Uph St	2	\$379.68	\$759.36	(?)
		SELECT SEAT OPTION	>>To Be Determined	TBD<<		
		SELECT BACK PANEL	>>To Be Determined	TBD<<		
		SELECT UPHOLSTERY GRADE/COLOR	>>To Be Determined	TBD<<		
		SELECT BASE OPTION	>>To Be Determined	TBD<<		
		SELECT HEIGHT OPTION	>>To Be Determined	TBD<<		
		SELECT MEMORY FOAM	>>To Be Determined	TBD<<		
		<b>Price Description: Standard Delivered</b>				
2.2	S7P/1520MBBF	700 Series Files Mobile Ped-Box/Box/File-20" Nominal Depth	4	\$335.04	\$1,340.16	(?)
		PULL OPTIONS	>>To Be Determined	TBD<<		
		UNIT COLOR	>>To Be Determined	TBD<<		
		KEY OPTION	>>To Be Determined	TBD<<		
		<b>Price Description: Standard Delivered</b>				
2.3	S7P/1520MFF	700 Series Files Mobile Ped-File/File-20" Nominal Depth	4	\$306.72	\$1,226.88	(?)
		PULL OPTIONS	>>To Be Determined	TBD<<		
		UNIT COLOR	>>To Be Determined	TBD<<		
		KEY OPTION	>>To Be Determined	TBD<<		
		<b>Price Description: Standard Delivered</b>				
2.4	TCOMCSPK	True Cable Support, 8 Pack, Black Only	2	\$18.24	\$36.48	
		<b>Price Description: Standard Delivered</b>				
2.5	TCOMFP	True Face Plate Bracket	2	\$9.60	\$19.20	(?)
		Frame Color	>>To Be Determined	TBD<<		
		<b>Price Description: Standard Delivered</b>				
2.6	TEBI6BF6	True Base Feed 6-6-2, 6 Circuits	2	\$96.48	\$192.96	(?)
		Trim Color	>>To Be Determined	TBD<<		
		<b>Price Description: Standard Delivered</b>				
2.7	THC4872-74P	True Stand-Up Hgt Corner Transaction 48x72", 74P Edge	1	\$394.56	\$394.56	(?)
		Worksurface Grommet Color	>>To Be Determined	TBD<<		
		Select Surface Finish	>>To Be Determined	TBD<<		
		Worksurface Edge Color	>>To Be Determined	TBD<<		
		Frame Grommet Color	>>To Be Determined	TBD<<		
		Desk Color	>>To Be Determined	TBD<<		
		<b>Price Description: Standard Delivered</b>				
2.8	TLS42-74P	True Low Hgt Transaction 42", 74P Edge	1	\$246.72	\$246.72	(?)
		Worksurface Grommet Color	>>To Be Determined	TBD<<		
		Select Surface Finish	>>To Be Determined	TBD<<		
		Worksurface Edge Color	>>To Be Determined	TBD<<		
		Desk Color	>>To Be Determined	TBD<<		
		<b>Price Description: Standard Delivered</b>				
2.9	TLT5.24	Universal Shelf/Cabinet Task Light, 24"W, For 30 & 36" Overhead	1	\$31.68	\$31.68	
		<b>Price Description: Standard Delivered</b>				
2.10	TLT5.36	Overhead Task Light, 36"W, For 42" & 48" Overheads	1	\$34.56	\$34.56	
		<b>Price Description: Standard Delivered</b>				
2.11	TLT5.48	Universal Shelf/Cabinet Task Light, 48"W, For 54 & 60" Overhead	2	\$37.44	\$74.88	
		<b>Price Description: Standard Delivered</b>				
2.12	TR2430/F-74P	True Rect. 24x30"W, Fullmd, 74P Edge	1	\$516.48	\$516.48	(?)
		Transition End Panels	Two transitional end panels	/B		
		No Worksurface Center Grommet	No center grommet	-NCG		
		Worksurface Grommet Color	>>To Be Determined	TBD<<		
		Select Surface Finish	>>To Be Determined	TBD<<		

# QUOTATION

**CREATED** 4/27/2012  
**VALID THROUGH** 7/26/2012  
**Prepared By** Jessica Gelin  
**Quote Filename** Oakland Unified School District: Highland K12 - 12MAA-133454/C

Product options that must be determined (aka TBDs) exist and must be selected prior to purchase order submittal. These items are notated in the far right column with (?)

Line	Model	Qty.	Sell Price	Extended Total	TBD Options
	Worksurface Edge Color >>To Be Determined TBD<< Frame Grommet Color >>To Be Determined TBD<< Desk Color >>To Be Determined TBD<< <b>Price Description: Standard Delivered</b>				
2.13	TR2442/F-74P True Rect. 24x42"W,Fullmd,74P Edge Transition End Panels Left transitional end panel /L No Worksurface Center Grommet No center grommet -NCG Worksurface Grommet Color >>To Be Determined TBD<< Select Surface Finish >>To Be Determined TBD<< Worksurface Edge Color >>To Be Determined TBD<< Frame Grommet Color >>To Be Determined TBD<< Desk Color >>To Be Determined TBD<< <b>Price Description: Standard Delivered</b>	1	\$582.72	\$582.72	(?)
2.14	TRDJ6ST True Desk Jumper 6-2-2,6 Circuits,Std <b>Price Description: Standard Delivered</b>	5	\$45.60	\$228.00	
2.15	TRER6RC1 True Receptacles 6-2-2,Circuit 1 Trim Color >>To Be Determined TBD<< <b>Price Description: Standard Delivered</b>	5	\$14.88	\$74.40	(?)
2.16	TRER6RC2 True Receptacles 6-2-2,Circuit 2 Trim Color >>To Be Determined TBD<< <b>Price Description: Standard Delivered</b>	4	\$14.88	\$59.52	(?)
2.17	TRER6RC3 True Receptacles 6-2-2,Circuit 3 Trim Color >>To Be Determined TBD<< <b>Price Description: Standard Delivered</b>	2	\$14.88	\$29.76	(?)
2.18	TRWW6R30 True Rigid Wireway 6-2-2,6 Circuits,30"W Frame Color >>To Be Determined TBD<< <b>Price Description: Standard Delivered</b>	1	\$50.40	\$50.40	(?)
2.19	TRWW6R42 True Rigid Wireway 6-2-2,6 Circuits,42"W Frame Color >>To Be Determined TBD<< <b>Price Description: Standard Delivered</b>	1	\$62.88	\$62.88	(?)
2.20	TRWW6R48 True Rigid Wireway 6-2-2,6 Circuits,48"W Frame Color >>To Be Determined TBD<< <b>Price Description: Standard Delivered</b>	3	\$70.56	\$211.68	(?)
2.21	TRWW6R72D True Rigid Wireway 6-2-2,6 Circuits,72"W,Dual Frame Color >>To Be Determined TBD<< <b>Price Description: Standard Delivered</b>	3	\$174.72	\$524.16	(?)
2.22	TS24487224/F/FS-74P True Shoe 24x72 Rt,Fullmd,Full Sd Md,74P Edge Transition End Panels Two transitional end panels /B Grommet Option Yes center grommet /YCG Worksurface Grommet Color >>To Be Determined TBD<< Select Surface Finish >>To Be Determined TBD<< Worksurface Edge Color >>To Be Determined TBD<< Frame Grommet Color >>To Be Determined TBD<< Desk Color >>To Be Determined TBD<< <b>Price Description: Standard Delivered</b>	1	\$1,001.28	\$1,001.28	(?)
2.23	TS24487224/F/FS-74P True Shoe 24x72 Rt,Fullmd,Full Sd Md,74P Edge Transition End Panels Right transitional end panel /R Grommet Option Yes center grommet /YCG Worksurface Grommet Color >>To Be Determined TBD<< Select Surface Finish >>To Be Determined TBD<< Worksurface Edge Color >>To Be Determined TBD<< Frame Grommet Color >>To Be Determined TBD<<	1	\$1,023.84	\$1,023.84	(?)

# QUOTATION

**CREATED** 4/27/2012  
**VALID THROUGH** 7/26/2012  
**Prepared By** Jessica Gelin  
**Quote Filename** Oakland Unified School District: Highland K12 - 12MAA-133454/C

Product options that must be determined (aka TBDs) exist and must be selected prior to purchase order submittal. These items are notated in the far right column with (?)

Line	Model	Qty.	Sell Price	Extended Total	TBD Options
	Desk Color	>>To Be Determined	TBD<<		
	<b>Price Description: Standard Delivered</b>				
2.24	TS24724824/F/PS-74P	1	\$853.44	\$853.44	(?)
	True Shoe 24x72 Lt,Fullmd,Prtl Sd Md,74P Edge				
	Transition End Panels	Two transitional end panels	/B		
	Grommet Option	Yes center grommet	/YCG		
	Worksurface Grommet Color	>>To Be Determined	TBD<<		
	Select Surface Finish	>>To Be Determined	TBD<<		
	Worksurface Edge Color	>>To Be Determined	TBD<<		
	Frame Grommet Color	>>To Be Determined	TBD<<		
	Desk Color	>>To Be Determined	TBD<<		
	<b>Price Description: Standard Delivered</b>				
2.25	TS24724824/P/FS-74P	1	\$901.92	\$901.92	(?)
	True Shoe 24x72 Lt,Prtlmd,Full Sd Md,74P Edge				
	Transition End Panels	Two transitional end panels	/B		
	Grommet Option	Yes center grommet	/YCG		
	Worksurface Grommet Color	>>To Be Determined	TBD<<		
	Select Surface Finish	>>To Be Determined	TBD<<		
	Worksurface Edge Color	>>To Be Determined	TBD<<		
	Frame Grommet Color	>>To Be Determined	TBD<<		
	Desk Color	>>To Be Determined	TBD<<		
	<b>Price Description: Standard Delivered</b>				
2.26	TSS30-74P	1	\$195.84	\$195.84	(?)
	True Stand-Up Hgt Transaction 30",74P Edge				
	Worksurface Grommet Color	>>To Be Determined	TBD<<		
	Select Surface Finish	>>To Be Determined	TBD<<		
	Worksurface Edge Color	>>To Be Determined	TBD<<		
	Desk Color	>>To Be Determined	TBD<<		
	<b>Price Description: Standard Delivered</b>				
2.27	TSS48-74P	1	\$214.08	\$214.08	(?)
	True Stand-Up Hgt Transaction 48",74P Edge				
	Worksurface Grommet Color	>>To Be Determined	TBD<<		
	Select Surface Finish	>>To Be Determined	TBD<<		
	Worksurface Edge Color	>>To Be Determined	TBD<<		
	Desk Color	>>To Be Determined	TBD<<		
	<b>Price Description: Standard Delivered</b>				
2.28	TSS72-74P	1	\$234.72	\$234.72	(?)
	True Stand-Up Hgt Transaction 72",74P Edge				
	Worksurface Grommet Color	>>To Be Determined	TBD<<		
	Select Surface Finish	>>To Be Determined	TBD<<		
	Worksurface Edge Color	>>To Be Determined	TBD<<		
	Desk Color	>>To Be Determined	TBD<<		
	<b>Price Description: Standard Delivered</b>				
Description				WorkGroup Product Subtotal	\$11,122.56
101 ADMIN - TRUE					
				Product SubTotal:	\$11,122.56
				Delivery and Installation	\$1,450.00
				Estimated Sales Tax	\$1,100.10
				Quote Total:	\$13,672.66



True Desking System. A true combination of power and productivity.

- Flexible form
- Powerful function
- Dynamic style



■ A truly complete desking system.



## **True™ Desking System:**

**Furniture that addresses the real truth about everyday workplace needs.**

**True flexibility. Modular design allows for easy layout and reconfiguration.**

**True style. A fully customizable color palette perfectly matches or, if you let it, sets the style for the rest of your workspace system.**

**True power. Integrated rigid power and intelligent cable management are the keys to a powerful performance.**





■ True desking will set your office free.



Efficient office design is a fine art — and True desking is a masterpiece. After all, this innovative system seamlessly fuses contemporary and classic styles. It's also full featured, freestanding and conveniently modular. Perfect wherever you put it. From executive offices to junior workspaces, this is one desking system uniquely designed to fit in and look good. You can easily install and reconfigure this system precisely to meet your growing company needs. (Without having to repair walls as you go along.) And it has an uncanny knack for streamlining space, too. Truly, an ideal system for any office environment.

The balance of power.

When it comes to powering up your workstation, True desking offers a perfect balance of power and panache. Forget about the unseemly tangle of wires. Stanchions provide power and data access to connections at desk height, while keeping cords hidden. Practical and inconspicuous. Free from wall hanging components. Not only does True desking look good, it also gives you some amazing performance options.

**Desks:** Pearl Silver laminate with Black PVC edge, powder coated Bronze Metallic. Pallas® Shorthand Ballpoint privacy screens.

**Storage:** Balance® Overhead with Pearl Silver laminate door, Bronze Metallic with Light Tone trim.

**Seating:** Olympia™ seating with Pallas Savoy Parquet upholstery, Black mesh, Chrome frame. Torsion® Four Leg chairs with Pallas Savoy Parquet upholstery, Black poly, Chrome frame.



■ The amazing dynamics of dynamic furniture.



In this ever-changing work environment, you need furniture that's as flexible as the people in your organization. You can be comfortable knowing that as your business grows, True desking grows with it. A multitude of different shapes, screens, colors, laminates and edges allow you to keep adding to your work center as necessary. KI will even custom color match your system for free. The possibilities are endless.

Keep your options open.

Whatever you're looking for, there's nothing KI can't handle. Options like upholstered or translucent privacy screens and partial or full modesty panels make True desking an ideal source of collaborative power, while still offering autonomy. Transition end panels remove obstacles that impede movement between workspaces. Better yet, you won't have to worry about costly downtime. Non-handed parts allow for easy reconfiguration. So you define your space without the hassle of module boundaries. It's almost too easy.

More space for your place.

True desking integrates well with WireWorks® to fit more people and productivity into the same work area. That means management gets to make the most of office real estate by eliminating the "dead zone" in the corners of traditional cubes. And employees find themselves in an easy going work environment. You can also blend components from other KI furnishings, like Balance overhead storage, for the ultimate in design freedom. The best of all KI worlds collide for optimal results.

**Desks:** Monticello Maple laminate with Light Tone knife edge, powder coated Light Tone, frosted acrylic privacy screens.  
**Panels:** WireWorks tiles, Pallas Open Playing Field Hnd. Bluff, Black trim.  
**Storage:** Balance Overhead with Monticello Maple door, Light Tone. 700 Series® radius pedestal, Light Tone.  
**Seating:** Engage® seating with Pallas Zephyr Amethyst Straw upholstery, Warm Grey frame.



■ **Make a powerful change.**

When it comes to versatility and power needs, True desking has it all. The system twists and turns to maximize the available office real estate. Modesty panels are made to muffle sounds. Your choice of acrylic, fabric or other material makes low privacy screens a stylish way to establish personal space — yet also encourage collaboration more than solitary walls. And high privacy screens can mount to the back of the worksurface to provide standing-height privacy. Did we mention this system is always changing and configuring to meet your needs?

Merge for more.

With its integrated rigid wireway, True desking is the perfect model of technological savvy. It helps keep productivity high and installation costs low. You can easily run data and manage wires from desk to desk with a built-in trough before the top is installed. (Now that's forward-thinking.) The 10-wire electrical system allows four- or six-circuit configurations. Want more functionality? Choose from a wide range of add-on worksurfaces to boost functionality.



**Desks:** Grasshopper powder coated MDF with slope thick edge, powder coated Eggshell, translucent trim, frosted acrylic privacy screens.  
**Storage:** 700 Series pedestal, Eggshell  
**Seating:** Engage seating with Pallas Savoy Obsidian upholstery, Warm Grey frame.

■ Endless power and possibilities.

