



complementary**learning**

OAKLAND UNIFIED SCHOOL DISTRICT



Teaching & Learning
Committee

May 18, 2009

Summer Learning Programs 2009



Objectives

- 1) Rationale for Summer Learning
- 2) Overview of Summer Programs
- 3) Provide Summer Infrastructure
- 4) Review of Funding and Revenue
- 5) Curriculum & Assessment

What the Research Says



complementarylearning

OAKLAND UNIFIED SCHOOL DISTRICT

- **Most students lose about 2 months of grade-level equivalency in mathematical computational skills over the summer months. Low-income students also lose more than 2 months in reading achievement, while their middle-class peers make slight gains. (Cooper, 1996)**

- **2/3 of the 9th grade academic achievement gap between dis-advantaged peers and their more advantaged peers can be explained by what happens over the summer during the elementary school years.
(Alexander, Entwisle and Olson, 2007)**

Overview of Summer Programs



complementarylearning

OAKLAND UNIFIED SCHOOL DISTRICT

Academic Recovery (1200 students)

Fremont Federation & Oakland Tech

Algebra Academy (380/160 students)

**Frick-Explore/Madison/Root-CCPA/Claremont/Brewer
Roosevelt/United For Success/Cole-West Oakland Middle
Oakland Tech/Fremont Federation**

Bridge Programs(120/60 students)

Bret Harte/Mandela

ELEV8 Summer Transition Programs (265 students)

**Cole-West Oakland Middle/Madison/Roosevelt
Roots-CPAA/United For Success-Peralta Creek**

Overview of Summer Programs



complementarylearning

OAKLAND UNIFIED SCHOOL DISTRICT

GATE Program (140 students)

Sequoia

Performing Arts Program (250 students)

Glenview

Pre-Collegiate Academy (100 students)

Merritt College

Programs for Exceptional Children (500 students)

Emerson, Franklin, Glenview, Korematsu, MLK, Maxwell Park, Tilden, Brewer, Oakland Tech

Summer Pre-K Camp (80 students)

Franklin, Greenleaf, LaFayette, Maxwell Park
Garfield, Melrose

Overview of Summer Programs



complementarylearning
OAKLAND UNIFIED SCHOOL DISTRICT

Summer Intervention Programs (5,500 students)

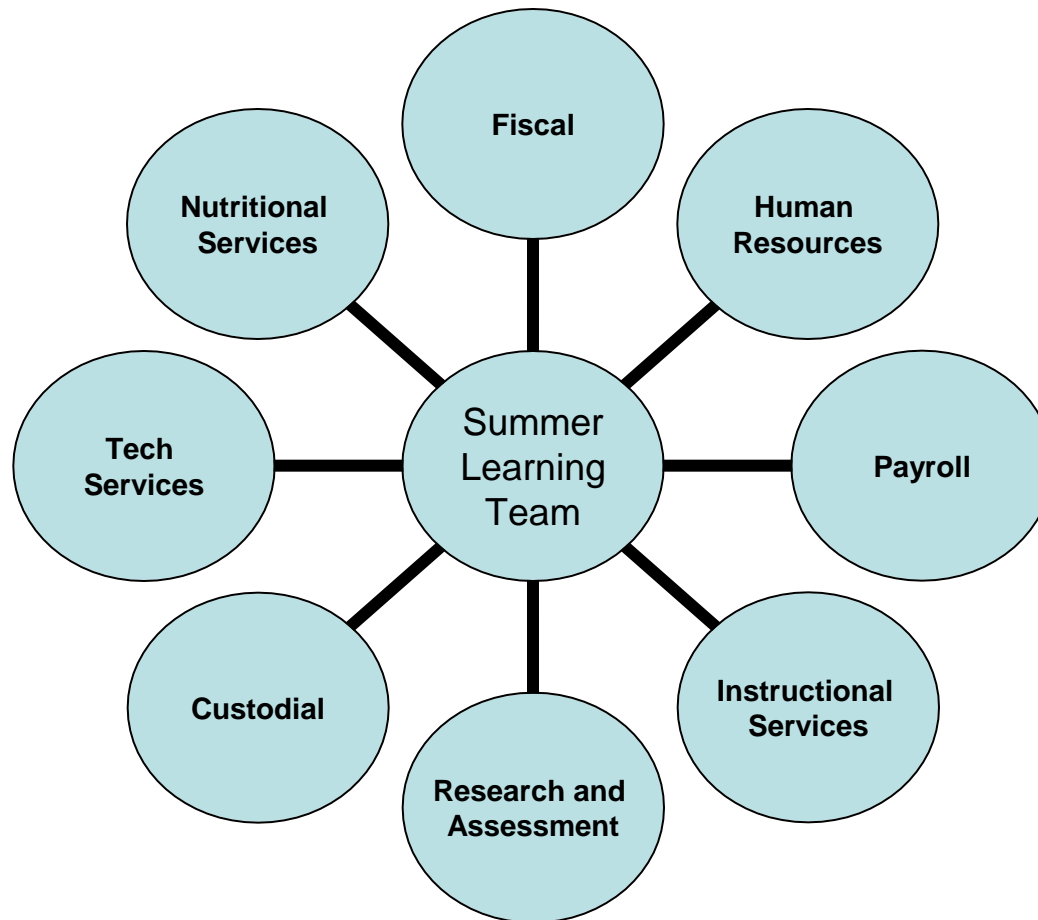
Elementary			Middle	High School
Acorn	Grass Valley	Marshall	Bret Harte	CBITS
Allendale	Greenleaf*	Martin Luther King	Eda Brewer	Leadership Prep
Ascend	Hoover	Maxwell Park	Claremont	CPAA
Bridges	Horace Mann	New Highland	CCPA	Life Academy
Brookfield	Howard	Parker	Elmhurst Community	Oakland High*
Burckhalter	International Community	Peralta	Explore	Skyline*
Carl Munck Community United	Kaiser Collaborative*	Piedmont Ave. Place	Frick	YES
East Oakland Pride	La Escuelita	REACH*	Madison	Street
Emerson	LaFayette	Redwood Heights*	Melrose Leadership	Bunche
Encompass	Lakeview	RISE	Montera*	Dewey
Esperanza	Laurel*	Sankofa	Roosevelt	Rudsdale
Franklin	Lazear*	Santa Fe	Roots	Independent Study
Fred Korematsu	Learning Without Limits	Sequoia*	United For Success	
Fruitvale	Lincoln	Sobrante Park*	Urban Promise	
Futures	Manzanita Community	Think College Now	Westlake	
Garfield	Manzanita SEED*			
Global Family	Markham			

Infrastructure of Summer Programs



complementarylearning

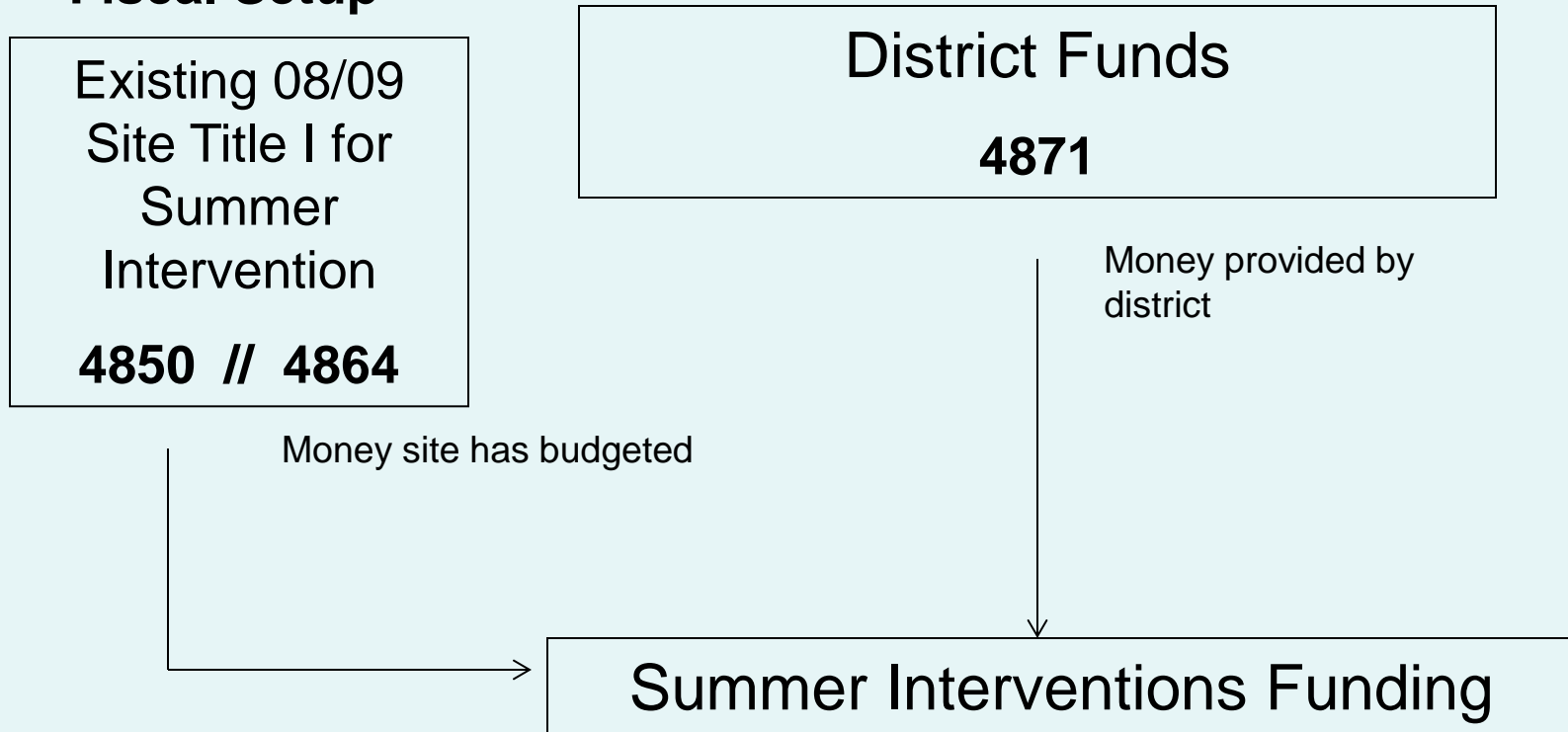
OAKLAND UNIFIED SCHOOL DISTRICT



Funding Picture for Summer Interventions



- Fiscal Setup**



Positive Hourly Attendance, 2008



complementarylearning

OAKLAND UNIFIED SCHOOL DISTRICT

Academic Recovery (Core Instruction/\$2.00 per hr.)

89,862 hrs = \$179,724

Summer Intervention (Remedial Instruction Gr. 7 – 12/\$4.28)

107,823 hrs = \$461,482

Summer Intervention (Low CST Score Gr. K – 6/\$3.68)

150,019 hrs = \$552,069

Curriculum and Assessment



complementarylearning

OAKLAND UNIFIED SCHOOL DISTRICT

CURRICULUM FOCUS:

- **2 - 3 identified power standards at each grade level in Math and ELA**

CURRICULUM SUPPORT:

- **Pacing Guides for Si Swun and Open Court Intervention materials**
- **Support also provided for Kaleidoscope and Voyageur Intervention programs**
- **Si Swun Expansion at middle grades with PD and coaching**
- **Algebra Academy providing curriculum and PD to staff with weekly PLC meetings**
- **ELA guides on essential standards and intervention support, along with PD**
- **CAHSEE focus at the high school level**

ASSESSMENT SUPPORT:

- **Aligned pre and post assessments at all grade levels using Edusoft**