



**OAKLAND UNIFIED
SCHOOL DISTRICT**

Community Schools, Thriving Students

Early Learning Hub Expansion Proposal



Presented by Christie Herrera

May 2021- Updated

www.ousd.org



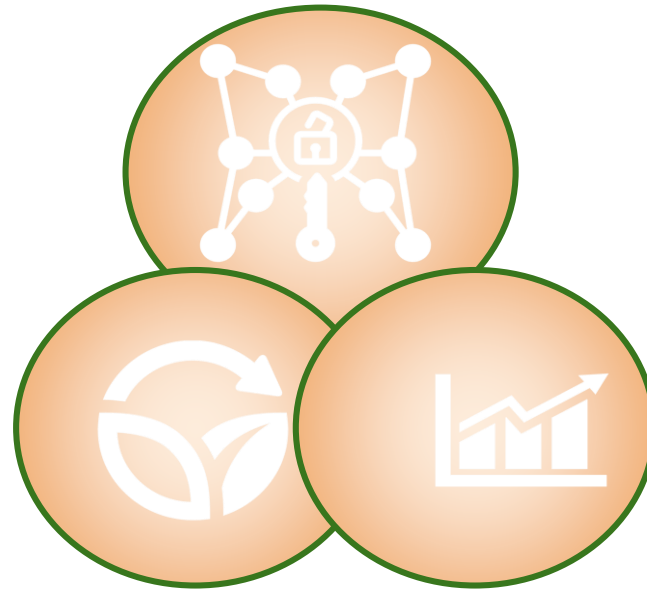
@OUSDnews

Ask of the Board

- Approve Resolution No. 2021-0160 - Opening an Early Learning Hub at the Former Kaiser Elementary School Campus

Citywide Plan Priorities

Equity



Sustainability

Quality

Vision for Early Learning & Inclusive Early Education Expansion Program

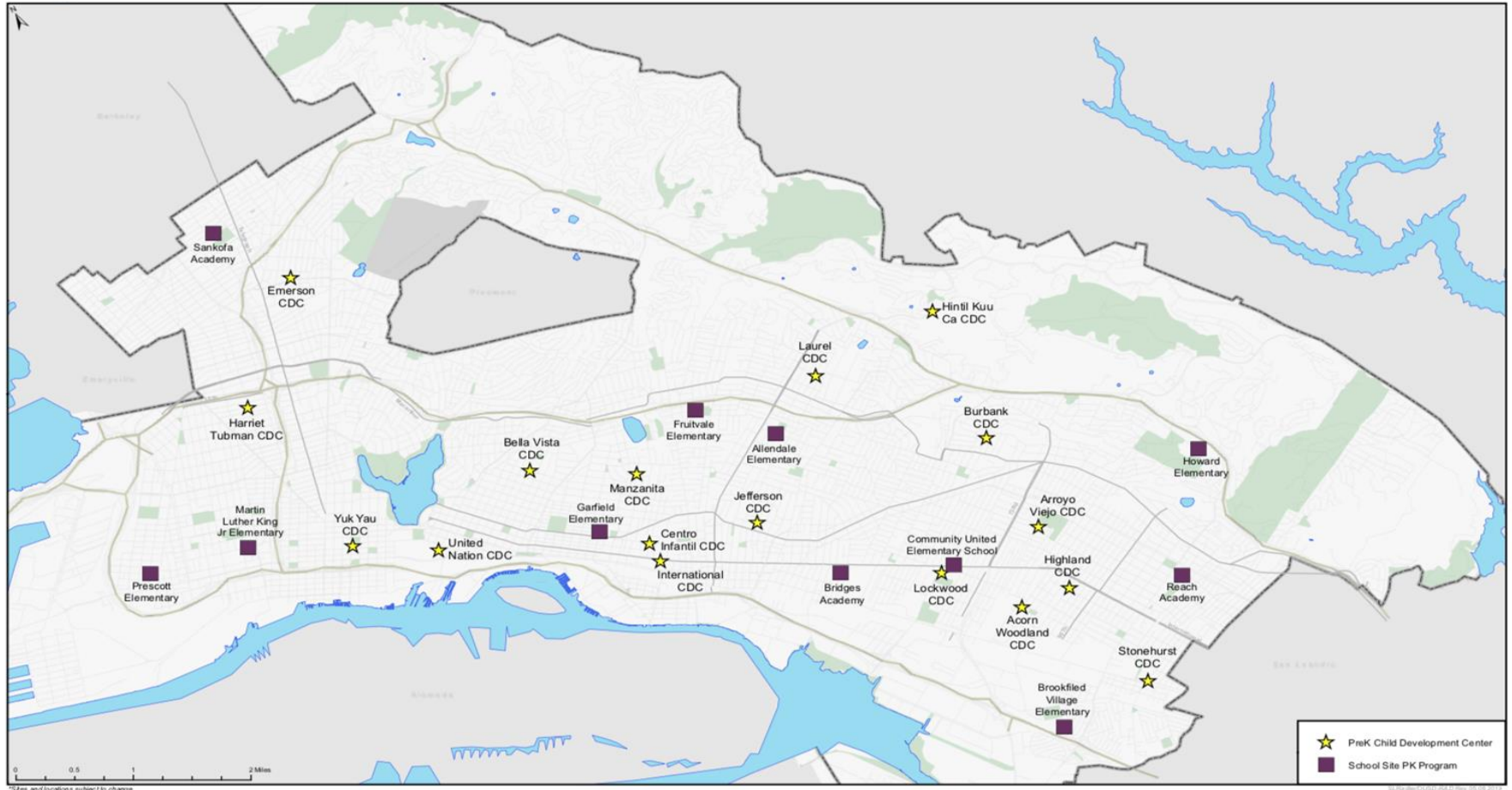
The ECE program strives to build a solid foundation of success for all children and their families. We believe early childhood education is a catalyst to high student achievement.



The purpose of the [IEEEP](#) funding is to increase access to inclusive early learning and care (ELC) programs for children with disabilities, including children with severe disabilities; and to fund the cost to the California Department of Education (CDE) of conducting an evaluation of the IEEEP.



Oakland Unified School District Preschool Programs



A Vision for Expanding Early Learning Programs

Transitional Kinder Programs

- 46 Classrooms
- Governor's May Revise - potential expansion of TK Programs in the coming years

Preschool Programs

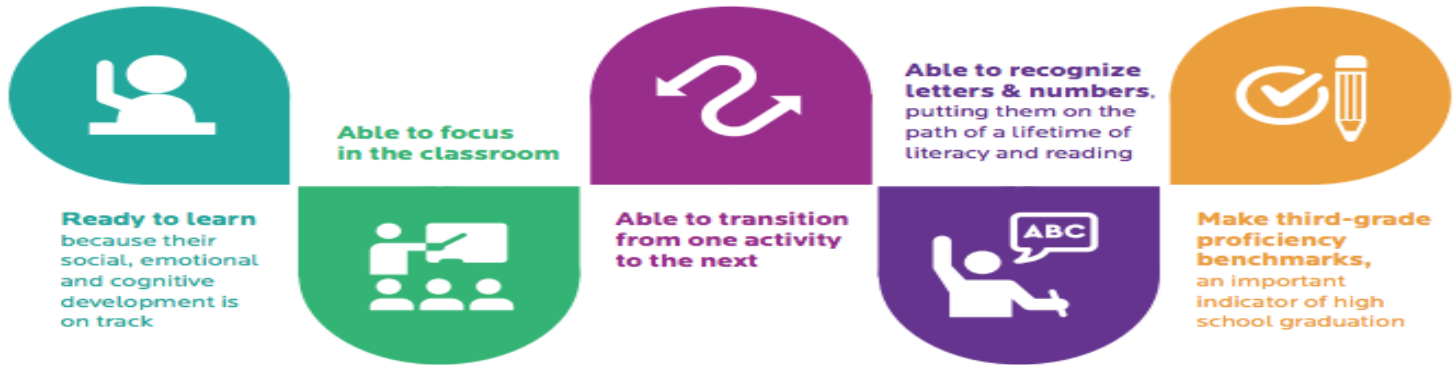
- Part Day Preschool Programs (48 Classrooms, 72 students on the waitlists @ Emerson and Sankofa)
- Full Day Preschool Programs 33 Classrooms, 31 of students on the waitlists
- School Age Classrooms (9 Classrooms)

Early Learning Hubs

- Burbank Early Learning Hub
- Increase to 2-3 more Hubs in the next 5 years
- Kaiser Proposal for 2022-2023 school year opening

Why Early Learning Hubs?

Early Learning Hubs create supportive systems that are easy for families to navigate by increasing access to infant and toddler programs, enrollment in quality preschools, inclusion services and improved quality of programs by supporting early learning educators in one space. This leads to Kindergarten Readiness for our youngest learners. We do this in partnership with our families, the community, and schools to come together to support student achievement both in school and in the Oakland community.



Early learning means children grow and thrive.

Goals and Outcomes of Early Learning Hubs

- OUSD and City of Oakland Community partnerships
- Pre-Kindergarten Funding Resources
- Family Support Services
- Informal and Formal Care Playgroups
- Partnership with Informal Care Providers
- Supportive governance structure
- Response to quality in City-Wide Plan- *students accessing services earlier*

Goals and Outcomes of Early Learning Hubs

- Create more general Ed slots @ Burbank
- Offer SPED Services in Early Learning Hubs
- Partner with programs who offer Infant and Toddler Services
- More locations for SPED PK services
- DX Center location for families in North/West
- Sliding Scale Based PK Services
- Facilities Monies through IEEEP grant (500K-1.1M)

Travel Data & Waitlist Numbers

Travel Data

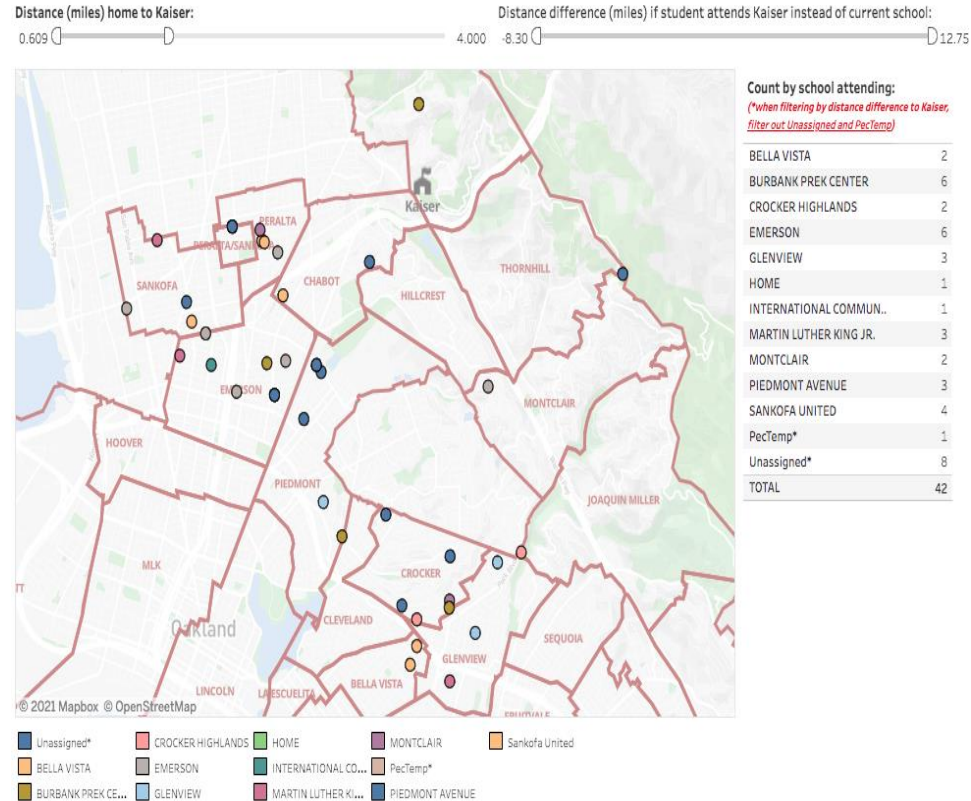
- ♥ 23 Children would travel > 1 mile to Kaiser then from current school assigned
- ♥ 42 Children would travel > 3 miles from home to Kaiser

Waitlist Numbers

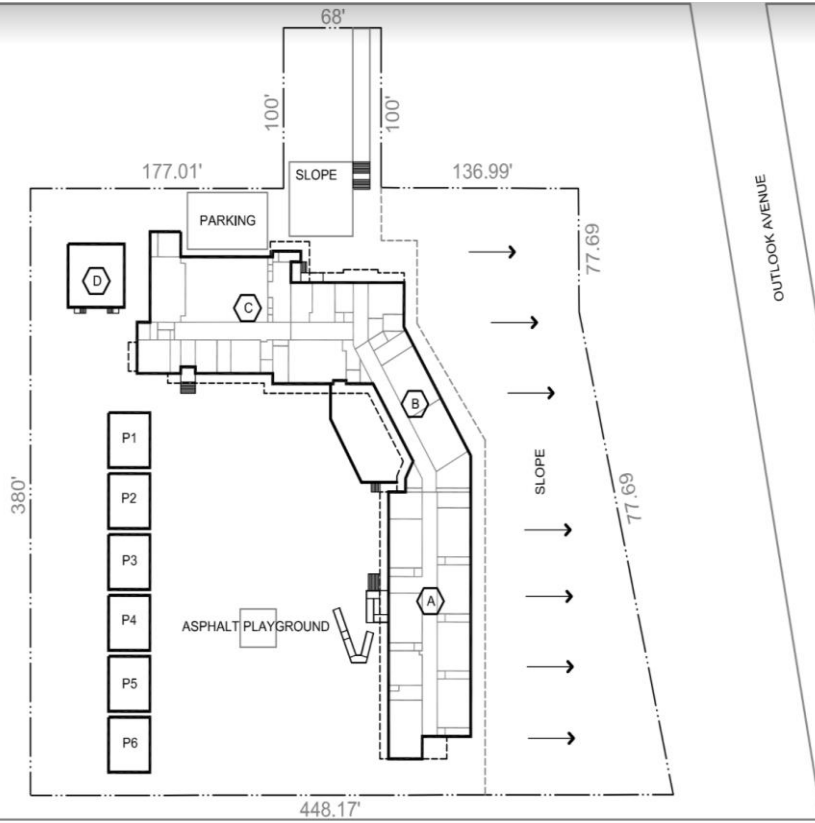
Emerson CDC: **47**

Sankofa CDC: **25**

MLK CDC: **13**



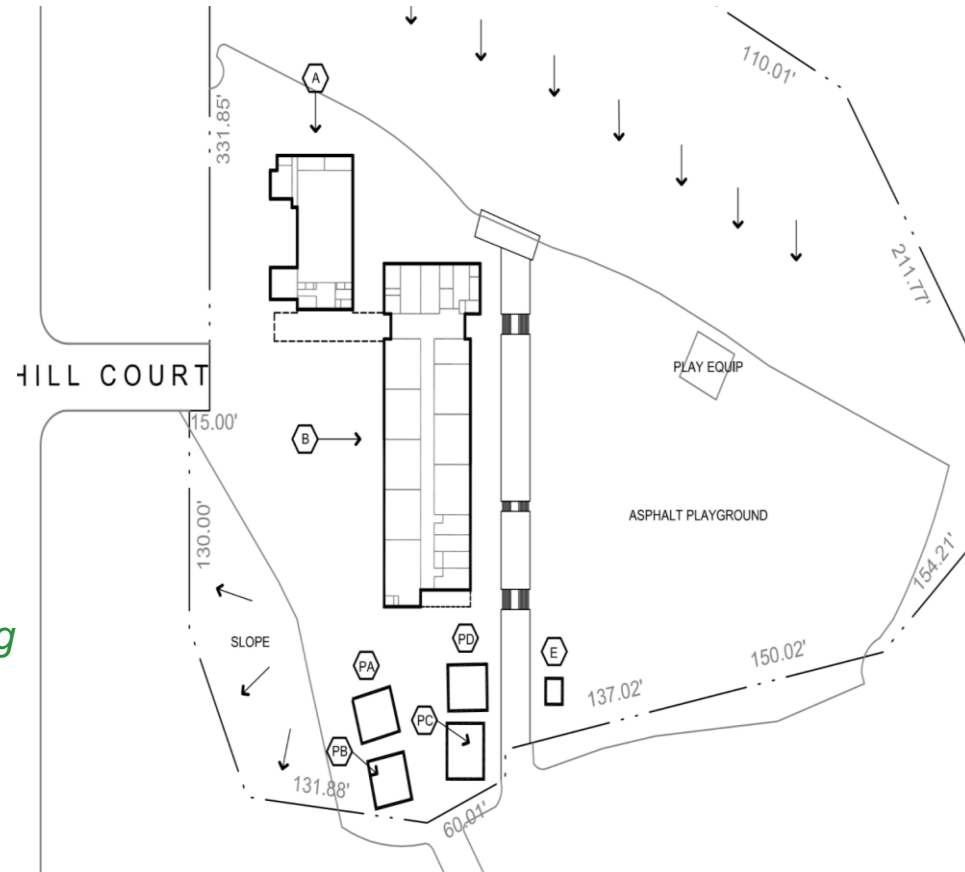
Burbank Proposed Map



- Move 4 SDCs to Kaiser Elementary
- Add 3 Head Start Programs
- 1 Infant/Toddler Classroom
- Increase Inclusion by 60 seats
- Move part of the DX Center to Kaiser to families in the North/West region do not need to travel so far.

Kaiser Proposed Map

- 4 PreK OUSD Special Day Classes *(10-20 children per class depending on new COVID regulations)*
- 4 OUSD Preschool Classes *(16-24 children per class depending on new COVID regulations)*
- 2 Oakland Community Preschool Classes *(16-24 children per class depending on new COVID regulations)*
- 1 Infant Class *(4-6 children depending on new COVID regulations)*
- 1 Toddler Class *(8-10 children depending on new COVID regulations)*
- Diagnostic Center Services
- Playgroups and parent workshops classroom space



Cost Analysis

♥ Facilities Upgrades and PreK ADA Compliance: Funding can be used by a Local Education Agency (LEA) for facility repairs and renovations that will assist children with disabilities, including children with severe disabilities, in increasing access to inclusive ELC programs. 500K-1.1M

♥ Sliding scale options for families for subsidized and unsubsidized seats

♥ Partnership with Community Based Partners for Infant and Toddler seats

♥ Full Day State PK Classrooms generates \$241,000 per year

Ask of the Board

- Approve Resolution No. 2021-0160 - Opening an Early Learning Hub at the Former Kaiser Elementary School Campus