



Education *for* Change

# World Academy

K~3 Elementary

# Education for Change



Education *for* Change

## Mission

*Provide a superior public education to Oakland's **most underserved children** by creating a **system** of public schools that relentlessly focuses on the **continuous refinement** of **high quality instruction**.*

## Vision

*When we succeed in building a high performing system of public schools serving the most underserved students, we will make the changes necessary for success to be replicated across every urban public school.*

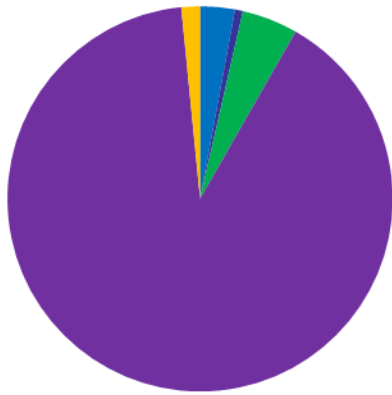
# Core Beliefs

- **Every child has a right to a high quality, free, public education.**
- **Every student can learn and succeed at high levels.**
- **The most important attribute of successful schools is the ability to have consistently high quality instruction in every classroom.**
- **Building a professional learning community is the key to our schools' success.**
- **Every child will succeed when a school is organized around a coherent, comprehensive, rigorous, standards-based curriculum, and school leaders make decisions about how to improve instruction based on data.**
- **The best measure of what we value is how we spend our time.**
- **Every adult within the school community - principals, teachers, staff, parents/guardians, and administrators - is responsible for student performance.**

# Students Served

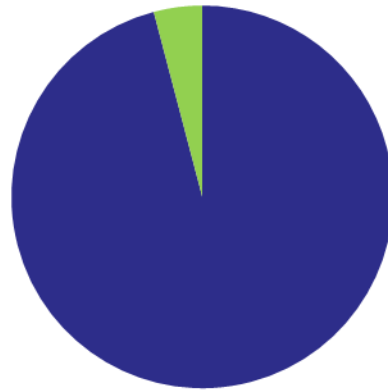
## 450 K-3

### Ethnicity



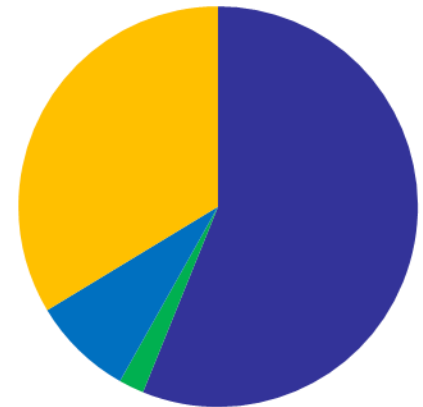
- African American
- American Indian or Alaska Native
- Asian
- Latino
- White

### Socioeconomic



- F/R Lunch
- Not F/R Lunch

### English Language Learners



- ELLs
- IFEP
- RFEP
- EO

# Theory of Action

**School organized around instruction: Every instructional minute is precious! Hire staff aligned to the mission!**  
**Parent involvement supports student achievement!**



**COLLABORATION! COHERENCE!**



**High  
Homogeneous  
Student  
Outcomes**

# Our Program

- **High Quality Teaching**
- **Extended Time for Collaboration and Learning**
  - Aligned afterschool programs
  - Extended staff work day for collaboration
- **Coherent,  
Comprehensive,  
Rigorous Standards-  
Based Curriculum**
- **Choice and  
Commitment**
- **Engagement of  
Community**



# Professional Development is the cornerstone of our model!

- Ongoing
- Focused
- Explicit
- Data-based
- Follow up observations and feedback from administrators and coaches



09-10 Focus Areas:

ELA: Fluency and Text Analysis

Math: Relational Thinking

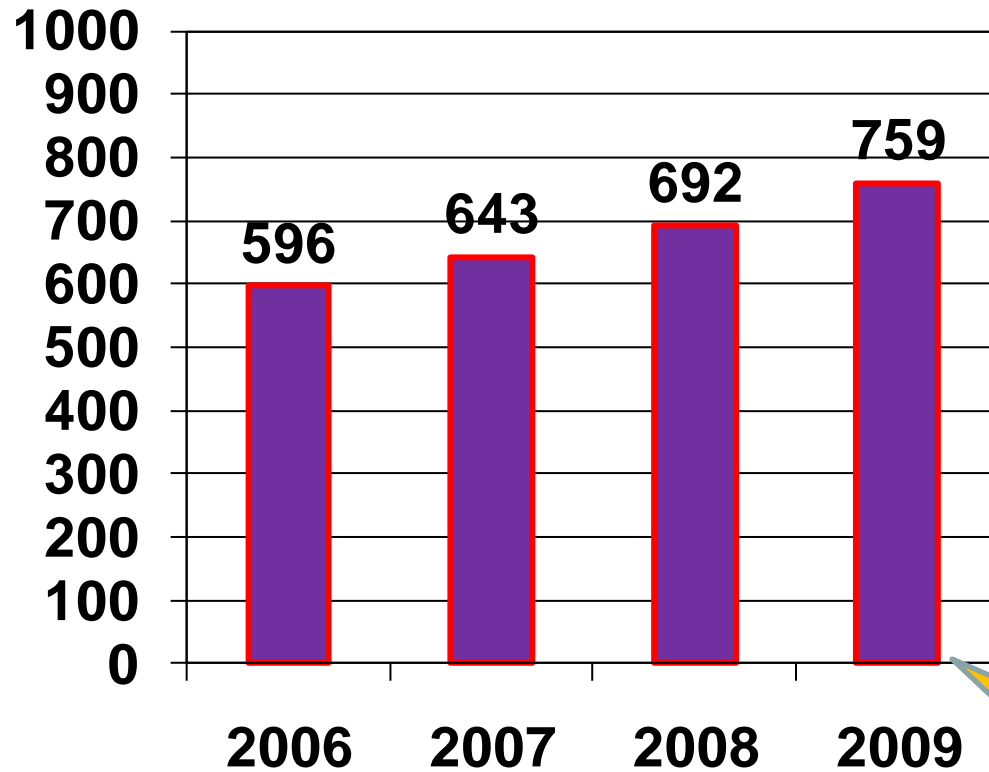
Student Engagement

# Professional Development: Building Content and Pedagogical Knowledge

- Examples of EFC professional development:
  - SB472 ELA and Math training with EFC staff training
  - Summer lab classroom: hands on application of ELA training
  - CSUEB Math content courses offered on site afterschool
  - Reading and Math Coaches
    - Specific, practice-based professional development
  - Weekly professional development followed up by observation
  - Additional days of professional development before and during the year
  - Weekly grade level meetings
  - Extended workday for collaboration
  - Literacy and Math Leadership Teams
    - Engaged in inquiry and additional professional development
  - Data Summits



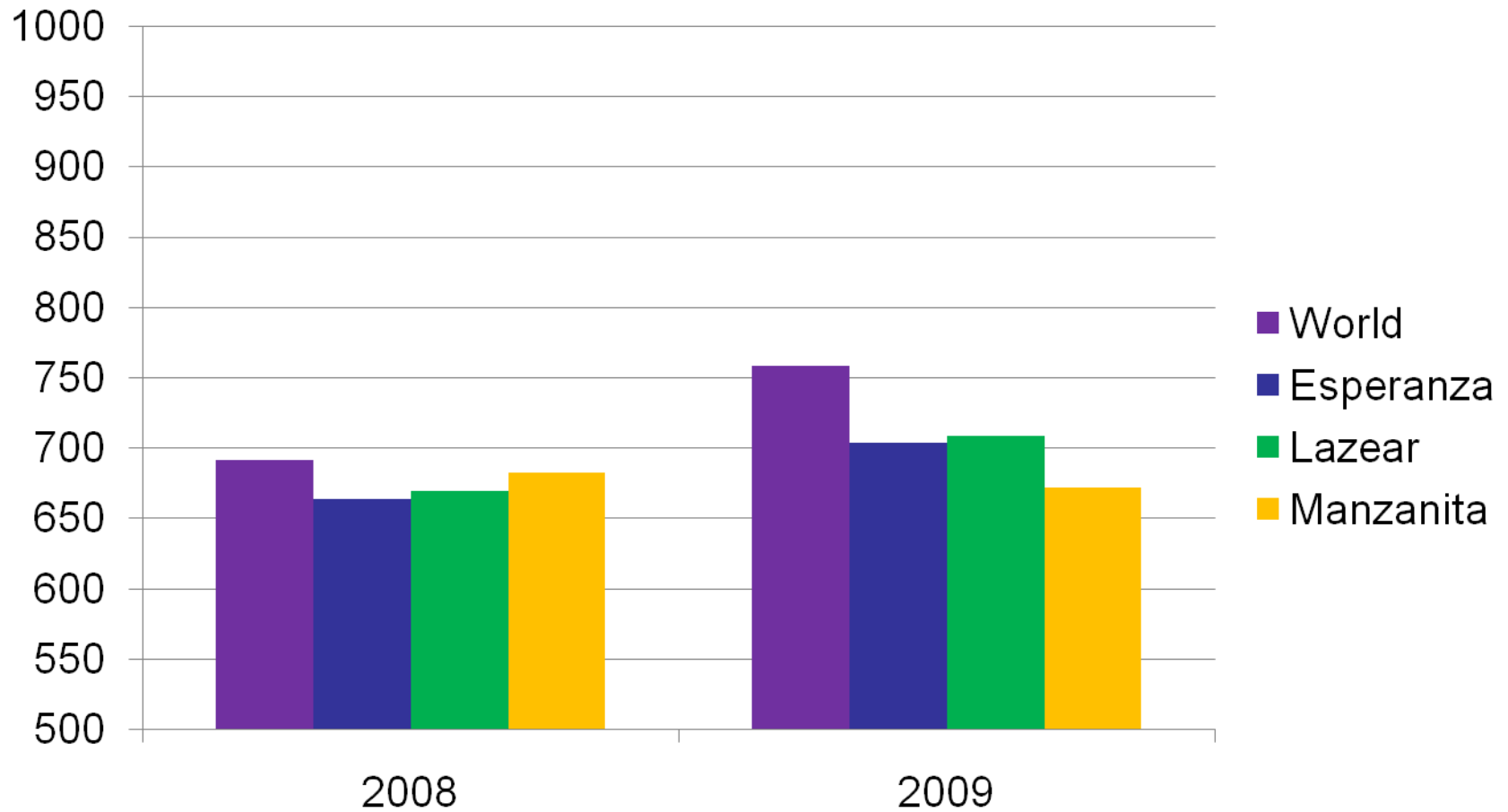
# API



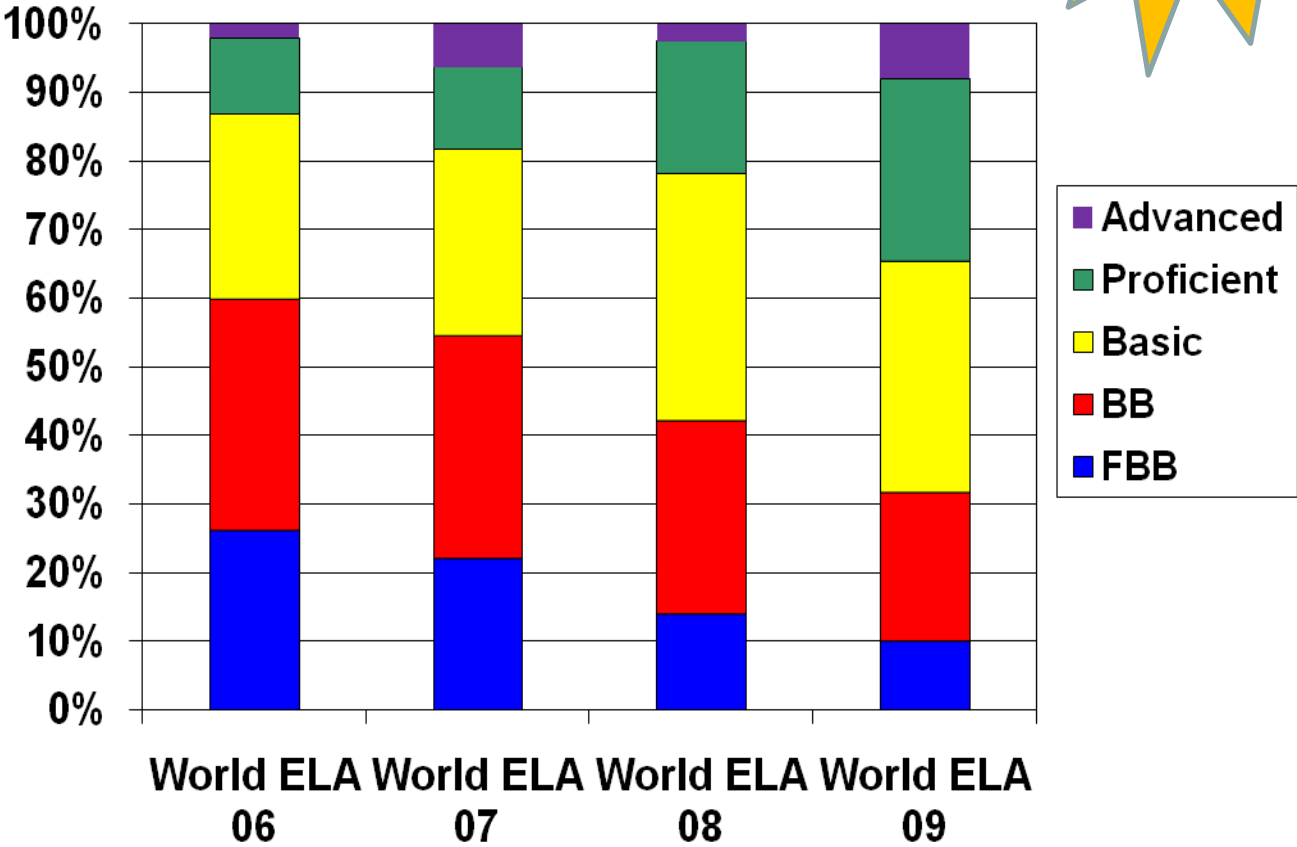
**163**  
points!

Met API  
Growth  
targets

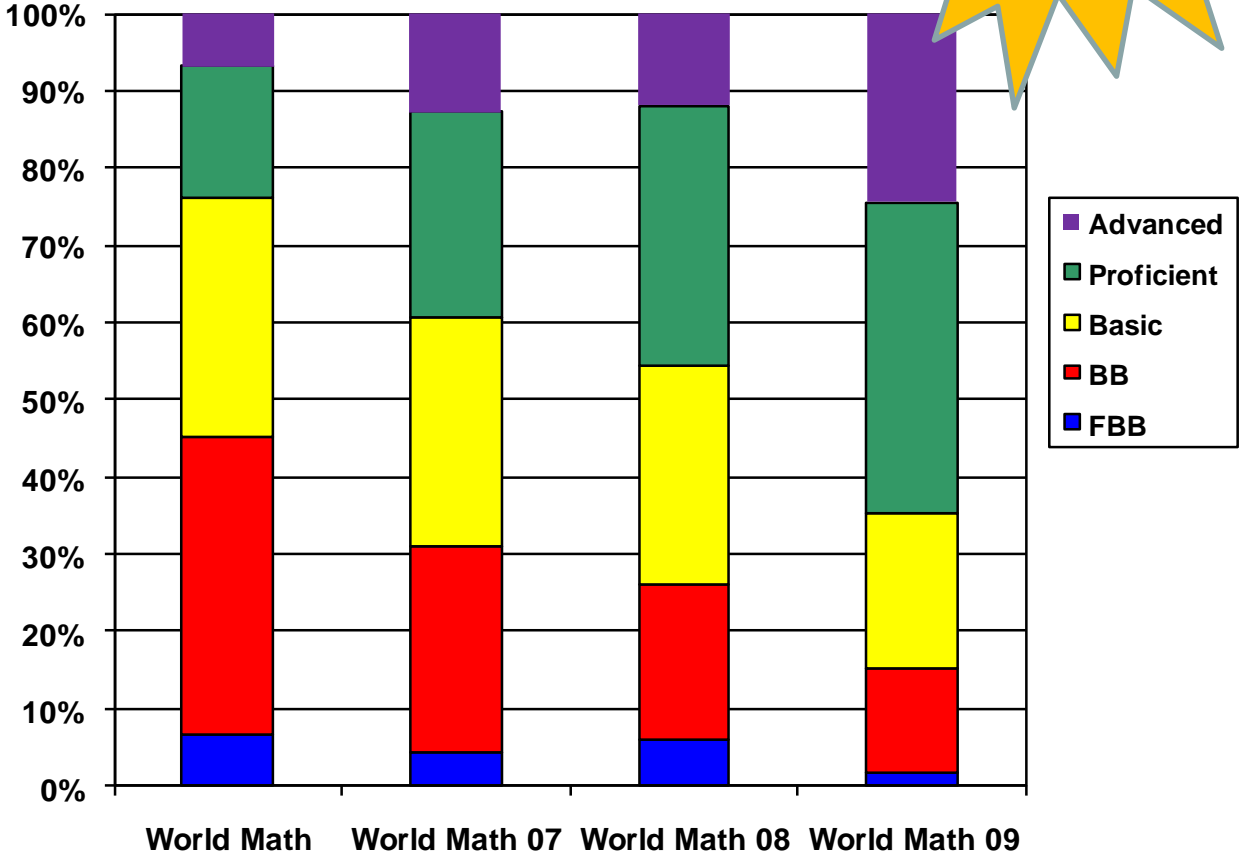
# API: Comparison



# World Academy: ELA



# World Academy: Math



# Parent Involvement

- **Parent Leadership Council**

- Parents provide meaningful input on school activities, quality of program, and safety
- Inform parents
- Discuss school issues and concerns

- **Parent Resource Center**

- Parent education classes (family communication skills, 0-5 parenting classes, nutrition, gang prevention,
- Family counseling services
- English classes for adults
- Food and clothing give away
- Medical assistance (La Clinica, etc)

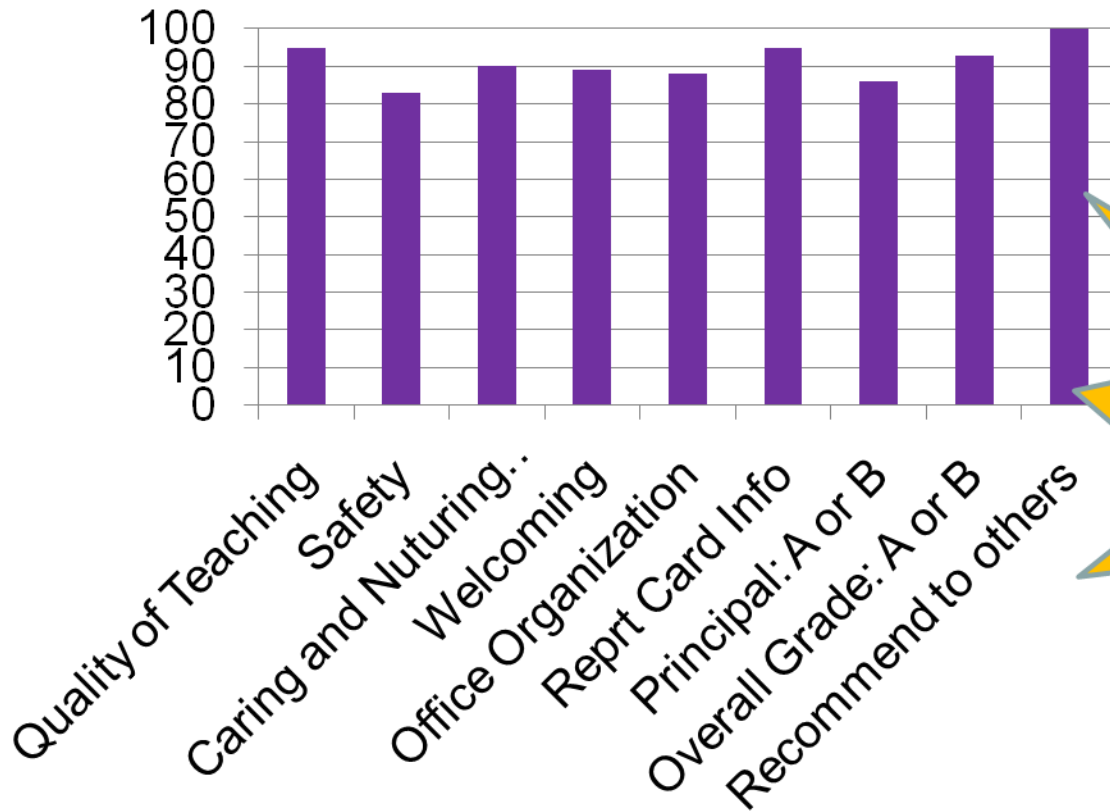
- **Monthly Grade Level Parent Meetings**

- Teaching parents about upcoming grade level curriculum and how they can support their child



# Winter 09 Parent Survey Data

Percent Strongly agree/ agree



**100% of parents  
attended Fall  
trimester parent  
conferences!**

# Community Partners

- East Bay Agency for Children
- Museum of Children's Art (MOCHA)
- Alameda County Office of Education
- California State University East Bay
- PlayWorks (Formerly Sports4Kids)
- La Clinica De La Raza
- Office Max
- Alameda Nutrition Program





# Accounting

Education for Change has followed the California State mandated requirements for annual audits. There have been four years of audits completed with no outstanding unresolved findings.



