

Superintendent Report

Superintendent, Dr. Kyla Johnson Trammell
May 24, 2023



**OAKLAND UNIFIED
SCHOOL DISTRICT**

Community Schools, Thriving Students

Our Vision

All OUSD students will find joy in their academic experience while graduating with the skills to ensure they are caring, competent, fully-informed, critical thinkers who are prepared for college, career, and community success.

Our Mission

Oakland Unified School District (OUSD) will build a Full Service Community District focused on high academic achievement while serving the whole child, eliminating inequity, and providing each child with excellent teachers, every day.



Superintendent Report Overview

School Highlights

Covid Update

Enrollment Update

Enrollment Stabilization

Attendance Update





Highlights from Schools

African American Student Excellence Celebrated



Initiative: Empowered Graduates

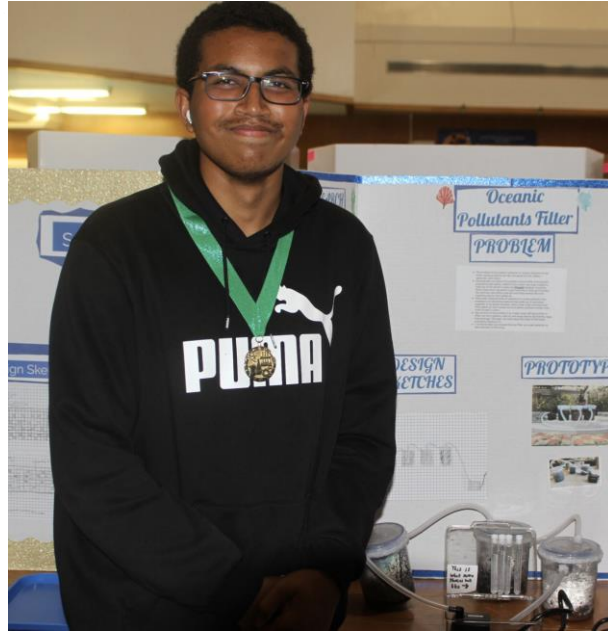
www.ousd.org/strategicplan

On Monday evening, May 15, Oakland came together to celebrate our young people at the 22nd Annual Oscar Wright Celebration of African American Academic Excellence Awards Ceremony, formerly called the African American Honor Roll.

This year, a record breaking crowd at Acts Full Gospel Church celebrated the 1,960 African American middle and high school students from across the district for making it on the Honor Roll with a GPA of 3.0 or higher the first semester of the 2022-23 school year.

The crowd included many of our Board of Education Directors, City Council members, officials from the Mayor's Office, and Oscar Wright, who shared the history of the event with the audience, as he approaches his 100th birthday.

OUSD Students Excel in STEM Programming



Initiative: Empowered Graduates

www.ousd.org/strategicplan

Our vision of powerful Oakland graduates is one in which students are empowered with the skills and knowledge they need to be successful, along with having a clear vision for themselves. This requires strengthening high school preparation and providing more opportunities for students to participate in hands-on learning and real world problem solving. Nothing exemplifies this concept more than our STEM programming.

Building on the rich 63-year tradition of the OUSD Science Fair, the inaugural **OUSD STEM Fair** was held on May 3. The event showcased some of the best science projects from students across our district, and dozens of families and community members engaged in hands-on activities with local STEM partners and enjoyed free food and music. We celebrate all participants and their achievement in math, computer science, engineering, environmental science & sustainable design, data science, robotics, and more.



Covid Update

COVID Update

California State of Emergency ended
on February 28, 2023.
National State of Emergency ends
on May 11, 2023.

Testing & Vaccines

- Regional testing hubs open
 - 1 hub open per day, in a different part of the city to remain as accessible as possible until May 25, 2023.
 - CDPH updated guidance to limit testing to rapid antigen only, not PCR
- At-home tests available for symptomatic/exposed staff & students at all school sites
 - CDPH updated guidance advises testing for higher risk situations (e.g. travel, exposure, symptoms), not for all students/staff before the return from break

Case Rates & Masking

- The community level of Covid-19 in Alameda County is Low based on cases and hospitalizations.
- OUSD follows CDPH and ACPHD aligned masking guidance to CDC, per Board Policy 2122-0091.
- High-quality masks, including N95, KN95, KF94, and surgical masks are provided at all District facilities.
- Starting March 1, classroom-level notifications are no longer issued about cases.
- Starting March 1, COVID-19 vaccinations are no longer required by the Oakland Public Education Fund for in-person volunteers or chaperones.



Enrollment Update

Enrollment Grade Span to Census Day (TK-12)

Grade Span	Projected Enrollment	Aeries Day-5 8/12/22	Actual Day-5 Count 8/12/22	Aeries Day-20 9/2/22	Actual Day-20 Count 9/2/22	Aeries Day-30 9/16/22	Aeries Day-35 9/23/22	Aeries Day-40 9/30/22	Aeries Census Day 10/5/22
General Ed Enrollment TK	740	633	675	698	681	700	704	707	709
General Ed Enrollment K-5	16,057	16,150	16,097	16,326	16,295	16,358	16,399	16,408	16,403
General Ed Enrollment 6-8	6,427	6,358	6,201	6,363	6,353	6,367	6,369	6,382	6,379
General Ed Enrollment 9-12	8,519	9,385	8,303	9,362	9,063	9,201	9,204	9,187	9,190
Total General Ed Enrollment TK-12	31,743	32,526	31,276	32,749	32,392	32,626	32,676	32,684	32,681
SDC Enrollment TK-12	1,695	1,468	1,421	1,450	1,370	1,438	1,438	1,429	1,450

Census Day 21-22: 34,428

Census Day 22-23: 34,118

-176 Students

The preliminary Census Day numbers are used to drive OUSD's projections for the 2022-23 school year. These numbers will fluctuate post-Census day and are certified in by the state in January.

Adopted Budget 22-23: 33,208

Enrollment Projections

Projections are the foundation of the District structure and drive district- and site-level decision making around budget, staffing, and program.

Projections

Budget

Base Staffing

Programs



School site projections in the 2/8/2023 Superintendent Report

Grade Span	Actual Census Day Counts from CALPADS					2018-19 to 2022-23	Projections	
	2018-19	2019-20	2020-21	2021-22	2022-23	4-Year Annualized Change	Projection 2023-24	Change 22-23 to 23-24
TK	602	559	529	584	758	39	959	201
K	3173	3128	2811	2887	2791	-96	2677	-114
1	3244	3180	3078	2837	2944	-75	2817	-127
2	3138	3152	3067	2880	2802	-84	2823	21
3	3112	3079	3060	2890	2830	-71	2712	-118
4	3095	3061	3036	2887	2817	-70	2749	-68
5	3134	3001	2961	2830	2825	-77	2683	-142
6	2276	2305	2365	2291	2248	-7	2191	-57
7	2421	2264	2314	2289	2253	-42	2236	-17
8	2350	2427	2294	2288	2241	-27	2256	15
9	2330	2511	2297	2341	2327	-1	2400	73
10	2466	2453	2545	2339	2426	-10	2451	25
11	2519	2405	2454	2444	2374	-36	2367	-7
12	2571	2559	2606	2645	2505	-17	2362	-143
Total	36431	36084	35417	34432	34141	-573	33683	-458

> 3% decrease

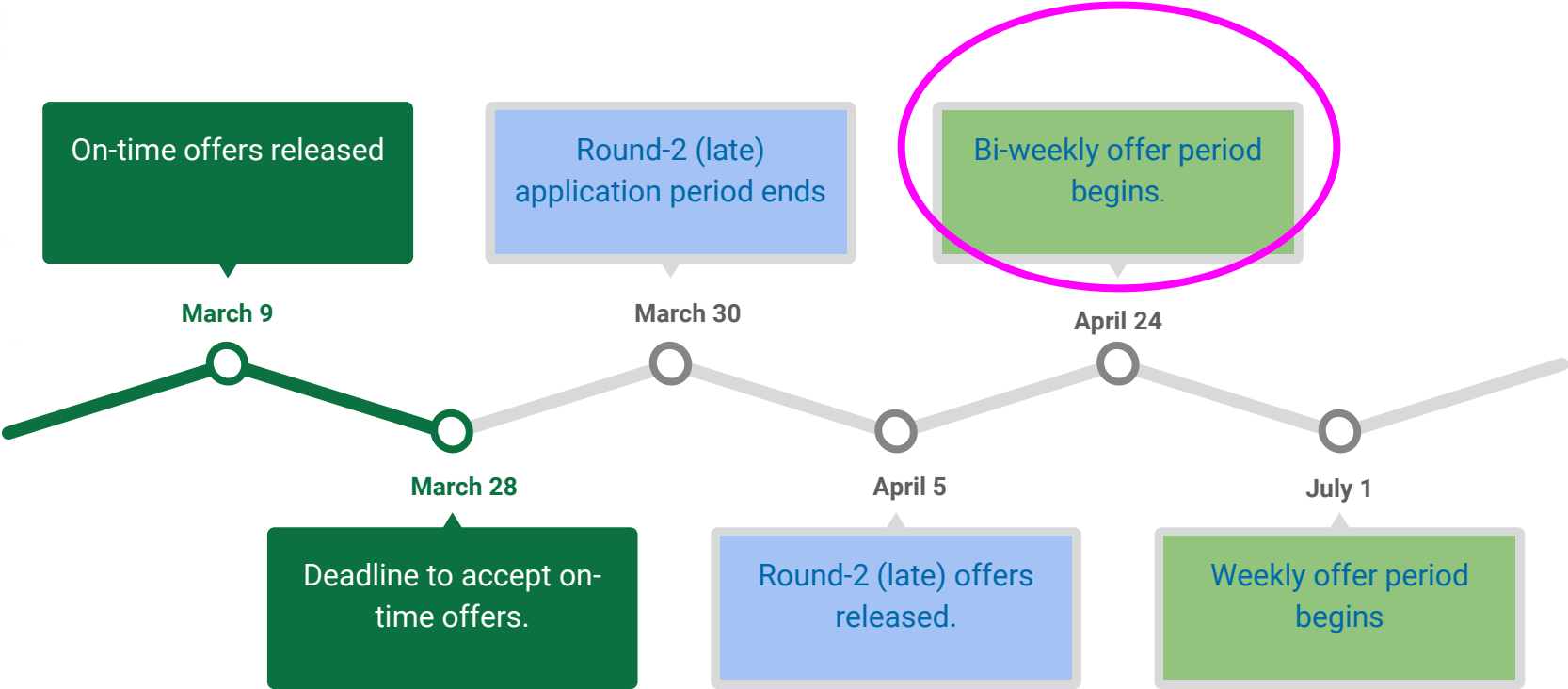
1% - 3% decrease

+ - 1% change

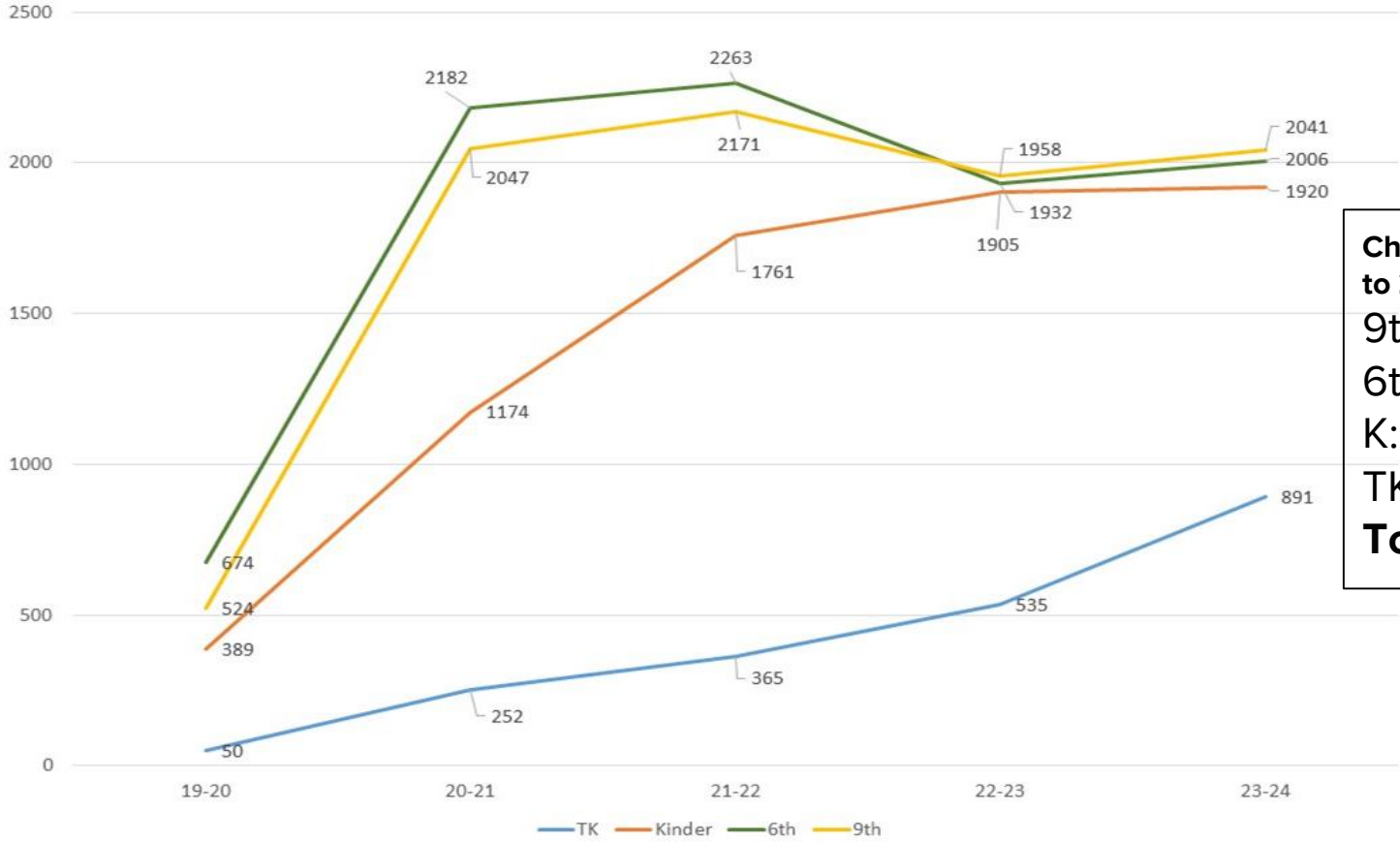
1% - 3% increase

> 3% increase

Enrollment Timeline



Historic On-time Transition Grade Applications



Change relative to 22-23:
 9th: **+83**
 6th: **+74**
 K: **+15**
 TK: **+356**
Total: +528

Grades TK, K, 6th and 9th

- **Ontime Enrollment Window closed on 2/10/2023**

Transition Grades	12/30/22	1/6/23	1/13/23	1/20/23	1/27/23	2/3/23	2/10/23*	Projections 23-24	% of Projection
TK	298	361	469	537	611	706	891	959	92.9%
K	686	820	1030	1175	1335	1541	1920	2677	71.7%
6th	774	846	1123	1300	1468	1607	2006	2191	91.6%
9th	646	741	1000	1180	1395	1585	2040	2400	85.0%

*The applications counts represent the number of applications submitted to OUSD Districtwide. This does **NOT** represent that OUSD has met its enrollment projections for 23-24. Application counts are a critical enrollment health benchmark. Once a family has accepted, enrolled, and attended school on the first day of class, the student will show up in OUSD's Fall enrollment counts. At this time, some schools have much fewer applications than projected seats offered at the school.

- **Data represents critical Transition Grades TK, K, 6th and 9th**
- **The 2nd Enrollment Window (late**

Transition Grades	On-time apps 2/10*	Late apps 2/17/23	Late apps 3/1/23	Late apps 4/5/23	Late apps 4/12/23	Late apps 4/19/23	Late apps 4/26/23	Late apps 5/3/23	Projections 23-24	% of Projection
TK	891	901	928	1015	1024	1044	1057	1063	959	111%
K	1920	1953	1999	2121	2176	2206	2231	2242	2677	84%
6th	2006	2040	2081	2220	2330	2364	2393	2417	2191	110%
9th	2040	2051	2084	2246	2316	2348	2380	2387	2400	99%

The applications counts represent the number of applications submitted to OUSD Districtwide. This does **NOT represent that OUSD has met its enrollment projections for 23-24. Application counts are a critical enrollment health benchmark. Once a family has accepted, enrolled, and attended school on the first day of class, the student will show up in OUSD's Fall enrollment counts. At this time, some schools have much fewer applications than projected seats offered at the school.*



Enrollment Stabilization

Satellite Offices

- 1) Established on December 5, 2022 at four locations across Oakland
- 2) Designed to provide additional in-person Enrollment support to the community
- 3) Open to any family from any school and new to OUSD families
- 4) Last week of service is **May 15** → will re-open in winter-23

SATELLITE OFFICE HOURS



School Site	Day	Times	Specific campus location
WOMS	Mondays	8:30-3:30	Family Resource Center, Building H
Elmhurst	Tuesdays	8:30-3:30	Family Resource Center, room 3000
ICS/ TCN	Thursdays	8:30-3:30	Gym/ Stage area
Havenscourt	Fridays	8:30-3:30	CCPA Family Resource Center

Ongoing Outreach

- 1) AC Transit ads
- 2) English language radio: 95.7
- 3) Spanish language radio 93.3
- 4) Targeted digital advertising
 - a) Facebook ads
 - b) Promoted IG posts
 - c) Enrollment video promotion





Attendance Update

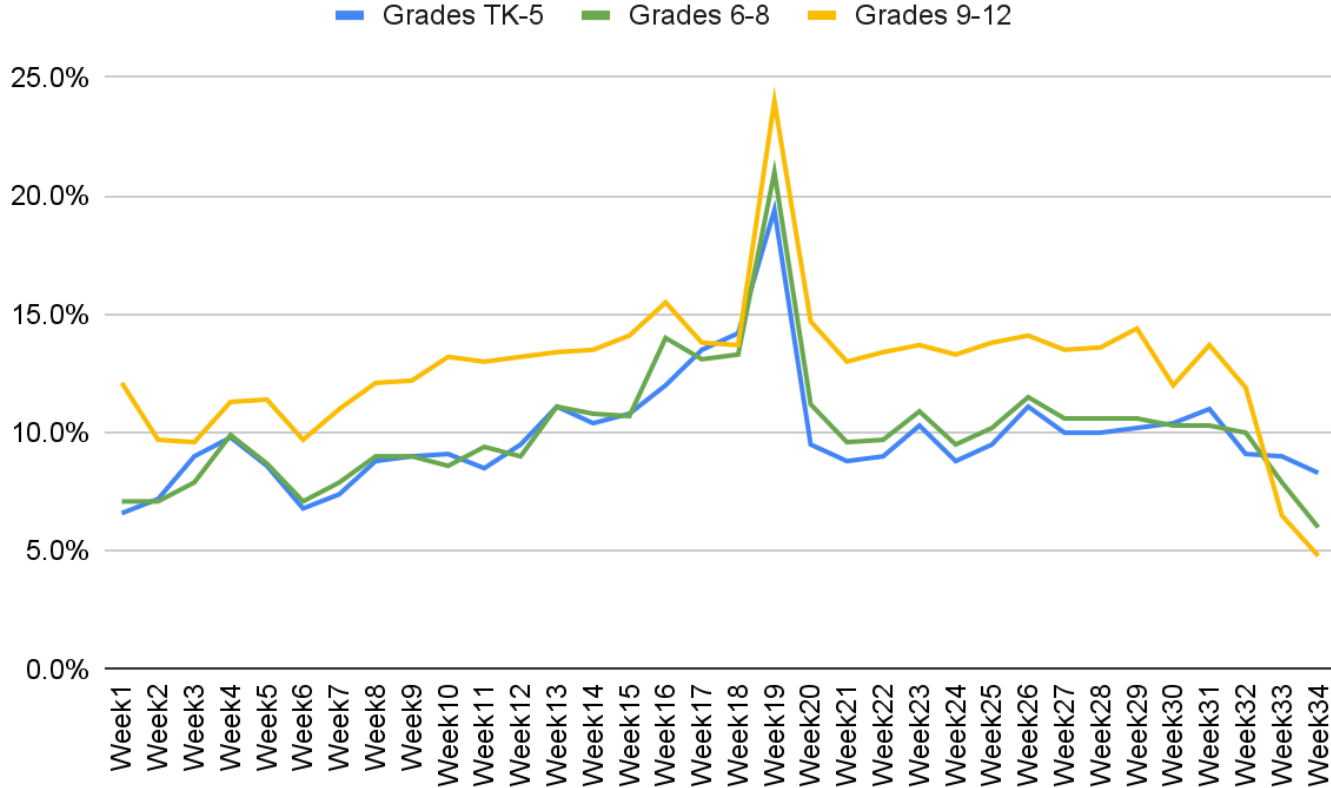
Overall Attendance Update* (Aug 8, 2022-May 3, 2023)

Grade level	All Students	ELL	Newcomer	SPED	Unhoused **	Foster	African American	Asian	Latino	White
Gr TK-5 (enrollment)	90% (17606)	90% (6481)	89% (1394)	87% (2841)	86% (446)	89% (43)	87% (3260)	95% (1849)	89% (7763)	93% (2489)
Gr 6-8 (enrollment)	90% (6585)	90% (1937)	91% (378)	87% (1161)	88% (267)	85% (26)	87% (1408)	94% (565)	90% (3297)	93% (653)
Gr 9-12 (enrollment)	87% (9237)	85% (2652)	85% (1243)	84% (1604)	82% (705)	77% (67)	85% (2125)	93% (990)	86% (4571)	92% (791)

*Sojourner Truth NOT included.

** Number of unhoused students is low at the beginning of the school year as data is still being entered into the system.

Weekly Attendance Rate (Aug 8, 2022-Apr 28, 2023)





Community Schools, Thriving Students



**OAKLAND UNIFIED
SCHOOL DISTRICT**
Community Schools, Thriving Students

www.ousd.org



@OUSDnews

1000 Broadway, Suite 300, Oakland, CA 94607