

2010 Truancy Task Force

Truancy Task Force Membership List:

Tony Smith, Superintendent, Oakland Unified School District
Noel Gallo, Board of Education Member
TBD, Board of Education Safety Committee Chair
Anthony Batts, Chief of Police, Oakland Police Department
Jean Quan, Councilmember, Oakland City Council
Teresa Drenick, Deputy District Attorney, Alameda County
Kitty Kelly Epstein, Education Advisor to Mayor Dellums, Mayor's Office
Nyeisha Dewitt, Oakland Natives Give Back
Mark Henderson, Department of Human Services
Toni Adams, Director, Student Programs & Services, Alameda County Office of Education
Dr. Relda Robertson-Beckley, Public Health Nurse, Alameda Public Health
Carel J. Duplessis, Chief of Police, Oakland Housing Authority
Sean Herron, Oakland Housing Authority
Jeff Baker, City Administrator's Office
Laura Moran, Chief Services Officer, Oakland Unified School District
Brad Stam, Chief Academic Officer, Oakland Unified School District
Pete Sarna, Chief of Police, Oakland Unified School District
Adrian Kirk, Director, Family & Community Office, Oakland Unified School District
Anne Okahara, Coordinator, Community Engagement, Oakland Unified School District
Angela Haick, Coordinator, Attend & Achieve, Oakland Unified School District
Raquel Jimenez, Student Engagement Specialist, Oakland Unified School District

Meeting Calendar:

Date/Time: February 9, 2010 3:00-5:00PM Location: Skyline High School 12250 Skyline Blvd Oakland, CA 94619	Date/Time: May 11, 2010 3:00-5:00PM Location: Oakland High 1023 MacArthur Blvd. Oakland, CA 94605
Date/Time: March 9, 2010 3:00-5:00PM Location: Castlemont Campus 8610 MacArthur Blvd Oakland, CA 94605	Date/Time: June 8, 2010 3:00-5:00PM Location: Fremont Federation Campus 4610 Foothill Blvd Oakland, CA 94601
Date/Time: April 13, 2010 3:00-5:00PM Location: Oakland Technical High School 4351 Broadway Oakland, CA 94611	



OAKLAND UNIFIED
SCHOOL DISTRICT

expect **Success**

SAFETY HOMERUN PROJECT

DISTRICT SAFETY TEAM MEMBERS

SAFETY HOMERUN PROJECT SPONSOR

Laura Moran - CSO

CO-PROJECT LEADS

Adrian Kirk – Family & Community Office / Pete Sarna – Police Services

TEAM MEMERS

- Bill Nownes – S&F
- Jackie Shonerd – IS
- Barbara Parker – Health Services
- Lisa Cole- Special Education
- Jan Pucetti – Legal
- Angela Haick – Attend & Achieve
- Gloria Beltran – Emergency Prep.

ADVISORY TEAM

Betty Olson-Jones – OEA / Joanna Lougin – UAOS
Teachers & Staff Members

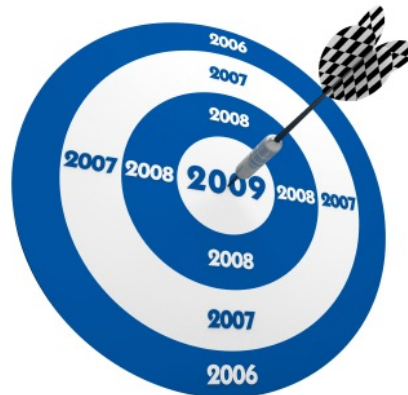
DISTRICT SAFETY TEAM RESPONSIBILITIES

- **School/ Site Safety Plan: The foundation for safety & preparedness**
- **Two overlapping accountability measures:**
 1. School Climate: Culture, Discipline, Truancy Reduction, Violence Prevention
 2. Safety : Campus Safety, Emergency Preparedness, Police & SSO Services , Legal, Risk Management, Facilities.



ACCOMPLISHMENTS 2008 – 2009

- School Safety Plans completed w/ support from State and Federal
- Safety Assessments completed for 30 schools with a focus on red schools.
- Crisis protocol updated and applied effectively with District Support team to high level crisis situations (e.g. Oakland Tech, Havenscourt Campus, H1N1).
- Updated and provided basic orientation for EOC for Executive team.



ACCOMPLISHMENTS 2008 – 2009

CONTINUED

- Built capacity of the OUSD police force, including hiring new Chief and Lieutenant.
- Conducted successful Attend and Achieve Campaign including 7 community events/ walks covering 10 schools and back to school rallies and provided site and central support for SART/ SARB/ DA Referrals with significant decrease in truancy in elementary and middle schools.
- Violence prevention curriculum and PD implemented including Second Step, Restorative Justice, Peer Mediation.
- Piloted GREAT training with OPD and OUSD Police and piloted Youth centered gang/ drop out prevention program with Meaningful Student Engagement unit of Family Community Office.



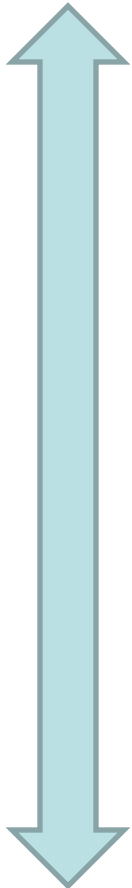
ACCOMPLISHMENTS 2008 – 2009

CONTINUED

- Successfully reshaped Measure Y RFP to implement new Juvenile Justice release, re-entry and support strategy to improve outcomes for 900 youth.
- Re-established a District Safety team focused on expanding and integrating support for sites as they build and implement site safety plans.



SCHOOL SAFETY PLAN ELEMENTS 2008 - 2009



1. School Data Assessment and Conclusions
2. School Safety Program with Goals/ Timelines
3. School Procedures for Complying with School Safety Laws
4. Child Abuse Reporting Procedures
5. Disaster/ Emergency/ Crisis Responses Procedures
6. Suspensions/ Expulsion Procedures
7. Teacher Notification of Dangerous Students
8. Discrimination and Harassment Policy
9. Dress Code
10. School's Safety and Orderly Environment
11. Visitor Access to School Campus
12. School Rules and Procedures for Discipline
13. Hate Crime Reporting Procedures and Policies
14. Code of Conduct Policy for Students

SCHOOL/SITE SAFETY PLANS: 2009 - 2010

- All site administrators must complete and submit their site safety plans by Friday, October 30, 2009. (State & Federal Submission)
- Sites must build an incident command team and form a school climate committee. (Incorporate into School Site Council Meetings)
- Site administrators shall ensure that members of their incident command team attend and complete all required training.
- All site administrators shall submit schedules detailing proposed earthquake and fire drills by October 30, 2009. (Emergency Preparedness Program Manager)



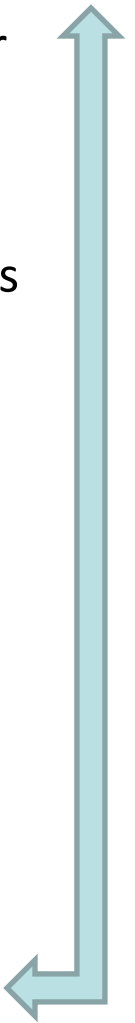
PROPOSED SAFETY HOME RUN GOALS 2009 - 2010

- Increase student, staff and family satisfaction with the safety of all of our sites which helps build a strong foundation for learning.
- Identify and prevent/ reduce violence on our campuses related to bullying, gangs, weapons and other challenges that distract students from learning.
- Increase attendance and reduce truancy to increase time on academics.
- Decrease suspensions overall and achieve the goals of our Voluntary Resolution Plan.
- Ensure that the entire District is prepared to respond effectively to all types of crisis situations, especially natural disasters and emergencies.



KEY STRATEGIES 2009 - 2010

- Expand and align the internal and external resources to best support site based safety plans and teams goals and ensure accountability for support to schools by each key service area.
- Ensure that each school has a well defined vision and plan for creating a positive school climate and is prepared to respond to crises and emergencies.
- Build the capacity of school climate and incident command teams so that they are prepared to implement their plans.
- Provide targeted support to promote and implement best practices including restorative practices, positive discipline, alternatives to suspension.



TRUANCY REDUCTION ACTION PLAN 2009 -2010

- Continue to build capacity of staff performing attendance function to improve home school communication, accurate data entry and data analysis with principals.
- All teachers start taking attendance Day 1 on line using ABI so that schools can open the PARENT PORTAL to monitor student attendance.
- Streamline SART/ SARB/ DA process to ensure higher number of cases resolved by mid year and/or referred to District Attorney (e.g. eTruancy, pre-SART, OPD/ OUSD officers involved in SARBs, etc..).



TRUANCY REDUCTION ACTION PLAN 2009 -2010

CONTINUED

- Partner with the City of Oakland (Mayor's Office, OPD, and City Administrator's Office) to provide advocates and/or mentors for 150 of the most truant middle and high school students in program called "Building Strong Minds".
- Expand Attend and Achieve Community Campaign to continue to engage students, families and community to reduce truancy.
- Expand rewards and recognition programs to promote positive attendance.
- Integrate Attend and Achieve Office into Family & Community Office to increase partnership and focus on families role in reducing truancy with a key pilot on early chronic absenteeism for elementary schools.



VIOLENCE PREVENTION

ACTION PLAN 2009 - 2010

- **Violence Prevention Curricula/Programs:**
 - Caring School Community: 11 K-5 sites
 - Second Step: all preschools, 47 K-5 sites, 4 MS; Parent Ed
 - Too Good for Violence: 14 MS; TGFD&V: HS
 - G.R.E.A.T. Program
- **Conflict Resolution/Peer Mediation**
 - 7-10 Elementary Schools
 - 6-8 Middle Schools
 - On-going resource development
- **Bully Prevention**
 - Site Training on Request
 - On-line Resources



VIOLENCE PREVENTION - CONTINUED

ACTION PLAN 2009 - 2010

- Expand and align the internal and external resources to best support site based safety plans and teams goals and ensure accountability for support to schools by each key service area.
- Ensure that each school has a well defined vision and plan for creating a positive school climate and is prepared to respond to crises and emergencies.
- Build the capacity of school climate and incident command teams so that they are prepared to implement their plans.
- Provide targeted support to promote and implement best practices including restorative practices, positive discipline, alternatives to suspension.



DISCIPLINE, SUSPENSIONS, EXPULSIONS

ACTION PLAN 2009 - 2010

- Develop the Discipline Case Manager role as a Central Office support to secondary sites.
- Put into effect and support a series of strategies as alternatives to suspension for the District.
- Document and track student behavior infractions and interventions.
- Bring together the work of social-emotional learning curricula, including conflict resolution, and restorative justice with site and District discipline and attendance interventions to create in a single coherent strategy.
- Systematically incorporate untapped community resources as components in both the school site and District level discipline practices.
- Develop alternatives within the District's Pupil Disciplinary Hearing Process that respond appropriately to student behaviors but are positive and restorative.



OUSD POLICE SERVICES – ACTION PLAN 2009-2010

- Large High Schools – Dedicated Officer & Responsibilities
- Reduce Weapons on Campus
- Truancy
- Gang Prevention and Intervention: Coordinated services across K-12
- Sexually Exploited Minors
- Coverage of Middle Schools & Elementary Schools (Tactical Officers)



OUSD POLICE SERVICES – LARGE HIGH SCHOOLS RESPONSIBILITIES

- Overall Campus Safety Oversight & Patrol
- Ingress & Egress Safety (School Perimeter Safety & Security)
- Sporting & Special Events Planning & Preparedness
- SSO Daily Coordination & Oversight
- Problem Solving & Community Policing Practices
- Truancy Enforcement
- Gang Awareness & Intervention Coordination with Allied Resources



CAMUPS SAFETY



GANG PREVENTION & INTERVENTION

ACTION PLAN 2009 - 2010

- Partnership with OPD and OUSD to provide GREAT (gang prevention) program to all 5th and 6th graders.
- Continue Measure Y project with case management and gang intervention services at Alternative Education Schools.
- Celebrate, study and replicate pilot programs
- Continue to partner with city and county agencies to expand services.



EMERGENCY PREPAREDNESS

ACTION PLAN 2009 - 2010

- Provide resources and encouragement for all EOC teams at sites and central office complete mandatory emergency preparedness training including on-line training and workshops. (This also included getting all school up to date with First Aid/ CPR.)
- Apply for REMS grant in February 2010.
- Improve process, support and accountability for conducting all mandatory drills.
- Build up Emergency Preparedness Function (next page)



HEALTH SERVICES (MAJOR SAFETY ISSUES)

ACTION PLAN 2009 - 2010

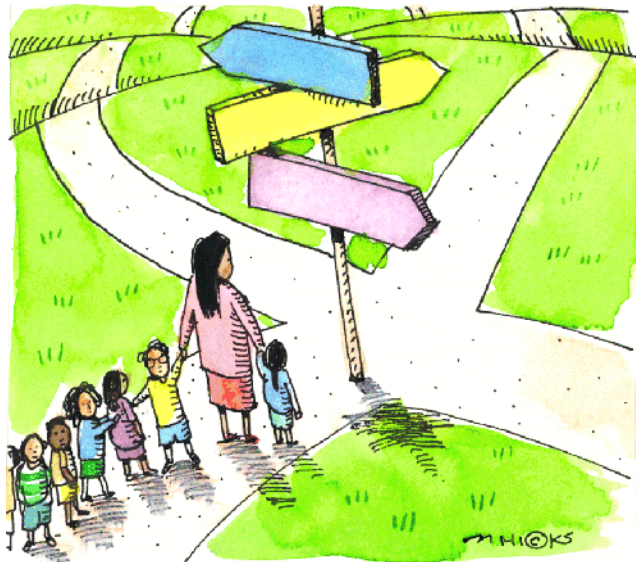
H1N1 RESPONSE PLAN

- OUSD will continue to reiterate the flu prevention recommendations for students and all employees (good hand washing, stay home when sick, contact physician, etc)
- Alameda County Public Health Department (ACPHD) maintains communications with OUSD and school nurses where suspect cases are identified.
- ACPHD will coordinate with OUSD, as the supply of antivirals are available at local clinics and possibly the school district (most recent communication- 8/7/09).
- Jack O'Connell's press release sent to Troy Flint (8/7/09) for distribution.



NEXT STEPS

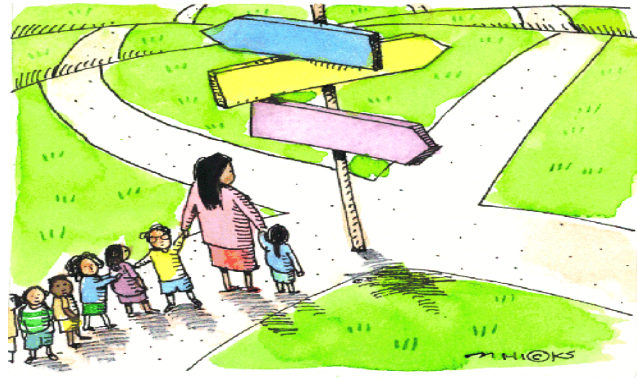
- District Safety Team and Network Officers review and approve Site Leader training and to review Restorative Justice and build support plans for schools with high suspension rates.
- Agree on a “model” that integrates safety/school climate and academic strategies so that we can present a united message about supporting the success of the “whole student”.
- Conduct Site Leader Workshop on Safety and School Climate



NEXT STEPS

CONTINUED

- Executive Team takes and completes all on-line emergency preparedness courses and schedules one day training session for Exec Team EOC.
- Provide monthly monitoring/ reporting mechanisms between District Safety Team and Network Officers using specific safety/ climate data to assure alignment of services and resources to keep our schools safe (e.g. CompStat model).
- Orient and build key contact network at Middle and High School Principals to implement new “Juvenile Justices Placement and Support System” to increase the timeliness and success of educational placements for students and schools.



OUSD Truancy Analysis Report

End Of Year, June 2009 - District Summations On Last Page



Truant Student Count - All Day Only*					Truant Student Count - Days AND/OR Periods**				
3-4 Dates Truant	5-9 Dates Habitual	10+ Dates Chronic	Total	% Stu Body	3-4 Dates Truant	5-9 Dates Habitual	10+ Dates Chronic	Total	% Stu Body

Elementary Schools

ACORN Woodland Elementary	46	29	10	85	36%	46	29	10	85	36%
Allendale Elementary	40	43	24	107	23%	40	43	24	107	23%
Ascend Elementary	4	6	5	15	4%	4	6	5	15	4%
Bella Vista Elementary	44	39	17	100	20%	44	39	17	100	20%
Bridges At Melrose	7	3		10	3%	7	3		10	3%
Brookfield Village Elementary	13	15	13	41	11%	13	15	13	41	11%
Burckhalter Elementary	25	22	5	52	31%	25	22	5	52	31%
Carl Munck Elementary	20	17	13	50	15%	20	17	13	50	15%
Chabot Elementary	34	18	7	59	12%	34	18	7	59	12%
Cleveland Elementary	3	6		9	3%	3	6		9	3%
Community United Elementary	47	37	21	105	41%	47	37	21	105	41%
Crocker Highlands Elementary	10	5	1	16	4%	10	5	1	16	4%
Douglas Tilden	4	2	4	10	7%	4	2	4	10	7%
East Oakland Pride Elementary	77	53	40	170	44%	77	53	40	170	44%
Emerson Elementary	13	2	3	18	7%	13	2	3	18	7%
EnCompass Academy	26	17	20	63	26%	26	17	20	63	26%
Esperanza Elementary	20	14	1	35	11%	20	14	1	35	11%
Franklin Elementary	95	72	42	209	29%	95	72	42	209	29%
Fred T. Korematsu	5	4	5	14	4%	5	4	5	14	4%
Fruitvale Elementary	66	32	9	107	19%	66	32	9	107	19%
Futures Elementary	32	13	12	57	23%	32	13	12	57	23%
Garfield Elementary	119	116	44	279	41%	119	116	44	279	41%
Glenview Elementary	5	6	6	17	4%	5	6	6	17	4%
Global Family School	59	47	19	125	39%	59	47	19	125	39%
Grass Valley Elementary	41	33	23	97	38%	41	33	23	97	38%
Greenleaf Elementary	35	27	18	80	20%	35	27	18	80	20%
Hillcrest Elementary				0	0%				0	0%
Hoover Elementary	21	33	40	94	28%	21	33	40	94	28%
Horace Mann Elementary	35	57	51	143	42%	35	57	51	143	42%
Howard Elementary	32	30	38	100	43%	32	30	38	100	43%
International Comm. Elementary	7	1	3	11	4%	7	1	3	11	4%
Jefferson Elementary	15	15	6	36	32%	15	15	6	36	32%
Joaquin Miller Elementary	33	29	6	68	19%	33	29	6	68	19%
Kaiser Elementary	1		1	2	1%	1		1	2	1%
La Escuelita Elementary	2	4	1	7	3%	2	4	1	7	3%
Lafayette Elementary	17	11	9	37	14%	17	11	9	37	14%
Lakeview Elementary	48	72	53	173	52%	48	72	53	173	52%
Laurel Elementary	52	33	20	105	23%	52	33	20	105	23%
Lazear Elementary	4	4	2	10	3%	4	4	2	10	3%

OUSD Truancy Analysis Report

End Of Year, June 2009 - District Summations On Last Page



	Truant Student Count - All Day Only*					Truant Student Count - Days AND/OR Periods**				
	3-4 Dates Truant	5-9 Dates Habitual	10+ Dates Chronic	Total	% Stu Body	3-4 Dates Truant	5-9 Dates Habitual	10+ Dates Chronic	Total	% Stu Body
Learning Without Limits Elementa	43	54	43	140	47%	43	54	43	140	47%
Lincoln Elementary	2	4		6	1%	2	4		6	1%
Lockwood Elementary	15	12	9	36	44%	15	12	9	36	44%
M L King Jr Elementary	25	24	20	69	27%	25	24	20	69	27%
Manzanita Community	46	57	31	134	46%	46	57	31	134	46%
Markham Elementary	61	52	51	164	40%	61	52	51	164	40%
Marshall Elementary	24	16	9	49	23%	24	16	9	49	23%
Maxwell Park Elementary	12	33	4	49	16%	12	33	4	49	16%
Montclair Elementary	42	16		58	16%	42	16		58	16%
New Highland Academy	5	7	3	15	4%	5	7	3	15	4%
Parker Elementary	50	51	31	132	57%	50	51	31	132	57%
Peralta Elementary		1		1	0%		1		1	0%
Piedmont Avenue Elementary	50	67	46	163	46%	50	67	46	163	46%
PLACE at Prescott	7	8	7	22	9%	7	8	7	22	9%
Reach Academy	49	27	34	110	38%	49	27	34	110	38%
Redwood Heights Elementary	26	8	5	39	12%	26	8	5	39	12%
RISE	42	43	43	128	43%	42	43	43	128	43%
Sankofa	3		1	4	4%	3		1	4	4%
Santa Fe Elementary	51	43	22	116	37%	51	43	22	116	37%
SEED Elementary	3	2		5	2%	3	2		5	2%
Sequoia Elementary	42	30	15	87	25%	42	30	15	87	25%
Sobrante Park Elementary	45	41	31	117	44%	45	41	31	117	44%
Think College Now	1	1	2	4	1%	1	1	2	4	1%
Thornhill Elementary				0	0%				0	0%
Webster Academy	8	13	2	23	32%	8	13	2	23	32%
Whittier Elementary	8	10	3	21	30%	8	10	3	21	30%

Middle Schools

Alliance Academy	44	46	35	125	39%	37	82	161	280	87%
Alternative Learning Community				0	0%		6	28	34	97%
Bret Harte Middle School	76	121	127	324	44%	59	158	470	687	94%
Claremont Middle School	36	34	27	97	23%	26	69	318	413	97%
Cole Middle School	10	12	7	29	38%	5	12	57	74	97%
Edna M Brewer Middle School	23	24	17	64	9%	146	240	229	615	82%
Elmhurst Community Prep	59	54	14	127	39%	28	87	168	283	87%
Explore College Prep	40	45	42	127	54%	6	26	202	234	99%
Frick Middle School	86	81	53	220	44%	24	90	356	470	93%
James Madison Middle School	2	2	1	5	2%	28	56	178	262	90%
Melrose Leadership Academy	26	24	12	62	32%	24	30	21	75	39%
Montera Middle School	50	37	17	104	12%	173	251	277	701	78%
Oakland Community Day Middle	1	9	17	27	84%	1	9	18	28	88%

OUSD Truancy Analysis Report

End Of Year, June 2009 - District Summations On Last Page

	Truant Student Count - All Day Only*					Truant Student Count - Days AND/OR Periods**				
	3-4 Dates Truant	5-9 Dates Habitual	10+ Dates Chronic	Total	% Stu Body	3-4 Dates Truant	5-9 Dates Habitual	10+ Dates Chronic	Total	% Stu Body
Peralta Creek Middle School	7	5	12	24	39%	9	13	34	56	90%
Roosevelt Middle School	22	28	48	98	14%	112	149	312	573	81%
Roots International Academy	36	48	36	120	35%	20	63	242	325	96%
United For Success	34	23	17	74	18%	88	91	88	267	65%
Urban Promise Academy	28	17	13	58	20%	28	39	46	113	39%
West Oakland Middle School	25	47	56	128	77%	23	37	75	135	81%
Westlake Middle School	65	92	80	237	39%	25	67	406	498	82%

Senior Schools

Bunche Academy	18	49	63	130	63%		2	205	207	100%
Business Entrepreneurial Tech (BE)	11	28	39	78	68%		1	114	115	100%
Business Information Tech HS	34	68	156	258	78%	2	15	309	326	98%
Coliseum College Prep	19	15	14	48	19%	20	53	170	243	95%
College Prep & Architecture Acade	59	56	89	204	61%	18	37	268	323	96%
Dewey Academy				0	0%	1	3	225	229	95%
East Oakland Arts HS	36	37	23	96	38%	2	1	251	254	100%
EXCEL College Prep HS	12	20	14	46	18%	1	2	249	252	98%
Far West	15	21	37	73	51%	2	5	128	135	94%
Leadership Preparatory HS	57	63	108	228	63%	4	37	311	352	97%
Life Academy	20	14	17	51	21%	28	43	150	221	91%
Mandela High School	26	47	34	107	35%	10	42	248	300	98%
Media College Prep	58	64	54	176	58%	6	10	284	300	99%
MetWest High School				0	0%				0	0%
Oakland Community Day HS	2	6	13	21	78%	2	5	15	22	81%
Oakland High School	114	120	110	344	21%	42	189	1377	1608	98%
Oakland International HS	14	12	21	47	26%	16	18	30	64	35%
Oakland Technical High School	153	177	200	530	34%	55	169	1265	1489	96%
Robeson Visual Performing Arts	39	44	68	151	62%	1	7	230	238	98%
Rudsdale Continuation		1		1	1%	2	5	137	144	97%
Skyline High School	232	235	266	733	38%	17	79	1809	1905	99%
Sojourner Truth Independent Stud	5	9	34	48	28%	5	9	34	48	28%
Street Academy				0	0%				0	0%
Youth Empowerment School (YES)	33	48	46	127	60%	2	22	184	208	99%

SpecialEd Schools

Hillside Academy	4	2	8	14	34%	4	2	8	14	34%
------------------	---	---	---	----	-----	---	---	---	----	-----

DISTRICT SUMMATIONS

Elementary Schools	1817	1587	1004	4408	21%	1817	1587	1004	4408	21%
Middle Schools	670	749	631	2050	28%	862	1575	3686	6123	83%
Senior Schools	957	1134	1406	3497	36%	236	754	7993	8983	92%

OUSD Truancy Analysis Report - 2009-10

8/31/09 to 10/30/09 - District Summations On Last Page



Truant Student Count - All Day Only*					Truant Student Count - Days AND/OR Periods**				
3-4 Dates Truant	5-9 Dates Habitual	10+ Dates Chronic	Total	% Stu Body	3-4 Dates Truant	5-9 Dates Habitual	10+ Dates Chronic	Total	% Stu Body

Elementary Schools

ACORN Woodland Elementary	16	4		20	8%	16	4		20	8%
Allendale Elementary				0	0%				0	0%
Ascend Elementary		2		2	1%		2		2	1%
Bella Vista Elementary	6	13	1	20	4%	6	13	1	20	4%
Bridges At Melrose	9			9	2%	9			9	2%
Brookfield Village Elementary	37	33	6	76	19%	37	33	6	76	19%
Burckhalter Elementary	14	3		17	10%	14	3		17	10%
Carl Munck Elementary	21	11	1	33	10%	21	11	1	33	10%
Chabot Elementary	13	1		14	3%	13	1		14	3%
Cleveland Elementary	1			1	0%	1			1	0%
Community United Elementary	19	8		27	8%	19	8		27	8%
Crocker Highlands Elementary	2		1	3	1%	2		1	3	1%
Douglas Tilden	10	9	2	21	23%	10	9	2	21	23%
East Oakland PRIDE Elementary	1	3		4	1%	1	3		4	1%
Emerson Elementary	1	5		6	2%	1	5		6	2%
EnCompass Academy	7	3	1	11	4%	7	3	1	11	4%
Esperanza Elementary	1		1	2	1%	1		1	2	1%
Franklin Elementary	17	17	2	36	5%	17	17	2	36	5%
Fred T. Korematsu				0	0%				0	0%
Fruitvale Elementary	19	7	1	27	5%	19	7	1	27	5%
Futures Elementary	10	4		14	5%	10	4		14	5%
Garfield Elementary	28	23		51	8%	28	23		51	8%
Glenview Elementary	3	4		7	2%	3	4		7	2%
Global Family School	14	6	1	21	5%	14	6	1	21	5%
Grass Valley Elementary	4	2		6	2%	4	2		6	2%
Greenleaf Elementary	10	4		14	3%	10	4		14	3%
Hillcrest Elementary				0	0%				0	0%
Hoover Elementary	18	7	1	26	8%	18	7	1	26	8%
Horace Mann Elementary	22	12	6	40	12%	22	12	6	40	12%
Howard Elementary	16	8	1	25	12%	16	8	1	25	12%
International Comm. Elementary	2			2	1%	2			2	1%
Joaquin Miller Elementary	3	1		4	1%	3	1		4	1%
Kaiser Elementary				0	0%				0	0%
La Escuelita Elementary	3	2	1	6	2%	3	2	1	6	2%
Lafayette Elementary	4	4	1	9	3%	4	4	1	9	3%
Lakeview Elementary	6	1		7	2%	6	1		7	2%
Laurel Elementary	12			12	3%	12			12	3%
Lazear Elementary	1	2		3	1%	1	2		3	1%
Learning Without Limits Elementa	11	2		13	4%	11	2		13	4%

OUSD Truancy Analysis Report - 2009-10

8/31/09 to 10/30/09 - District Summations On Last Page



	Truant Student Count - All Day Only*					Truant Student Count - Days AND/OR Periods**				
	3-4 Dates Truant	5-9 Dates Habitual	10+ Dates Chronic	Total	% Stu Body	3-4 Dates Truant	5-9 Dates Habitual	10+ Dates Chronic	Total	% Stu Body
Lincoln Elementary				0	0%				0	0%
M L King Jr Elementary	15	13	3	31	13%	15	13	3	31	13%
Manzanita Community	33	10	5	48	17%	33	10	5	48	17%
Markham Elementary	48	31	3	82	20%	48	31	3	82	20%
Marshall Elementary	7	3		10	4%	7	3		10	4%
Maxwell Park Elementary	7	1		8	3%	7	1		8	3%
Montclair Elementary				0	0%				0	0%
New Highland Academy				0	0%				0	0%
Parker Elementary	13	4	2	19	8%	13	4	2	19	8%
Peralta Elementary				0	0%				0	0%
Piedmont Avenue Elementary	7	1	1	9	3%	7	1	1	9	3%
PLACE at Prescott	1	1	3	5	2%	1	1	3	5	2%
Reach Academy	21	16	1	38	13%	21	16	1	38	13%
Redwood Heights Elementary	8	2		10	3%	8	2		10	3%
RISE	9	9		18	6%	9	9		18	6%
Sankofa				0	0%				0	0%
Santa Fe Elementary	17	11	2	30	10%	17	11	2	30	10%
SEED Elementary	1			1	0%	1			1	0%
Sequoia Elementary	6			6	2%	6			6	2%
Sobrante Park Elementary	20	7	3	30	12%	20	7	3	30	12%
Think College Now				0	0%				0	0%
Thornhill Elementary				0	0%				0	0%

Middle Schools

Alliance Academy	12	5	2	19	5%	44	24	10	78	23%
Barack Obama Academy	2	5	1	8	24%	4	8	10	22	65%
Bret Harte Middle School	35	14	4	53	8%	129	155	77	361	51%
Claremont Middle School	4	8	3	15	4%	77	65	46	188	46%
Coliseum College Prep	4	2		6	2%	50	40	12	102	32%
Edna M Brewer Middle School	5	2	2	9	1%	76	55	10	141	18%
Elmhurst Community Prep	34	9	2	45	13%	62	38	5	105	30%
Explore College Prep	1	2		3	2%	38	50	21	109	58%
Frick Middle School	35	11		46	11%	118	149	46	313	72%
James Madison Middle School	3			3	1%	50	27	10	87	29%
Melrose Leadership Academy	7	3		10	5%	7	3		10	5%
Montera Middle School	3	1		4	0%	86	67	9	162	18%
Oakland Community Day Middle	3	3	2	8	47%	3	5	3	11	65%
Roosevelt Middle School	4	1	1	6	1%	67	54	29	150	23%
Roots International Academy	11	7	2	20	6%	62	106	60	228	63%
United For Success	5	3	1	9	2%	60	30	15	105	25%
Urban Promise Academy	2	2	1	5	2%	28	12	6	46	15%

OUSD Truancy Analysis Report - 2009-10

8/31/09 to 10/30/09 - District Summations On Last Page



	Truant Student Count - All Day Only*					Truant Student Count - Days AND/OR Periods**				
	3-4 Dates Truant	5-9 Dates Habitual	10+ Dates Chronic	Total	% Stu Body	3-4 Dates Truant	5-9 Dates Habitual	10+ Dates Chronic	Total	% Stu Body
West Oakland Middle School	19	8	2	29	13%	30	15	7	52	24%
Westlake Middle School	36	28	4	68	11%	92	115	71	278	43%

Senior Schools

Bunche Academy				0	0%	10	33	187	230	85%
Business Entrepreneurial Tech (BE)	6	3	3	12	17%	3	17	40	60	85%
Business Information Tech HS	31	27	6	64	20%	48	94	135	277	84%
College Prep & Architecture Acade	37	34	22	93	25%	65	73	117	255	67%
Dewey Academy				0	0%	34	66	137	237	88%
East Oakland Arts HS	10	4	2	16	6%	29	73	121	223	86%
EXCEL College Prep HS	10	4	3	17	7%	14	60	156	230	91%
Far West				0	0%	21	39	51	111	68%
Gateway To College				0	0%				0	0%
Leadership Preparatory HS	19	32	19	70	19%	63	111	115	289	78%
Life Academy	11	6	2	19	7%	47	66	51	164	64%
Mandela High School	21	24	8	53	14%	35	97	105	237	65%
Media College Prep	32	34	7	73	20%	45	86	173	304	85%
MetWest High School				0	0%				0	0%
Oakland Community Day HS	3	4		7	30%	2	6	8	16	70%
Oakland High School	85	58	28	171	9%	260	375	729	1364	75%
Oakland International HS	4	9	2	15	7%	26	41	22	89	39%
Oakland Technical High School	73	66	26	165	10%	266	344	541	1151	67%
Robeson Visual Performing Arts	22	19	9	50	34%	12	35	80	127	87%
Rudsdale Continuation				0	0%	9	24	109	142	81%
Skyline High School	74	63	14	151	8%	274	503	716	1493	75%
Sojourner Truth Independent Stud	4	11	9	24	17%	4	11	9	24	17%
Street Academy				0	0%				0	0%
Youth Empowerment School (YES)	20	19	3	42	18%	26	64	93	183	78%

SpecialEd Schools

Hillside Academy	2	2	6	10	48%	2	2	6	10	48%
------------------	---	---	---	----	-----	---	---	---	----	-----

DISTRICT SUMMATIONS

Elementary Schools	574	310	50	934	5%	574	310	50	934	5%
Middle Schools	225	114	27	366	5%	1083	1018	447	2548	34%
Senior Schools	462	417	163	1042	10%	1293	2218	3695	7206	71%

TONY SMITH, PH.D. Superintendent

January 13, 2010

Dear _____,

I would like to invite you to participate in the upcoming Truancy Task Force meetings so that we can continue to focus our partnership on Oakland's "Attend and Achieve" campaign. The Truancy Task Force has been in operation for over seven years and is a collaboration between the School District, the District Attorney's Office, the Mayor's Office, City Council, Alameda Office County of Education, local police agencies and numerous community and faith based organizations.

As the new Superintendent I was introduced to the great work of this collaborative at the series of Back to School Attend and Achieve Rallies held at City Hall, DeFremery Park and Arroyo Viejo Park. These events increased public awareness of the need to start school day 1 and to attend and achieve every day. Over a thousand students and families attended these events and learned more about how to help their child succeed in school and received backpacks with school supplies and free books. Along with other civic and community leaders I was able to welcome many students and families back to school.

In addition to these Back to School Rallies, we also provided every school with information about which students were truant 10 or more days of school in 2008-2009 so that Principals could start these students on the right path to positive attendance. Our focus for the first half of the year has been to promote a more systematic use of the progressive intervention process of School Attendance Review Team (SART) to School Attendance Review Board (SARB) to District Attorney's Office so that each chronic truant student and their family clearly understands our expectations for high attendance and can receive the support they need to address underlying barriers.

I would now like to restart another successful practice that the Truancy Task Force employed last year conducting monthly communication and outreach events at schools with high truancy rates. The ten schools that participated in these events last year had a significant decrease in truancy and it helped us send a broader message to the community about working together to address the needs of our youth and families. I plan to start each of these school/ community based events with our formal Task Force meeting where we review data and progress of key Attend and Achieve strategies and provide each other feedback on the effectiveness of our collaborations. We will then work directly with the host school to break into smaller groups to participate in one or many of the following activities: community walk, home visits and meeting with chronic truant students and their families.

I want to thank many of you who participated actively in the Truancy Task Force in the past and encourage you to join me as we continue to strengthen this partnership going forward

Sincerely,

Tony Smith, Ph.D.
Superintendent

Month 3 Attendance Percentage Report 2009-10

1/15/2010 10:26		A	B	C	D=A+B+C	F	G	H	I=F+G+H	K=I / D	L	M	N=K-M	O	P=K-O
School Name	Site #	Regular	Indep. Study	Special Ed.	Total Potential Days of Attendance	Regular	Indep. Study	Special Ed.	Total Actual Days of Attendance	Percentages of Actual Attendance	Type of School	Average for Type of School	Variance to Average	Target for Type of School	Variance to Target
Allendale	101	23711		284	23995	22887		260	23147	96.47%	Elementary	95.72%	0.75%	98%	-1.53%
Bella Vista	102	25197	10	2081	27288	24208	10	1901	26119	95.72%	Elementary	95.72%	0.00%	98%	-2.28%
Brookfield	103	18830		1549	20379	17940		1467	19407	95.23%	Elementary	95.72%	-0.49%	98%	-2.77%
Burckhalter	105	8405		676	9081	7807		628	8435	92.89%	Elementary	95.72%	-2.83%	98%	-5.11%
Chabot	106	26428	64	364	26856	25505	49	309	25863	96.30%	Elementary	95.72%	0.58%	98%	-1.70%
East Oakland Pride	107	22337		1172	23509	21263		1093	22356	95.10%	Elementary	95.72%	-0.62%	98%	-2.90%
Cleveland	108	17965	11	229	18205	17563	11	214	17788	97.71%	Elementary	95.72%	1.99%	98%	-0.29%
Crocker Highland	111	19104		104	19208	18663		102	18765	97.69%	Elementary	95.72%	1.97%	98%	-0.31%
Greenleaf Academy	112	23219	14		23233	22416	9		22425	96.52%	Elementary	95.72%	0.80%	98%	-1.48%
Learning w/o Limits	113	17854			17854	16936			16936	94.86%	Elementary	95.72%	-0.86%	98%	-3.14%
Global Family	114	18709	3	1116	19828	17796	0	1035	18831	94.97%	Elementary	95.72%	-0.75%	98%	-3.03%
Emerson	115	13596	9	1275	14880	12947	9	1234	14190	95.36%	Elementary	95.72%	-0.36%	98%	-2.64%
Franklin	116	37244	43	1509	38796	36120	43	1328	37491	96.64%	Elementary	95.72%	0.92%	98%	-1.36%
Fruitvale	117	26082	18	1166	27266	24702	17	1037	25756	94.46%	Elementary	95.72%	-1.26%	98%	-3.54%
Garfield	118	33528	9	205	33742	31931	0	204	32135	95.24%	Elementary	95.72%	-0.48%	98%	-2.76%
Glenview	119	20557	31	514	21102	19936	31	468	20435	96.84%	Elementary	95.72%	1.12%	98%	-1.16%
La Escuelita	121	12619	17	659	13295	12235	17	561	12813	96.37%	Elementary	95.72%	0.65%	98%	-1.63%
Grass Valley	122	13257	21		13278	12788	16		12804	96.43%	Elementary	95.72%	0.71%	98%	-1.57%
Futures Academy	123	15522			15522	14633			14633	94.27%	Elementary	95.72%	-1.45%	98%	-3.73%
New Highland Academy	125	17072			17072	16377			16377	95.93%	Elementary	95.72%	0.21%	98%	-2.07%
Hillcrest	127	16938	25		16963	16407	25		16432	96.87%	Elementary	95.72%	1.15%	98%	-1.13%
Lafayette	129	14199		1041	15240	13280		957	14237	93.42%	Elementary	95.72%	-2.30%	98%	-4.58%
Lakeview	130	16272			16272	15618			15618	95.98%	Elementary	95.72%	0.26%	98%	-2.02%
Laurel	131	23814	34		23848	22913	34		22947	96.22%	Elementary	95.72%	0.50%	98%	-1.78%
Lazear	132	15851	19		15870	15118	18		15136	95.37%	Elementary	95.72%	-0.35%	98%	-2.63%
Lincoln	133	31338	28		31366	30932	26		30958	98.70%	Elementary	95.72%	2.98%	98%	0.70%
Horace Mann	136	17232			17232	16214			16214	94.09%	Elementary	95.72%	-1.63%	98%	-3.91%
Markham	138	20403		1231	21634	18867		1060	19927	92.11%	Elementary	95.72%	-3.61%	98%	-5.89%
Maxwell Park	139	13820	33	936	14789	12961	33	897	13891	93.93%	Elementary	95.72%	-1.79%	98%	-4.07%
Joaquin Miller	142	18433	38	346	18817	17992	30	336	18358	97.56%	Elementary	95.72%	1.84%	98%	-0.44%
Montclair	143	21668	16		21684	20999	14		21013	96.91%	Elementary	95.72%	1.19%	98%	-1.09%
Parker	144	11799			11799	11173			11173	94.69%	Elementary	95.72%	-1.03%	98%	-3.31%
Peralta	145	15423	39		15462	14964	39		15003	97.03%	Elementary	95.72%	1.31%	98%	-0.97%

Month 3 Attendance Percentage Report 2009-10

1/15/2010 10:26		A	B	C	D=A+B+C	F	G	H	I=F+G+H	K=I / D	L	M	N=K-M	O	P=K-O
School Name	Site #	Regular	Indep. Study	Special Ed.	Total Potential Days of Attendance	Regular	Indep. Study	Special Ed.	Total Actual Days of Attendance	Percentages of Actual Attendance	Type of School	Average for Type of School	Variance to Average	Target for Type of School	Variance to Target
Piedmont Avenue	146	17916		560	18476	16999		523	17522	94.84%	Elementary	95.72%	-0.88%	98%	-3.16%
Redwood Heights	148	16301		676	16977	15893		609	16502	97.20%	Elementary	95.72%	1.48%	98%	-0.80%
Community United	149	17213			17213	16532			16532	96.04%	Elementary	95.72%	0.32%	98%	-1.96%
Santa Fe	150	13621		1121	14742	12761		1027	13788	93.53%	Elementary	95.72%	-2.19%	98%	-4.47%
Sequoia	151	19546	35	577	20158	18765	35	537	19337	95.93%	Elementary	95.72%	0.21%	98%	-2.07%
Sobrante Park	154	13056			13056	12273			12273	94.00%	Elementary	95.72%	-1.72%	98%	-4.00%
Thornhill	157	18953		311	19264	18450		307	18757	97.37%	Elementary	95.72%	1.65%	98%	-0.63%
Acorn Woodland	165	12319	7	207	12533	11893	0	178	12071	96.31%	Elementary	95.72%	0.59%	98%	-1.69%
Howard	166	10150	41	707	10898	9636	4	674	10314	94.64%	Elementary	95.72%	-1.08%	98%	-3.36%
Carl Munck	168	17272	6	520	17798	16569	6	487	17062	95.86%	Elementary	95.72%	0.14%	98%	-2.14%
Hoover	170	16220			16220	15420			15420	95.07%	Elementary	95.72%	-0.65%	98%	-2.93%
Kaiser	171	13276			13276	12922			12922	97.33%	Elementary	95.72%	1.61%	98%	-0.67%
F T Korematsu Discovery Ac	172	17448	104	405	17957	16719	51	339	17109	95.28%	Elementary	95.72%	-0.44%	98%	-2.72%
Hillside Academy	173	1065			1065	717			717	67.32%	Elementary Exceptional	88.59%	-21.27% ?		#VALUE!
Marshall	174	9131	9	2783	11923	8705	8	2651	11364	95.31%	Elementary	95.72%	-0.41%	98%	-2.69%
Manzanita SEED	175	11088		322	11410	10601		306	10907	95.59%	Elementary	95.72%	-0.13%	98%	-2.41%
Tilden	176	2041		2711	4752	1929		2507	4436	93.35%	Elementary Exceptional	88.59%	4.76% ?		#VALUE!
Esperanza Academy	177	16848	10		16858	16318	10		16328	96.86%	Elementary	95.72%	1.14%	98%	-1.14%
Bridges Academy	178	19947			19947	19263			19263	96.57%	Elementary	95.72%	0.85%	98%	-1.43%
Manzanita Community Scho	179	13982	62	1105	15149	13172	48	1015	14235	93.97%	Elementary	95.72%	-1.75%	98%	-4.03%
EnCompass Acad.	181	13062	6	52	13120	12436	6	43	12485	95.16%	Elementary	95.72%	-0.56%	98%	-2.84%
M L King	182	11350		1162	12512	10870		1066	11936	95.40%	Elementary	95.72%	-0.32%	98%	-2.60%
PLACE at Prescott	183	10977	20		10997	10031	20		10051	91.40%	Elementary	95.72%	-4.32%	98%	-6.60%
ASCEND	185	18130	10		18140	17667	4		17671	97.41%	Elementary	95.72%	1.69%	98%	-0.59%
International Comm	186	13294	9		13303	12862	9		12871	96.75%	Elementary	95.72%	1.03%	98%	-1.25%
Think College Now	190	14494	24		14518	14115	24		14139	97.39%	Elementary	95.72%	1.67%	98%	-0.61%
Sankofa	191	5934		52	5986	5589		52	5641	94.24%	Elementary	95.72%	-1.48%	98%	-3.76%
RISE	192	16455			16455	15567			15567	94.60%	Elementary	95.72%	-1.12%	98%	-3.40%
Reach Academy	193	15559			15559	14377			14377	92.40%	Elementary	95.72%	-3.32%	98%	-5.60%
Claremont	201	19507	37	1523	21067	18001	0	1367	19368	91.94%	Middle	95.16%	-3.22%	96%	-4.06%
Frick	203	20839		1436	22275	19467		1294	20761	93.20%	Middle	95.16%	-1.96%	96%	-2.80%

Month 3 Attendance Percentage Report 2009-10

1/15/2010 10:26		A	B	C	D=A+B+C	F	G	H	I=F+G+H	K=I / D	L	M	N=K-M	O	P=K-O
School Name	Site #	Regular	Indep. Study	Special Ed.	Total Potential Days of Attendance	Regular	Indep. Study	Special Ed.	Total Actual Days of Attendance	Percentages of Actual Attendance	Type of School	Average for Type of School	Variance to Average	Target for Type of School	Variance to Target
West Oakland Middle	204	11043			11043	10370			10370	93.91%	Middle	95.16%	-1.25%	96%	-2.09%
Bret Harte	206	33717		2583	36300	31795		2319	34114	93.98%	Middle	95.16%	-1.18%	96%	-2.02%
Edna Brewer	210	37330		3564	40894	35985		3229	39214	95.89%	Middle	95.16%	0.73%	96%	-0.11%
Montera	211	44232	13	1956	46201	42772	7	1818	44597	96.53%	Middle	95.16%	1.37%	96%	0.53%
Roosevelt	212	32275		1768	34043	30665		1490	32155	94.45%	Middle	95.16%	-0.71%	96%	-1.55%
Westlake	213	30202		3098	33300	28771		2719	31490	94.56%	Middle	95.16%	-0.60%	96%	-1.44%
Madison	215	15496		289	15785	14823		261	15084	95.56%	Middle	95.16%	0.40%	96%	-0.44%
Elmhurst Community Prep	221	17400		787	18187	16755		715	17470	96.06%	Middle	95.16%	0.90%	96%	0.06%
Alliance Academy	224	18098			18098	17400			17400	96.14%	Middle	95.16%	0.98%	96%	0.14%
EXPLORE	225	9694			9694	9423			9423	97.20%	Middle	95.16%	2.04%	96%	1.20%
ROOTS	226	17726		541	18267	17269		491	17760	97.22%	Middle	95.16%	2.06%	96%	1.22%
United For Success Academy	228	21153		618	21771	19920		556	20476	94.05%	Middle	95.16%	-1.11%	96%	-1.95%
Coliseum College Preparator	232	15171	24	1054	16249	14602	4	912	15518	95.50%	High	94.03%	1.47%	94%	1.50%
Urban Promise	236	15504			15504	15013			15013	96.83%	Middle	95.16%	1.67%	96%	0.83%
Oakland High	304	88888		4881	93769	85225		4370	89595	95.55%	High	94.03%	1.52%	94%	1.55%
Oakland Technical HS	305	83720		4626	88346	79591		4256	83847	94.91%	High	94.03%	0.88%	94%	0.91%
Skyline	306	94948		8064	103012	90141		7400	97541	94.69%	High	94.03%	0.66%	94%	0.69%
Bunche Continuation	309	37161.00		1389.00	38550.00	22266.84		571.25	22838.09	59.24%	High Cont. Hourly	59.46%	-0.22%	?	#VALUE!
Dewey High School	310	41205.00		600.00	41805.00	29833.26		358.40	30191.66	72.22%	High Cont. Hourly	59.46%	12.76%	?	#VALUE!
Street Academy	313	6463			6463	5823			5823	90.10%	High Alt Ed	95.68%	-5.58%	94%	-3.90%
Far West	314	7844		46	7890	7825		45	7870	99.75%	High Alt Ed	95.68%	4.07%	94%	5.75%
IS, Sojourner Truth (K-12)	330		7186		7186		6758		6758	94.04%	High FT Ind Study	95.28%	-1.24%	94%	0.04%
Community Day (MS)	333										CDS				
Life Academy	335	12593		873	13466	12257		786	13043	96.86%	High	94.03%	2.83%	94%	2.86%
Metwest	338	6985		33	7018	6756		20	6776	96.55%	High FT Ind Study	95.28%	1.27%	94%	2.55%
College Prep. & Arch. Acad.	339	18452		613	19065	17342		557	17899	93.88%	High	94.03%	-0.15%	94%	-0.12%
Robeson	340	7409		1	7410	6725		1	6726	90.77%	High	94.03%	-3.26%	94%	-3.23%
Mandela High School	342	18314		476	18790	16857		393	17250	91.80%	High	94.03%	-2.23%	94%	-2.20%

Month 3 Attendance Percentage Report 2009-10

1/15/2010 10:26		A	B	C	D=A+B+C	F	G	H	I=F+G+H	K=I / D	L	M	N=K-M	O	P=K-O
School Name	Site #	Regular	Indep. Study	Special Ed.	Total Potential Days of Attendance	Regular	Indep. Study	Special Ed.	Total Actual Days of Attendance	Percentages of Actual Attendance	Type of School	Average for Type of School	Variance to Average	Target for Type of School	Variance to Target
Media College Prep.	343	17087	46	477	17610	16197	46	410	16653	94.57%	High	94.03%	0.54%	94%	0.57%
Youth Empowerment School	344	10743	69	714	11526	9709	42	622	10373	90.00%	High	94.03%	-4.03%	94%	-4.00%
Busines & Info. Technology	346	15994		817	16811	14958		708	15666	93.19%	High	94.03%	-0.84%	94%	-0.81%
Leadership Preparatory High	347	17426	30	1465	18921	15210	0	1214	16424	86.80%	High	94.03%	-7.23%	94%	-7.20%
East Oak. School of the Arts	348	12284		961	13245	11379		835	12214	92.22%	High	94.03%	-1.81%	94%	-1.78%
BEST	350	3241	47	160	3448	2846	24	141	3011	87.33%	High	94.03%	-6.70%	94%	-6.67%
EXCEL	351	12747		418	13165	11802		389	12191	92.60%	High	94.03%	-1.43%	94%	-1.40%
Rudsdale Continuation	352	39444.00		1443.00	40887.00	18210.90		844.80	19055.70	46.61%	High Cont. Hourly	59.46%	-12.85% ?		#VALUE!
Oakland International	353	11652		52	11704	10911		52	10963	93.67%	High	94.03%	-0.36%	94%	-0.33%
Melrose Leadership Academy	235				0				0	#DIV/0!	Middle	95.16%	#DIV/0!	96%	#DIV/0!
Community Day (MS)	269										CDS				
Barack Obama Academy	208										CDS				

Attendance is almost 100% ?



OAKLAND UNIFIED
SCHOOL DISTRICT

expect **Success**

Attend & Achieve
Attendance and Truancy Plan
2009-2010

Attend and Achieve Plan

Program Goals

1. To provide support to Schools to meet the District wide Student Attendance Targets

Level	2006-2007 Attendance	2007-2008 Attendance	2008-2009 Attendance
Elementary	95.15%	95.08%	95.34%
Middle	94.55%	94.35%	94.28%
High School	91.87%	93.67%	92.95%
Alt Ed	88.96%	89.48%	90.01%
District	94.15%	94.50%	94.52%

2. To provide support to Schools to reduce truancy rates.
3. Reduce high school drop out rates/ Increase high school graduation

Attend and Achieve Ten Point Plan

The “Attend and Achieve” Plan, was launched five years ago with the generous support of many civic and community partners.

The key components of the plan for 2009-2010 include:

1. Communication and Engagement Campaign
2. Build School Staff Capacity
3. Data and Accountability reports and systems
4. Parent Education and Outreach
5. Notification of Truancy (NOT) Letters
6. SART/ SARB/ District Attorney’s Office
7. Truancy Task Force/ OUSD Partners
8. School Security Officers
9. Pilot best practice programs
10. Truancy Diversion and Return to School process with OUSD/OPD.

Truancy Reduction Progress Report

Truant Student Counts^ - All Day Incidents Only

Group	Type	Truant Count		Change
		0708	0809	
3-10 Dates	Elementary*	3796	3538	-7%
	Middle	1870	1489	-20%
	Senior	2199	2208	0%
11-19 Dates	Elementary*	761	567	-25%
	Middle	494	350	-29%
	Senior	599	660	10%
20+ Dates	Elementary*	445	302	-32%
	Middle	264	201	-24%
	Senior	558	606	9%

**includes K-8 schools*

^Only active students are included in these counts for both years

2008-2009 Accomplishments

- Site Leaders promoting a variety of strategies including home-school communication, conducting SARTs, identifying resources for most truant students and reward programs.
- Multi-stakeholder, Truancy Task Force conducted successful Attend and Achieve Campaign including 7 community events/ walks covering 10 schools and back to school rallies including student focus groups, recognitions, home visits and door to door outreach to distribute truancy tip line.
- Professional development for school leaders and staff on appropriate attendance accounting and SART process.
- Strong partnership with the Alameda County/ District Attorney's office to support prevention efforts and innovative pilots (e.g. Claremont Middle School Truancy Court, Parent Truant program, etc..).
- Monthly monitoring reports distributed to School Leaders to raise awareness and accountability.

Highlights of Attendance & Truancy Reduction ACTION PLAN 2009 -2010

- Continue to build capacity of staff performing attendance function to improve home school communication, accurate data entry and data analysis with principals.
- All teachers start taking attendance Day 1 on line using ABI, at technology enabled schools, so that schools can open the PARENT PORTAL to monitor student attendance.
- Streamline SART/ SARB/ DA process to ensure higher number of cases resolved by mid year and/or referred to District Attorney, especially to the “parent truant program” which has an 84% success rate. *All schools received a Pre-SART agreement for students with 10 or more days absent/ truant in 2008-2009 so that they can ask families and students to sign BEFORE first day of school.*

TRUANCY REDUCTION ACTION PLAN 2009 -2010

CONTINUED

- Partner with the City of Oakland (OPD, Mayor's Office, and City Attorney's Office) to provide advocates and/or mentors for 150 of the most truant middle and high school students.
- Expand Attend and Achieve Community Campaign to continue to engage students, families and community to reduce truancy.
- Expand rewards and recognition programs to promote positive attendance.
- Integrate Attend and Achieve Office into FCO to increase partnership and focus on families role in reducing truancy with a key pilot on early chronic absenteeism for elementary schools.

Why Does Chronic Early Absence Matter?

- Consistent attendance starting in the early grades is critical to gaining the social and academic skills essential to school success.
 - Chronic absence in kindergarten predicts lower academic achievement in 1st grade for all children and the lowest achievement among 5th graders living in poverty.
 - If children miss extended periods of school in their first years, they are unlikely to “learn to read” so they can “read to learn” by 4th grade.
 - Chronic early absence can reach high levels locally – as high as 25% district wide or half of all the children in a particular elementary school.
 - Consistently poor attendance, year after year, in the early grades predicts continued poor attendance by the end of elementary school. Poor attendance in 6th grade predicts high school drop out.

Family Engagement to Address Chronic Absence

Goal

Support 20 schools to develop and implement action plans to address chronic absence

Objectives

- Secure principal buy-in
- Identify and convene action team
- Provide training, tools, a learning community, and technical assistance
- Develop action plans
- Document process and results

Parents for Success Program

Goal

Pilot the program with 5 schools to engage 25 families (per school) to address attendance, reading fluency, and behavior

Objectives

- Training has been completed
- Identify, enroll and secure commitment from families
- Create Fluency Wall
- Provide “I Am Here and Ready to Learn” training
- Provide case management support to families
- Provide teacher training