



Washington Early Childhood Center Facilities Project

Facilities Committee, May 21,
2026

OUSD Facilities Planning & Management, Early
Childhood, and Enrollment Offices



**OAKLAND UNIFIED
SCHOOL DISTRICT**

Community Schools, Thriving Students

Agenda

- Overview & Context
- Proposed Project
 - Scope
 - Funding & Schedule
 - Long Term Impact
- Next Steps





OUSD Vision and Mission



VISION

All OUSD students will find joy in their academic experience while graduating with the skills to ensure they are caring, competent, fully-informed, critical thinkers who are prepared for college, career, and community success.



MISSION

Oakland Unified School District (OUSD) will build a Full Service Community District focused on high academic achievement while serving the whole child, eliminating inequity, and providing each child with excellent teachers, every day.



OUSD Facilities Mission Statement



MISSION

We support whole student growth and success by planning, constructing, and maintaining facilities that are flexible, resilient, healthy, safe, and joyful.

These spaces maximize inclusion, collaboration, empower innovation, and inspire creativity, preparing our students to be college-, career-, and community-ready.



Ask of the Committee

Adoption by the Board of Education, upon recommendation of the Facilities Committee of Resolution - Washington Early Childhood Center project and acceptance of approximately \$19 Million in Oakland Children's Initiative (OCI) funding to support design and construction.





Overview & Context



Early Childhood Education Overview



Early Childhood = High-Impact Investment

- Kindergarten readiness
- Literacy & numeracy outcomes
- Social-emotional development
- Long-term academic persistence
- Provides critical childcare stability and workforce support for families



Laurel CDC

Planning Goal

Align early childhood investments with:

- Demonstrated community demand
- Equity priorities
- Long-term enrollment stabilization



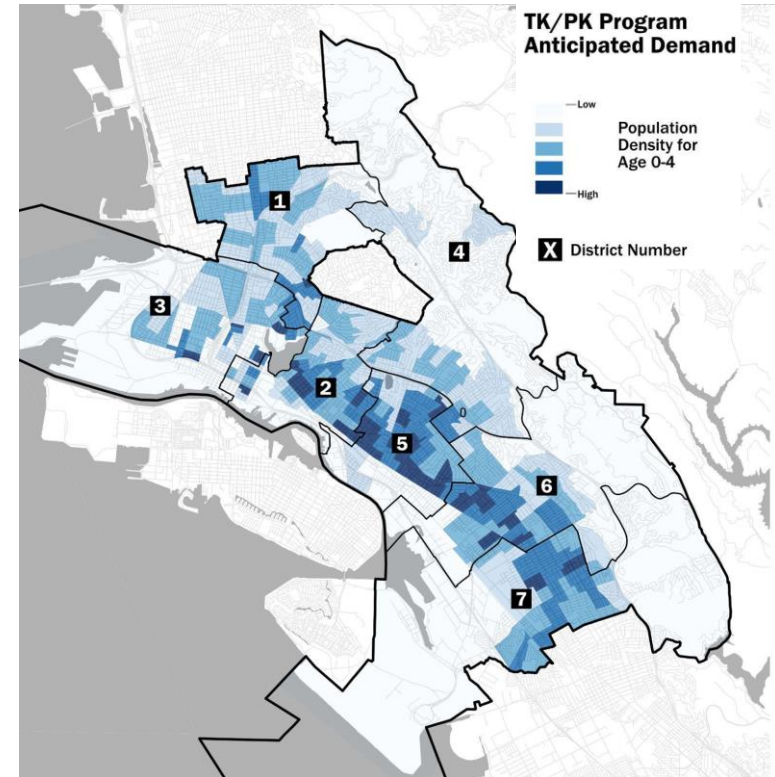
Planning Alignment & Long-Term Planning Strategies

Facilities Context:

- Existing campuses were not designed for universal TK
- Retrofitting spaces is insufficient and inequitable
- Requires:
 - Purpose-built classrooms
 - Outdoor learning space
 - Age-appropriate infrastructure

Strategic Alignment: Supports

- Full Service Community Schools model
- Enrollment stabilization strategy
- Long-term facility optimization





Proposed Project



Why Washington Early Childhood Center at Sankofa Campus

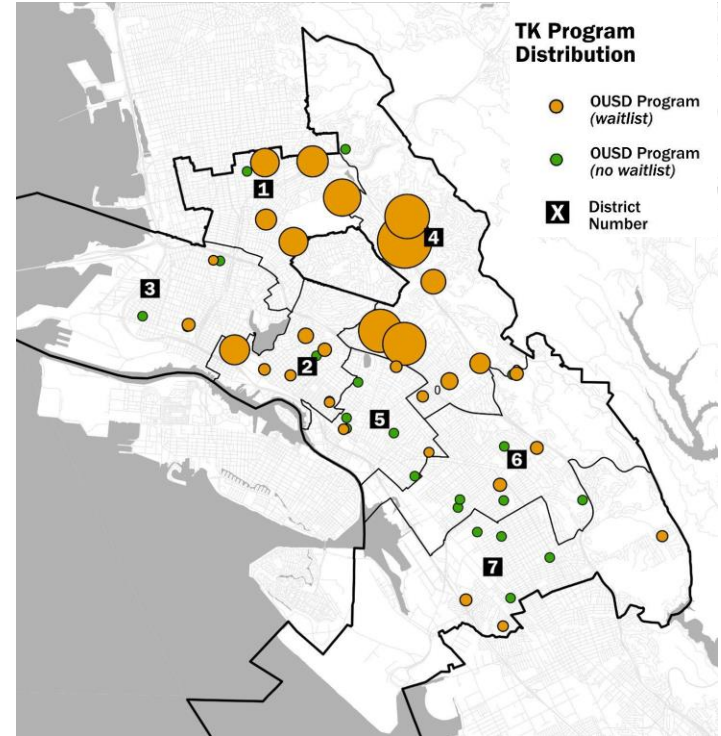
- District 1 has significant unmet early learning demand
- Existing nearby schools have limited ability to expand
- The site can support a purpose-built early learning facility

Access Strategy

- Priority enrollment for income-eligible families
- Mixed-income model supports diverse learning environments

Equity Outcome

- Expands access where:
 - Families face the greatest barriers
 - Capacity is most constrained





Washington CDC - Current Condition



The mural has been graffitied over. The siding on the portable is deteriorating. Grass and weeds are breaking through the asphalt throughout the schoolyard.

Washington CDC - Current Condition





Project Scope

New Construction (Replacing Existing Facility)

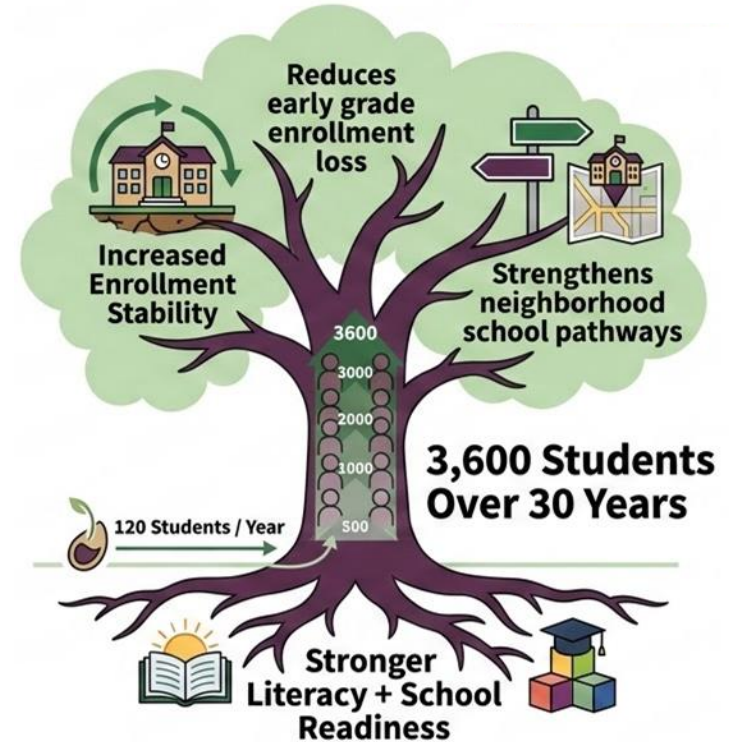
- 3 Preschool (PK) Classrooms
- 3 Transitional Kindergarten (TK) Classrooms
- 2 Dedicated Outdoor Learning Playgrounds

Purpose-Built Design

- Early literacy & play-based learning
- Safe, age-appropriate environments
- Indoor–outdoor integration

Facility Outcome

- Moves away from **portables + converted classrooms**
- Provides **permanent, high-quality early learning space**





Funding Overview

Primary Source:

Oakland Children’s Initiative (OCI): **\$19 Million**

No Impact to Measure Y

Funding Supports:

- Planning & design
- Demolition of existing facility
- New construction
- Outdoor learning/play spaces
- Site infrastructure improvements

Project Schedule

Pre-Planning

SY 2025-26

Planning & Design

SY 2026-27

Construction

SY 2026–27

Project Opening

Target: SY 2027–28



Long-Term Impact of the Washington Project

Educational Continuity

- Establishes a seamless PK → TK → Kindergarten pathway
- Strengthens feeder patterns into:
 - Sankofa
 - Peralta
 - Other District 1 & 4 schools

The Washington Early Childhood Center is an investment in Oakland’s children, families, schools, and long-term community stability





THANK YOU

Preston Thomas, OUSD Chief Executive Officer
Jessica Cannon, Executive Director, Early Childhood
Pranita Ranbhise, Executive Director, Facilities Planning & Management
Michael Ezeh, Director, Accounting Director



**OAKLAND UNIFIED
SCHOOL DISTRICT**
Community Schools, Thriving Students



Context