



OAKLAND UNIFIED
SCHOOL DISTRICT

expect **Success**

School Portfolio Management

School Interventions

**Follow up information requested regarding
recommendations**

December 17, 2008



School Portfolio Management

- I. Review of School Portfolio Management Recommendations**
- II. Response to questions regarding intervention recommendations**
- III. Robeson analysis**
- IV. Robeson Academic and Enrollment Data**



I. Review of School Portfolio Management Recommendations



Phase 1: Dec. 2008 Decision Focus Schools

SUMMARY

	Schools	Challenges for Discussion
Academic & Enrollment (2)	Peralta Creek (Orange)	<ul style="list-style-type: none"> • Identified as Focus School last year • Low academic performance (13% ELA, 6% Math proficiency; 519 API; Orange school) • Reduced to 8th grade only in 08-09 (Decline of -9 8th grade students from 77 to 68) • 110 (of 161 students) out of 1177 neighborhood students attended Peralta Creek in 07-08
	BEST (Orange)	<ul style="list-style-type: none"> • Identified as Focus School last year • Low academic performance (8% ELA CST, 1% Math CST proficiency; 490 API; Orange school; 26% ELA CAHSEE, 24% Math CAHSEE proficiency) • Reduced to no 9th graders in 08-09 to help school focus and support • 150 (of 186 students) out of 814 neighborhood students attended BEST in 07-08 • Saw enrollment declines (-12 students in the last year and -141 students in last 4 years (adjusted for not having 9th graders this year)

The Board also asked staff to do analysis on Robeson as a possible third school for a decision today.



II. Response to Questions Regarding Intervention Recommendations



Response to Questions Regarding 12/10 Recommendations

How will the District address the existing Academies at BEST?

- District will work with ROP programs to develop regional program options for students for Culinary Arts Academy
- EXCEL will continue to support the International Trade, Transportation and Logistics Academy with local political and business partner support



Response to Questions Regarding 12/10 Recommendations

What will happen if not enough students enroll in BEST next year?

- At least 60 students would have to enroll at BEST next year in order to break even financially
- Based on grade progressions for the last two years, the District estimates 65 11th and 12th graders next year

# of students	ADA	Measure E	Title 1	SCE	SIP	Revenues	Expenses
80	\$ 334,240	\$4,362	\$34,028	\$15,225	\$7,462	\$ 395,315	\$299,300
60	\$ 252,718	\$3,298	\$25,521	\$11,419	\$5,642	\$ 298,597	\$299,300
44	\$ 187,500	\$2,447	\$18,715	\$8,374	\$4,186	\$ 221,222	\$299,300

Assumptions	
Salary per teacher (3)	\$93,000
Substitutes	\$6,300
Books, supplies/materials	\$14,000



III. Robeson Analysis



Robeson: Recommendation

Focus School Category: Academic

Recommendation

Phase Out beginning with 9th grade

Financial Analysis

Estimated Total Savings: \$273,873

- Salary savings: \$259,717
- Small School Subsidy: \$14,156

Enrollment Factors

Data: Enrollment

- 08-09 Enrollment: 272
- 1 year change: -46
- 4 year change: -118

Data: Residents

- 2007 Residents: 2059
- 2012 Residents (est): 1563
- Facilities Capacity (approx): 379

Academic Factors

Data

- **OUSD Tier:** Red
- **PI Status:** Year 4. Did not make AYP in 06-07 and 07-08
- **API:** 483. DECREASED by 30 points (2nd lowest of high schools in the district)

Red

Evidence for Recommendation

- Approximately 9% of neighborhood high school students attended Robeson in 07-08
- Approximately 60% of Robeson students were neighborhood students in 07-08 (186 out of 317 non-SDC students)

Evidence for Recommendation

- Did not make AYP last two years
- CST ELA proficiency decreased 14% to 11% in the last year
- CST Math proficiency decreased 3% to 2% in the last year
- A-G graduation rate: 20%
- NCES graduation rate: 48%

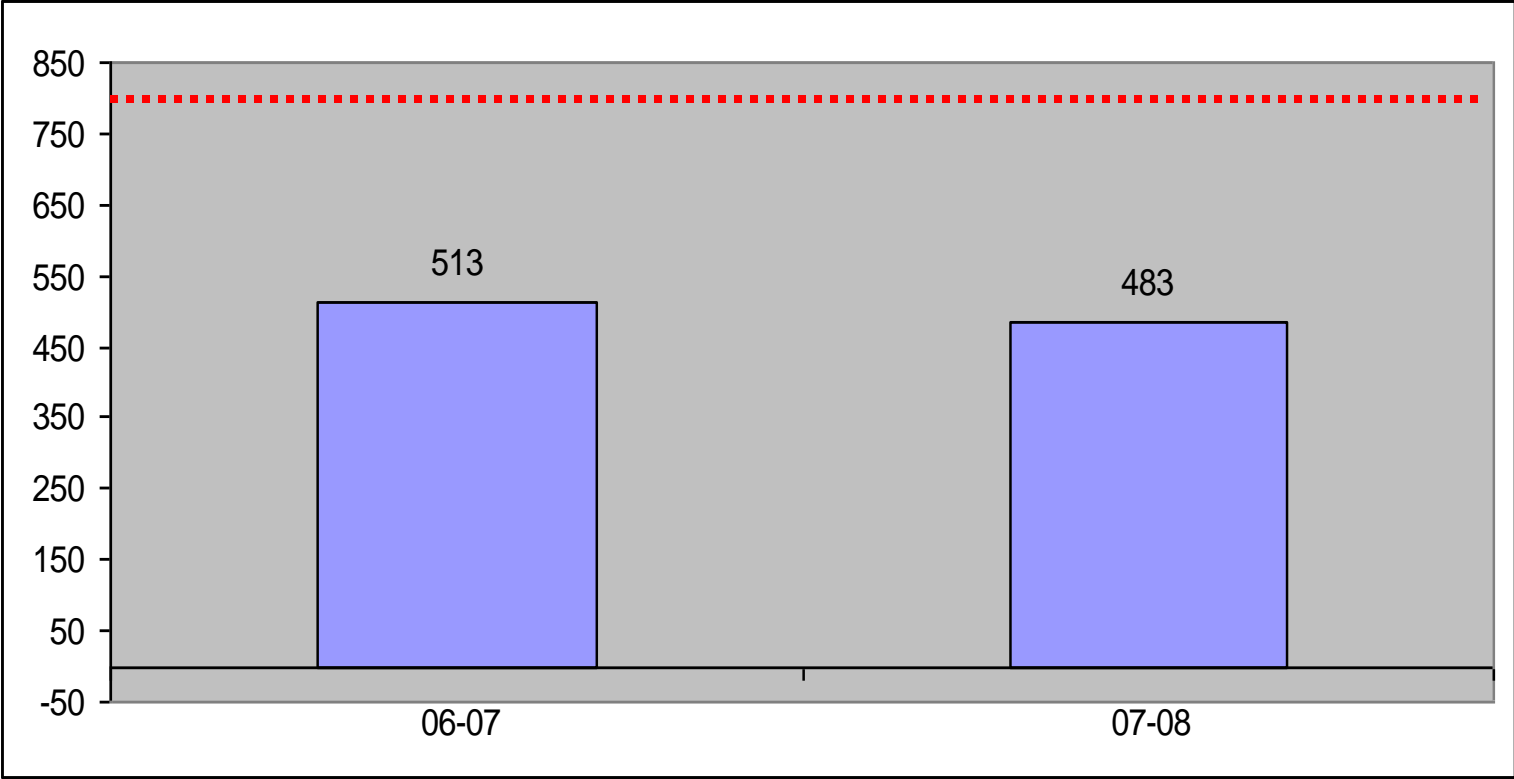


IV. Robeson Academic and Enrollment Data



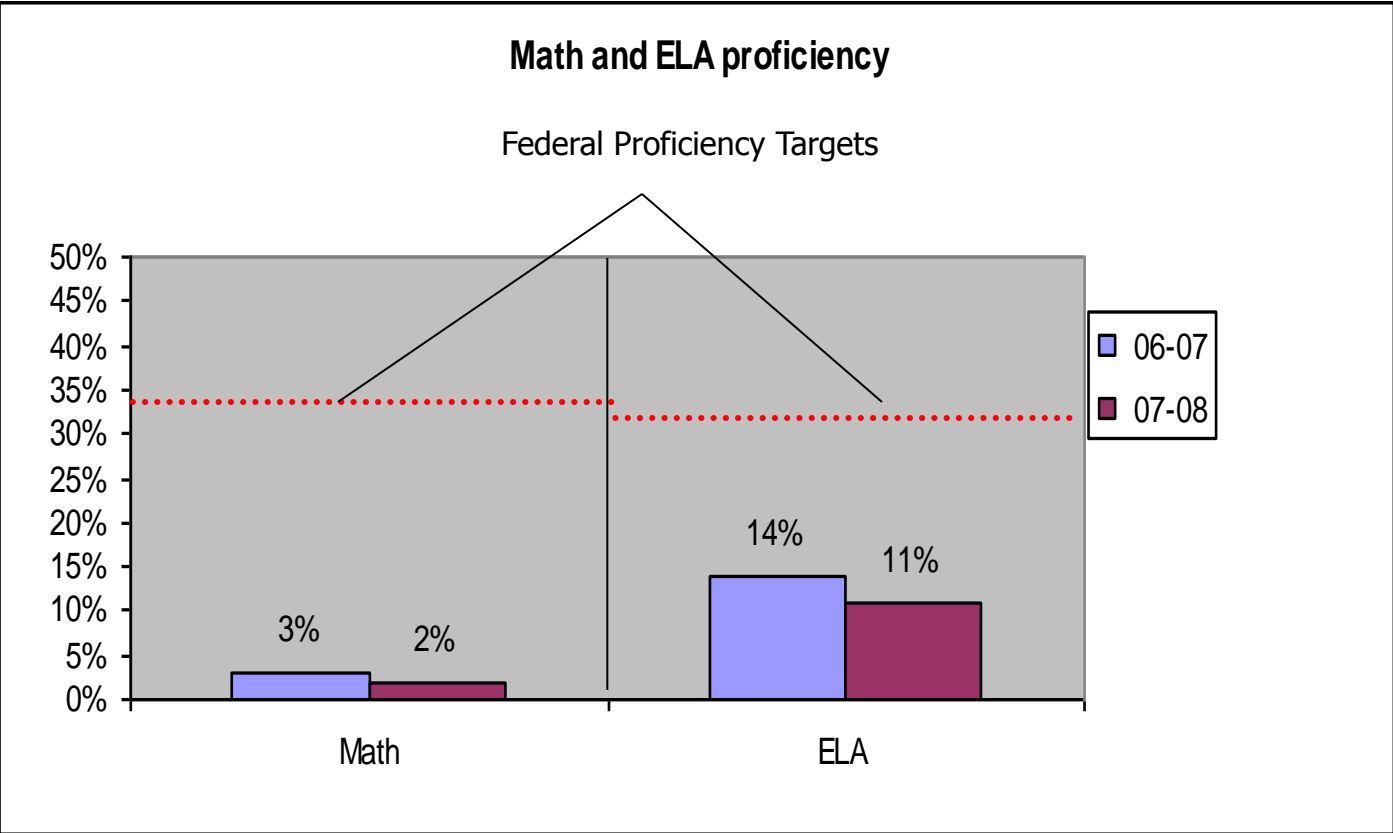
Robeson: Academic Performance Index (API)

API decreased 30 points from 513 to 483



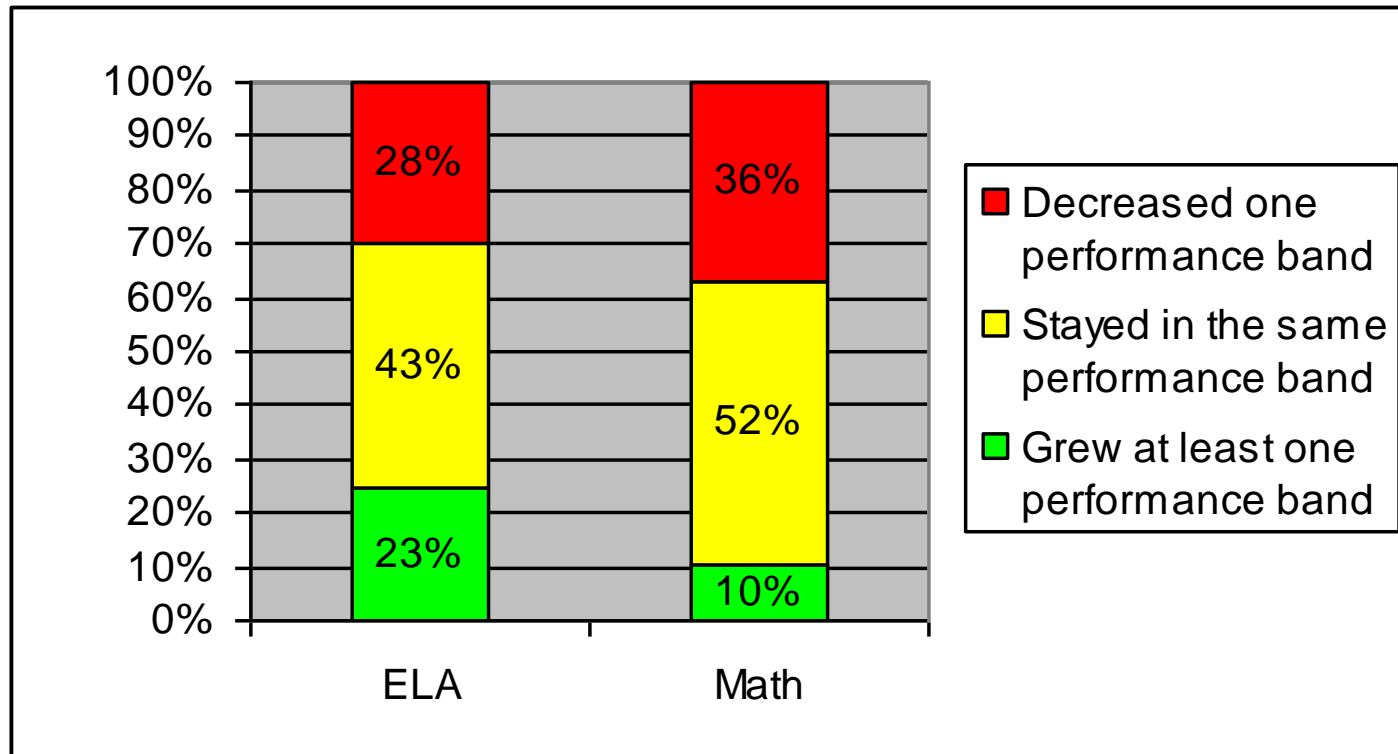
Robeson: Math and ELA CAHSEE Proficiency

Math Proficiency decreased 1% and ELA Proficiency decreased 3%. Overall proficiency is below Proficiency targets (33.4% ELA and 32.2% Math) based on NCLB requirements.



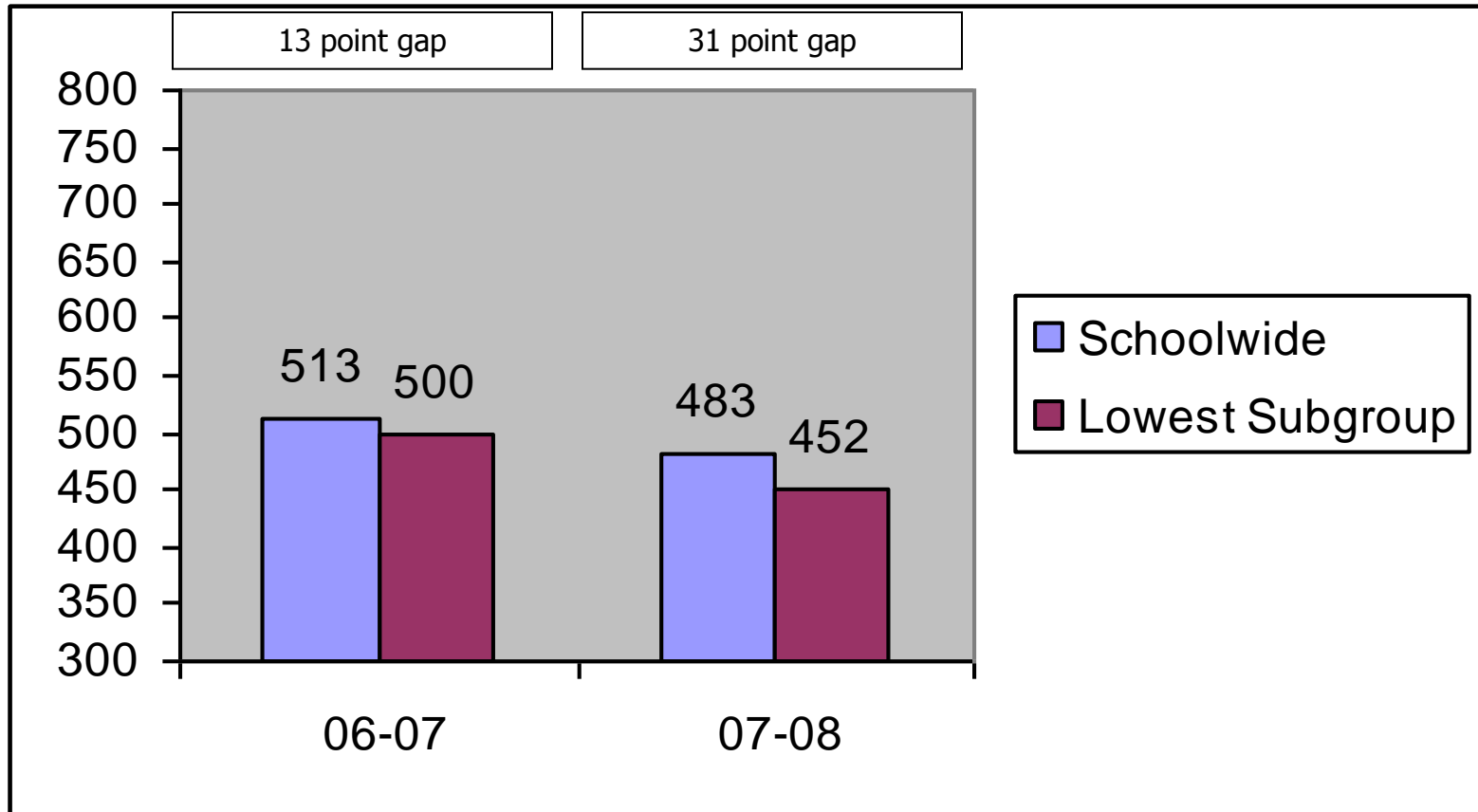
Academic Performance

A significant majority of students are staying flat or declining in academic performance, as measured by the CST



Academic Performance

The gap between schoolwide performance and African American student performance is decreasing, however, overall API growth has decreased 61 points



OUSD Tiered Accountability & Support Model

Based on OUSD's Tiered Accountability & Support Model, BEST has been categorized as an **ORANGE** school

<p><u>TIER</u></p> <ul style="list-style-type: none"> • A combination of Absolute Performance, Growth, and Achievement Gap data • This categorization informs the level of support & intervention a School received 					X
--	--	--	--	--	---

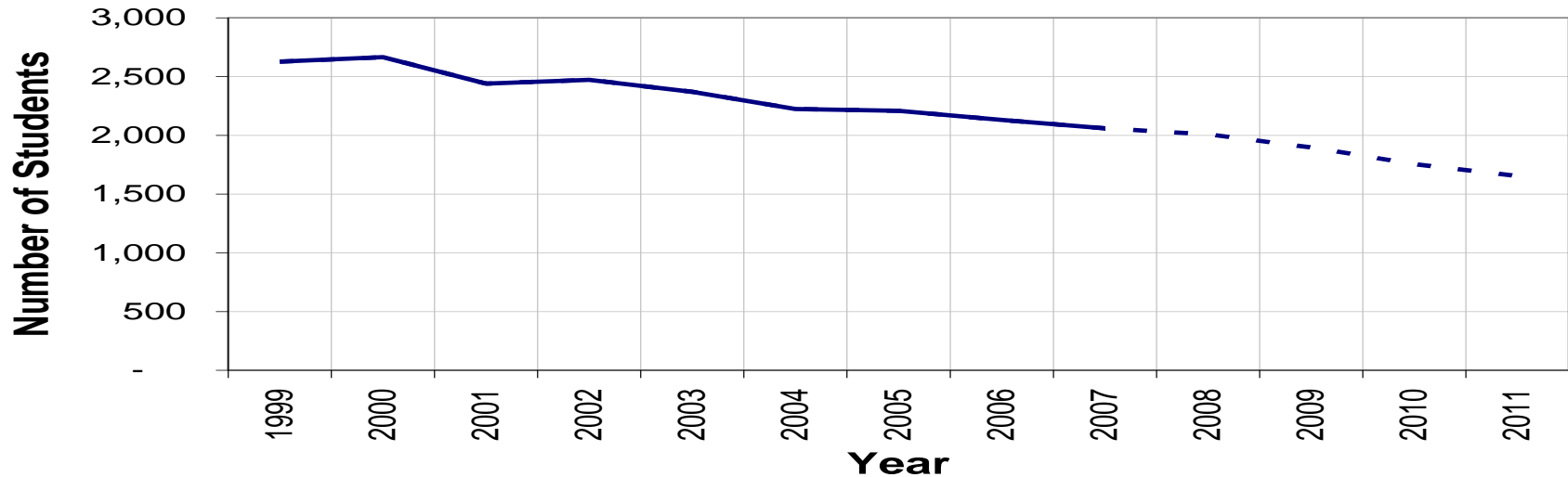
<p><u>Absolute Performance Score</u></p> <p>How is the school performing against Adequate Yearly Progress Targets (AYP)?</p>			X
<p><u>Student Level Growth</u></p> <p>How is the school accelerating achievement for the students who have been in the school for one, two and three years?</p>			X
<p><u>Achievement Gap</u></p> <p>How is the school closing the achievement gap between the school-wide performance and that of the lowest performing sub-groups? Is it above 575 API?</p>			X



Fremont Residents

9th-12th grade residents of the Fremont neighborhood is projected to decline 22% over the next five years

Fremont Residents: Grades 9 to 12



Fremont Residents: 1999-2007

Projected Residents: 2008-2012

	1999	2000	2001	2002	2003	2004	2005	2006	2007	2008	2009	2010	2011	2012
9th	890	986	808	747	710	716	713	701	671	646	595	579	538	547
10th	745	752	720	748	654	621	636	559	592	533	520	476	464	421
11th	550	509	545	556	592	458	471	487	422	475	400	386	353	333
12th	442	418	367	420	414	428	388	384	374	353	381	313	298	262
Total	2,627	2,665	2,440	2,471	2,370	2,223	2,208	2,131	2,059	2,007	1,896	1,755	1,654	1,563

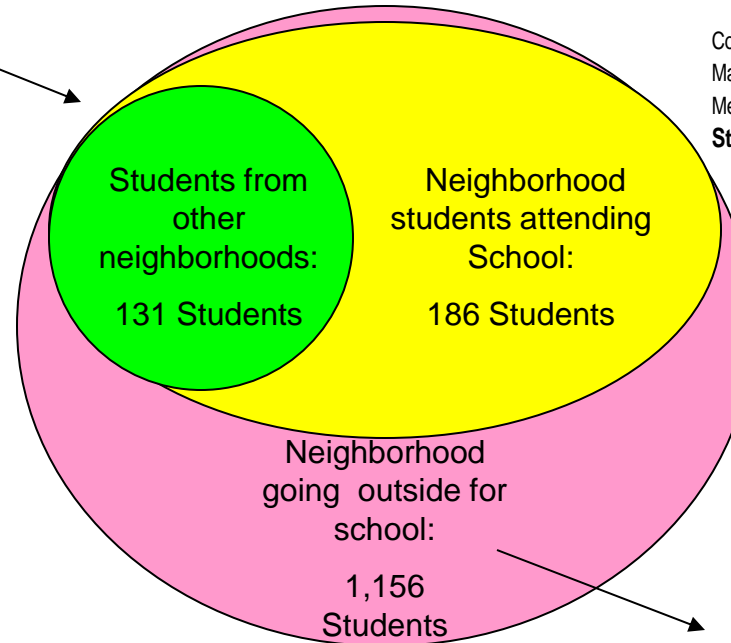


Robeson 2007-2008: Where Students Live and Go to School

9% of students who live in the neighborhood attend Robeson

Number of non SDC students attending: 317

Castlemont	88
Skyline	17
Oakland HS	14
Outside Oakland	5
McClymonds	3
Invalid Formats	3
Oakland Technical	1
Total	131



College Prep & Architecture Academy	249
Mandela HS	243
Media College Prep	225
Students attending other Fremont campuses	717

Skyline	261
Oakland HS	250
Oakland Technical High School	164
Life Academy	110
Dewey Academy	66
Ralph Bunche High School	65
MetWest	36
Sojourner Truth Independent Study	34
Youth Empowerment School	30
Far West	24
Street Academy	24
Oakland International High	20
East Oakland School of the Arts	18
Business & Information Technology	14
Leadership Preparatory HS	10
Rudsdale Continuation	10
Business Entrepreneurial Technology High (BEST)	9
E.X.C.E.L. College Preparatory H.S.	7
Community Day HS	4
Total	1156

Number of OUSD high school students living in the neighborhood: 2,059

