

# Summary Presentation of Results From a Survey of Likely Voters in the Oakland Unified School District

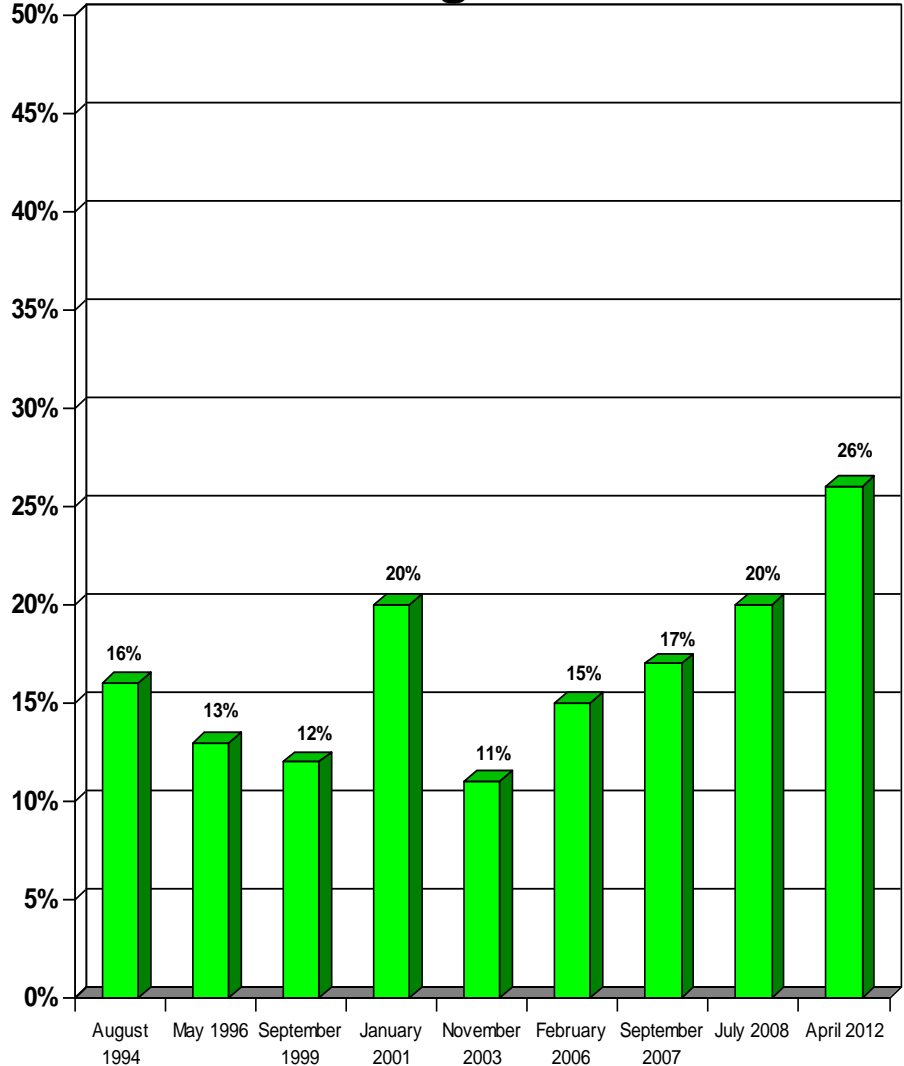
*600 Interviews  
April 2012*

*conducted by*

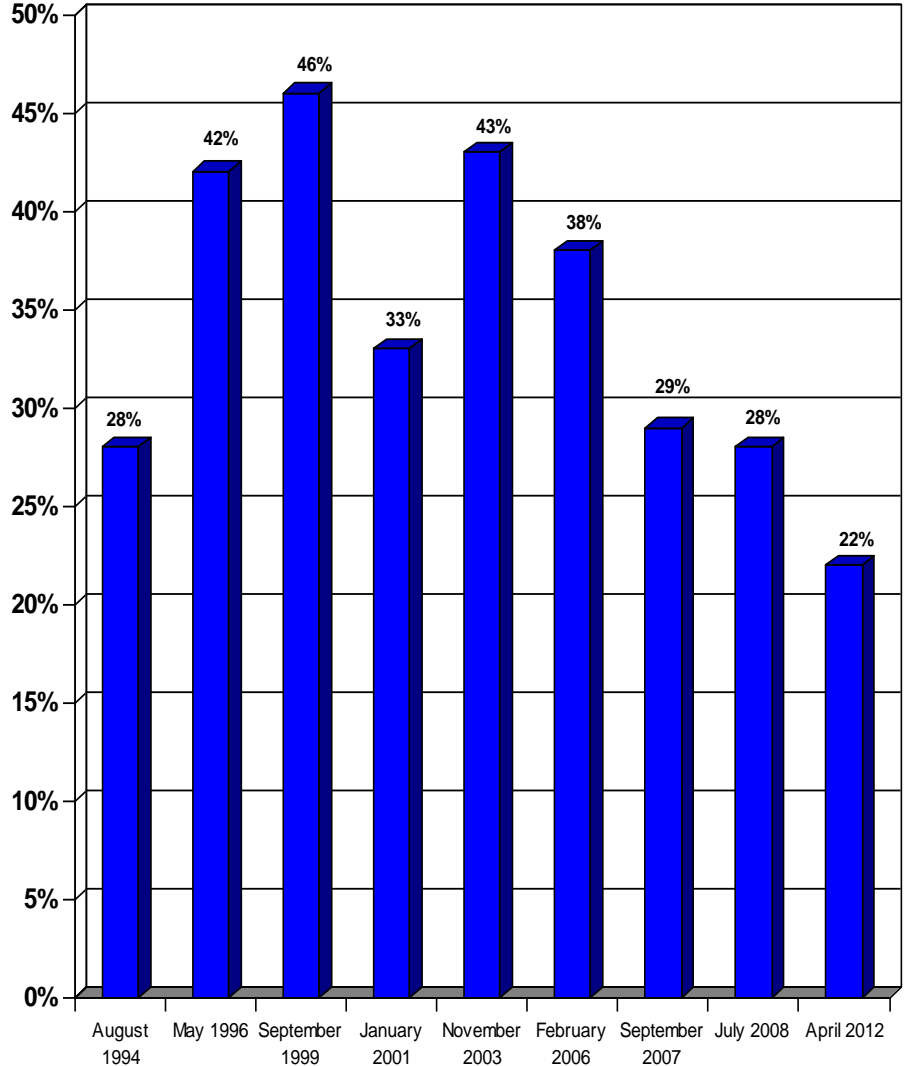


**GENE BREGMAN & ASSOCIATES**  
*Public Opinion & Marketing Research*

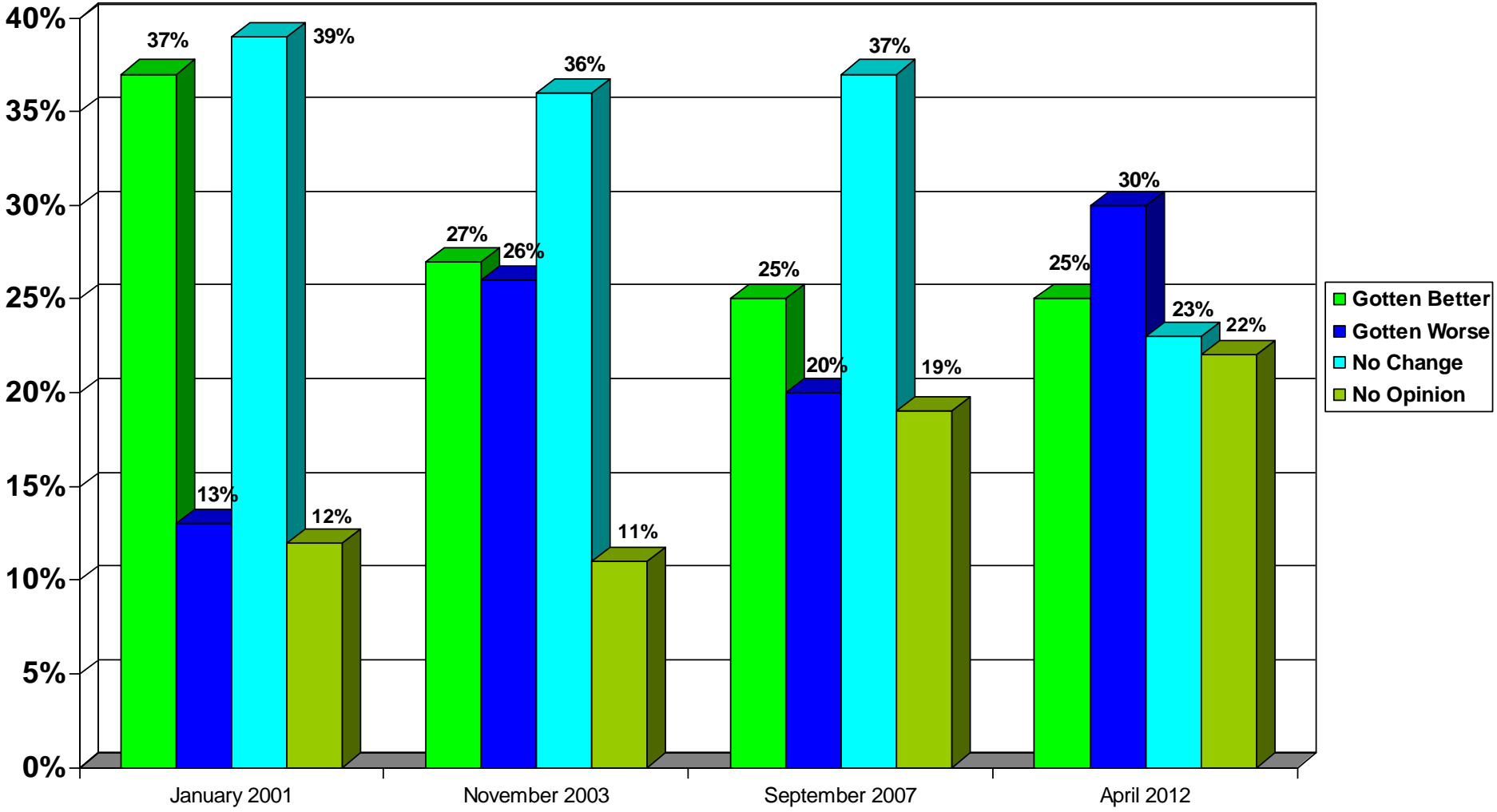
### Comparison of Excellent/Good Job Ratings for OUSD



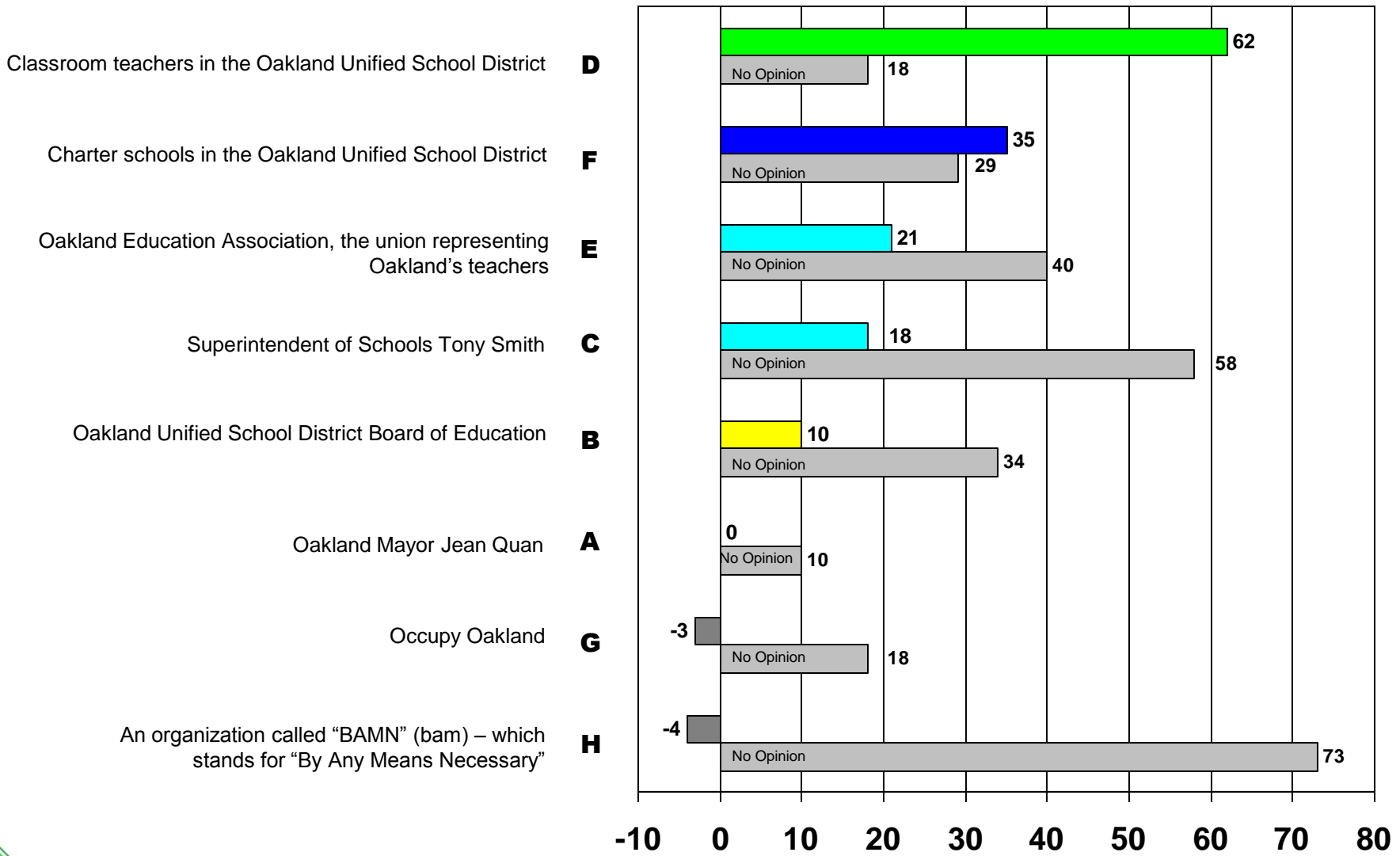
### Comparison of Poor Job Ratings for OUSD



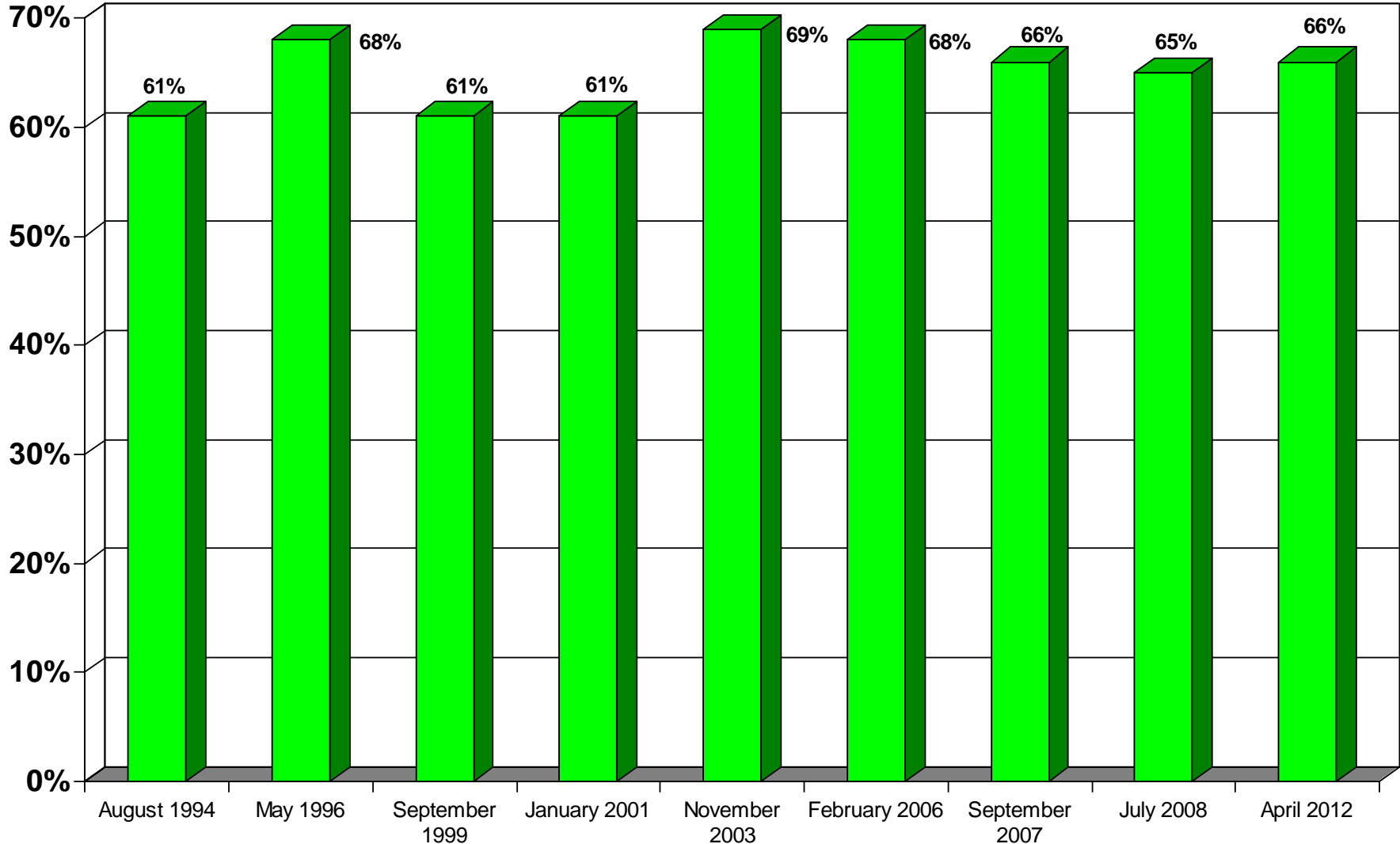
# Comparison of Quality of Education in OUSD in Recent Past 2-3 Years



# Net Favorability Scores: People/Organizations in Oakland

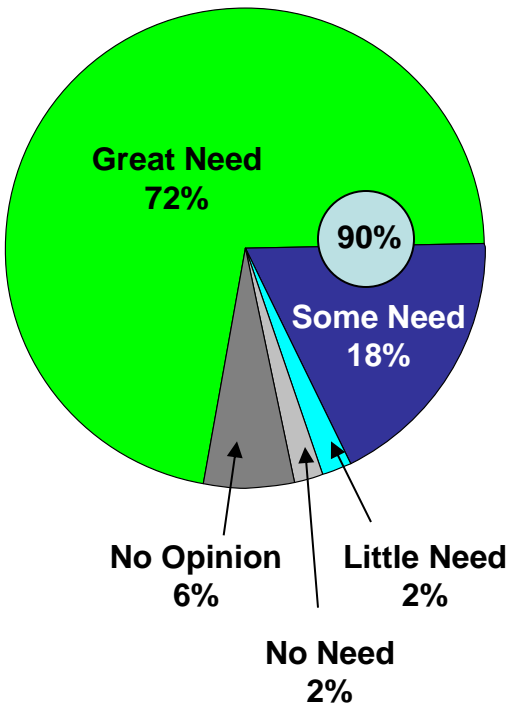


# Comparison of Great Need for More Money in OUSD

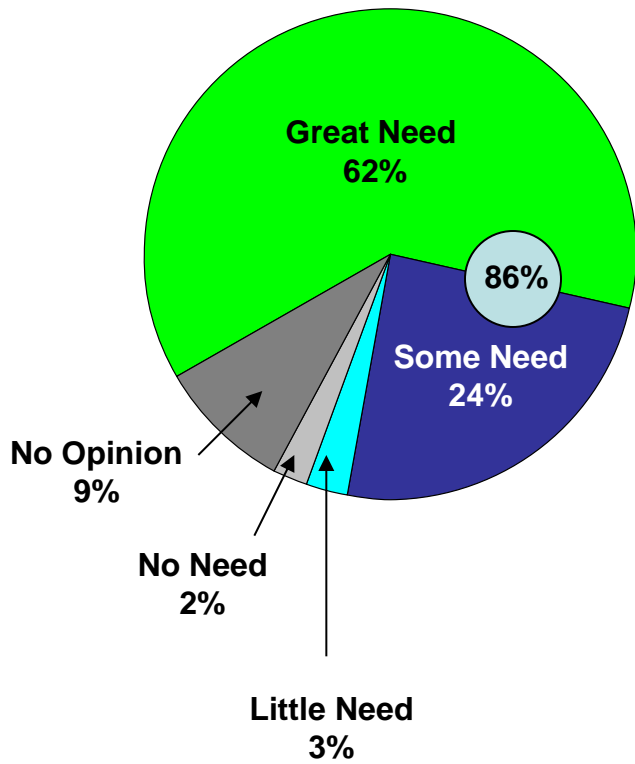


# Need to Repair/Rehabilitate Oakland Public Schools

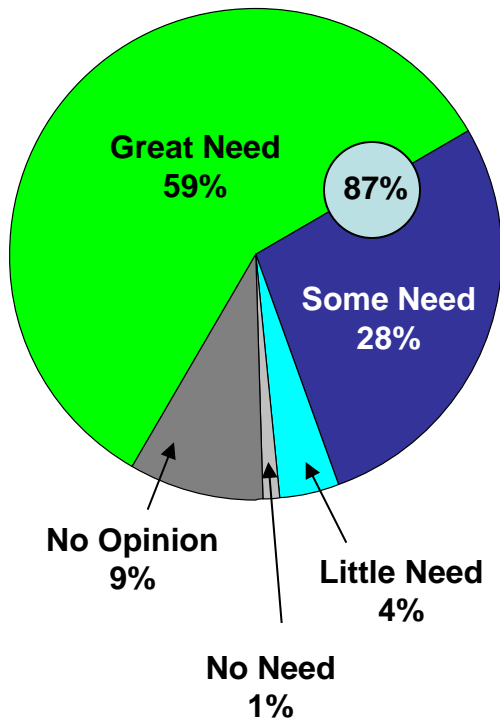
September 1999



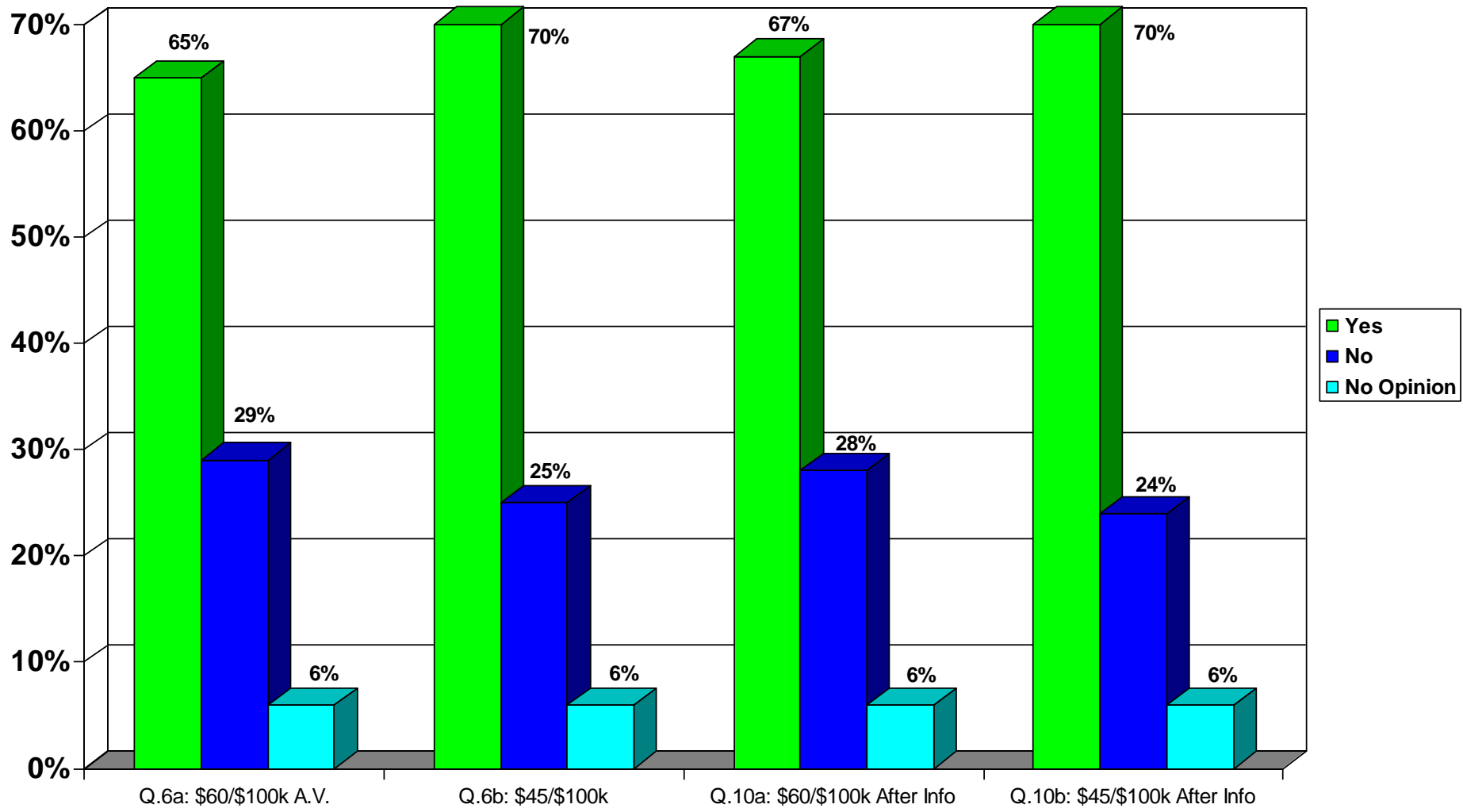
February 2006



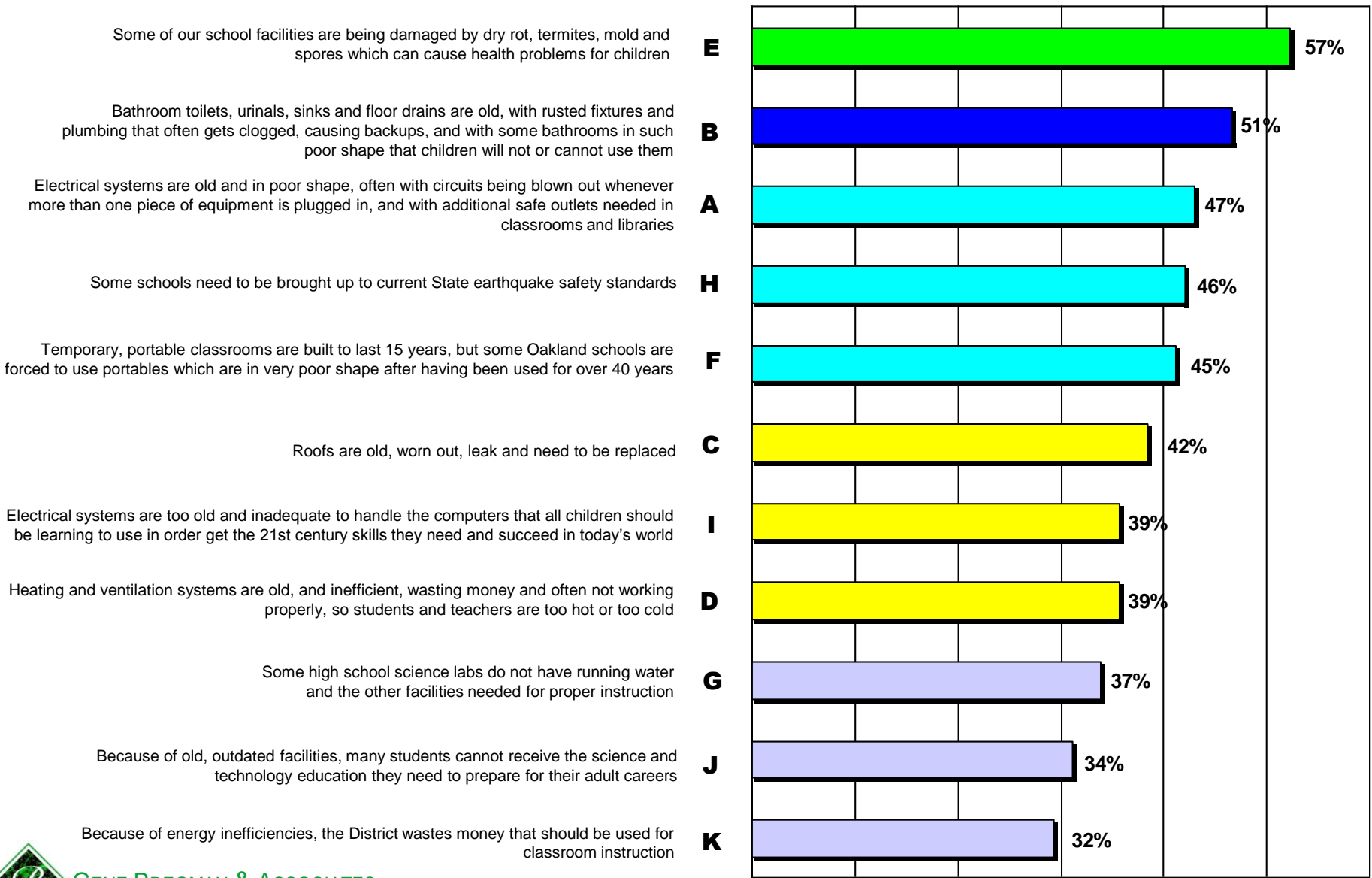
April 2012



# Four Votes on \$475 Million Bond Measure for OUSD

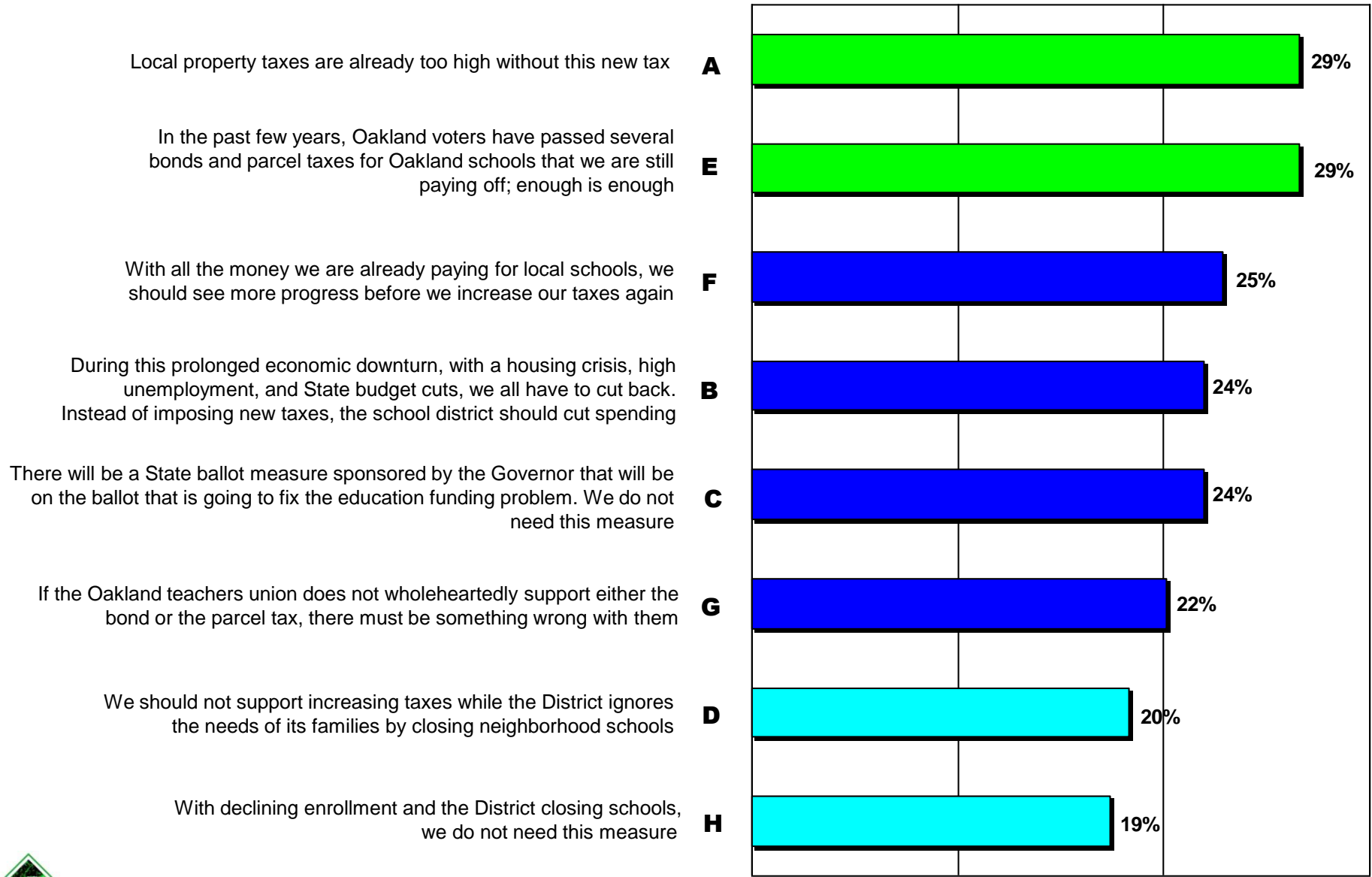


# Extremely Serious Ratings for Problems to be Addressed by Bond

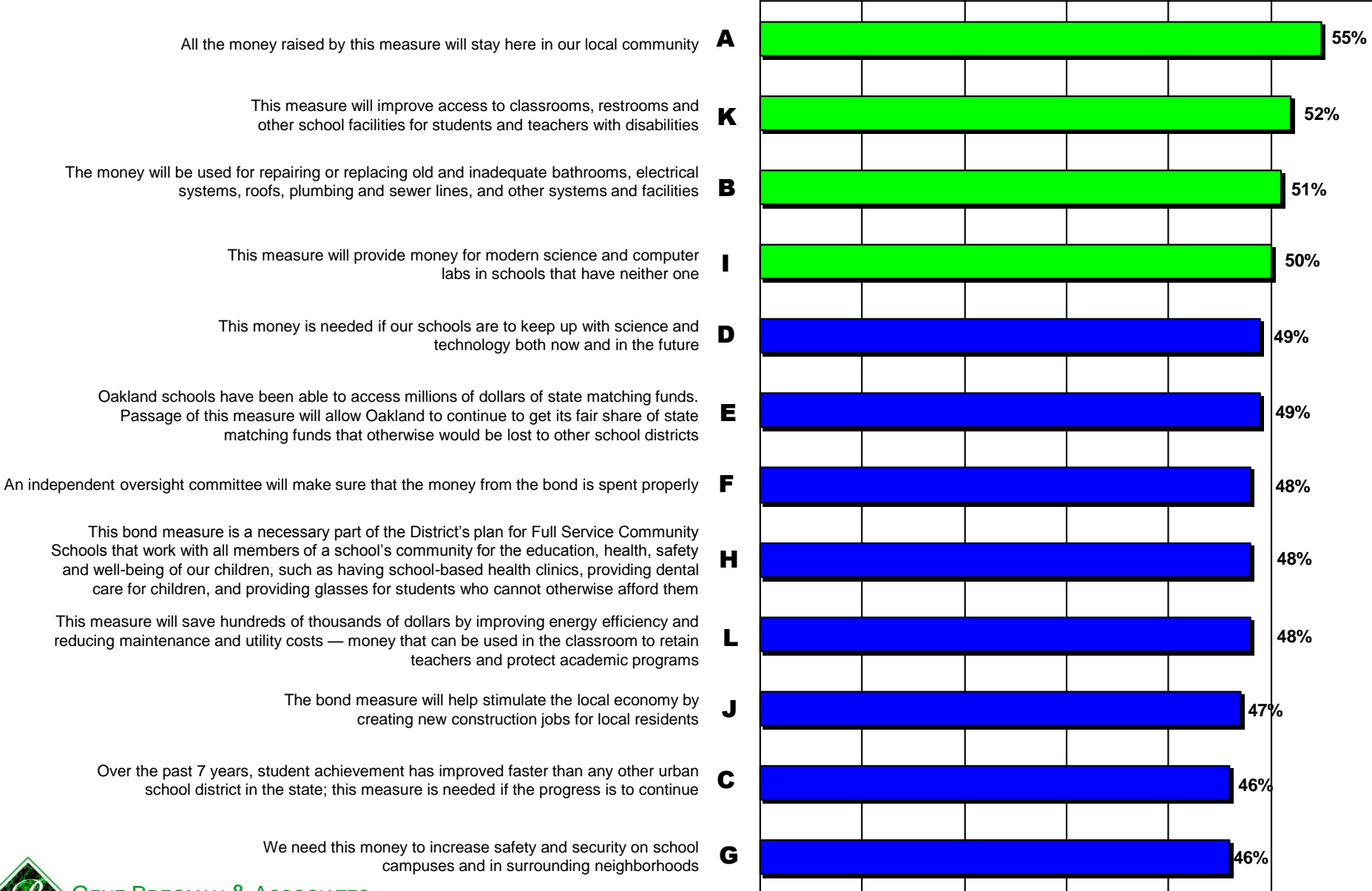




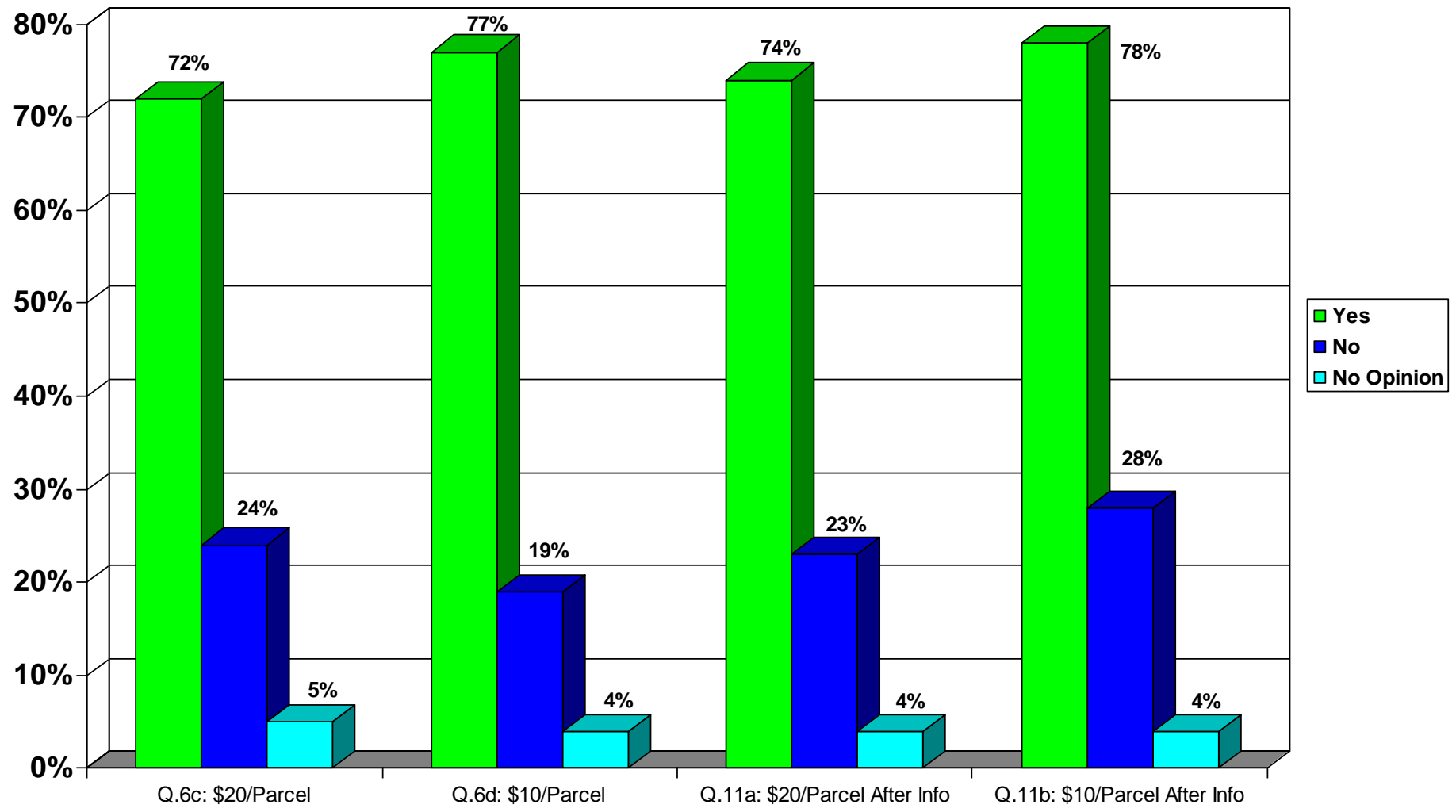
# Reasons Much More Likely to Oppose Bond Measure



# Reasons Much More Likely to Favor Bond Measure



# Four Votes on Parcel Tax Measure for OUSD



# Comparison of Initial "Yes" Votes with Previous Surveys

