



**ROSES**  
**INC CONCRETE**

A community responsive lab school  
to serve East Oakland and OUSD

Jeff Duncan-Andrade, PhD  
Associate Professor  
Raza Studies and Education  
San Francisco State University  
Director, Educational Equity Initiative  
Institute for Sustainable Economic, Educational,  
and Environmental Design (ISEEED)  
[jandrade@iseeed.org](mailto:jandrade@iseeed.org)

# If we do nothing differently...

The concrete

The classroom

"School"



# If we do nothing differently...

The concrete

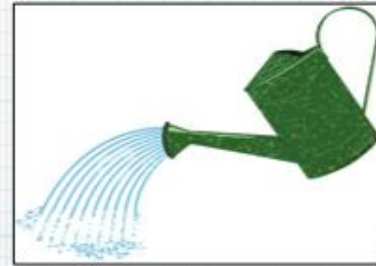
The classroom

"School"



# If we innovate: East Oakland Step to College

The classroom



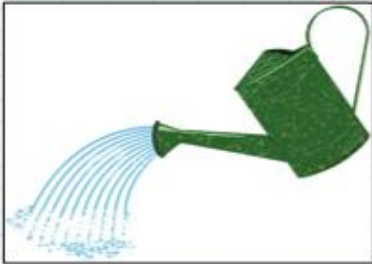
The concrete



"School"

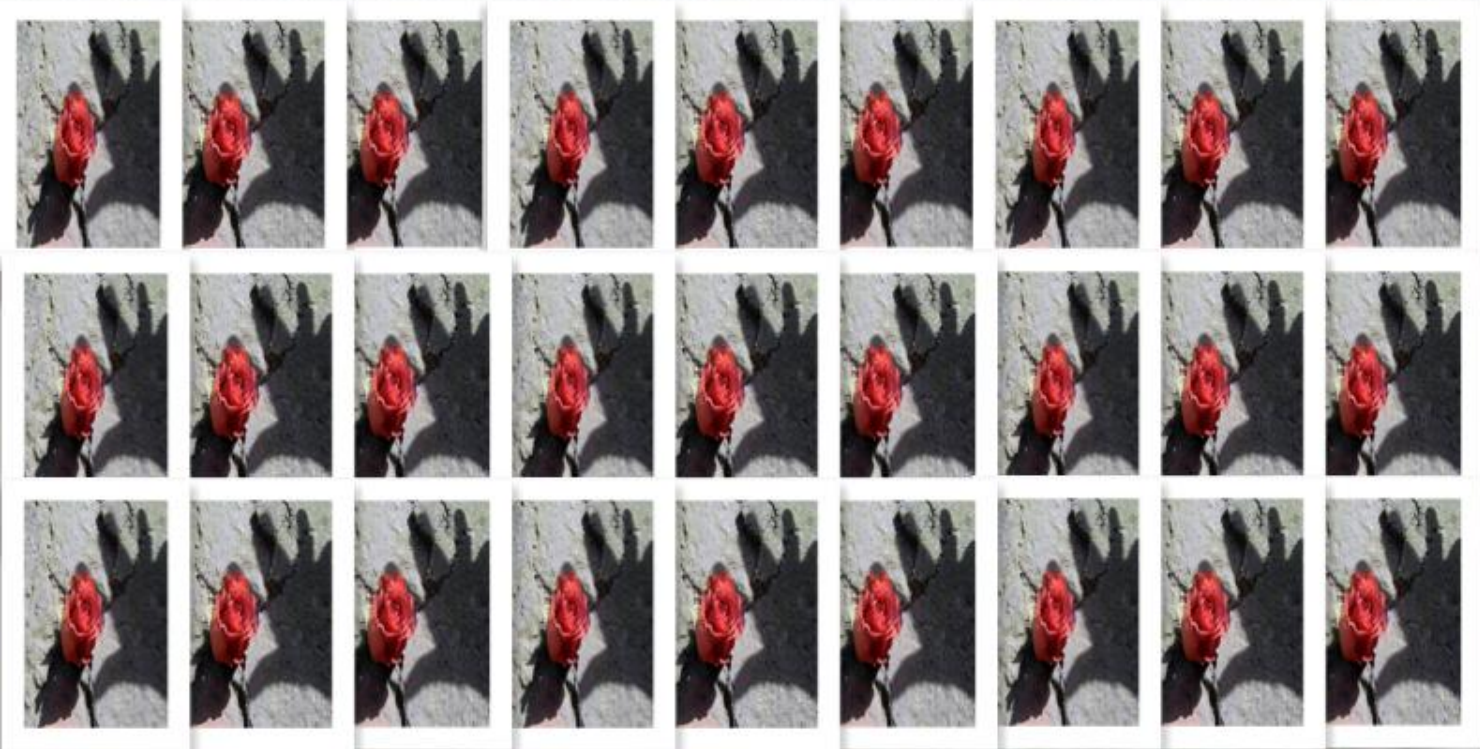
# If we innovate: East Oakland Step to College

The classroom

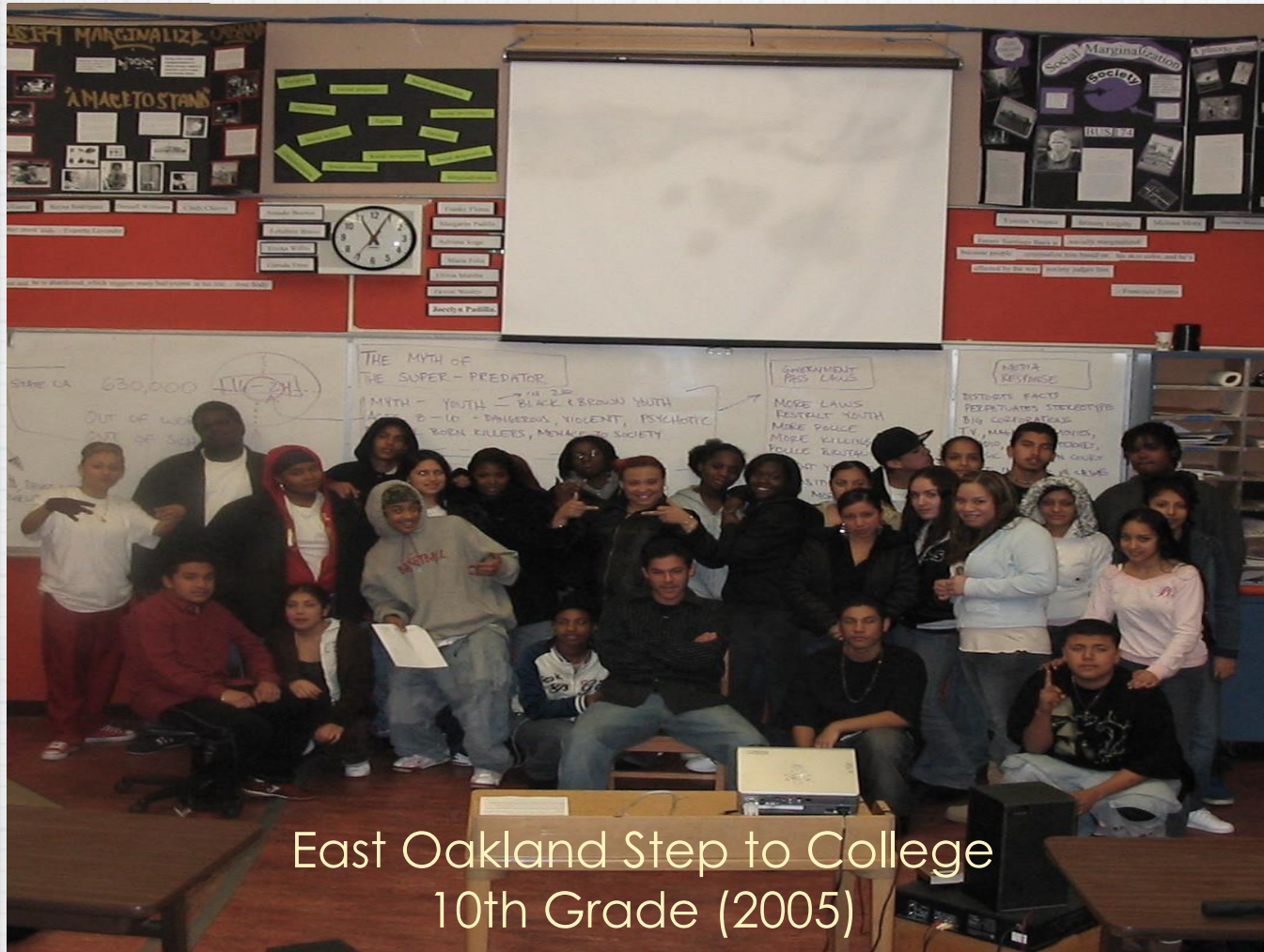


The concrete

"School"



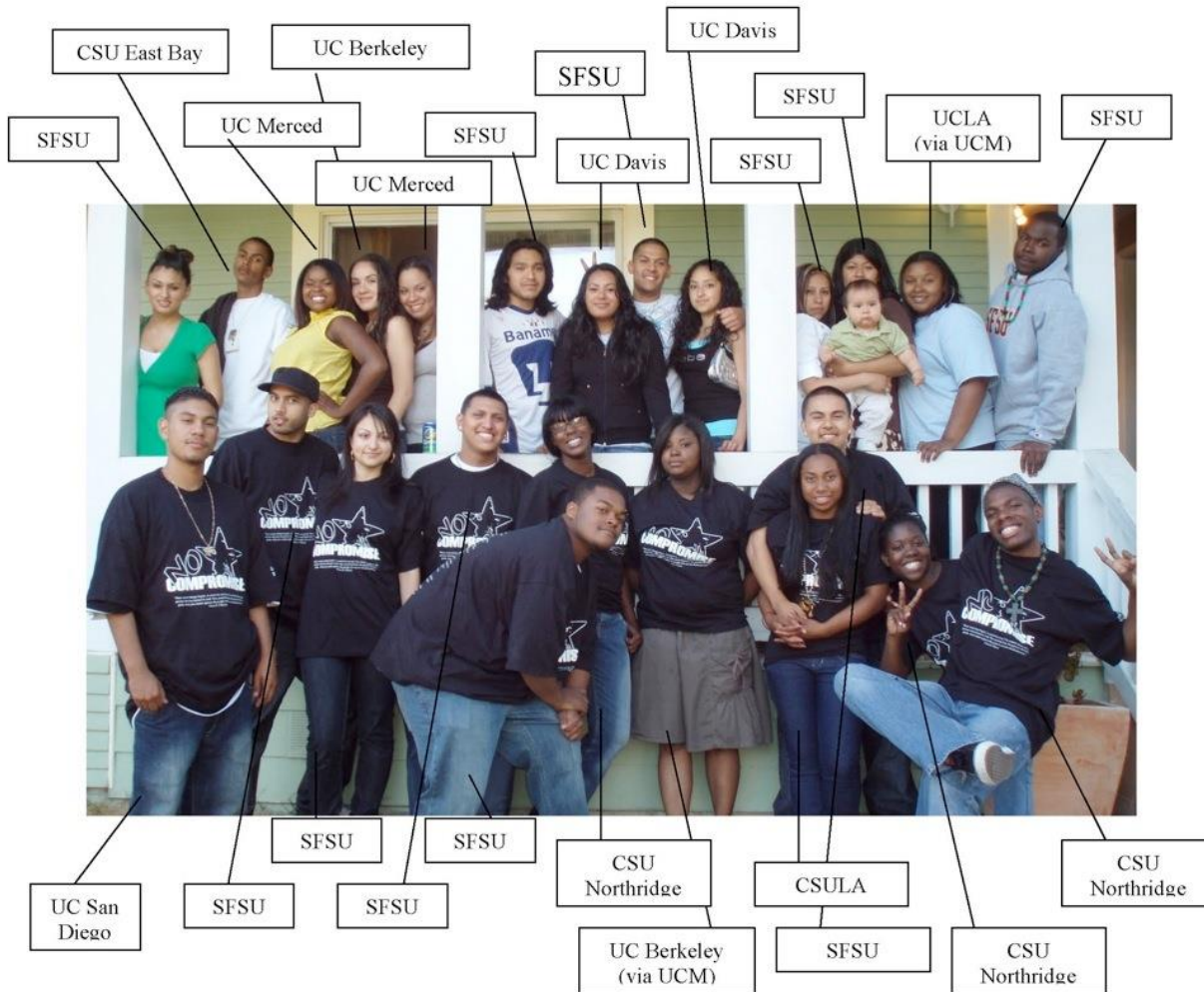
# East Oakland Step to College (2004)



30 students in a  
multi-year loop

- 15 self select
- 15 targeted recruitment
- Avg GPA: 2.19

# East Oakland Step to College (2008)



**2008 Cohort**

- 70% retention\*
- 92% 4 year college attendance

**vs East Oakland OUSD**

- 23% graduate
- 5% college eligible

**East Oakland Step to College (2013)**

**Remix & Repeat**



# East Oakland Step to College (2013)

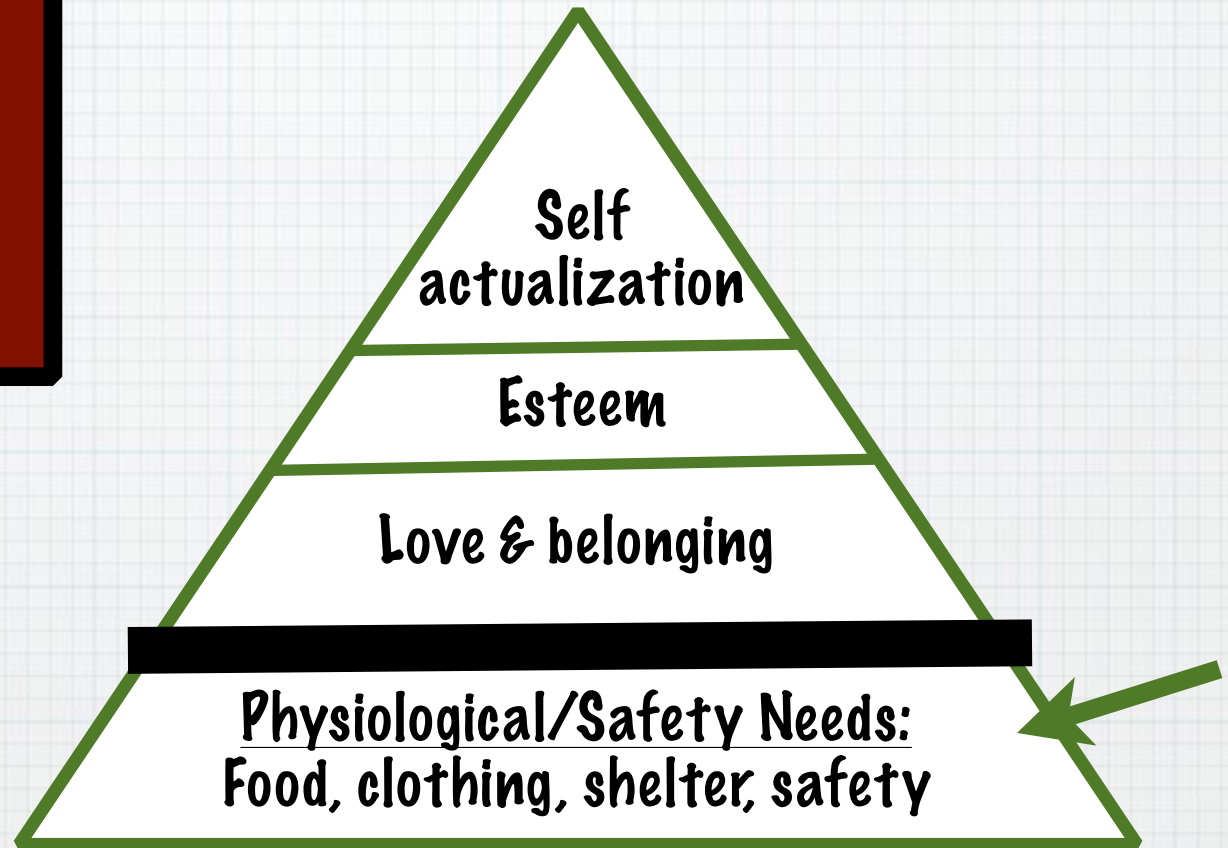


95%

4-year college attendance

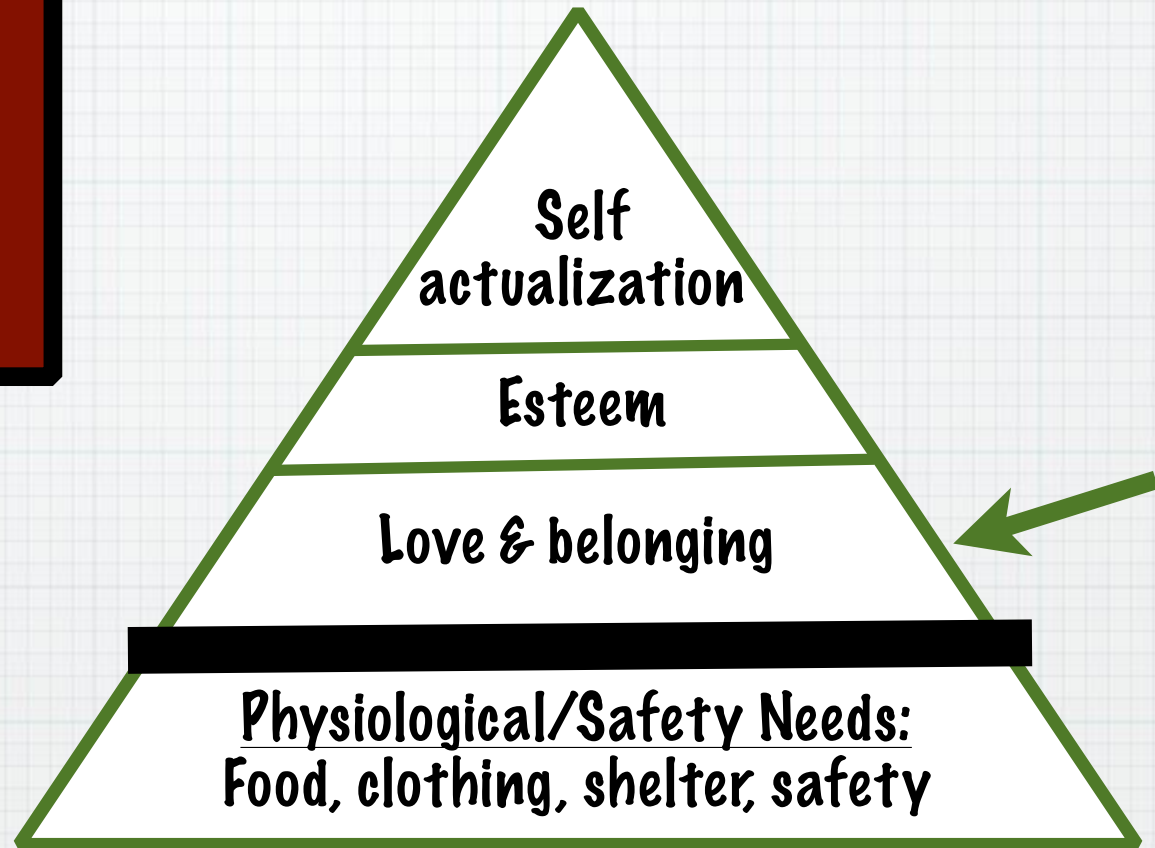
# How we've done it: A basic needs framework

## Maslow's Hierarchy of Needs



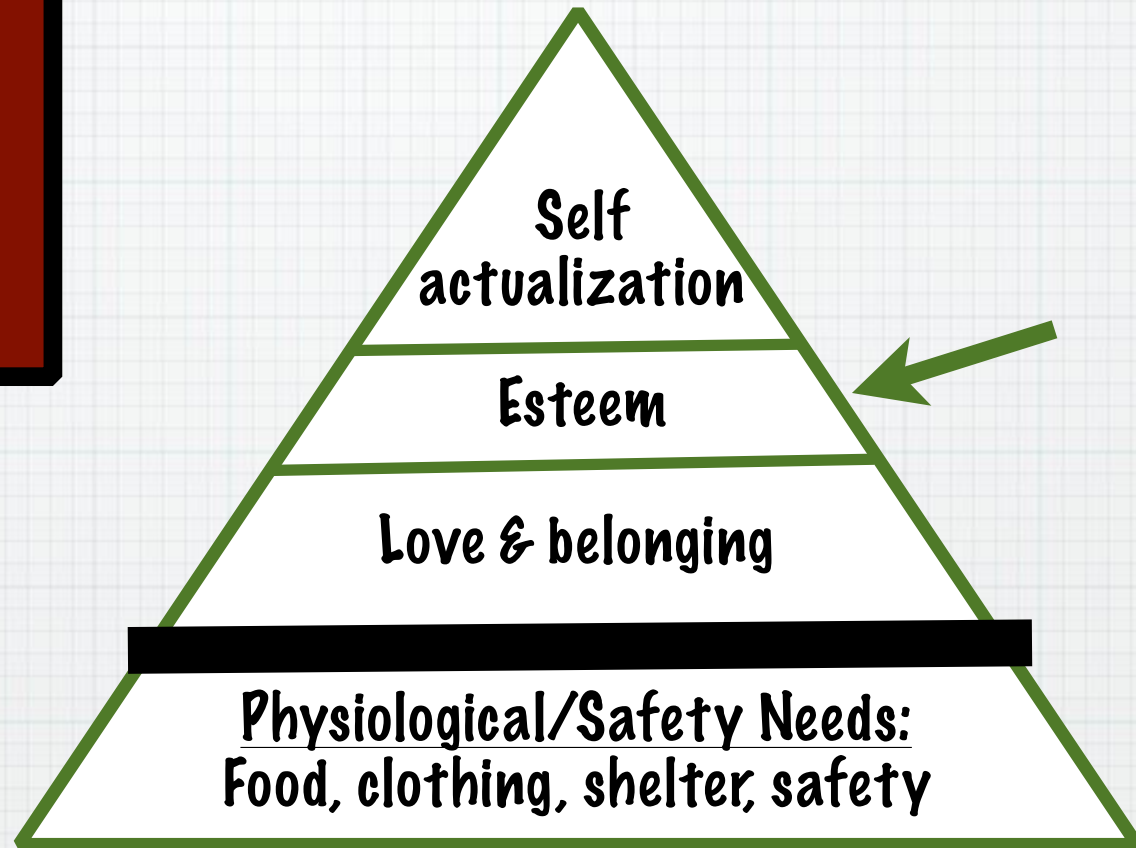
# How we've done it: A basic needs framework

Maslow's  
Hierarchy of  
Needs



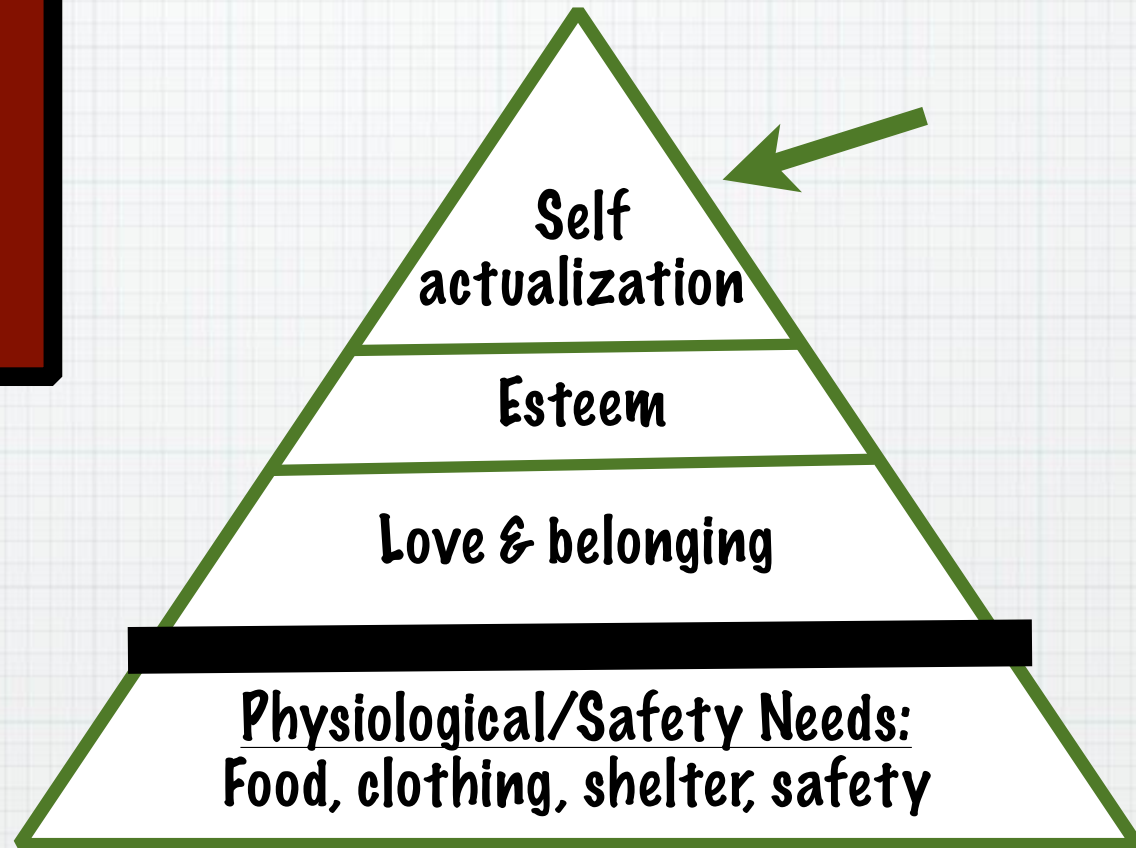
# How we've done it: A basic needs framework

Maslow's  
Hierarchy of  
Needs



# How we've done it: A basic needs framework

Maslow's  
Hierarchy of  
Needs



**It's not enough**



**ROSES**  
**INC CONCRETE**

A community responsive K-8 school, !  
serving youth and families in East  
Oakland's most vulnerable  
neighborhoods...!

ALL the families in the neighborhood

# Key Strategies for Continued Success

- Robust community and university partnerships to meet the demands of Maslow's Hierarchy of Needs



# Key Strategies for Continued Success

- Robust community and university partnerships to meet the demands of Maslow's Hierarchy of Needs
- Looping bands (K-1, 2-3, 4-5, and 6-8)

# Key Strategies for Continued Success

- Robust community and university partnerships to meet the demands of Maslow's Hierarchy of Needs
- Looping bands (K-1, 2-3, 4-5, and 6-8)
- Veteran, accomplished educators in the classroom, working alongside apprenticing educators

# Lab School: OUSD as Epicenter of Urban School Change

- Partnerships with SFSU, USF, Mills, and Stanford

# Lab School: OUSD as Epicenter of Change

- Partnerships with SFSU, USF, Mills, and Stanford
- Develop, document, and disseminate community responsive pedagogy and curriculum

# Lab School: OUSD as Epicenter of Change

- Partnerships with SFSU, USF, Mills, and Stanford
- Change the conversation about how teachers are recruited, developed, and supported

# Lab School: OUSD as Epicenter of Change

- Partnerships with SFSU, USF, Mills, and Stanford
  - Change the conversation about how teachers are recruited, developed, and supported
  - Multi-year teacher apprenticeships in every classroom (undergrad & grad)

# Lab School: OUSD as Epicenter of Change

- Partnerships with SFSU, USF, Mills, and Stanford
- Change the conversation about how teachers are recruited, developed, and supported
  - Recruitment and pre-service: Multi-year teacher apprenticeships
  - Support and development: Teaching Excellence Network (TEN)  
—“teachers teaching teachers”

# Lab School: OUSD as Epicenter of Change

- Partnerships with SFSU, USF, Mills, and Stanford
- Multi-year administrator apprentices



**Cultivating Warrior-Scholars:  
Reclaiming Definitions of Success  
for Our Children**

