



OAKLAND UNIFIED  
SCHOOL DISTRICT

*Community Schools, Thriving Students*

---

# Parker Elementary TK-8 School Expansion

April 9, 2014

v3

*Community Schools, Thriving Students*

# Our Vision

2

## To create a TK-8 School that...

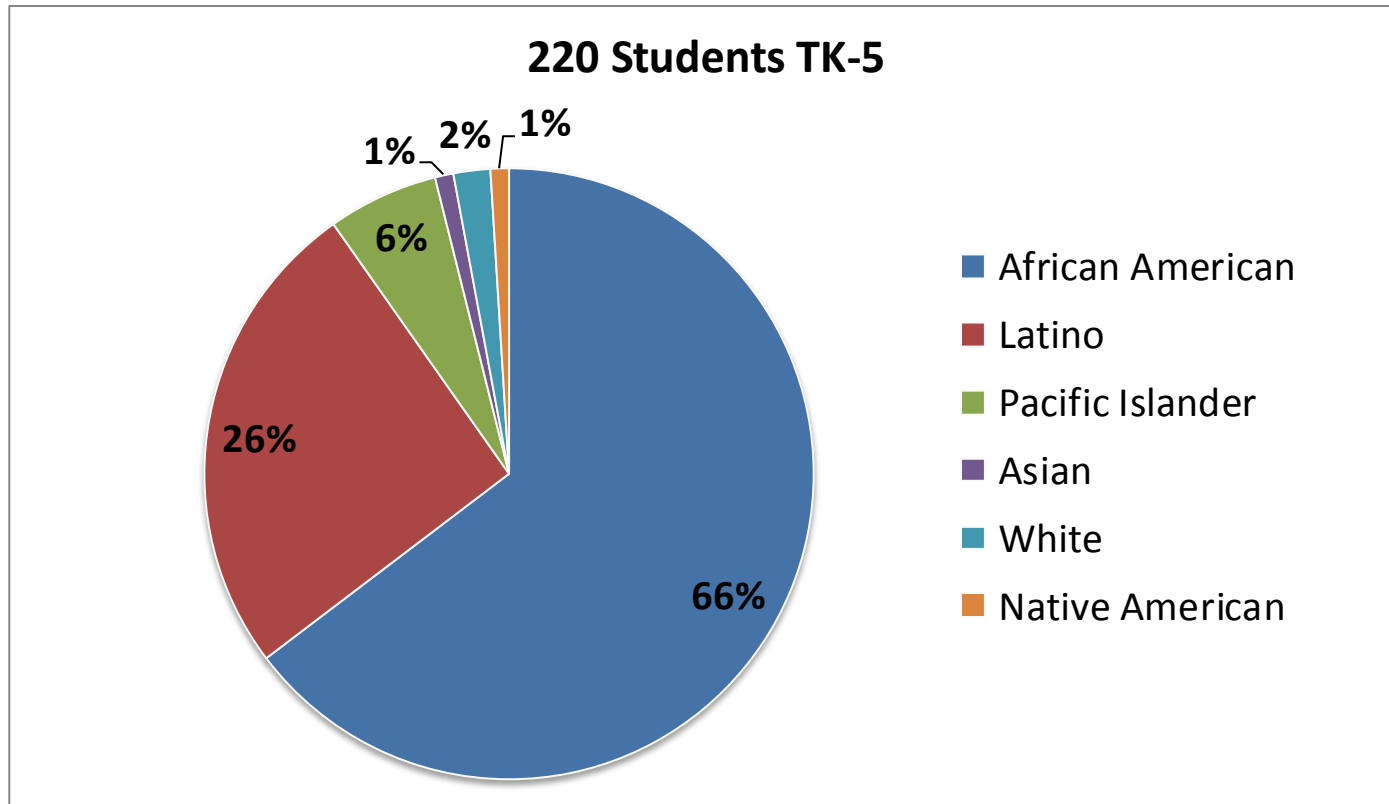
- Delivers academic excellence
- Produces focused scholars who positively impact our world
- Nurtures the whole child (mind, body and soul)
- Forms effective partnerships with families and community resources



# Who We Are...

3

- A Community of Scholars
- A CORE Rewards School
- A School Dedicated to Equity and High Achievement for All



*Community Schools, Thriving Students*





Parker  
Strings & Band  
Mr. Arthur Lookett, Musical Director

"Jingle Bells"





7

# Parker Scholars

**ENGAGE.**

*Preservation of one's own culture does not require contempt or disrespect for other cultures."*

César Chávez



**Community Schools, Thriving Students**



# Parker Accomplishments

8

- Highest performing school in East Oakland
- API 852, ranked 7 of 10 statewide and 10 of 10 compared to similar schools
- Top 15 for Lexile Growth of SRI Assessment 2. Rated Top 3 of 86
- Only OUSD school to increase Proficient/Advanced rate in both Math and Science on CST
- Nominated as California Distinguished School 2012 and 2013

*Community Schools, Thriving Students*





# Parker Accomplishments

9

- Highly effective school culture approach that emphasizes student responsibility and leadership
- STEM and Literacy Focus School that utilizes a Balanced Literacy Framework
- Culturally Responsive Pedagogy model which supports all students and builds strong community engagement
- Collaborative model with cohesive Professional Learning Communities and effective teacher leader structure
- Effective Partnerships with Community

*Community Schools, Thriving Students*

# Why Expand Parker Elementary?

10

Parker provides academic excellence in a safe and healthy school environment with strong family engagement and community partnerships.

Oakland needs more high achieving middle schools that respond to students' needs and support students to develop their intellectual curiosity and socio-emotional development.

PreK-8

Parker is rated as the community's first choice school 100% of the time.

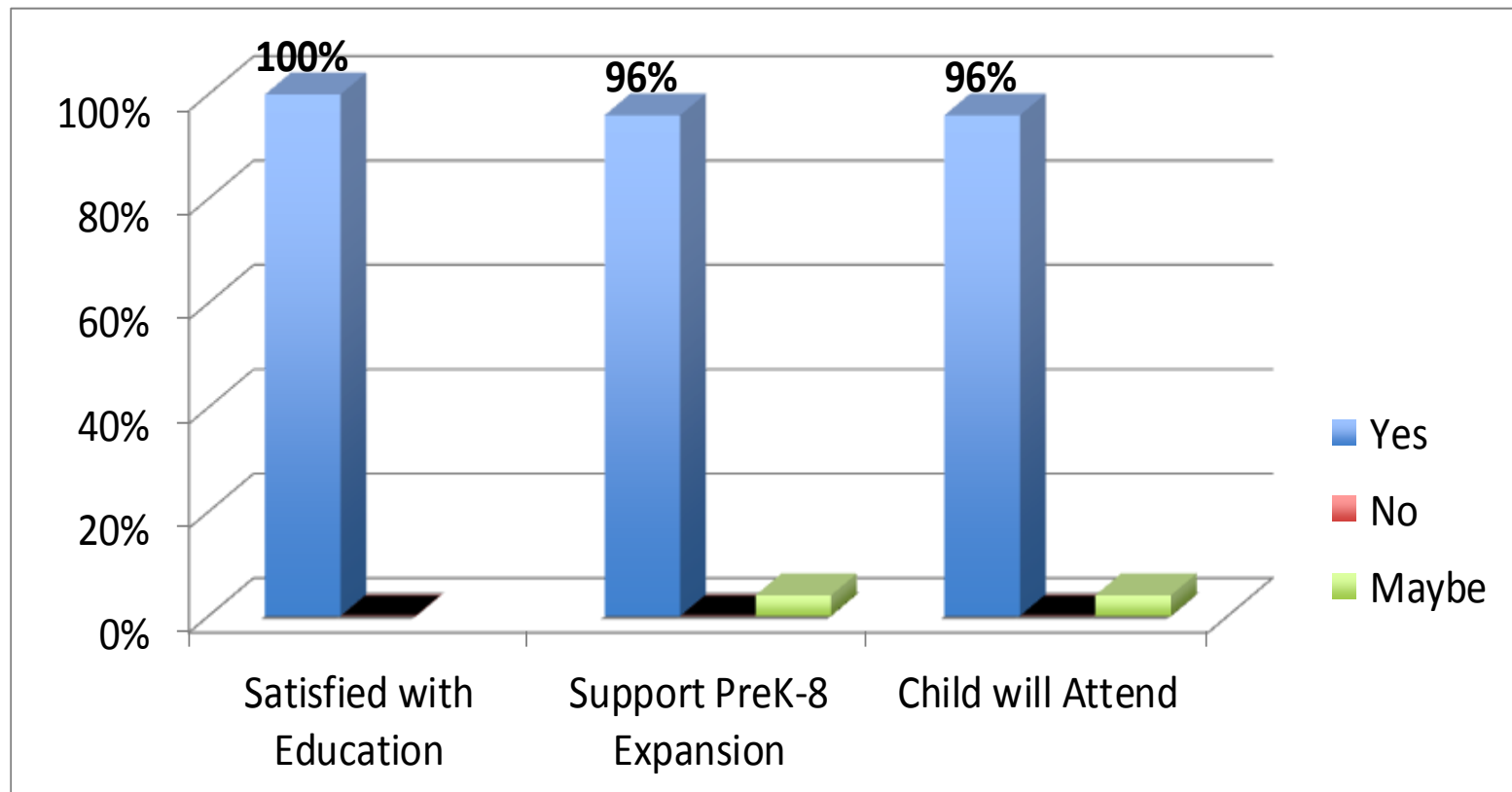
Staff, Students and Families Support Expansion!

*Community Schools, Thriving Students*

# Community Support for Expansion

11

## 5<sup>th</sup> Grade Parent Survey Results

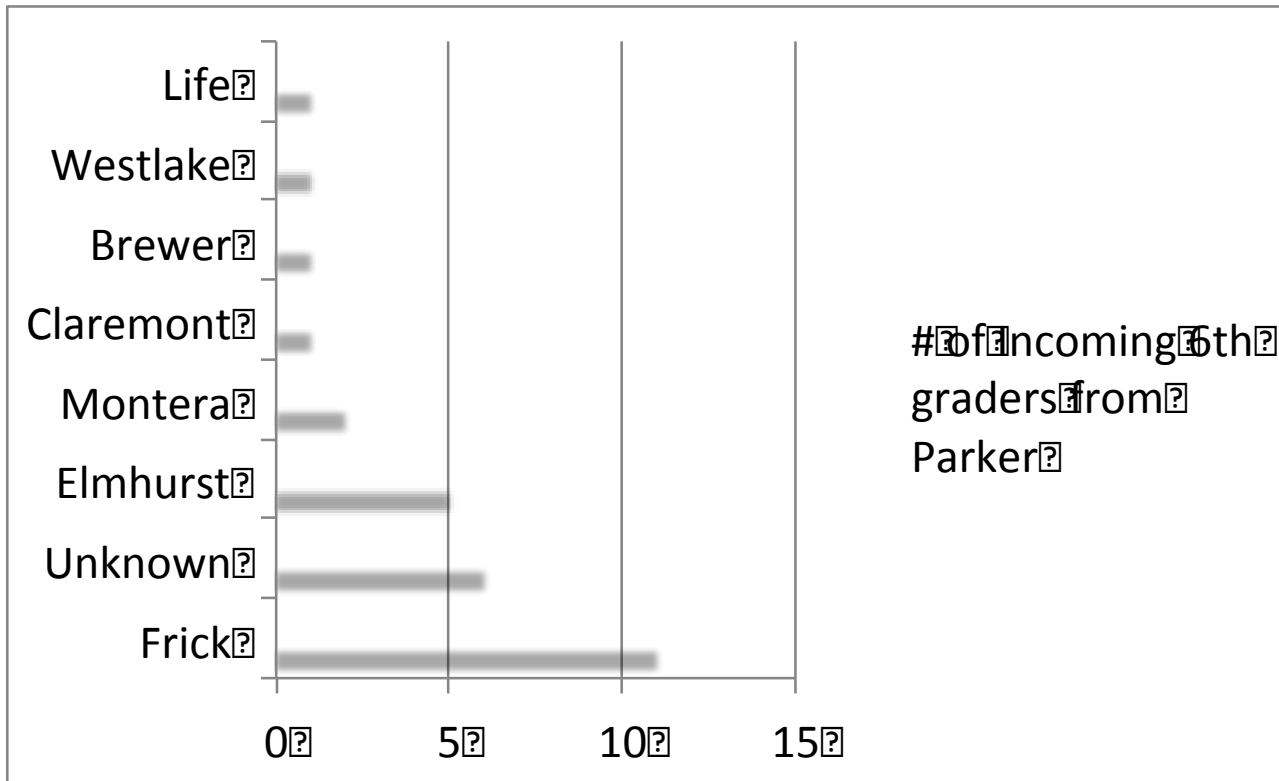


*Community Schools, Thriving Students*

# Middle Schools Attended by Parker Students

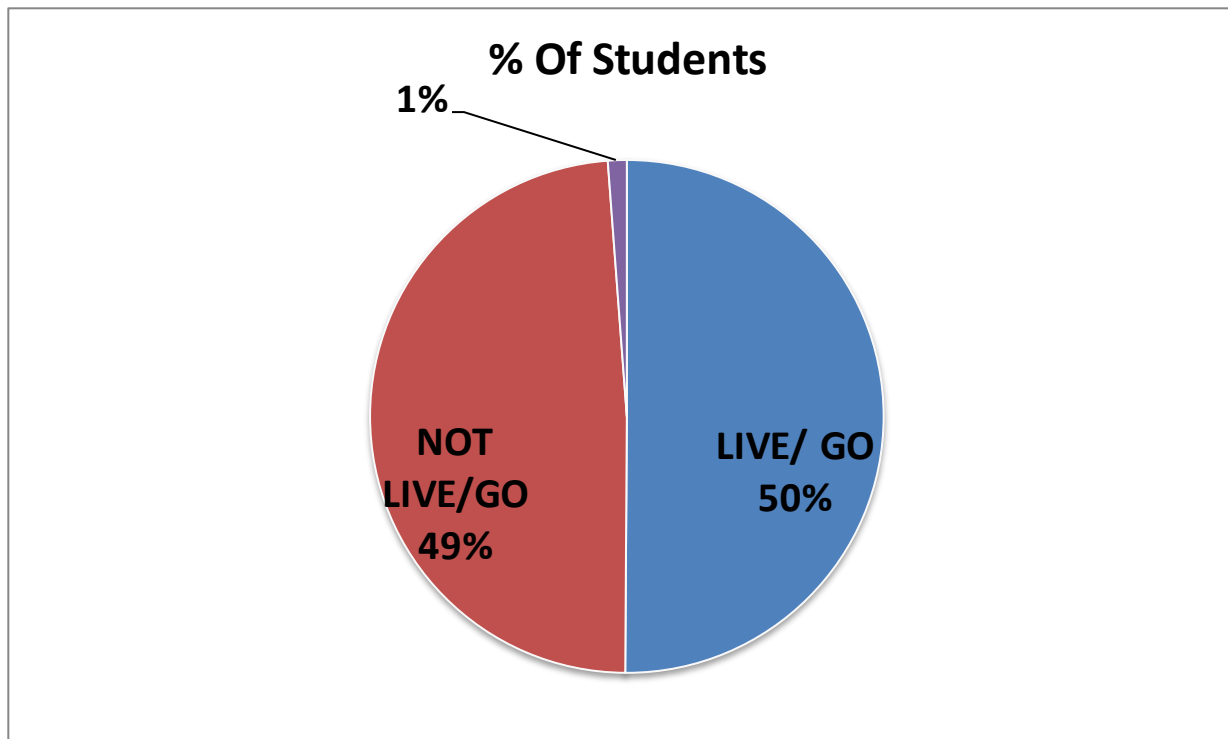
12

## 2013-2014



*Community Schools, Thriving Students*

# Parker Live/Go Data



# Overview of Expansion Proposal

14

## High quality option for the community

Parker will expand to a TK-8 school over the next 3 years.

2014-2015 one 6<sup>th</sup> grade class

2015-2016 two 6<sup>th</sup> grades, one 7<sup>th</sup> grade,

2016-2017 two 6<sup>th</sup> grades, two 7<sup>th</sup> grades, one 8<sup>th</sup> grade

2017-2018 two classes per grade

Year 1 staffing expansion will include 2 TSA Teachers offering cored subjects for one class of 25 students; while supporting teacher collaboration and expansion planning, as well as maintain school culture

# Expansion Enrollment Projections

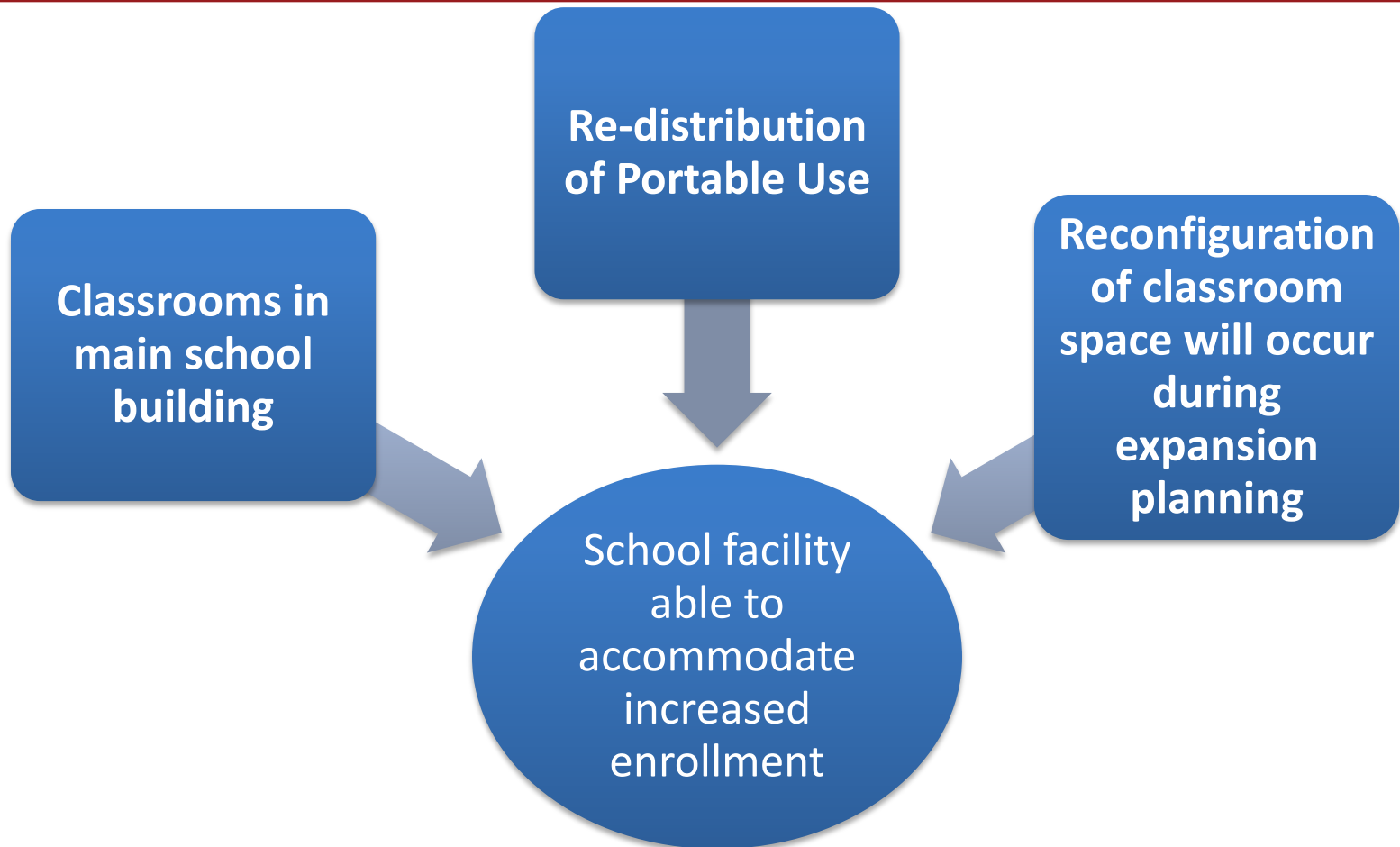
15

Year	TK-5	Expansion	Total
2014-2015	220	25	245
2015-2016	220	75	295
2016-2017	220	125	345
2017-2018	220	150	370

*Community Schools, Thriving Students*

# Parker Facility Plan for Expansion

16



*Community Schools, Thriving Students*



# Process and Timeline

17

## Development of Parker TK-8 Expansion

**April-June-** Family Engagement, Expansion Planning and Coaching, School Site Visits

**July-August-** Professional Development, Staffing, Enrollment, Expansion Planning and Coaching

**Fall 2014** Parker opens with one 6<sup>th</sup> grade class, Expansion Planning and Coaching

**Fall 2015** Parker opens with two 6<sup>th</sup> and one 7<sup>th</sup> grade class, Expansion Planning and Coaching

**Fall 2016** Parker opens with two 6<sup>th</sup>, two 7<sup>th</sup> and one 8<sup>th</sup> grade class, Expansion Planning and Coaching

**Fall 2017** Parker at full capacity with two 6<sup>th</sup>, two 7<sup>th</sup> and two 8<sup>th</sup> grade classes

**3 year School Expansion**

# Current Work Streams

18

- Family Outreach and Engagement
- Expansion Coaching and Planning
- K-8 Site Visits
- Facility Planning
- Budget Projection
- Collaboration with School and Community Partners
- Staffing and Enrollment



# Theory of Action

19

If We...

Then...

Provide High Quality Instruction

Ensure Teacher Collaboration and Professional Development

Consistently Use Data to Drive Instruction and Develop School Goals

Ensure the Social, Emotional and Physical Health of our Students

Prepare our Students for College and Beyond

Parker students will excel academically and transition to high school as confident, healthy and responsible leaders

# Pillars of TK-8 Expansion

20

## Five Essential Goals

1. Provide High Quality, Standards-Based Instruction
2. Ensure Teacher Collaboration and Professional Development
3. Consistently Use Data to Drive Instruction and Develop School Goals
4. Ensure the Social, Emotional and Physical Health of our Students
5. Prepare Students for College and Beyond

# Overview of Costs to Implement Parker Expansion

## 21 2014-15 Budget Implications

Funding Source	Description	Amount
SES Title I LCI <i>TBD</i>	Professional Development and Expansion Coaching (site visits, ILT planning sessions, PD, coaching)	\$23,900
SES Title I	Staffing (1 TSA )	\$78,000
SES Title I	Staffing (STIP sub)	\$30,000
SES Title I	Summer Expansion Institute for Students	\$6000
SES Title I	Facility Upgrades –Furniture (Technology upgrades TBD) Noon Supervisor .2FTE	\$3000 \$5000
SES Title I	Marketing and Brochures	\$4000
	<b>TOTAL Estimated Projection</b>	<b>\$149,900</b>

*Our goal-“To teach children, who come; how to read, write, think, compute, appreciate the arts, speak well and behave in socially acceptable ways, so they become economically independent and contributing members of society.”*



OAKLAND UNIFIED  
SCHOOL DISTRICT

*Community Schools,  
Thriving Students*

***Community Schools, Thriving Students***



# Goal 1

24

## Goal 1: Provide High Quality, Standards Based Instruction

	Objective	Rationale
1	Maintain Balanced Literacy Framework through middle school grades	<ul style="list-style-type: none"><li>• Explicit literacy instruction and successful reading strategy instruction needs to be carried from elementary school to the upper middle school grades.</li><li>• Teachers need a differentiated approach to meet the wide needs of learners.</li></ul>
2	Teachers will consistently and collaboratively backwards map from the standards	<ul style="list-style-type: none"><li>• Successful instruction is standards-based and is consistent throughout classrooms and aligns to the high cognitive demand of the Common Core</li></ul>

*Community Schools, Thriving Students*





# Goal 2

25

## Goal 2: Ensure Teacher Collaboration and Professional Development

	Objective	Rationale
1	Develop and expand Professional Learning Community Model	<ul style="list-style-type: none"><li>Professional learning communities allow teachers to develop a shared understanding of grade level proficiency and identify successful instructional practices to utilize school wide.</li></ul>
2	Provide on-going Professional Development	<ul style="list-style-type: none"><li>Teachers need to develop an understanding of middle school needs and age appropriate strategies and curriculum.</li><li>Successful instruction is supported by professional development that is data driven and embedded in daily work.</li></ul>

*Community Schools, Thriving Students*



# Goal 3

## Goal 3: Consistently Use Data and Assessment to Drive Instruction

	Objective	Rationale
1	Use formative assessment and data from various sources to support and adjust instructional practices	<ul style="list-style-type: none"><li>• Data discussions among teachers and students allow school to set and monitor achievement goals.</li><li>• Successful instruction is data driven.</li><li>• Formative assessments give insights into student understanding and gaps</li></ul>
2	Initiate Academic Conferences to support teacher development and data reflection	<ul style="list-style-type: none"><li>• Data reflection allows teachers to tailor instruction to academic needs of students.</li></ul>



# Goal 4

## Goal 4: Ensure the Social, Emotional and Physical Health of our Students

	Objective	Rationale
1	Expand Culturally Responsive Pedagogy model and partnership with African American Male Achievement Taskforce	<ul style="list-style-type: none"><li>• Schools should reflect students’ cultural identity and and promote a connection to their community.</li><li>• Schools need to help students develop a basis for self esteem and a sense of belonging.</li><li>• Students need opportunities to create bonds within their community.</li><li>• Students’ sense of hope and internal motivation affects their engagement with school.</li></ul>
2	Develop a site based health center and offer parent education classes	<ul style="list-style-type: none"><li>• Successful schools support the physical and mental health of students and their families.</li></ul>



# Goal 5

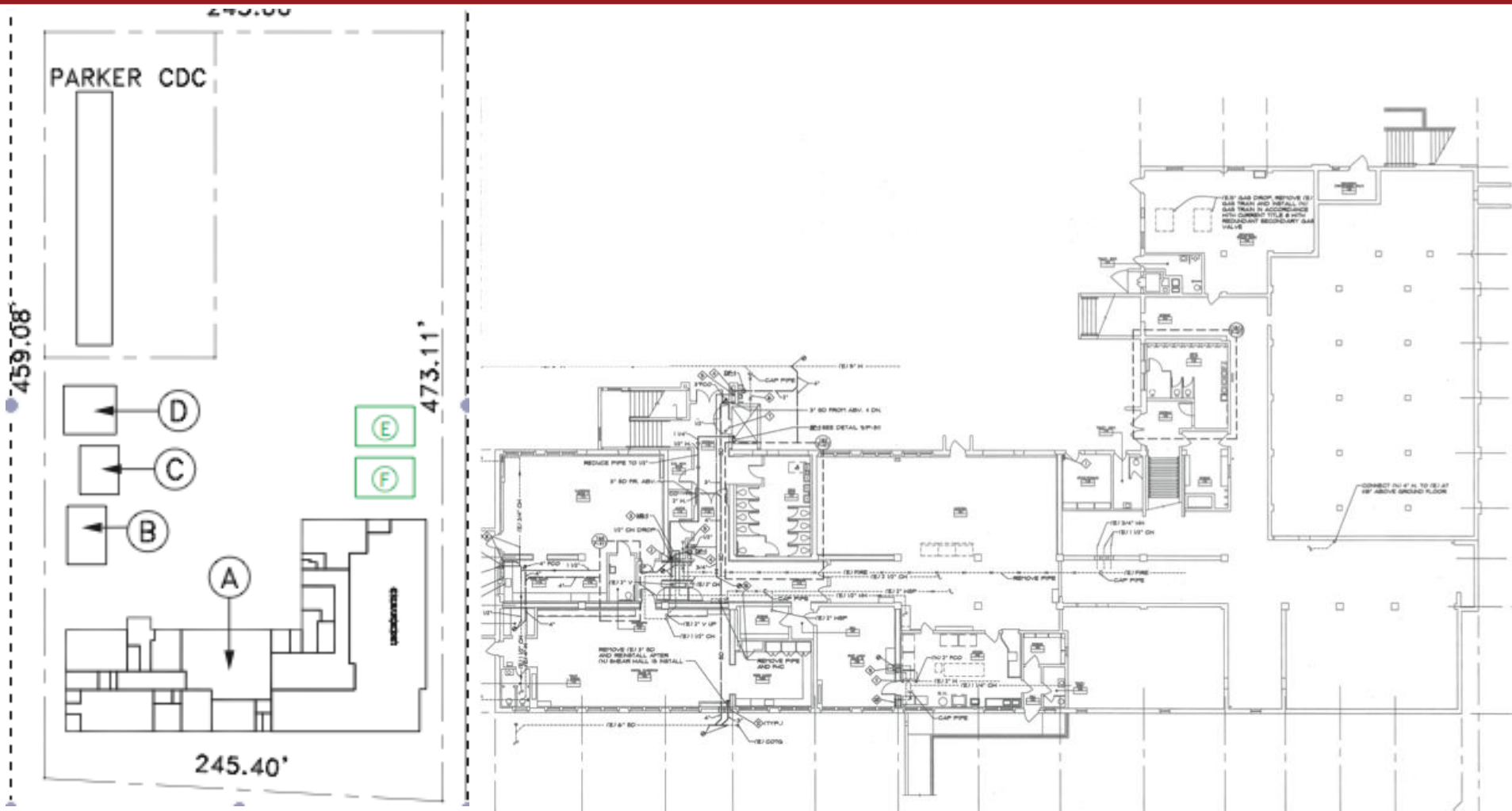
## Goal 5: Prepare Students for College and Beyond

	Objective	Rationale
1	Develop a College –Going Culture	<ul style="list-style-type: none"><li>• Setting high expectations for all students and instilling the belief that college is an attainable goal creates an environment where college is the norm, not the exception.</li><li>• Families and students need access to accurate information to ensure successful transition to high school on the road to college and career</li></ul>
2	Link learning to career paths in Science	<ul style="list-style-type: none"><li>• Drop out rates are reduced when students see their learning connected to the real world.</li><li>• Linked learning provides opportunities for our students in high need economic sectors.</li></ul>

# Parker Facility Maps

29

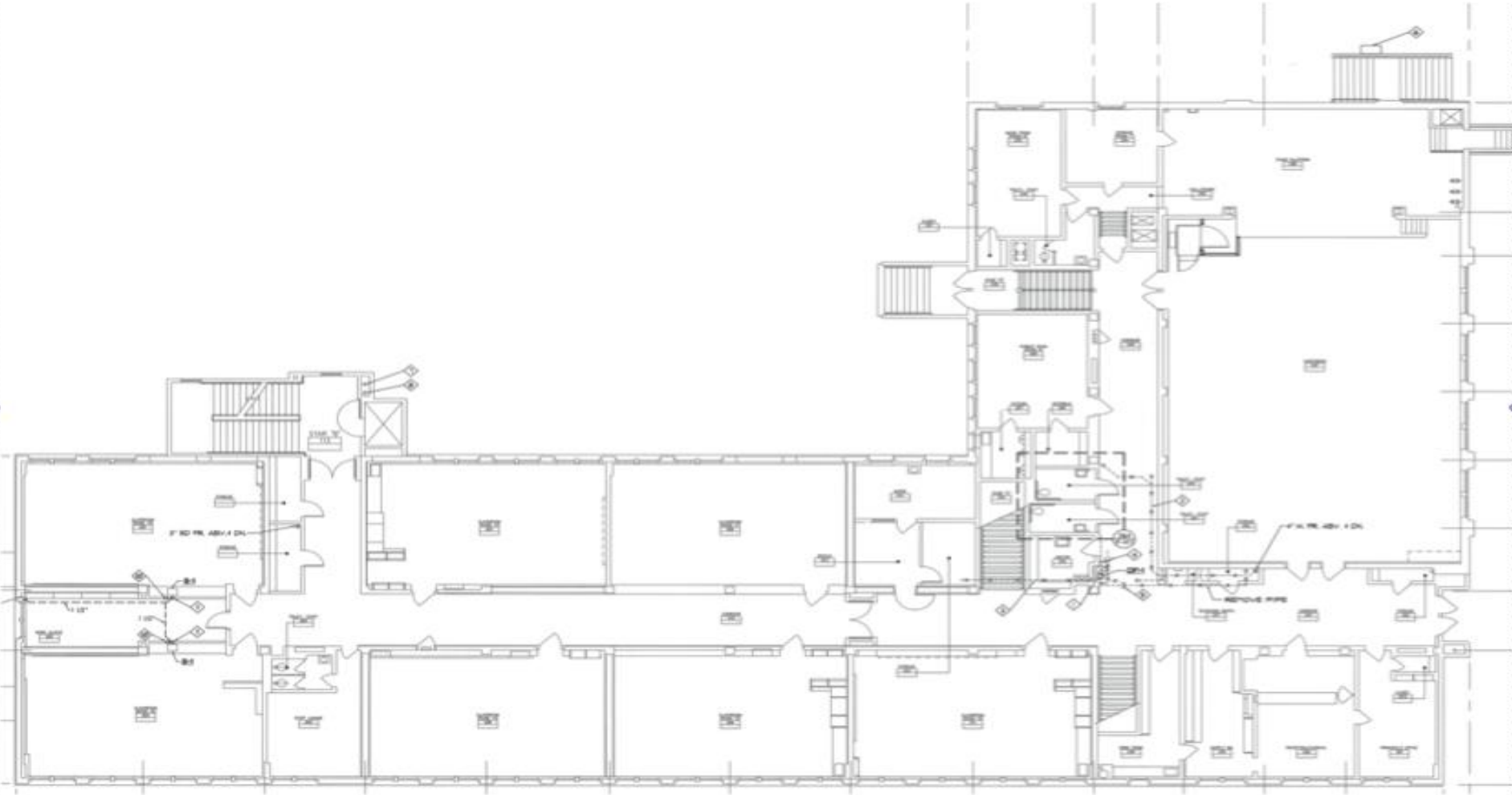
## Site Plan and Ground Floor



# Parker Facility Maps

30

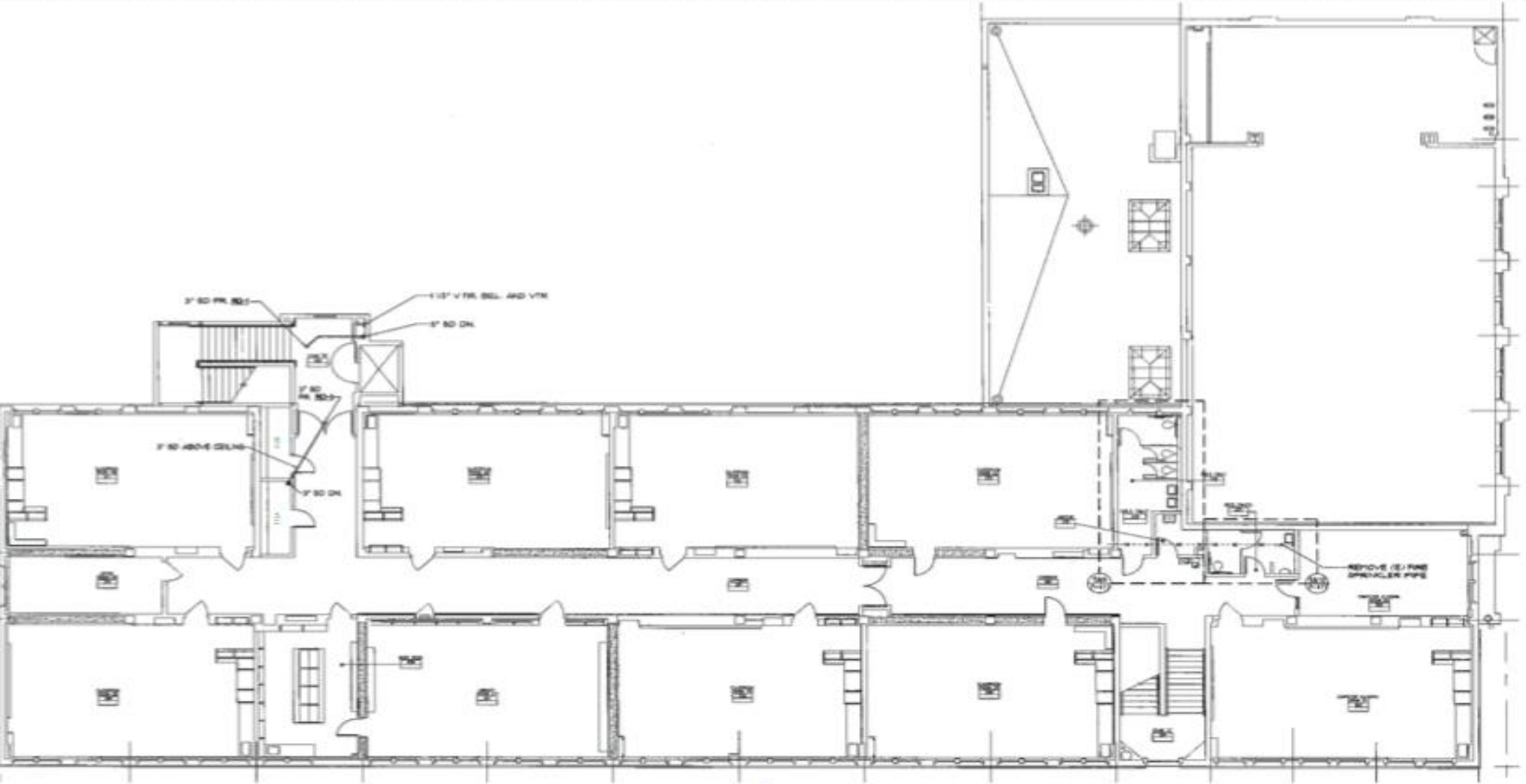
First Floor



# Parker Facility Maps

31

Second Floor



# Parker Facility Maps

32

Unit D,C, B





# Overview of Costs to Implement Parker Expansion

33

## 2016-17 Budget Implications

Funding Source	Description	Amount
SES Title I	Professional Development and Expansion Coaching (site visits, ILT planning sessions, PD, coaching)	\$17,000
SES Title I	Expansion Principal Pay Increase	\$10,000
SES Title I	Summer Expansion Institute for Students	\$30,000
SES Title I	Assistant Principal 1.0 FTE STIP Sub	\$100,000 \$30,000
SES Title I	Marketing and Brochures	\$1,500
	<b>TOTAL Estimated Projection</b>	<b>\$188,500</b>

# Overview of Costs to Implement Parker Expansion

34

## 2015-16 Budget Implications

Funding Source	Description	Amount
SES Title I LCI Funding	Professional Development and Expansion Coaching (site visits, ILT planning sessions, PD, coaching)	\$17,000
SES Title I	Expansion Principal Pay Increase	\$10,000
SES Title I	Summer Expansion Institute for Students	\$30,000
SES Title I	Assistant Principal 1.0 FTE STIP Sub	\$100,000 \$30,000
SES Title I	Marketing and Brochures	\$1,500
	<b>TOTAL Estimated Projection</b>	<b>\$188,500</b>