



Update on the Citywide Plan Map Process



June 23, 2021: Resolution 2021-0128 Advancing District's Citywide Plan Work

Kyla Johnson-Trammell, Superintendent

Sondra Aguilera, Chief Academic Officer

Monica Thomas, Deputy Chief of Continuous School Improvement

Lisa Grant-Dawson, Chief Business Officer

Ask of the Board

Provide feedback on...

- process for redesigning schools;
- the metrics and process used to review and evaluate all school sites to recommend Cohort 3; and
- the financial assumptions associated with changes due to school closures, mergers, and redesign process.

Overview

We will:

- Provide background of the Citywide Plan;
- Present the updated sequence for the Redesign Process;
- Share the process for reviewing and evaluating school sites against the driving metrics within Quality, Equity and Sustainability;
- Discuss the financial analysis; and
- Share our next steps.

Vision

All OUSD students will find joy in their academic experience while graduating with the skills to ensure they are caring, competent, fully-informed, critical thinkers who are prepared for college, career, and community success.



Mission

Oakland Unified School District (OUSD) will build a Full-Service Community District focused on high academic achievement while serving the whole child, eliminating inequity, and providing each child with excellent teachers, every day.



**OAKLAND UNIFIED
SCHOOL DISTRICT**

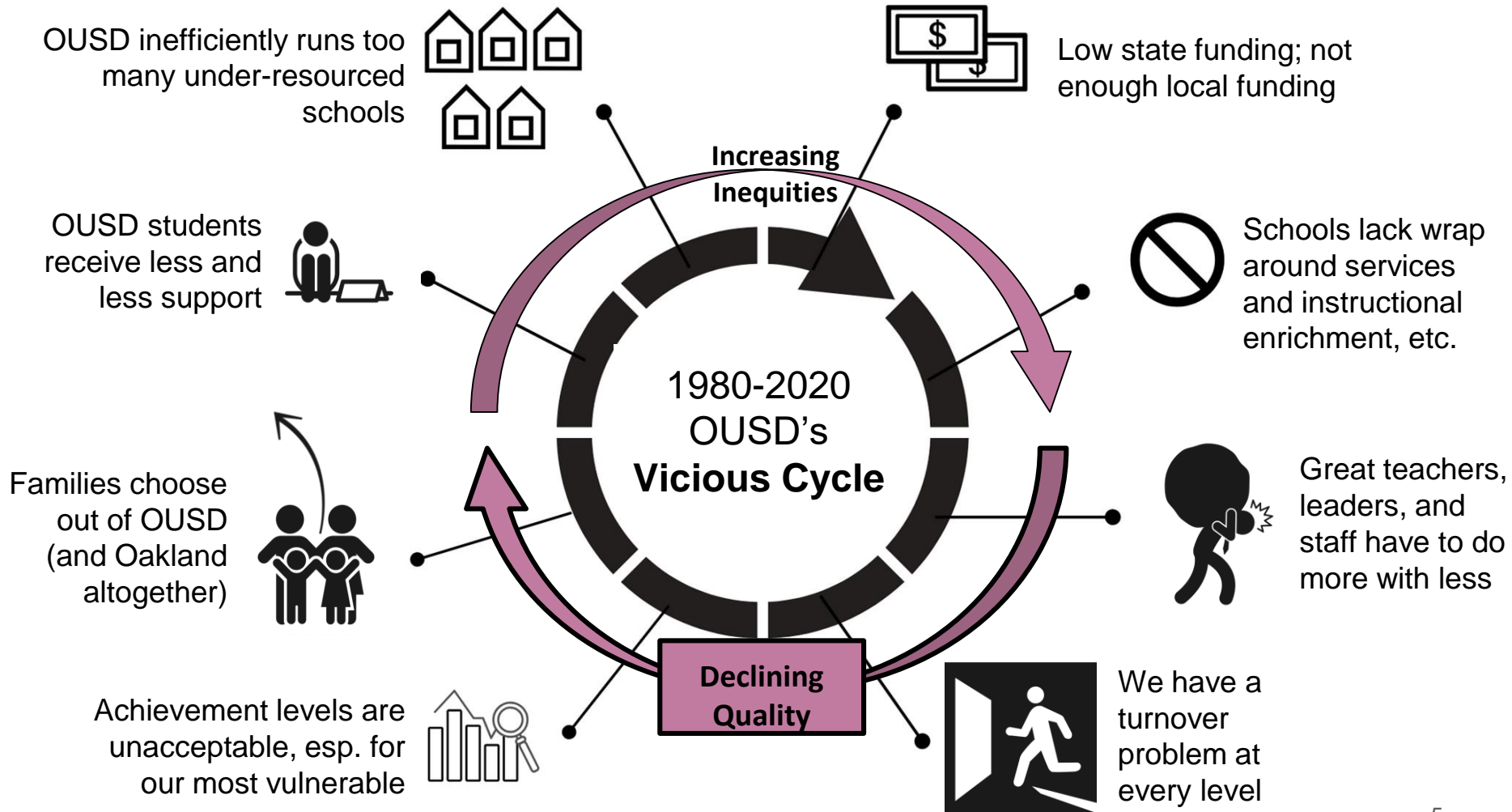
Community Schools, Thriving Students

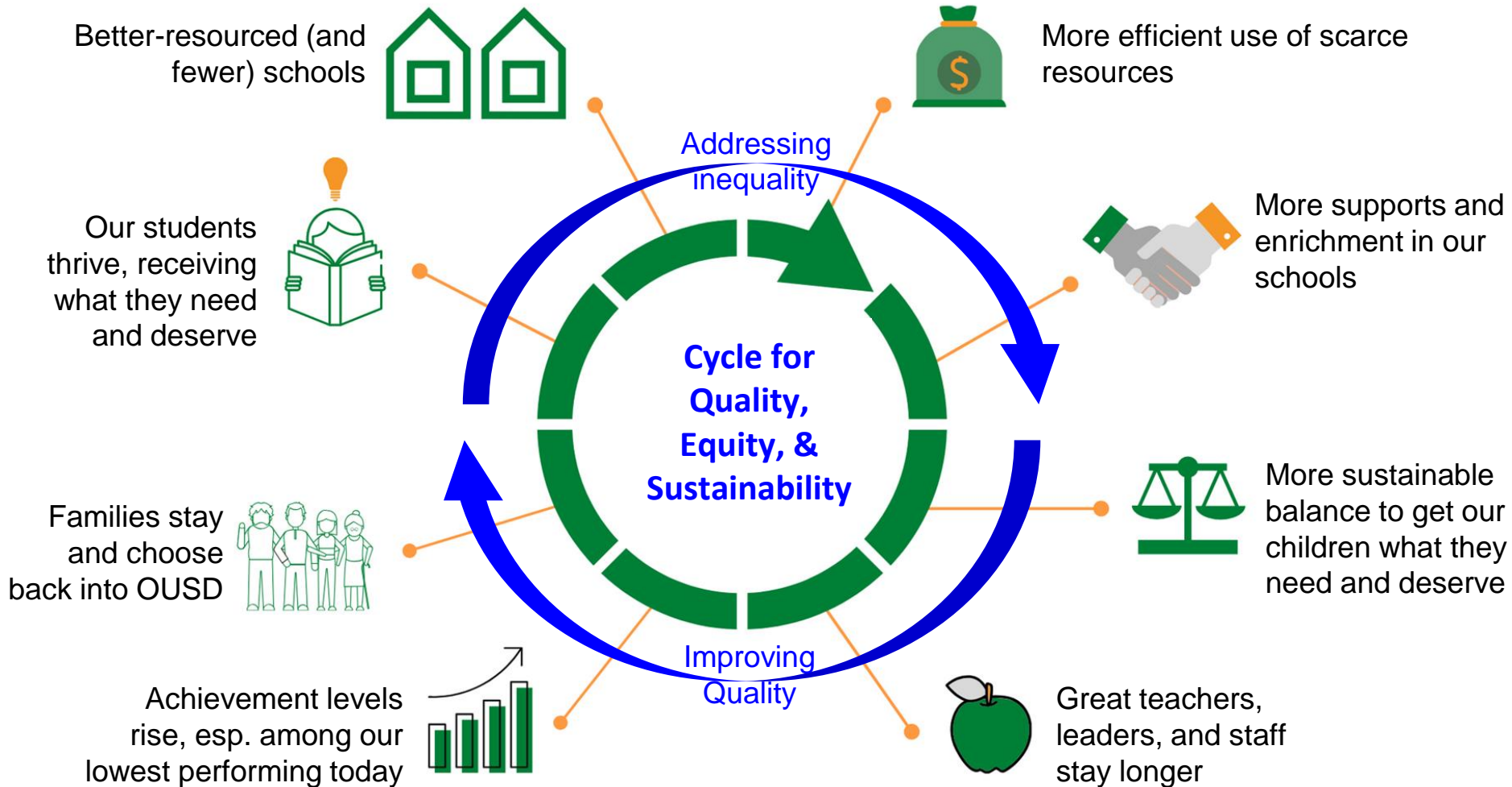


Community of Schools Policy (BP 6006 adopted June 2018)

A Citywide Plan grounded in policy: Asset Management, Charter Authorization, Enrollment, Equity, Results-based Budgeting, School Governance, and Quality School Development

A	Facilities	Leverage vacant, underutilized, and surplus properties and utilize facility use agreements to strategically engage all Oakland public schools-district or charter; identify high quality options for academic programs
B	Enrollment & Transportation	Work with all Oakland public schools district or charter - to better articulate feeder patterns across Oakland to ensure more predictability for families.
C	Charter Authorization	Strengthen our role in oversight and accountability to ensure that all charter schools operating in Oakland are providing a high quality education and working to address inequities.
D	Access to Equitable & Quality Education for all	Share best practices across all Oakland public schools , (e.g., professional development, recruitment and retention of educators) that improve equitable educational access for all Oakland students.
E	Defined Autonomies	Best support continued innovation within OUSD schools and accelerate the number of high-quality school options within OUSD





12/9/20 Resolution Implementation

Phase	Details	Timeline
Implementation 1	<ul style="list-style-type: none">● Supporting Cohorts 1 and 2● CUES/Futures Merger● Roses/Howard Merger● Equitable Enrollment Policy● Long-term Vision for Alt. Ed● Surplus and Unused Property	Quarterly updates June 2021 deliverable
Implementation 2	<ul style="list-style-type: none">● Cohort 1 & 2 Impact Analysis	May 2021
Implementation 3	<ul style="list-style-type: none">● Citywide Plan District Map with proposed changes and impact analysis*	June 2021
Implementation 4	<ul style="list-style-type: none">● Board votes on the proposed Citywide Plan Map	September 2021
Implementation 5	<ul style="list-style-type: none">● Support school sites to implement the changes	September 2021 - September 2022

Problems to address: Quality, Equity, and Sustainability



Quality

Improve the quality of our district schools.



Equity

Invest in improving outcomes for black and brown students.



Sustainability

Decrease the number of schools we operate to sustain a quality program.

Community of Schools Vision

OUSD will ensure success for all students by equitably distributing resources to schools so that students and families access more sustainable, well-resourced schools that are intentionally designed to serve our students and communities.

Citywide Plan Theory of Action

High Quality, Sustainable
Neighborhood Schools

If we identify a set of strategic mergers, redesigns, expansions, and closures to decrease our overall district footprint that currently spreads resources out too thinly and prevents schools from serving students well,

Well-Supported
Design Process

invest in the capacity building of the school community to implement a rigorous design process that develops a clear school vision, clear goals and strategies for accelerating student growth and achievement,

Equitable Access to
Resources

and equitably distribute resources to implement our redesigned schools...

Outcomes

...then, our students and families will have access to more sustainable, well-resourced schools that are intentionally designed to serve our students and communities.

Quality Community School Action Plan: Three Phases

1: Selection

2: Planning

3:
Implementation

Implementation Timeline

2017-18	2018-19	2019-20	2020-21	2021-22	2022-23
Cohort 1 School Selection	Planning	Implementation	ONGOING SUPPORTS		
	Cohort 2 School Selection	Planning	Implementation	ONGOING SUPPORTS	
			Cohort 3 School Selection*	Planning	Implementation

Cohort 3 Timeline

August 2021

Information Sessions

- Notify Board
Director of the intent to discuss a school change with an identified school community;
- Notify Principals end of July 2021
- Notify School Communities August 16-27, 2021

September 2021

Board Discussion

- First Read of the Citywide Plan Map in early September 2021
- Vote on proposed changes for the Citywide Plan map in late September 2021

October 2021

Form Design Teams

- Cohort 3 Schools form Design Teams

November 2021

Monthly Design Team Meetings

- Design Process begins with monthly content focus

Redesign Process for School Changes



Why School Improvement and Redesign?

*OUSD Vision: **All OUSD students** will find joy in their academic learning experience while graduating with the skills to ensure they are caring competent, fully informed, critical thinkers who **are prepared for college, career and community success.***

- ★ Interrupt the pattern of predictable student outcomes by race; and
- ★ Address persistently academic performance of most vulnerable students.



How might we do this?

- Build on assets and leverage community relationships;
- Keep most vulnerable students at the center of all redesign;
- Convene a team and engage in co-learning;
- Build on current definitions of best practices and quality in our system; and
- Do different vs. do better- innovate within existing frame.

Actions for School Closures

What actions do we take when we close a school?

Action	Cost
Create Welcoming Schools : Convene cross-stakeholder design teams to plan for students transferring from closed site	Approx \$25,000 per Welcoming School for stipends and hourly pay for participants + food, childcare, and translation for meetings
Provide regular professional development and support sessions for leaders of Welcoming Schools	Provided by OUSD staff (cross-departmental effort)
Case manage students and families for enrollment to a Welcoming School or use of Opportunity Ticket	Case management provided by Welcome Center and Office of Continuous Improvement
Pay teachers to pack and unpack	Approx \$15,000
Move furniture and materials from closing site to Welcoming Schools or warehouse	Approx \$15,000 for contract with moving company

Welcoming Schools

Intentional support for schools receiving students from schools undergoing changes:

- Rituals and routines for orientation and school welcoming;
- Classroom and school community building norms and practices;
- SEL support plan for students and families;
- Case management for transition, Chronic Absenteeism; and
- Celebratory Community-building activities.

Actions for Merging Sites

What actions do we take to successfully merge sites?

Action	Cost
Convene a cross-stakeholder design team	Approx \$35,000 stipends and hourly pay for participants + food, childcare, and translation for meetings
Provide regular professional development and support sessions for design leaders	Provided by OUSD staff (cross-departmental effort)
Move furniture and materials from closing site to new merged site	Approx \$15,000 for contract with moving company
Pay teachers to pack and unpack	Approx \$15,000
Facilities work: new keys and signage, repairs and upgrades as needed	\$15,000-\$300,000 depending on scope of work

Action for Vacated Sites

What happens to a school site that is vacated due to a school closure/merger?

- Identify if the site is needed for any of the following district purposes:
 - another educational purpose (another TK-12 school or charter school, early childhood, adult ed, special education program, etc.).
 - administrative or operational purposes for the school district
 - temporary space for construction of a facilities capital project requiring a move of an existing school
- Identify if there potential actions for additional revenue generation for OUSD programs
 - Joint Use Leases
 - Workforce Housing
 - Long Term Lease or Sale
 - Property Exchange

Actions for Redesign Sites

What actions do we take to successfully redesign a school program?

Action	Cost
Convene a cross-stakeholder design team	Approx \$35,000 stipends and hourly pay for participants + food, childcare, and translation for meetings
Provide regular professional development and support sessions for design leaders	Provided by OUSD staff (cross-departmental effort)
Develop “Welcome to School” plans for individual student support through transition	Provided by OUSD staff

Opportunities for Staff, Student, and Community input during Design Year

Design Teams are formed by members of the school community to create:

- School vision, values, mission;
- Strategies, practices and process; and
- Implementation, priorities and communication.

Adult Learning in Service of Students

Framework for the learning experience of our design teams:

- ***Affective Learning is reflective:** Learning involving feelings
 - Team feels supported, inspired, loved, challenged, seen, and empowered;
- ***Imaginal Learning invokes the imagination:** Learning involving intuition and imagery
 - Team reimagines the future for students and community that builds on the past but addresses the very real challenges of persistently low outcomes for the same groups of students;
- ***Conceptual Learning is content oriented:** Learning about a particular subject matter
 - Team grounds in best practices of school, instructional, and organizational improvement; and
- ***Practical Learning is product oriented:** Concepts intentionally applied to action
 - Team takes direct action to implement improvement plans.

Design Year Milestones and Deliverables

Module 1

Affective and Imaginal

Grounding in Anti-Racist Teaching and Learning

- Community Asset Map
- School Vision, Mission, Values
- School Graduate Profile

Module 2

Conceptual and Practical

Developing a System of High Quality Instruction

- Instructional Priorities
- MTSS Plan
- Collaboration and PD Framework

Module 3

Practical

Planning for Effective Implementation

- Budget aligned to Priorities
- Calendar of key benchmarks and milestones
- Professional Dev Plan
- School Culture Plan

School Design Portfolio and School Site Plan

Partnerships across Departments

Integrate school improvement actions into existing structures and work:


- Leadership content embedded in Network Principal Professional Learning;
- Modules designed and delivered by departments;
- Graduate profile, Quality School Standards, Instructional Plan; and
- Specific designing of Equity and Anti-Racist Practices.

Process to Review All Schools

Process for Identifying Recommendations

- Review all school sites against the metrics for Quality, Equity, and Sustainability;
- Identify the frequency of school sites that struggle in Quality, Equity, and Sustainability;
- Next Steps- Use the frequency metric to recommend school closures, mergers, or redesigns for Quality, Equity, and Sustainability.
- Identifying schools for Cohort 3 will not be linear and there is no analysis that leads to an automatic school closure, merger or redesign.

Process for Identifying Recommendations

<p>General Information</p> 	<ul style="list-style-type: none"> ● School Demographics ● Regional Demographics
---	--

Select a School	Prescott School					
Theme	Category	Metric Detail	Data			Analysis
General School Information	School Demographics	Composition of school: Race, SpEd, ELLs, Unhoused, Foster, NSLP	2018-19	2019-20	2020-21	
		% African American	68% (102)	64% (77)	64% (76)	Largest student group served at Prescott.
		% Asian	4% (6)	4% (5)	4% (5)	
		% Latino/a	19% (29)	24% (29)	22% (26)	2nd largest group served at Prescott.
		% Multiple Ethnicity	4% (6)	2% (3)	3% (3)	
		% White	3% (5)	2% (2)	2% (2)	
		% Special Education	16% (24)	17% (20)	13% (16)	
		% English Learner	11% (16)	15% (18)	9% (11)	
		% Unhoused	4% (6)	2% (2)	3% (3)	
		% Foster	1% (2)	0% (0)	0% (0)	
	% Free/Reduced Price Lunch	91% (138)	90% (109)	79% (94)	Most students at Prescott are low-income.	
	Regional Demographics	% of students who attend school living in attendance area	2018-19	2019-20	2020-21	
		% Live/Go	49%	52%	47%	Consistently approx half
		# public schools nearby with same gradespan	Narrative only in analysis box to right			MLK (TK-5); Hoover (K-5)
		# nearby similar schools with specialized programs	Narrative only in analysis box to right			KIPP TK-8
		Community demographics	Narrative only in analysis box to right			
		Movement of families into and out of the neighborhood	Narrative only in analysis box to right			

Process for Identifying Recommendations

Quality



- CA Dashboard: SBAC ELA and Math
- Reading Inventory: Percent At or Above Grade-Level
- CORE Growth Data
- CA Healthy Kids Survey (CHKS) Data: School Climate and Connectedness
- Graduation Rate, A-G Rate, Pathway Participation
- ES=7 Metrics; MS/HS=13 Metrics

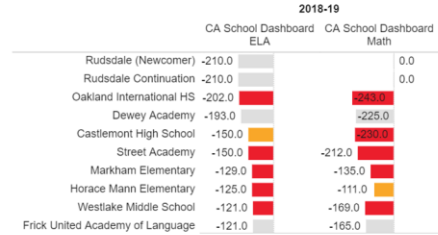
Compare Quality Measures for Selected Schools

Use the filters to view the results for Quality measures for a subset of schools.

Region: (All) Network: (All) Level: (All) Schools: (All) Highlight School:

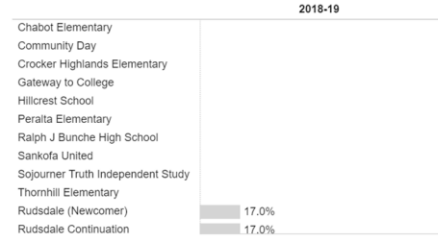
California School Dashboard: ELA and Math

Distance from Standard in points where negative is below standard



California School Dashboard: English Learner Progress

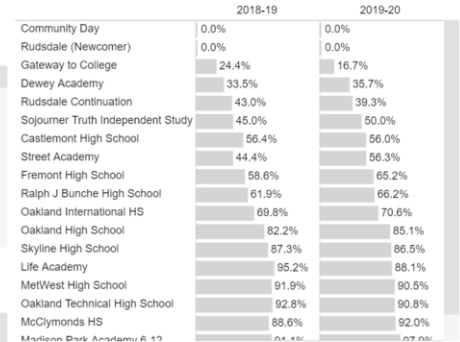
% of English Learners making progress toward English proficiency



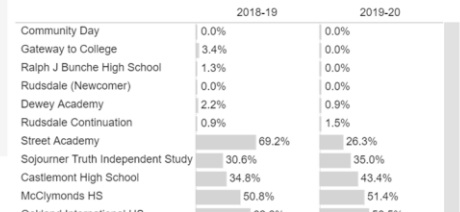
CORE Growth

0-100th Percentile (and impact)
2018-19

Cohort Graduation Rate



A-G Completion



Process for Identifying Recommendations

Equity



- Student Group Performance on SBAC
- Student Group on Graduation
- Student Group Performance on Reading Inventory
- Chronic Absenteeism by Student Group
- Suspension Rate, and by student group
- Previously impacted by previous school change
- ES=50 Metrics; MS=54 Metrics; HS=58 Metrics

Compare Equity Measures for Selected Schools

Use the filters to view the results for Equity measures for a subset of schools.

Region: (All) Network: (All) Level: (All) School: (All) Student Group: African American Highlight School: High School

California School Dashboard Results

Distance from standard (DF-S) in points

	SBAC ELA	SBAC Math
Global Family School	-174	-209
Horace Mann Elementary	-133	-125
Emerson Elementary	-126	-129
Futures Elementary	-124	-118
Community United Elementary ..	-123	-106
Markham Elementary	-122	-131
Reach Academy	-112	-116
Bella Vista Elementary	-104	-85
Manzanita Community School	-102	-120
Prescott School	-99	-73
New Highland Academy	-99	-96
RISE Community School	-97	-104
Sankofa United	-96	-111
Garfield Elementary	-96	-101
Allendale Elementary	-92	-105
Manzanita SEED Elementary	-91	-105
Martin Luther King Jr Elementary	-90	-48
East Oakland PRIDE Elementary	-89	-118
EnCompass Academy	-89	-105
Brookfield Village Elementary	-89	-95
Hoover Elementary	-88	-93
Fred T. Korematsu Discovery A..	-82	-89
La Escuelita Elementary	-81	-125
Grass Valley Elementary	-80	-84
Laurel Elementary	-74	-83
Howard Elementary	-74	-96
Madison Park Academy TK-5	-70	-79

Chronic Absenteeism

	2018-19	2019-20	2020-21
African American	58.8%	34.1%	46.3%

Reading Inventory

	2018-19	2020-21
African Amer		
Castlemont High School	11.6%	0.0%
Community Day	6.7%	
Gateway to College		
McClaymonds HS	22.1%	0.0%
MetWest High School	41.4%	
Oakland International HS	8.3%	
Ralph J Bunche High School	1.6%	0.0%
Ruddsdale (Newcomer)		
Ruddsdale Continuation	10.6%	0.0%
Sojourner Truth Independent St...	11.3%	0.0%
Street Academy	31.9%	0.0%
Frick United Academy of Langu...	22.6%	9.1%
Dewey Academy	15.3%	11.1%
Westlake Middle School	18.4%	12.3%
United for Success Academy	14.8%	16.0%

Cohort Graduation Rate

	2018-19	2019-20
African Amer		
Ruddsdale (Newcomer)		0.0%
Community Day		
Gateway to College	33.3%	9.1%
Dewey Academy	38.8%	34.8%
Life Academy	0.0%	50.0%
Ruddsdale Continuation	55.6%	54.3%
Sojourner Truth Independent Stu...	47.1%	56.5%
Ralph J Bunche High School	64.7%	62.8%
Street Academy	58.3%	66.7%
Oakland International HS	100.0%	71.4%
MetWest High School	100.0%	73.3%
Castlemont High School	79.7%	74.5%

Process for Identifying Recommendations

Sustainability



- Number of Schools at Sustainable Enrollment Rate (Base, Base +, Community Schools)
- Demand Rate
- Teacher Retention Rate
- Leadership Capacity
- Three Year Enrollment Trend
- Facilities Utilization
- Facilities Condition
- Regional Feeder Pattern
- Optimal Location
- ES/MS/HS= 13 Metrics

Compare Sustainability Measures for Selected Schools

Use the filters to view the results for Sustainability measures for a subset of schools.

Region: (All) Network: (All) Level: (All) School: (All) Highlight School: [dropdown]

School	2018-19	2019-20	2020-21
Community Day	25	23	19
Gateway to College	67	81	77
Ralph J Bunche High School	128	105	80
Street Academy	107	96	88
Prescott School	151	121	119
Rudsdale Continuation	160	140	135
Sojourner Truth Independent Study	166	172	150
Rudsdale (Newcomer)	103	132	150

School	2018-19	2019-20	2020-21
Frick United Academy of Language	72.1%	42.9%	0.0%
Parker Elementary	20.0%	16.2%	9.4%
Fred T. Korematsu Discovery Academy	41.4%	20.0%	26.9%
RISE Community School	35.6%	35.2%	32.0%
Greenleaf Elementary	81.7%	72.2%	33.7%
La Escuelita Elementary	58.1%	68.8%	35.5%
McClymonds HS	22.9%	45.2%	36.2%
EnCompass Academy	39.4%	28.0%	36.8%
Prescott School	12.8%	15.8%	38.2%
Madison Park Academy 6-12	112.3%	88.1%	39.4%
Piedmont Avenue			

School	2018-19	2019-20	2020-21
West Oakland Middle School	433		
MetWest High School	-345		
Westlake Middle School	-340		
Frick United Academy of Language	-308		
Prescott School	-278		
Urban Promise Academy	-266		
United for Success Academy	-260		
Howard Elementary	-234		
McClymonds HS	-223		
Burckhalter Elementary	-203		
Sankofa United	-203		
Brookfield Village Elementary	-184		

School	2018-19	2019-20	2020-21
Gateway to College	5		
Rudsdale (Newcomer)	8		
Street Academy	8		
Oakland Technical High School	13		
Dewey Academy	14		
Hillcrest School	14		
Peralta Elementary	15		
Sankofa United	15		
Burckhalter Elementary	16		
Cleveland Elementary	16		
Hoover Elementary	16		
Ralph J Bunche High School	16		
Urban Promise Academy	16		

School	2020-21
Street Academy	92.5%
Garfield Elementary	82.0%
Melrose Leadership Academy	80.7%
Sequoia Elementary	74.2%
McClymonds HS	72.7%
Community Day	71.8%
Parker Elementary	68.9%
Fruitvale Elementary	67.3%
Crocker Highlands Elementary	67.2%
Roosevelt Middle School	66.5%
Bella Vista Elementary	65.9%
Edna M Brown Middle School	64.9%

School	2020-21
Gateway to College	0.0%
Ralph J Bunche High School	0.0%
Prescott School	48.0%

Frequency: Identifying Elementary Schools

Count of metrics among the N lowest-rank by school

School	☰	Quality
Markham Elementary		7
Emerson Elementary		6
Horace Mann Elementary		6
Futures Elementary		5
East Oakland PRIDE Elementary		4
Manzanita Community School		4
Reach Academy		4
RISE Community School		4
Global Family School		3
Bella Vista Elementary		2
Bridges Academy		2
Community United Elementary School		2
Glenview Elementary		2
Grass Valley Elementary		2

Quality (X out of 8)
Sustainability (X out of 13)

School	☰	Equity
Futures Elementary		38
Markham Elementary		37
Manzanita Community School		30
Horace Mann Elementary		29
Prescott School		26
Parker Elementary		23
Reach Academy		22
Martin Luther King Jr Elementary		20
East Oakland PRIDE Elementary		19
New Highland Academy		18
Global Family School		18
RISE Community School		17

School	☰	Sustainability
Howard Elementary		8
Burckhalter Elementary		7
Sankofa United		7
Horace Mann Elementary		6
Madison Park Academy TK-5		6
Parker Elementary		6
Prescott School		6
Brookfield Village Elementary		5
Carl Munck Elementary		5
Grass Valley Elementary		5
RISE Community School		5
Garfield Elementary		4
Joaquin Miller Elementary		4

Equity (X out of 50)

Frequency: Identifying Middle Schools

Count of metrics among the N lowest-rank by school

School	Quality
Madison Park Academy 6-12	13
Coliseum College Prep Academy	11
Life Academy	11
Bret Harte Middle School	7
United for Success Academy	7
West Oakland Middle School	7
Westlake Middle School	7
Elmhurst United Middle School	6
Frick United Academy of Language	5
Montera Middle School	5
Roosevelt Middle School	5
Edna M Brewer Middle School	3
Claremont Middle School	2
Urban Promise Academy	2

Quality (X out of 8)
Sustainability (X out of 13)

School	Equity
Frick United Academy of Language	50
West Oakland Middle School	49
United for Success Academy	49
Bret Harte Middle School	48
Westlake Middle School	47
Elmhurst United Middle School	47
Madison Park Academy 6-12	45
Montera Middle School	44
Life Academy	39
Coliseum College Prep Academy	36
Roosevelt Middle School	30
Urban Promise Academy	23

School	Sustainability
Roosevelt Middle School	13
Westlake Middle School	13
Bret Harte Middle School	12
Montera Middle School	12
United for Success Academy	12
West Oakland Middle School	12
Elmhurst United Middle School	11
Frick United Academy of Language	11
Claremont Middle School	9
Edna M Brewer Middle School	7
Madison Park Academy 6-12	7
Urban Promise Academy	6
Life Academy	5

Equity (X out of 54)

Frequency: Identifying High Schools

Count of metrics among the N lowest-rank by school

School	Quality
Castlemont High School	12
Fremont High School	12
Street Academy	11
Dewey Academy	10
McClymonds HS	10
Rudsdale (Newcomer)	10
Rudsdale Continuation	10
Sojourner Truth Independent Study	9
Community Day	8
Ralph J Bunche High School	7
Gateway to College	6
Oakland International HS	6
Oakland Technical High School	5
Skyline High School	5

Quality (X out of 8)
Sustainability (X out of 13)

School	Equity
Castlemont High School	58
Fremont High School	55
Skyline High School	46
Rudsdale Continuation	45
Oakland International HS	44
Dewey Academy	41
Ralph J Bunche High School	39
Oakland High School	39
Oakland Technical High School	37
McClymonds HS	37
Street Academy	31
Community Day	26

School	Sustainability
Castlemont High School	12
McClymonds HS	12
Skyline High School	11
Fremont High School	10
Oakland Technical High School	10
Oakland High School	8
Oakland International HS	8
MetWest High School	7
Street Academy	7
Rudsdale (Newcomer)	6
Rudsdale Continuation	6
Community Day	5
Ralph J Bunche High School	5

Equity (X out of 58)

Financial Assumptions

Financial Assumptions for School Changes

- We assume, on average, 85% of students will return to a school after a closure or merger;
- We assume, on average, 91% of staff return to teach in OUSD although there was a change at their specific school;
- OEA Staff, per contract, follow the students unless there is no need for the same number of teachers at the receiving schools;
- There is a teacher recruitment savings that we have not identified yet, but will become an assumption based on our annual vacancy and attrition rates;
- Future analysis of other staffing from schools requires estimated transfer of students to receiving schools and changes in staffing ratios; and
- Future Proposed Estimates will not include supplemental, concentration, discretionary, or other revenue allocation changes.

Ask of the Board

- Discuss the redesign process proposed, the metrics used to review all schools in the areas of Quality, Equity, and Sustainability, and the financial assumptions for school changes.





Quality Schools in Every Neighborhood!



**OAKLAND UNIFIED
SCHOOL DISTRICT**

Community Schools, Thriving Students

1000 Broadway, Suite 300, Oakland, CA 94607

www.ousd.org



@OUSDnews

Appendix

Opportunity Ticket Examples

	Roots (2019)	Kaiser (2020)	SOL (2020)
Eligible	160	221	93
Enrolled in OUSD	146 (91%)	184 (82%)	79 (85%)
Students not in OUSD	14 (9%)	37 (17%)	14 (15%)
Enrolled at Welcoming/Merger School	Prior to Opportunity Ticket Policy	51 (23%)	70 (75%)
Enrolled at another school		133 (59%)	9 (10%)
Used Opportunity Ticket		88 (66%)	8 (9%)

Average Non-SDC Student Teacher Ratios

SiteName	Gradespan	2018-19	2019-20	2020-21
ACORN Woodland Elementary	Elementary	19.40	22.38	22.38
Allendale Elementary	Elementary	22.53	21.06	16.38
Bella Vista Elementary	Elementary	23.26	22.15	21.25
Bridges Academy	Elementary	21.50	18.78	18.91
Brookfield Village Elementary	Elementary	17.82	20.89	20.44
Burckhalter Elementary	Elementary	23.00	22.89	17.40
Carl Munck Elementary	Elementary	24.22	22.20	19.73
Chabot Elementary	Elementary	23.75	24.48	23.29
Cleveland Elementary	Elementary	25.25	23.35	23.71
Community United Elementary School	Elementary	17.75	17.50	18.13
Futures Elementary	Elementary	19.63	19.76	17.78
Crocker Highlands Elementary	Elementary	23.30	24.11	23.74
East Oakland PRIDE Elementary	Elementary	20.87	23.00	18.81
Emerson Elementary	Elementary	22.23	23.46	22.14
EnCompass Academy	Elementary	20.44	20.12	20.63
Esperanza Elementary	Elementary	19.88	17.90	18.40
Franklin Elementary	Elementary	22.54	23.38	22.36
Fred T. Korematsu Discovery Academy	Elementary	22.33	21.90	23.63
Fruitvale Elementary	Elementary	22.46	22.23	18.23
Garfield Elementary	Elementary	21.76	21.50	20.78
Glenview Elementary @ Sante Fe	Elementary	24.16	22.90	24.16
Global Family School	Elementary	26.31	26.63	20.05
Grass Valley Elementary	Elementary	19.36	17.82	18.30
Hoover Elementary	Elementary	24.45	21.38	19.07
Horace Mann Elementary	Elementary	19.60	22.67	18.08
Howard Elementary	Elementary	18.22	17.00	9.93

SiteName	Gradespan	2018-19	2019-20	2020-21
International Community School	Elementary	20.93	21.62	21.31
Joaquin Miller Elementary	Elementary	24.00	24.71	23.22
Lafayette Elementary	Elementary	23.00	N/A	N/A
Laurel Elementary	Elementary	21.82	24.00	22.25
Lincoln Elementary	Elementary	24.67	24.33	23.81
Madison Park Academy TK-5	Elementary	21.31	22.58	23.18
Manzanita Community School	Elementary	22.12	21.38	22.06
Manzanita SEED Elementary	Elementary	21.71	22.11	21.00
Markham Elementary	Elementary	22.00	18.88	15.82
Martin Luther King Jr Elementary	Elementary	19.80	22.80	16.67
Montclair Elementary	Elementary	24.62	22.25	23.08
New Highland Academy	Elementary	22.25	23.20	19.94
Peralta Elementary	Elementary	25.46	25.00	26.69
Piedmont Avenue Elementary	Elementary	22.29	23.00	23.00
Prescott School	Elementary	20.57	22.80	23.00
Reach Academy	Elementary	21.28	22.50	19.19
Redwood Heights Elementary	Elementary	22.13	22.87	21.50
RISE Community School	Elementary	21.27	22.70	21.40
Sankofa Academy	Elementary	18.56	16.71	14.50
Kaiser Elementary	Elementary	24.36	24.09	
Sequoia Elementary	Elementary	21.25	22.74	21.90
Think College Now	Elementary	21.21	21.00	21.29
Thornhill Elementary	Elementary	25.63	25.06	24.75
Greenleaf Elementary	TK-8	18.14	19.39	20.61
Hillcrest School	K-8	21.56	23.53	20.74
La Escuelita Elementary	TK-8	19.65	22.29	21.16
Melrose Leadership Academy	TK-8	19.89	19.33	19.87
Parker Elementary	TK-8	20.53	18.93	20.83

Ratios are calculated as # non-SDC students on census day divided by # general education teachers funded by that site.*

The non-SDC student teacher ratios for the merged Sankofa United decreased from the two schools' ratios pre-merger to the year of the merger. The ratio for MLA has stayed about the same across years.

Other school ratios provided for comparison.

**Including only staff who are coded to provide direct instruction to students (object codes 1105 and 1119), excluding STIP subs, School Improvement Coaches, EEIP Teachers, and ROTC Teachers.*

Average Non-SDC Student Teacher Ratios

SiteName	Gradespan	2018-19	2019-20	2020-21
Bret Harte Middle School	Middle School	15.17	17.67	14.46
Claremont Middle School	Middle School	18.12	21.55	21.41
Edna M Brewer Middle School	Middle School	22.44	21.80	23.36
Elmhurst Community Prep	Middle School	20.17	18.86	19.74
Alliance Academy	Middle School	14.94		
Frick Impact Academy	Middle School	21.78	19.36	14.95
Oakland School of Language	Middle School	14.29	16.50	
Montera Middle School	Middle School	17.46	18.50	18.44
Oakland Community Day Middle	Alt Middle School	N/A	N/A	N/A
Roosevelt Middle School	Middle School	16.68	16.55	16.97
Roots International Academy	Middle School	16.69	0.00	0.00
United for Success Academy	Middle School	17.14	16.27	17.10
Urban Promise Academy	Middle School	17.43	16.68	15.58
West Oakland Middle School	Middle School	19.10	17.00	15.46
Westlake Middle School	Middle School	15.76	15.67	15.06
Coliseum College Prep Academy	6-12	18.15	17.67	17.64
Life Academy	6-12	17.31	16.04	18.16
Madison Park Academy 6-12	6-12	18.54	17.00	18.59

SiteName	Gradespan	2018-19	2019-20	2020-21
Castlemont High School	High School	12.97	12.82	13.30
Fremont High School	High School	14.15	14.76	15.44
McClymonds HS	High School	14.12	13.79	13.50
MetWest High School	High School	12.31	13.67	16.00
Oakland High School	High School	20.62	19.80	19.63
Oakland Technical High School	High School	19.98	20.23	20.29
Skyline High School	High School	18.48	19.29	20.32
Sojourner Truth Independent Study	K-12	12.92	16.20	15.33
Dewey Academy	Alt High School	17.62	12.47	16.17
Gateway to College	Alt High School	N/A	N/A	N/A
Oakland Community Day HS	Alt High School	6.25	4.60	4.75
Ralph J Bunche High School	Alt High School	16.00	13.00	11.29
Rudsdale Continuation	Alt High School	17.67	11.67	7.44
Street Academy	Alt High School	N/A	N/A	N/A

Ratios are calculated as # non-SDC students on census day divided by # general education teachers funded by that site.*

The non-SDC student teacher ratios for the newly merged Frick United are lower this year than they were in 2019-20 for either school separately.

Non-SDC student teacher ratios for Elmhurst increased following a dip over the year of the merger.

Ratios for MetWest increased in the year of and year following expansion.

Other schools' ratios provided for comparison.

**Including only staff who are coded to provide direct instruction to students (object codes 1105 and 1119), excluding STIP subs, School Improvement Coaches, EEIP Teachers, and ROTC Teachers.*